

T5S, R96W, 6th P.M.

Encana OIL & GAS (USA) INC.

Well location, WF16D-24 I25 596 (SURFACE LOCATION), located as shown in Lot 4 (Tract 37) of Section 25, T5S, R96W, 6th P.M., Garfield County, Colorado.

BASIS OF ELEVATION

SPOT ELEVATION AT THE NORTHWEST CORNER OF SECTION 30, T5S, R95W, 6th P.M. TAKEN FROM THE FORKED GULCH QUADRANGLE, COLORADO, GARFIELD COUNTY, 7.5 MINUTE SERIES (TOPOGRAPHICAL MAP) PUBLISHED BY THE UNITED STATES DEPARTMENT OF THE INTERIOR, GEOLOGICAL SURVEY. SAID ELEVATION IS MARKED AS BEING 5966 FEET.

BASIS OF BEARINGS

BASIS OF BEARINGS IS A G.P.S. OBSERVATION.

NOTE:

THE PROPERTY LINE IS LOCATED S26°W 5346' FROM THE PROPOSED WELL HEAD.

East 1/4 Corner
Re-Established by
Single Porportion
Method.

Sheet 1u of 10



CERTIFICATE

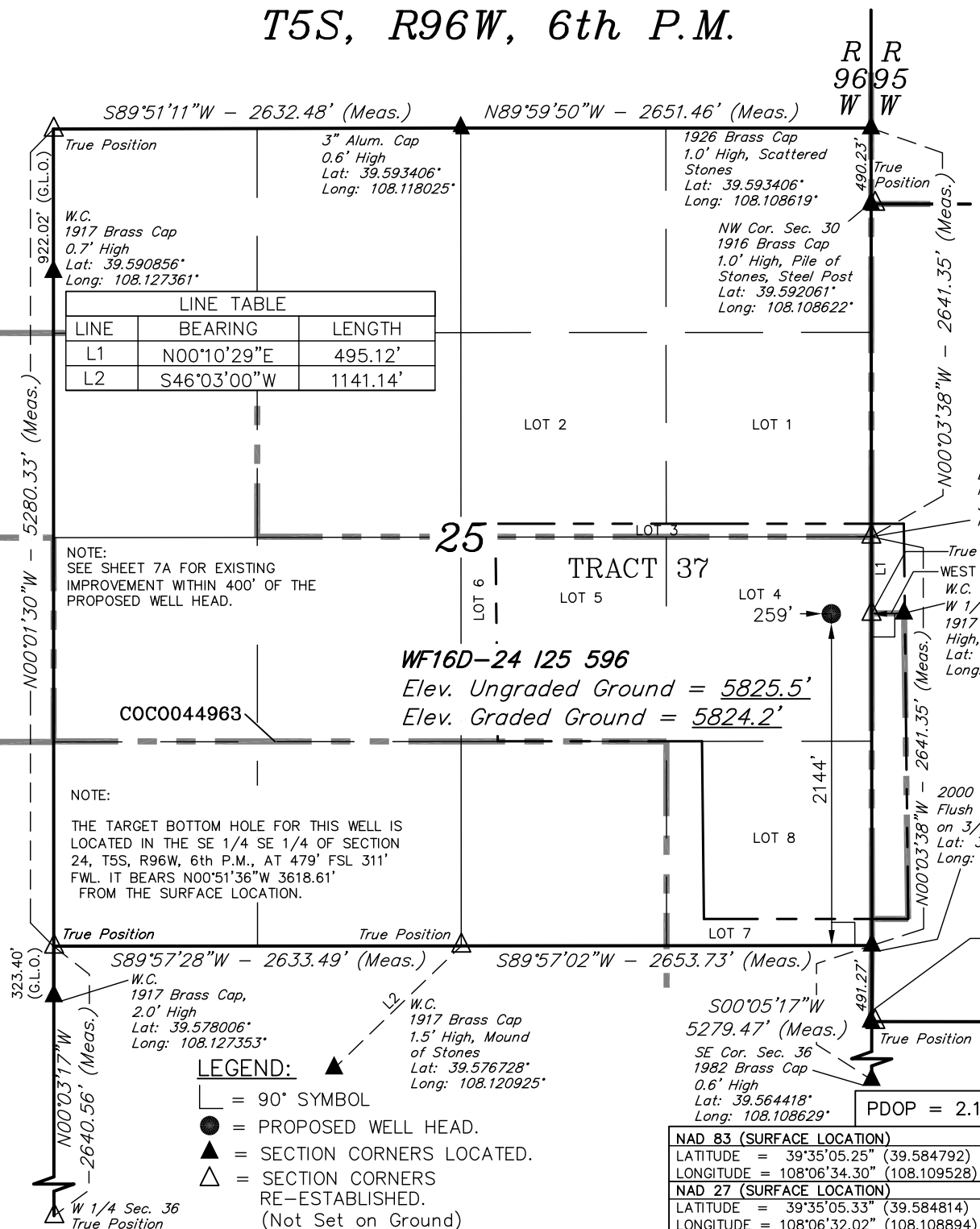
THIS IS TO CERTIFY THAT THE ABOVE PLAT WAS PREPARED AND LOCATION AS SHOWN WAS STAKED ON THE GROUND FROM FIELD NOTES OF ACTUAL SURVEYS MADE BY ME OR UNDER MY SUPERVISION AND THAT THE SAME ARE TRUE AND CORRECT TO THE BEST OF MY KNOWLEDGE AND BELIEF.

REGISTERED LAND SURVEYOR
REGISTRATION NO. 17492
STATE OF COLORADO

REV: 05-14-12

UINTAH ENGINEERING & LAND SURVEYING
85 SOUTH 200 EAST - VERNAL, UTAH 84078
(435) 789-1017

SCALE 1" = 1000'	DATE SURVEYED: 11-08-11	DATE DRAWN: 03-02-12
PARTY B.J. T.M. C.A.G.	REFERENCES G.L.O. PLAT	
WEATHER COLD	FILE Encana OIL & GAS (USA) INC.	



T5S, R96W, 6th P.M.

Encana OIL & GAS (USA) INC.

Well location, WF16D-24 I25 596 (TARGET BOTTOM HOLE), located as shown in the SE 1/4 SE 1/4 of Section 24, T5S, R96W, 6th P.M., Garfield County, Colorado.

BASIS OF ELEVATION

SPOT ELEVATION AT THE NORTHWEST CORNER OF SECTION 30, T5S, R95W, 6th P.M. TAKEN FROM THE FORKED GULCH QUADRANGLE, COLORADO, GARFIELD COUNTY, 7.5 MINUTE SERIES (TOPOGRAPHICAL MAP) PUBLISHED BY THE UNITED STATES DEPARTMENT OF THE INTERIOR, GEOLOGICAL SURVEY. SAID ELEVATION IS MARKED AS BEING 5966 FEET.

BASIS OF BEARINGS

BASIS OF BEARINGS IS A G.P.S. OBSERVATION.

500'04'24"E - 5268.48' (Meas.)

LINE TABLE		
LINE	BEARING	LENGTH
L1	WEST	330.00'
L2	S89°49'06"W	680.86'
L3	N00°01'30"W	922.02'

NOTE:

THE PROPOSED BOTTOM HOLE BEARS N00°51'36"W 3618.61' FROM THE PROPOSED WELL HEAD WHICH IS LOCATED IN LOT 4 (TRACT 37) OF SECTION 25, T5S, R96W, 6th P.M., AT 2144' FSL 259' FEL.

NOTE:

THE LEASE LINE IS LOCATED EAST 311' FROM THE PROPOSED BOTTOM HOLE.

WF16D-24 I25 596
TARGET BOTTOM HOLE

3" Alum. Cap
0.6' High
Lat: 39.593406
Long: 108.118025

W.C. 1916 Brass Cap
1.0' High, 1" Conduit
Lat: 39.599286
Long: 108.108617

W.C. 1916 Brass Cap
2.0' High, "T" Post
Lat: 39.607894
Long: 108.107461

W.C. 1991
Private Alum.
Cap, 1.0' High,
E-W Fenceline,
Pile of Stones
Lat: 39.606547
Long: 108.106214

COC0044963

R 96
W 95

1926 Brass Cap 1.0'
High, Scattered Stones
Lat: 39.593406
Long: 108.108619

SW Cor. Sec. 19
1916 Brass Cap
1.0' High, Pile of
Stones, Steel Post
Lat: 39.592061
Long: 108.108622

500'03'38"E -
2641.35' (Meas.)

East 1/4 Corner 25
Re-Established by
Single Porportion
Method.

NAD 83 (TARGET BOTTOM HOLE)	
LATITUDE	= 39°35'41.00" (39.594722)
LONGITUDE	= 108°06'35.00" (108.109722)
NAD 27 (TARGET BOTTOM HOLE)	
LATITUDE	= 39°35'41.08" (39.594744)
LONGITUDE	= 108°06'32.72" (108.109089)

LEGEND:

- = 90° SYMBOL
- = PROPOSED WELL HEAD.
- ▲ = SECTION CORNERS LOCATED.
- △ = SECTION CORNERS RE-ESTABLISHED (Not Set on Ground)



CERTIFICATE

THIS IS TO CERTIFY THAT THE ABOVE PLAT WAS PREPARED AND LOCATION AS SHOWN WAS STAKED ON THE GROUND FROM FIELD NOTES OF ACTUAL SURVEYS MADE BY ME OR UNDER MY SUPERVISION AND THAT THE SAME ARE TRUE AND CORRECT TO THE BEST OF MY KNOWLEDGE AND BELIEF.

REGISTERED LAND SURVEYOR
REGISTRATION NO. 17492
STATE OF COLORADO

REV: 05-14-12

UINTAH ENGINEERING & LAND SURVEYING
85 SOUTH 200 EAST - VERNAL, UTAH 84078
(435) 789-1017

SCALE 1" = 1000'	DATE SURVEYED: 11-08-11	DATE DRAWN: 03-02-12
PARTY B.J. T.M. C.A.G.	REFERENCES G.L.O. PLAT	
WEATHER COLD	FILE Encana OIL & GAS (USA) INC.	