

T5S, R96W, 6th P.M.

Encana OIL & GAS (USA) INC.

Well location, WF04B-30 125 596 (SURFACE LOCATION), located as shown in Lot 4 (Tract 37) of Section 25, T5S, R96W, 6th P.M., Garfield County, Colorado.

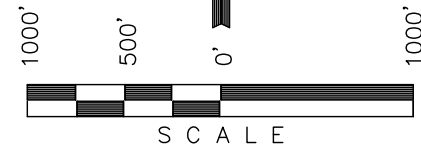
BASIS OF ELEVATION

SPOT ELEVATION AT THE NORTHWEST CORNER OF SECTION 30, T5S, R95W, 6th P.M. TAKEN FROM THE FORKED GULCH QUADRANGLE, COLORADO, GARFIELD COUNTY, 7.5 MINUTE SERIES (TOPOGRAPHICAL MAP) PUBLISHED BY THE UNITED STATES DEPARTMENT OF THE INTERIOR, GEOLOGICAL SURVEY. SAID ELEVATION IS MARKED AS BEING 5966 FEET.

BASIS OF BEARINGS

BASIS OF BEARINGS IS A G.P.S. OBSERVATION.

Sheet 1e of 10



CERTIFICATE

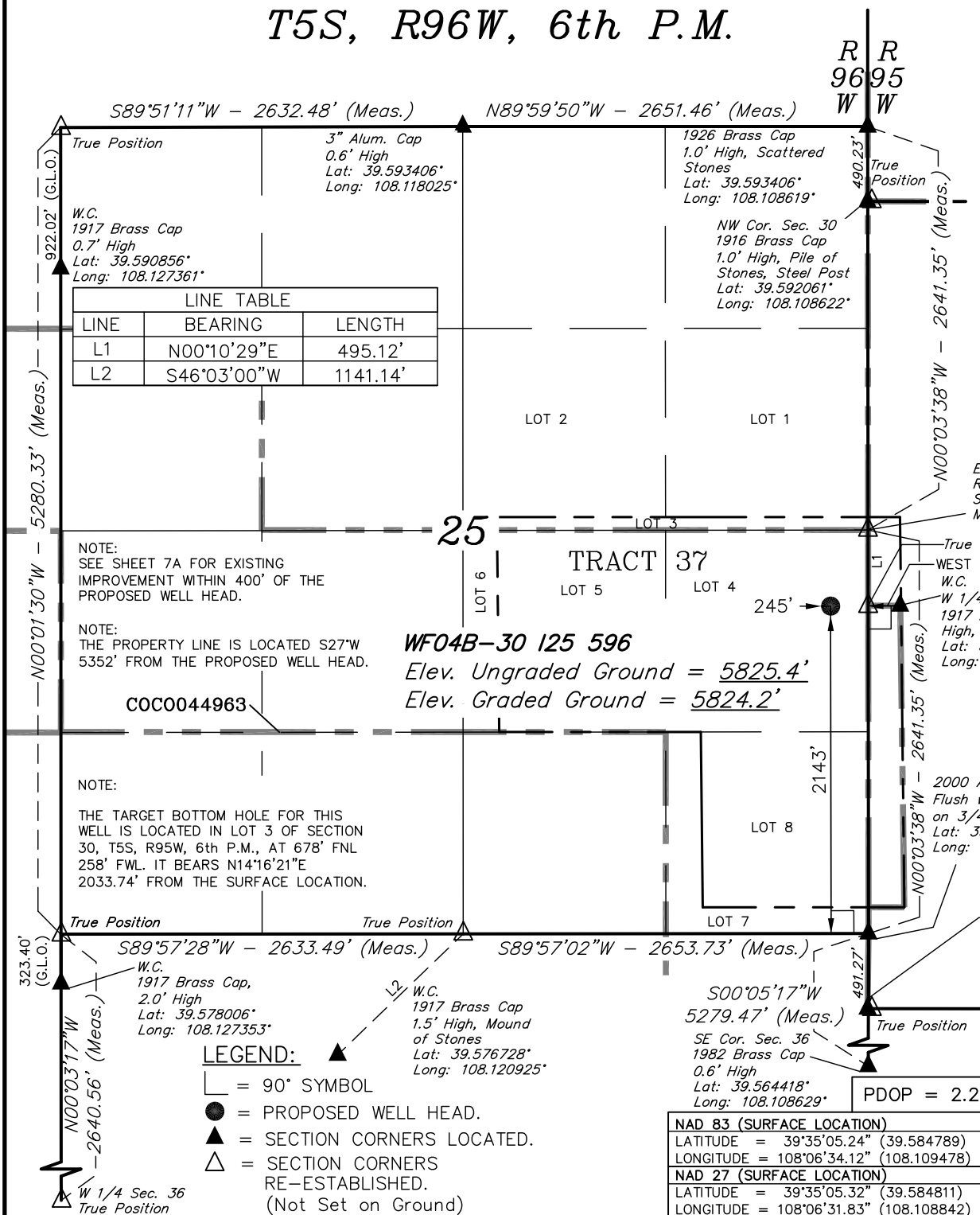
THIS IS TO CERTIFY THAT THE ABOVE PLAT WAS PREPARED AND LOCATION AS SHOWN WAS STAKED ON THE GROUND FROM FIELD NOTES OF ACTUAL SURVEYS MADE BY ME OR UNDER MY SUPERVISION AND THAT THE SAME ARE TRUE AND CORRECT TO THE BEST OF MY KNOWLEDGE AND BELIEF.

REGISTERED LAND SURVEYOR
REGISTRATION NO. 17492
STATE OF COLORADO
05-14-12

REV: 05-14-12





UINTAH ENGINEERING & LAND SURVEYING
85 SOUTH 200 EAST - VERNAL, UTAH 84078
(435) 789-1017

SCALE 1" = 1000'	DATE SURVEYED: 11-08-11	DATE DRAWN: 03-02-12
PARTY B.J. T.M. C.A.G.	REFERENCES G.L.O. PLAT	
WEATHER COLD	FILE Encana OIL & GAS (USA) INC.	



[illegible]

SCALE 1" = 1000'	DATE SURVEYED: 11-08-11	DATE DRAWN: 03-02-12
PARTY B.J. T.M. C.A.G.	REFERENCES G.L.O. PLAT	
WEATHER COLD	FILE Encana OIL & GAS (USA) INC.	

 = 90° SYMBOL
 = PROPOSED WELL HEAD.
 = SECTION CORNERS LOCATED.
 = SECTION CORNERS
 RE-ESTABLISHED.
 (Not Set on Ground)