

T5S, R96W, 6th P.M.

Encana OIL & GAS (USA) INC.

Well location, WF01C-25 I25 596, located as shown in Lot 4 (Tract 37) of Section 25, T5S, R96W, 6th P.M., Garfield County, Colorado.

BASIS OF ELEVATION

SPOT ELEVATION AT THE NORTHWEST CORNER OF SECTION 30, T5S, R95W, 6th P.M. TAKEN FROM THE FORKED GULCH QUADRANGLE, COLORADO, GARFIELD COUNTY, 7.5 MINUTE SERIES (TOPOGRAPHICAL MAP) PUBLISHED BY THE UNITED STATES DEPARTMENT OF THE INTERIOR, GEOLOGICAL SURVEY. SAID ELEVATION IS MARKED AS BEING 5966 FEET.

BASIS OF BEARINGS

BASIS OF BEARINGS IS A G.P.S. OBSERVATION.

Sheet 10 of 10

LEGEND:

- └ = 90° SYMBOL
- = PROPOSED WELL HEAD.
- ▲ = SECTION CORNERS LOCATED.
- △ = SECTION CORNERS RE-ESTABLISHED. (Not Set on Ground)



CERTIFICATE

THIS IS TO CERTIFY THAT THE ABOVE PLAT WAS PREPARED AND LOCATION AS SHOWN WAS STAKED ON THE GROUND FROM FIELD NOTES OF ACTUAL SURVEYS MADE BY ME OR UNDER MY SUPERVISION AND THAT THE SAME ARE TRUE AND CORRECT TO THE BEST OF MY KNOWLEDGE AND BELIEF.

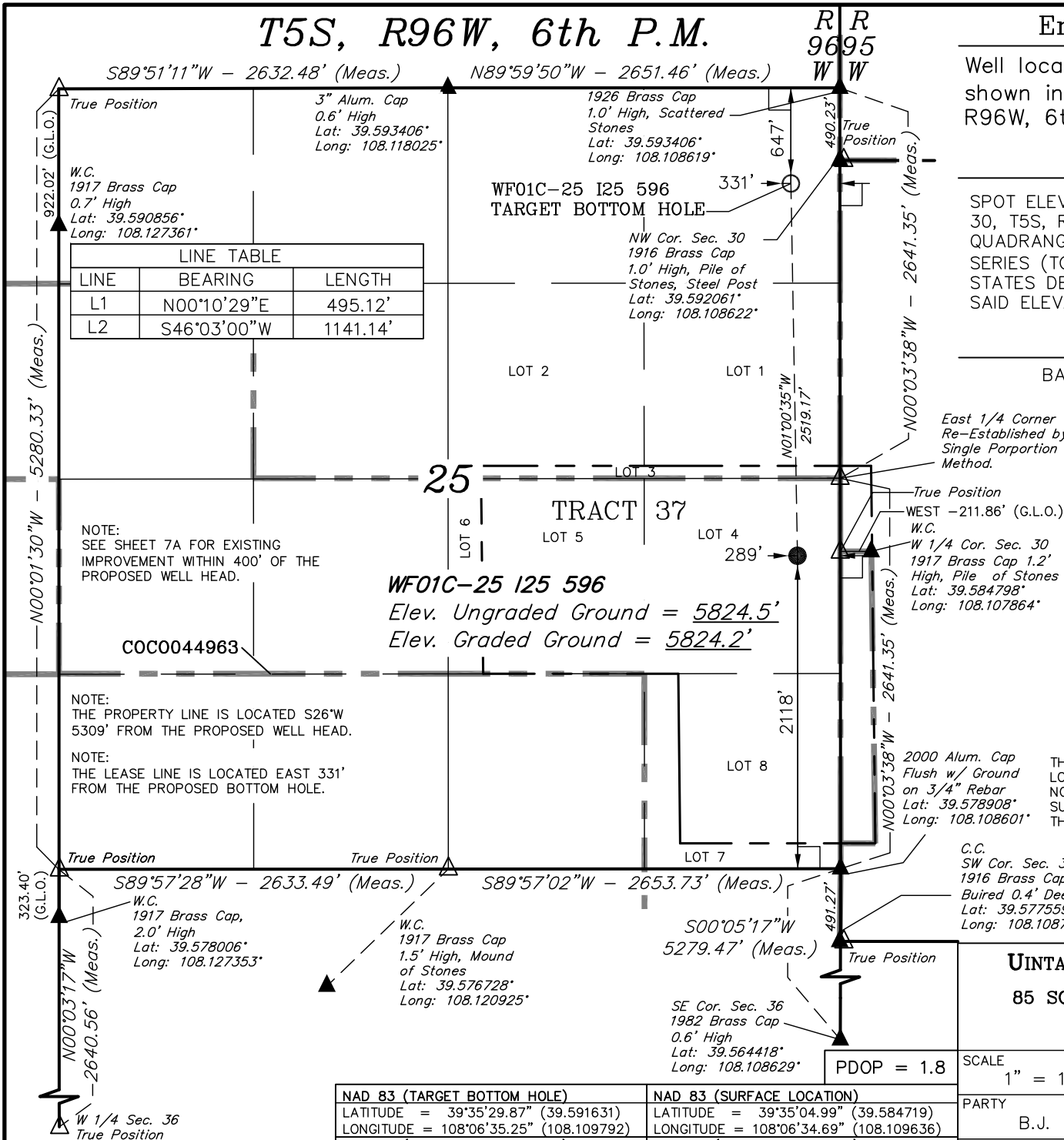
REGISTERED LAND SURVEYOR
REGISTRATION NO. 17492
STATE OF COLORADO

UINTAH ENGINEERING & LAND SURVEYING
85 SOUTH 200 EAST - VERNAL, UTAH 84078
(435) 789-1017

| | | |
|---------------------------|-------------------------------------|-------------------------|
| SCALE 1" = 1000' | DATE SURVEYED: 11-08-11 | DATE DRAWN: 03-02-12 |
| PARTY B.J. T.M. C.A.G. | REFERENCES G.L.O. PLAT | |
| WEATHER COLD | FILE Encana OIL & GAS (USA) INC. | |

| | |
|--|--|
| NAD 83 (TARGET BOTTOM HOLE) | NAD 83 (SURFACE LOCATION) |
| LATITUDE = 39°35'29.87" (39.591631) | LATITUDE = 39°35'04.99" (39.584719) |
| LONGITUDE = 108°06'35.25" (108.109792) | LONGITUDE = 108°06'34.69" (108.109636) |
| NAD 27 (TARGET BOTTOM HOLE) | NAD 27 (SURFACE LOCATION) |
| LATITUDE = 39°35'29.96" (39.591656) | LATITUDE = 39°35'05.07" (39.584742) |
| LONGITUDE = 108°06'32.97" (108.109158) | LONGITUDE = 108°06'32.41" (108.109003) |

PDOP = 1.8



NOTE:
SEE SHEET 7A FOR EXISTING
IMPROVEMENT WITHIN 400' OF THE
PROPOSED WELL HEAD.

COC0044963

NOTE:
THE PROPERTY LINE IS LOCATED S26°W
5309' FROM THE PROPOSED WELL HEAD.

NOTE:
THE LEASE LINE IS LOCATED EAST 331'
FROM THE PROPOSED BOTTOM HOLE.

2000 Alum. Cap
Flush w/ Ground
on 3/4" Rebar
Lat: 39.578908°
Long: 108.108601°

C.C.
SW Cor. Sec. 30
1916 Brass Cap
Buried 0.4' Deep
Lat: 39.577559°
Long: 108.108720°

REV: 05-14-12