

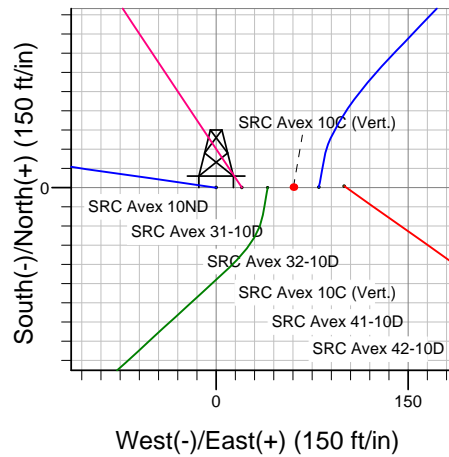
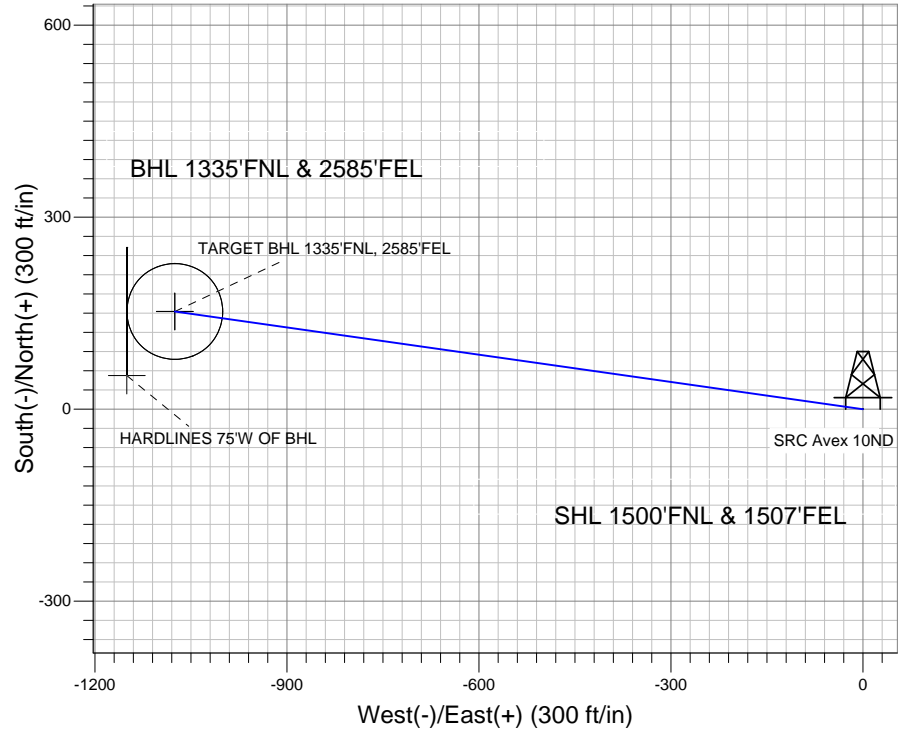
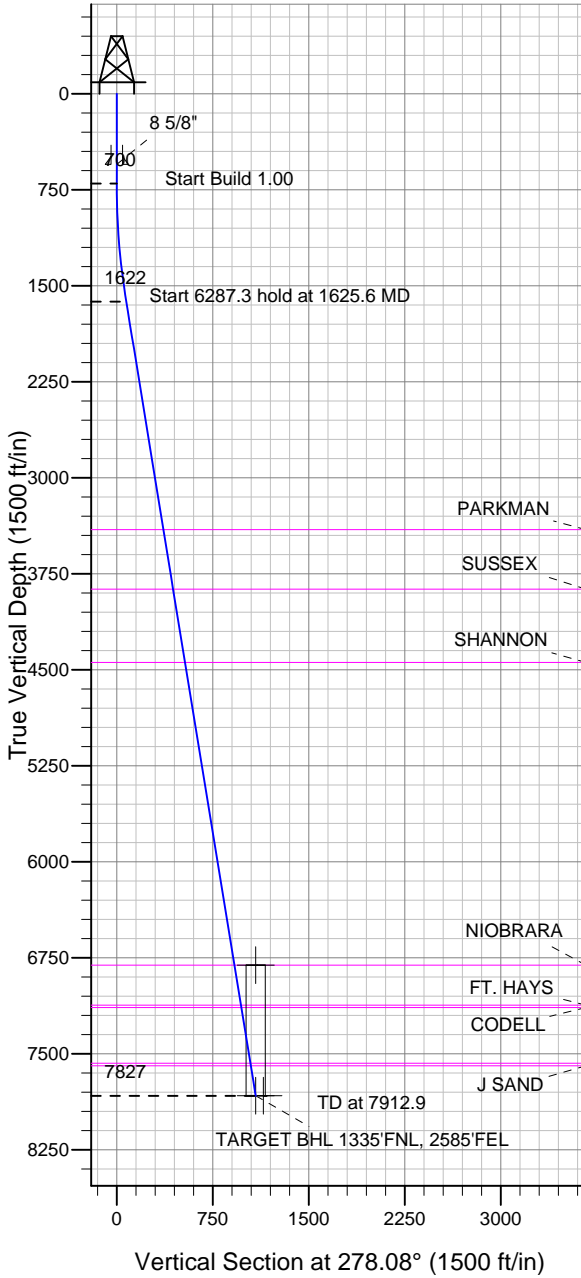
ENSIGN

Directional

Well Name: SRC Avex 10ND

Surface Location: SRC Avex 42-10D Pad Sec.10-T4N-R68W
 North American Datum 1983 US State Plane 1983 Colorado Northern Zone
 Ground Elevation: 5037.0
 +N/-S +E/-W Northing Easting Latitude Longitude Slot
 0.0 0.0 1363965.29 3143526.27 40.331342 -104.985183
 Original Well Elev WELL @ 5050.0ft (Original Well Elev)

Synergy Resources



SRC Avex 42-10D Pad Sec.10-T4N-R68W
 SRC Avex 10ND
 Plan #1 (9-17-12)



Azimuths to True North
 Magnetic North: 8.81°

Magnetic Field
 Strength: 52937.3snT
 Dip Angle: 66.92°
 Date: 9/17/2012
 Model: IGRF2010

WELLBORE TARGET DETAILS (LAT/LONG)

Name	TVD	+N/-S	+E/-W	Latitude	Longitude	Shape
TARGET CIRCLE 1335'FNL, 2585'FNL	6807.0	152.7	-1075.1	40.331761	-104.989039	Circle (Radius: 75.0)
HARDLINES 75'W OF BHL	7827.0	52.7	-1150.1	40.331487	-104.989308	Polygon
TARGET BHL 1335'FNL, 2585'FEL	7827.0	152.7	-1075.1	40.331761	-104.989039	Point

SECTION DETAILS

Sec	MD	Inc	Azi	TVD	+N/-S	+E/-W	DLeg	TFace	VSec	Target
1	0.0	0.00	0.00	0.0	0.0	0.0	0.00	0.00	0.0	
2	700.0	0.00	0.00	700.0	0.0	0.0	0.00	0.00	0.0	
3	1625.6	9.26	278.08	1621.6	10.5	-73.9	1.00	278.08	74.6	
4	7912.9	9.26	278.08	7827.0	152.7	-1075.1	0.00	0.00	1085.9	TARGET BHL 1335'FNL, 2585'FEL



Directional

Synergy Resources

SEC.10-T4N-R68W

SRC Avex 42-10D Pad Sec.10-T4N-R68W

SRC Avex 10ND

Wellbore #1

Plan: Plan #1 (9-17-12)

Standard Planning Report

17 September, 2012

Plan Sections										
Measured Depth (ft)	Inclination (°)	Azimuth (°)	Vertical Depth (ft)	+N/-S (ft)	+E/-W (ft)	Dogleg Rate (°/100ft)	Build Rate (°/100ft)	Turn Rate (°/100ft)	TFO (°)	Target
0.0	0.00	0.00	0.0	0.0	0.0	0.00	0.00	0.00	0.00	
700.0	0.00	0.00	700.0	0.0	0.0	0.00	0.00	0.00	0.00	
1,625.6	9.26	278.08	1,621.6	10.5	-73.9	1.00	1.00	0.00	278.08	
7,912.9	9.26	278.08	7,827.0	152.7	-1,075.1	0.00	0.00	0.00	0.00	TARGET BHL 1335

Database:	Landmark	Local Co-ordinate Reference:	Well SRC Avex 10ND
Company:	Synergy Resources	TVD Reference:	WELL @ 5050.0ft (Original Well Elev)
Project:	SEC.10-T4N-R68W	MD Reference:	WELL @ 5050.0ft (Original Well Elev)
Site:	SRC Avex 42-10D Pad Sec.10-T4N-R68W	North Reference:	True
Well:	SRC Avex 10ND	Survey Calculation Method:	Minimum Curvature
Wellbore:	Wellbore #1		
Design:	Plan #1 (9-17-12)		

Planned Survey									
Measured Depth (ft)	Inclination (°)	Azimuth (°)	Vertical Depth (ft)	+N/-S (ft)	+E/-W (ft)	Vertical Section (ft)	Dogleg Rate (°/100ft)	Build Rate (°/100ft)	Turn Rate (°/100ft)
0.0	0.00	0.00	0.0	0.0	0.0	0.0	0.00	0.00	0.00
40.0	0.00	0.00	40.0	0.0	0.0	0.0	0.00	0.00	0.00
80.0	0.00	0.00	80.0	0.0	0.0	0.0	0.00	0.00	0.00
120.0	0.00	0.00	120.0	0.0	0.0	0.0	0.00	0.00	0.00
160.0	0.00	0.00	160.0	0.0	0.0	0.0	0.00	0.00	0.00
200.0	0.00	0.00	200.0	0.0	0.0	0.0	0.00	0.00	0.00
240.0	0.00	0.00	240.0	0.0	0.0	0.0	0.00	0.00	0.00
280.0	0.00	0.00	280.0	0.0	0.0	0.0	0.00	0.00	0.00
320.0	0.00	0.00	320.0	0.0	0.0	0.0	0.00	0.00	0.00
360.0	0.00	0.00	360.0	0.0	0.0	0.0	0.00	0.00	0.00
400.0	0.00	0.00	400.0	0.0	0.0	0.0	0.00	0.00	0.00
440.0	0.00	0.00	440.0	0.0	0.0	0.0	0.00	0.00	0.00
480.0	0.00	0.00	480.0	0.0	0.0	0.0	0.00	0.00	0.00
520.0	0.00	0.00	520.0	0.0	0.0	0.0	0.00	0.00	0.00
550.0	0.00	0.00	550.0	0.0	0.0	0.0	0.00	0.00	0.00
8 5/8"									
560.0	0.00	0.00	560.0	0.0	0.0	0.0	0.00	0.00	0.00
600.0	0.00	0.00	600.0	0.0	0.0	0.0	0.00	0.00	0.00
640.0	0.00	0.00	640.0	0.0	0.0	0.0	0.00	0.00	0.00
680.0	0.00	0.00	680.0	0.0	0.0	0.0	0.00	0.00	0.00
700.0	0.00	0.00	700.0	0.0	0.0	0.0	0.00	0.00	0.00
720.0	0.20	278.08	720.0	0.0	0.0	0.0	1.00	1.00	0.00
760.0	0.60	278.08	760.0	0.0	-0.3	0.3	1.00	1.00	0.00
800.0	1.00	278.08	800.0	0.1	-0.9	0.9	1.00	1.00	0.00
840.0	1.40	278.08	840.0	0.2	-1.7	1.7	1.00	1.00	0.00
880.0	1.80	278.08	880.0	0.4	-2.8	2.8	1.00	1.00	0.00
920.0	2.20	278.08	919.9	0.6	-4.2	4.2	1.00	1.00	0.00
960.0	2.60	278.08	959.9	0.8	-5.8	5.9	1.00	1.00	0.00
1,000.0	3.00	278.08	999.9	1.1	-7.8	7.9	1.00	1.00	0.00
1,040.0	3.40	278.08	1,039.8	1.4	-10.0	10.1	1.00	1.00	0.00
1,080.0	3.80	278.08	1,079.7	1.8	-12.5	12.6	1.00	1.00	0.00
1,120.0	4.20	278.08	1,119.6	2.2	-15.2	15.4	1.00	1.00	0.00
1,160.0	4.60	278.08	1,159.5	2.6	-18.3	18.5	1.00	1.00	0.00
1,200.0	5.00	278.08	1,199.4	3.1	-21.6	21.8	1.00	1.00	0.00
1,240.0	5.40	278.08	1,239.2	3.6	-25.2	25.4	1.00	1.00	0.00
1,280.0	5.80	278.08	1,279.0	4.1	-29.0	29.3	1.00	1.00	0.00
1,320.0	6.20	278.08	1,318.8	4.7	-33.2	33.5	1.00	1.00	0.00
1,360.0	6.60	278.08	1,358.5	5.3	-37.6	38.0	1.00	1.00	0.00
1,400.0	7.00	278.08	1,398.3	6.0	-42.3	42.7	1.00	1.00	0.00
1,440.0	7.40	278.08	1,437.9	6.7	-47.2	47.7	1.00	1.00	0.00
1,480.0	7.80	278.08	1,477.6	7.5	-52.5	53.0	1.00	1.00	0.00
1,520.0	8.20	278.08	1,517.2	8.2	-58.0	58.6	1.00	1.00	0.00
1,560.0	8.60	278.08	1,556.8	9.1	-63.8	64.4	1.00	1.00	0.00
1,600.0	9.00	278.08	1,596.3	9.9	-69.8	70.5	1.00	1.00	0.00
1,625.6	9.26	278.08	1,621.6	10.5	-73.9	74.6	1.00	1.00	0.00
1,640.0	9.26	278.08	1,635.8	10.8	-76.2	76.9	0.00	0.00	0.00
1,680.0	9.26	278.08	1,675.3	11.7	-82.5	83.4	0.00	0.00	0.00
1,720.0	9.26	278.08	1,714.8	12.6	-88.9	89.8	0.00	0.00	0.00
1,760.0	9.26	278.08	1,754.2	13.5	-95.3	96.2	0.00	0.00	0.00
1,800.0	9.26	278.08	1,793.7	14.4	-101.6	102.7	0.00	0.00	0.00
1,840.0	9.26	278.08	1,833.2	15.3	-108.0	109.1	0.00	0.00	0.00
1,880.0	9.26	278.08	1,872.7	16.2	-114.4	115.5	0.00	0.00	0.00
1,920.0	9.26	278.08	1,912.1	17.1	-120.7	122.0	0.00	0.00	0.00
1,960.0	9.26	278.08	1,951.6	18.1	-127.1	128.4	0.00	0.00	0.00

Database:	Landmark	Local Co-ordinate Reference:	Well SRC Avex 10ND
Company:	Synergy Resources	TVD Reference:	WELL @ 5050.0ft (Original Well Elev)
Project:	SEC.10-T4N-R68W	MD Reference:	WELL @ 5050.0ft (Original Well Elev)
Site:	SRC Avex 42-10D Pad Sec.10-T4N-R68W	North Reference:	True
Well:	SRC Avex 10ND	Survey Calculation Method:	Minimum Curvature
Wellbore:	Wellbore #1		
Design:	Plan #1 (9-17-12)		

Planned Survey									
Measured Depth (ft)	Inclination (°)	Azimuth (°)	Vertical Depth (ft)	+N/-S (ft)	+E/-W (ft)	Vertical Section (ft)	Dogleg Rate (°/100ft)	Build Rate (°/100ft)	Turn Rate (°/100ft)
2,000.0	9.26	278.08	1,991.1	19.0	-133.5	134.8	0.00	0.00	0.00
2,040.0	9.26	278.08	2,030.6	19.9	-139.9	141.3	0.00	0.00	0.00
2,080.0	9.26	278.08	2,070.1	20.8	-146.2	147.7	0.00	0.00	0.00
2,120.0	9.26	278.08	2,109.5	21.7	-152.6	154.1	0.00	0.00	0.00
2,160.0	9.26	278.08	2,149.0	22.6	-159.0	160.6	0.00	0.00	0.00
2,200.0	9.26	278.08	2,188.5	23.5	-165.3	167.0	0.00	0.00	0.00
2,240.0	9.26	278.08	2,228.0	24.4	-171.7	173.4	0.00	0.00	0.00
2,280.0	9.26	278.08	2,267.5	25.3	-178.1	179.9	0.00	0.00	0.00
2,320.0	9.26	278.08	2,306.9	26.2	-184.4	186.3	0.00	0.00	0.00
2,360.0	9.26	278.08	2,346.4	27.1	-190.8	192.7	0.00	0.00	0.00
2,400.0	9.26	278.08	2,385.9	28.0	-197.2	199.2	0.00	0.00	0.00
2,440.0	9.26	278.08	2,425.4	28.9	-203.5	205.6	0.00	0.00	0.00
2,480.0	9.26	278.08	2,464.9	29.8	-209.9	212.0	0.00	0.00	0.00
2,520.0	9.26	278.08	2,504.3	30.7	-216.3	218.5	0.00	0.00	0.00
2,560.0	9.26	278.08	2,543.8	31.6	-222.7	224.9	0.00	0.00	0.00
2,600.0	9.26	278.08	2,583.3	32.5	-229.0	231.3	0.00	0.00	0.00
2,640.0	9.26	278.08	2,622.8	33.4	-235.4	237.8	0.00	0.00	0.00
2,680.0	9.26	278.08	2,662.3	34.3	-241.8	244.2	0.00	0.00	0.00
2,720.0	9.26	278.08	2,701.7	35.2	-248.1	250.6	0.00	0.00	0.00
2,760.0	9.26	278.08	2,741.2	36.1	-254.5	257.1	0.00	0.00	0.00
2,800.0	9.26	278.08	2,780.7	37.1	-260.9	263.5	0.00	0.00	0.00
2,840.0	9.26	278.08	2,820.2	38.0	-267.2	269.9	0.00	0.00	0.00
2,880.0	9.26	278.08	2,859.6	38.9	-273.6	276.4	0.00	0.00	0.00
2,920.0	9.26	278.08	2,899.1	39.8	-280.0	282.8	0.00	0.00	0.00
2,960.0	9.26	278.08	2,938.6	40.7	-286.4	289.2	0.00	0.00	0.00
3,000.0	9.26	278.08	2,978.1	41.6	-292.7	295.7	0.00	0.00	0.00
3,040.0	9.26	278.08	3,017.6	42.5	-299.1	302.1	0.00	0.00	0.00
3,080.0	9.26	278.08	3,057.0	43.4	-305.5	308.5	0.00	0.00	0.00
3,120.0	9.26	278.08	3,096.5	44.3	-311.8	315.0	0.00	0.00	0.00
3,160.0	9.26	278.08	3,136.0	45.2	-318.2	321.4	0.00	0.00	0.00
3,200.0	9.26	278.08	3,175.5	46.1	-324.6	327.8	0.00	0.00	0.00
3,240.0	9.26	278.08	3,215.0	47.0	-330.9	334.3	0.00	0.00	0.00
3,280.0	9.26	278.08	3,254.4	47.9	-337.3	340.7	0.00	0.00	0.00
3,320.0	9.26	278.08	3,293.9	48.8	-343.7	347.1	0.00	0.00	0.00
3,360.0	9.26	278.08	3,333.4	49.7	-350.1	353.6	0.00	0.00	0.00
3,400.0	9.26	278.08	3,372.9	50.6	-356.4	360.0	0.00	0.00	0.00
3,432.5	9.26	278.08	3,405.0	51.4	-361.6	365.2	0.00	0.00	0.00
PARKMAN									
3,440.0	9.26	278.08	3,412.4	51.5	-362.8	366.4	0.00	0.00	0.00
3,480.0	9.26	278.08	3,451.8	52.4	-369.2	372.9	0.00	0.00	0.00
3,520.0	9.26	278.08	3,491.3	53.3	-375.5	379.3	0.00	0.00	0.00
3,560.0	9.26	278.08	3,530.8	54.2	-381.9	385.7	0.00	0.00	0.00
3,600.0	9.26	278.08	3,570.3	55.1	-388.3	392.2	0.00	0.00	0.00
3,640.0	9.26	278.08	3,609.8	56.0	-394.6	398.6	0.00	0.00	0.00
3,680.0	9.26	278.08	3,649.2	57.0	-401.0	405.0	0.00	0.00	0.00
3,720.0	9.26	278.08	3,688.7	57.9	-407.4	411.5	0.00	0.00	0.00
3,760.0	9.26	278.08	3,728.2	58.8	-413.7	417.9	0.00	0.00	0.00
3,800.0	9.26	278.08	3,767.7	59.7	-420.1	424.3	0.00	0.00	0.00
3,840.0	9.26	278.08	3,807.1	60.6	-426.5	430.8	0.00	0.00	0.00
3,880.0	9.26	278.08	3,846.6	61.5	-432.9	437.2	0.00	0.00	0.00
3,902.7	9.26	278.08	3,869.0	62.0	-436.5	440.8	0.00	0.00	0.00
SUSSEX									
3,920.0	9.26	278.08	3,886.1	62.4	-439.2	443.6	0.00	0.00	0.00
3,960.0	9.26	278.08	3,925.6	63.3	-445.6	450.1	0.00	0.00	0.00

Database:	Landmark	Local Co-ordinate Reference:	Well SRC Avex 10ND
Company:	Synergy Resources	TVD Reference:	WELL @ 5050.0ft (Original Well Elev)
Project:	SEC.10-T4N-R68W	MD Reference:	WELL @ 5050.0ft (Original Well Elev)
Site:	SRC Avex 42-10D Pad Sec.10-T4N-R68W	North Reference:	True
Well:	SRC Avex 10ND	Survey Calculation Method:	Minimum Curvature
Wellbore:	Wellbore #1		
Design:	Plan #1 (9-17-12)		

Planned Survey									
Measured Depth (ft)	Inclination (°)	Azimuth (°)	Vertical Depth (ft)	+N/-S (ft)	+E/-W (ft)	Vertical Section (ft)	Dogleg Rate (°/100ft)	Build Rate (°/100ft)	Turn Rate (°/100ft)
4,000.0	9.26	278.08	3,965.1	64.2	-452.0	456.5	0.00	0.00	0.00
4,040.0	9.26	278.08	4,004.5	65.1	-458.3	462.9	0.00	0.00	0.00
4,080.0	9.26	278.08	4,044.0	66.0	-464.7	469.4	0.00	0.00	0.00
4,120.0	9.26	278.08	4,083.5	66.9	-471.1	475.8	0.00	0.00	0.00
4,160.0	9.26	278.08	4,123.0	67.8	-477.4	482.2	0.00	0.00	0.00
4,200.0	9.26	278.08	4,162.5	68.7	-483.8	488.7	0.00	0.00	0.00
4,240.0	9.26	278.08	4,201.9	69.6	-490.2	495.1	0.00	0.00	0.00
4,280.0	9.26	278.08	4,241.4	70.5	-496.6	501.5	0.00	0.00	0.00
4,320.0	9.26	278.08	4,280.9	71.4	-502.9	508.0	0.00	0.00	0.00
4,360.0	9.26	278.08	4,320.4	72.3	-509.3	514.4	0.00	0.00	0.00
4,400.0	9.26	278.08	4,359.9	73.2	-515.7	520.8	0.00	0.00	0.00
4,440.0	9.26	278.08	4,399.3	74.1	-522.0	527.3	0.00	0.00	0.00
4,480.0	9.26	278.08	4,438.8	75.0	-528.4	533.7	0.00	0.00	0.00
4,482.2	9.26	278.08	4,441.0	75.1	-528.8	534.1	0.00	0.00	0.00
SHANNON									
4,520.0	9.26	278.08	4,478.3	76.0	-534.8	540.1	0.00	0.00	0.00
4,560.0	9.26	278.08	4,517.8	76.9	-541.1	546.6	0.00	0.00	0.00
4,600.0	9.26	278.08	4,557.3	77.8	-547.5	553.0	0.00	0.00	0.00
4,640.0	9.26	278.08	4,596.7	78.7	-553.9	559.4	0.00	0.00	0.00
4,680.0	9.26	278.08	4,636.2	79.6	-560.3	565.9	0.00	0.00	0.00
4,720.0	9.26	278.08	4,675.7	80.5	-566.6	572.3	0.00	0.00	0.00
4,760.0	9.26	278.08	4,715.2	81.4	-573.0	578.7	0.00	0.00	0.00
4,800.0	9.26	278.08	4,754.6	82.3	-579.4	585.2	0.00	0.00	0.00
4,840.0	9.26	278.08	4,794.1	83.2	-585.7	591.6	0.00	0.00	0.00
4,880.0	9.26	278.08	4,833.6	84.1	-592.1	598.0	0.00	0.00	0.00
4,920.0	9.26	278.08	4,873.1	85.0	-598.5	604.5	0.00	0.00	0.00
4,960.0	9.26	278.08	4,912.6	85.9	-604.8	610.9	0.00	0.00	0.00
5,000.0	9.26	278.08	4,952.0	86.8	-611.2	617.3	0.00	0.00	0.00
5,040.0	9.26	278.08	4,991.5	87.7	-617.6	623.8	0.00	0.00	0.00
5,080.0	9.26	278.08	5,031.0	88.6	-623.9	630.2	0.00	0.00	0.00
5,120.0	9.26	278.08	5,070.5	89.5	-630.3	636.6	0.00	0.00	0.00
5,160.0	9.26	278.08	5,110.0	90.4	-636.7	643.1	0.00	0.00	0.00
5,200.0	9.26	278.08	5,149.4	91.3	-643.1	649.5	0.00	0.00	0.00
5,240.0	9.26	278.08	5,188.9	92.2	-649.4	655.9	0.00	0.00	0.00
5,280.0	9.26	278.08	5,228.4	93.1	-655.8	662.4	0.00	0.00	0.00
5,320.0	9.26	278.08	5,267.9	94.0	-662.2	668.8	0.00	0.00	0.00
5,360.0	9.26	278.08	5,307.4	95.0	-668.5	675.2	0.00	0.00	0.00
5,400.0	9.26	278.08	5,346.8	95.9	-674.9	681.7	0.00	0.00	0.00
5,440.0	9.26	278.08	5,386.3	96.8	-681.3	688.1	0.00	0.00	0.00
5,480.0	9.26	278.08	5,425.8	97.7	-687.6	694.5	0.00	0.00	0.00
5,520.0	9.26	278.08	5,465.3	98.6	-694.0	701.0	0.00	0.00	0.00
5,560.0	9.26	278.08	5,504.8	99.5	-700.4	707.4	0.00	0.00	0.00
5,600.0	9.26	278.08	5,544.2	100.4	-706.8	713.8	0.00	0.00	0.00
5,640.0	9.26	278.08	5,583.7	101.3	-713.1	720.3	0.00	0.00	0.00
5,680.0	9.26	278.08	5,623.2	102.2	-719.5	726.7	0.00	0.00	0.00
5,720.0	9.26	278.08	5,662.7	103.1	-725.9	733.1	0.00	0.00	0.00
5,760.0	9.26	278.08	5,702.2	104.0	-732.2	739.6	0.00	0.00	0.00
5,800.0	9.26	278.08	5,741.6	104.9	-738.6	746.0	0.00	0.00	0.00
5,840.0	9.26	278.08	5,781.1	105.8	-745.0	752.4	0.00	0.00	0.00
5,880.0	9.26	278.08	5,820.6	106.7	-751.3	758.9	0.00	0.00	0.00
5,920.0	9.26	278.08	5,860.1	107.6	-757.7	765.3	0.00	0.00	0.00
5,960.0	9.26	278.08	5,899.5	108.5	-764.1	771.8	0.00	0.00	0.00
6,000.0	9.26	278.08	5,939.0	109.4	-770.5	778.2	0.00	0.00	0.00

Database:	Landmark	Local Co-ordinate Reference:	Well SRC Avex 10ND
Company:	Synergy Resources	TVD Reference:	WELL @ 5050.0ft (Original Well Elev)
Project:	SEC.10-T4N-R68W	MD Reference:	WELL @ 5050.0ft (Original Well Elev)
Site:	SRC Avex 42-10D Pad Sec.10-T4N-R68W	North Reference:	True
Well:	SRC Avex 10ND	Survey Calculation Method:	Minimum Curvature
Wellbore:	Wellbore #1		
Design:	Plan #1 (9-17-12)		

Planned Survey									
Measured Depth (ft)	Inclination (°)	Azimuth (°)	Vertical Depth (ft)	+N/-S (ft)	+E/-W (ft)	Vertical Section (ft)	Dogleg Rate (°/100ft)	Build Rate (°/100ft)	Turn Rate (°/100ft)
6,040.0	9.26	278.08	5,978.5	110.3	-776.8	784.6	0.00	0.00	0.00
6,080.0	9.26	278.08	6,018.0	111.2	-783.2	791.1	0.00	0.00	0.00
6,120.0	9.26	278.08	6,057.5	112.1	-789.6	797.5	0.00	0.00	0.00
6,160.0	9.26	278.08	6,096.9	113.0	-795.9	803.9	0.00	0.00	0.00
6,200.0	9.26	278.08	6,136.4	113.9	-802.3	810.4	0.00	0.00	0.00
6,240.0	9.26	278.08	6,175.9	114.9	-808.7	816.8	0.00	0.00	0.00
6,280.0	9.26	278.08	6,215.4	115.8	-815.0	823.2	0.00	0.00	0.00
6,320.0	9.26	278.08	6,254.9	116.7	-821.4	829.7	0.00	0.00	0.00
6,360.0	9.26	278.08	6,294.3	117.6	-827.8	836.1	0.00	0.00	0.00
6,400.0	9.26	278.08	6,333.8	118.5	-834.1	842.5	0.00	0.00	0.00
6,440.0	9.26	278.08	6,373.3	119.4	-840.5	849.0	0.00	0.00	0.00
6,480.0	9.26	278.08	6,412.8	120.3	-846.9	855.4	0.00	0.00	0.00
6,520.0	9.26	278.08	6,452.3	121.2	-853.3	861.8	0.00	0.00	0.00
6,560.0	9.26	278.08	6,491.7	122.1	-859.6	868.3	0.00	0.00	0.00
6,600.0	9.26	278.08	6,531.2	123.0	-866.0	874.7	0.00	0.00	0.00
6,640.0	9.26	278.08	6,570.7	123.9	-872.4	881.1	0.00	0.00	0.00
6,680.0	9.26	278.08	6,610.2	124.8	-878.7	887.6	0.00	0.00	0.00
6,720.0	9.26	278.08	6,649.7	125.7	-885.1	894.0	0.00	0.00	0.00
6,760.0	9.26	278.08	6,689.1	126.6	-891.5	900.4	0.00	0.00	0.00
6,800.0	9.26	278.08	6,728.6	127.5	-897.8	906.9	0.00	0.00	0.00
6,840.0	9.26	278.08	6,768.1	128.4	-904.2	913.3	0.00	0.00	0.00
6,879.4	9.26	278.08	6,807.0	129.3	-910.5	919.6	0.00	0.00	0.00
NIOBRARA									
6,880.0	9.26	278.08	6,807.6	129.3	-910.6	919.7	0.00	0.00	0.00
6,920.0	9.26	278.08	6,847.0	130.2	-917.0	926.2	0.00	0.00	0.00
6,960.0	9.26	278.08	6,886.5	131.1	-923.3	932.6	0.00	0.00	0.00
7,000.0	9.26	278.08	6,926.0	132.0	-929.7	939.0	0.00	0.00	0.00
7,040.0	9.26	278.08	6,965.5	132.9	-936.1	945.5	0.00	0.00	0.00
7,080.0	9.26	278.08	7,005.0	133.9	-942.4	951.9	0.00	0.00	0.00
7,120.0	9.26	278.08	7,044.4	134.8	-948.8	958.3	0.00	0.00	0.00
7,160.0	9.26	278.08	7,083.9	135.7	-955.2	964.8	0.00	0.00	0.00
7,194.5	9.26	278.08	7,118.0	136.4	-960.7	970.3	0.00	0.00	0.00
FT. HAYS									
7,200.0	9.26	278.08	7,123.4	136.6	-961.5	971.2	0.00	0.00	0.00
7,214.8	9.26	278.08	7,138.0	136.9	-963.9	973.6	0.00	0.00	0.00
CODELL									
7,240.0	9.26	278.08	7,162.9	137.5	-967.9	977.6	0.00	0.00	0.00
7,280.0	9.26	278.08	7,202.4	138.4	-974.3	984.1	0.00	0.00	0.00
7,320.0	9.26	278.08	7,241.8	139.3	-980.7	990.5	0.00	0.00	0.00
7,360.0	9.26	278.08	7,281.3	140.2	-987.0	996.9	0.00	0.00	0.00
7,400.0	9.26	278.08	7,320.8	141.1	-993.4	1,003.4	0.00	0.00	0.00
7,440.0	9.26	278.08	7,360.3	142.0	-999.8	1,009.8	0.00	0.00	0.00
7,480.0	9.26	278.08	7,399.8	142.9	-1,006.1	1,016.2	0.00	0.00	0.00
7,520.0	9.26	278.08	7,439.2	143.8	-1,012.5	1,022.7	0.00	0.00	0.00
7,560.0	9.26	278.08	7,478.7	144.7	-1,018.9	1,029.1	0.00	0.00	0.00
7,600.0	9.26	278.08	7,518.2	145.6	-1,025.2	1,035.5	0.00	0.00	0.00
7,640.0	9.26	278.08	7,557.7	146.5	-1,031.6	1,042.0	0.00	0.00	0.00
7,655.5	9.26	278.08	7,573.0	146.9	-1,034.1	1,044.5	0.00	0.00	0.00
J SILT									
7,675.8	9.26	278.08	7,593.0	147.3	-1,037.3	1,047.7	0.00	0.00	0.00
J SAND									
7,680.0	9.26	278.08	7,597.2	147.4	-1,038.0	1,048.4	0.00	0.00	0.00
7,720.0	9.26	278.08	7,636.6	148.3	-1,044.3	1,054.8	0.00	0.00	0.00

Database: Landmark
Company: Synergy Resources
Project: SEC.10-T4N-R68W
Site: SRC Avex 42-10D Pad Sec.10-T4N-R68W
Well: SRC Avex 10ND
Wellbore: Wellbore #1
Design: Plan #1 (9-17-12)

Local Co-ordinate Reference: Well SRC Avex 10ND
TVD Reference: WELL @ 5050.0ft (Original Well Elev)
MD Reference: WELL @ 5050.0ft (Original Well Elev)
North Reference: True
Survey Calculation Method: Minimum Curvature

Planned Survey

Measured Depth (ft)	Inclination (°)	Azimuth (°)	Vertical Depth (ft)	+N/-S (ft)	+E/-W (ft)	Vertical Section (ft)	Dogleg Rate (°/100ft)	Build Rate (°/100ft)	Turn Rate (°/100ft)
7,760.0	9.26	278.08	7,676.1	149.2	-1,050.7	1,061.3	0.00	0.00	0.00
7,800.0	9.26	278.08	7,715.6	150.1	-1,057.1	1,067.7	0.00	0.00	0.00
7,840.0	9.26	278.08	7,755.1	151.0	-1,063.5	1,074.1	0.00	0.00	0.00
7,880.0	9.26	278.08	7,794.5	151.9	-1,069.8	1,080.6	0.00	0.00	0.00
7,912.9	9.26	278.08	7,827.0	152.7	-1,075.1	1,085.9	0.00	0.00	0.00

Casing Points

Measured Depth (ft)	Vertical Depth (ft)	Name	Casing Diameter (")	Hole Diameter (")
550.0	550.0	8 5/8"	8-5/8	12-1/4

Formations

Measured Depth (ft)	Vertical Depth (ft)	Name	Lithology	Dip (°)	Dip Direction (°)
3,432.5	3,405.0	PARKMAN		0.00	
3,902.7	3,869.0	SUSSEX		0.00	
4,482.2	4,441.0	SHANNON		0.00	
6,879.4	6,807.0	NIOBRARA		0.00	
7,194.5	7,118.0	FT. HAYS		0.00	
7,214.8	7,138.0	CODELL		0.00	
7,655.5	7,573.0	J SILT		0.00	
7,675.8	7,593.0	J SAND		0.00	



Directional

Synergy Resources

SEC.10-T4N-R68W

SRC Avex 42-10D Pad Sec.10-T4N-R68W

SRC Avex 10ND

Wellbore #1

Plan #1 (9-17-12)

Anticollision Report

17 September, 2012

Company:	Synergy Resources	Local Co-ordinate Reference:	Well SRC Avex 10ND
Project:	SEC.10-T4N-R68W	TVD Reference:	WELL @ 5050.0ft (Original Well Elev)
Reference Site:	SRC Avex 42-10D Pad Sec.10-T4N-R68W	MD Reference:	WELL @ 5050.0ft (Original Well Elev)
Site Error:	0.0ft	North Reference:	True
Reference Well:	SRC Avex 10ND	Survey Calculation Method:	Minimum Curvature
Well Error:	0.0ft	Output errors are at	2.00 sigma
Reference Wellbore	Wellbore #1	Database:	Landmark
Reference Design:	Plan #1 (9-17-12)	Offset TVD Reference:	Offset Datum

Offset Design SRC Avex 42-10D Pad Sec.10-T4N-R68W - SRC Avex 31-10D - Wellbore #1 - Plan #1 (7-12-11)													Offset Site Error:	0.0 ft
Survey Program: 0-MWD													Offset Well Error:	0.0 ft
Reference		Offset		Semi Major Axis			Distance							Warning
Measured Depth (ft)	Vertical Depth (ft)	Measured Depth (ft)	Vertical Depth (ft)	Reference (ft)	Offset (ft)	Highside Toolface (°)	Offset Wellbore Centre +N/-S (ft)	+E/-W (ft)	Between Centres (ft)	Between Ellipses (ft)	Minimum Separation (ft)	Separation Factor		
2,200.0	2,188.5	2,197.7	2,189.8	5.7	5.3	138.56	100.4	-46.9	141.3	130.8	10.43	13.542		
2,300.0	2,287.2	2,296.8	2,287.4	6.1	5.6	136.15	114.5	-56.2	153.3	142.2	11.10	13.809		
2,400.0	2,385.9	2,395.9	2,385.1	6.4	6.0	134.10	128.5	-65.6	165.6	153.8	11.78	14.053		
2,500.0	2,484.6	2,495.0	2,482.7	6.8	6.3	132.34	142.5	-74.9	178.1	165.6	12.47	14.277		
2,600.0	2,583.3	2,594.1	2,580.3	7.2	6.6	130.80	156.6	-84.3	190.7	177.5	13.17	14.482		
2,700.0	2,682.0	2,693.1	2,678.0	7.5	7.0	129.46	170.6	-93.6	203.4	189.5	13.86	14.671		
2,800.0	2,780.7	2,792.2	2,775.6	7.9	7.4	128.28	184.6	-103.0	216.2	201.7	14.57	14.844		
2,900.0	2,879.4	2,891.3	2,873.2	8.3	7.7	127.22	198.7	-112.3	229.1	213.9	15.27	15.004		
3,000.0	2,978.1	2,990.4	2,970.9	8.6	8.1	126.29	212.7	-121.7	242.1	226.1	15.98	15.151		
3,100.0	3,076.8	3,089.5	3,068.5	9.0	8.4	125.44	226.8	-131.0	255.1	238.4	16.69	15.288		
3,200.0	3,175.5	3,188.6	3,166.1	9.4	8.8	124.68	240.8	-140.4	268.2	250.8	17.40	15.415		
3,300.0	3,274.2	3,287.6	3,263.8	9.8	9.2	123.99	254.8	-149.8	281.3	263.2	18.11	15.532		
3,400.0	3,372.9	3,386.7	3,361.4	10.1	9.6	123.36	268.9	-159.1	294.5	275.7	18.83	15.642		
3,500.0	3,471.6	3,485.8	3,459.0	10.5	9.9	122.78	282.9	-168.5	307.7	288.1	19.54	15.745		
3,600.0	3,570.3	3,584.9	3,556.7	10.9	10.3	122.25	296.9	-177.8	320.9	300.6	20.26	15.840		
3,700.0	3,669.0	3,684.0	3,654.3	11.3	10.7	121.77	311.0	-187.2	334.1	313.2	20.97	15.930		
3,800.0	3,767.7	3,783.0	3,751.9	11.6	11.0	121.32	325.0	-196.5	347.4	325.7	21.69	16.014		
3,900.0	3,866.4	3,882.1	3,849.6	12.0	11.4	120.90	339.0	-205.9	360.7	338.3	22.41	16.094		
4,000.0	3,965.1	3,981.2	3,947.2	12.4	11.8	120.52	353.1	-215.2	374.0	350.8	23.13	16.168		
4,100.0	4,063.8	4,080.3	4,044.8	12.8	12.2	120.15	367.1	-224.6	387.3	363.4	23.85	16.239		
4,200.0	4,162.5	4,179.4	4,142.5	13.1	12.5	119.82	381.2	-233.9	400.6	376.0	24.57	16.305		
4,300.0	4,261.2	4,278.4	4,240.1	13.5	12.9	119.50	395.2	-243.3	414.0	388.7	25.29	16.368		
4,400.0	4,359.9	4,377.5	4,337.8	13.9	13.3	119.21	409.2	-252.7	427.3	401.3	26.01	16.428		
4,500.0	4,458.6	4,476.6	4,435.4	14.3	13.7	118.93	423.3	-262.0	440.7	413.9	26.73	16.485		
4,600.0	4,557.3	4,575.7	4,533.0	14.6	14.1	118.67	437.3	-271.4	454.1	426.6	27.45	16.538		
4,700.0	4,656.0	4,674.8	4,630.7	15.0	14.4	118.43	451.3	-280.7	467.4	439.3	28.18	16.589		
4,800.0	4,754.6	4,773.8	4,728.3	15.4	14.8	118.19	465.4	-290.1	480.8	451.9	28.90	16.638		
4,900.0	4,853.3	4,872.9	4,825.9	15.8	15.2	117.97	479.4	-299.4	494.2	464.6	29.62	16.684		
5,000.0	4,952.0	4,972.0	4,923.6	16.2	15.6	117.77	493.4	-308.8	507.6	477.3	30.34	16.729		
5,100.0	5,050.7	5,071.1	5,021.2	16.5	16.0	117.57	507.5	-318.1	521.0	490.0	31.07	16.771		
5,200.0	5,149.4	5,170.2	5,118.8	16.9	16.3	117.38	521.5	-327.5	534.5	502.7	31.79	16.811		
5,300.0	5,248.1	5,269.3	5,216.5	17.3	16.7	117.20	535.6	-336.8	547.9	515.4	32.52	16.850		
5,400.0	5,346.8	5,368.3	5,314.1	17.7	17.1	117.03	549.6	-346.2	561.3	528.1	33.24	16.887		
5,500.0	5,445.5	5,467.4	5,411.7	18.1	17.5	116.87	563.6	-355.6	574.7	540.8	33.96	16.923		
5,600.0	5,544.2	5,566.5	5,509.4	18.4	17.9	116.72	577.7	-364.9	588.2	553.5	34.69	16.957		
5,700.0	5,642.9	5,665.6	5,607.0	18.8	18.2	116.57	591.7	-374.3	601.6	566.2	35.41	16.989		
5,800.0	5,741.6	5,764.7	5,704.6	19.2	18.6	116.43	605.7	-383.6	615.1	578.9	36.14	17.021		
5,900.0	5,840.3	5,863.7	5,802.3	19.6	19.0	116.29	619.8	-393.0	628.5	591.6	36.86	17.051		
6,000.0	5,939.0	5,962.8	5,899.9	20.0	19.4	116.16	633.8	-402.3	642.0	604.4	37.59	17.080		
6,100.0	6,037.7	6,061.9	5,997.5	20.3	19.8	116.04	647.9	-411.7	655.4	617.1	38.31	17.108		
6,200.0	6,136.4	6,161.0	6,095.2	20.7	20.2	115.92	661.9	-421.0	668.9	629.8	39.03	17.135		
6,300.0	6,235.1	6,260.1	6,192.8	21.1	20.5	115.81	675.9	-430.4	682.3	642.6	39.76	17.161		
6,400.0	6,333.8	6,359.1	6,290.4	21.5	20.9	115.70	690.0	-439.7	695.8	655.3	40.49	17.186		
6,500.0	6,432.5	6,458.2	6,388.1	21.9	21.3	115.59	704.0	-449.1	709.3	668.0	41.21	17.210		
6,600.0	6,531.2	6,557.3	6,485.7	22.2	21.7	115.49	718.0	-458.5	722.7	680.8	41.94	17.234		
6,700.0	6,629.9	6,656.4	6,583.4	22.6	22.1	115.39	732.1	-467.8	736.2	693.5	42.66	17.256		
6,800.0	6,728.6	6,755.5	6,681.0	23.0	22.5	115.30	746.1	-477.2	749.7	706.3	43.39	17.278		
6,900.0	6,827.3	6,854.6	6,778.6	23.4	22.8	115.20	760.1	-486.5	763.1	719.0	44.11	17.299		
7,000.0	6,926.0	6,953.6	6,876.3	23.8	23.2	115.12	774.2	-495.9	776.6	731.8	44.84	17.320		
7,100.0	7,024.7	7,052.7	6,973.9	24.1	23.6	115.03	788.2	-505.2	790.1	744.5	45.56	17.340		
7,200.0	7,123.4	7,151.8	7,071.5	24.5	24.0	114.95	802.3	-514.6	803.6	757.3	46.29	17.359		
7,300.0	7,222.1	7,250.9	7,169.2	24.9	24.4	114.87	816.3	-523.9	817.0	770.0	47.02	17.378		

CC - Min centre to center distance or convergent point, SF - min separation factor, ES - min ellipse separation

Company:	Synergy Resources	Local Co-ordinate Reference:	Well SRC Avex 10ND
Project:	SEC.10-T4N-R68W	TVD Reference:	WELL @ 5050.0ft (Original Well Elev)
Reference Site:	SRC Avex 42-10D Pad Sec.10-T4N-R68W	MD Reference:	WELL @ 5050.0ft (Original Well Elev)
Site Error:	0.0ft	North Reference:	True
Reference Well:	SRC Avex 10ND	Survey Calculation Method:	Minimum Curvature
Well Error:	0.0ft	Output errors are at	2.00 sigma
Reference Wellbore	Wellbore #1	Database:	Landmark
Reference Design:	Plan #1 (9-17-12)	Offset TVD Reference:	Offset Datum

Offset Design SRC Avex 42-10D Pad Sec.10-T4N-R68W - SRC Avex 31-10D - Wellbore #1 - Plan #1 (7-12-11)												Offset Site Error:	0.0 ft
Survey Program: 0-MWD												Offset Well Error:	0.0 ft
Reference		Offset		Semi Major Axis			Distance						
Measured Depth (ft)	Vertical Depth (ft)	Measured Depth (ft)	Vertical Depth (ft)	Reference (ft)	Offset (ft)	Highside Toolface (°)	Offset Wellbore Centre +N/-S (ft)	+E/-W (ft)	Between Centres (ft)	Between Ellipses (ft)	Minimum Separation (ft)	Separation Factor	Warning
7,400.0	7,320.8	7,350.0	7,266.8	25.3	24.8	114.79	830.3	-533.3	830.5	782.8	47.74	17.396	
7,500.0	7,419.5	7,449.0	7,364.4	25.7	25.1	114.72	844.4	-542.6	844.0	795.5	48.47	17.413	
7,600.0	7,518.2	7,548.1	7,462.1	26.0	25.5	114.65	858.4	-552.0	857.5	808.3	49.20	17.430	
7,700.0	7,616.9	7,647.2	7,559.7	26.4	25.9	114.58	872.4	-561.4	871.0	821.0	49.92	17.447	
7,800.0	7,715.6	7,746.3	7,657.3	26.8	26.3	114.51	886.5	-570.7	884.5	833.8	50.65	17.463	
7,900.0	7,814.3	7,845.4	7,755.0	27.2	26.7	114.44	900.5	-580.1	897.9	846.6	51.37	17.478	
7,912.9	7,827.0	7,858.1	7,767.5	27.2	26.7	114.43	902.3	-581.3	899.7	848.2	51.47	17.480	

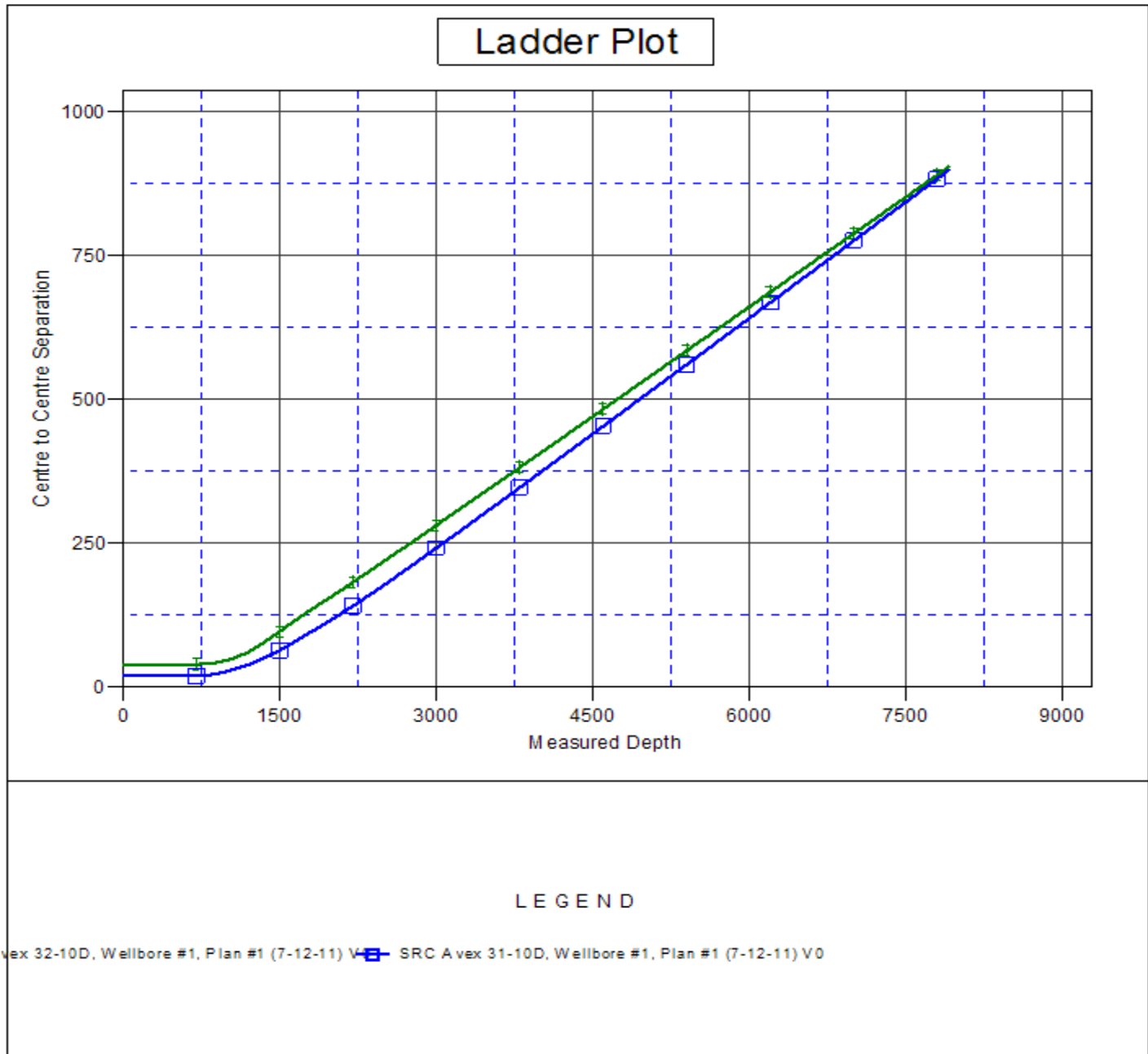
SRC Avex 42-10D Pad Sec.10-T4N-R68W - SRC Avex 32-10D - Wellbore #1 - Plan #1 (7-12-11)													Offset Site Error:	0.0 ft
Survey Program: 0-MWD													Offset Well Error:	0.0 ft
Reference		Offset		Semi Major Axis			Distance							
Measured Depth	Vertical Depth	Measured Depth	Vertical Depth	Reference	Offset	Highside Toolface	Offset Wellbore Centre		Between Centres	Between Ellipses	Minimum Separation	Separation Factor	Warning	
(ft)	(ft)	(ft)	(ft)	(ft)	(ft)	(°)	+N/-S (ft)	+E/-W (ft)	(ft)	(ft)	(ft)			
0.0	0.0	1.0	1.0	0.0	0.0	89.99	0.0	40.1	40.1	40.1	0.00	N/A		
100.0	100.0	101.0	101.0	0.1	0.1	89.99	0.0	40.1	40.1	39.9	0.23	176.852		
200.0	200.0	201.0	201.0	0.3	0.3	89.99	0.0	40.1	40.1	39.5	0.68	59.342		
300.0	300.0	301.0	301.0	0.6	0.6	89.99	0.0	40.1	40.1	39.0	1.13	35.653		
400.0	400.0	401.0	401.0	0.8	0.8	89.99	0.0	40.1	40.1	38.6	1.58	25.481		
500.0	500.0	501.0	501.0	1.0	1.0	89.99	0.0	40.1	40.1	38.1	2.03	19.825		
600.0	600.0	601.0	601.0	1.2	1.2	89.99	0.0	40.1	40.1	37.7	2.47	16.224		
700.0	700.0	701.0	701.0	1.5	1.5	89.99	0.0	40.1	40.1	37.2	2.92	13.729	CC, ES	
800.0	800.0	801.0	801.0	1.7	1.7	172.08	0.0	40.1	41.0	37.7	3.36	12.200		
900.0	900.0	901.1	901.1	1.9	1.9	173.71	-0.9	40.0	43.5	39.7	3.76	11.552		
1,000.0	999.9	1,001.0	1,001.0	2.1	2.1	177.43	-3.5	39.5	47.5	43.4	4.15	11.457	SF	
1,100.0	1,099.7	1,100.8	1,100.7	2.3	2.3	-177.60	-7.8	38.8	53.5	48.9	4.55	11.760		
1,200.0	1,199.4	1,200.3	1,199.9	2.6	2.4	-172.22	-13.8	37.7	61.6	56.7	4.96	12.421		
1,300.0	1,298.9	1,299.3	1,298.7	2.8	2.7	-167.04	-21.4	36.4	72.2	66.8	5.40	13.387		
1,400.0	1,398.3	1,399.6	1,398.6	3.1	2.9	-162.64	-30.1	34.0	84.4	78.5	5.85	14.421		
1,500.0	1,497.4	1,500.1	1,498.6	3.4	3.1	-159.17	-38.8	29.8	97.0	90.7	6.33	15.334		
1,600.0	1,596.3	1,600.6	1,598.6	3.7	3.4	-156.34	-47.6	23.9	110.0	103.2	6.82	16.129		
1,625.6	1,621.6	1,626.4	1,624.1	3.7	3.5	-155.69	-49.9	22.1	113.4	106.5	6.95	16.311		
1,700.0	1,695.0	1,701.4	1,698.6	4.0	3.7	-153.90	-56.5	16.3	123.0	115.6	7.35	16.733		
1,800.0	1,793.7	1,801.8	1,798.2	4.3	3.9	-151.53	-65.5	6.9	134.8	126.9	7.90	17.061		
1,900.0	1,892.4	1,900.9	1,896.5	4.7	4.2	-149.45	-74.3	-2.7	146.6	138.1	8.47	17.304		
2,000.0	1,991.1	2,000.1	1,994.8	5.0	4.5	-147.68	-83.2	-12.4	158.5	149.4	9.05	17.505		
2,100.0	2,089.8	2,099.3	2,093.1	5.4	4.8	-146.17	-92.0	-22.0	170.5	160.8	9.65	17.674		
2,200.0	2,188.5	2,198.5	2,191.4	5.7	5.1	-144.85	-100.9	-31.7	182.6	172.3	10.25	17.815		
2,300.0	2,287.2	2,297.7	2,289.7	6.1	5.4	-143.69	-109.8	-41.3	194.8	183.9	10.86	17.933		
2,400.0	2,385.9	2,396.8	2,388.0	6.4	5.7	-142.68	-118.6	-51.0	207.1	195.6	11.48	18.034		
2,500.0	2,484.6	2,496.0	2,486.3	6.8	6.1	-141.77	-127.5	-60.6	219.4	207.3	12.11	18.120		
2,600.0	2,583.3	2,595.2	2,584.7	7.2	6.4	-140.96	-136.3	-70.3	231.8	219.0	12.74	18.194		
2,700.0	2,682.0	2,694.4	2,683.0	7.5	6.7	-140.24	-145.2	-79.9	244.2	230.8	13.38	18.258		
2,800.0	2,780.7	2,793.6	2,781.3	7.9	7.0	-139.58	-154.0	-89.5	256.7	242.6	14.01	18.313		
2,900.0	2,879.4	2,892.7	2,879.6	8.3	7.3	-138.99	-162.9	-99.2	269.1	254.5	14.66	18.361		
3,000.0	2,978.1	2,991.9	2,977.9	8.6	7.7	-138.45	-171.8	-108.8	281.6	266.3	15.30	18.404		
3,100.0	3,076.8	3,091.1	3,076.2	9.0	8.0	-137.95	-180.6	-118.5	294.2	278.2	15.95	18.441		
3,200.0	3,175.5	3,190.3	3,174.5	9.4	8.3	-137.49	-189.5	-128.1	306.7	290.1	16.60	18.474		
3,300.0	3,274.2	3,289.5	3,272.8	9.8	8.6	-137.08	-198.3	-137.8	319.3	302.0	17.26	18.504		
3,400.0	3,372.9	3,388.6	3,371.2	10.1	9.0	-136.69	-207.2	-147.4	331.9	314.0	17.91	18.530		
3,500.0	3,471.6	3,487.8	3,469.5	10.5	9.3	-136.33	-216.0	-157.1	344.5	325.9	18.57	18.554		
3,600.0	3,570.3	3,587.0	3,567.8	10.9	9.6	-135.99	-224.9	-166.7	357.1	337.9	19.22	18.576		
3,700.0	3,669.0	3,686.2	3,666.1	11.3	10.0	-135.68	-233.8	-176.4	369.7	349.8	19.88	18.595		
3,800.0	3,767.7	3,785.4	3,764.4	11.6	10.3	-135.39	-242.6	-186.0	382.4	361.8	20.54	18.612		
3,900.0	3,866.4	3,884.6	3,862.7	12.0	10.6	-135.12	-251.5	-195.7	395.0	373.8	21.20	18.628		
4,000.0	3,965.1	3,983.7	3,961.0	12.4	10.9	-134.86	-260.3	-205.3	407.6	385.8	21.87	18.643		
4,100.0	4,063.8	4,082.9	4,059.3	12.8	11.3	-134.62	-269.2	-215.0	420.3	397.8	22.53	18.656		
4,200.0	4,162.5	4,182.1	4,157.7	13.1	11.6	-134.40	-278.0	-224.6	433.0	409.8	23.19	18.668		
4,300.0	4,261.2	4,281.3	4,256.0	13.5	11.9	-134.19	-286.9	-234.3	445.6	421.8	23.86	18.679		
4,400.0	4,359.9	4,380.5	4,354.3	13.9	12.3	-133.98	-295.7	-243.9	458.3	433.8	24.52	18.690		
4,500.0	4,458.6	4,479.6	4,452.6	14.3	12.6	-133.79	-304.6	-253.5	471.0	445.8	25.19	18.699		
4,600.0	4,557.3	4,578.8	4,550.9	14.6	12.9	-133.61	-313.5	-263.2	483.7	457.8	25.85	18.708		
4,700.0	4,656.0	4,678.0	4,649.2	15.0	13.3	-133.44	-322.3	-272.8	496.4	469.9	26.52	18.716		
4,800.0	4,754.6	4,777.2	4,747.5	15.4	13.6	-133.28	-331.2	-282.5	509.1	481.9	27.19	18.724		
4,900.0	4,853.3	4,876.4	4,845.8	15.8	13.9	-133.13	-340.0	-292.1	521.8	493.9	27.86	18.731		
5,000.0	4,952.0	4,975.5	4,944.2	16.2	14.3	-132.98	-348.9	-301.8	534.5	505.9	28.52	18.737		

COMPASS 2003.21 Build 46

Offset Design SRC Avex 42-10D Pad Sec.10-T4N-R68W - SRC Avex 32-10D - Wellbore #1 - Plan #1 (7-12-11)													Offset Site Error: 0.0 ft	
Survey Program: 0-MWD													Offset Well Error: 0.0 ft	
Reference		Offset		Semi Major Axis			Distance							Warning
Measured Depth	Vertical Depth	Measured Depth	Vertical Depth	Reference	Offset	Highside Toolface	Offset Wellbore Centre		Between Centres	Between Ellipses	Minimum Separation	Separation Factor		
(ft)	(ft)	(ft)	(ft)	(ft)	(ft)	(°)	+N/-S (ft)	+E/-W (ft)	(ft)	(ft)	(ft)			
5,100.0	5,050.7	5,074.7	5,042.5	16.5	14.6	-132.84	-357.7	-311.4	547.2	518.0	29.19	18.743		
5,200.0	5,149.4	5,173.9	5,140.8	16.9	15.0	-132.70	-366.6	-321.1	559.9	530.0	29.86	18.749		
5,300.0	5,248.1	5,273.1	5,239.1	17.3	15.3	-132.58	-375.5	-330.7	572.6	542.1	30.53	18.754		
5,400.0	5,346.8	5,372.3	5,337.4	17.7	15.6	-132.45	-384.3	-340.4	585.3	554.1	31.20	18.759		
5,500.0	5,445.5	5,471.4	5,435.7	18.1	16.0	-132.34	-393.2	-350.0	598.0	566.2	31.87	18.764		
5,600.0	5,544.2	5,570.6	5,534.0	18.4	16.3	-132.22	-402.0	-359.7	610.7	578.2	32.54	18.768		
5,700.0	5,642.9	5,669.8	5,632.3	18.8	16.6	-132.11	-410.9	-369.3	623.5	590.3	33.21	18.773		
5,800.0	5,741.6	5,769.0	5,730.7	19.2	17.0	-132.01	-419.7	-379.0	636.2	602.3	33.88	18.777		
5,900.0	5,840.3	5,868.2	5,829.0	19.6	17.3	-131.91	-428.6	-388.6	648.9	614.4	34.55	18.780		
6,000.0	5,939.0	5,967.3	5,927.3	20.0	17.6	-131.82	-437.5	-398.3	661.6	626.4	35.22	18.784		
6,100.0	6,037.7	6,066.5	6,025.6	20.3	18.0	-131.72	-446.3	-407.9	674.4	638.5	35.90	18.787		
6,200.0	6,136.4	6,165.7	6,123.9	20.7	18.3	-131.63	-455.2	-417.5	687.1	650.5	36.57	18.790		
6,300.0	6,235.1	6,264.9	6,222.2	21.1	18.7	-131.55	-464.0	-427.2	699.8	662.6	37.24	18.793		
6,400.0	6,333.8	6,364.1	6,320.5	21.5	19.0	-131.47	-472.9	-436.8	712.6	674.7	37.91	18.796		
6,500.0	6,432.5	6,463.3	6,418.8	21.9	19.3	-131.39	-481.7	-446.5	725.3	686.7	38.58	18.798		
6,600.0	6,531.2	6,562.4	6,517.2	22.2	19.7	-131.31	-490.6	-456.1	738.0	698.8	39.26	18.801		
6,700.0	6,629.9	6,661.6	6,615.5	22.6	20.0	-131.24	-499.5	-465.8	750.8	710.9	39.93	18.803		
6,800.0	6,728.6	6,760.8	6,713.8	23.0	20.3	-131.16	-508.3	-475.4	763.5	722.9	40.60	18.805		
6,900.0	6,827.3	6,860.0	6,812.1	23.4	20.7	-131.10	-517.2	-485.1	776.3	735.0	41.27	18.808		
7,000.0	6,926.0	6,959.2	6,910.4	23.8	21.0	-131.03	-526.0	-494.7	789.0	747.1	41.95	18.810		
7,100.0	7,024.7	7,058.3	7,008.7	24.1	21.4	-130.96	-534.9	-504.4	801.7	759.1	42.62	18.811		
7,200.0	7,123.4	7,157.5	7,107.0	24.5	21.7	-130.90	-543.7	-514.0	814.5	771.2	43.29	18.813		
7,300.0	7,222.1	7,256.7	7,205.3	24.9	22.0	-130.84	-552.6	-523.7	827.2	783.3	43.97	18.815		
7,400.0	7,320.8	7,355.9	7,303.7	25.3	22.4	-130.78	-561.4	-533.3	840.0	795.3	44.64	18.817		
7,500.0	7,419.5	7,455.1	7,402.0	25.7	22.7	-130.72	-570.3	-543.0	852.7	807.4	45.31	18.818		
7,600.0	7,518.2	7,554.2	7,500.3	26.0	23.0	-130.67	-579.2	-552.6	865.5	819.5	45.99	18.820		
7,700.0	7,616.9	7,653.4	7,598.6	26.4	23.4	-130.61	-588.0	-562.3	878.2	831.6	46.66	18.821		
7,800.0	7,715.6	7,752.6	7,696.9	26.8	23.7	-130.56	-596.9	-571.9	891.0	843.6	47.33	18.823		
7,900.0	7,814.3	7,851.8	7,795.2	27.2	24.1	-130.51	-605.7	-581.5	903.7	855.7	48.01	18.824		
7,912.9	7,827.0	7,864.6	7,807.9	27.2	24.1	-130.50	-606.9	-582.8	905.4	857.3	48.10	18.824		

Company:	Synergy Resources	Local Co-ordinate Reference:	Well SRC Avex 10ND
Project:	SEC.10-T4N-R68W	TVD Reference:	WELL @ 5050.0ft (Original Well Elev)
Reference Site:	SRC Avex 42-10D Pad Sec.10-T4N-R68W	MD Reference:	WELL @ 5050.0ft (Original Well Elev)
Site Error:	0.0ft	North Reference:	True
Reference Well:	SRC Avex 10ND	Survey Calculation Method:	Minimum Curvature
Well Error:	0.0ft	Output errors are at	2.00 sigma
Reference Wellbore	Wellbore #1	Database:	Landmark
Reference Design:	Plan #1 (9-17-12)	Offset TVD Reference:	Offset Datum

Reference Depths are relative to WELL @ 5050.0ft (Original Well Elev) Coordinates are relative to: SRC Avex 10ND
 Offset Depths are relative to Offset Datum Coordinate System is US State Plane 1983, Colorado Northern Zone
 Central Meridian is -105.500000 ° Grid Convergence at Surface is: 0.33°



Company:	Synergy Resources	Local Co-ordinate Reference:	Well SRC Avex 10ND
Project:	SEC.10-T4N-R68W	TVD Reference:	WELL @ 5050.0ft (Original Well Elev)
Reference Site:	SRC Avex 42-10D Pad Sec.10-T4N-R68W	MD Reference:	WELL @ 5050.0ft (Original Well Elev)
Site Error:	0.0ft	North Reference:	True
Reference Well:	SRC Avex 10ND	Survey Calculation Method:	Minimum Curvature
Well Error:	0.0ft	Output errors are at	2.00 sigma
Reference Wellbore	Wellbore #1	Database:	Landmark
Reference Design:	Plan #1 (9-17-12)	Offset TVD Reference:	Offset Datum

Reference Depths are relative to WELL @ 5050.0ft (Original Well Elev) Coordinates are relative to: SRC Avex 10ND
Offset Depths are relative to Offset Datum Coordinate System is US State Plane 1983, Colorado Northern Zone
Central Meridian is -105.500000 ° Grid Convergence at Surface is: 0.33°

