

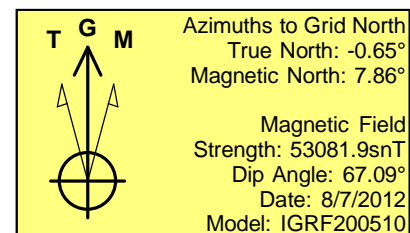
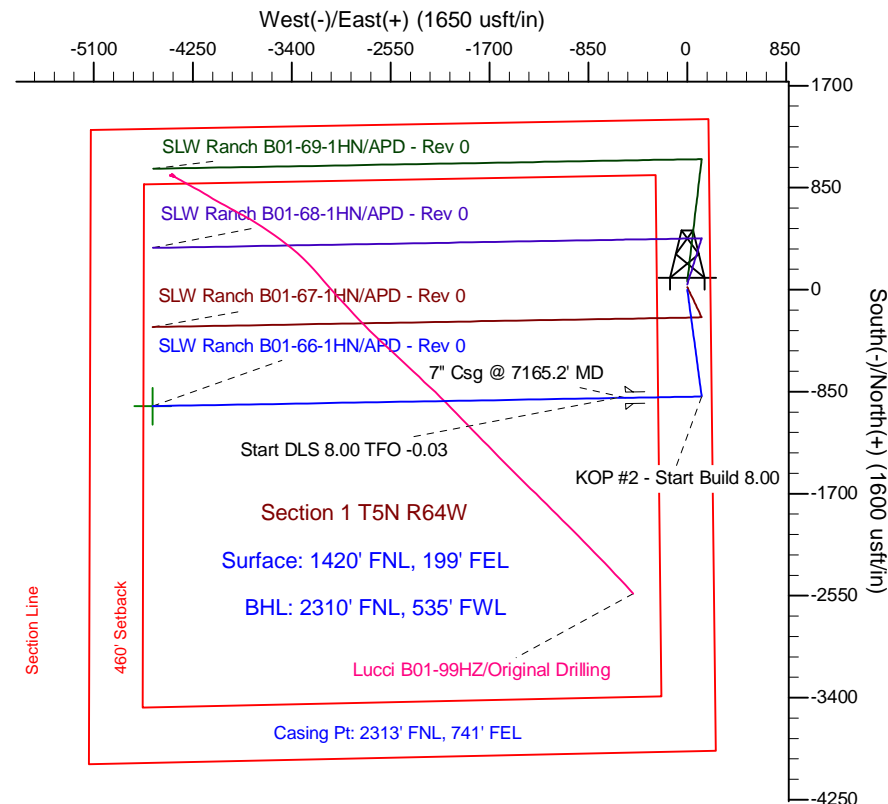
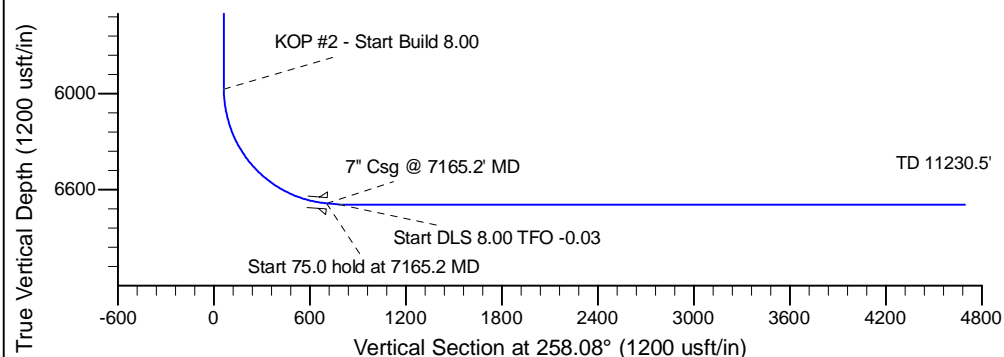
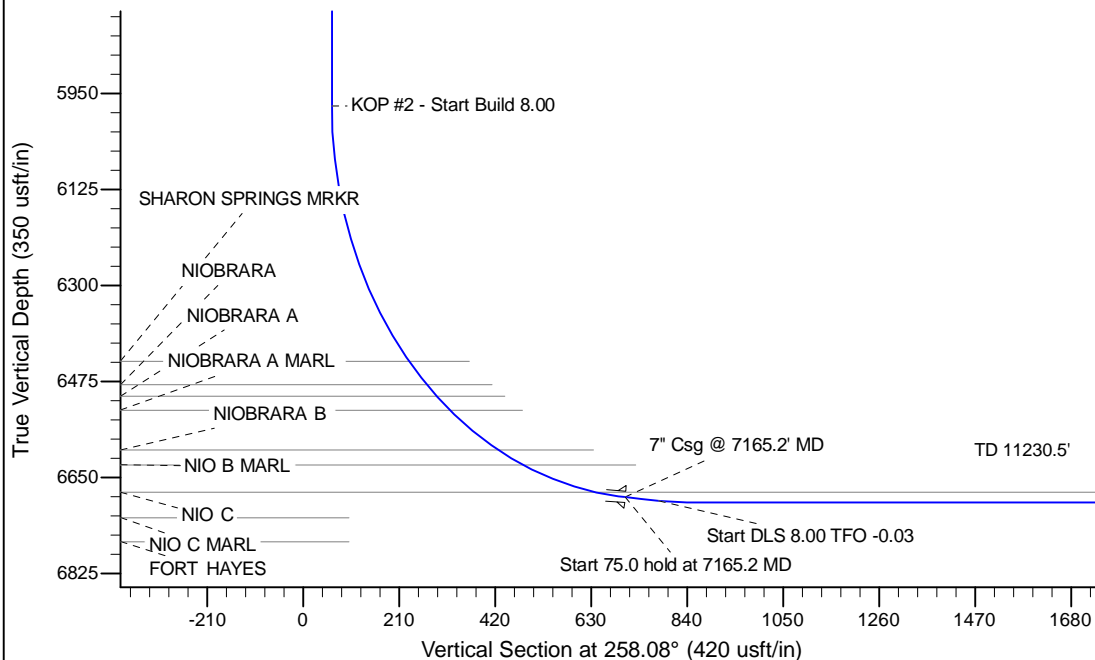
Project: Wattenberg Field  
Site: B (SEC.1-T05N-R64W) Weld County, CO  
Well: SLW Ranch B01-66-1HN  
Wellbore: Original Drilling  
Design: APD - Rev 0

# Northern Region Drilling

Geodetic System: US State Plane 1983  
Datum: North American Datum 1983  
Ellipsoid: GRS 1980  
Zone: Colorado Northern Zone  
System Datum: Mean Sea Level

## SECTION DETAILS

Sec	MD	Inc	Azi	TVD	+N/-S	+E/-W	Dleg	TFace	VSect	Target
1	0.0	0.00	0.00	0.0	0.0	0.0	0.00	0.00	0.0	
2	1200.0	0.00	0.00	1200.0	0.0	0.0	0.00	0.00	0.0	
3	1920.5	18.01	172.07	1908.7	-111.3	15.5	2.50	172.07	7.8	
4	4099.9	18.01	172.07	3981.3	-778.7	108.5	0.00	0.00	54.7	
5	4820.4	0.00	0.00	4690.0	-890.0	124.0	2.50	180.00	62.5	
6	6102.7	0.00	0.00	5972.3	-890.0	124.0	0.00	0.00	62.5	
7	7165.2	85.00	269.03	6685.7	-901.1	-529.7	8.00	269.03	704.4	
8	7240.2	85.00	269.03	6692.3	-902.3	-604.4	0.00	0.00	777.8	
9	7302.7	90.00	269.03	6695.0	-903.4	-666.8	8.00	-0.03	839.1	
10	11230.5	90.00	269.03	6695.0	-970.0	-4594.0	0.00	0.00	4695.3	SLW Ranch B01-66-1HN BHL 2310'FNL, 535'FWL



WELL DETAILS: SLW Ranch B01-66-1HN			
Ground Level:	4612.0	Latitude	40.431850
Northing	1401766.19	Eastng	3281307.54
Longitude	-104.489460		
Plan: APD - Rev 0 (SLW Ranch B01-66-1HN/Original Drilling)			
Created By:	Carrie Willers	Date:	16:31, August 28 2012
Checked:		Date:	
Reviewed:		Date:	
Approved:		Date:	