
WPX ENERGY ROCKY MOUNTAIN LLC-EBUS

**PA 414-29
Parachute
Garfield County , Colorado**

Squeeze Perfs
25-Jul-2012

Post Job Summary

The Road to Excellence Starts with Safety

Sold To #: 300721		Ship To #: 2907916		Quote #:		Sales Order #: 9692728	
Customer: WPX ENERGY ROCKY MOUNTAIN LLC-EBUS				Customer Rep: Roweland, Mike			
Well Name: PA			Well #: 414-29			API/UWI #: 05-045-19518	
Field: Parachute		City (SAP): PARACHUTE		County/Parish: Garfield		State: Colorado	
Lat: N 39.49 deg. OR N 39 deg. 29 min. 23.575 secs.				Long: W 108.023 deg. OR W -109 deg. 58 min. 36.797 secs.			
Contractor: WORKOVER			Rig/Platform Name/Num: WORKOVER				
Job Purpose: Squeeze Perfs							
Well Type: Development Well			Job Type: Squeeze Perfs				
Sales Person: MAYO, MARK			Srvc Supervisor: STILLSON, ERIC			MBU ID Emp #: 393789	

Job Personnel

HES Emp Name	Exp Hrs	Emp #	HES Emp Name	Exp Hrs	Emp #	HES Emp Name	Exp Hrs	Emp #
LINN, PAUL Andrew	4	479143	MILLER, KEVIN Paul	4	443040	NYE, KEVEN R	4	460558
PARKER, BRANDON	4	503646	STILLSON, ERIC W	4	393789	WEAVER, CARLTON Russell	4	457698
WOLFE, JON P	4	485217						

Equipment

HES Unit #	Distance-1 way	HES Unit #	Distance-1 way	HES Unit #	Distance-1 way	HES Unit #	Distance-1 way
10011429	60 mile	10616651C	60 mile	11583915	60 mile	11583932	60 mile
11808827	60 mile						

Job Hours

Date	On Location Hours	Operating Hours	Date	On Location Hours	Operating Hours	Date	On Location Hours	Operating Hours
07-25-12	5	2						
TOTAL			Total is the sum of each column separately					

Job

Formation Name	Formation Depth (MD)	Top	Bottom	Form Type	Job depth MD	Water Depth	Perforation Depth (MD)	From	To
				BHST	2339. ft				

Job Times

Date	Time	Time Zone
25 - Jul - 2012	11:30	MST
25 - Jul - 2012	12:45	MST
25 - Jul - 2012	00:00	MST
25 - Jul - 2012	00:00	MST
25 - Jul - 2012	00:00	MST

Well Data

Description	New / Used	Max pressure psig	Size in	ID in	Weight lbm/ft	Thread	Grade	Top MD ft	Bottom MD ft	Top TVD ft	Bottom TVD ft
-------------	------------	-------------------	---------	-------	---------------	--------	-------	-----------	--------------	------------	---------------

Sales/Rental/3rd Party (HES)

Description	Qty	Qty uom	Depth	Supplier
ADC (AUTO DENSITY CTRL) SYS, /JOB,ZI	1	JOB		
PORT. DATA ACQUIS. W/OPTICEM RT W/HES	1	EA		
R/A DENSOMETER W/CHART RECORDER,/JOB,ZI	1	JOB		

Tools and Accessories

Type	Size	Qty	Make	Depth	Type	Size	Qty	Make	Depth	Type	Size	Qty	Make
Guide Shoe					Packer					Top Plug			
Float Shoe					Bridge Plug					Bottom Plug			
Float Collar					Retainer					SSR plug set			
Insert Float										Plug Container			
Stage Tool										Centralizers			

Miscellaneous Materials

Gelling Agt	Conc	Surfactant	Conc	Acid Type	Qty	Conc	%
Treatment Fld	Conc	Inhibitor	Conc	Sand Type	Size	Qty	

Fluid Data									
Stage/Plug #: 1									
Fluid #	Stage Type	Fluid Name	Qty	Qty uom	Mixing Density lbm/gal	Yield ft ³ /sk	Mix Fluid Gal/sk	Rate bbl/min	Total Mix Fluid Gal/sk
1	Injection Test		5.00	bbl	8.33	.0	.0	2	
2	SqueezeCem Tail Cement	SQUEEZECM (TM) SYSTEM (452971)	25.0	sacks	12.8	.84	4.32	1	4.32
	4.32 Gal	FRESH WATER							
3	Displacement		8.00	bbl	8.33	.0	.0	1	
Calculated Values		Pressures		Volumes					
Displacement	8	Shut In: Instant		Lost Returns	0	Cement Slurry	3.7	Pad	
Top Of Cement	2100	5 Min		Cement Returns	.25	Actual Displacement	8	Treatment	
Frac Gradient		15 Min		Spacers	5	Load and Breakdown		Total Job	
Rates									
Circulating		Mixing	1	Displacement	1	Avg. Job		1	
Cement Left In Pipe	Amount	239	Reason	PLUG					
Frac Ring # 1 @	ID		Frac ring # 2 @	ID		Frac Ring # 3 @	ID		Frac Ring # 4 @
The Information Stated Herein Is Correct				Customer Representative Signature					

The Road to Excellence Starts with Safety

Sold To #: 300721	Ship To #: 2907916	Quote #:	Sales Order #: 9692728
Customer: WPX ENERGY ROCKY MOUNTAIN LLC-EBUS	Customer Rep: Roweland, Mike		
Well Name: PA	Well #: 414-29	API/UWI #: 05-045-19518	
Field: Parachute	City (SAP): PARACHUTE	County/Parish: Garfield	State: Colorado
Legal Description:			
Lat: N 39.49 deg. OR N 39 deg. 29 min. 23.575 secs.		Long: W 108.023 deg. OR W -109 deg. 58 min. 36.797 secs.	
Contractor: WORKOVER		Rig/Platform Name/Num: WORKOVER	
Job Purpose: Squeeze Perfs			Ticket Amount:
Well Type: Development Well		Job Type: Squeeze Perfs	
Sales Person: MAYO, MARK		Srvc Supervisor: STILLSON, ERIC	MBU ID Emp #: 393789

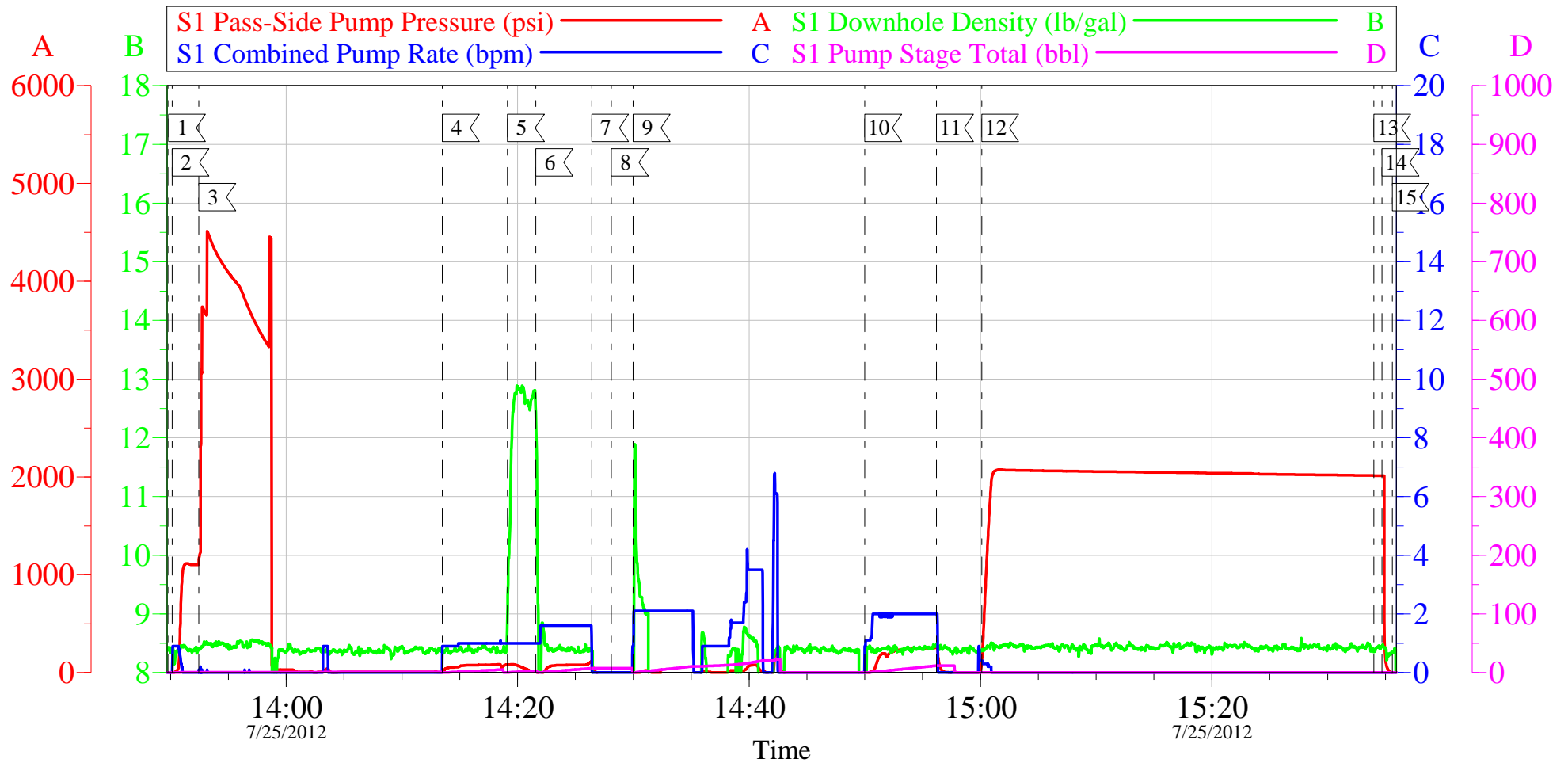
Activity Description	Date/Time	Cht #	Rate bbl/min	Volume bbl		Pressure psig		Comments
				Stage	Total	Tubing	Casing	
Call Out	07/25/2012 11:30							ROLLED OVER FROM WPX KP SQUEEZE
Pre-Convoy Safety Meeting	07/25/2012 11:35							ENTIRE CREW, OBSERVE ALL SAFE DRIVING PROCEDURES.
Arrive At Loc	07/25/2012 12:45							
Assessment Of Location Safety Meeting	07/25/2012 12:50							REVIEWED EMERGENCY PLAN, ASSESSED WORK AREA AND SPOTTED EQUIPMENT.
Pre-Rig Up Safety Meeting	07/25/2012 12:55							ENTIRE CREW, WALKED THROUGH RIG UP LOOKING FOR HAZARDS.
Rig-Up Equipment	07/25/2012 13:00							1 PICK UP, 1 HT400 PUMP TRUCK, 1 BODY LOAD CEMENT TRUCK, 1 SQUEEZE MANIFOLD.
Pre-Job Safety Meeting	07/25/2012 13:40							ENTIRE CREW, CO REP AND RIG CREW.
Start Job	07/25/2012 13:49							CASING LEAK AT 2300', 2 3/8 4.7# TUBING SET AT 2339', BRIDGE PLUG AT 2340. WF IS PRODUCTION WATER 8.5 PPG. 50 SKS BROUGHT TO LOCATION, USED ONLY 25 SKS. REST BROUGHT BACK AND BLEW TO WASTE.

Activity Description	Date/Time	Cht #	Rate bbl/min	Volume bbl		Pressure psig		Comments
				Stage	Total	Tubing	Casing	
Pump Water	07/25/2012 13:49		0.5	0.5			800.0	FILL LINES TO TUBING AND BACKSIDE BEFORE TESTING
Pressure Test	07/25/2012 13:52		0.5	0.1			4920.0	PRESSURE FELL BACK AT FIRST, BUMPED PRESSURE UP AND HELD, NO LEAKS
Other	07/25/2012 14:02							PREMIXED CEMENT AND WEIGHED WITH SCALES
Pump Spacer	07/25/2012 14:13		1	5			83.0	FRESH WATER
Pump Tail Cement	07/25/2012 14:19		1	3.7			60.0	25 SKS SQUEEZECER, 12.8 PPG, 0.84 CUFT/SK, 4.32 GAL/SK,
Pump Displacement	07/25/2012 14:21		1.5	8			115.0	FRESH WATER, AFTER SWAPPING TO WATER, IT WAS SUCKING AWAY SO WE PICKED UP THE RATE TO 1.5 BPM TO CATCH UP WITH IT.
Shutdown	07/25/2012 14:26							SHUTDOWN, OPENED RELEASE LINE AND WAITED FOR RETURNS TO STOP BEFORE BREAKING OFF LINES.
Move Tubing Up	07/25/2012 14:28							RIG PULLED UP 15 JOINTS OF TUBING, APPROX 600'. HES RECOMMENDED AT LEAST 500 FEET ABOVE CEMENT. ALL PULLED DRY.
Reverse Circ Well	07/25/2012 14:50		2	12			255.0	FRESH WATER, APPROX 1/4 BBL CEMENT WATER TO SURFACE AT 8 BBLS GONE. DID NOT USE ANY SUGAR.
Shutdown	07/25/2012 14:56							
Pressure Up Well	07/25/2012 15:00		0.5	0.4			2070.0	CLOSED IN BACKSIDE AND PRESSURED UP TO 2070 PSI

Activity Description	Date/Time	Cht #	Rate bbl/ min	Volume bbl		Pressure psig		Comments
				Stage	Total	Tubing	Casing	
Shut In Well	07/25/2012 15:34							SHUT IN WITH 2009 PSI, 2 INCH VALVE AND SWAGE LEFT ON LOCATION.
End Job	07/25/2012 15:35							
Post-Job Safety Meeting (Pre Rig-Down)	07/25/2012 15:40							ENTIRE CREW
Rig-Down Equipment	07/25/2012 15:45							
Pre-Convoy Safety Meeting	07/25/2012 16:25							ENTIRE CREW, OBSERVE ALL SAFE DRIVING PROCEDURES
Crew Leave Location	07/25/2012 16:30							THANK YOU FOR USING HALLIBURTON, ERIC STILLSON AND CREW.

WPX - PA 414-29

SQUEEZE 4 1/2" CASING

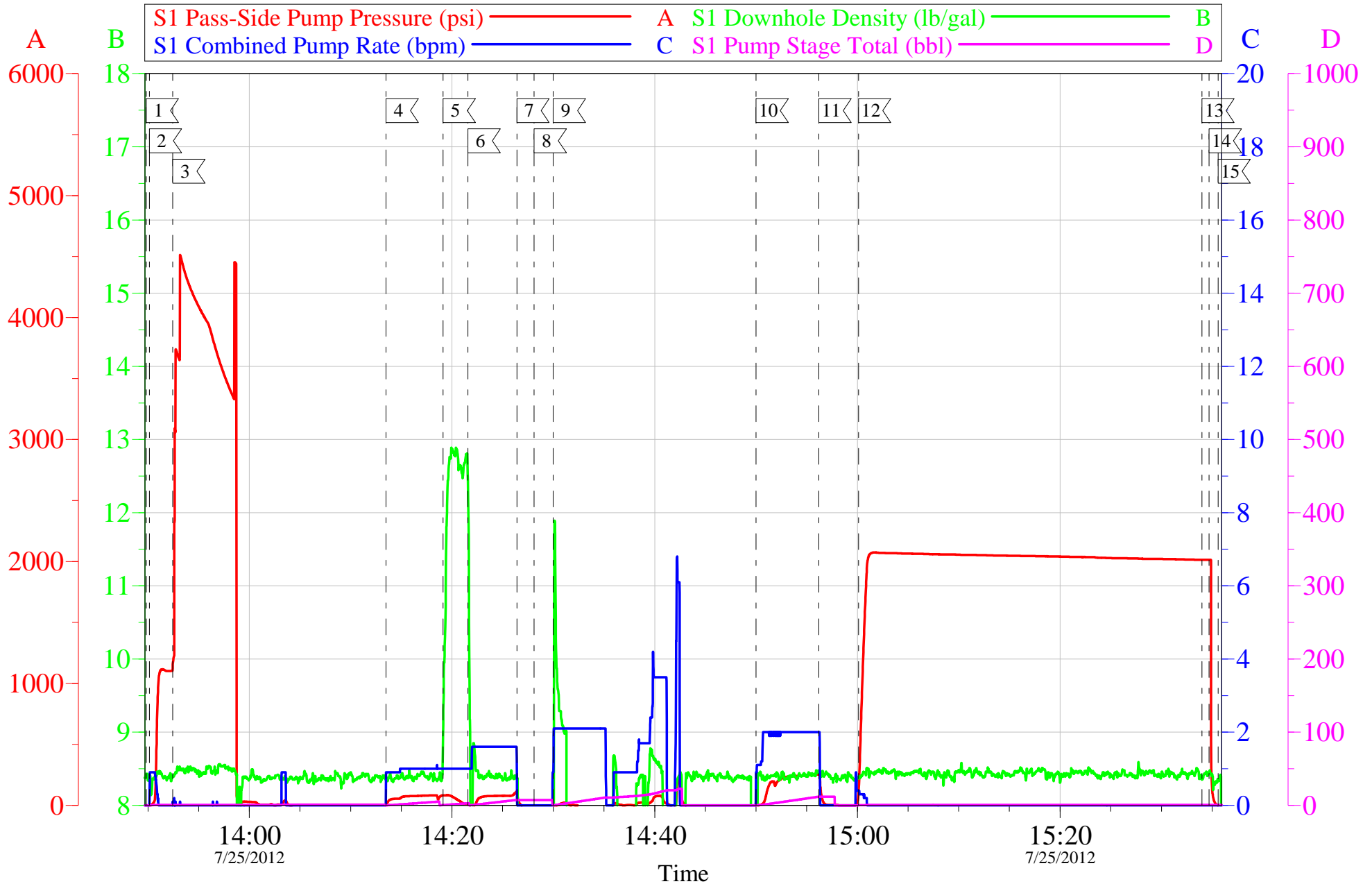


Customer: WPX	Job Date: 25-Jul-2012	Sales Order #: 9692728
Well Description: PA 414-29	Job Type: SQUEEZE	ADC Used: YES
Company Rep: MIKE ROWELAND	Cement Supervisor: ERIC STILLSON	Elite #4: RUSTY WEAVER

OptiCem v6.4.10
25-Jul-12 15:50

WPX - PA 414-29

SQUEEZE 4 1/2" CASING



Customer: WPX	Job Date: 25-Jul-2012	Sales Order #: 9692728
Well Description: PA 414-29	Job Type: SQUEEZE	ADC Used: YES
Company Rep: MIKE ROWELAND	Cement Supervisor: ERIC STILLSON	Elite #4: RUSTY WEAVER

OptiCem v6.4.10
25-Jul-12 15:51

Sales Order #: 9692728	Line Item: 10	Survey Conducted Date: 7/25/2012
Customer: WPX ENERGY ROCKY MOUNTAIN LLC-EBUS		Job Type (BOM): CMT SQUEEZE PERFORATIONS BOM
Customer Representative: MIKE ROWELAND		API / UWI: (leave blank if unknown) 05-045-19518
Well Name: PA		Well Number: 414-29
Well Type: Development Well	Well Country: United States of America	
H2S Present:	Well State: Colorado	Well County: Garfield

Dear Customer,

We hope that you were satisfied with the service quality of this job performed by Halliburton. It is the aim of our management and service personnel to deliver equipment and service of a standard unmatched in the service sector of the energy industry.

Please take the time to let us know if our performance met with your satisfaction. Please be as critical as possible to ensure we constantly improve our service. Your comments are of great value to us and are intended for the exclusive use of Halliburton.

CUSTOMER SATISFACTION SURVEY

CATEGORY	CUSTOMER SATISFACTION RESPONSE	
Survey Conducted Date	The date the survey was conducted	7/25/2012
Survey Interviewer	The survey interviewer is the person who initiated the survey.	ERIC STILLSON (HX26907)
Customer Participation	Did the customer participate in this survey? (Y/N)	Yes
Customer Representative	Enter the Customer representative name	MIKE ROWELAND
HSE	Was our HSE performance satisfactory? Circle Y or N	Yes
Equipment	Were you satisfied with our Equipment? Circle Y or N	Yes
Personnel	Were you satisfied with our people? Circle Y or N	Yes
Customer Comment	Customer's Comment	GOOD JOB

CUSTOMER SIGNATURE

Sales Order #: 9692728	Line Item: 10	Survey Conducted Date: 7/25/2012
Customer: WPX ENERGY ROCKY MOUNTAIN LLC-EBUS		Job Type (BOM): CMT SQUEEZE PERFORATIONS BOM
Customer Representative: MIKE ROWELAND		API / UWI: (leave blank if unknown) 05-045-19518
Well Name: PA		Well Number: 414-29
Well Type: Development Well	Well Country: United States of America	
H2S Present:	Well State: Colorado	Well County: Garfield

KEY PERFORMANCE INDICATORS

General	
Survey Conducted Date	7/25/2012
The date the survey was conducted	

Cementing KPI Survey	
Type of Job	0
Select the type of job. (Cementing or Non-Cementing)	
Select the Maximum Deviation range for this Job	Vertical
What is the highest deviation for the job you just completed? This may not be the maximum well deviation.	
Total Operating Time (hours)	4
Total Operating Hours Including Rig-up, Pumping, Rig-down. Enter in decimal format.	
HSE Incident, Accident, Injury	No
HSE Incident, Accident, Injury. This should be recordable incidents only.	
Was the job purpose achieved?	Yes
Was the job delivered correctly as per customer agreed design?	
Operating Hours (Pumping Hours)	2
Total number of hours pumping fluid on this job. Enter in decimal format.	
Customer Non-Productive Rig Time (hrs)	0
Lost time due to Halliburton in the start, execution, or completion of an ordered service or product, or delays in a follow-on service. Enter in decimal format. 0 if none.	
Type of Rig Classification Job Was Performed	Drilling Rig (Portable)
Type Of Rig (classification) Job Was Performed On	
Number Of JSAs Performed	7
Number Of Jsas Performed	
Number of Unplanned Shutdowns	0
Unplanned shutdown is when injection stops for any period of time.	
Was this a Primary Cement Job (Yes / No)	No

Sales Order #: 9692728	Line Item: 10	Survey Conducted Date: 7/25/2012
Customer: WPX ENERGY ROCKY MOUNTAIN LLC-EBUS		Job Type (BOM): CMT SQUEEZE PERFORATIONS BOM
Customer Representative: MIKE ROWELAND		API / UWI: (leave blank if unknown) 05-045-19518
Well Name: PA		Well Number: 414-29
Well Type: Development Well	Well Country: United States of America	
H2S Present:	Well State: Colorado	Well County: Garfield

Primary Cement Job= Casing job, Liner job, or Tie-back job.	
Was this a Plug or a Squeeze Job? Please select the appropriate choice	No
Was this a Primary or a Remedial Job? Kick off plug, Plug to Abandon, LCM plug or Planned Liner Top Squeeze, Squeeze of existing perforations, Squeeze of casing leak	No
Mixing Density of Job Stayed in Designed Density Range (0-100%) Density Range defined as +/- .20 ppg. Calculation: Total BBLs cement mixed at designed density divided by total BBLs of cement multiplied by 100	100
Was Automated Density Control Used? Was Automated Density Control (ADC) Used ?	Yes
Pump Rate (percent) of Job Stayed At Designed Pump Rate Pump Rate range defined as +/- 1bbl/min. Calculation: Total BBLs of fluid pumped at the designed rate divided by Total BBLs of fluid pumped, multiplied by 100	100
Nbr of Remedial Sqz Jobs Rqd - Competition Number Of Remedial Squeeze Jobs Required After Primary Job Performed By Competition	0
Nbr of Remedial Plug Jobs Rqd - HES Number Of Remedial Plug Jobs Needed After Primary Plug Pumped By HES	0
Nbr of Remedial Sqz Jobs Rqd - HES Number Of Remedial Squeeze Jobs Required After Primary Job Performed By HES	0