

---

# **WPX ENERGY ROCKY MOUNTAIN LLC-EBUS**

---

**PA 414-29  
Parachute  
Garfield County , Colorado**

## **Cement Surface Casing** **26-Feb-2012**

### **Post Job Report**

## The Road to Excellence Starts with Safety

Sold To #: 300721	Ship To #: 2907916	Quote #:	Sales Order #: 9270791
Customer: WPX ENERGY ROCKY MOUNTAIN LLC-EBUS		Customer Rep: Nicholas, Larry	
Well Name: PA		Well #: 414-29	API/UWI #: 05-045-19518
Field: Parachute	City (SAP): PARACHUTE	County/Parish: Garfield	State: Colorado
Lat: N 39.49 deg. OR N 39 deg. 29 min. 23.575 secs.		Long: W 108.023 deg. OR W -109 deg. 58 min. 36.797 secs.	
Contractor: NABORS		Rig/Platform Name/Num: NABORS 577	
Job Purpose: Cement Surface Casing			
Well Type: Development Well		Job Type: Cement Surface Casing	
Sales Person: SCOTT, KYLE		Srv Supervisor: YOUNG, JEREMY	MBU ID Emp #: 418013

## Job Personnel

HES Emp Name	Exp Hrs	Emp #	HES Emp Name	Exp Hrs	Emp #	HES Emp Name	Exp Hrs	Emp #
BURKE, BRENDAN Patrick	8.5	487782	CASTILLO, FRANCISCO Javier	8.5	513620	GOWEN, WESLEY M	8.5	496205
YOUNG, JEREMY R	8.5	418013						

## Equipment

HES Unit #	Distance-1 way	HES Unit #	Distance-1 way	HES Unit #	Distance-1 way	HES Unit #	Distance-1 way
10025118	60 mile	10784080	60 mile	10804579	60 mile	10871245	60 mile
11259881	60 mile	11360881	60 mile	11808831	60 mile		

## Job Hours

Date	On Location Hours	Operating Hours	Date	On Location Hours	Operating Hours	Date	On Location Hours	Operating Hours
02/26/2012	8.5	3						

**TOTAL** Total is the sum of each column separately

## Job

## Job Times

Formation Name					Date				Time	Time Zone		
Formation Depth (MD)		Top	Bottom		Called Out				26 - Feb - 2012	01:15	MST	
Form Type			BHST			On Location				26 - Feb - 2012	04:00	MST
Job depth MD		2240. ft		Job Depth TVD		2240. ft		Job Started		26 - Feb - 2012	09:26	MST
Water Depth		Wk Ht Above Floor			3. ft		Job Completed		26 - Feb - 2012	10:49	MST	
Perforation Depth (MD)		From	To		Departed Loc				26 - Feb - 2012	12:30	MST	

## Well Data

Description	New / Used	Max pressure psig	Size in	ID in	Weight lbm/ft	Thread	Grade	Top MD ft	Bottom MD ft	Top TVD ft	Bottom TVD ft
13 1/2" OPEN HOLE				13.5				.	2260.		
9 5/8" SURFACE CASING	Unknown		9.625	9.001	32.3		H-40	.	2240.		

Sales/Rental/3<sup>rd</sup> Party (HES)

Description	Qty	Qty uom	Depth	Supplier
PLUG,CMTG,TOP,9 5/8,HWE,8.16 MIN/9.06 MA	1	EA		

## Tools and Accessories

Type	Size	Qty	Make	Depth	Type	Size	Qty	Make	Type	Size	Qty	Make
Guide Shoe					Packer				Top Plug	9.625	1	HES
Float Shoe					Bridge Plug				Bottom Plug			
Float Collar					Retainer				SSR plug set			
Insert Float									Plug Container	9.625	1	HES
Stage Tool									Centralizers			

## Miscellaneous Materials

Gelling Agt	Conc	Surfactant	Conc	Acid Type	Qty	Conc	%
Treatment Fld	Conc	Inhibitor	Conc	Sand Type	Size		Qty

## Fluid Data

Stage/Plug #: 1

Fluid #	Stage Type	Fluid Name	Qty	Qty uom	Mixing Density lbm/gal	Yield ft <sup>3</sup> /sk	Mix Fluid Gal/sk	Rate bbl/min	Total Mix Fluid Gal/sk
1	Fresh Water	FRESH WATER	20.00	bbl	8.33	.0	.0	4	
2	Lead Cement	VERSACEM (TM) SYSTEM (452010)	340.0	sacks	12.3	2.38	13.75	8	13.75
	13.75 Gal	FRESH WATER							
3	VersaCem Tail	VERSACEM (TM) SYSTEM (452010)	160.0	sacks	12.8	2.11	11.75	8	11.75
	11.75 Gal	FRESH WATER							
4	Displacement Fluid	FRESH WATER	173.10	bbl	8.34	.0	.0	10	
<b>Calculated Values</b>		<b>Pressures</b>		<b>Volumes</b>					
Displacement	173.1	Shut In: Instant		Lost Returns	NO	Cement Slurry	204.1	Pad	
Top Of Cement	SURFACE	5 Min		Cement Returns	33	Actual Displacement	173.1	Treatment	
Frac Gradient		15 Min		Spacers	20	Load and Breakdown		Total Job	397.3
<b>Rates</b>									
Circulating		Mixing	8	Displacement	10	Avg. Job			9
Cement Left In Pipe	Amount	40 ft	Reason	Shoe Joint					
Frac Ring # 1 @	ID		Frac ring # 2 @	ID		Frac Ring # 3 @	ID		Frac Ring # 4 @
The Information Stated Herein Is Correct				Customer Representative Signature					

*The Road to Excellence Starts with Safety*

<b>Sold To #:</b> 300721		<b>Ship To #:</b> 2907916		<b>Quote #:</b>		<b>Sales Order #:</b> 9270791	
<b>Customer:</b> WPX ENERGY ROCKY MOUNTAIN LLC-EBUS				<b>Customer Rep:</b> Nicholas, Larry			
<b>Well Name:</b> PA			<b>Well #:</b> 414-29			<b>API/UWI #:</b> 05-045-19518	
<b>Field:</b> Parachute		<b>City (SAP):</b> PARACHUTE		<b>County/Parish:</b> Garfield		<b>State:</b> Colorado	
<b>Legal Description:</b>							
<b>Lat:</b> N 39.49 deg. OR N 39 deg. 29 min. 23.575 secs.				<b>Long:</b> W 108.023 deg. OR W -109 deg. 58 min. 36.797 secs.			
<b>Contractor:</b> NABORS			<b>Rig/Platform Name/Num:</b> NABORS 577				
<b>Job Purpose:</b> Cement Surface Casing						<b>Ticket Amount:</b>	
<b>Well Type:</b> Development Well			<b>Job Type:</b> Cement Surface Casing				
<b>Sales Person:</b> SCOTT, KYLE			<b>Srv Supervisor:</b> YOUNG, JEREMY			<b>MBU ID Emp #:</b> 418013	

Activity Description	Date/Time	Cht #	Rate bbl/min	Volume bbl		Pressure psig		Comments
				Stage	Total	Tubing	Casing	
Call Out	02/26/2012 01:15							TD 2260 FT, TP 2240 FT, SHOE 40 FT, HOLE 13 1/2 IN, MUD WT 10.1PPG, CSG 9 5/8 IN 32.3 LB/FT H-40
Pre-Convoy Safety Meeting	02/26/2012 02:50							WITH ALL HES PERSONNEL
Crew Leave Yard	02/26/2012 03:00							
Arrive At Loc	02/26/2012 04:00							RIG WAS RUNNING CASING UPON HES ARRIVAL
Assessment Of Location Safety Meeting	02/26/2012 08:00							WITH ALL HES PERSONNEL
Other	02/26/2012 08:10							SPOT EQUIPMENT
Pre-Rig Up Safety Meeting	02/26/2012 08:20							WITH ALL HES PERSONNEL
Rig-Up Equipment	02/26/2012 08:30							
Pre-Job Safety Meeting	02/26/2012 09:10							WITH ALL PERSONNEL ON LOCATION
Start Job	02/26/2012 09:26							
Other	02/26/2012 09:27		2	2			65.0	FILL LINES WITH FRESH WATER
Test Lines	02/26/2012 09:29							TEST LINES TO 4000 PSI. PRESSURE HOLDING
Pump Spacer 1	02/26/2012 09:36		4	20			150.0	FRESH WATER
Pump Lead Cement	02/26/2012 09:47		8	144.1			400.0	340 SKS AT 12.3 PPG, 2.38 FT3/SK, 13.75 GAL/SK
Activity Description	Date/Time	Cht	Rate bbl/min	Volume bbl		Pressure psig		Comments

Sold To # : 300721

Ship To # :2907916

Quote # :

Sales Order # :

9270791

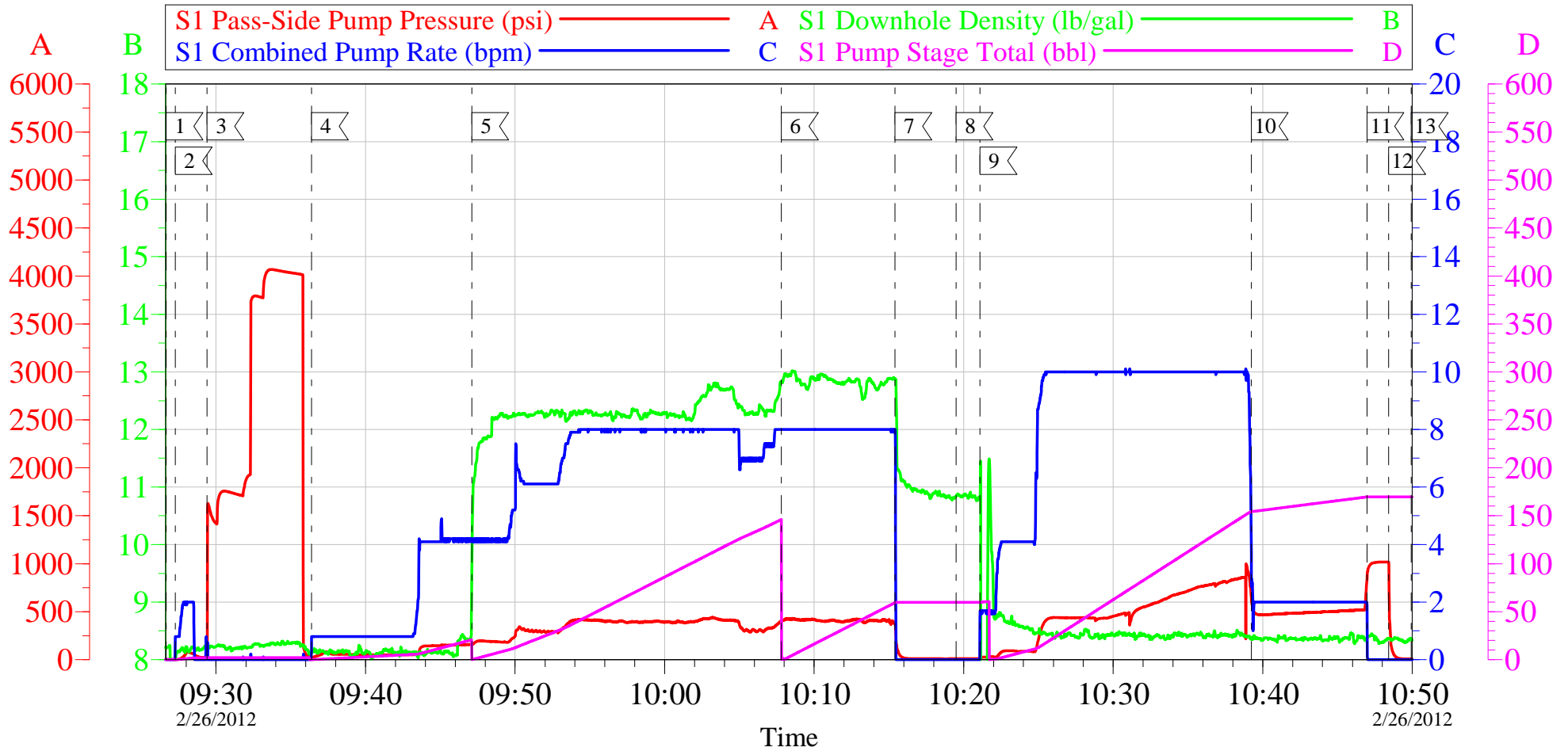
SUMMIT Version: 7.3.0021

Saturday, March 03, 2012 03:21:00

		#		Stage	Total	Tubing	Casing	
Pump Tail Cement	02/26/2012 10:07		8	60.1			400.0	160 SKS AT 12.8 PPG, 2.11 FT3/SK, 11.75 GAL/SK
Shutdown	02/26/2012 10:15							
Drop Top Plug	02/26/2012 10:19							PLUG LAUNCHED
Pump Displacement	02/26/2012 10:21		10	153.1			977.0	FRESH WATER
Slow Rate	02/26/2012 10:39		2	20			520.0	SLOW RATE 20 BBLS PRIOR TO CALCULATED DISPLACEMENT
Bump Plug	02/26/2012 10:46		2		173.1		1020.0	PLUG BUMPED
Check Floats	02/26/2012 10:48							FLOATS HOLDING. RETURNED 1 BBL H2O TO PUMP
End Job	02/26/2012 10:49							PIPE WAS STATIC DURING JOB. GOOD CIRCULATION THROUGHOUT JOB. HES RETURNED 33 BBL OF CEMENT TO SURFACE
Pre-Rig Down Safety Meeting	02/26/2012 11:00							WITH ALL HES PERSONNEL
Rig-Down Equipment	02/26/2012 11:10							
Pre-Convoy Safety Meeting	02/26/2012 12:20							WITH ALL HES PERSONNEL
Crew Leave Location	02/26/2012 12:30							
Comment	02/26/2012 12:31							THANK YOU FOR USING HALLIBURTON CEMENT DEPARTMENT. JEREMY YOUNG AND CREW.

# WPX - PA 414-29

9 5/8 SURFACE



## Local Event Log

1 START JOB	09:26:40	2 FILL LINES	09:27:16	3 TEST LINES	09:29:24
4 PUMP H2O SPACER	09:36:23	5 PUMP LEAD CEMENT	09:47:06	6 PUMP TAIL CEMENT	10:07:48
7 SHUTDOWN	10:15:24	8 DROP TOP PLUG	10:19:30	9 PUMP DISPLACEMENT	10:21:05
10 SLOW RATE	10:39:14	11 BUMP PLUG	10:46:59	12 CHECK FLOATS	10:48:25
13 END JOB	10:49:56				

Customer: WPX  
Well Description: PA 414-29  
Company Rep: LARRY NICHOLAS

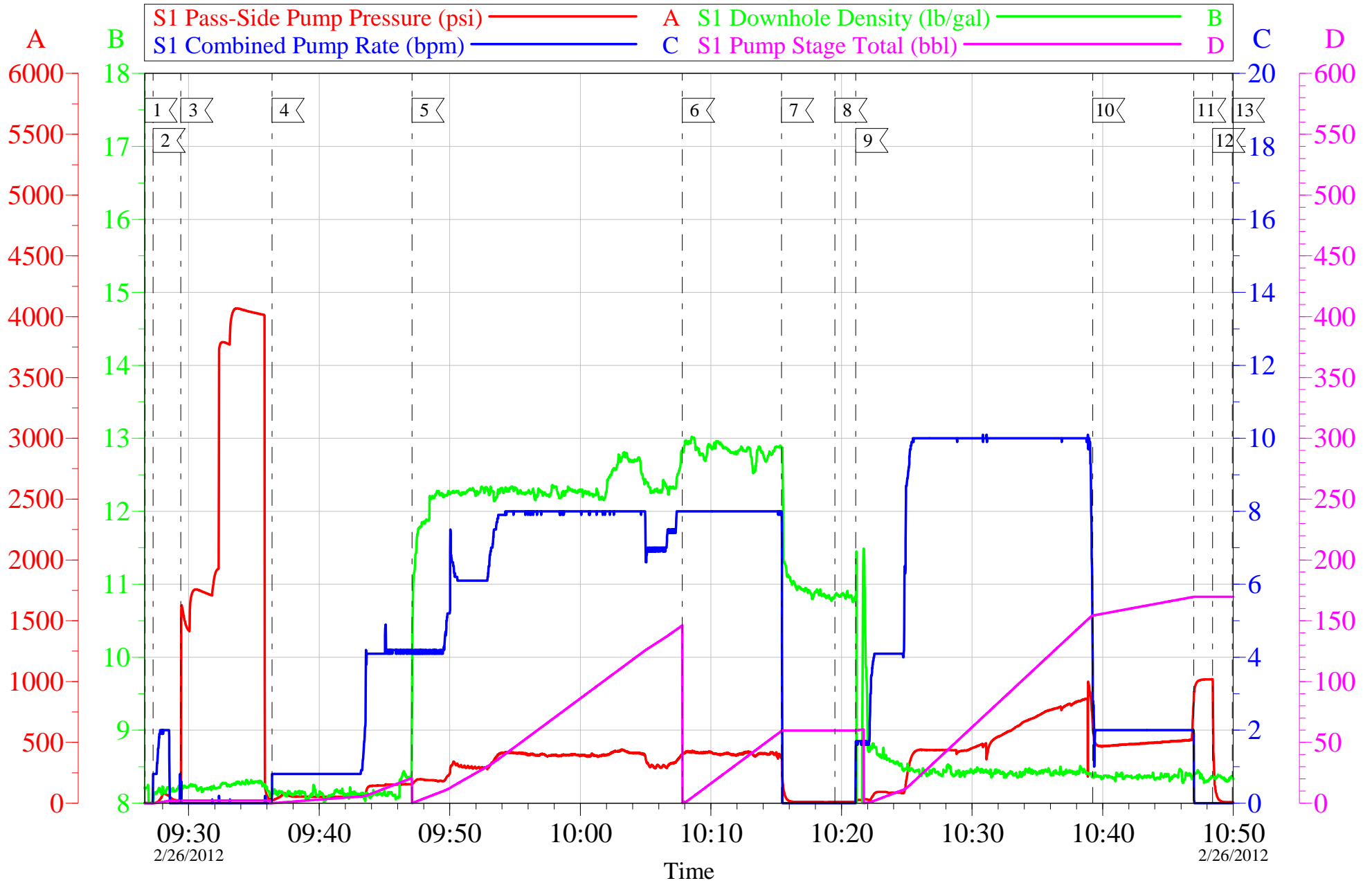
Job Date: 26-Feb-2012  
Job Type: SURFACE  
Cement Supervisor: JEREMY YOUNG

Sales Order #: 9270791  
ADC Used: YES  
Elite #: JAVIER CASTILLO

OptiCem v6.4.10  
26-Feb-12 11:06

# WPX - PA 414-29

9 5/8 SURFACE



Customer: WPX	Job Date: 26-Feb-2012	Sales Order #: 9270791
Well Description: PA 414-29	Job Type: SURFACE	ADC Used: YES
Company Rep: LARRY NICHOLAS	Cement Supervisor: JEREMY YOUNG	Elite #8: JAVIER CASTILLO

OptiCem v6.4.10  
26-Feb-12 11:06

# HALLIBURTON

## Water Analysis Report

Company: WPX

Submitted by: JEREMY YOUNG

Attention: LAB

Lease PA

Well # 414-29

Date: 2/26/2012

Date Rec.:

S.O.# 9270791

Job Type: SURFACE

Specific Gravity	<i>MAX</i>	<b>1</b>
pH	<i>8</i>	<b>7</b>
Potassium (K)	<i>5000</i>	<b>300</b> Mg / L
Calcium (Ca)	<i>500</i>	<b>120</b> Mg / L
Iron (FE2)	<i>300</i>	<b>0</b> Mg / L
Chlorides (Cl)	<i>3000</i>	<b>250</b> Mg / L
Sulfates (SO <sub>4</sub> )	<i>1500</i>	<b>UNDER 200</b> Mg / L
Chlorine (Cl <sub>2</sub> )		<b>0</b> Mg / L
Temp	<i>40-80</i>	<b>40</b> Deg
Total Dissolved Solids		<b>520</b> Mg / L

Respectfully: JEREMY YOUNG

Title: CEMENTING SUPERVISOR

Location: Grand Junction, CO

NOTICE:

This report is limited to the described sample tested. Any person using or relying on this report agrees that Halliburton shall not be liable for any loss or damage whether due to act or omission resulting from such report or its use.



<b>Sales Order #:</b> 9270791	<b>Line Item:</b> 10	<b>Survey Conducted Date:</b> 2/26/2012
<b>Customer:</b> WPX ENERGY ROCKY MOUNTAIN LLC-EBUS		<b>Job Type (BOM):</b> CMT SURFACE CASING BOM
<b>Customer Representative:</b> LARRY NICHOLAS		<b>API / UWI: (leave blank if unknown)</b> 05-045-19518
<b>Well Name:</b> PA		<b>Well Number:</b> 414-29
<b>Well Type:</b> Development Well	<b>Well Country:</b> United States of America	
<b>H2S Present:</b>	<b>Well State:</b> Colorado	<b>Well County:</b> Garfield

Dear Customer,

We hope that you were satisfied with the service quality of this job performed by Halliburton. It is the aim of our management and service personnel to deliver equipment and service of a standard unmatched in the service sector of the energy industry.

Please take the time to let us know if our performance met with your satisfaction. Please be as critical as possible to ensure we constantly improve our service. Your comments are of great value to us and are intended for the exclusive use of Halliburton.

### CUSTOMER SATISFACTION SURVEY

CATEGORY	CUSTOMER SATISFACTION RESPONSE	
Survey Conducted Date	The date the survey was conducted	2/26/2012
Survey Interviewer	The survey interviewer is the person who initiated the survey.	JEREMY YOUNG (HX37077)
Customer Participation	Did the customer participate in this survey? (Y/N)	Yes
Customer Representative	Enter the Customer representative name	LARRY NICHOLAS
HSE	Was our HSE performance satisfactory? Circle Y or N	Yes
Equipment	Were you satisfied with our Equipment? Circle Y or N	Yes
Personnel	Were you satisfied with our people? Circle Y or N	Yes
Customer Comment	Customer's Comment	GREAT JOB THANKS

<b>CUSTOMER SIGNATURE</b>
---------------------------

<b>Sales Order #:</b> 9270791	<b>Line Item:</b> 10	<b>Survey Conducted Date:</b> 2/26/2012
<b>Customer:</b> WPX ENERGY ROCKY MOUNTAIN LLC-EBUS		<b>Job Type (BOM):</b> CMT SURFACE CASING BOM
<b>Customer Representative:</b> LARRY NICHOLAS		<b>API / UWI: (leave blank if unknown)</b> 05-045-19518
<b>Well Name:</b> PA		<b>Well Number:</b> 414-29
<b>Well Type:</b> Development Well	<b>Well Country:</b> United States of America	
<b>H2S Present:</b>	<b>Well State:</b> Colorado	<b>Well County:</b> Garfield

### KEY PERFORMANCE INDICATORS

General	
<b>Survey Conducted Date</b>	2/26/2012
The date the survey was conducted	

Cementing KPI Survey	
<b>Type of Job</b>	0
Select the type of job. (Cementing or Non-Cementing)	
<b>Select the Maximum Deviation range for this Job</b>	Vertical
What is the highest deviation for the job you just completed? This may not be the maximum well deviation.	
<b>Total Operating Time (hours)</b>	3
Total Operating Hours Including Rig-up, Pumping, Rig-down. Enter in decimal format.	
<b>HSE Incident, Accident, Injury</b>	No
HSE Incident, Accident, Injury. This should be recordable incidents only.	
<b>Was the job purpose achieved?</b>	Yes
Was the job delivered correctly as per customer agreed design?	
<b>Operating Hours (Pumping Hours)</b>	1.5
Total number of hours pumping fluid on this job. Enter in decimal format.	
<b>Customer Non-Productive Rig Time (hrs)</b>	0
Lost time due to Halliburton in the start, execution, or completion of an ordered service or product, or delays in a follow-on service. Enter in decimal format. 0 if none.	
<b>Type of Rig Classification Job Was Performed</b>	Drilling Rig (Portable)
Type Of Rig (classification) Job Was Performed On	
<b>Number Of JSAs Performed</b>	6
Number Of Jsas Performed	
<b>Number of Unplanned Shutdowns</b>	0
Unplanned shutdown is when injection stops for any period of time.	
<b>Was this a Primary Cement Job (Yes / No)</b>	Yes

<b>Sales Order #:</b> 9270791	<b>Line Item:</b> 10	<b>Survey Conducted Date:</b> 2/26/2012
<b>Customer:</b> WPX ENERGY ROCKY MOUNTAIN LLC-EBUS		<b>Job Type (BOM):</b> CMT SURFACE CASING BOM
<b>Customer Representative:</b> LARRY NICHOLAS		<b>API / UWI: (leave blank if unknown)</b> 05-045-19518
<b>Well Name:</b> PA		<b>Well Number:</b> 414-29
<b>Well Type:</b> Development Well	<b>Well Country:</b> United States of America	
<b>H2S Present:</b>	<b>Well State:</b> Colorado	<b>Well County:</b> Garfield

Primary Cement Job= Casing job, Liner job, or Tie-back job.	
<b>Did We Run Wiper Plugs?</b> Did We Run Top And Bottom Casing Wiper Plugs?	Top
<b>Mixing Density of Job Stayed in Designed Density Range (0-100%)</b> Density Range defined as +/- .20 ppg. Calculation: Total BBLs cement mixed at designed density divided by total BBLs of cement multiplied by 100	90
<b>Was Automated Density Control Used?</b> Was Automated Density Control (ADC) Used ?	Yes
<b>Pump Rate (percent) of Job Stayed At Designed Pump Rate</b> Pump Rate range defined as +/- 1bbl/min. Calculation: Total BBLs of fluid pumped at the designed rate divided by Total BBLs of fluid pumped, multiplied by 100	95
<b>Nbr of Remedial Sqz Jobs Rqd - Competition</b> Number Of Remedial Squeeze Jobs Required After Primary Job Performed By Competition	0
<b>Nbr of Remedial Plug Jobs Rqd - HES</b> Number Of Remedial Plug Jobs Needed After Primary Plug Pumped By HES	0
<b>Nbr of Remedial Sqz Jobs Rqd - HES</b> Number Of Remedial Squeeze Jobs Required After Primary Job Performed By HES	0