
WPX ENERGY ROCKY MOUNTAIN LLC-EBUS

**KP 311-27
MAMM CREEK
Garfield County , Colorado**

Cement Surface Casing **16-Feb-2012**

Post Job Summary

The Road to Excellence Starts with Safety

Sold To #: 300721	Ship To #: 2903165	Quote #:	Sales Order #: 9215610
Customer: WPX ENERGY ROCKY MOUNTAIN LLC-EBUS	Customer Rep: Duniho, Al		
Well Name: KP	Well #: 311-27	API/UWI #: 05-045-20699	
Field: MAMM CREEK	City (SAP): SILT	County/Parish: Garfield	State: Colorado
Lat: N 39.506 deg. OR N 39 deg. 30 min. 20.394 secs.	Long: W 107.551 deg. OR W -108 deg. 26 min. 54.65 secs.		
Contractor: NABORS 573	Rig/Platform Name/Num: NABORS 573		
Job Purpose: Cement Surface Casing			
Well Type: Development Well	Job Type: Cement Surface Casing		
Sales Person: SCOTT, KYLE	Srvc Supervisor: JAMISON, PRICE	MBU ID Emp #: 229155	

Job Personnel

HES Emp Name	Exp Hrs	Emp #	HES Emp Name	Exp Hrs	Emp #	HES Emp Name	Exp Hrs	Emp #
ANDERSON, ADAM S	10.5	456683	BATH, KYLE Thomas	10.5	477632	JAMISON, PRICE W	10.5	229155
SINCLAIR, DAN J	10.5	338784						

Equipment

HES Unit #	Distance-1 way	HES Unit #	Distance-1 way	HES Unit #	Distance-1 way	HES Unit #	Distance-1 way
10867425	60 mile	10897891	60 mile	11021972	60 mile	11027039	60 mile
11560046	60 mile	11562538	60 mile	11583934	60 mile		

Job Hours

Date	On Location Hours	Operating Hours	Date	On Location Hours	Operating Hours	Date	On Location Hours	Operating Hours
2/16/12	10.5	2						

TOTAL Total is the sum of each column separately

Job

Job Times

Formation Name	Formation Depth (MD)	Top	Bottom	Called Out	Date	Time	Time Zone
Form Type			BHST	On Location	16 - Feb - 2012	05:00	MST
Job depth MD	1379. ft		Job Depth TVD	Job Started	16 - Feb - 2012	13:45	MST
Water Depth			Wk Ht Above Floor	Job Completed	16 - Feb - 2012	14:41	MST
Perforation Depth (MD)	From		To	Departed Loc	16 - Feb - 2012	15:30	MST

Well Data

Description	New / Used	Max pressure psig	Size in	ID in	Weight lbm/ft	Thread	Grade	Top MD ft	Bottom MD ft	Top TVD ft	Bottom TVD ft
OPEN HOLE				13.5				.	1394.	.	1394.
SURFACE CASING	Unknown		9.625	9.001	32.3		H-40	.	1379.	.	1379.

Sales/Rental/3rd Party (HES)

Description	Qty	Qty uom	Depth	Supplier
PLUG,CMTG,TOP,9 5/8,HWE,8.16 MIN/9.06 MA	1	EA		

Tools and Accessories

Type	Size	Qty	Make	Depth	Type	Size	Qty	Make	Depth	Type	Size	Qty	Make
Guide Shoe					Packer					Top Plug			
Float Shoe					Bridge Plug					Bottom Plug			
Float Collar					Retainer					SSR plug set			
Insert Float										Plug Container			
Stage Tool										Centralizers			

Miscellaneous Materials

Gelling Agt	Conc	Surfactant	Conc	Acid Type	Qty	Conc	%
Treatment Fld	Conc	Inhibitor	Conc	Sand Type	Size		Qty

Fluid Data

Stage/Plug #: 1

Fluid #	Stage Type	Fluid Name	Qty	Qty uom	Mixing Density lbm/gal	Yield ft ³ /sk	Mix Fluid Gal/sk	Rate bbl/min	Total Mix Fluid Gal/sk
1	Fresh Water		20.00	bbl	8.4	.0	.0	6.0	
2	Lead Cement	VERSACEM (TM) SYSTEM (452010)	215.0	sacks	12.3	2.38	13.75	8.0	13.75
	13.75 Gal	FRESH WATER							
3	Tail Cement	VERSACEM (TM) SYSTEM (452010)	160.0	sacks	12.8	2.11	11.75	8.0	11.75
	11.75 Gal	FRESH WATER							
4	Displacement Fluid		104.9	bbl	8.4	.0	.0	10.0	
Calculated Values		Pressures		Volumes					
Displacement	104.9	Shut In: Instant		Lost Returns	NO	Cement Slurry	151	Pad	
Top Of Cement	SURFACE	5 Min		Cement Returns	28	Actual Displacement	104.9	Treatment	
Frac Gradient		15 Min		Spacers	20	Load and Breakdown		Total Job	276
Rates									
Circulating	13	Mixing	8	Displacement	10	Avg. Job	8		
Cement Left In Pipe	Amount	45.9 ft	Reason	Shoe Joint					
Frac Ring # 1 @	ID	Frac ring # 2 @	ID	Frac Ring # 3 @	ID	Frac Ring # 4 @	ID		
The Information Stated Herein Is Correct				Customer Representative Signature					

The Road to Excellence Starts with Safety

Sold To #: 300721		Ship To #: 2903165		Quote #:		Sales Order #: 9215610	
Customer: WPX ENERGY ROCKY MOUNTAIN LLC-EBUS				Customer Rep: Dunihoo, Al			
Well Name: KP			Well #: 311-27			API/UWI #: 05-045-20699	
Field: MAMM CREEK		City (SAP): SILT		County/Parish: Garfield			State: Colorado
Legal Description:							
Lat: N 39.506 deg. OR N 39 deg. 30 min. 20.394 secs.				Long: W 107.551 deg. OR W -108 deg. 26 min. 54.65 secs.			
Contractor: NABORS 573			Rig/Platform Name/Num: NABORS 573				
Job Purpose: Cement Surface Casing						Ticket Amount:	
Well Type: Development Well			Job Type: Cement Surface Casing				
Sales Person: SCOTT, KYLE			Srvc Supervisor: JAMISON, PRICE			MBU ID Emp #: 229155	

Activity Description	Date/Time	Cht #	Rate bbl/min	Volume bbl		Pressure psig		Comments
				Stage	Total	Tubing	Casing	
Call Out	02/16/2012 02:00							TD 1394 HOLE SIZE 13.5 TP 1397 CASING 9.625 32.3 # H-40 SHOE JOINT 45.91 FT MUD 10.3 PPG
Depart Yard Safety Meeting	02/16/2012 02:50							
Crew Leave Yard	02/16/2012 03:00							
Arrive At Loc	02/16/2012 05:00							
Assessment Of Location Safety Meeting	02/16/2012 05:15							
Pre-Rig Up Safety Meeting	02/16/2012 12:50							
Pre-Job Safety Meeting	02/16/2012 13:20							
Start Job	02/16/2012 13:45							
Prime Pumps	02/16/2012 13:46		2	2			51.0	FRESH WATER
Test Lines	02/16/2012 13:48						5000. 0	
Pump Spacer 1	02/16/2012 13:52		6	20			204.0	FRESH WATER
Pump Lead Cement	02/16/2012 13:58		8	91.1			339.0	MIXED @ 12.3 PPG YIELD 2.38 WAT/REQ 13.75 215 SKS
Pump Tail Cement	02/16/2012 14:18		8	60.1			336.0	MIXED @ 12.8 PPG YIELD 2.11 WAT/REQ 11.75 160 SKS
Shutdown	02/16/2012 14:20							
Drop Plug	02/16/2012 14:22							

Cementing Job Log

Activity Description	Date/Time	Cht #	Rate bbl/ min	Volume bbl		Pressure psig		Comments
				Stage	Total	Tubing	Casing	
Pump Displacement	02/16/2012 14:23		10					FRESH WATER
Slow Rate	02/16/2012 14:34		2	95			603.0	
Bump Plug	02/16/2012 14:38		2	105			320.0	PRESSURE UP TO 937 PSI
Check Floats	02/16/2012 14:40							FLOATS HELD
End Job	02/16/2012 14:41							CEMENT BACK TO SURFACE 28 BBLS
Post-Job Safety Meeting (Pre Rig-Down)	02/16/2012 14:45							GOOD RETURNS THROUGHOUT JOB
Depart Location Safety Meeting	02/16/2012 15:20							CASING WAS NOT MOVED THROUGHOUT JOB
Crew Leave Location	02/16/2012 15:30							THANKS FOR USING HALLIBURTON BILL JAMISON & CREW

HALLIBURTON

Water Analysis Report

Company: WILLIAMS PRODUCTION

Submitted by: BILL JAMISON

Attention: JOHN TROUT

Lease KP

Well # 311-27

Date: 2/16/2012

Date Rec.: 2/16/2012

S.O.# 9215610

Job Type: 9 5/8" SURFACE

Specific Gravity	<i>MAX</i>	<i>1</i>
pH	<i>8</i>	<i>6.5</i>
Potassium (K)	<i>5000</i>	<i>200</i> Mg / L
Calcium (Ca)	<i>500</i>	<i>120</i> Mg / L
Iron (FE2)	<i>300</i>	<i>0</i> Mg / L
Chlorides (Cl)	<i>3000</i>	<i>0</i> Mg / L
Sulfates (SO ₄)	<i>1500</i>	<i>-200</i> Mg / L
Chlorine (Cl ₂)		<i>0</i> Mg / L
Temp	<i>40-80</i>	<i>40</i> Deg
Total Dissolved Solids		<i>210</i> Mg / L

Respectfully: BILL JAMISON

Title: CEMENTING SUPERVISOR

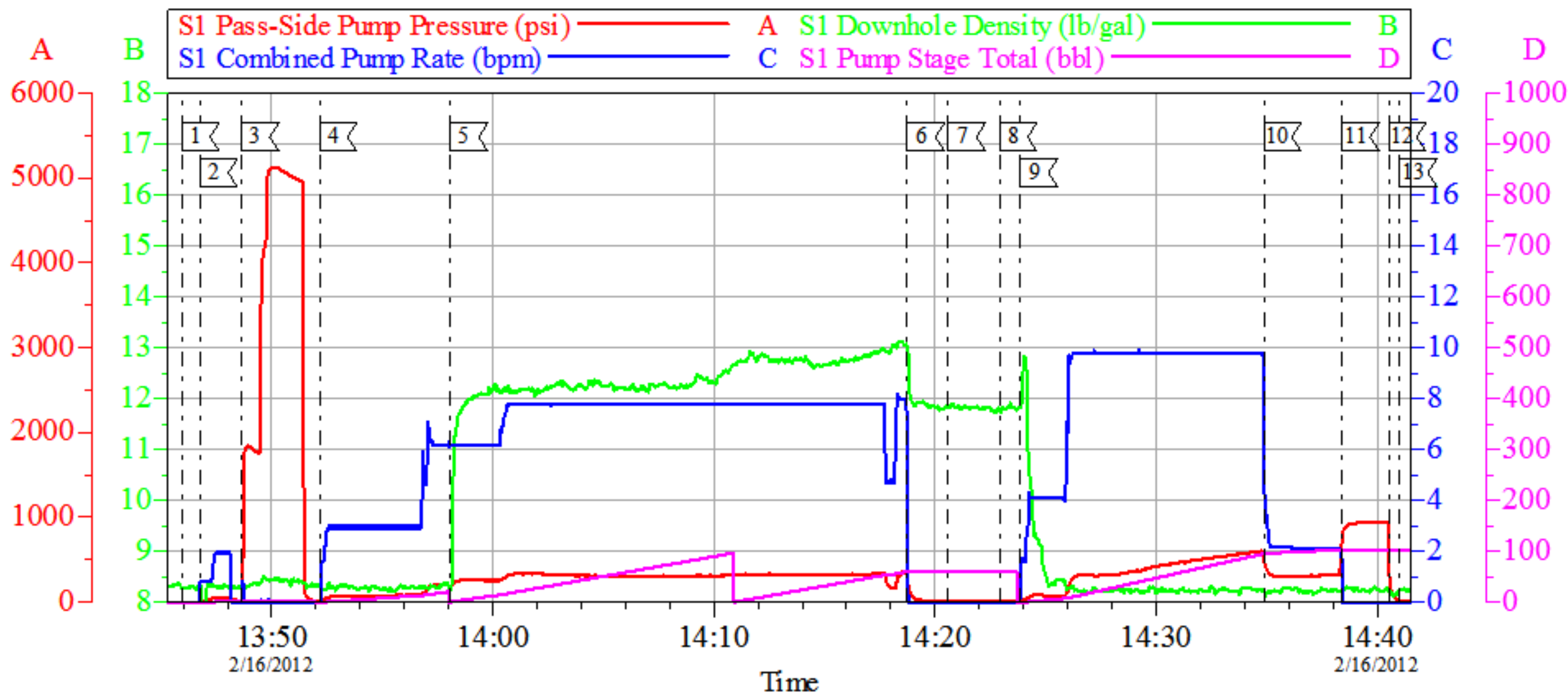
Location: Grand Junction, CO

NOTICE:

This report is limited to the described sample tested. Any person using or relying on this report agrees that Halliburton shall not be liable for any loss or damage whether due to act or omission resulting from such report o

WPX KP 311-27

9.625 SURFACE CASING



Local Event Log			
[1] START JOB	13:45:56	[2] PRIME LINES	13:46:46
[3] TEST LINES	13:48:39	[4] START FRESH WATER SPACER	13:52:10
[5] START LEAD CEMENT	13:58:05	[6] START TAIL CEMENT	14:18:45
[7] SHUT DOWN	14:20:36	[8] DROP PLUG	14:22:56
[9] START DISPLACEMENT	14:23:52	[10] SLOW RATE	14:34:53
[11] BUMP PLUG	14:38:25	[12] CHECK FLOATS	14:40:32
[13] END JOB	14:41:02		

Customer: WPX
Well Description: KP 311-27
Company Rep: AL DUNIHO

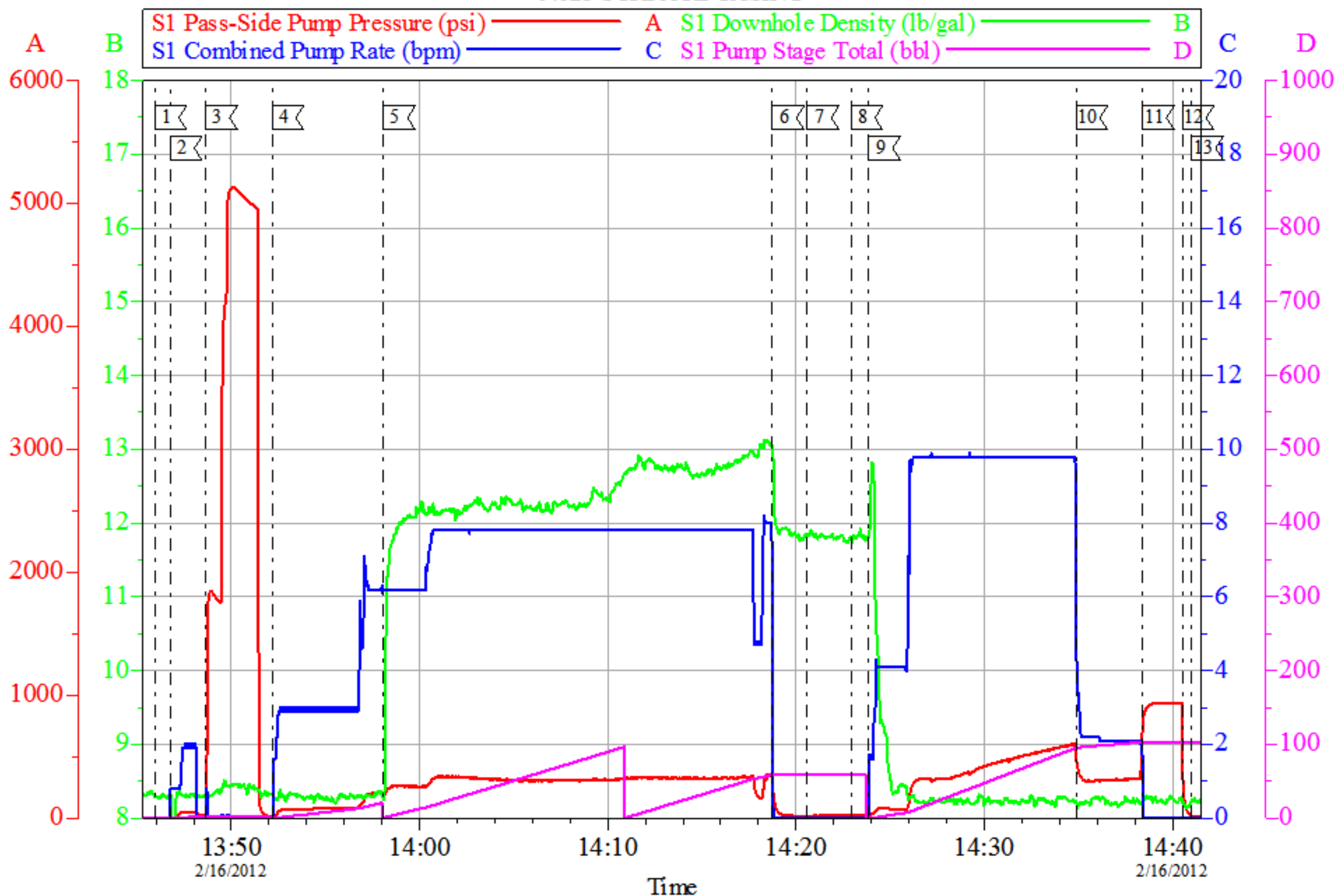
Job Date: 16-Feb-2012
Job Type: CEMENT
Cement Supervisor: BILL JAMISON

Sales Order #: 9215610
ADC Used: YES
Elite # 5 DAN SINCLAIR

OptiCem v6.4.10
16-Feb-12 14:43

WPX KP 311-27

9.625 SURFACE CASING



Customer: WPX
Well Description: KP 311-27
Company Rep: AL DUNIHO

Job Date: 16-Feb-2012
Job Type: CEMENT
Cement Supervisor: BILL JAMISON

Sales Order #: 9215610
ADC Used: YES
Elite # 5 DAN SINCLAIR

OptiCem v6.4.10
16-Feb-12 14:44

Sales Order #: 9215610	Line Item: 10	Survey Conducted Date: 2/16/2012
Customer: WPX ENERGY ROCKY MOUNTAIN LLC-EBUS		Job Type (BOM): CMT SURFACE CASING BOM
Customer Representative: AL DUNIHO		API / UWI: (leave blank if unknown) 05-045-20699
Well Name: KP		Well Number: 311-27
Well Type: Development Well	Well Country: United States of America	
H2S Present:	Well State: Colorado	Well County: Garfield

Dear Customer,

We hope that you were satisfied with the service quality of this job performed by Halliburton. It is the aim of our management and service personnel to deliver equipment and service of a standard unmatched in the service sector of the energy industry.

Please take the time to let us know if our performance met with your satisfaction. Please be as critical as possible to ensure we constantly improve our service. Your comments are of great value to us and are intended for the exclusive use of Halliburton.

CUSTOMER SATISFACTION SURVEY

CATEGORY	CUSTOMER SATISFACTION RESPONSE	
Survey Conducted Date	The date the survey was conducted	2/16/2012
Survey Interviewer	The survey interviewer is the person who initiated the survey.	PRICE JAMISON (HAL9235)
Customer Participation	Did the customer participate in this survey? (Y/N)	Yes
Customer Representative	Enter the Customer representative name	AL DUNIHO
HSE	Was our HSE performance satisfactory? Circle Y or N	Yes
Equipment	Were you satisfied with our Equipment? Circle Y or N	Yes
Personnel	Were you satisfied with our people? Circle Y or N	Yes
Customer Comment	Customer's Comment	GOOD JOB MEN

CUSTOMER SIGNATURE

Sales Order #: 9215610	Line Item: 10	Survey Conducted Date: 2/16/2012
Customer: WPX ENERGY ROCKY MOUNTAIN LLC-EBUS		Job Type (BOM): CMT SURFACE CASING BOM
Customer Representative: AL DUNIHO		API / UWI: (leave blank if unknown) 05-045-20699
Well Name: KP		Well Number: 311-27
Well Type: Development Well	Well Country: United States of America	
H2S Present:	Well State: Colorado	Well County: Garfield

KEY PERFORMANCE INDICATORS

General	
Survey Conducted Date The date the survey was conducted	2/16/2012

Cementing KPI Survey	
Type of Job Select the type of job. (Cementing or Non-Cementing)	0
Select the Maximum Deviation range for this Job What is the highest deviation for the job you just completed? This may not be the maximum well deviation.	Deviated
Total Operating Time (hours) Total Operating Hours Including Rig-up, Pumping, Rig-down. Enter in decimal format.	2
HSE Incident, Accident, Injury HSE Incident, Accident, Injury. This should be recordable incidents only.	No
Was the job purpose achieved? Was the job delivered correctly as per customer agreed design?	Yes
Operating Hours (Pumping Hours) Total number of hours pumping fluid on this job. Enter in decimal format.	1
Customer Non-Productive Rig Time (hrs) Lost time due to Halliburton in the start, execution, or completion of an ordered service or product, or delays in a follow-on service. Enter in decimal format. 0 if none.	0
Type of Rig Classification Job Was Performed Type Of Rig (classification) Job Was Performed On	Drilling Rig (Portable)
Number Of JSAs Performed Number Of Jsas Performed	5
Number of Unplanned Shutdowns Unplanned shutdown is when injection stops for any period of time.	0
Was this a Primary Cement Job (Yes / No)	Yes

Sales Order #: 9215610	Line Item: 10	Survey Conducted Date: 2/16/2012
Customer: WPX ENERGY ROCKY MOUNTAIN LLC-EBUS		Job Type (BOM): CMT SURFACE CASING BOM
Customer Representative: AL DUNIHO		API / UWI: (leave blank if unknown) 05-045-20699
Well Name: KP		Well Number: 311-27
Well Type: Development Well	Well Country: United States of America	
H2S Present:	Well State: Colorado	Well County: Garfield

Primary Cement Job= Casing job, Liner job, or Tie-back job.	
Did We Run Wiper Plugs? Did We Run Top And Bottom Casing Wiper Plugs?	Top
Mixing Density of Job Stayed in Designed Density Range (0-100%) Density Range defined as +/- .20 ppg. Calculation: Total BBLs cement mixed at designed density divided by total BBLs of cement multiplied by 100	98
Was Automated Density Control Used? Was Automated Density Control (ADC) Used ?	Yes
Pump Rate (percent) of Job Stayed At Designed Pump Rate Pump Rate range defined as +/- 1bbl/min. Calculation: Total BBLs of fluid pumped at the designed rate divided by Total BBLs of fluid pumped, multiplied by 100	98
Nbr of Remedial Sqz Jobs Rqd - Competition Number Of Remedial Squeeze Jobs Required After Primary Job Performed By Competition	0
Nbr of Remedial Plug Jobs Rqd - HES Number Of Remedial Plug Jobs Needed After Primary Plug Pumped By HES	0
Nbr of Remedial Sqz Jobs Rqd - HES Number Of Remedial Squeeze Jobs Required After Primary Job Performed By HES	0