

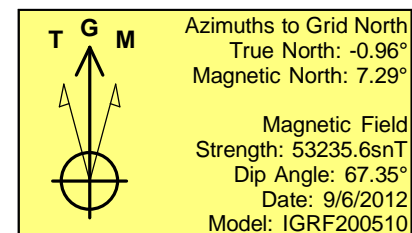
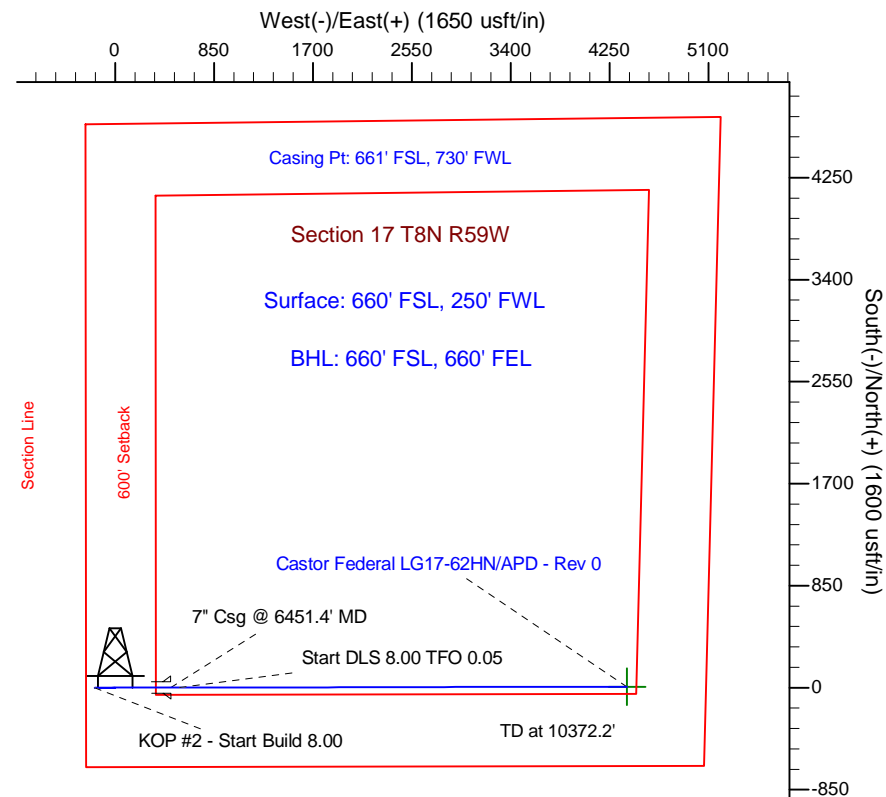
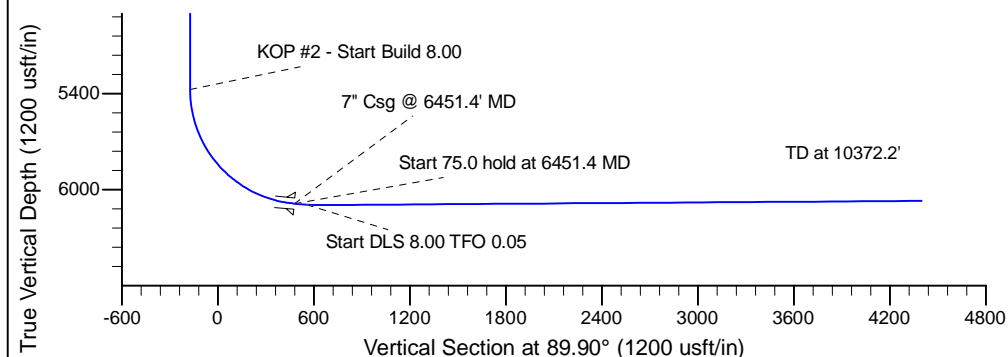
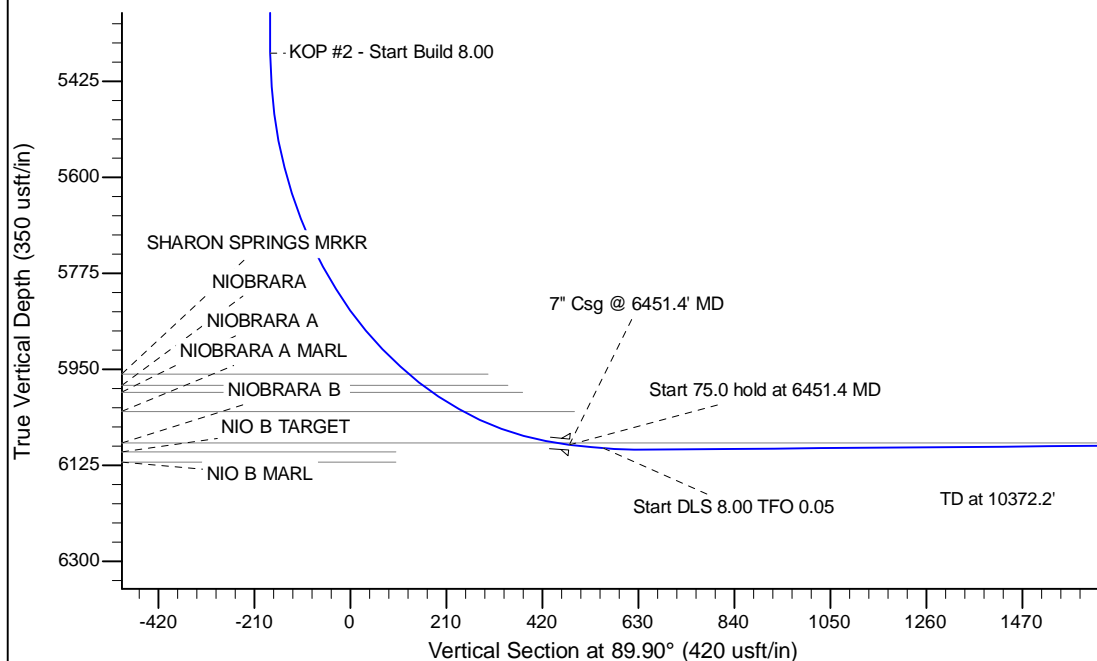
Project: Wattenberg Field
 Site: LG (Sec.17-T08N-R59W) Weld County, CO
 Well: Castor Federal LG17-62HN
 Wellbore: Original Drilling
 Design: APD - Rev 0

Northern Region Drilling

Geodetic System: US State Plane 1983
 Datum: North American Datum 1983
 Ellipsoid: GRS 1980
 Zone: Colorado Northern Zone
 System Datum: Mean Sea Level

SECTION DETAILS

Sec	MD	Inc	Azi	TVD	+N/-S	+E/-W	Dleg	TFace	VFace	Target
1	0.0	0.00	0.00	0.0	0.0	0.0	0.00	0.00	0.0	
2	2200.0	0.00	0.00	2200.0	0.0	0.0	0.00	0.00	0.0	
3	2680.1	12.00	270.00	2676.6	0.0	-50.1	2.50	270.00	-50.1	
4	3039.8	12.00	270.00	3028.4	0.0	-124.9	0.00	0.00	-124.9	
5	3519.9	0.00	0.00	3505.0	0.0	-175.0	2.50	180.00	-175.0	
6	5388.9	0.00	0.00	5374.0	0.0	-175.0	0.00	0.00	-175.0	
7	6451.4	85.00	89.90	6087.5	1.1	478.8	8.00	89.90	478.8	
8	6526.4	85.00	89.90	6094.0	1.3	553.5	0.00	0.00	553.5	
9	6593.9	90.40	89.90	6096.7	1.4	620.9	8.00	0.05	620.9	
10	10372.2	90.40	89.90	6070.3	7.7	4399.1	0.00	0.00	4399.1	Castor Federal LG17-62HN BHL 660'FSL, 660'FEL



WELL DETAILS: Castor Federal LG17-62HN			
Ground Level:	4845.0	Latitude	40.656875
Northing	1485617.94	Easting	3413548.87
Longitude	-104.009422		
Plan: APD - Rev 0 (Castor Federal LG17-62HN/Original Drilling)			
Created By:	Carrie Willers	Date:	16:11, September 06 2012
Checked:		Date:	
Reviewed:		Date:	
Approved:		Date:	