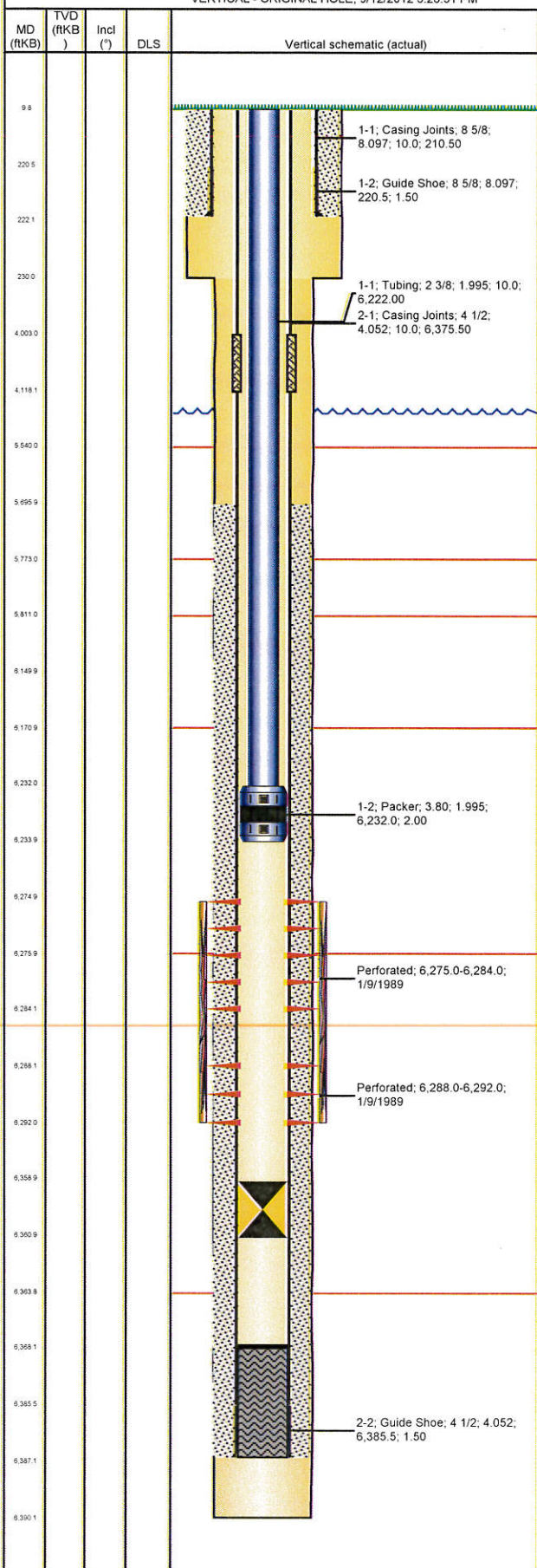


Well Name: LILLI UNIT 14-10

VERTICAL - ORIGINAL HOLE, 9/12/2012 3:28:51 PM



Well Header

API	Business Unit	District	Well Config
05-123-14105	WATTENBERG	25	VERTICAL
Original KB Elevation (ft)	KB - GL / MSL (ftKB)	Spud Date	P & A Date
4,719.00	10.00	12/28/1988	

Comment

Directions To Well

Surface Location (Congressional)

Quarter 1	Quarter 2	Quarter 3	Quarter 4	Section	Township	Twnshp...	Range	Rng E/W...
NW	SE	SW		10	8	N	58	W

Bottom Hole Location

North-South Distance (ft)	From N or S Line	East-West Distance (ft)	From E or W Line

Plug Back Total Depths

Date	Depth (ftKB)	Method	Com
1/5/1989	6,368.0	CASING TALLY	

Wellbore Sections

Section Des	Size (in)	Act Top (ftKB)	Act Btm (ftKB)
SURFACE	12 1/4	10.0	230.0
PRODUCTION	7 7/8	230.0	6,390.0

Zone Statuses

Zone Name	Status Date	Status	Job
D SAND	1/10/1989	PR	DRILLING/COMPLETION - ORIGINAL, 12/28/1988 00:00
D SAND	7/18/1996	PR	FRACTURE TREATMENT, 7/16/1996 00:00
D SAND	3/3/2006	SI	CASING REPAIR, 2/23/2006 00:00

Casing Strings

Surface, 222.0ftKB

Casing Description	Run Date	OD (in)	Wt/Len (L...)	Grade	Top (ftKB)	Set Depth...
Surface	12/29/1988	8 5/8	24.00	J-55	10.0	222.0

Production, 6,387.0ftKB

Casing Description	Run Date	OD (in)	Wt/Len (L...)	Grade	Top (ftKB)	Set Depth...
Production	1/5/1989	4 1/2	10.50	J-55	10.0	6,387.0

Cement

Description	Top Depth (ftKB)	Bottom Depth (ftKB)
SURFACE CASING CEMENT	10.0	222.0
PRODUCTION CASING CEMENT	5,696.0	6,387.0
Cement Squeeze	4,003.0	4,118.0

Tubing Components

Item Des	OD (in)	Wt (lb/ft)	Grade	Jts	Len (ft)	Btm (ftKB)	Btm (TVD) (ftKB)
Tubing	2 3/8	4.70	J-55	199	6,222.00	6,232.0	
Packer	3.8			1	2.00	6,234.0	

Rods & Pumps

Rod Description	Run Date	Set Depth (ftKB)
Rod	3/3/2006	6,150.0

Comment

Item Description	OD Nominal (in)	Joints	Length (ft)
Sucker Rods	3/4	246	6,140.00

Perforation Data

Zone	Bnch/St g	Entered Shot Total	Top (ftKB)	Btm (ftKB)	Date
D SAND, ORIGINAL HOLE		18	6,275.0	6,284.0	1/9/1989
D SAND, ORIGINAL HOLE		8	6,288.0	6,292.0	1/9/1989

Stimulations & Treatments

Date	Zone	Primary Job Type
7/18/1996	D SAND, ORIGINAL HOLE	DRILLING/COMPLETION - ORIGINAL
Technical Result	Tech Result Details	Tech Result Note

Comment

Other In Hole

Run Date	Des	OD (in)	Top (ftKB)	Btm (ftKB)
3/1/2006	Bridge Plug - Permanent	4	6,359.0	6,361.0

Well Name: LILLI UNIT 14-10

VERTICAL - ORIGINAL HOLE, 9/12/2012 3:28:51 PM

