

---

# **WPX ENERGY ROCKY MOUNTAIN LLC-EBUS**

---

**KP 43-21  
MAMM CREEK  
Garfield County , Colorado**

**Cement Surface Casing**  
**18-Mar-2012**

**Job Site Documents**

## The Road to Excellence Starts with Safety

|  |                                   |                         |                        |
|--|-----------------------------------|-------------------------|------------------------|
| Sold To #: 300721                            | Ship To #: 2904877                | Quote #:                | Sales Order #: 9360878 |
| Customer: WPX ENERGY ROCKY MOUNTAIN LLC-EBUS | Customer Rep: Duniho, Al          |                         |                        |
| Well Name: KP                                | Well #: 43-21                     | API/UWI #:              |                        |
| Field: MAMM CREEK                            | City (SAP): SILT                  | County/Parish: Garfield | State: Colorado        |
| Contractor: NABORS                           | Rig/Platform Name/Num: NABORS 573 |                         |                        |
| Job Purpose: Cement Surface Casing           |                                   |                         |                        |
| Well Type: Development Well                  | Job Type: Cement Surface Casing   |                         |                        |
| Sales Person: SCOTT, KYLE                    | Srv Supervisor: SLAUGHTER, JESSE  | MBU ID Emp #: 454315    |                        |

## Job Personnel

| HES Emp Name          | Exp Hrs | Emp #  | HES Emp Name          | Exp Hrs | Emp #  | HES Emp Name      | Exp Hrs | Emp #  |
|-----------------------|---------|--------|-----------------------|---------|--------|-------------------|---------|--------|
| BATH, KYLE Thomas     | 7       | 477632 | CASTILLO, FRANCISCO P | 7       | 513620 | ROMKEE, DALE Alan | 7       | 488215 |
| SLAUGHTER, JESSE Dean | 7       | 454315 |                       |         |        |                   |         |        |

## Equipment

| HES Unit # | Distance-1 way | HES Unit # | Distance-1 way | HES Unit # | Distance-1 way | HES Unit # | Distance-1 way |
|------------|----------------|------------|----------------|------------|----------------|------------|----------------|
| 10616651C  | 60 mile        | 10744549   | 60 mile        | 10867094   | 60 mile        | 10897925   | 60 mile        |
| 10995027   | 60 mile        | 11057893   | 60 mile        | 11583933   | 60 mile        | 11808827   | 60 mile        |

## Job Hours

| Date       | On Location Hours | Operating Hours | Date | On Location Hours | Operating Hours | Date | On Location Hours | Operating Hours |
|------------|-------------------|-----------------|------|-------------------|-----------------|------|-------------------|-----------------|
| 03-18-2012 | 7                 | 3               |      |                   |                 |      |                   |                 |

**TOTAL** Total is the sum of each column separately

## Job

| Formation Name         | Top      | Bottom            | Called Out    | Date            | Time  | Time Zone |
|------------------------|----------|-------------------|---------------|-----------------|-------|-----------|
| Formation Depth (MD)   |          |                   | On Location   | 17 - Mar - 2012 | 19:00 | MST       |
| Form Type              | BHST     |                   | Job Started   | 18 - Mar - 2012 | 00:00 | MST       |
| Job depth MD           | 1483. ft | Job Depth TVD     | Job Started   | 18 - Mar - 2012 | 04:37 | MST       |
| Water Depth            |          | Wk Ht Above Floor | Job Completed | 18 - Mar - 2012 | 05:39 | MST       |
| Perforation Depth (MD) | From     | To                | Departed Loc  | 18 - Mar - 2012 | 07:00 | MST       |

## Well Data

| Description | New / Used | Max pressure psig | Size in | ID in | Weight lbm/ft | Thread | Grade | Top MD ft | Bottom MD ft | Top TVD ft | Bottom TVD ft |
|-------------|------------|-------------------|---------|-------|---------------|--------|-------|-----------|--------------|------------|---------------|
|-------------|------------|-------------------|---------|-------|---------------|--------|-------|-----------|--------------|------------|---------------|

Sales/Rental/3<sup>rd</sup> Party (HES)

| Description                              | Qty | Qty uom | Depth | Supplier |
|--|-----|---------|-------|----------|
| PLUG,CMTG,TOP,9 5/8,HWE,8.16 MIN/9.06 MA | 1   | EA      |       |          |

## Tools and Accessories

| Type         | Size | Qty | Make | Depth | Type        | Size | Qty | Make | Depth | Type           | Size  | Qty | Make |
|--------------|------|-----|------|-------|-------------|------|-----|------|-------|----------------|-------|-----|------|
| Guide Shoe   |      |     |      |       | Packer      |      |     |      |       | Top Plug       | 9.625 | 1   | HES  |
| Float Shoe   |      |     |      |       | Bridge Plug |      |     |      |       | Bottom Plug    |       |     |      |
| Float Collar |      |     |      |       | Retainer    |      |     |      |       | SSR plug set   |       |     |      |
| Insert Float |      |     |      |       |             |      |     |      |       | Plug Container | 9.625 | 1   | HES  |
| Stage Tool   |      |     |      |       |             |      |     |      |       | Centralizers   |       |     |      |

## Miscellaneous Materials

| Gelling Agt   | Conc | Surfactant | Conc | Acid Type | Qty  | Conc | % |
|---------------|------|------------|------|-----------|------|------|---|
| Treatment Fld | Conc | Inhibitor  | Conc | Sand Type | Size | Qty  |   |

## Fluid Data

| Stage/Plug #: 1 |            |            |     |         |                        |              |                  |              |                        |
|-----------------|------------|------------|-----|---------|------------------------|--------------|------------------|--------------|------------------------|
| Fluid #         | Stage Type | Fluid Name | Qty | Qty uom | Mixing Density lbm/gal | Yield ft3/sk | Mix Fluid Gal/sk | Rate bbl/min | Total Mix Fluid Gal/sk |

Stage/Plug #: 1

| Stage/Plug #: 1                          |                    |                               |        |                                   |                        |                           |                  |              |                        |  |
|--|--------------------|-------------------------------|--------|-----------------------------------|------------------------|---------------------------|------------------|--------------|------------------------|--|
| Fluid #                                  | Stage Type         | Fluid Name                    | Qty    | Qty uom                           | Mixing Density lbm/gal | Yield ft <sup>3</sup> /sk | Mix Fluid Gal/sk | Rate bbl/min | Total Mix Fluid Gal/sk |  |
| 1  | Fresh Water        | FRESH WATER                   | 20.00  | bbl                               | 8.33                   | .0                        | .0               | 4            |                        |  |
| 2  | Lead Cement        | VERSACEM (TM) SYSTEM (452010) | 235.0  | sacks                             | 12.3                   | 2.38                      | 13.75            | 8            | 13.75                  |  |
| 13.75 Gal                                |                    | FRESH WATER                   |        |                                   |                        |                           |                  |              |                        |  |
| 3  | Tail Cement        | VERSACEM (TM) SYSTEM (452010) | 160.0  | sacks                             | 12.8                   | 2.11                      | 11.75            | 8            | 11.75                  |  |
| 11.75 Gal                                |                    | FRESH WATER                   |        |                                   |                        |                           |                  |              |                        |  |
| 4  | Displacement Fluid | FRESH WATER                   | 113.2  | bbl                               | 8.33                   | .0                        | .0               | 10           |                        |  |
| Calculated Values                        |                    | Pressures                     |        | Volumes                           |                        |                           |                  |              |                        |  |
| Displacement                             | 113.2              | Shut In: Instant              |        | Lost Returns                      | NO                     | Cement Slurry             | 160              | Pad          |                        |  |
| Top Of Cement                            | SURFACE            | 5 Min                         |        | Cement Returns                    | 30                     | Actual Displacement       | 113.2            | Treatment    |                        |  |
| Frac Gradient                            |                    | 15 Min                        |        | Spacers                           | 20                     | Load and Breakdown        |                  | Total Job    | 293                    |  |
| Rates                                    |                    |                               |        |                                   |                        |                           |                  |              |                        |  |
| Circulating                              |                    | Mixing                        | 8      | Displacement                      | 10                     | Avg. Job                  | 9                |              |                        |  |
| Cement Left In Pipe                      | Amount             | 0 ft                          | Reason | Shoe Joint                        |                        |                           |                  |              |                        |  |
| Frac Ring # 1 @                          | ID                 | Frac ring # 2 @               | ID     | Frac Ring # 3 @                   | ID                     | Frac Ring # 4 @           | ID               |              |                        |  |
| The Information Stated Herein Is Correct |                    |                               |        | Customer Representative Signature |                        |                           |                  |              |                        |  |

*The Road to Excellence Starts with Safety*

|   |  |                           |  |  |  |                               |                        |
|---|--|---------------------------|--|--|--|-------------------------------|------------------------|
| <b>Sold To #:</b> 300721                            |  | <b>Ship To #:</b> 2904877 |  | <b>Quote #:</b>                                  |  | <b>Sales Order #:</b> 9360878 |                        |
| <b>Customer:</b> WPX ENERGY ROCKY MOUNTAIN LLC-EBUS |  |                           |  | <b>Customer Rep:</b> Duniwoo, Al                 |  |                               |                        |
| <b>Well Name:</b> KP                                |  |                           | <b>Well #:</b> 43-21                     |  |  | <b>API/UWI #:</b>             |                        |
| <b>Field:</b> MAMM CREEK                            |  | <b>City (SAP):</b> SILT   |  | <b>County/Parish:</b> Garfield                   |  |                               | <b>State:</b> Colorado |
| <b>Legal Description:</b>                           |  |                           |  |  |  |                               |                        |
| <b>Lat:</b> N 0 deg. OR N 0 deg. 0 min. 0 secs.     |  |                           |  | <b>Long:</b> E 0 deg. OR E 0 deg. 0 min. 0 secs. |  |                               |                        |
| <b>Contractor:</b> NABORS                           |  |                           | <b>Rig/Platform Name/Num:</b> NABORS 573 |  |  |                               |                        |
| <b>Job Purpose:</b> Cement Surface Casing           |  |                           |  |  |  | <b>Ticket Amount:</b>         |                        |
| <b>Well Type:</b> Development Well                  |  |                           | <b>Job Type:</b> Cement Surface Casing   |  |  |                               |                        |
| <b>Sales Person:</b> SCOTT, KYLE                    |  |                           | <b>Srvc Supervisor:</b> SLAUGHTER, JESSE |  |  | <b>MBU ID Emp #:</b> 454315   |                        |

| Activity Description                  | Date/Time        | Cht # | Rate bbl/min | Volume bbl |       | Pressure psig |        | Comments   |
|---------------------------------------|------------------|-------|--------------|------------|-------|---------------|--------|--|
|                                       |                  |       |              | Stage      | Total | Tubing        | Casing |  |
| Call Out                              | 03/17/2012 19:00 |       |              |            |       |               |        | TD 1500 FT, TP 1483 FT, SHOE 44.05 FT, CSG 9 5/8 IN 32.3 LB/FT, HOLE 13 1/2 IN, MUD WT 9.9 PPG |
| Pre-Convoy Safety Meeting             | 03/17/2012 21:50 |       |              |            |       |               |        | WITH ALL HES PERSONNEL   |
| Crew Leave Yard                       | 03/17/2012 22:00 |       |              |            |       |               |        |  |
| Arrive At Loc                         | 03/18/2012 00:00 |       |              |            |       |               |        | RIG WAS RUNNING CASING UPON HES ARRIVAL  |
| Assessment Of Location Safety Meeting | 03/18/2012 03:30 |       |              |            |       |               |        | WITH ALL HES PERSONNEL   |
| Other                                 | 03/18/2012 03:40 |       |              |            |       |               |        | SPOT EQUIPMENT   |
| Pre-Rig Up Safety Meeting             | 03/18/2012 03:50 |       |              |            |       |               |        | WITH ALL HES PERSONNEL   |
| Rig-Up Equipment                      | 03/18/2012 04:00 |       |              |            |       |               |        |  |
| Pre-Job Safety Meeting                | 03/18/2012 04:30 |       |              |            |       |               |        | WITH ALL PERSONNEL ON LOCATION   |
| Start Job                             | 03/18/2012 04:37 |       |              |            |       |               |        |  |
| Other                                 | 03/18/2012 04:38 |       | 2            | 2          |       |               | 57.0   | FILL LINES WITH FRESH WATER  |
| Test Lines                            | 03/18/2012 04:39 |       |              |            |       |               |        | TESTED LINES TO 3259 PSI PRESSURE HOLDING  |
| Pump Spacer 1                         | 03/18/2012 04:44 |       | 4            | 20         |       |               | 151.0  | FRESH WATER  |
| Pump Lead Cement                      | 03/18/2012 04:53 |       | 8            | 99.6       |       |               | 330.0  | 235 SKS AT 12.3 PPG 2.38FT3/SK, 13.75 GAL/SK   |
| Activity Description                  | Date/Time        | Cht   | Rate bbl/min | Volume bbl |       | Pressure psig |        | Comments   |

Sold To # : 300721

Ship To # :2904877

Quote # :

Sales Order # :

9360878

SUMMIT Version: 7.3.0021

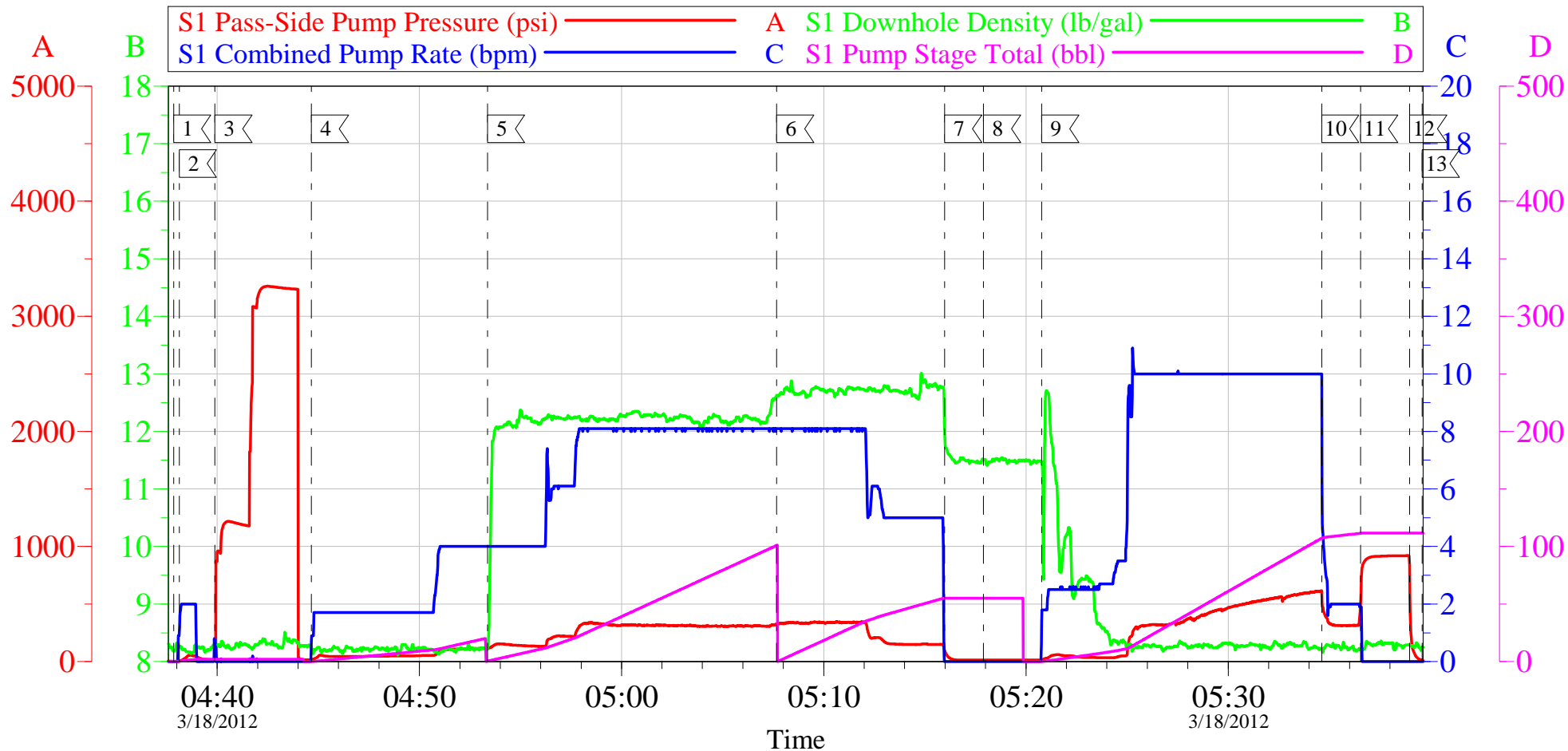
Sunday, March 18, 2012 06:15:00

## Cementing Job Log

|                             |                     | # |    | Stage | Total | Tubing | Casing |  |
|-----------------------------|---------------------|---|----|-------|-------|--------|--------|--|
| Pump Tail Cement            | 03/18/2012<br>05:07 |   | 8  | 60.1  |       |        | 348.0  | 160 SKS AT 12.8 PPG,<br>2.11 FT3/SK, 11.75<br>GAL/SK   |
| Shutdown                    | 03/18/2012<br>05:15 |   |    |       |       |        |        |  |
| Drop Top Plug               | 03/18/2012<br>05:17 |   |    |       |       |        |        | PLUG LAUNCHED  |
| Pump Displacement           | 03/18/2012<br>05:20 |   | 10 | 103.2 |       |        | 616.0  | FRESH WATER  |
| Slow Rate                   | 03/18/2012<br>05:34 |   | 2  | 10    |       |        | 325.0  | SLOW RATE 10 BBLs<br>PRIOR TO<br>CALCULATED<br>DISPLACEMENT  |
| Bump Plug                   | 03/18/2012<br>05:36 |   | 2  |       | 113.2 |        | 920.0  | PLUG BUMPED  |
| Check Floats                | 03/18/2012<br>05:38 |   |    |       |       |        |        | FLOATS HOLDING.<br>HES RETURNED 1/2<br>BBL H2O TO PUMP   |
| End Job                     | 03/18/2012<br>05:39 |   |    |       |       |        |        | PIPE WAS STATIC<br>DURING JOB, GOOD<br>CIRCULATION<br>THROUGHOUT JOB.<br>HES RETURNED 30<br>BBL CEMENT TO<br>SURFACE |
| Pre-Rig Down Safety Meeting | 03/18/2012<br>05:45 |   |    |       |       |        |        | WITH ALL HES<br>PERSONNEL  |
| Rig-Down Equipment          | 03/18/2012<br>05:50 |   |    |       |       |        |        |  |
| Pre-Convoy Safety Meeting   | 03/18/2012<br>06:50 |   |    |       |       |        |        | WITH ALL HES<br>PERSONNEL  |
| Crew Leave Location         | 03/18/2012<br>07:00 |   |    |       |       |        |        |  |
| Comment                     | 03/18/2012<br>07:01 |   |    |       |       |        |        | THANK YOU FOR<br>USING HALLIBURTON<br>CEMENT<br>DEPARTMENT. JESSE<br>SLAUGHTER AND<br>CREW.                          |

# WILLIAMS KP 43-21

9 5/8 SURFACE



## Local Event Log

|                   |          |                    |          |                     |          |
|-------------------|----------|--------------------|----------|---------------------|----------|
| 1 START JOB       | 04:37:51 | 2 PRIME LINES      | 04:38:08 | 3 TEST LINES        | 04:39:53 |
| 4 PUMP H2O SPACER | 04:44:40 | 5 PUMP LEAD CEMENT | 04:53:22 | 6 PUMP TAIL CEMENT  | 05:07:40 |
| 7 SHUTDOWN        | 05:15:59 | 8 DROP TOP PLUG    | 05:17:54 | 9 PUMP DISPLACEMENT | 05:20:47 |
| 10 SLOW RATE      | 05:34:37 | 11 BUMP PLUG       | 05:36:33 | 12 CHECK FLOATS     | 05:38:58 |
| 13 END JOB        | 05:39:36 |                    |          |                     |          |

Customer: WILLIAMS  
Well Description: KP 43-21  
Customer Rep: AL DUNIHO

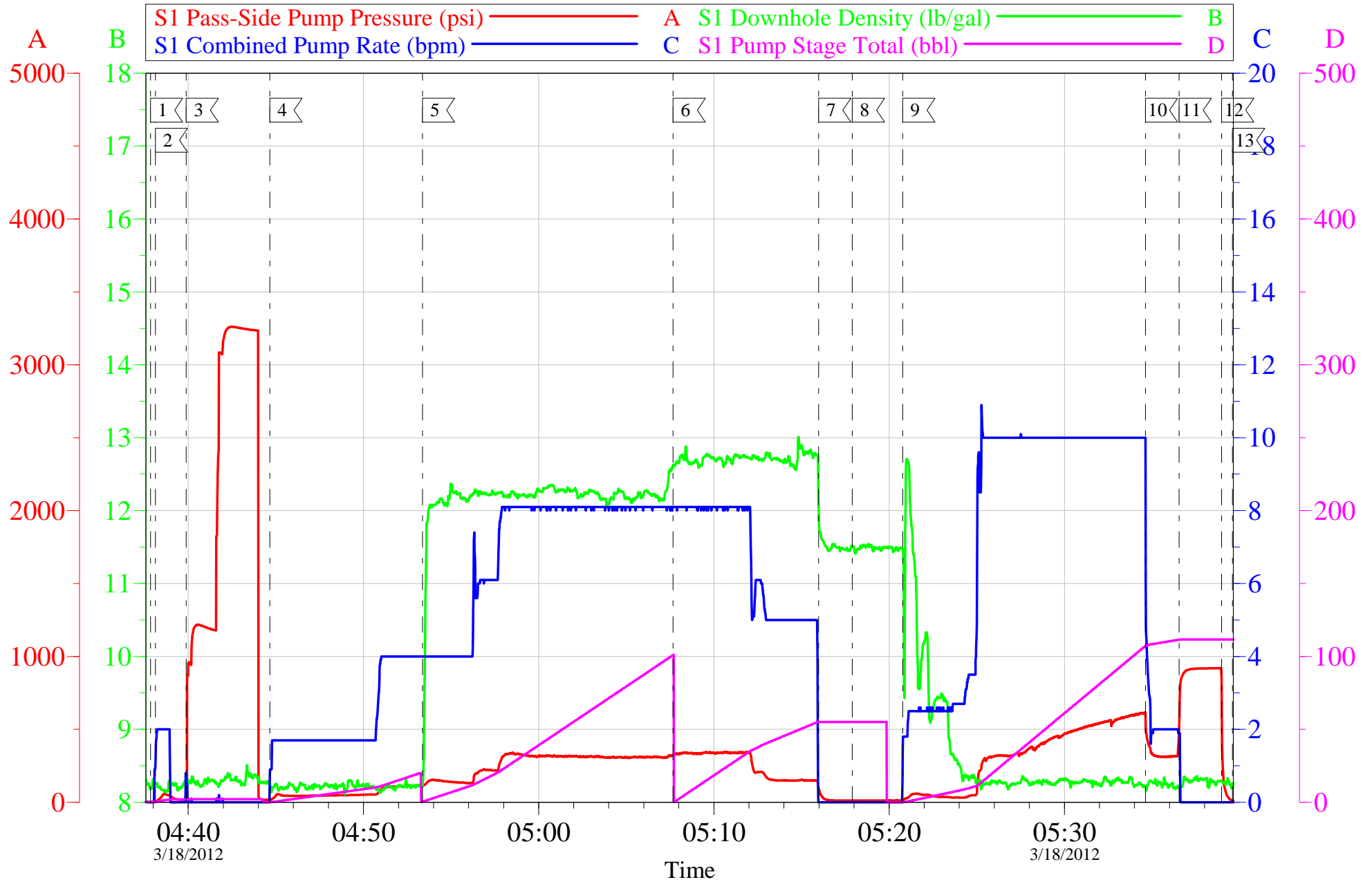
Job Date: 18-Mar-2012  
Job Type: SURFACE  
Cement Supervisor: JESSE SLAUGHTER

Sales Order #: 9360878  
ADC Used: YES  
Elite #4: KYLE BATH

OptiCem v6.4.10  
18-Mar-12 05:49

# WILLIAMS KP 43-21

9 5/8 SURFACE



Customer: WILLIAMS  
Well Description: KP 43-21  
Customer Rep: AL DUNIHO

Job Date: 18-Mar-2012  
Job Type: SURFACE  
Cement Supervisor: JESSE SLAUGHTER

Sales Order #: 9360878  
ADC Used: YES  
Elite #4: KYLE BATH

OptiCem v6.4.10  
18-Mar-12 05:53

# HALLIBURTON

## Water Analysis Report

Company: WILLIAMS PRODUCTION

Submitted by: JESSE SLAUGHTER

Attention: LAB

Lease KP

Well # 43-21

Date: 3/18/2012

Date Rec.:

S.O.# 9360878

Job Type: SURFACE

|                             |              |                         |
|-----------------------------|--------------|-------------------------|
| Specific Gravity            | <i>MAX</i>   | <b>1</b>                |
| pH                          | <i>8</i>     | <b>6</b>                |
| Potassium (K)               | <i>5000</i>  | <b>250</b> Mg / L       |
| Calcium (Ca)                | <i>500</i>   | <b>120</b> Mg / L       |
| Iron (FE2)                  | <i>300</i>   | <b>0</b> Mg / L         |
| Chlorides (Cl)              | <i>3000</i>  | <b>0</b> Mg / L         |
| Sulfates (SO <sub>4</sub> ) | <i>1500</i>  | <b>UNDER 200</b> Mg / L |
| Chlorine (Cl <sub>2</sub> ) |              | <b>0</b> Mg / L         |
| Temp                        | <i>40-80</i> | <b>55</b> Deg           |
| Total Dissolved Solids      |              | <b>200</b> Mg / L       |

Respectfully: JESSE SLAUGHTER

Title: CEMENTING SUPERVISOR

Location: Grand Junction, CO

NOTICE:

This report is limited to the described sample tested. Any person using or relying on this report agrees that Halliburton shall not be liable for any loss or damage whether due to act or omission resulting from such report or its use.



|  |  |  |
|--|--|--|
| <b>Sales Order #:</b><br>9360878                       | <b>Line Item:</b><br>10                          | <b>Survey Conducted Date:</b><br>3/18/2012                       |
| <b>Customer:</b><br>WPX ENERGY ROCKY MOUNTAIN LLC-EBUS |  | <b>Job Type (BOM):</b><br>CMT SURFACE CASING BOM                 |
| <b>Customer Representative:</b><br>AL DUNIHO           |  | <b>API / UWI: (leave blank if unknown)</b><br>AFEYCYDGY4JB1CGCAA |
| <b>Well Name:</b><br>KP                                |  | <b>Well Number:</b><br>43-21                                     |
| <b>Well Type:</b><br>Development Well                  | <b>Well Country:</b><br>United States of America |  |
| <b>H2S Present:</b><br>No                              | <b>Well State:</b><br>Colorado                   | <b>Well County:</b><br>Garfield                                  |

Dear Customer,

We hope that you were satisfied with the service quality of this job performed by Halliburton. It is the aim of our management and service personnel to deliver equipment and service of a standard unmatched in the service sector of the energy industry.

Please take the time to let us know if our performance met with your satisfaction. Please be as critical as possible to ensure we constantly improve our service. Your comments are of great value to us and are intended for the exclusive use of Halliburton.

### CUSTOMER SATISFACTION SURVEY

| CATEGORY                | CUSTOMER SATISFACTION RESPONSE                                 |                           |
|-------------------------|--|---------------------------|
| Survey Conducted Date   | The date the survey was conducted                              | 3/18/2012                 |
| Survey Interviewer      | The survey interviewer is the person who initiated the survey. | JESSE SLAUGHTER (HB21762) |
| Customer Participation  | Did the customer participate in this survey? (Y/N)             | Yes                       |
| Customer Representative | Enter the Customer representative name                         | AL DUNIHO                 |
| HSE                     | Was our HSE performance satisfactory? Circle Y or N            | Yes                       |
| Equipment               | Were you satisfied with our Equipment? Circle Y or N           | Yes                       |
| Personnel               | Were you satisfied with our people? Circle Y or N              | Yes                       |
| Customer Comment        | Customer's Comment   | GOOD JOB MEN              |

CUSTOMER SIGNATURE

|  |  |  |
|--|--|--|
| <b>Sales Order #:</b><br>9360878                       | <b>Line Item:</b><br>10                          | <b>Survey Conducted Date:</b><br>3/18/2012                       |
| <b>Customer:</b><br>WPX ENERGY ROCKY MOUNTAIN LLC-EBUS |  | <b>Job Type (BOM):</b><br>CMT SURFACE CASING BOM                 |
| <b>Customer Representative:</b><br>AL DUNIHO           |  | <b>API / UWI: (leave blank if unknown)</b><br>AFEYCYDGY4JB1CGCAA |
| <b>Well Name:</b><br>KP                                |  | <b>Well Number:</b><br>43-21                                     |
| <b>Well Type:</b><br>Development Well                  | <b>Well Country:</b><br>United States of America |  |
| <b>H2S Present:</b><br>No                              | <b>Well State:</b><br>Colorado                   | <b>Well County:</b><br>Garfield                                  |

*KEY PERFORMANCE INDICATORS*

| General   |           |
|---|-----------|
| <b>Survey Conducted Date</b><br>The date the survey was conducted | 3/18/2012 |

| Cementing KPI Survey   |                         |
|--|-------------------------|
| <b>Type of Job</b><br>Select the type of job. (Cementing or Non-Cementing)   | 0                       |
| <b>Select the Maximum Deviation range for this Job</b><br>What is the highest deviation for the job you just completed? This may not be the maximum well deviation.  | Vertical                |
| <b>Total Operating Time (hours)</b><br>Total Operating Hours Including Rig-up, Pumping, Rig-down. Enter in decimal format.   | 3                       |
| <b>HSE Incident, Accident, Injury</b><br>HSE Incident, Accident, Injury. This should be recordable incidents only.   | No                      |
| <b>Was the job purpose achieved?</b><br>Was the job delivered correctly as per customer agreed design?   | Yes                     |
| <b>Operating Hours (Pumping Hours)</b><br>Total number of hours pumping fluid on this job. Enter in decimal format.  | 1.5                     |
| <b>Customer Non-Productive Rig Time (hrs)</b><br>Lost time due to Halliburton in the start, execution, or completion of an ordered service or product, or delays in a follow-on service. Enter in decimal format. 0 if none. | 0                       |
| <b>Type of Rig Classification Job Was Performed</b><br>Type Of Rig (classification) Job Was Performed On   | Drilling Rig (Portable) |
| <b>Number Of JSAs Performed</b><br>Number Of Jsas Performed  | 6                       |
| <b>Number of Unplanned Shutdowns</b><br>Unplanned shutdown is when injection stops for any period of time.   | 0                       |
| <b>Was this a Primary Cement Job (Yes / No)</b>  | Yes                     |

|  |  |  |
|--|--|--|
| <b>Sales Order #:</b><br>9360878                       | <b>Line Item:</b><br>10                          | <b>Survey Conducted Date:</b><br>3/18/2012                       |
| <b>Customer:</b><br>WPX ENERGY ROCKY MOUNTAIN LLC-EBUS |  | <b>Job Type (BOM):</b><br>CMT SURFACE CASING BOM                 |
| <b>Customer Representative:</b><br>AL DUNIHO           |  | <b>API / UWI: (leave blank if unknown)</b><br>AFEYCYDGY4JB1CGCAA |
| <b>Well Name:</b><br>KP                                |  | <b>Well Number:</b><br>43-21                                     |
| <b>Well Type:</b><br>Development Well                  | <b>Well Country:</b><br>United States of America |  |
| <b>H2S Present:</b><br>No                              | <b>Well State:</b><br>Colorado                   | <b>Well County:</b><br>Garfield                                  |

|  |     |
|--|-----|
| Primary Cement Job= Casing job, Liner job, or Tie-back job.  |     |
| <b>Did We Run Wiper Plugs?</b><br>Did We Run Top And Bottom Casing Wiper Plugs?  | Top |
| <b>Mixing Density of Job Stayed in Designed Density Range (0-100%)</b><br>Density Range defined as +/- .20 ppg. Calculation: Total BBLs cement mixed at designed density divided by total BBLs of cement multiplied by 100       | 98  |
| <b>Was Automated Density Control Used?</b><br>Was Automated Density Control (ADC) Used ?   | Yes |
| <b>Pump Rate (percent) of Job Stayed At Designed Pump Rate</b><br>Pump Rate range defined as +/- 1bbl/min. Calculation: Total BBLs of fluid pumped at the designed rate divided by Total BBLs of fluid pumped, multiplied by 100 | 98  |
| <b>Nbr of Remedial Sqz Jobs Rqd - Competition</b><br>Number Of Remedial Squeeze Jobs Required After Primary Job Performed By Competition   | 0   |
| <b>Nbr of Remedial Plug Jobs Rqd - HES</b><br>Number Of Remedial Plug Jobs Needed After Primary Plug Pumped By HES   | 0   |
| <b>Nbr of Remedial Sqz Jobs Rqd - HES</b><br>Number Of Remedial Squeeze Jobs Required After Primary Job Performed By HES   | 0   |