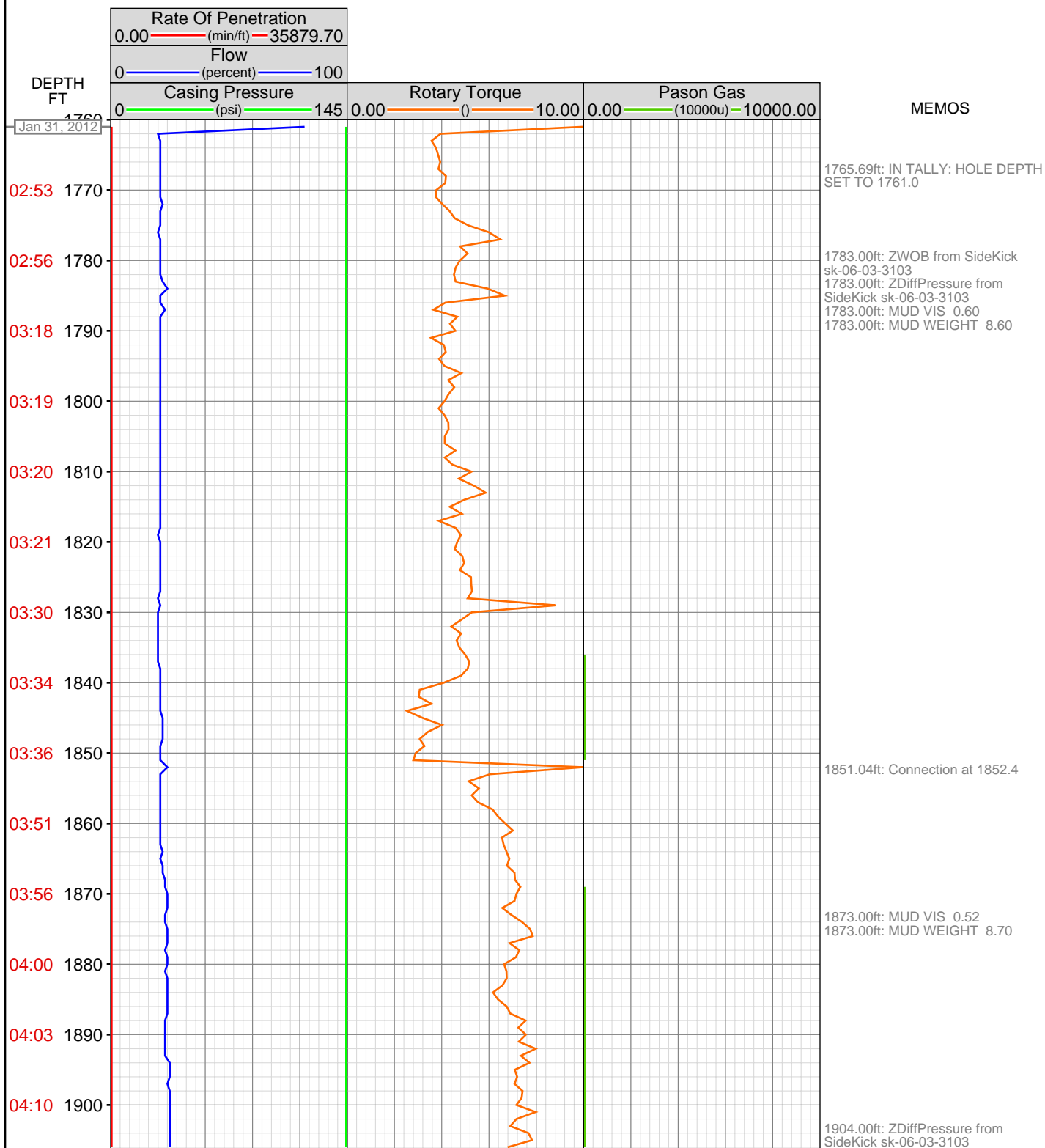


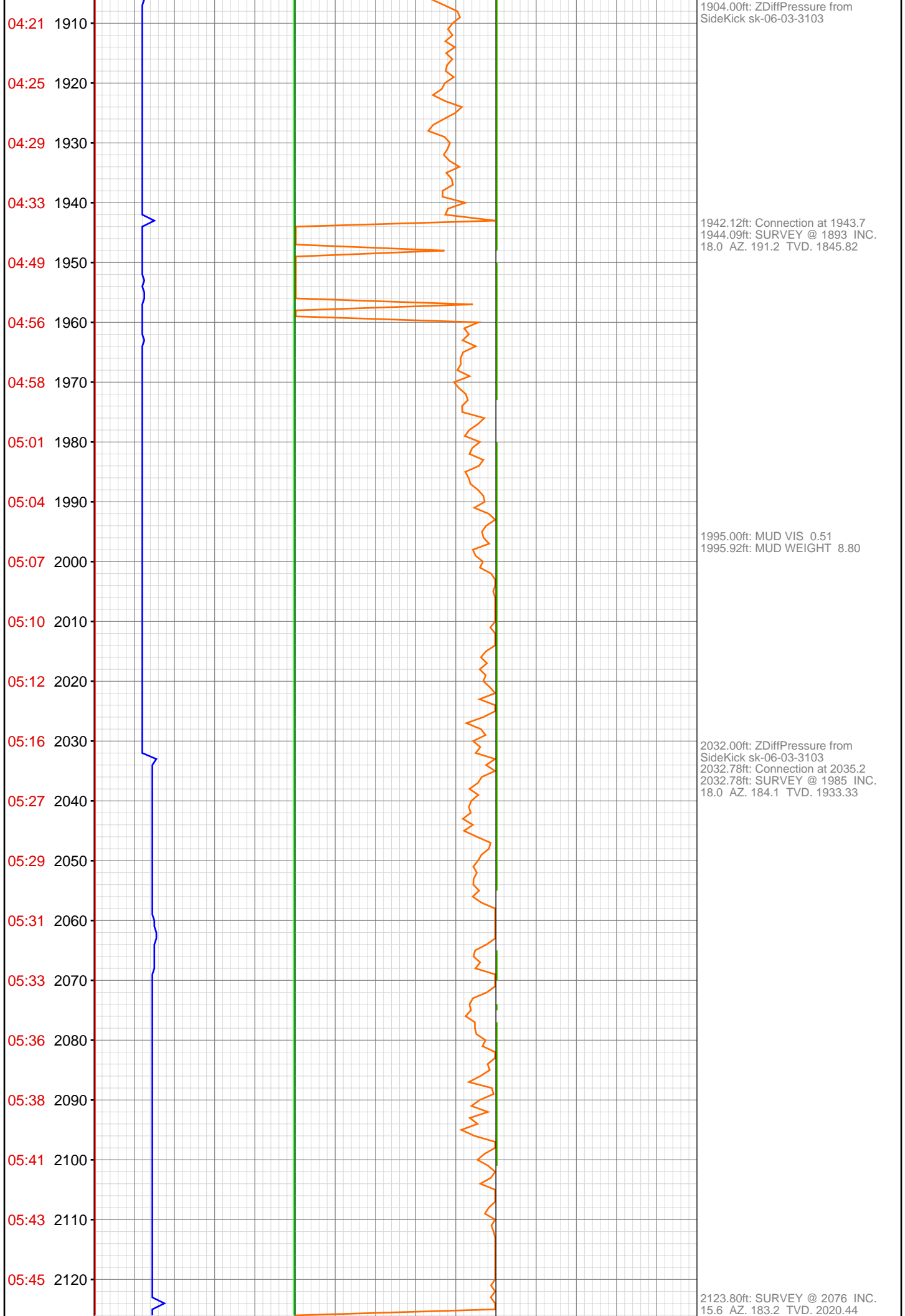
# DataHub EDR Log

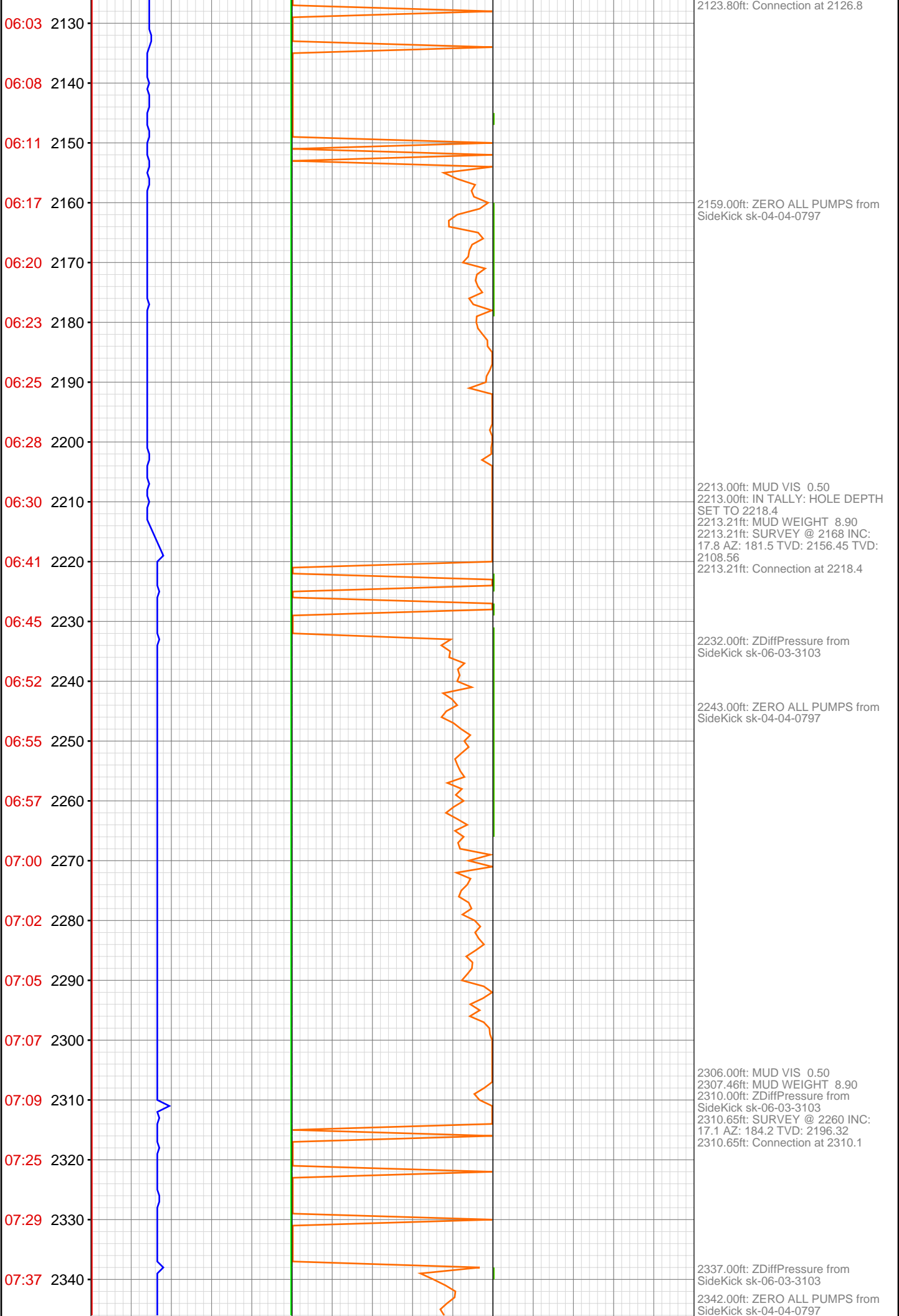
Tue Feb 07, 2012 09:11:28  
Well Dossier 1327972595  
Marilyn Tucker

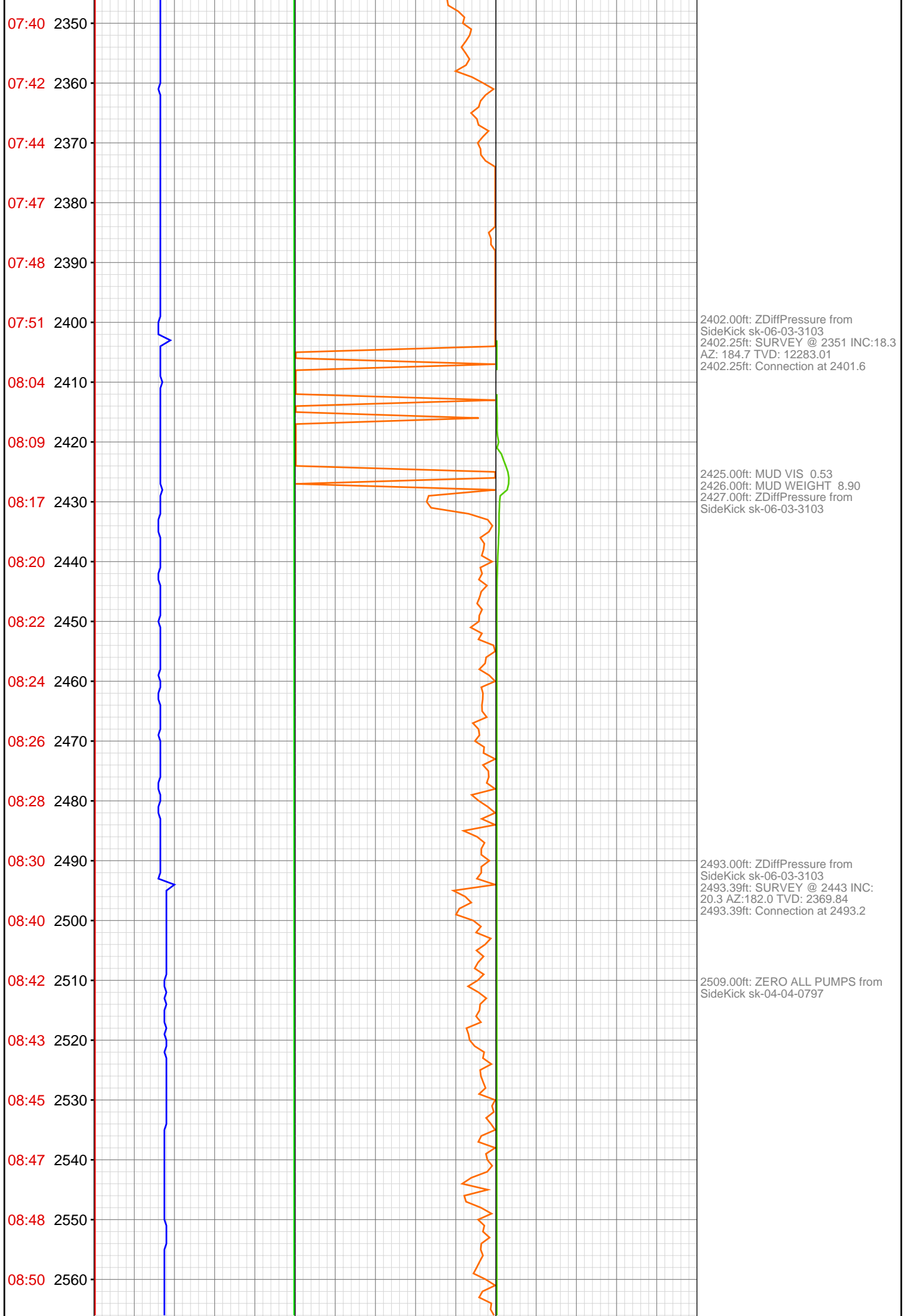
**OPERATOR:** EnCana Oil & Gas (USA), Inc.  
**WELL:** NP EF01F-34 P27 595 PRODUCTION  
**FIELD:**  
**LOCATION:** QTR QTR SESE SEC 27 TWP 5S RNG 95W REE  
**COUNTRY:** USA  
**RIG:** Pat-UTI 303

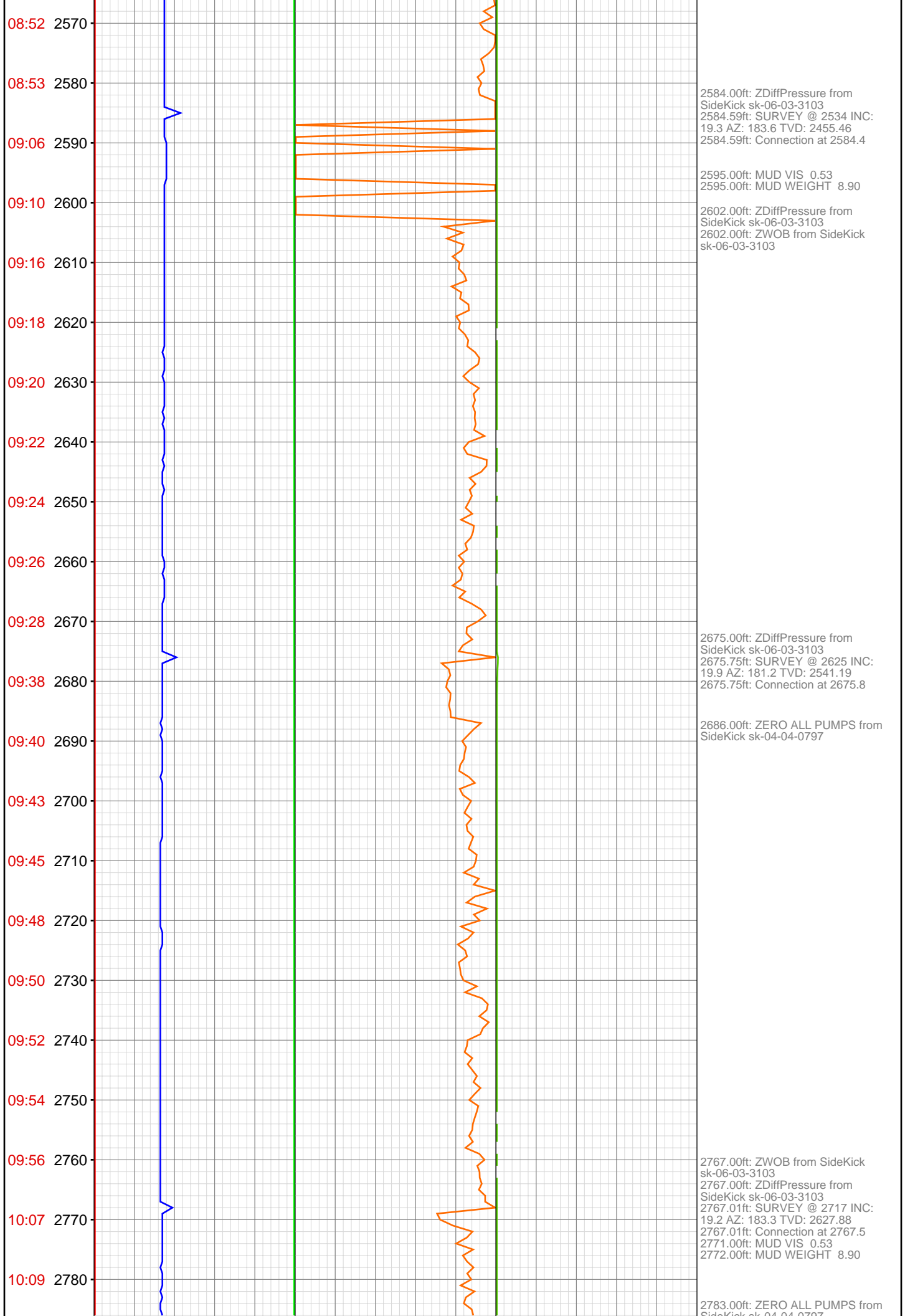
**CONTRACTOR:** Patterson-UTI Drilling Company  
**UNIQUE WELL ID:** 05-045-20297-0000  
**SPUD DATE:** Jan 31, 2012 04:00  
**RELEASE DATE:** Feb 06, 2012 02:00











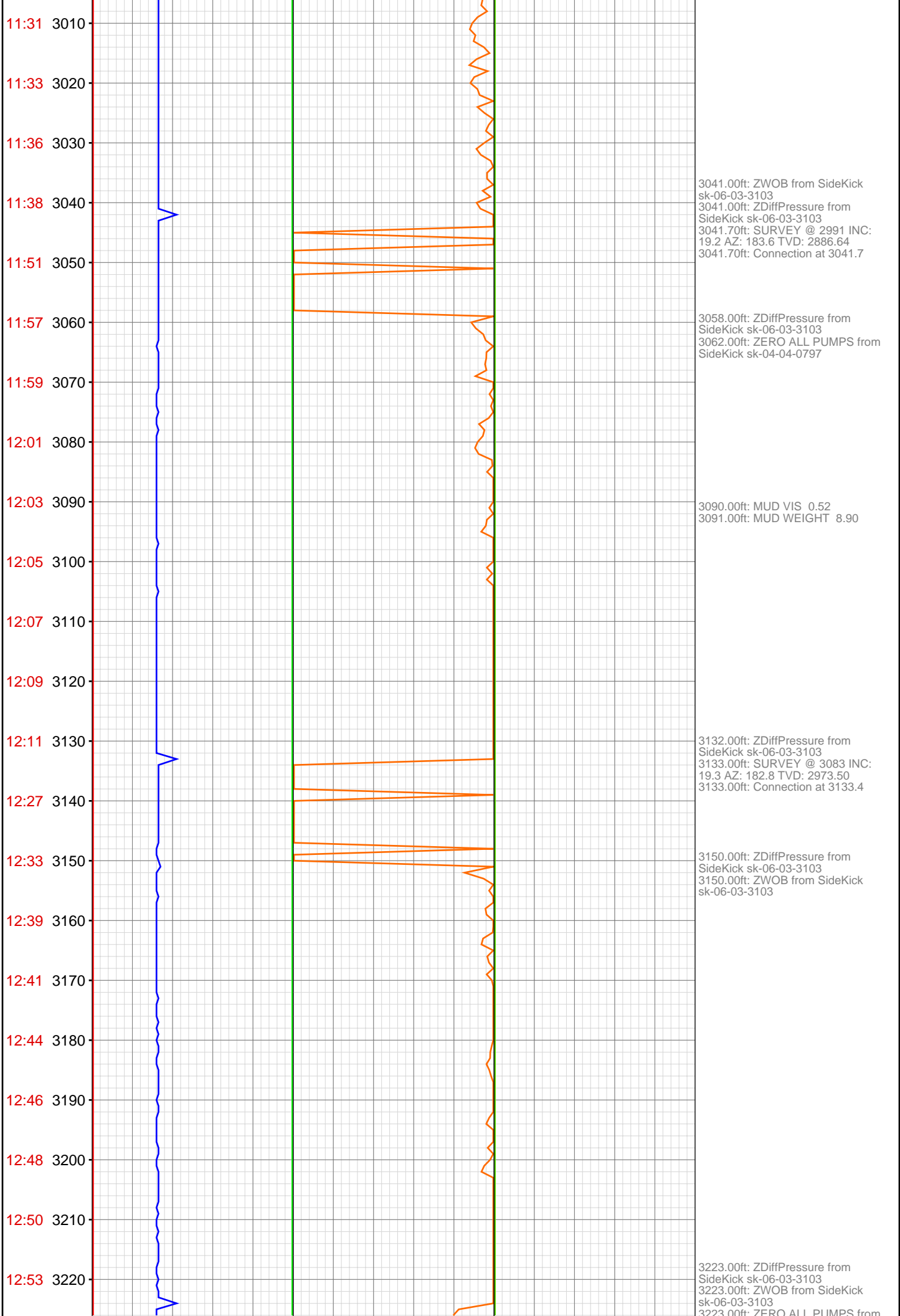
10:11 2790  
10:14 2800  
10:16 2810  
10:18 2820  
10:20 2830  
10:23 2840  
10:25 2850  
10:37 2860  
10:44 2870  
10:50 2880  
10:53 2890  
10:54 2900  
10:56 2910  
10:58 2920  
11:00 2930  
11:02 2940  
11:11 2950  
11:15 2960  
11:22 2970  
11:25 2980  
11:27 2990  
11:29 3000

2858.00ft: ZWOB from SideKick  
sk-06-03-3103  
2858.00ft: ZDiffPressure from  
SideKick sk-06-03-3103  
2858.27ft: SURVEY @ 2808 INC:  
18.8 AZ: 181.7 TVD: 2713.93  
2858.27ft: Connection at 2858.9

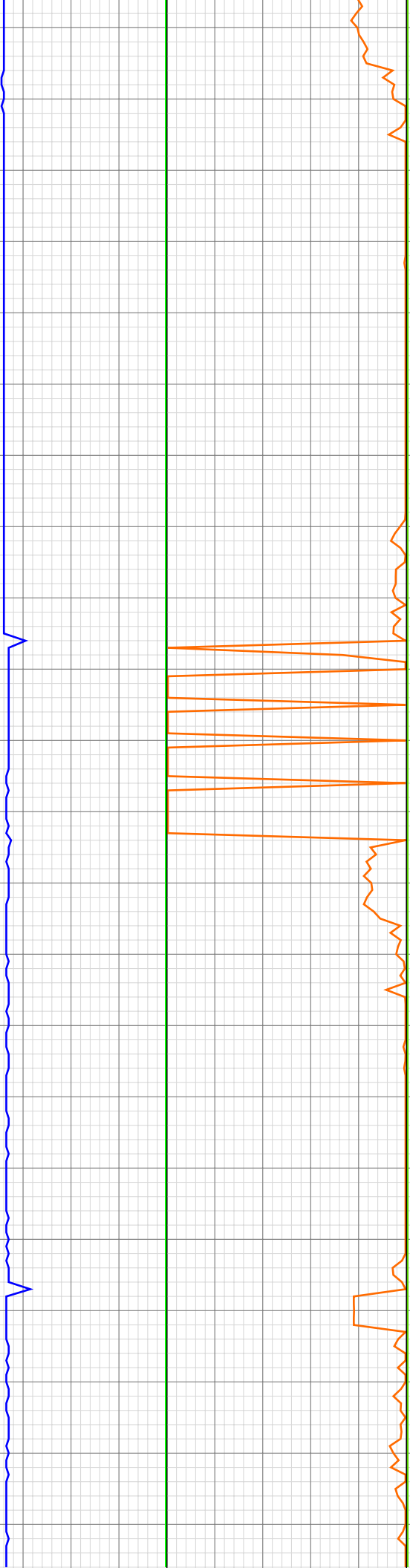
2876.00ft: ZDiffPressure from  
SideKick sk-06-03-3103  
2879.00ft: ZERO ALL PUMPS from  
SideKick sk-04-04-0797

2948.00ft: MUD VIS 0.53  
2948.00ft: ZDiffPressure from  
SideKick sk-06-03-3103  
2948.72ft: MUD WEIGHT 8.90  
2948.72ft: Connection at 2950.4  
2951.00ft: IN TALLY: HOLE DEPTH  
SET TO 2950.4

2965.00ft: ZWOB from SideKick  
sk-06-03-3103  
2965.00ft: ZDiffPressure from  
SideKick sk-06-03-3103  
2965.34ft: SURVEY @ 2900 INC:  
19.6 AZ: 180.9 TVD: 2800.81



13:03 3230  
13:06 3240  
13:08 3250  
13:11 3260  
13:13 3270  
13:15 3280  
13:18 3290  
13:20 3300  
13:22 3310  
13:35 3320  
13:41 3330  
13:45 3340  
13:50 3350  
13:53 3360  
13:56 3370  
13:59 3380  
14:02 3390  
14:04 3400  
14:13 3410  
14:15 3420  
14:17 3430  
14:19 3440



SideKick sk-04-04-0797  
3223.96ft: Connection at 3225.1  
3223.96ft: SURVEY @ 3175 INC: AZ:  
186.6 TVD: 3060.31

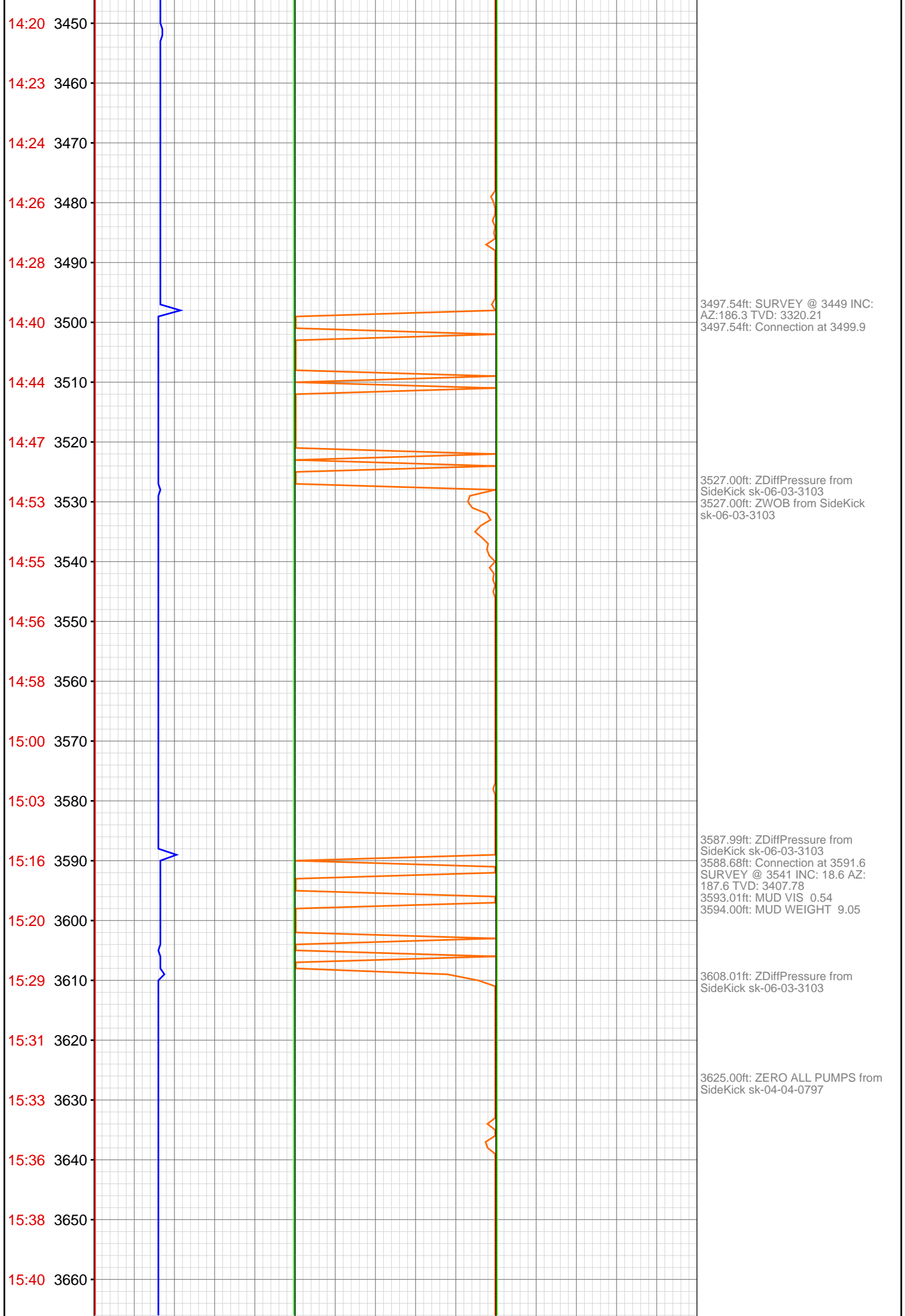
3314.99ft: ZDiffPressure from  
SideKick sk-06-03-3103  
3315.03ft: SURVEY @ 3266 INC:  
17.8 AZ: 187.1 TVD: 3146.55

3327.82ft: RIG SERVICE

3343.01ft: ZDiffPressure from  
SideKick sk-06-03-3103  
3343.60ft: ZWOB from SideKick  
sk-06-03-3103

3406.00ft: MUD VIS 0.52  
3406.00ft: MUD WEIGHT 9.05  
3406.00ft: ZDiffPressure from  
SideKick sk-06-03-3103  
3406.00ft: ZWOB from SideKick  
sk-06-03-3103  
3406.30ft: Connection at 3408.2  
3406.30ft: SURVEY @ 3358 INC:  
19.3 AZ: 186.5 TVD: 3233.77  
3412.30ft: ZERO ALL PUMPS from  
SideKick sk-04-04-0797





15:42 3670  
16:08 3680  
16:13 3690  
16:17 3700  
16:21 3710  
16:26 3720  
16:28 3730  
16:30 3740  
16:32 3750  
16:34 3760  
16:35 3770  
16:45 3780  
16:48 3790  
16:49 3800  
16:52 3810  
16:54 3820  
16:56 3830  
16:58 3840  
16:59 3850  
17:01 3860  
17:14 3870  
17:19 3880



3679.00ft: MUD VIS 0.54  
3679.00ft: MUD WEIGHT 9.05  
3679.89ft: Connection at 3683.2  
SURVEY @ 3633 INC: 18.2 AZ:  
183.5 TVD: 3495.08

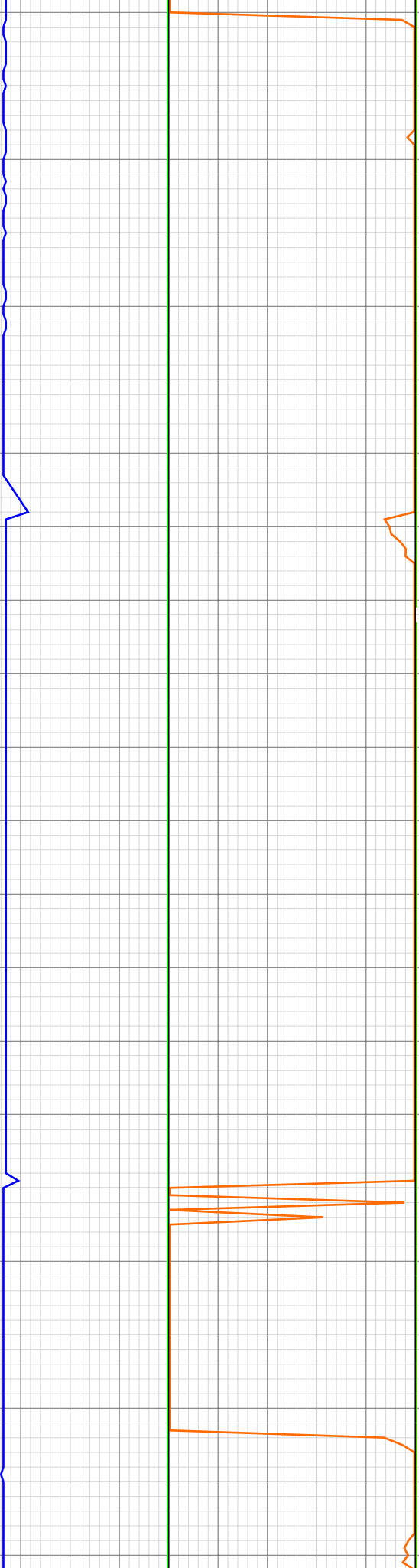
3710.99ft: ZDiffPressure from  
SideKick sk-06-03-3103

3771.00ft: ZDiffPressure from  
SideKick sk-06-03-3103  
3771.00ft: ZWOB from SideKick  
sk-06-03-3103  
3771.03ft: Connection at 3774.8  
3771.03ft: SURVEY @ 3724 INC:  
19.4 AZ: 184.4 TVD: 3581.22  
3775.00ft: ZERO ALL PUMPS from  
SideKick sk-04-04-0797

3849.02ft: MUD VIS 0.54  
3849.02ft: MUD WEIGHT 9.05

3862.24ft: Connection at 3866.2  
3862.24ft: SURVEY @ 3816 INC:  
18.0 AZ: 186.4 TVD: 3668.37

17:26 3890  
17:29 3900  
17:31 3910  
17:33 3920  
17:35 3930  
17:37 3940  
17:39 3950  
17:48 3960  
17:50 3970  
17:53 3980  
17:55 3990  
17:56 4000  
17:59 4010  
18:01 4020  
18:03 4030  
18:05 4040  
18:15 4050  
18:20 4060  
18:26 4070  
18:31 4080  
18:37 4090  
18:39 4100



3889.99ft: ZWOB from SideKick  
sk-06-03-3103  
3889.99ft: ZDiffPressure from  
SideKick sk-06-03-3103

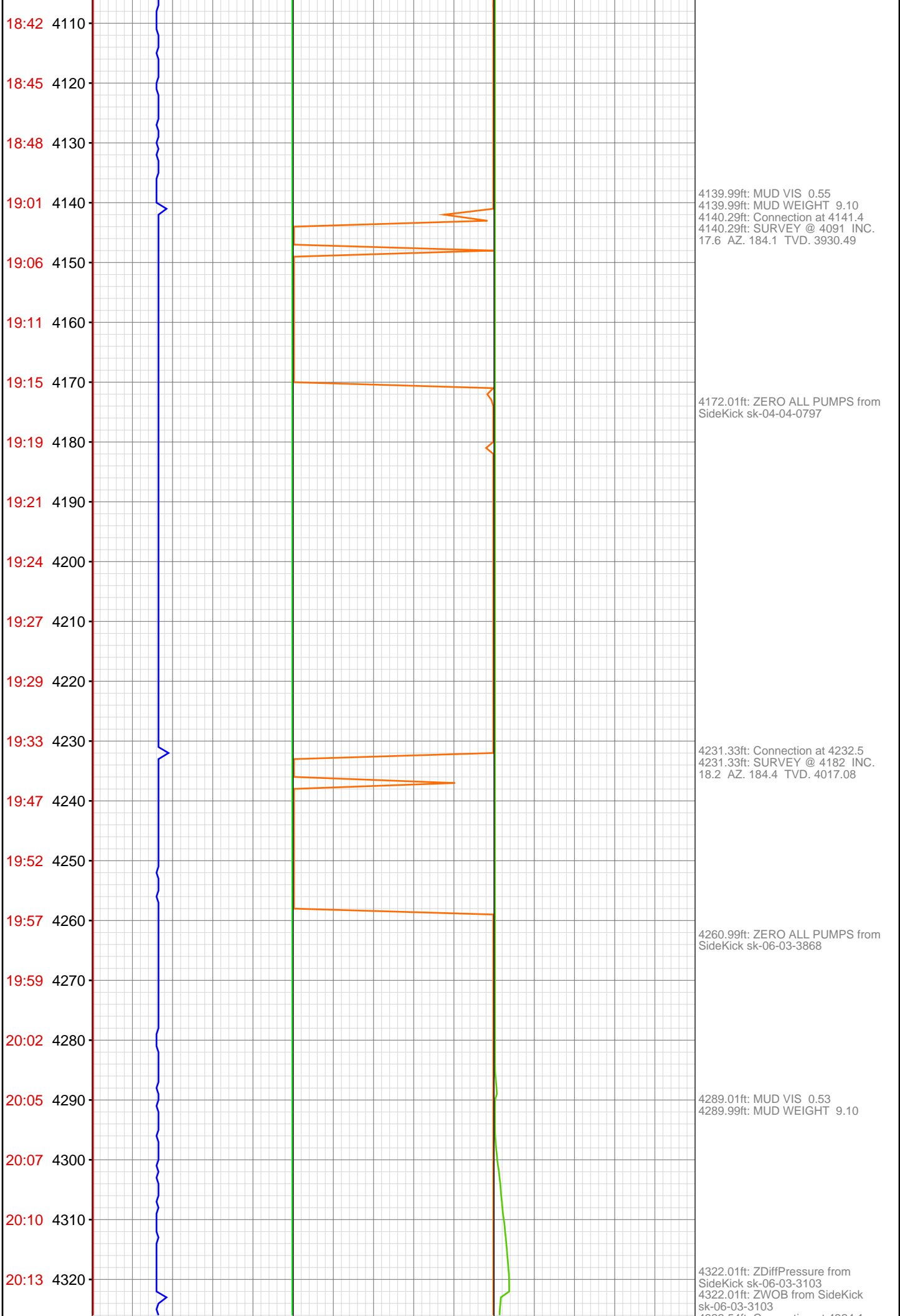
3902.00ft: ZERO ALL PUMPS from  
SideKick sk-04-04-0797

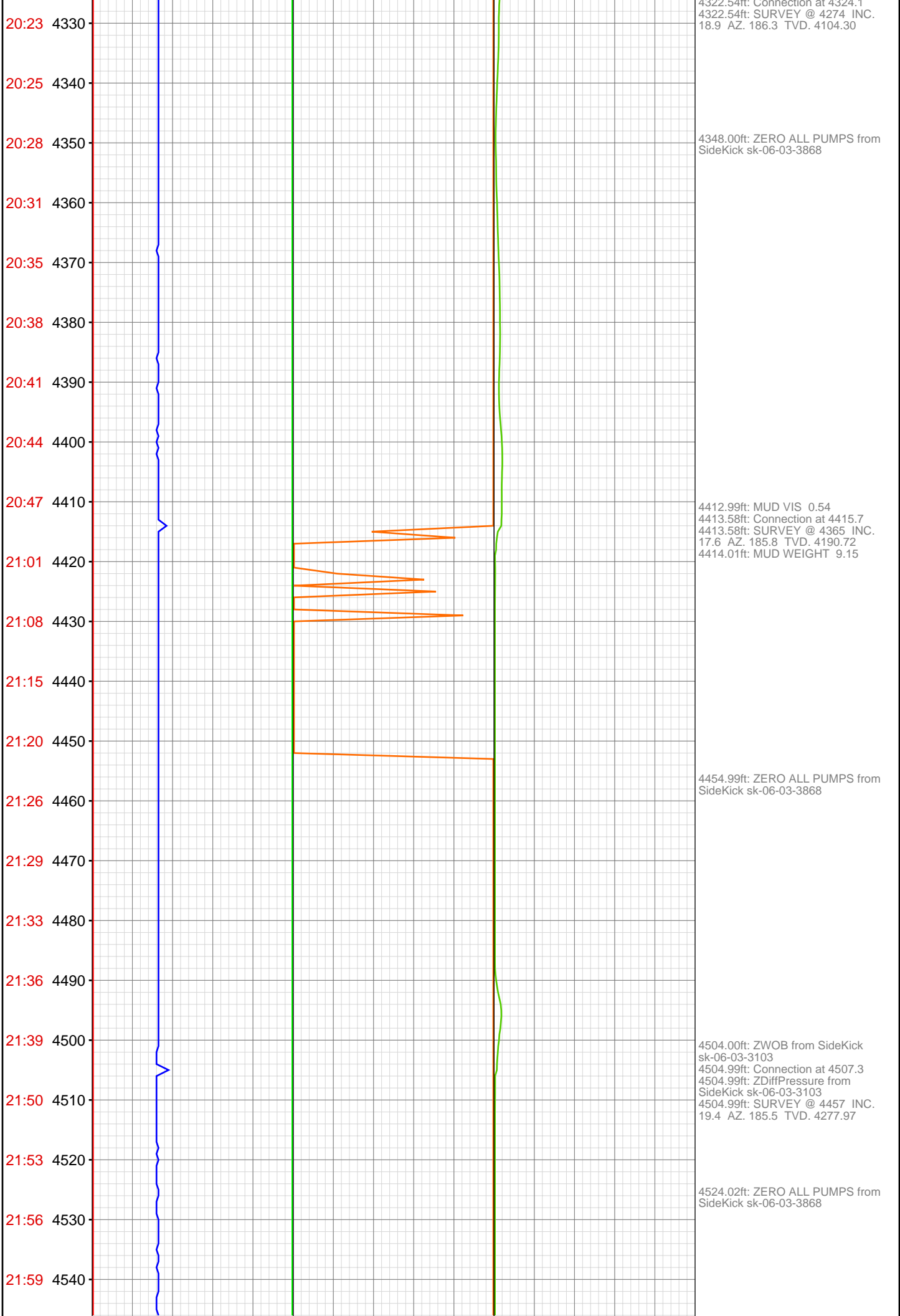
3952.99ft: ZDiffPressure from  
SideKick sk-06-03-3103  
3952.99ft: ZWOB from SideKick  
sk-06-03-3103  
3953.54ft: SURVEY @ 3907 INC.  
18.4 AZ. 183.1 TVD. 3754.82  
3958.37ft: Connection at 3957.9  
3960.60ft: IN TALLY: HOLE DEPTH  
SET TO 3957.9

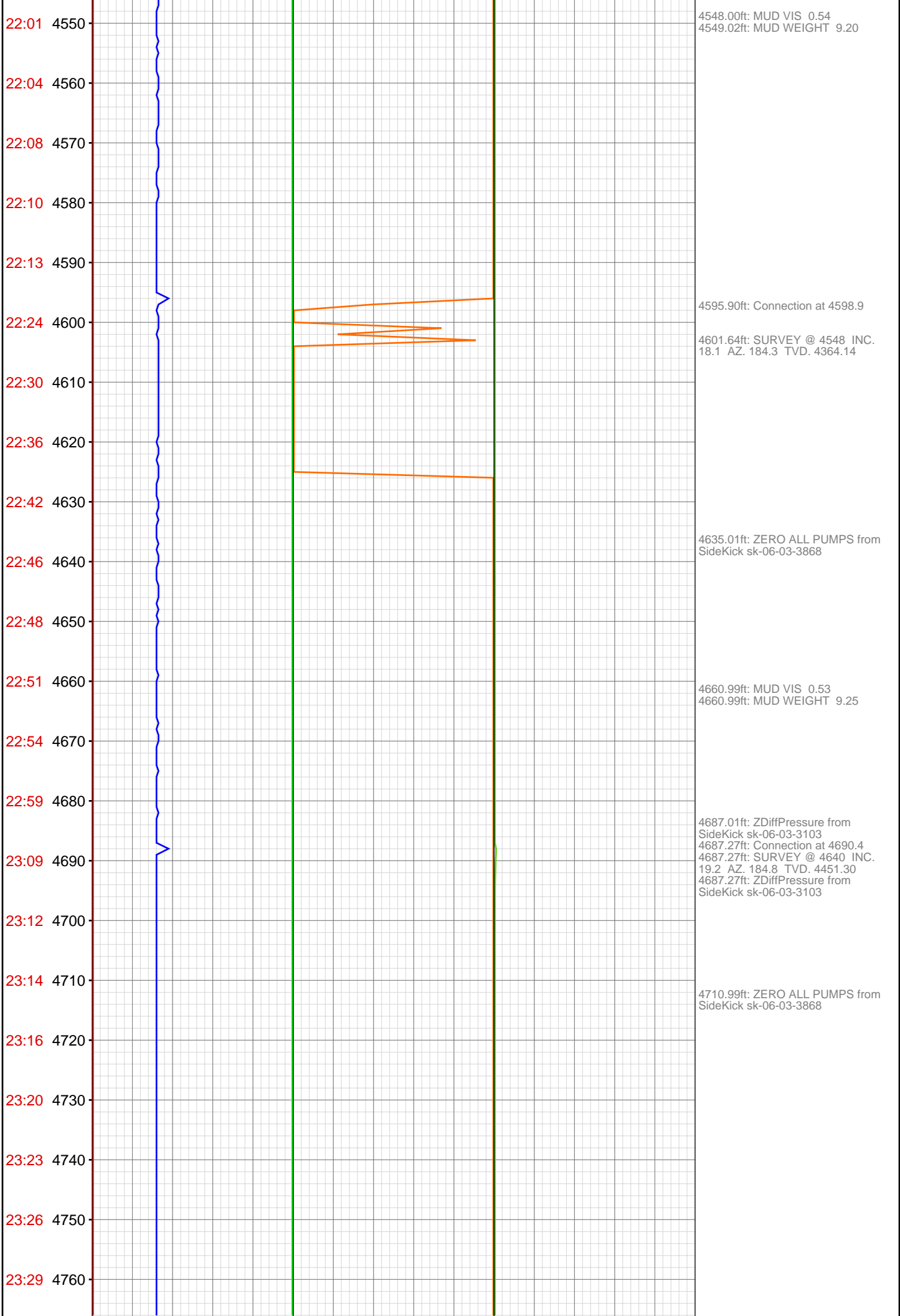
4048.00ft: MUD VIS 0.52  
4048.00ft: MUD WEIGHT 9.10  
4048.98ft: Connection at 4049.7  
4048.98ft: ZDiffPressure from  
SideKick sk-06-03-3103

4059.74ft: SURVEY @ 3999 INC.  
16.6 AZ. 182.0 TVD. 3842.56

4083.01ft: ZERO ALL PUMPS from  
SideKick sk-04-04-0797



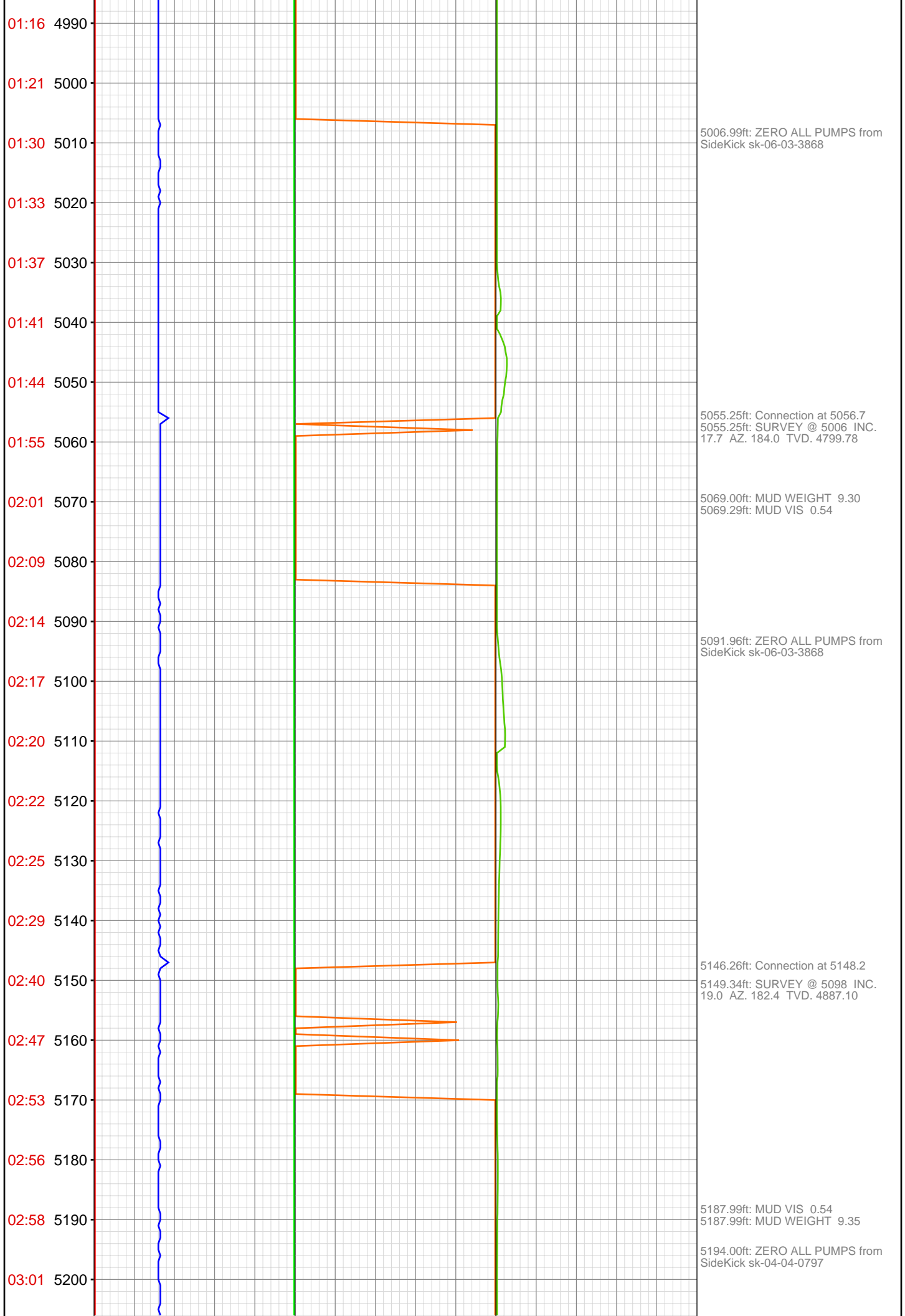




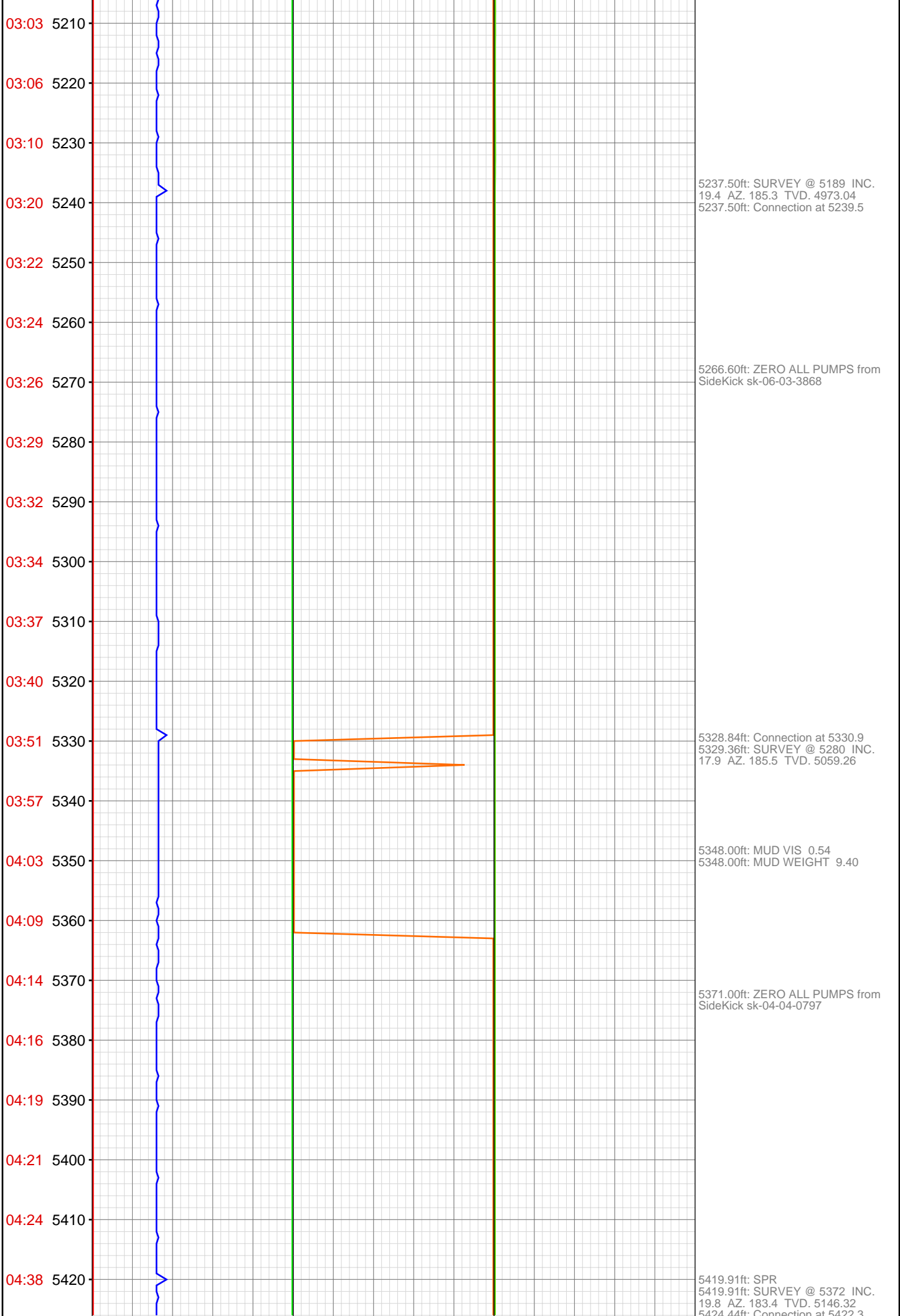
23:32 4770  
23:41 4780  
23:46 4790  
23:51 4800  
~~23:59 4810~~  
Feb 01, 2012  
00:06 4820  
00:09 4830  
00:12 4840  
00:14 4850  
00:16 4860  
00:18 4870  
00:29 4880  
00:32 4890  
00:35 4900  
00:38 4910  
00:42 4920  
00:46 4930  
00:49 4940  
00:51 4950  
00:54 4960  
01:07 4970  
01:11 4980

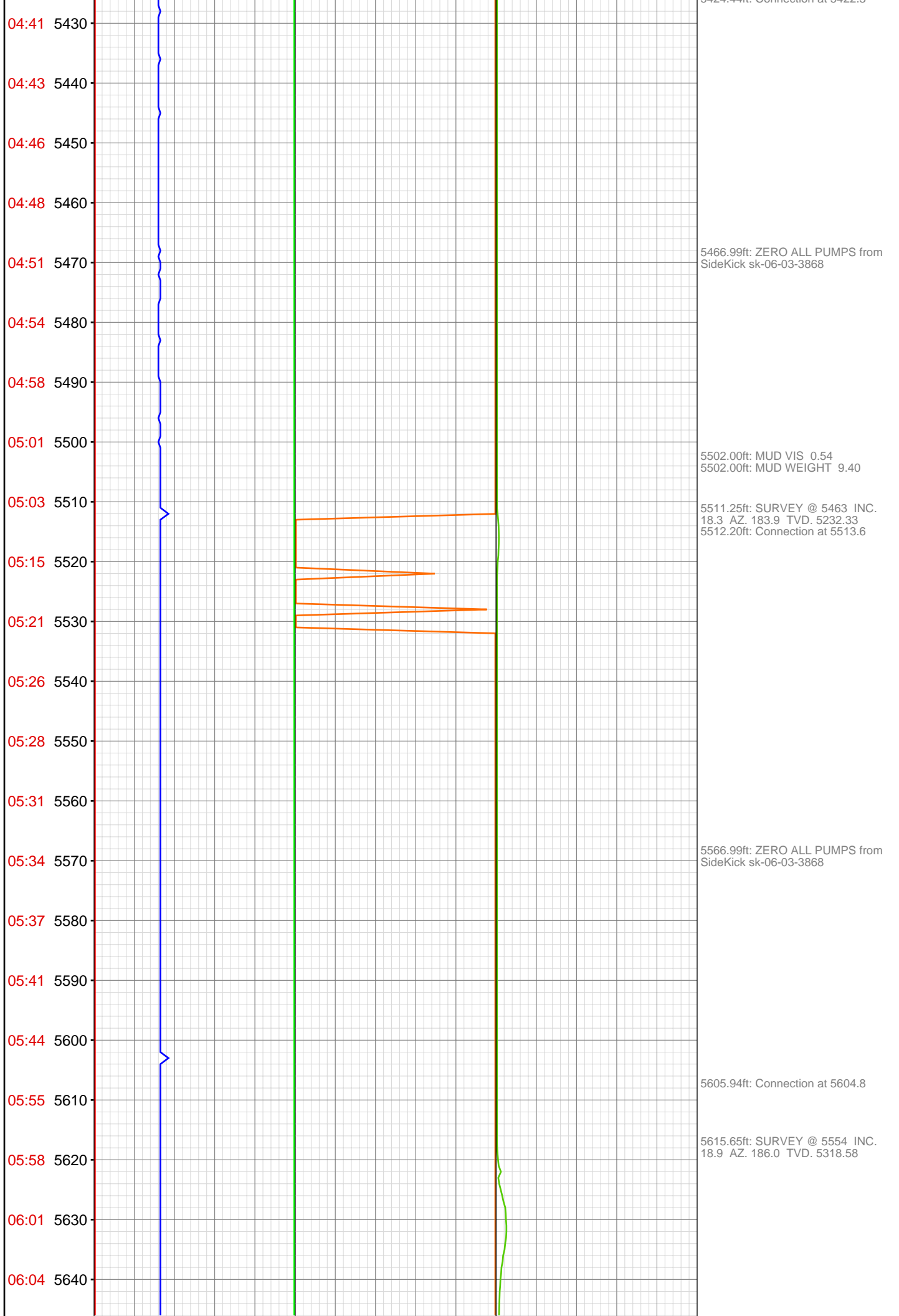


4778.38ft: Connection at 4782.0  
4783.43ft: IN TALLY: HOLE DEPTH SET TO 4782.0  
4787.11ft: SURVEY @ 4732 INC. 17.9 AZ. 185.9 TVD. 4538.52  
4812.01ft: MUD VIS 0.56  
4812.01ft: MUD WEIGHT 9.30  
4816.99ft: ZERO ALL PUMPS from SideKick sk-06-03-3868  
4872.01ft: ZDiffPressure from SideKick sk-06-03-3103  
4872.01ft: ZWOB from SideKick sk-06-03-3103  
4872.87ft: SURVEY @ 4823 INC. 18.5 AZ. 183.6 TVD. 4624.97  
Connection at 4873.6  
4895.01ft: ZERO ALL PUMPS from SideKick sk-06-03-3868  
4964.01ft: MUD VIS 0.56  
4964.01ft: MUD WEIGHT 9.30  
4964.14ft: Connection at 4965.3  
4966.21ft: SURVEY @ 4915 INC. 16.3 AZ. 183.8 TVD. 4712.76









06:07 5650  
06:10 5660  
06:13 5670  
06:16 5680  
06:18 5690  
06:29 5700  
06:32 5710  
06:35 5720  
06:38 5730  
06:41 5740  
06:44 5750  
06:47 5760  
06:50 5770  
06:53 5780  
07:04 5790  
07:06 5800  
07:10 5810  
07:13 5820  
07:15 5830  
07:18 5840  
07:21 5850  
07:24 5860

5666.99ft: MUD VIS 57.00  
5667.78ft: MUD WEIGHT 9.40

5693.87ft: Connection at 5695.8  
SURVEY @ 5645 INC: 17.9 AZ:  
186.1 TVD: 5404.93  
5694.00ft: ZDIFF from DHC

5766.99ft: MUD VIS 57.00  
5766.99ft: MUD WEIGHT 9.40

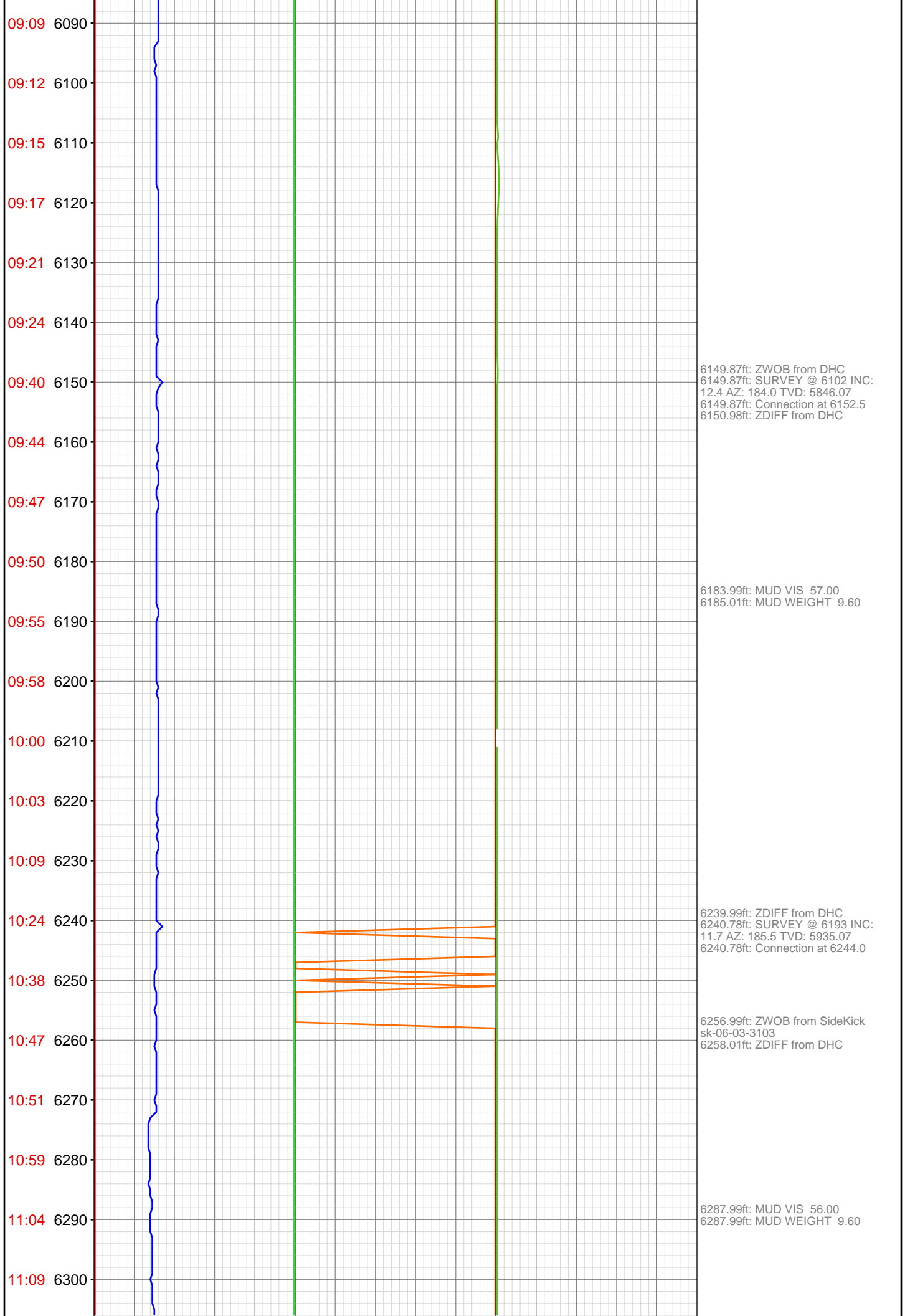
5785.01ft: ZWOB from DHC  
5785.01ft: ZDIFF from DHC  
5785.14ft: SURVEY @ 5737 INC:  
16.7 AZ: 185.4 TVD: 5492.76  
5793.04ft: Connection at 5787.2

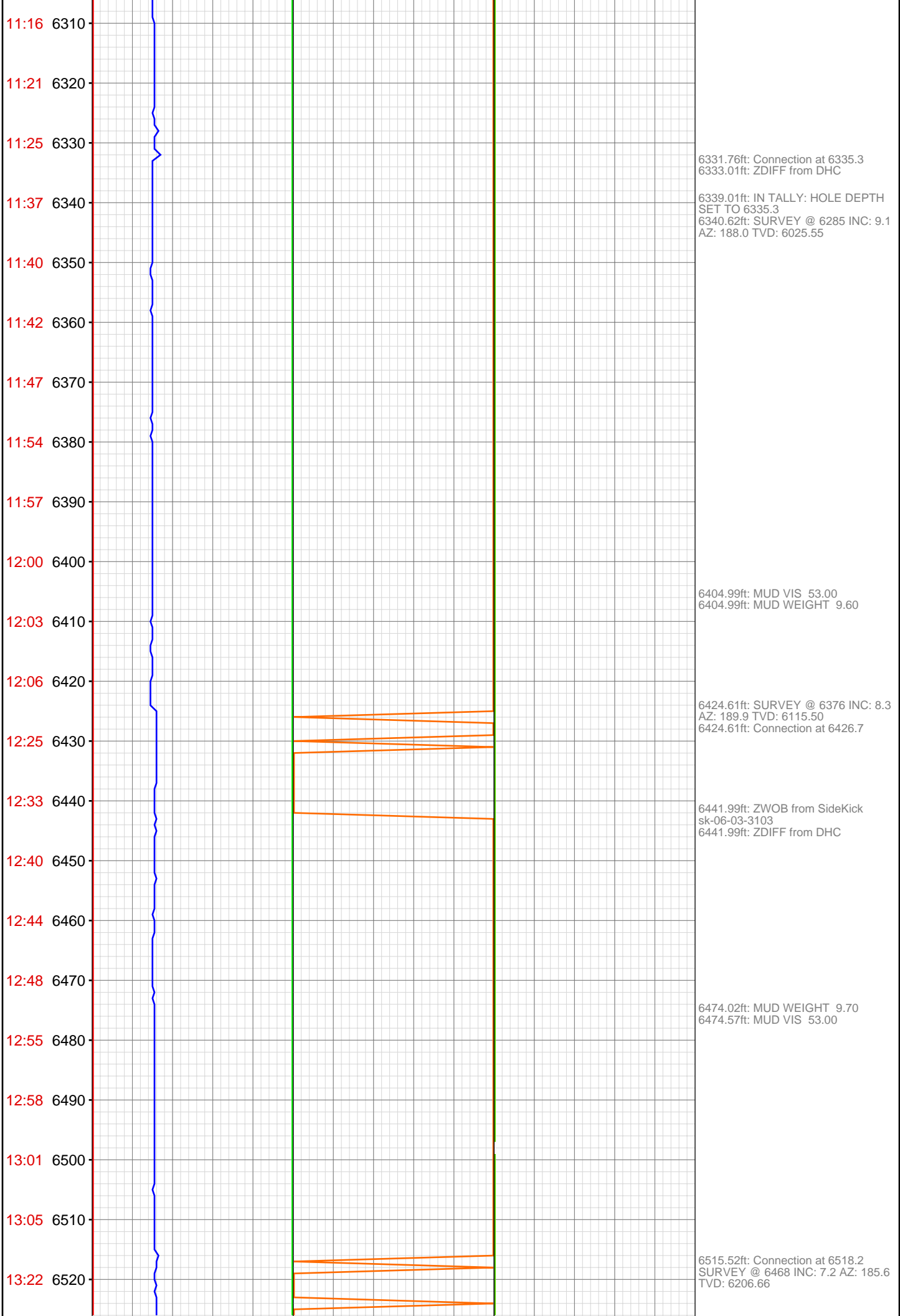
07:26 5870  
07:40 5880  
07:43 5890  
07:45 5900  
07:48 5910  
07:51 5920  
07:53 5930  
07:56 5940  
07:59 5950  
08:01 5960  
08:17 5970  
08:20 5980  
08:23 5990  
08:27 6000  
08:32 6010  
08:37 6020  
08:40 6030  
08:44 6040  
08:47 6050  
08:59 6060  
09:03 6070  
09:06 6080

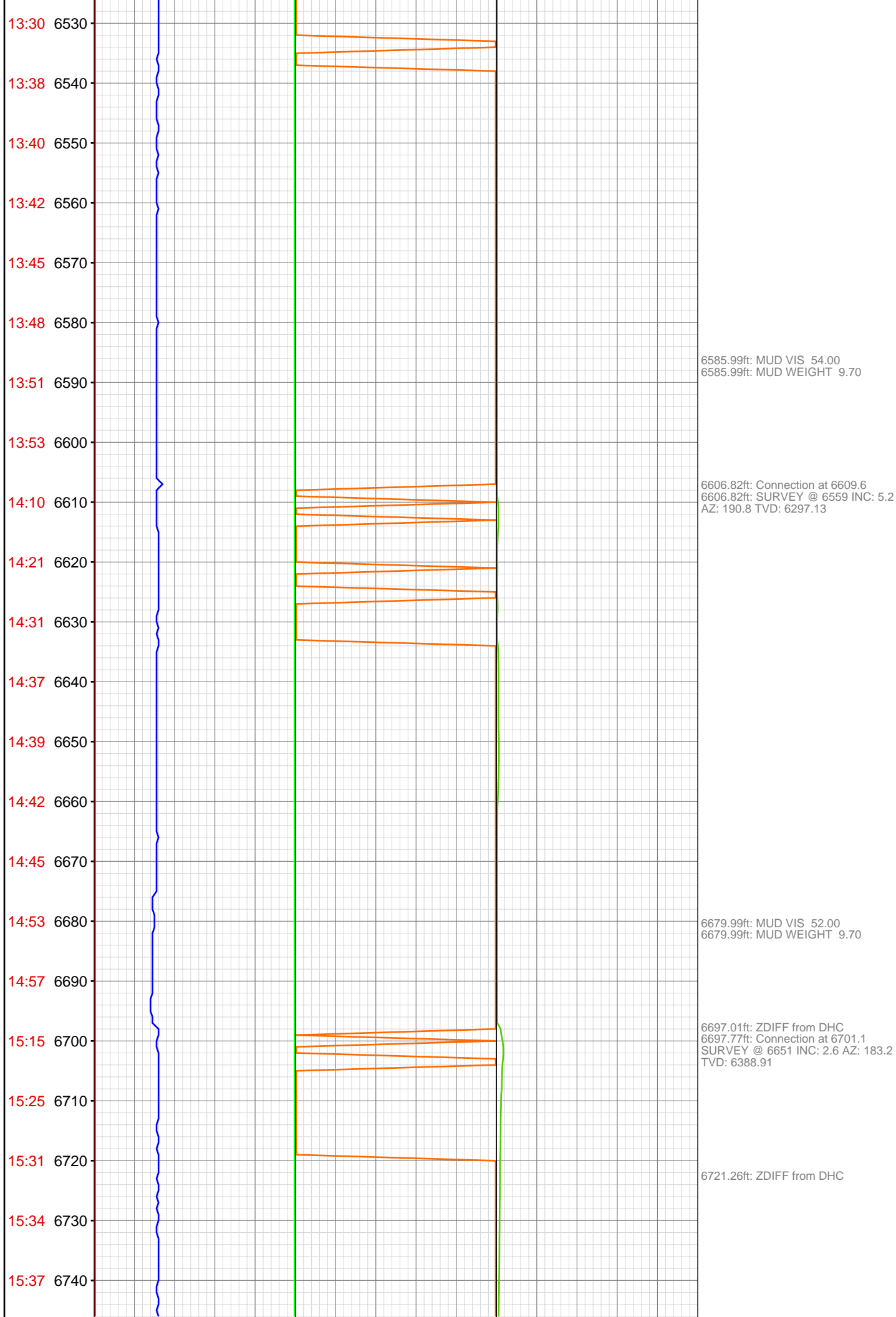
5876.31ft: SURVEY @ 5828 INC:  
15.6 AZ: 184.1 TVD: 5580.17  
5876.31ft: ZDIFF from DHC  
5877.76ft: Connection at 5878.6

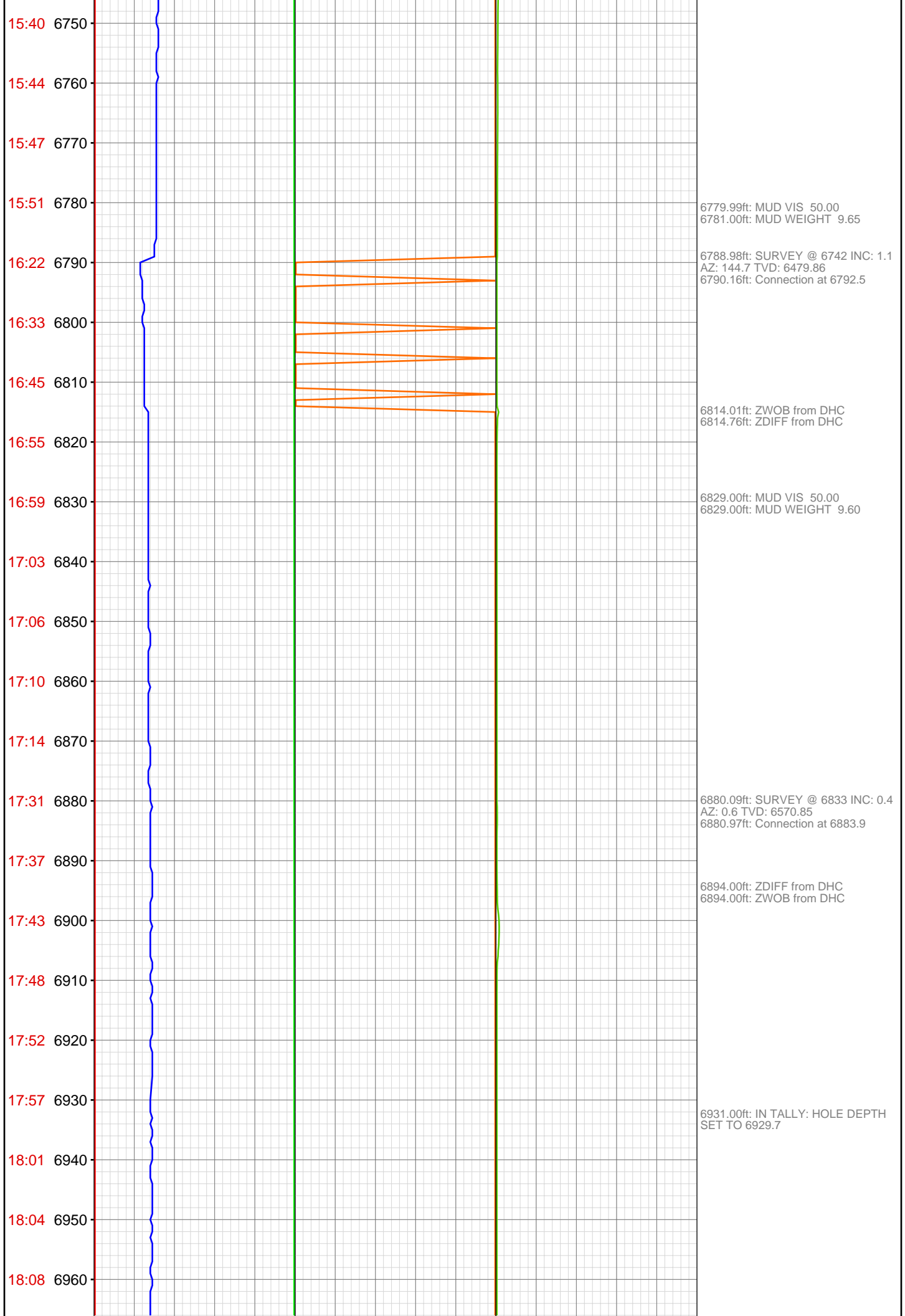
5966.99ft: ZWOB from SideKick  
sk-06-03-3103  
5966.99ft: MUD VIS 57.00  
5966.99ft: MUD WEIGHT 9.50  
5967.62ft: Connection at 5970.1

6058.66ft: Connection at 6061.7

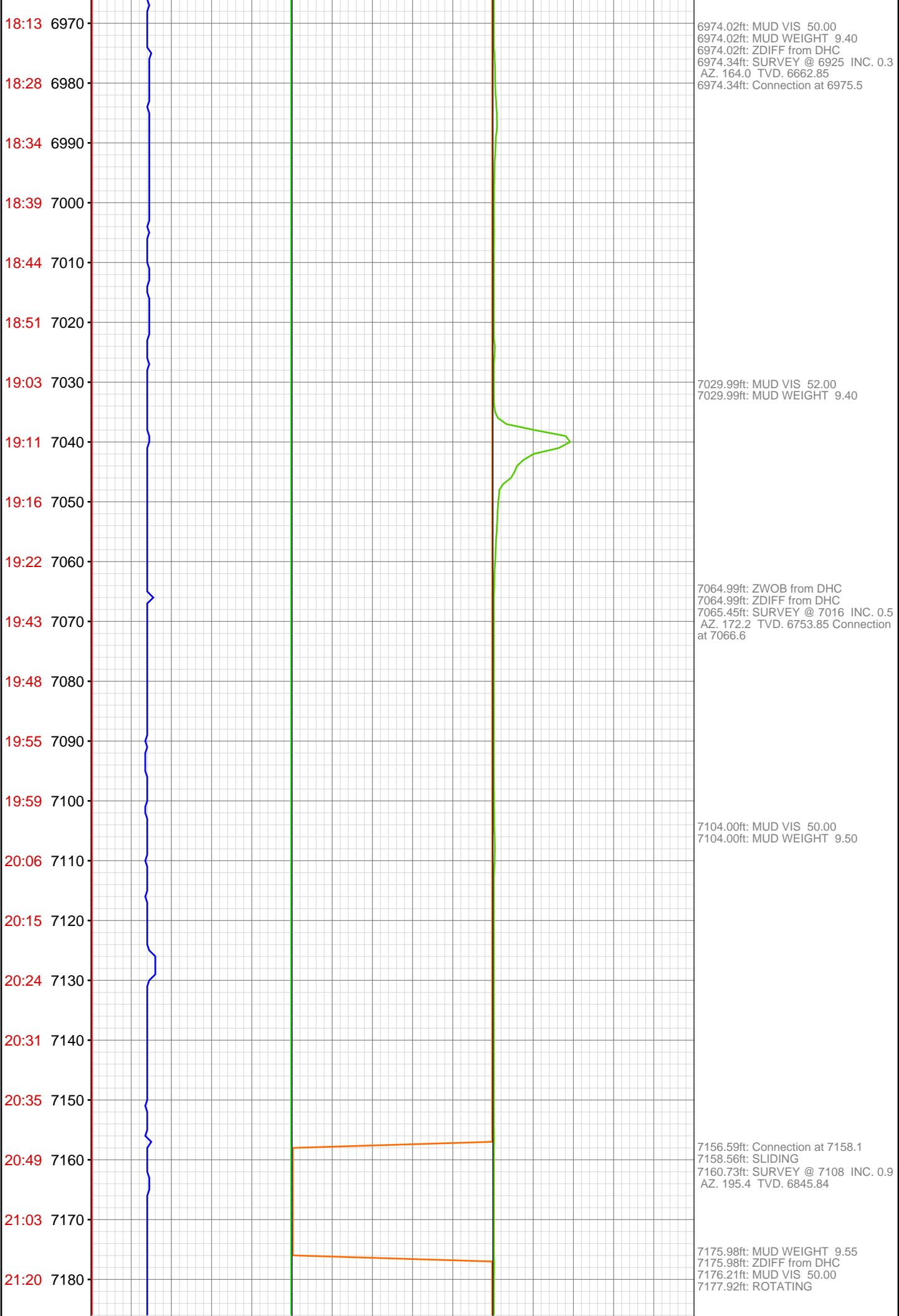












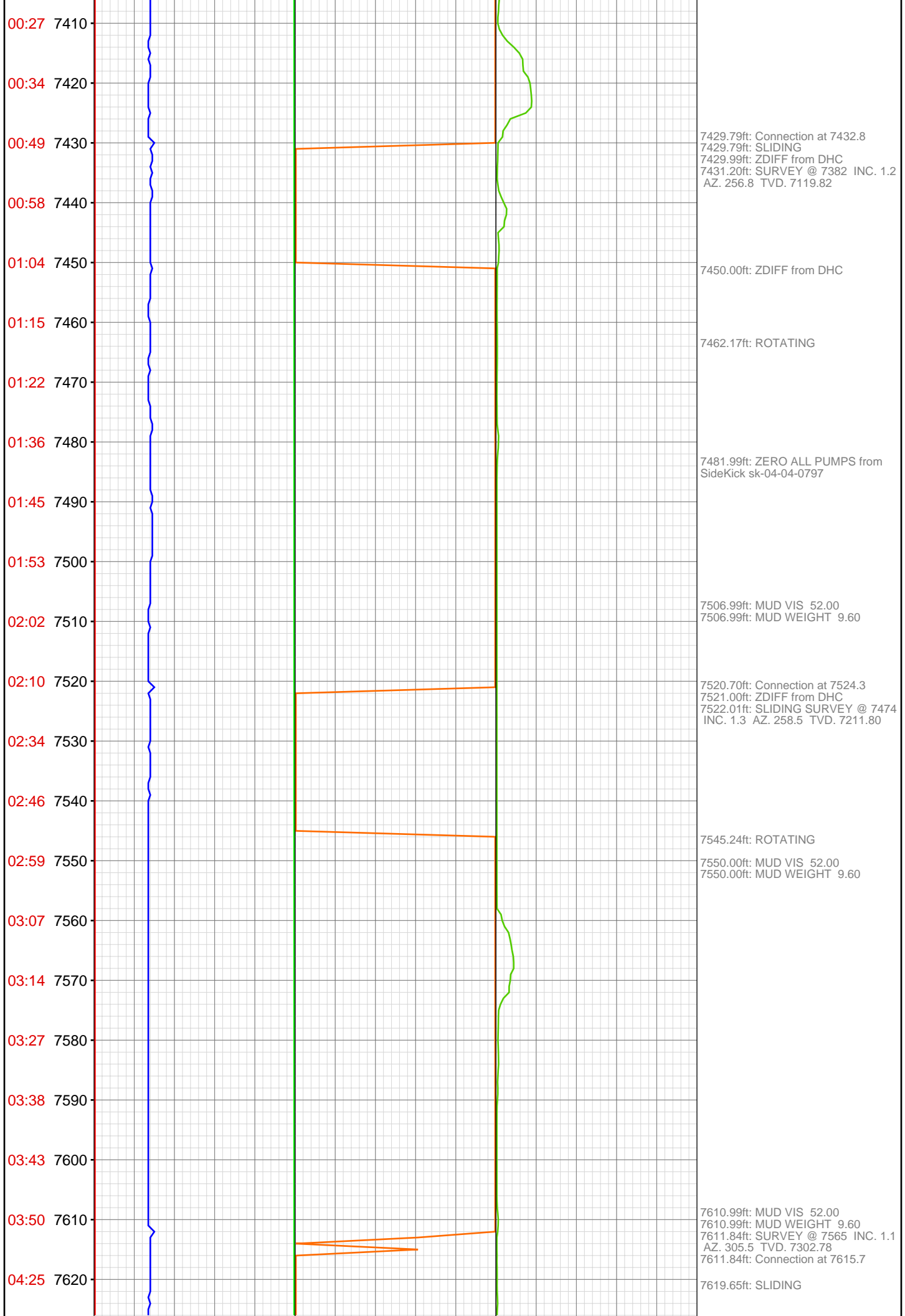
21:28 7190  
21:38 7200  
21:47 7210  
21:53 7220  
22:01 7230  
22:08 7240  
22:23 7250  
22:31 7260  
22:38 7270  
22:45 7280  
22:51 7290  
23:00 7300  
23:06 7310  
23:16 7320  
23:24 7330  
23:41 7340  
23:46 7350  
23:54 7360  
Feb 02, 2012  
00:00 7370  
00:10 7380  
00:13 7390  
00:19 7400

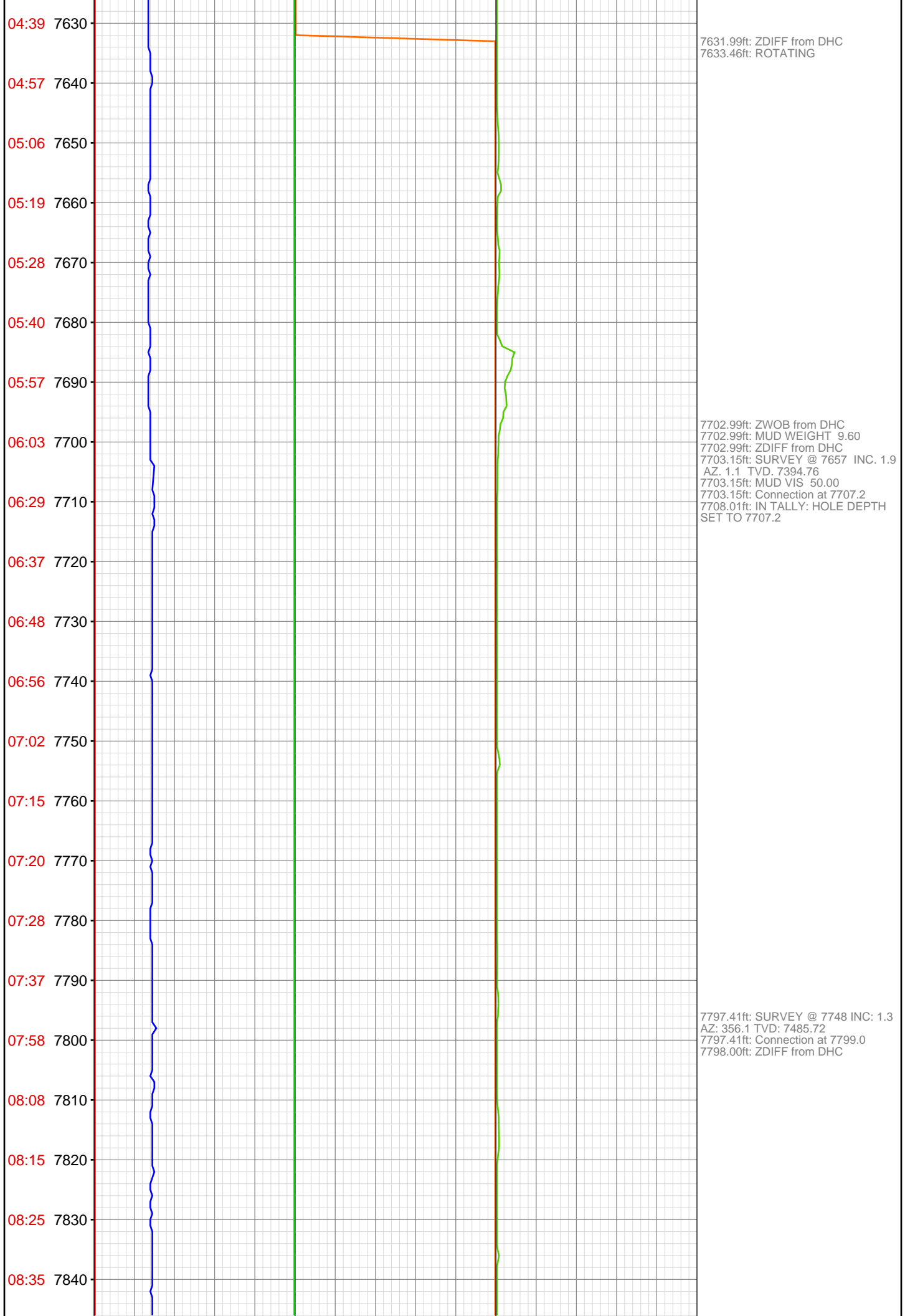
7245.01ft: MUD VIS 50.00  
7245.01ft: MUD WEIGHT 9.60  
7247.57ft: Connection at 7249.6  
7249.02ft: SURVEY @ 7199 INC. 0.6  
AZ. 339.7 TVD. 6936.84  
7252.99ft: ZERO ALL PUMPS from  
SideKick sk-04-04-0797

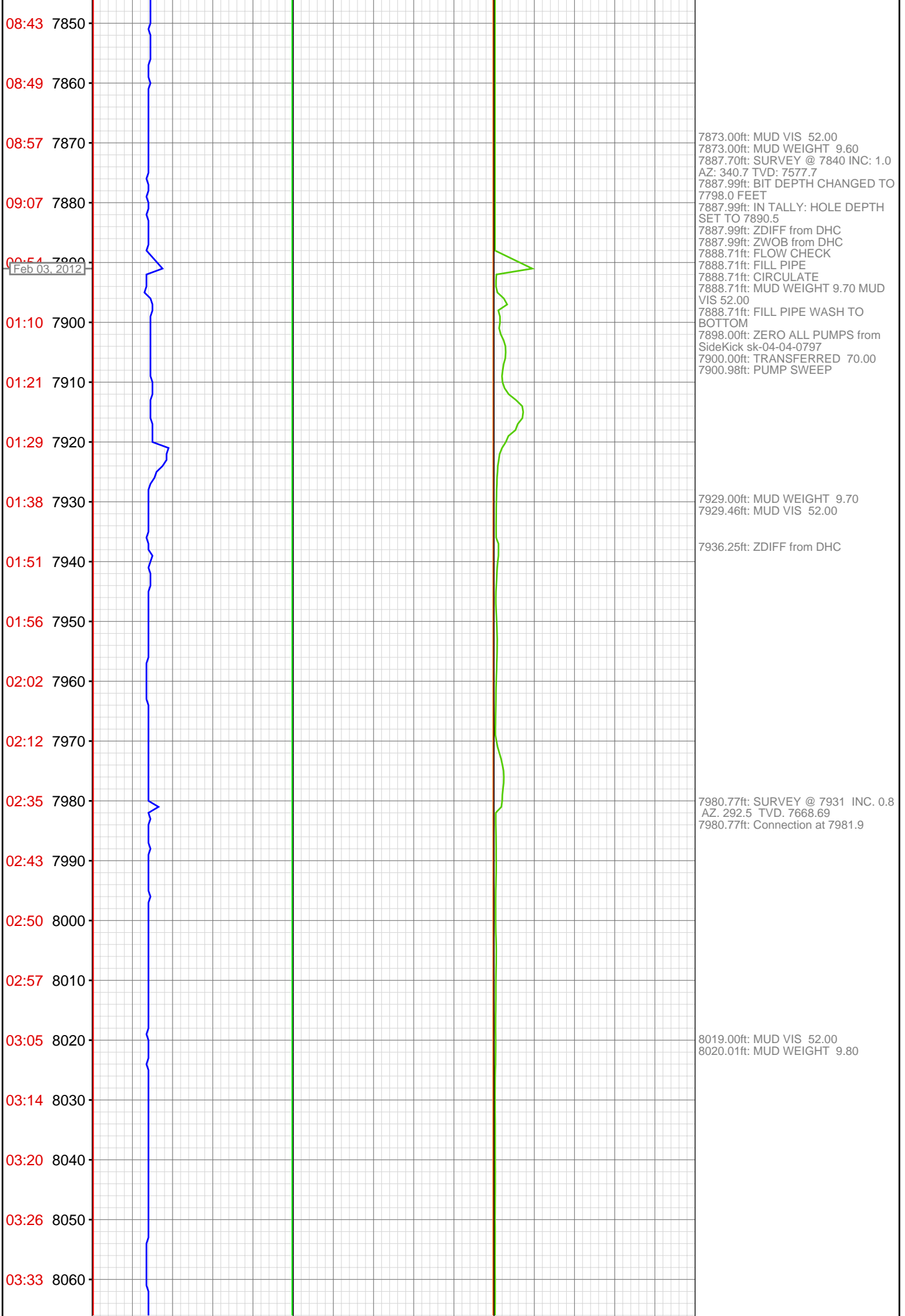
7318.01ft: MUD VIS 50.00  
7318.90ft: MUD WEIGHT 9.60

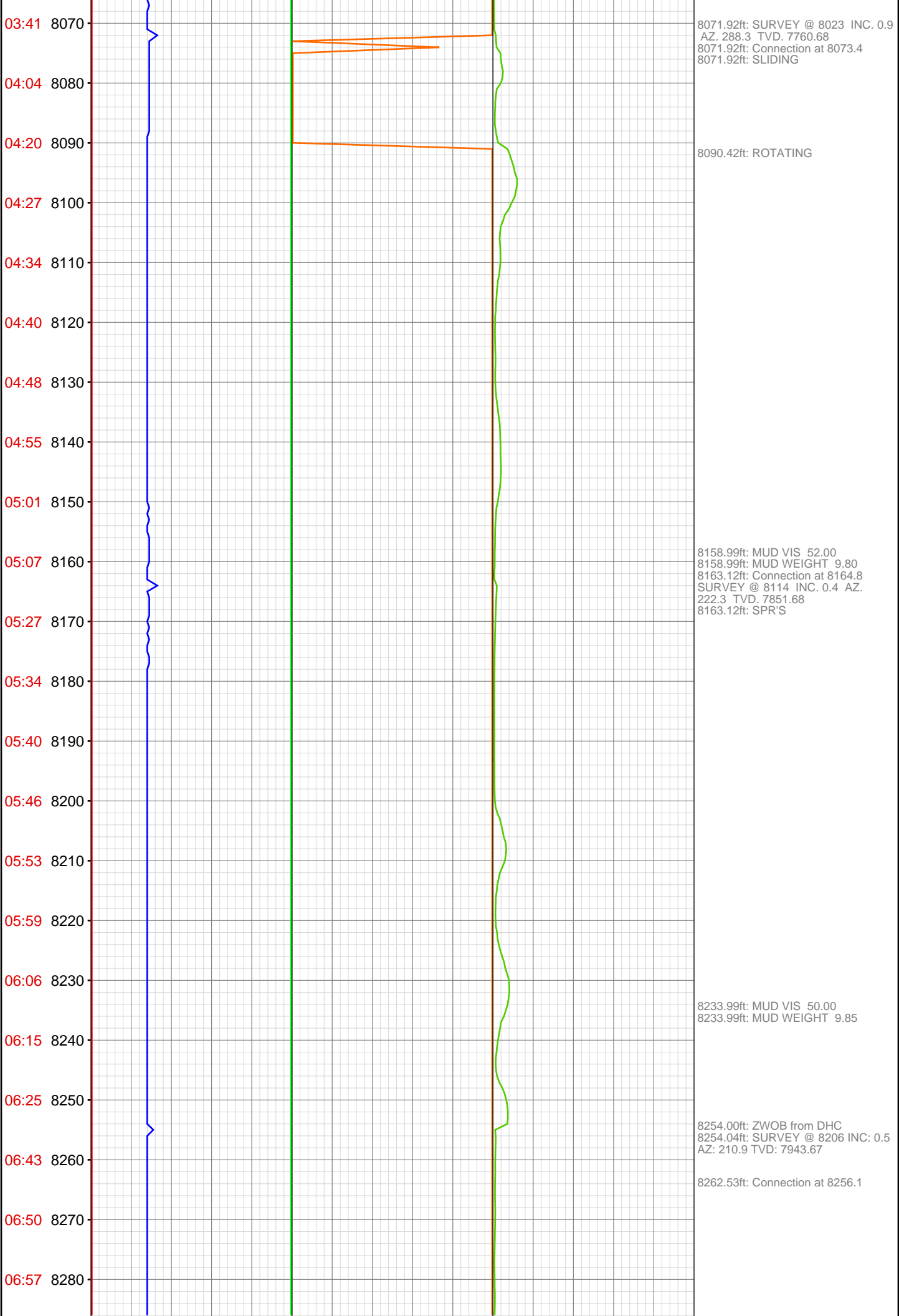
7338.58ft: Connection at 7341.2  
7339.11ft: SURVEY @ 7291 INC. 0.7  
AZ. 280.3 TVD. 7028.84

7370.01ft: MUD VIS 50.00  
7371.00ft: MUD WEIGHT 9.60









07:04 8290  
07:11 8300  
07:21 8310  
07:29 8320  
07:37 8330  
07:49 8340  
08:08 8350  
08:17 8360  
08:25 8370  
08:35 8380  
08:44 8390  
08:50 8400  
08:58 8410  
09:04 8420  
09:14 8430  
09:33 8440  
09:40 8450  
09:48 8460  
09:55 8470  
10:04 8480  
10:10 8490  
10:14 8500

8302.99ft: MUD VIS 51.00  
8303.74ft: MUD WEIGHT 9.85

8345.01ft: MUD VIS 50.00  
8345.28ft: MUD WEIGHT 9.90  
8345.28ft: SURVEY @ 9287 INC: 0.8  
AZ: 215.9 TVD: 8034.67  
8345.90ft: Connection at 8347.6  
8346.00ft: ZDIFF from DHC

8402.99ft: MUD VIS 50.00  
8402.99ft: MUD WEIGHT 10.00

8436.35ft: SURVEY @ 8389 INC: 0.9  
AZ: 216.3 TVD: 8126.66  
8436.35ft: Connection at 8439.1

