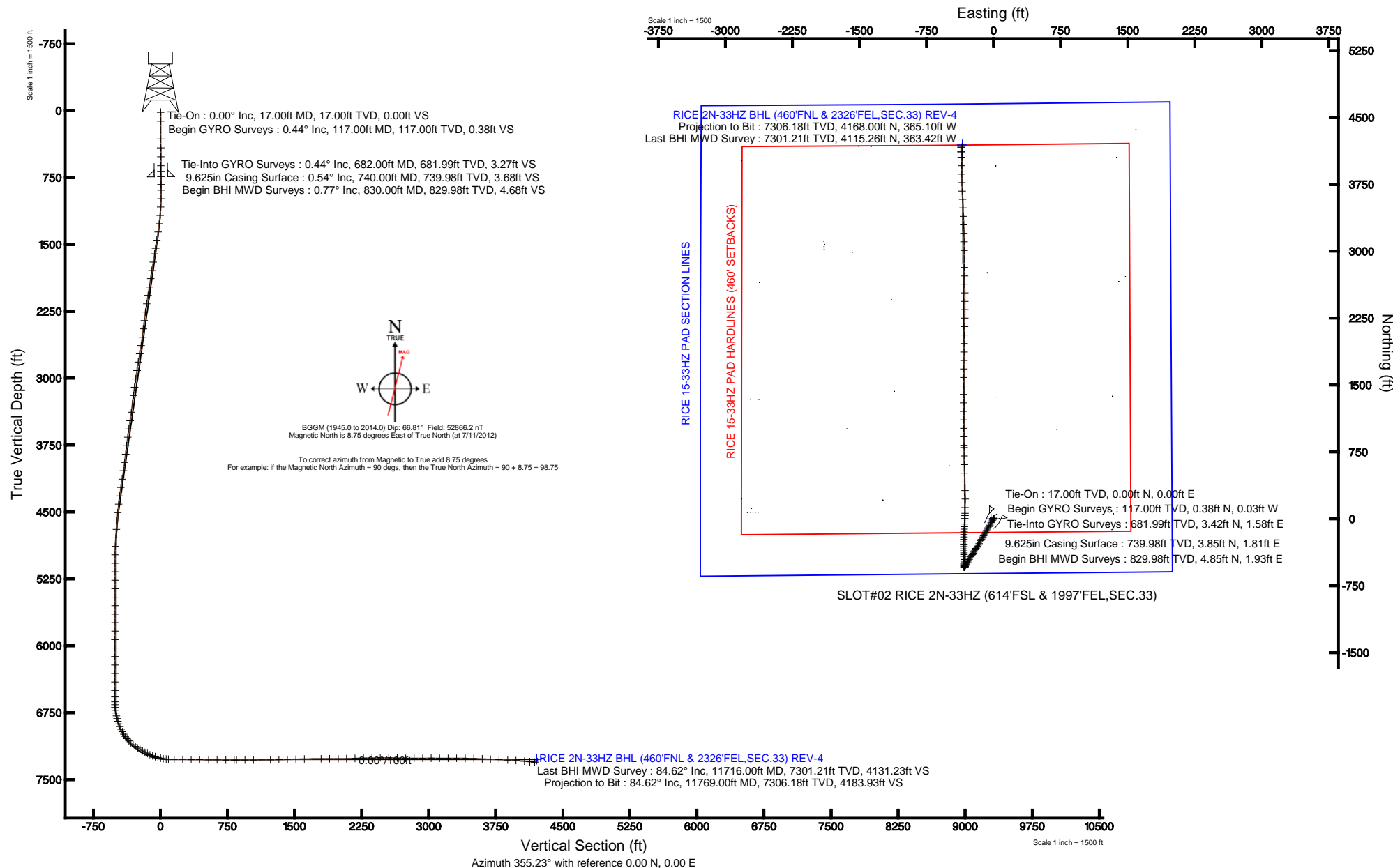


KERR-MCGEE OIL & GAS ONSHORE LP

Location: COLORADO Slot: SLOT#02 RICE 2N-33HZ (614'FSL & 1997'FEL,SEC.33)
 Field: WELD COUNTY (KERR MCGEE) Well: RICE 2N-33HZ
 Facility: SEC.33-T3N-R66W Wellbore: RICE 2N-33HZ PWB

Plot reference wellpath is RICE 2N-33HZ (REV-D.0) PWP

True vertical depths are referenced to XTREME 8 (RKB)	Grid System: NAD83 / Lambert Colorado SP, Northern Zone (501), US feet
Measured depths are referenced to XTREME 8 (RKB)	North Reference: True north
XTREME 8 (RKB) to Mean Sea Level: 4958 feet	Scale: True distance
Mean Sea Level to Mud line (At Slot: SLOT#02 RICE 2N-33HZ (614'FSL & 1997'FEL,SEC.33)): 0 feet	Depths are in feet
Coordinates are in feet referenced to Slot	Created by: wilsje02 on 8/6/2012





Actual Wellpath Report

RICE 2N-33HZ AWP

Page 1 of 7



REFERENCE WELLPATH IDENTIFICATION

Operator	KERR-MCGEE OIL & GAS ONSHORE LP	Slot	SLOT#02 RICE 2N-33HZ (614'FSL & 1997'FEL,SEC.33)
Area	COLORADO	Well	RICE 2N-33HZ
Field	WELD COUNTY (KERR MCGEE)	Wellbore	RICE 2N-33HZ AWB
Facility	SEC.33-T3N-R66W		

REPORT SETUP INFORMATION

Projection System	NAD83 / Lambert Colorado SP, Northern Zone (501), US feet	Software System	WellArchitect® 3.0.2
North Reference	True	User	Wilsjef02
Scale	0.999958	Report Generated	8/6/2012 at 14:31:53
Convergence at slot	0.47° East	Database/Source file	WellArchitectDB/RICE_2N-33HZ_AWB.xml

WELLPATH LOCATION

	Local coordinates		Grid coordinates		Geographic coordinates	
	North[ft]	East[ft]	Easting[US ft]	Northing[US ft]	Latitude	Longitude
Slot Location	0.40	29.88	3201219.76	1307760.33	40°10'33.438"N	104°46'47.590"W
Facility Reference Pt			3201189.88	1307759.68	40°10'33.434"N	104°46'47.975"W
Field Reference Pt			3197771.84	1268891.29	40°04'09.600"N	104°47'36.000"W

WELLPATH DATUM

Calculation method	Minimum curvature	XTREME 8 (RKB) to Facility Vertical Datum	4958.00ft
Horizontal Reference Pt	Slot	XTREME 8 (RKB) to Mean Sea Level	4958.00ft
Vertical Reference Pt	XTREME 8 (RKB)	XTREME 8 (RKB) to Mud Line at Slot (SLOT#02 RICE 2N-33HZ (614'FSL & 1997'FEL,SEC.33))	4958.00ft
MD Reference Pt	XTREME 8 (RKB)	Section Origin	N 0.00, E 0.00 ft
Field Vertical Reference	Mean Sea Level	Section Azimuth	354.99°



Actual Wellpath Report

RICE 2N-33HZ AWP

Page 2 of 7



REFERENCE WELLPATH IDENTIFICATION

Operator	KERR-MCGEE OIL & GAS ONSHORE LP	Slot	SLOT#02 RICE 2N-33HZ (614'FSL & 1997'FEL,SEC.33)
Area	COLORADO	Well	RICE 2N-33HZ
Field	WELD COUNTY (KERR MCGEE)	Wellbore	RICE 2N-33HZ AWB
Facility	SEC.33-T3N-R66W		

WELLPATH DATA (149 stations) † = interpolated/extrapolated station

MD [ft]	Inclination [°]	Azimuth [°]	TVD [ft]	Vert Sect [ft]	North [ft]	East [ft]	Latitude	Longitude	DLS [°/100ft]	Comments
0.00†	0.000	355.840	0.00	0.00	0.00	0.00	40°10'33.438"N	104°46'47.590"W	0.00	
17.00	0.000	355.840	17.00	0.00	0.00	0.00	40°10'33.438"N	104°46'47.590"W	0.00	Tie-On
117.00	0.440	355.840	117.00	0.38	0.38	-0.03	40°10'33.442"N	104°46'47.590"W	0.44	Begin GYRO Surveys
217.00	0.280	62.810	217.00	0.86	0.88	0.16	40°10'33.447"N	104°46'47.588"W	0.42	
317.00	0.300	95.800	317.00	0.90	0.96	0.64	40°10'33.448"N	104°46'47.582"W	0.17	
417.00	0.420	0.670	416.99	1.22	1.30	0.90	40°10'33.451"N	104°46'47.578"W	0.54	
517.00	0.440	24.720	516.99	1.92	2.02	1.07	40°10'33.458"N	104°46'47.576"W	0.18	
617.00	0.610	12.990	616.99	2.76	2.89	1.35	40°10'33.467"N	104°46'47.573"W	0.20	
682.00	0.440	39.010	681.99	3.27	3.42	1.58	40°10'33.472"N	104°46'47.570"W	0.44	Tie-Into GYRO Surveys
830.00	0.770	359.110	829.98	4.67	4.85	1.93	40°10'33.486"N	104°46'47.565"W	0.35	Begin BHI MWD Surveys
892.00	0.430	350.420	891.97	5.31	5.50	1.88	40°10'33.492"N	104°46'47.566"W	0.57	
986.00	2.320	214.400	985.95	4.19	4.28	0.75	40°10'33.480"N	104°46'47.580"W	2.82	
1080.00	3.750	214.290	1079.82	0.35	0.17	-2.06	40°10'33.440"N	104°46'47.617"W	1.52	
1174.00	5.870	212.520	1173.48	-5.85	-6.43	-6.38	40°10'33.374"N	104°46'47.672"W	2.26	
1268.00	8.160	209.180	1266.77	-15.18	-16.31	-12.21	40°10'33.277"N	104°46'47.747"W	2.47	
1361.00	10.370	208.790	1358.55	-27.60	-29.41	-19.46	40°10'33.147"N	104°46'47.841"W	2.38	
1455.00	10.420	208.180	1451.01	-41.74	-44.31	-27.55	40°10'33.000"N	104°46'47.945"W	0.13	
1549.00	11.470	211.680	1543.30	-56.35	-59.76	-36.47	40°10'32.847"N	104°46'48.060"W	1.32	
1611.00	12.120	211.870	1603.99	-66.50	-70.53	-43.15	40°10'32.741"N	104°46'48.146"W	1.05	
1707.00	10.540	210.670	1698.12	-81.69	-86.65	-52.95	40°10'32.582"N	104°46'48.272"W	1.66	
1802.00	10.760	209.100	1791.48	-96.10	-101.87	-61.69	40°10'32.431"N	104°46'48.385"W	0.38	
1896.00	10.920	210.520	1883.80	-110.61	-117.20	-70.48	40°10'32.280"N	104°46'48.498"W	0.33	
1991.00	10.820	208.290	1977.10	-125.38	-132.81	-79.28	40°10'32.126"N	104°46'48.611"W	0.45	
2087.00	10.780	208.390	2071.40	-140.41	-148.64	-87.82	40°10'31.969"N	104°46'48.721"W	0.05	
2182.00	10.930	211.970	2164.70	-155.02	-164.10	-96.81	40°10'31.816"N	104°46'48.837"W	0.73	
2277.00	9.240	207.540	2258.23	-168.65	-178.50	-105.11	40°10'31.674"N	104°46'48.944"W	1.96	
2372.00	9.330	210.050	2351.98	-181.38	-191.93	-112.49	40°10'31.541"N	104°46'49.039"W	0.44	
2467.00	8.400	211.940	2445.85	-193.23	-204.48	-120.02	40°10'31.417"N	104°46'49.136"W	1.03	
2562.00	9.070	212.120	2539.75	-204.75	-216.72	-127.67	40°10'31.296"N	104°46'49.235"W	0.71	
2657.00	10.830	210.410	2633.31	-217.99	-230.76	-136.17	40°10'31.158"N	104°46'49.344"W	1.88	
2752.00	11.380	208.470	2726.54	-233.08	-246.69	-145.16	40°10'31.000"N	104°46'49.460"W	0.70	
2847.00	10.950	207.490	2819.74	-248.51	-262.93	-153.79	40°10'30.840"N	104°46'49.571"W	0.49	
2942.00	10.480	210.620	2913.08	-263.15	-278.37	-162.35	40°10'30.687"N	104°46'49.682"W	0.79	
3038.00	10.270	211.030	3007.51	-277.16	-293.22	-171.21	40°10'30.540"N	104°46'49.796"W	0.23	
3133.00	9.600	212.650	3101.09	-290.28	-307.15	-179.85	40°10'30.403"N	104°46'49.907"W	0.76	
3228.00	8.630	213.450	3194.89	-302.13	-319.76	-188.05	40°10'30.278"N	104°46'50.013"W	1.03	
3323.00	9.960	214.850	3288.64	-314.02	-332.45	-196.68	40°10'30.153"N	104°46'50.124"W	1.42	
3418.00	9.670	211.560	3382.25	-326.74	-346.00	-205.55	40°10'30.019"N	104°46'50.238"W	0.66	
3513.00	9.880	210.100	3475.87	-339.81	-359.85	-213.81	40°10'29.882"N	104°46'50.344"W	0.34	
3608.00	10.010	210.030	3569.44	-353.24	-374.04	-222.03	40°10'29.742"N	104°46'50.450"W	0.14	
3703.00	9.710	208.400	3663.04	-366.69	-388.24	-229.97	40°10'29.601"N	104°46'50.553"W	0.43	
3798.00	8.090	213.470	3756.89	-378.61	-400.86	-237.47	40°10'29.477"N	104°46'50.649"W	1.89	
3894.00	8.940	213.690	3851.83	-389.72	-412.71	-245.33	40°10'29.360"N	104°46'50.751"W	0.89	
3989.00	9.560	214.250	3945.60	-401.59	-425.37	-253.87	40°10'29.234"N	104°46'50.860"W	0.66	
4083.00	10.590	211.990	4038.15	-414.54	-439.15	-262.84	40°10'29.098"N	104°46'50.976"W	1.17	



Actual Wellpath Report

RICE 2N-33HZ AWP

Page 3 of 7



REFERENCE WELLPATH IDENTIFICATION

Operator	KERR-MCGEE OIL & GAS ONSHORE LP	Slot	SLOT#02 RICE 2N-33HZ (614'FSL & 1997'FEL,SEC.33)
Area	COLORADO	Well	RICE 2N-33HZ
Field	WELD COUNTY (KERR MCGEE)	Wellbore	RICE 2N-33HZ AWB
Facility	SEC.33-T3N-R66W		

WELLPATH DATA (149 stations)

MD [ft]	Inclination [°]	Azimuth [°]	TVD [ft]	Vert Sect [ft]	North [ft]	East [ft]	Latitude	Longitude	DLS [°/100ft]	Comments
4178.00	11.690	212.250	4131.36	-429.17	-454.69	-272.60	40°10'28.945"N	104°46'51.102"W	1.16	
4274.00	10.070	213.150	4225.63	-443.51	-469.94	-282.38	40°10'28.794"N	104°46'51.228"W	1.70	
4369.00	9.400	210.190	4319.26	-456.38	-483.60	-290.82	40°10'28.659"N	104°46'51.337"W	0.88	
4464.00	8.030	211.310	4413.16	-468.07	-495.98	-298.17	40°10'28.537"N	104°46'51.431"W	1.45	
4559.00	7.090	211.110	4507.33	-478.15	-506.67	-304.65	40°10'28.431"N	104°46'51.515"W	0.99	
4654.00	5.970	212.380	4601.71	-486.81	-515.86	-310.32	40°10'28.340"N	104°46'51.588"W	1.19	
4749.00	5.390	216.300	4696.25	-494.09	-523.63	-315.61	40°10'28.263"N	104°46'51.656"W	0.73	
4844.00	4.720	206.940	4790.88	-500.76	-530.71	-320.02	40°10'28.194"N	104°46'51.713"W	1.12	
4939.00	2.630	210.390	4885.68	-505.85	-536.07	-322.90	40°10'28.140"N	104°46'51.750"W	2.21	
5034.00	0.630	204.330	4980.64	-508.08	-538.43	-324.22	40°10'28.117"N	104°46'51.767"W	2.11	
5129.00	0.610	37.180	5075.63	-508.17	-538.50	-324.13	40°10'28.116"N	104°46'51.766"W	1.30	
5224.00	0.400	42.060	5170.63	-507.56	-537.85	-323.60	40°10'28.123"N	104°46'51.759"W	0.23	
5319.00	0.210	236.470	5265.63	-507.42	-537.70	-323.52	40°10'28.124"N	104°46'51.758"W	0.64	
5414.00	0.400	206.690	5360.63	-507.79	-538.10	-323.81	40°10'28.120"N	104°46'51.762"W	0.25	
5509.00	0.790	212.660	5455.62	-508.59	-538.94	-324.32	40°10'28.112"N	104°46'51.768"W	0.42	
5604.00	0.430	13.870	5550.62	-508.77	-539.15	-324.59	40°10'28.110"N	104°46'51.771"W	1.27	
5699.00	0.220	295.590	5645.62	-508.34	-538.72	-324.66	40°10'28.114"N	104°46'51.772"W	0.46	
5794.00	0.370	232.040	5740.62	-508.41	-538.83	-325.07	40°10'28.113"N	104°46'51.778"W	0.35	
5889.00	0.690	236.920	5835.61	-508.85	-539.34	-325.79	40°10'28.108"N	104°46'51.787"W	0.34	
5985.00	0.940	231.130	5931.60	-509.56	-540.15	-326.89	40°10'28.100"N	104°46'51.801"W	0.27	
6080.00	0.170	24.420	6026.60	-509.87	-540.51	-327.44	40°10'28.097"N	104°46'51.808"W	1.15	
6175.00	0.280	359.740	6121.60	-509.52	-540.15	-327.38	40°10'28.100"N	104°46'51.807"W	0.15	
6270.00	0.070	174.970	6216.60	-509.34	-539.97	-327.38	40°10'28.102"N	104°46'51.807"W	0.37	
6365.00	0.620	210.440	6311.60	-509.82	-540.47	-327.63	40°10'28.097"N	104°46'51.811"W	0.59	
6460.00	0.940	236.180	6406.59	-510.61	-541.35	-328.54	40°10'28.088"N	104°46'51.822"W	0.49	
6555.00	0.110	97.060	6501.59	-511.01	-541.79	-329.10	40°10'28.084"N	104°46'51.830"W	1.08	
6627.00	0.170	255.810	6573.59	-511.04	-541.83	-329.13	40°10'28.084"N	104°46'51.830"W	0.38	
6683.00	0.370	275.730	6629.58	-511.02	-541.83	-329.39	40°10'28.084"N	104°46'51.833"W	0.39	
6715.00	1.050	352.250	6661.58	-510.71	-541.53	-329.53	40°10'28.087"N	104°46'51.835"W	3.21	
6747.00	4.100	353.030	6693.55	-509.27	-540.10	-329.71	40°10'28.101"N	104°46'51.838"W	9.53	
6778.00	7.730	351.240	6724.38	-506.08	-536.94	-330.16	40°10'28.132"N	104°46'51.843"W	11.72	
6810.00	11.060	353.830	6755.94	-500.87	-531.76	-330.82	40°10'28.183"N	104°46'51.852"W	10.49	
6842.00	13.960	356.380	6787.18	-493.94	-524.86	-331.40	40°10'28.251"N	104°46'51.859"W	9.22	
6874.00	16.700	358.810	6818.04	-485.49	-516.41	-331.74	40°10'28.335"N	104°46'51.864"W	8.79	
6906.00	18.840	0.780	6848.51	-475.76	-506.64	-331.76	40°10'28.431"N	104°46'51.864"W	6.95	
6938.00	20.010	6.090	6878.69	-465.24	-496.03	-331.11	40°10'28.536"N	104°46'51.856"W	6.62	
6969.00	22.400	5.190	6907.59	-454.22	-484.87	-330.01	40°10'28.646"N	104°46'51.841"W	7.78	
7001.00	25.610	1.740	6936.82	-441.35	-471.88	-329.25	40°10'28.775"N	104°46'51.832"W	10.94	
7033.00	29.280	358.920	6965.21	-426.67	-457.14	-329.19	40°10'28.921"N	104°46'51.831"W	12.16	
7064.00	33.030	356.970	6991.74	-410.66	-441.12	-329.78	40°10'29.079"N	104°46'51.838"W	12.53	
7096.00	36.440	356.220	7018.03	-392.44	-422.92	-330.87	40°10'29.259"N	104°46'51.852"W	10.74	
7128.00	39.490	357.680	7043.26	-372.77	-403.27	-331.90	40°10'29.453"N	104°46'51.866"W	9.94	
7159.00	42.730	357.650	7066.61	-352.41	-382.90	-332.73	40°10'29.654"N	104°46'51.876"W	10.45	
7191.00	46.550	359.050	7089.38	-329.97	-360.43	-333.37	40°10'29.876"N	104°46'51.885"W	12.33	
7222.00	51.050	0.150	7109.79	-306.72	-337.12	-333.53	40°10'30.107"N	104°46'51.887"W	14.76	



Actual Wellpath Report

RICE 2N-33HZ AWP

Page 4 of 7



REFERENCE WELLPATH IDENTIFICATION

Operator	KERR-MCGEE OIL & GAS ONSHORE LP	Slot	SLOT#02 RICE 2N-33HZ (614'FSL & 1997'FEL,SEC.33)
Area	COLORADO	Well	RICE 2N-33HZ
Field	WELD COUNTY (KERR MCGEE)	Wellbore	RICE 2N-33HZ AWB
Facility	SEC.33-T3N-R66W		

WELLPATH DATA (149 stations)

MD [ft]	Inclination [°]	Azimuth [°]	TVD [ft]	Vert Sect [ft]	North [ft]	East [ft]	Latitude	Longitude	DLS [°/100ft]	Comments
7254.00	54.890	359.910	7129.06	-281.28	-311.57	-333.52	40°10'30.359"N	104°46'51.887"W	12.01	
7286.00	56.980	359.620	7146.98	-254.87	-285.07	-333.63	40°10'30.621"N	104°46'51.888"W	6.57	
7317.00	58.650	0.640	7163.50	-228.74	-258.83	-333.56	40°10'30.880"N	104°46'51.887"W	6.06	
7349.00	60.430	1.120	7179.72	-201.30	-231.25	-333.14	40°10'31.153"N	104°46'51.882"W	5.71	
7380.00	61.920	0.840	7194.66	-174.29	-204.10	-332.67	40°10'31.421"N	104°46'51.876"W	4.87	
7412.00	63.800	1.590	7209.26	-145.98	-175.63	-332.07	40°10'31.702"N	104°46'51.868"W	6.23	
7443.00	66.690	2.120	7222.24	-118.04	-147.50	-331.16	40°10'31.980"N	104°46'51.856"W	9.45	
7475.00	70.100	2.990	7234.02	-88.55	-117.78	-329.83	40°10'32.274"N	104°46'51.839"W	10.95	
7506.00	71.590	3.910	7244.19	-59.58	-88.55	-328.06	40°10'32.563"N	104°46'51.816"W	5.56	
7538.00	74.060	4.340	7253.64	-29.40	-58.06	-325.87	40°10'32.864"N	104°46'51.788"W	7.82	
7570.00	77.700	3.640	7261.45	1.24	-27.11	-323.71	40°10'33.170"N	104°46'51.760"W	11.57	
7601.00	80.450	2.120	7267.32	31.39	3.29	-322.18	40°10'33.470"N	104°46'51.741"W	10.09	
7633.00	83.890	1.640	7271.68	62.86	34.97	-321.14	40°10'33.784"N	104°46'51.727"W	10.85	
7660.00	86.610	1.070	7273.92	89.60	61.87	-320.51	40°10'34.049"N	104°46'51.719"W	10.29	
7725.00	90.090	1.300	7275.79	154.18	126.82	-319.16	40°10'34.691"N	104°46'51.702"W	5.37	
7820.00	89.750	0.370	7275.92	248.69	221.80	-317.78	40°10'35.630"N	104°46'51.684"W	1.04	
7915.00	88.920	358.280	7277.02	343.40	316.79	-318.90	40°10'36.568"N	104°46'51.698"W	2.37	
8010.00	89.020	358.230	7278.73	438.24	411.73	-321.79	40°10'37.507"N	104°46'51.736"W	0.12	
8111.00	89.600	357.750	7279.95	539.09	512.66	-325.33	40°10'38.504"N	104°46'51.781"W	0.75	
8206.00	89.230	358.830	7280.92	633.93	607.61	-328.17	40°10'39.442"N	104°46'51.818"W	1.20	
8302.00	89.780	359.650	7281.75	729.66	703.59	-329.44	40°10'40.391"N	104°46'51.834"W	1.03	
8397.00	89.750	358.760	7282.14	824.40	798.58	-330.76	40°10'41.330"N	104°46'51.851"W	0.94	
8423.00	89.690	358.580	7282.26	850.35	824.58	-331.36	40°10'41.586"N	104°46'51.859"W	0.73	
8518.00	90.030	359.200	7282.49	945.13	919.56	-333.20	40°10'42.525"N	104°46'51.883"W	0.74	
8613.00	90.090	359.210	7282.40	1039.87	1014.55	-334.52	40°10'43.464"N	104°46'51.900"W	0.06	
8708.00	90.950	359.700	7281.53	1134.58	1109.54	-335.42	40°10'44.402"N	104°46'51.911"W	1.04	
8803.00	90.250	359.020	7280.54	1229.29	1204.53	-336.48	40°10'45.341"N	104°46'51.925"W	1.03	
8899.00	91.820	359.740	7278.80	1324.99	1300.50	-337.52	40°10'46.290"N	104°46'51.938"W	1.80	
8994.00	91.910	0.800	7275.71	1419.54	1395.45	-337.07	40°10'47.228"N	104°46'51.933"W	1.12	
9089.00	91.630	0.890	7272.78	1514.00	1490.39	-335.67	40°10'48.166"N	104°46'51.915"W	0.31	
9184.00	90.830	0.620	7270.74	1608.50	1585.36	-334.42	40°10'49.105"N	104°46'51.899"W	0.89	
9279.00	91.200	0.610	7269.06	1703.02	1680.34	-333.40	40°10'50.043"N	104°46'51.885"W	0.39	
9374.00	90.090	1.040	7267.99	1797.53	1775.32	-332.04	40°10'50.982"N	104°46'51.868"W	1.25	
9469.00	89.570	0.680	7268.27	1892.03	1870.31	-330.61	40°10'51.920"N	104°46'51.849"W	0.67	
9565.00	90.340	1.340	7268.34	1987.50	1966.30	-328.92	40°10'52.869"N	104°46'51.828"W	1.06	
9660.00	91.540	1.160	7266.79	2081.92	2061.26	-326.85	40°10'53.807"N	104°46'51.801"W	1.28	
9754.00	91.820	1.320	7264.03	2175.32	2155.20	-324.81	40°10'54.736"N	104°46'51.775"W	0.34	
9849.00	91.110	0.470	7261.60	2269.78	2250.15	-323.33	40°10'55.674"N	104°46'51.756"W	1.17	
9944.00	91.080	0.370	7259.79	2364.34	2345.13	-322.63	40°10'56.613"N	104°46'51.747"W	0.11	
10038.00	90.550	359.710	7258.45	2457.97	2439.12	-322.57	40°10'57.541"N	104°46'51.746"W	0.90	
10133.00	89.570	359.790	7258.35	2552.64	2534.12	-322.98	40°10'58.480"N	104°46'51.751"W	1.04	
10229.00	88.430	359.100	7260.02	2648.33	2630.10	-323.91	40°10'59.429"N	104°46'51.763"W	1.39	
10324.00	88.980	358.850	7262.17	2743.08	2725.06	-325.61	40°11'00.367"N	104°46'51.785"W	0.64	
10419.00	90.370	359.230	7262.71	2837.84	2820.04	-327.20	40°11'01.306"N	104°46'51.806"W	1.52	
10514.00	90.370	359.260	7262.10	2932.57	2915.03	-328.45	40°11'02.244"N	104°46'51.822"W	0.03	



Actual Wellpath Report

RICE 2N-33HZ AWP

Page 5 of 7



REFERENCE WELLPATH IDENTIFICATION

Operator	KERR-MCGEE OIL & GAS ONSHORE LP	Slot	SLOT#02 RICE 2N-33HZ (614'FSL & 1997'FEL,SEC.33)
Area	COLORADO	Well	RICE 2N-33HZ
Field	WELD COUNTY (KERR MCGEE)	Wellbore	RICE 2N-33HZ AWB
Facility	SEC.33-T3N-R66W		

WELLPATH DATA (149 stations)

MD [ft]	Inclination [°]	Azimuth [°]	TVD [ft]	Vert Sect [ft]	North [ft]	East [ft]	Latitude	Longitude	DLS [°/100ft]	Comments
10609.00	90.180	359.360	7261.64	3027.30	3010.02	-329.60	40°11'03.183"N	104°46'51.837"W	0.23	
10705.00	88.830	359.340	7262.47	3123.02	3106.01	-330.69	40°11'04.132"N	104°46'51.851"W	1.41	
10800.00	89.910	359.110	7263.51	3217.75	3200.99	-331.97	40°11'05.070"N	104°46'51.867"W	1.16	
10895.00	90.250	358.570	7263.38	3312.54	3295.97	-333.89	40°11'06.009"N	104°46'51.892"W	0.67	
10991.00	89.110	357.070	7263.92	3408.42	3391.90	-337.55	40°11'06.957"N	104°46'51.939"W	1.96	
11086.00	88.250	356.940	7266.11	3503.33	3486.74	-342.51	40°11'07.894"N	104°46'52.003"W	0.92	
11181.00	87.720	357.330	7269.45	3598.21	3581.57	-347.25	40°11'08.831"N	104°46'52.064"W	0.69	
11275.00	87.630	357.470	7273.26	3692.05	3675.39	-351.51	40°11'09.758"N	104°46'52.119"W	0.18	
11370.00	87.290	358.380	7277.47	3786.83	3770.23	-354.95	40°11'10.695"N	104°46'52.163"W	1.02	
11466.00	86.890	358.740	7282.34	3882.52	3866.08	-357.36	40°11'11.643"N	104°46'52.195"W	0.56	
11561.00	86.270	359.150	7288.01	3977.12	3960.89	-359.11	40°11'12.580"N	104°46'52.217"W	0.78	
11656.00	84.600	358.030	7295.57	4071.63	4055.56	-361.44	40°11'13.515"N	104°46'52.247"W	2.11	
11716.00	84.620	358.170	7301.21	4131.28	4115.26	-363.42	40°11'14.105"N	104°46'52.273"W	0.23	Last BHI MWD Survey
11769.00	84.620	358.170	7306.18	4183.96	4168.00	-365.10	40°11'14.626"N	104°46'52.294"W	0.00	Projection to Bit

HOLE & CASING SECTIONS - Ref Wellbore: RICE 2N-33HZ AWB Ref Wellpath: RICE 2N-33HZ AWP

String/Diameter	Start MD [ft]	End MD [ft]	Interval [ft]	Start TVD [ft]	End TVD [ft]	Start N/S [ft]	Start E/W [ft]	End N/S [ft]	End E/W [ft]
13.5in Open Hole	17.00	740.00	723.00	17.00	739.98	0.00	0.00	3.85	1.81
9.625in Casing Surface	17.00	740.00	723.00	17.00	739.98	0.00	0.00	3.85	1.81
8.75in Open Hole	740.00	7716.00	6976.00	739.98	7275.76	3.85	1.81	117.82	-319.36
7.875in Open Hole	7716.00	11769.00	4053.00	7275.76	7306.18	117.82	-319.36	4168.00	-365.10



Actual Wellpath Report

RICE 2N-33HZ AWP

Page 6 of 7



REFERENCE WELLPATH IDENTIFICATION

Operator	KERR-MCGEE OIL & GAS ONSHORE LP	Slot	SLOT#02 RICE 2N-33HZ (614'FSL & 1997'FEL,SEC.33)
Area	COLORADO	Well	RICE 2N-33HZ
Field	WELD COUNTY (KERR MCGEE)	Wellbore	RICE 2N-33HZ AWB
Facility	SEC.33-T3N-R66W		

TARGETS

Name	MD [ft]	TVD [ft]	North [ft]	East [ft]	Grid East [US ft]	Grid North [US ft]	Latitude	Longitude	Shape
RICE 15-33HZ PAD SECTION LINES		0.00	-0.40	-29.88	3201189.88	1307759.68	40°10'33.434"N	104°46'47.975"W	polygon
RICE 2N-33HZ BHL ON PLAT (460'FNL & 2130'FEL,SEC.33) REV-1		7171.00	4193.07	-153.90	3201031.83	1311951.83	40°11'14.874"N	104°46'49.573"W	point
RICE 15-33HZ PAD HARDLINES (460' SETBACKS)		7178.00	-0.40	-29.88	3201189.88	1307759.68	40°10'33.434"N	104°46'47.975"W	polygon
RICE 2N-33HZ BHL (460'FNL & 2326'FEL,SEC.33) REV-3		7218.00	4193.07	-349.90	3200835.84	1311950.23	40°11'14.874"N	104°46'52.098"W	point
RICE 2N-33HZ BHL ON PLAT (460'FNL & 2130'FEL,SEC.33) REV-2		7218.00	4193.07	-153.90	3201031.83	1311951.82	40°11'14.874"N	104°46'49.573"W	point
RICE 2N-33HZ BHL (460'FNL & 2326'FEL,SEC.33) REV-4		7275.00	4193.07	-349.90	3200835.84	1311950.23	40°11'14.874"N	104°46'52.098"W	point

WELLPATH COMPOSITION - Ref Wellbore: RICE 2N-33HZ AWB Ref Wellpath: RICE 2N-33HZ AWP

Start MD [ft]	End MD [ft]	Positional Uncertainty Model	Log Name/Comment	Wellbore
17.00	682.00	Generic gyro - continuous (Standard)	GYRODATA SURVEYS <100-682>	RICE 2N-33HZ AWB
682.00	7660.00	NaviTrak (Standard)	BHI MWD SURVEYS 8 3/4" HOLE <830-7660>	RICE 2N-33HZ AWB
7660.00	11716.00	NaviTrak (Standard)	BHI MWD SURVEYS 7 7/8" HOLE <7728-11716>	RICE 2N-33HZ AWB
11716.00	11769.00	Blind Drilling (std)	Projection to bit	RICE 2N-33HZ AWB



Actual Wellpath Report

RICE 2N-33HZ AWP

Page 7 of 7



REFERENCE WELLPATH IDENTIFICATION

Operator	KERR-MCGEE OIL & GAS ONSHORE LP	Slot	SLOT#02 RICE 2N-33HZ (614'FSL & 1997'FEL,SEC.33)
Area	COLORADO	Well	RICE 2N-33HZ
Field	WELD COUNTY (KERR MCGEE)	Wellbore	RICE 2N-33HZ AWB
Facility	SEC.33-T3N-R66W		

WELLPATH COMMENTS

MD [ft]	Inclination [°]	Azimuth [°]	TVD [ft]	Comment
17.00	0.000	355.840	17.00	Tie-On
117.00	0.440	355.840	117.00	Begin GYRO Surveys
682.00	0.440	39.010	681.99	Tie-Into GYRO Surveys
830.00	0.770	359.110	829.98	Begin BHI MWD Surveys
11716.00	84.620	358.170	7301.21	Last BHI MWD Survey
11769.00	84.620	358.170	7306.18	Projection to Bit