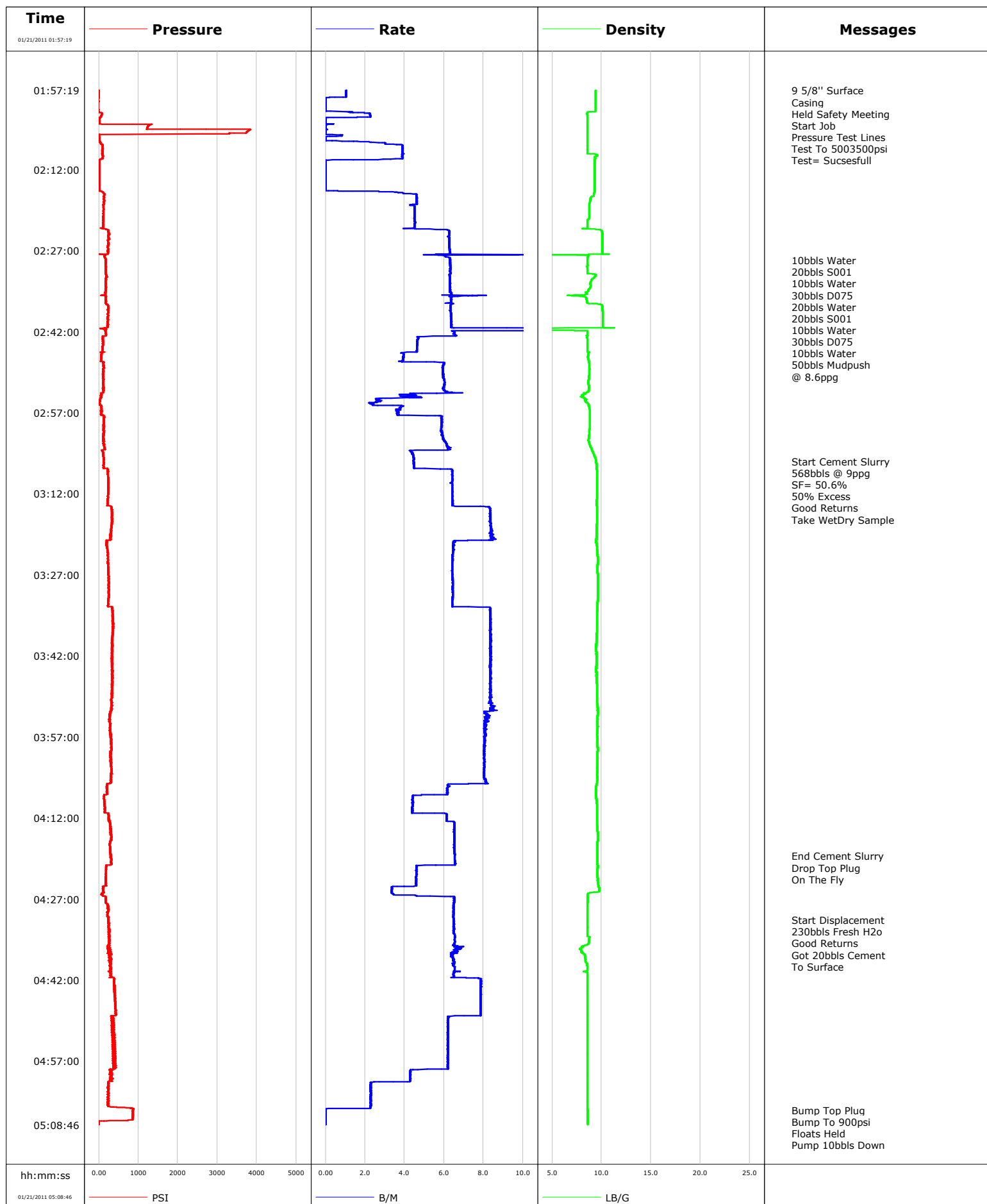


Well	SGU 8507B-25	Client	ENCANA
Field	N PARACHUTE	SIR No.	BJ90-00144
Engineer		Job Type	SURFACE
Country	United States	Job Date	01-21-2011

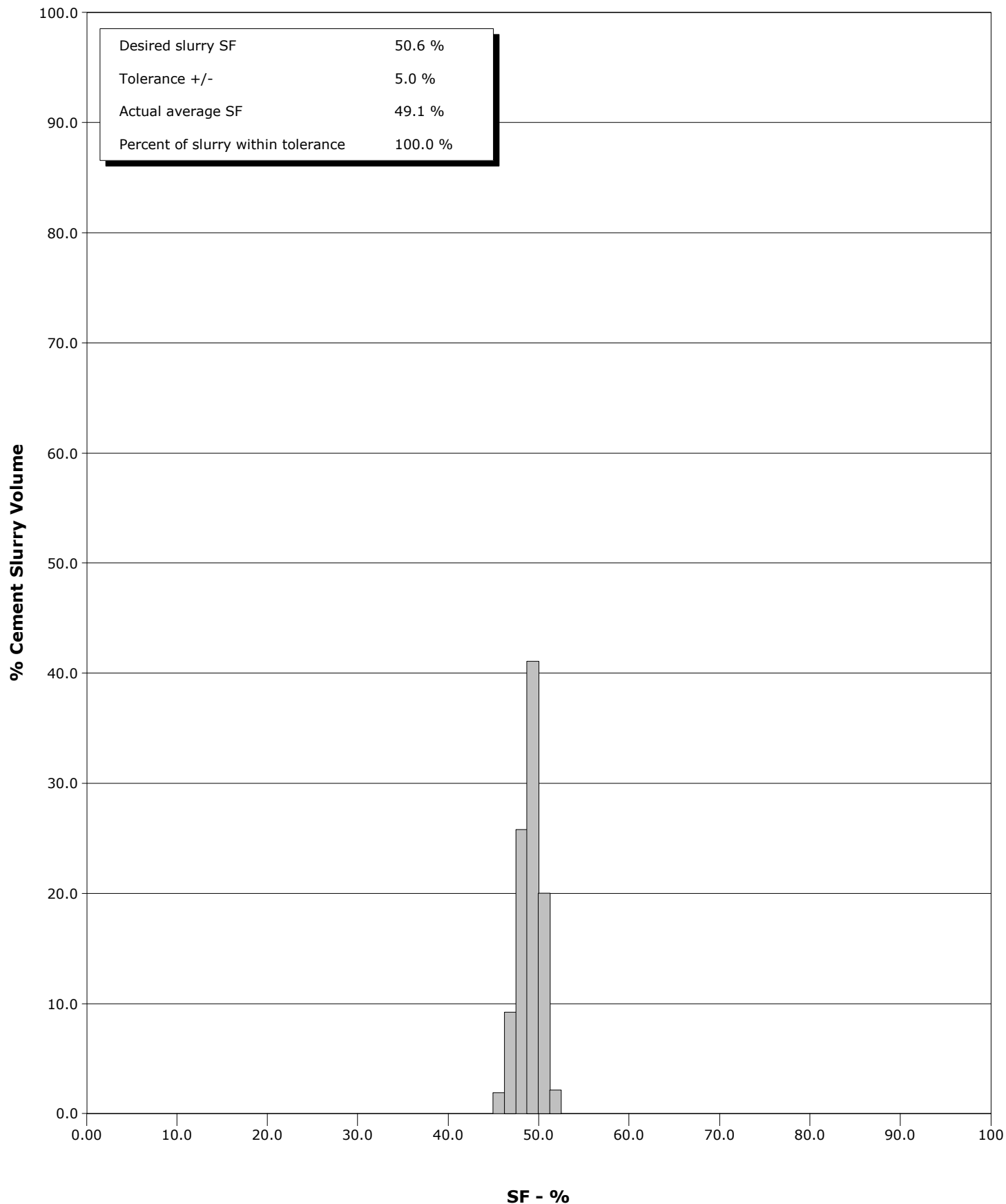


Schlumberger Cementing Qa/Qc SFM Report

Well SGU 8507B-25
Field N PARACHUTE
Engineer
Country United States

Client ENCANA
SIR No. BJ90-00144
Job Type SURFACE
Job Date 01-21-2011

Cement Slurry - 01/21/2011 03:06:01 to 01/21/2011 04:19:00





Cementing Service Report

				Customer ENCANA		Job Number BJ90-00144		
Well SGU 8507B-25			Location (legal) N PARACHUTE		Schlumberger Location GJCO		Job Start Jan/21/2011	
Field N PARACHUTE		Formation Name/Type		Deviation	Bit Size 14.8 in	Well MD		Well TVD
County GARFIELD		State/Province Colorado		BHP	BHST	BHCT	Pore Press. Gradient	
Well Master 0631228399		API/UWI						
Rig Name PATTERSON 306	Drilled For Gas	Service Via Land	Casing/Liner					
			Depth, ft	Size, in	Weight, lb/ft	Grade	Thread	
Offshore Zone	Well Class New	Well Type Development	3027.0	9.630	36.0	110	8RD	
			0.0	0.000	0.0			
Drilling Fluid Type		Max. Density	Plastic Viscosity	Tubing/Drill Pipe				
				Depth,	Size,	Weight,	Grade	Thread
Service Line Cementing	Job Type SURFACE							
Max. Allowed Tubing Press	Max. Allowed Ann. Press	WellHead Connection Single Cement head	Perforations/Open Hole					
			Top,	Bottom,		No. of Shots	Total Interval	
Service Instructions 987 SKS 9 ppg litcrete displace 230bbbs water								
			Treat Down Casing	Displacement 230.0 bbl	Packer Type	Packer Depth		
			Tubing Vol.	Casing Vol. 234.0 bbl	Annular Vol. 367.0 bbl	Openhole Vol. 601.0 bbl		
Casing/Tubing Secured <input checked="" type="checkbox"/>	1 Hole Volume Circulated prior to Cement <input checked="" type="checkbox"/>		Casing Tools			Squeeze Job		
Lift Pressure 1497 psi			Shoe Type Guide			Squeeze Type		
Pipe Rotated <input type="checkbox"/>		Pipe Reciprocated <input type="checkbox"/>	Shoe Depth 3027.0 ft			Tool Type		
No. Centralizers		Top Plugs 1	Bottom Plugs	Stage Tool Type		Tool Depth		
Cement Head Type Single			Stage Tool Depth			Tail Pipe Size		
Job Scheduled For Jan/21/2011		Arrived on Location Jan/21/2011	Leave Location Jan/21/2011	Collar Type Diff-Fill		Tail Pipe Depth		
				Collar Depth 2980.0 ft		Sqz. Total Vol.		
Date	Time 24-hr clock	Treating Pressure PSI	Flow Rate B/M	Density LB/G	Volume BBL	Message		
01/21/2011	00:30:08					Started Acquisition		
01/21/2011	01:57:18					Cement 3027'		
01/21/2011	01:57:19					9 5/8" Surface		
01/21/2011	01:57:19					Casing		
01/21/2011	01:57:19					Held Safety Meeting		
01/21/2011	01:57:19	-5	1.0	9.40	0.0			
01/21/2011	01:57:23					Start Job		
01/21/2011	01:57:23	-5	1.0	9.40	0.1			
01/21/2011	01:57:25					Pressure Test Lines		
01/21/2011	01:57:25	-5	1.0	9.40	0.1			
01/21/2011	01:57:26					Test To 500&3500psi		
01/21/2011	01:57:26					Test= Succesfull		
01/21/2011	01:57:26	-5	1.0	9.40	0.1			
01/21/2011	01:58:08	-5	1.0	9.40	0.9			
01/21/2011	02:00:08	-13	0.0	9.40	1.4			
01/21/2011	02:02:08	57	2.3	8.56	3.1			
01/21/2011	02:04:08	1232	0.0	8.55	3.7			
01/21/2011	02:06:08	2	0.0	8.55	3.9			
01/21/2011	02:08:08	103	3.9	8.55	8.5			
01/21/2011	02:10:08	29	2.9	9.30	16.2			
01/21/2011	02:12:08	6	0.0	9.28	16.4			
01/21/2011	02:14:08	7	0.0	9.28	16.4			

Well			Field		Job Start	Customer	Job Number
SGU 8507B-25			N PARACHUTE		Jan/21/2011	ENCANA	BJ90-00144
Date	Time 24-hr clock	Treating Pressure PSI	Flow Rate B/M	Density LB/G	Volume BBL	Message	
01/21/2011	02:16:08	86	3.3	9.28	16.8		
01/21/2011	02:18:08	123	4.6	8.80	25.7		
01/21/2011	02:20:08	112	4.5	8.75	34.7		
01/21/2011	02:22:08	113	4.5	8.55	43.7		
01/21/2011	02:24:08	238	6.2	10.07	54.5		
01/21/2011	02:26:08	239	6.3	10.08	67.0		
01/21/2011	02:28:08	134	6.1	8.61	80.0		
01/21/2011	02:28:48					10bbls Water	
01/21/2011	02:28:48	161	6.3	8.55	84.2		
01/21/2011	02:28:49					20bbls S001	
01/21/2011	02:28:49					10bbls Water	
01/21/2011	02:28:49					30bbls D075	
01/21/2011	02:28:49					20bbls Water	
01/21/2011	02:28:49					20bbls S001	
01/21/2011	02:28:49					10bbls Water	
01/21/2011	02:28:49	161	6.3	8.55	84.3		
01/21/2011	02:28:50					30bbls D075	
01/21/2011	02:28:50					10bbls Water	
01/21/2011	02:28:50	161	6.3	8.55	84.4		
01/21/2011	02:30:08	174	6.3	8.54	92.6		
01/21/2011	02:31:02					50bbls Mudpush	
01/21/2011	02:31:02					@ 8.6ppg	
01/21/2011	02:31:02	184	6.3	8.54	98.3		
01/21/2011	02:32:08	170	6.3	9.17	105.2		
01/21/2011	02:34:08	164	6.3	8.74	117.8		
01/21/2011	02:36:08	175	6.4	8.47	130.7		
01/21/2011	02:38:08	237	6.3	10.10	143.4		
01/21/2011	02:40:08	219	6.4	10.12	156.1		
01/21/2011	02:42:08	173	6.5	8.56	177.4		
01/21/2011	02:44:08	107	4.7	8.55	188.2		
01/21/2011	02:46:08	65	3.9	8.66	197.2		
01/21/2011	02:48:08	106	6.0	8.75	206.1		
01/21/2011	02:50:08	104	5.9	8.73	218.0		
01/21/2011	02:52:08	117	6.0	8.70	230.0		
01/21/2011	02:54:08	69	4.3	8.01	240.9		
01/21/2011	02:56:08	73	3.8	8.76	246.9		
01/21/2011	02:58:08	126	5.9	8.80	255.6		
01/21/2011	03:00:08	133	5.9	8.77	267.3		
01/21/2011	03:02:08	106	6.0	8.66	279.1		
01/21/2011	03:04:08	92	4.3	9.07	291.1		
01/21/2011	03:06:01					Start Cement Slurry	
01/21/2011	03:06:01					568bbls @ 9ppg	
01/21/2011	03:06:01	122	4.5	9.44	299.4		
01/21/2011	03:06:02					SF= 50.6%	
01/21/2011	03:06:02					50% Excess	
01/21/2011	03:06:02					Good Returns	
01/21/2011	03:06:02					Take Wet&Dry Sample	
01/21/2011	03:06:02	121	4.5	9.45	299.5		
01/21/2011	03:06:08	120	4.5	9.45	299.9		
01/21/2011	03:08:08	227	6.4	9.53	310.3		
01/21/2011	03:10:08	229	6.4	9.55	323.1		
01/21/2011	03:12:08	227	6.4	9.52	335.9		
01/21/2011	03:14:08	217	6.4	9.50	348.8		
01/21/2011	03:16:08	324	8.3	9.54	365.1		
01/21/2011	03:18:08	320	8.4	9.51	381.7		

Well			Field		Job Start	Customer		Job Number
SGU 8507B-25			N PARACHUTE		Jan/21/2011	ENCANA		BJ90-00144
Date	Time 24-hr clock	Treating Pressure PSI	Flow Rate B/M	Density LB/G	Volume BBL	Message		
01/21/2011	03:20:08	308	8.3	9.48	398.5			
01/21/2011	03:22:08	211	6.5	9.54	412.5			
01/21/2011	03:24:08	230	6.4	9.61	425.4			
01/21/2011	03:26:08	237	6.4	9.60	438.2			
01/21/2011	03:28:08	249	6.4	9.62	451.0			
01/21/2011	03:30:08	245	6.4	9.63	463.9			
01/21/2011	03:32:08	229	6.4	9.60	476.7			
01/21/2011	03:34:08	352	8.3	9.55	491.8			
01/21/2011	03:36:08	348	8.3	9.54	508.5			
01/21/2011	03:38:08	347	8.4	9.50	525.2			
01/21/2011	03:40:08	328	8.4	9.46	541.9			
01/21/2011	03:42:08	327	8.4	9.47	558.6			
01/21/2011	03:44:08	340	8.3	9.46	575.3			
01/21/2011	03:46:08	350	8.3	9.47	592.0			
01/21/2011	03:48:08	334	8.3	9.53	608.6			
01/21/2011	03:50:08	305	8.4	9.53	625.3			
01/21/2011	03:52:08	311	8.6	9.59	642.1			
01/21/2011	03:54:08	257	8.3	9.57	658.4			
01/21/2011	03:56:08	298	8.1	9.56	674.6			
01/21/2011	03:58:08	295	8.1	9.57	690.7			
01/21/2011	04:00:08	288	8.0	9.58	706.8			
01/21/2011	04:02:08	305	8.0	9.57	722.8			
01/21/2011	04:04:08	306	8.0	9.56	738.9			
01/21/2011	04:06:08	206	6.2	9.46	754.2			
01/21/2011	04:08:08	126	4.4	9.42	765.9			
01/21/2011	04:10:08	155	4.4	9.55	774.7			
01/21/2011	04:12:08	246	6.1	9.53	785.2			
01/21/2011	04:14:08	294	6.5	9.59	798.0			
01/21/2011	04:16:08	313	6.5	9.65	811.0			
01/21/2011	04:18:08	286	6.5	9.58	824.0			
01/21/2011	04:19:00					End Cement Slurry		
01/21/2011	04:19:00	302	6.5	9.59	829.7			
01/21/2011	04:19:03					Drop Top Plug		
01/21/2011	04:19:03	291	6.5	9.59	830.0			
01/21/2011	04:19:04					On The Fly		
01/21/2011	04:19:04	294	6.5	9.59	830.1			
01/21/2011	04:20:08	303	6.6	9.60	837.1			
01/21/2011	04:22:08	179	4.6	9.58	847.5			
01/21/2011	04:24:08	167	4.6	9.64	856.7			
01/21/2011	04:26:08	69	3.4	8.60	864.1			
01/21/2011	04:28:08	239	6.5	8.57	876.2			
01/21/2011	04:30:08	218	6.5	8.58	889.1			
01/21/2011	04:30:52					Start Displacement		
01/21/2011	04:30:52	246	6.5	8.58	893.9			
01/21/2011	04:30:53					230bbls Fresh H2o		
01/21/2011	04:30:53					Good Returns		
01/21/2011	04:30:53					Got 20bbls Cement		
01/21/2011	04:30:53					To Surface		
01/21/2011	04:30:53	247	6.5	8.58	894.0			
01/21/2011	04:32:08	251	6.5	8.58	902.1			
01/21/2011	04:34:08	270	6.5	8.75	915.1			
01/21/2011	04:36:08	242	6.7	7.84	928.2			
01/21/2011	04:38:08	332	6.5	8.35	941.3			
01/21/2011	04:40:08	306	6.5	8.55	954.3			
01/21/2011	04:42:08	379	7.9	8.58	968.0			

Well			Field		Job Start	Customer		Job Number
SGU 8507B-25			N PARACHUTE		Jan/21/2011	ENCANA		BJ90-00144
Date	Time 24-hr clock	Treating Pressure PSI	Flow Rate B/M	Density LB/G	Volume BBL	Message		
01/21/2011	04:44:08	391	7.9	8.57	983.7			
01/21/2011	04:46:08	409	7.9	8.58	999.5			
01/21/2011	04:48:08	417	7.8	8.58	1015.2			
01/21/2011	04:50:08	347	6.2	8.58	1028.4			
01/21/2011	04:52:08	349	6.2	8.58	1040.8			
01/21/2011	04:54:08	368	6.2	8.58	1053.1			
01/21/2011	04:56:08	424	6.2	8.58	1065.5			
01/21/2011	04:58:08	423	6.2	8.58	1077.9			
01/21/2011	05:00:08	296	4.3	8.58	1087.2			
01/21/2011	05:02:08	243	2.3	8.58	1093.1			
01/21/2011	05:04:08	219	2.3	8.58	1097.7			
01/21/2011	05:06:03					Bump Top Plug		
01/21/2011	05:06:03	856	0.0	8.58	1101.4			
01/21/2011	05:06:08	866	0.0	8.58	1101.4			
01/21/2011	05:06:12					Bump To 900psi		
01/21/2011	05:06:12	857	0.0	8.58	1101.4			
01/21/2011	05:08:08	0	0.0	8.58	1101.4			
01/21/2011	05:08:10					Floats Held		
01/21/2011	05:08:10	-7	0.0	8.58	1101.4			
01/21/2011	05:08:23					Pump 10bbls Down		
01/21/2011	05:08:23					Parasite		
01/21/2011	05:08:23	-8	0.0	8.58	1101.4			
01/21/2011	05:08:53					End Job		

Post Job Summary

Average Pump Rates, bbl/min					Volume of Fluid Injected, bbl			
Slurry 6.2	N2	Mud 0.0	Maximum Rate 25.0	Total Slurry 1101.4	Mud 0.0	Spacer 299.3	N2	
Treating Pressure Summary, psi				Breakdown Fluid				
Maximum 3833	Final -5	Average 257	Bump Plug to 900	Breakdown	Type	Volume	Density	
Avg. N2 Percent	Designed Slurry Volume 497.0 bbl		Displacement 271.4 bbl	Mix Water Temp 67 degF	Cement Circulated to Surface? <input checked="" type="checkbox"/>	Washed Thru Perfs <input type="checkbox"/>	Volume 20.0 bbl	
Customer or Authorized Representative JAMES GARDNER			Schlumberger Supervisor JASON CRICK			Circulation Lost <input type="checkbox"/>	Job Completed <input checked="" type="checkbox"/>	
						-	-	