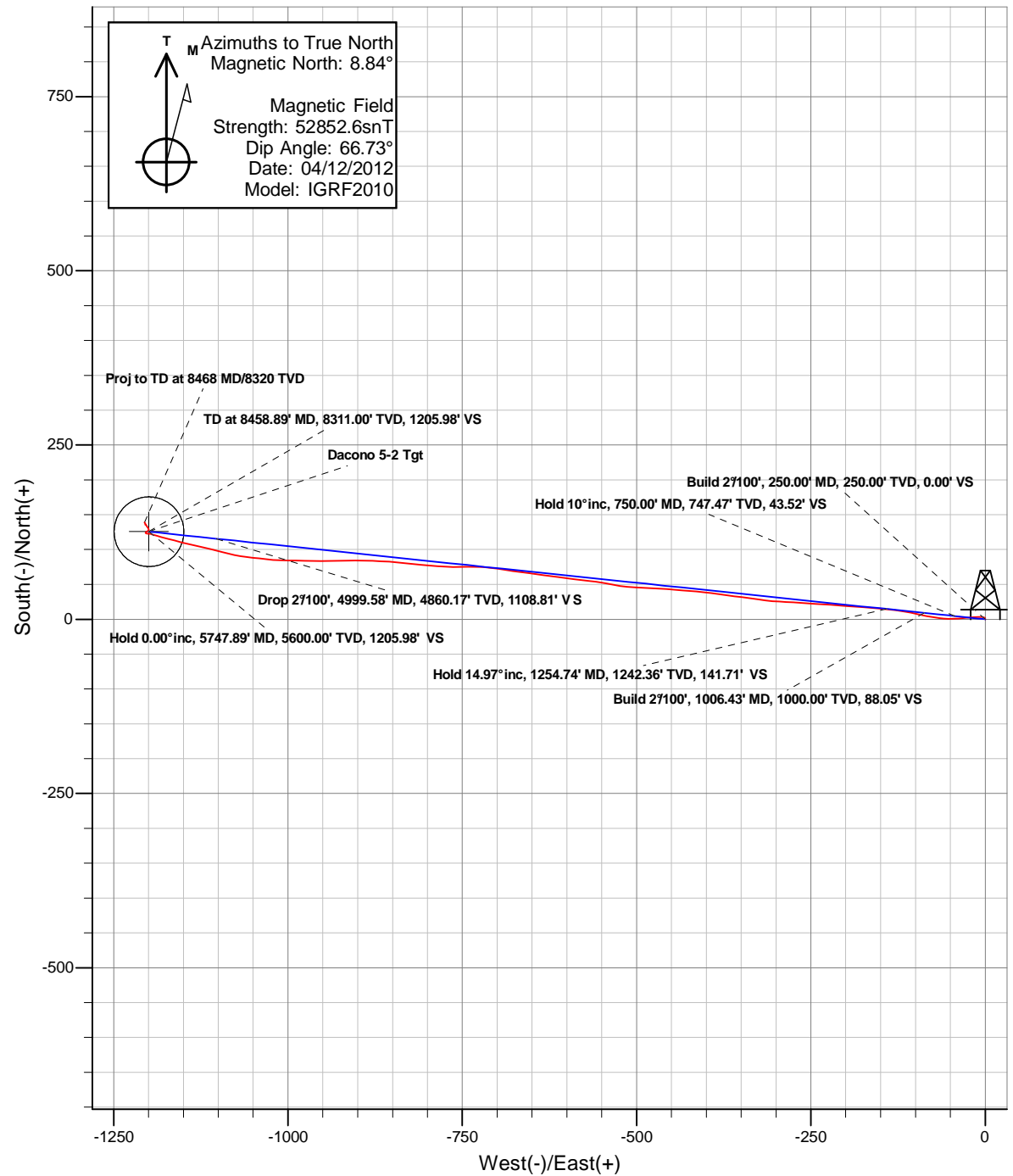
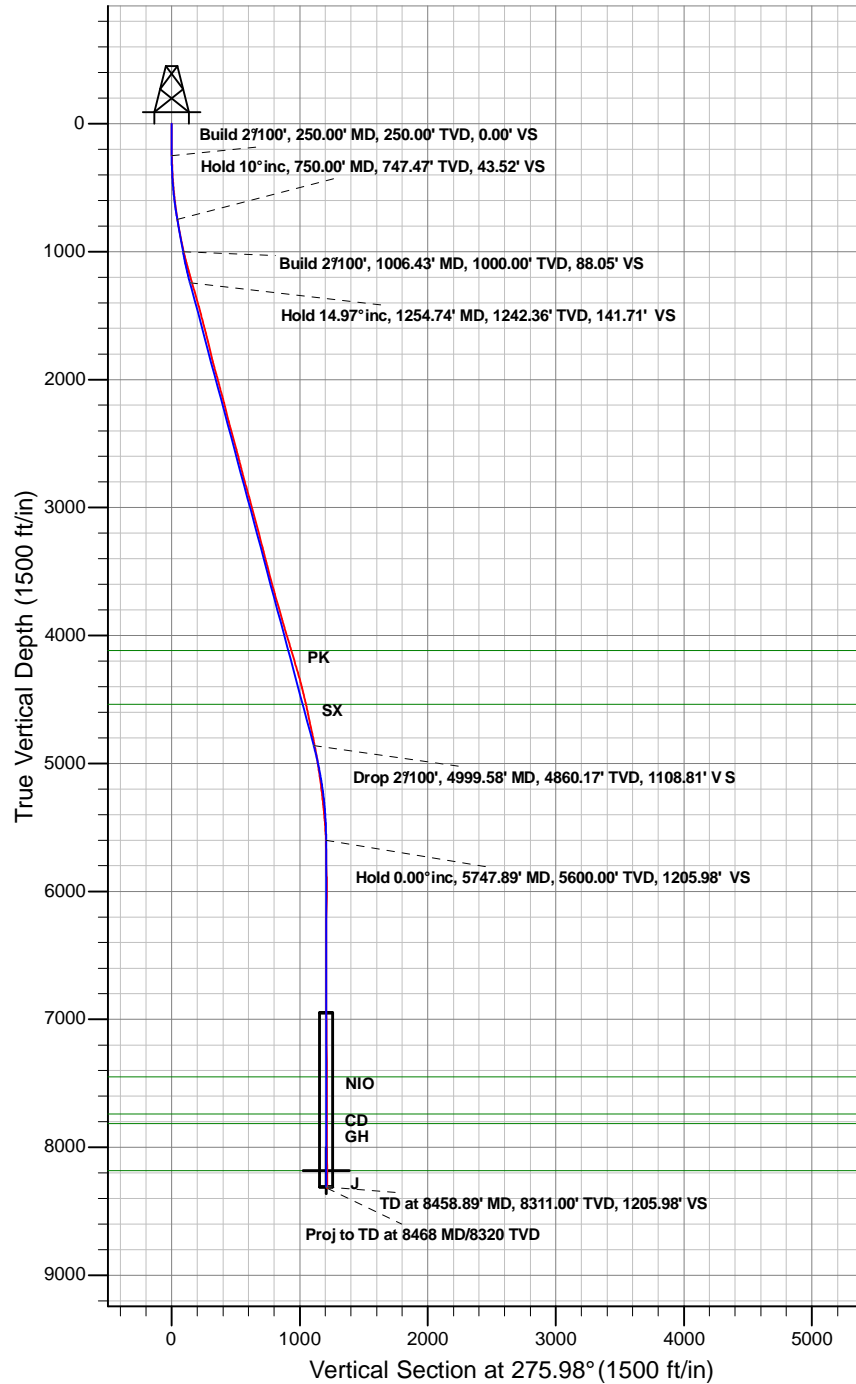




Anadarko Petroleum Corporation

Dacono 5-2 (111433)
Plan vs Actual



Anadarko Petroleum Corporation

Dacono

Dacono 11 Pad

Dacono 5-2 (111433)

Dacono 5-2

Survey: 5-2

Survey Report - Geographic

19 March, 2012

Survey Report - Geographic

Company:	Anadarko Petroleum Corporation	Local Co-ordinate Reference:	Well Dacono 5-2 (111433)
Project:	Dacono	TVD Reference:	KB @ 5031.00ft (Original Well Elev)
Site:	Dacono 11 Pad	MD Reference:	KB @ 5031.00ft (Original Well Elev)
Well:	Dacono 5-2 (111433)	North Reference:	True
Wellbore:	Dacono 5-2	Survey Calculation Method:	Minimum Curvature
Design:	Dacono 5-2	Database:	EDM5000-New

Project	Dacono		
Map System:	Universal Transverse Mercator	System Datum:	Mean Sea Level
Geo Datum:	NAD83 Colorado - HARN		
Map Zone:	Zone 13N (108 W to 102 W)		

Site	Dacono 11 Pad		
Site Position:		Northing:	14,556,637.29 usft
From:	Lat/Long	Easting:	1,647,890.09 usft
Position Uncertainty:	0.00 ft	Slot Radius:	13.20 in
		Latitude:	40.082118°N
		Longitude:	104.973282°W
		Grid Convergence:	0.02 °

Well	Dacono 5-2 (111433)		
Well Position	+N/-S	0.00 ft	Northing:
	+E/-W	0.00 ft	Easting:
Position Uncertainty	0.00 ft	Wellhead Elevation:	ft
		Latitude:	40.081899°N
		Longitude:	104.973284°W
		Ground Level:	5,016.00 ft

Wellbore	Dacono 5-2		
Magnetics	Model Name	Sample Date	Declination
			(°)
	IGRF2010	04/12/12	8.84
			Dip Angle
			(°)
			66.73
			Field Strength
			(nT)
			52,853

Design	Dacono 5-2		
Audit Notes:			
Version:	1.0	Phase:	ACTUAL
		Tie On Depth:	0.00
Vertical Section:	Depth From (TVD)	+N/-S	+E/-W
	(ft)	(ft)	(ft)
	0.00	0.00	0.00
			Direction
			(°)
			275.94

Survey Program	Date	03/19/12		
From	To	Survey (Wellbore)	Tool Name	Description
(ft)	(ft)			
183.00	8,468.00	5-2 (Dacono 5-2)	MWD	MWD - Standard

Survey									
Measured	Inclination	Azimuth	Vertical	+N/-S	+E/-W	Map	Map	Latitude	Longitude
Depth	(°)	(°)	Depth	(ft)	(ft)	Northing	Easting		
(ft)			(ft)			(usft)	(usft)		
0.00	0.00	0.00	0.00	0.00	0.00	14,556,557.54	1,647,889.56	40.081899°N	104.973284°W
183.00	0.62	351.40	183.00	0.98	-0.15	14,556,558.52	1,647,889.41	40.081902°N	104.973285°W
276.00	1.32	303.80	275.98	2.07	-1.11	14,556,559.61	1,647,888.44	40.081905°N	104.973288°W
371.00	2.99	280.38	370.91	3.13	-4.46	14,556,560.67	1,647,885.10	40.081908°N	104.973300°W
456.00	4.09	268.21	455.75	3.43	-9.67	14,556,560.97	1,647,879.89	40.081909°N	104.973319°W
542.00	5.89	265.09	541.42	2.96	-17.13	14,556,560.49	1,647,872.42	40.081907°N	104.973346°W
628.00	7.38	262.98	626.84	1.91	-27.01	14,556,559.44	1,647,862.55	40.081904°N	104.973381°W
713.00	8.70	267.11	711.01	0.91	-38.85	14,556,558.44	1,647,850.71	40.081902°N	104.973423°W
799.00	10.02	270.45	795.86	0.65	-52.83	14,556,558.17	1,647,836.73	40.081901°N	104.973473°W
912.00	11.38	280.38	906.90	2.73	-73.63	14,556,560.25	1,647,815.93	40.081907°N	104.973547°W
1,066.00	14.11	282.32	1,057.10	9.48	-106.92	14,556,566.98	1,647,782.64	40.081925°N	104.973667°W
1,151.00	16.08	276.38	1,139.16	13.00	-128.74	14,556,570.50	1,647,760.81	40.081935°N	104.973745°W

Survey Report - Geographic

Company:	Anadarko Petroleum Corporation	Local Co-ordinate Reference:	Well Dacono 5-2 (111433)
Project:	Dacono	TVD Reference:	KB @ 5031.00ft (Original Well Elev)
Site:	Dacono 11 Pad	MD Reference:	KB @ 5031.00ft (Original Well Elev)
Well:	Dacono 5-2 (111433)	North Reference:	True
Wellbore:	Dacono 5-2	Survey Calculation Method:	Minimum Curvature
Design:	Dacono 5-2	Database:	EDM5000-New

Survey									
Measured Depth (ft)	Inclination (°)	Azimuth (°)	Vertical Depth (ft)	+N/-S (ft)	+E/-W (ft)	Map Northing (usft)	Map Easting (usft)	Latitude	Longitude
1,237.00	14.99	274.89	1,222.02	15.27	-151.66	14,556,572.76	1,647,737.89	40.081941°N	104.973826°W
1,322.00	16.30	274.58	1,303.87	17.16	-174.51	14,556,574.64	1,647,715.05	40.081946°N	104.973908°W
1,408.00	16.22	274.41	1,386.43	19.04	-198.51	14,556,576.52	1,647,691.04	40.081951°N	104.973994°W
1,494.00	14.90	273.79	1,469.28	20.70	-221.52	14,556,578.17	1,647,668.03	40.081956°N	104.974076°W
1,579.00	14.59	273.39	1,551.48	22.05	-243.11	14,556,579.52	1,647,646.44	40.081960°N	104.974153°W
1,665.00	14.81	275.28	1,634.66	23.71	-264.87	14,556,581.16	1,647,624.68	40.081964°N	104.974231°W
1,750.00	13.40	271.02	1,717.10	24.88	-285.54	14,556,582.33	1,647,604.02	40.081967°N	104.974305°W
1,836.00	13.40	275.42	1,800.76	26.00	-305.42	14,556,583.45	1,647,584.13	40.081970°N	104.974376°W
1,921.00	14.90	278.49	1,883.18	28.54	-326.04	14,556,585.98	1,647,563.51	40.081977°N	104.974450°W
2,007.00	15.82	277.00	1,966.11	31.60	-348.61	14,556,589.04	1,647,540.94	40.081986°N	104.974531°W
2,092.00	14.59	278.32	2,048.13	34.57	-370.70	14,556,591.99	1,647,518.85	40.081994°N	104.974610°W
2,178.00	15.60	277.39	2,131.16	37.62	-392.89	14,556,595.04	1,647,496.66	40.082002°N	104.974689°W
2,263.00	13.89	274.10	2,213.36	39.82	-414.40	14,556,597.23	1,647,475.15	40.082008°N	104.974766°W
2,349.00	14.19	275.11	2,296.79	41.50	-435.19	14,556,598.90	1,647,454.35	40.082013°N	104.974840°W
2,434.00	15.38	274.19	2,378.98	43.25	-456.81	14,556,600.65	1,647,432.73	40.082018°N	104.974917°W
2,520.00	15.29	272.91	2,461.92	44.66	-479.51	14,556,602.05	1,647,410.03	40.082022°N	104.974999°W
2,605.00	15.21	272.38	2,543.92	45.69	-501.85	14,556,603.08	1,647,387.70	40.082025°N	104.975078°W
2,691.00	14.59	279.02	2,627.04	47.86	-523.82	14,556,605.24	1,647,365.73	40.082031°N	104.975157°W
2,776.00	13.80	281.00	2,709.44	51.47	-544.34	14,556,608.84	1,647,345.20	40.082040°N	104.975230°W
2,862.00	15.69	276.38	2,792.61	54.72	-565.97	14,556,612.09	1,647,323.57	40.082049°N	104.975308°W
2,947.00	16.39	277.09	2,874.30	57.48	-589.29	14,556,614.84	1,647,300.25	40.082057°N	104.975391°W
3,033.00	14.72	277.09	2,957.15	60.32	-612.18	14,556,617.68	1,647,277.36	40.082065°N	104.975473°W
3,118.00	14.90	277.79	3,039.32	63.14	-633.72	14,556,620.49	1,647,255.82	40.082072°N	104.975550°W
3,204.00	14.99	278.01	3,122.41	66.19	-655.69	14,556,623.53	1,647,233.85	40.082081°N	104.975628°W
3,289.00	14.90	278.32	3,204.54	69.30	-677.39	14,556,626.63	1,647,212.15	40.082089°N	104.975706°W
3,375.00	14.59	278.58	3,287.71	72.51	-699.04	14,556,629.84	1,647,190.50	40.082098°N	104.975783°W
3,460.00	14.19	274.58	3,370.04	74.94	-720.01	14,556,632.27	1,647,169.53	40.082105°N	104.975858°W
3,546.00	14.81	267.68	3,453.31	75.34	-741.50	14,556,632.66	1,647,148.03	40.082106°N	104.975935°W
3,631.00	14.81	271.59	3,535.49	75.20	-763.22	14,556,632.51	1,647,126.32	40.082106°N	104.976013°W
3,717.00	15.51	273.09	3,618.49	76.13	-785.69	14,556,633.43	1,647,103.85	40.082108°N	104.976093°W
3,802.00	15.82	276.30	3,700.34	78.01	-808.55	14,556,635.31	1,647,080.98	40.082113°N	104.976175°W
3,887.00	15.91	275.11	3,782.10	80.32	-831.67	14,556,637.61	1,647,057.86	40.082120°N	104.976258°W
3,972.00	16.00	275.50	3,863.83	82.48	-854.94	14,556,639.76	1,647,034.60	40.082126°N	104.976341°W
4,057.00	16.48	271.20	3,945.44	83.86	-878.65	14,556,641.13	1,647,010.88	40.082129°N	104.976425°W
4,143.00	17.09	270.01	4,027.77	84.11	-903.49	14,556,641.38	1,646,986.05	40.082130°N	104.976514°W
4,228.00	16.61	268.52	4,109.12	83.80	-928.12	14,556,641.06	1,646,961.42	40.082129°N	104.976602°W
4,313.00	16.61	269.70	4,190.58	83.42	-952.41	14,556,640.68	1,646,937.12	40.082128°N	104.976689°W
4,399.00	16.39	272.38	4,273.04	83.86	-976.83	14,556,641.11	1,646,912.71	40.082129°N	104.976776°W
4,484.00	15.21	270.10	4,354.82	84.38	-999.96	14,556,641.62	1,646,889.57	40.082131°N	104.976859°W
4,569.00	13.89	274.41	4,437.10	85.19	-1,021.29	14,556,642.42	1,646,868.25	40.082133°N	104.976935°W
4,655.00	13.01	277.09	4,520.74	87.17	-1,041.18	14,556,644.40	1,646,848.35	40.082138°N	104.977007°W
4,740.00	11.69	275.90	4,603.77	89.24	-1,059.25	14,556,646.46	1,646,830.29	40.082144°N	104.977071°W
4,826.00	12.22	283.19	4,687.91	92.21	-1,076.77	14,556,649.43	1,646,812.76	40.082152°N	104.977134°W
4,911.00	12.08	284.21	4,771.01	96.45	-1,094.16	14,556,653.66	1,646,795.38	40.082164°N	104.977196°W
4,997.00	11.12	283.51	4,855.25	100.60	-1,110.94	14,556,657.80	1,646,778.59	40.082175°N	104.977256°W
5,082.00	10.02	283.11	4,938.81	104.19	-1,126.12	14,556,661.39	1,646,763.41	40.082185°N	104.977310°W
5,168.00	8.70	283.59	5,023.66	107.41	-1,139.72	14,556,664.61	1,646,749.80	40.082194°N	104.977359°W
5,253.00	7.78	283.28	5,107.78	110.25	-1,151.57	14,556,667.44	1,646,737.96	40.082202°N	104.977401°W
5,339.00	7.29	283.50	5,193.04	112.86	-1,162.54	14,556,670.05	1,646,726.98	40.082209°N	104.977440°W
5,424.00	6.50	284.82	5,277.42	115.35	-1,172.44	14,556,672.53	1,646,717.09	40.082216°N	104.977476°W
5,510.00	5.71	284.38	5,362.93	117.65	-1,181.29	14,556,674.84	1,646,708.24	40.082222°N	104.977507°W
5,595.00	5.01	287.81	5,447.56	119.84	-1,188.92	14,556,677.02	1,646,700.61	40.082228°N	104.977535°W
5,681.00	3.52	288.51	5,533.32	121.83	-1,195.00	14,556,679.01	1,646,694.53	40.082234°N	104.977556°W
5,766.00	1.41	273.09	5,618.24	122.71	-1,198.52	14,556,679.89	1,646,691.01	40.082236°N	104.977569°W
5,852.00	1.19	267.59	5,704.22	122.73	-1,200.47	14,556,679.91	1,646,689.06	40.082236°N	104.977576°W

Survey Report - Geographic

Company:	Anadarko Petroleum Corporation	Local Co-ordinate Reference:	Well Dacono 5-2 (111433)
Project:	Dacono	TVD Reference:	KB @ 5031.00ft (Original Well Elev)
Site:	Dacono 11 Pad	MD Reference:	KB @ 5031.00ft (Original Well Elev)
Well:	Dacono 5-2 (111433)	North Reference:	True
Wellbore:	Dacono 5-2	Survey Calculation Method:	Minimum Curvature
Design:	Dacono 5-2	Database:	EDM5000-New

Survey										
Measured Depth (ft)	Inclination (°)	Azimuth (°)	Vertical Depth (ft)	+N/-S (ft)	+E/-W (ft)	Map Northing (usft)	Map Easting (usft)	Latitude	Longitude	
5,937.00	1.01	278.58	5,789.20	122.80	-1,202.09	14,556,679.98	1,646,687.44	40.082236°N	104.977582°W	
6,023.00	1.10	298.62	5,875.19	123.31	-1,203.56	14,556,680.49	1,646,685.96	40.082238°N	104.977587°W	
6,108.00	0.70	20.40	5,960.18	124.19	-1,204.10	14,556,681.37	1,646,685.43	40.082240°N	104.977589°W	
6,194.00	0.79	35.91	6,046.17	125.16	-1,203.57	14,556,682.34	1,646,685.96	40.082243°N	104.977587°W	
6,279.00	0.88	59.69	6,131.16	125.97	-1,202.66	14,556,683.14	1,646,686.86	40.082245°N	104.977584°W	
6,365.00	0.70	76.78	6,217.16	126.42	-1,201.58	14,556,683.60	1,646,687.95	40.082246°N	104.977580°W	
6,450.00	0.79	74.50	6,302.15	126.70	-1,200.51	14,556,683.87	1,646,689.02	40.082247°N	104.977576°W	
6,536.00	0.31	26.29	6,388.14	127.06	-1,199.83	14,556,684.24	1,646,689.69	40.082248°N	104.977574°W	
6,621.00	0.40	15.43	6,473.14	127.56	-1,199.65	14,556,684.73	1,646,689.87	40.082249°N	104.977573°W	
6,707.00	0.48	347.31	6,559.14	128.20	-1,199.65	14,556,685.37	1,646,689.87	40.082251°N	104.977573°W	
6,835.00	0.48	337.69	6,687.14	129.21	-1,199.97	14,556,686.39	1,646,689.55	40.082254°N	104.977574°W	
6,963.00	0.70	338.52	6,815.13	130.44	-1,200.46	14,556,687.62	1,646,689.06	40.082257°N	104.977576°W	
7,092.00	0.48	324.81	6,944.12	131.61	-1,201.06	14,556,688.79	1,646,688.46	40.082260°N	104.977578°W	
7,220.00	0.62	319.89	7,072.12	132.58	-1,201.82	14,556,689.76	1,646,687.70	40.082263°N	104.977581°W	
7,348.00	0.48	324.59	7,200.11	133.55	-1,202.57	14,556,690.73	1,646,686.95	40.082266°N	104.977584°W	
7,476.00	0.48	339.88	7,328.11	134.49	-1,203.07	14,556,691.67	1,646,686.45	40.082268°N	104.977585°W	
7,605.00	0.40	299.10	7,457.10	135.21	-1,203.65	14,556,692.39	1,646,685.87	40.082270°N	104.977587°W	
7,733.00	0.22	301.78	7,585.10	135.56	-1,204.25	14,556,692.74	1,646,685.27	40.082271°N	104.977590°W	
7,861.00	0.22	333.82	7,713.10	135.91	-1,204.57	14,556,693.09	1,646,684.95	40.082272°N	104.977591°W	
7,989.00	0.40	5.11	7,841.10	136.58	-1,204.63	14,556,693.75	1,646,684.89	40.082274°N	104.977591°W	
8,117.00	0.31	346.30	7,969.10	137.36	-1,204.68	14,556,694.54	1,646,684.84	40.082276°N	104.977591°W	
8,246.00	0.31	309.78	8,098.09	137.92	-1,205.03	14,556,695.10	1,646,684.49	40.082278°N	104.977592°W	
8,291.00	0.31	309.78	8,143.09	138.08	-1,205.21	14,556,695.25	1,646,684.30	40.082278°N	104.977593°W	
8,468.00	0.31	309.78	8,320.09	138.69	-1,205.95	14,556,695.87	1,646,683.57	40.082280°N	104.977596°W	
Proj to TD at 8468 MD/8320 TVD										

Survey Annotations					
Measured Depth (ft)	Vertical Depth (ft)	Local Coordinates		Comment	
		+N/-S (ft)	+E/-W (ft)		
8,468.00	8,320.09	138.69	-1,205.95	Proj to TD at 8468 MD/8320 TVD	

Checked By: _____ Approved By: _____ Date: _____