

---

**WPX ENERGY ROCKY MOUNTAIN LLC-EBUS**

---

**SG 434-27  
GRAND VALLEY  
Garfield County , Colorado**

**Cement Surface Casing**  
**13-Jun-2012**

**Post Job Summary**

## The Road to Excellence Starts with Safety

The Road to Excellence Starts With Safety			
Sold To #: 300721	Ship To #: 2932836	Quote #:	Sales Order #: 9588231
Customer: WPX ENERGY ROCKY MOUNTAIN LLC-EBUS		Customer Rep: Dunihoo, Al	
Well Name: SG		Well #: 434-27	API/UWI #:
Field: GRAND VALLEY	City (SAP): PARACHUTE	County/Parish: Garfield	State: Colorado
Contractor: NABORS 573		Rig/Platform Name/Num: NAB 573	
Job Purpose: Cement Surface Casing			
Well Type: Development Well		Job Type: Cement Surface Casing	
Sales Person: MAYO, MARK		Srvc Supervisor: MAGERS, MICHAEL	MBU ID Emp #: 339439

### Job Personnel

HES Emp Name	Exp Hrs	Emp #	HES Emp Name	Exp Hrs	Emp #	HES Emp Name	Exp Hrs	Emp #
EICKHOFF, ROBERT Edward	7	495311	MAGERS, MICHAEL Gerard	7	339439	SINCLAIR, DAN J	7	338784
WYCKOFF, RYAN Scott	7	476117						

### Equipment

HES Unit #	Distance-1 way	HES Unit #	Distance-1 way	HES Unit #	Distance-1 way	HES Unit #	Distance-1 way
10248065	60 mile	10551730C	60 mile	10565341	60 mile	10973571	60 mile
11259886	60 mile	11808841	60 mile				

### Job Hours

Date	On Location Hours	Operating Hours	Date	On Location Hours	Operating Hours	Date	On Location Hours	Operating Hours
06/13/2012	7	1						
TOTAL	Total is the sum of each column separately							

### Job

Formation Name	Formation Depth (MD)	Top	Bottom	Form Type	Job depth MD	Job Depth TVD	Water Depth	Perforation Depth (MD)	From	To	Called Out	Date	Time	Time Zone
				BHST	1280. ft	1280. ft						12 - Jun - 2012	20:30	MST
											On Location	13 - Jun - 2012	00:01	MST
											Job Started	13 - Jun - 2012	07:13	MST
											Job Completed	13 - Jun - 2012	08:16	MST
											Departed Loc	13 - Jun - 2012	09:00	MST

### Well Data

Description	New / Used	Max pressure psig	Size in	ID in	Weight lbm/ft	Thread	Grade	Top MD ft	Bottom MD ft	Top TVD ft	Bottom TVD ft
-------------	------------	-------------------	---------	-------	---------------	--------	-------	-----------	--------------	------------	---------------

### Sales/Rental/3<sup>rd</sup> Party (HES)

Description	Qty	Qty uom	Depth	Supplier
PLUG,CMTG,TOP,9 5/8,HWE,8.16 MIN/9.06 MA	1	EA		

### Tools and Accessories

Type	Size	Qty	Make	Depth	Type	Size	Qty	Make	Depth	Type	Size	Qty	Make
Guide Shoe					Packer					Top Plug	9.625	1	HES
Float Shoe					Bridge Plug					Bottom Plug			
Float Collar					Retainer					SSR plug set			
Insert Float										Plug Container	9.625	1	HES
Stage Tool										Centralizers			

### Miscellaneous Materials

Gelling Agt	Conc	Surfactant	Conc	Acid Type	Qty	Conc	%
Treatment Fld	Conc	Inhibitor	Conc	Sand Type	Size	Qty	

### Fluid Data

Fluid Data									
Stage/Plug #: 1									
Fluid #	Stage Type	Fluid Name	Qty	Qty uom	Mixing Density lbm/gal	Yield ft3/sk	Mix Fluid Gal/sk	Rate bbl/min	Total Mix Fluid Gal/sk

Stage/Plug #: 1										
Fluid #	Stage Type	Fluid Name	Qty	Qty uom	Mixing Density lbm/gal	Yield ft <sup>3</sup> /sk	Mix Fluid Gal/sk	Rate bbl/min	Total Mix Fluid Gal/sk	
1	Fresh Water		20.00	bbl	8.33	.0	.0	.0		
2	Lead Cement	VERSACEM (TM) SYSTEM (452010)	185.0	sacks	12.3	2.38	13.75		13.75	
3	Tail Cement	VERSACEM (TM) SYSTEM (452010)	160.0	sacks	12.8	2.11	11.75		11.75	
4	Displacement Fluid		96.00	bbl	8.34	.0	.0	.0		
Calculated Values		Pressures		Volumes						
Displacement	96	Shut In: Instant		Lost Returns	0	Cement Slurry	138	Pad		
Top Of Cement	SURFACE	5 Min		Cement Returns	35	Actual Displacement	96	Treatment		
Frac Gradient		15 Min		Spacers	20	Load and Breakdown		Total Job	254	
Rates										
Circulating	RIG	Mixing	8	Displacement	10/2	Avg. Job	8			
Cement Left In Pipe	Amount	46 ft	Reason	Shoe Joint						
Frac Ring # 1 @	ID	Frac ring # 2 @	ID	Frac Ring # 3 @	ID	Frac Ring # 4 @	ID			
The Information Stated Herein Is Correct				Customer Representative Signature						

*The Road to Excellence Starts with Safety*

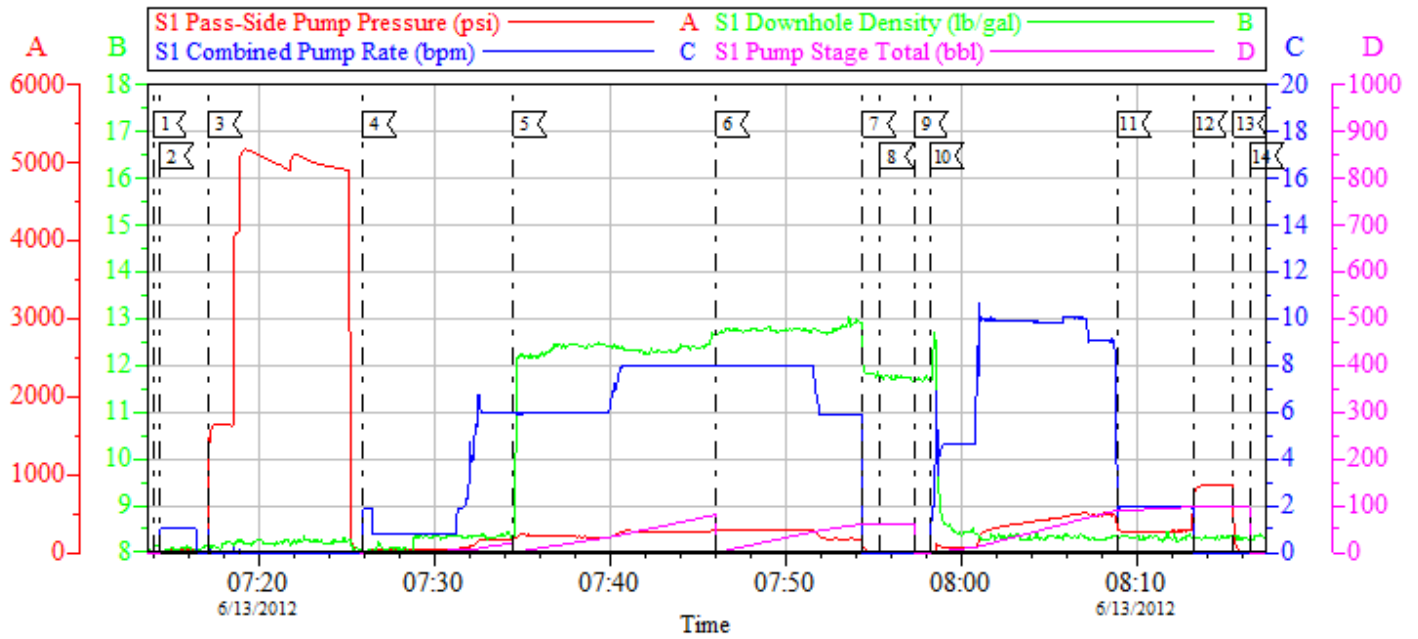
<b>Sold To #:</b> 300721		<b>Ship To #:</b> 2932836		<b>Quote #:</b>		<b>Sales Order #:</b> 9588231	
<b>Customer:</b> WPX ENERGY ROCKY MOUNTAIN LLC-EBUS				<b>Customer Rep:</b> Dunihoo, Al			
<b>Well Name:</b> SG			<b>Well #:</b> 434-27			<b>API/UWI #:</b>	
<b>Field:</b> GRAND VALLEY		<b>City (SAP):</b> PARACHUTE		<b>County/Parish:</b> Garfield		<b>State:</b> Colorado	
<b>Legal Description:</b>							
<b>Lat:</b> N 0 deg. OR N 0 deg. 0 min. 0 secs.				<b>Long:</b> E 0 deg. OR E 0 deg. 0 min. 0 secs.			
<b>Contractor:</b> NABORS 573			<b>Rig/Platform Name/Num:</b> NAB 573				
<b>Job Purpose:</b> Cement Surface Casing						<b>Ticket Amount:</b>	
<b>Well Type:</b> Development Well			<b>Job Type:</b> Cement Surface Casing				
<b>Sales Person:</b> MAYO, MARK			<b>Srv Supervisor:</b> MAGERS, MICHAEL			<b>MBU ID Emp #:</b> 339439	

Activity Description	Date/Time	Cht #	Rate bbl/ min	Volume bbl		Pressure psig		Comments
				Stage	Total	Tubing	Casing	
Call Out	06/12/2012 20:30							
Pre-Convoy Safety Meeting	06/12/2012 22:50							HES ALL PRESENT
Crew Leave Yard	06/12/2012 23:00							HES ALL PRESENT
Arrive At Loc	06/13/2012 00:01							HES ARRIVED ON LOCATION 2 HRS EARLY/TIME STARTS AT 02:00/ RIG WAS STILL DRILLING WHEN HES ARRIVED/RIG CIRCULATED FOR 1 HR WHILE CASERS RIGGED DOWN AND HES RIGGED UP AND PRIMED PUMPS
Assessment Of Location Safety Meeting	06/13/2012 00:10							LOCATION IN GOOD CONDITION/TIGHT AREA DUE TO SEM OPS EQUIPMENT
Pre-Rig Up Safety Meeting	06/13/2012 06:20							JSA ON RIGGING UP
Rig-Up Equipment	06/13/2012 06:30							1 PICKUP 1 ELITE 1 BULK TRUCKS 1 BODY LOAD
Safety Huddle	06/13/2012 07:00							RIG CREW AND HES ALL PRESENT
Start Job	06/13/2012 07:13							TD-1280 TP-1265 SJ-46 MW-10.2 CSG- 9 5/8 32# OH-13 1/2"
Other	06/13/2012 07:14		2	2			50.0	FILL LINES
Pressure Test	06/13/2012 07:17		0.5	0.5			5165.0	PSI TEST OK

Activity Description	Date/Time	Cht #	Rate bbl/min	Volume bbl		Pressure psig		Comments
				Stage	Total	Tubing	Casing	
Pump Spacer 1	06/13/2012 07:25		6	20			166.0	FRESH WATER
Pump Lead Cement	06/13/2012 07:34		8	78			284.0	VERSACEM 185 SKS 12.3 PPG 2.38 FT3/SK 13.75 GAL/SK
Pump Tail Cement	06/13/2012 07:46		8	60			301.0	VERSACEM 160 SKS 12.8 PPG 2.11 FT3/SK 11.75 GAL/SK
Shutdown	06/13/2012 07:54							WASH UP ON TOP OF PLUG
Drop Top Plug	06/13/2012 07:57							PLUG AWAY NO PROBLEMS
Pump Displacement	06/13/2012 07:58		10	86			525.0	FRESH WATER
Slow Rate	06/13/2012 08:08		2	10			260.0	GOT 35 BBLS OF CEMENT TO SURFACE
Bump Plug	06/13/2012 08:13		2	96			301.0	BUMPED PLUG
Check Floats	06/13/2012 08:15			96			859.0	FLOATS HELD/GOT 1/2 BBL BACK INTO TANK
End Job	06/13/2012 08:16							USED 80 LBS OF SUGAR
Comment	06/13/2012 08:20							HAD GOOD CIRCULATION THROUGHOUT JOB/THANKS FOR USING HES AND THE CREW OF MIKE MAGERS

# WPX SG 434-27

9.625 SURFACE



Customer: WPX NABORS 573	Job Date: 13-Jun-2012	Sales Order #: 9588231
Well Description: SG 434-27	Job Type: SURFACE	ADC Used: YES
Company Rep: AL DUNIHOO	Cement Supervisor: MIKE MAGERS	Elite # 2 ROB EICKHOFF

OptiCem v6.4.10  
13-Jun-12 08:25

<b>Sales Order #:</b> 9588231	<b>Line Item:</b> 10	<b>Survey Conducted Date:</b> 6/13/2012
<b>Customer:</b> WPX ENERGY ROCKY MOUNTAIN LLC-EBUS		<b>Job Type (BOM):</b> CMT SURFACE CASING BOM
<b>Customer Representative:</b> AL DUNIHO		<b>API / UWI: (leave blank if unknown)</b> AFEYKF0J32JXW20LAAA
<b>Well Name:</b> SG		<b>Well Number:</b> 434-27
<b>Well Type:</b> Development Well	<b>Well Country:</b> United States of America	
<b>H2S Present:</b> No	<b>Well State:</b> Colorado	<b>Well County:</b> Garfield

Dear Customer,

We hope that you were satisfied with the service quality of this job performed by Halliburton. It is the aim of our management and service personnel to deliver equipment and service of a standard unmatched in the service sector of the energy industry.

Please take the time to let us know if our performance met with your satisfaction. Please be as critical as possible to ensure we constantly improve our service. Your comments are of great value to us and are intended for the exclusive use of Halliburton.

### CUSTOMER SATISFACTION SURVEY

CATEGORY	CUSTOMER SATISFACTION RESPONSE	
Survey Conducted Date	The date the survey was conducted	6/13/2012
Survey Interviewer	The survey interviewer is the person who initiated the survey.	MICHAEL MAGERS (HX13672)
Customer Participation	Did the customer participate in this survey? (Y/N)	Yes
Customer Representative	Enter the Customer representative name	AL DUNIHO
HSE	Was our HSE performance satisfactory? Circle Y or N	Yes
Equipment	Were you satisfied with our Equipment? Circle Y or N	Yes
Personnel	Were you satisfied with our people? Circle Y or N	Yes
Customer Comment	Customer's Comment	GOOD JOB MEN

CUSTOMER SIGNATURE

<b>Sales Order #:</b> 9588231	<b>Line Item:</b> 10	<b>Survey Conducted Date:</b> 6/13/2012
<b>Customer:</b> WPX ENERGY ROCKY MOUNTAIN LLC-EBUS		<b>Job Type (BOM):</b> CMT SURFACE CASING BOM
<b>Customer Representative:</b> AL DUNIHO		<b>API / UWI: (leave blank if unknown)</b> AFEYKF0J32JXW20LAAA
<b>Well Name:</b> SG		<b>Well Number:</b> 434-27
<b>Well Type:</b> Development Well	<b>Well Country:</b> United States of America	
<b>H2S Present:</b> No	<b>Well State:</b> Colorado	<b>Well County:</b> Garfield

### KEY PERFORMANCE INDICATORS

General	
<b>Survey Conducted Date</b> The date the survey was conducted	6/13/2012

Cementing KPI Survey	
<b>Type of Job</b> Select the type of job. (Cementing or Non-Cementing)	0
<b>Select the Maximum Deviation range for this Job</b> What is the highest deviation for the job you just completed? This may not be the maximum well deviation.	Vertical
<b>Total Operating Time (hours)</b> Total Operating Hours Including Rig-up, Pumping, Rig-down. Enter in decimal format.	2
<b>HSE Incident, Accident, Injury</b> HSE Incident, Accident, Injury. This should be recordable incidents only.	No
<b>Was the job purpose achieved?</b> Was the job delivered correctly as per customer agreed design?	Yes
<b>Operating Hours (Pumping Hours)</b> Total number of hours pumping fluid on this job. Enter in decimal format.	1
<b>Customer Non-Productive Rig Time (hrs)</b> Lost time due to Halliburton in the start, execution, or completion of an ordered service or product, or delays in a follow-on service. Enter in decimal format. 0 if none.	0
<b>Type of Rig Classification Job Was Performed</b> Type Of Rig (classification) Job Was Performed On	Drilling Rig (Portable)
<b>Number Of JSAs Performed</b> Number Of Jsas Performed	4
<b>Number of Unplanned Shutdowns</b> Unplanned shutdown is when injection stops for any period of time.	0
<b>Was this a Primary Cement Job (Yes / No)</b>	Yes



<b>Sales Order #:</b> 9588231	<b>Line Item:</b> 10	<b>Survey Conducted Date:</b> 6/13/2012
<b>Customer:</b> WPX ENERGY ROCKY MOUNTAIN LLC-EBUS		<b>Job Type (BOM):</b> CMT SURFACE CASING BOM
<b>Customer Representative:</b> AL DUNIHO		<b>API / UWI: (leave blank if unknown)</b> AFEYKF0J32JXW20LAAA
<b>Well Name:</b> SG		<b>Well Number:</b> 434-27
<b>Well Type:</b> Development Well	<b>Well Country:</b> United States of America	
<b>H2S Present:</b> No	<b>Well State:</b> Colorado	<b>Well County:</b> Garfield

Primary Cement Job= Casing job, Liner job, or Tie-back job.	
<b>Did We Run Wiper Plugs?</b> Did We Run Top And Bottom Casing Wiper Plugs?	Top
<b>Mixing Density of Job Stayed in Designed Density Range (0-100%)</b> Density Range defined as +/- .20 ppg. Calculation: Total BBLs cement mixed at designed density divided by total BBLs of cement multiplied by 100	95
<b>Was Automated Density Control Used?</b> Was Automated Density Control (ADC) Used ?	Yes
<b>Pump Rate (percent) of Job Stayed At Designed Pump Rate</b> Pump Rate range defined as +/- 1bbl/min. Calculation: Total BBLs of fluid pumped at the designed rate divided by Total BBLs of fluid pumped, multiplied by 100	95
<b>Nbr of Remedial Sqz Jobs Rqd - Competition</b> Number Of Remedial Squeeze Jobs Required After Primary Job Performed By Competition	0
<b>Nbr of Remedial Plug Jobs Rqd - HES</b> Number Of Remedial Plug Jobs Needed After Primary Plug Pumped By HES	0
<b>Nbr of Remedial Sqz Jobs Rqd - HES</b> Number Of Remedial Squeeze Jobs Required After Primary Job Performed By HES	0