
WPX ENERGY ROCKY MOUNTAIN LLC-EBUS

**SG 514-27
Parachute
Garfield County , Colorado**

Cement Surface Casing
21-Jun-2012

Post Job Report

The Road to Excellence Starts with Safety

Sold To #: 300721	Ship To #: 2932418	Quote #:	Sales Order #: 9606892
Customer: WPX ENERGY ROCKY MOUNTAIN LLC-EBUS	Customer Rep: Moore, Frank		
Well Name: SG	Well #: 514-27	API/UWI #:	
Field: Parachute	City (SAP): PARACHUTE	County/Parish: Garfield	State: Colorado
Contractor: NABORS 573	Rig/Platform Name/Num: NAB 573		
Job Purpose: Cement Surface Casing			
Well Type: Development Well	Job Type: Cement Surface Casing		
Sales Person: MAYO, MARK	Srv Supervisor: NICKLE, RYON	MBU ID Emp #:	454759

Job Personnel

HES Emp Name	Exp Hrs	Emp #	HES Emp Name	Exp Hrs	Emp #	HES Emp Name	Exp Hrs	Emp #
BLUST, CHARLES Thomas	7.5	386662	NICKLE, RYON	7.5	454759	ROSE, BENJAMIN Keith	7.5	487022

Equipment

HES Unit #	Distance-1 way	HES Unit #	Distance-1 way	HES Unit #	Distance-1 way	HES Unit #	Distance-1 way
10616651C	60 mile	10783493	60 mile	10822007	60 mile	10951249	60 mile
11808827	60 mile						

Job Hours

Date	On Location Hours	Operating Hours	Date	On Location Hours	Operating Hours	Date	On Location Hours	Operating Hours
6/21/12	7.5	1						
TOTAL	Total is the sum of each column separately							

Job

Formation Name	Job	Job Times
Formation Depth (MD)	Top 0 Bottom 1170	Called Out 21 - Jun - 2012 02:00 MST
Form Type	BHST	On Location 21 - Jun - 2012 05:20 MST
Job depth MD	1170. ft	Job Started 21 - Jun - 2012 10:35 MST
Water Depth	Wk Ht Above Floor 4. ft	Job Completed 21 - Jun - 2012 11:38 GMT
Perforation Depth (MD)	From To	Departed Loc 21 - Jun - 2012 13:00 MST

Well Data

Description	New / Used	Max pressure psig	Size in	ID in	Weight lbm/ft	Thread	Grade	Top MD ft	Bottom MD ft	Top TVD ft	Bottom TVD ft
-------------	------------	-------------------	---------	-------	---------------	--------	-------	-----------	--------------	------------	---------------

Sales/Rental/3rd Party (HES)

Description	Qty	Qty uom	Depth	Supplier
PLUG,CMTG,TOP,9 5/8,HWE,8.16 MIN/9.06 MA	1	EA		

Tools and Accessories

Type	Size	Qty	Make	Depth	Type	Size	Qty	Make	Depth	Type	Size	Qty	Make
Guide Shoe					Packer					Top Plug	9.625	1	HES
Float Shoe					Bridge Plug					Bottom Plug			
Float Collar					Retainer					SSR plug set			
Insert Float										Plug Container	9.625	1	HES
Stage Tool										Centralizers			

Miscellaneous Materials

Gelling Agt	Conc	Surfactant	Conc	Acid Type	Qty	Conc	%
Treatment Fld	Conc	Inhibitor	Conc	Sand Type	Size	Qty	

Fluid Data

Stage/Plug #: 1									
Fluid #	Stage Type	Fluid Name	Qty	Qty uom	Mixing Density lbm/gal	Yield ft3/sk	Mix Fluid Gal/sk	Rate bbl/min	Total Mix Fluid Gal/sk

Stage/Plug #: 1									
Fluid #	Stage Type	Fluid Name	Qty	Qty uom	Mixing Density lbm/gal	Yield ft3/sk	Mix Fluid Gal/sk	Rate bbl/min	Total Mix Fluid Gal/sk

Stage/Plug #: 1									
1	Fresh Water		20.00	bbl	8.33	.0	.0	4	
2	Lead Cement	VERSACEM (TM) SYSTEM (452010)	160.0	sacks	12.3	2.38	13.75	7	13.75
3	Tail Cement	VERSACEM (TM) SYSTEM (452010)	160.0	sacks	12.8	2.11	11.75	7	11.75
4	Displacement Fluid		90.00	bbl	8.34	.0	.0	10	
Calculated Values		Pressures		Volumes					
Displacement	90	Shut In: Instant		Lost Returns		Cement Slurry	127.9	Pad	
Top Of Cement		5 Min		Cement Returns	30	Actual Displacement	90	Treatment	
Frac Gradient		15 Min		Spacers		Load and Breakdown		Total Job	244
Rates									
Circulating	RIG	Mixing	7	Displacement	10	Avg. Job	8.5		
Cement Left In Pipe	Amount	44.78 ft	Reason	Shoe Joint					
Frac Ring # 1 @	ID	Frac ring # 2 @	ID	Frac Ring # 3 @	ID	Frac Ring # 4 @	ID		
The Information Stated Herein Is Correct				Customer Representative Signature					

The Road to Excellence Starts with Safety

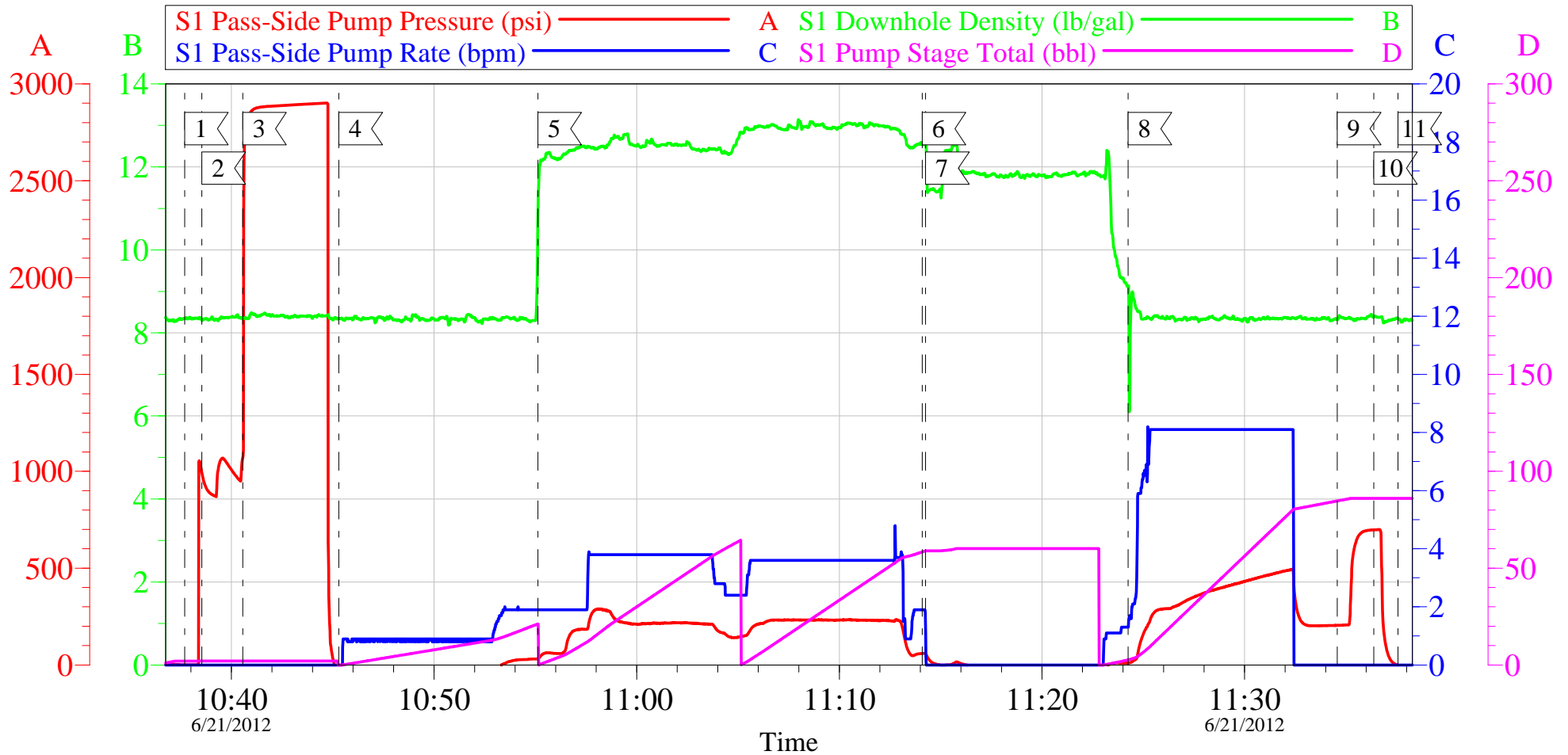
Sold To #: 300721		Ship To #: 2932418		Quote #:		Sales Order #: 9606892	
Customer: WPX ENERGY ROCKY MOUNTAIN LLC-EBUS				Customer Rep: Moore, Frank			
Well Name: SG			Well #: 514-27			API/UWI #:	
Field: Parachute		City (SAP): PARACHUTE		County/Parish: Garfield		State: Colorado	
Legal Description:							
Lat: N 0 deg. OR N 0 deg. 0 min. 0 secs.				Long: E 0 deg. OR E 0 deg. 0 min. 0 secs.			
Contractor: NABORS 573			Rig/Platform Name/Num: NAB 573				
Job Purpose: Cement Surface Casing						Ticket Amount:	
Well Type: Development Well			Job Type: Cement Surface Casing				
Sales Person: MAYO, MARK			Srvc Supervisor: NICKLE, RYON			MBU ID Emp #: 454759	

Activity Description	Date/Time	Cht #	Rate bbl/min	Volume bbl		Pressure psig		Comments
				Stage	Total	Tubing	Casing	
Call Out	06/21/2012 02:00							HES CEMENT CREW
Pre-Job Safety Meeting	06/21/2012 03:16							ALL HES CEMENT CREW, RIG CREW, COMPANY REP, AVAILABLE 3RD PARTY EE'S
Start Job	06/21/2012 03:16							TD- 1170' TP- 1221' SHOE- 44.78' OH- 13.5" SURFACE CASING- 9.625" 32.3#/FT H-40 MUD- 10 PPG
Other	06/21/2012 03:16		2	2				FILL LINES, FRESH WATER
Pressure Test	06/21/2012 03:16							STALL OUT @ PSI, HELD FOR 30 SEC. PRESSURE UP TO PSI HELD FOR 2 MIN, PRESSURE DROP TO PSI
Pump Spacer 1	06/21/2012 03:16		4	20				FRESH WATER
Pump Lead Cement	06/21/2012 03:16		8	67.8				160 SKS; 12.3 PPG, 2.38 FT3/SK, 13.75 GAL/SK
Pump Tail Cement	06/21/2012 03:16		8	60.1				160 SKS; 12.8 PPG, 2.11 FT3/SK, 11.75 GAL/SK
Shutdown	06/21/2012 03:16							WASH UP ON TOP OF PLUG PER CO REP
Drop Top Plug	06/21/2012 03:16							CO REP VERIFIED PLUG LAUNCHED
Pump Displacement	06/21/2012 03:16		10	85.6				FRESH WATER

Activity Description	Date/Time	Cht #	Rate bbl/min	Volume bbl		Pressure psig		Comments
				Stage	Total	Tubing	Casing	
Slow Rate	06/21/2012 03:16		2	10				
Bump Plug	06/21/2012 03:16							
Check Floats	06/21/2012 03:16							FLOATS HELD, RETURNED 3/4 BBLS H2O
End Job	06/21/2012 03:16							PIPE WAS NOT MOVED, GOOD RETURNS THROUGHOUT, 20 BBLS CEMENT TO SURFACE
Post-Job Safety Meeting (Pre Rig-Down)	06/21/2012 03:16							ALL HES CEMENT CREW
Pre-Convoy Safety Meeting	06/21/2012 03:16							ALL HES CEMENT CREW
Crew Leave Location	06/21/2012 03:16							THANK YOU FOR USING HALLIBURTON CEMENTING, RYON NICKLE AND CREW
Pre-Convoy Safety Meeting	06/21/2012 04:30							ALL HES CEMENT CREW
Crew Leave Yard	06/21/2012 04:45							
Arrive At Loc	06/21/2012 05:30							RIG RIGGING UP CASING CREW
Assessment Of Location Safety Meeting	06/21/2012 05:45							ALL HES CEMENT CREW
Other	06/21/2012 07:30							SPOT EQUIPMENT; 1 CEMENTERS F 550, 1 ELITE PUMPING UNIT, 1 660 BULK TRANSPORT, 1 400 BULK TRANSPORT
Pre-Rig Up Safety Meeting	06/21/2012 07:45							ALL HES CEMENT CREW

WPX-SG 514-27

Surface



Local Event Log

1 <	Start Job	10:37:41	2 <	Fill Lines	10:38:32	3 <	Pressure Test	10:40:34
4 <	Pump Spacer	10:45:18	5 <	Pump Cement	10:55:07	6 <	Shut down	11:14:05
7 <	Drop Plug	11:14:15	8 <	Pump Displacement	11:24:15	9 <	Bump Plug	11:34:35
10 <	Check Floats	11:36:22	11 <	End Job	11:37:34			

Customer: WPX
Well Description: SG 514-27
Company Rep: Frank Moore

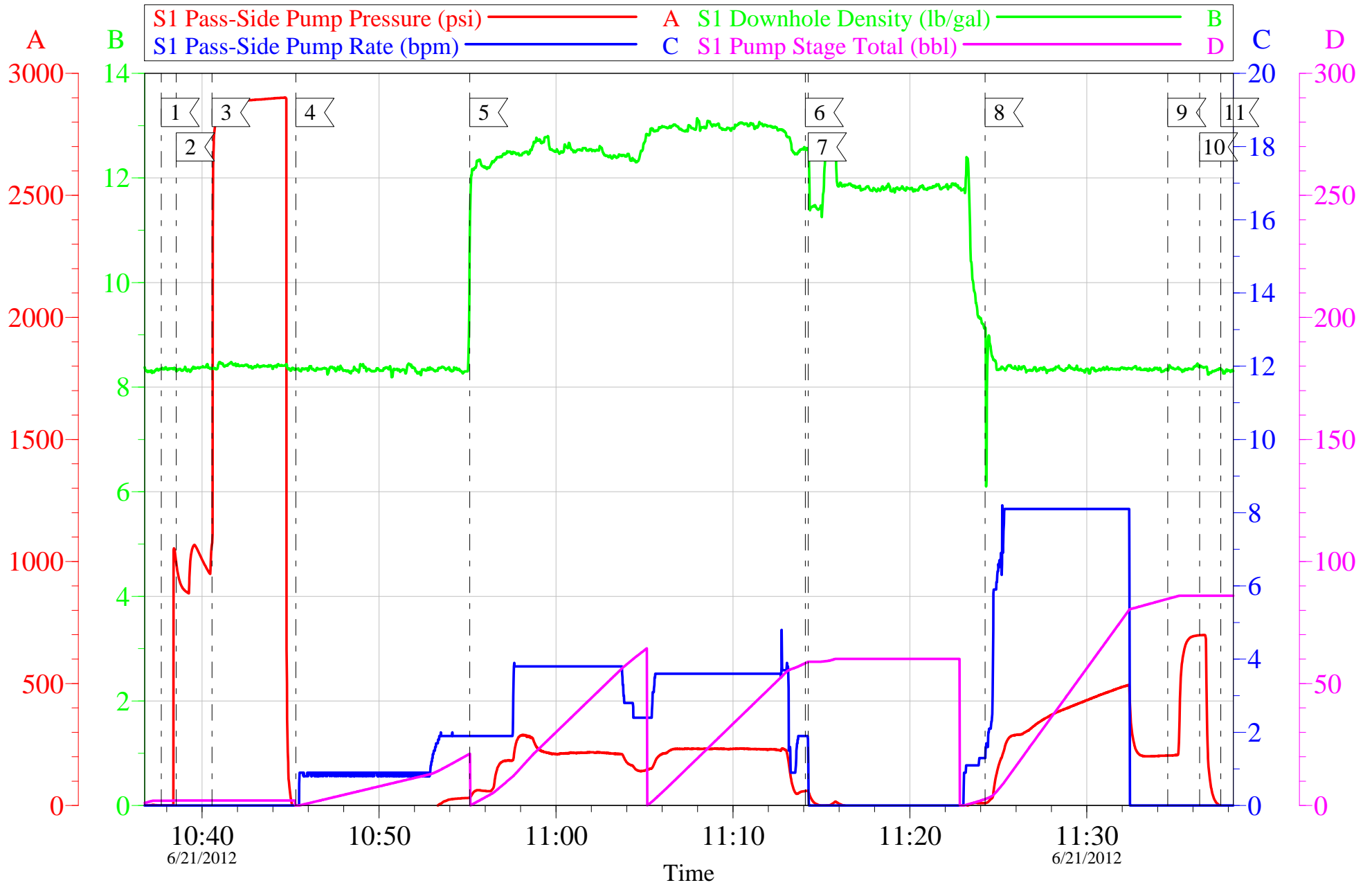
Job Date: 21-Jun-2012
Job Type: Surface
Cement Supervisor: Ryon Nickle

Sales Order #: 9606892
ADC Used: Yes
Elite # 1: Charles Blust

OptiCem v6.4.10
04-Sep-12 15:30

WPX-SG 514-27

Surface



Customer: WPX	Job Date: 21-Jun-2012	Sales Order #: 9606892
Well Description: SG 514-27	Job Type: Surface	ADC Used: Yes
Company Rep: Frank Moore	Cement Supervisor: Ryon Nickle	Elite # 1: Charles Blust

OptiCem v6.4.10
04-Sep-12 15:31

Sales Order #: 9606892	Line Item: 10	Survey Conducted Date: 6/21/2012
Customer: WPX ENERGY ROCKY MOUNTAIN LLC-EBUS		Job Type (BOM): CMT SURFACE CASING BOM
Customer Representative: FRANK MOORE		API / UWI: (leave blank if unknown) AFEYSBO2O3JB55XAAAA
Well Name: SG		Well Number: 514-27
Well Type: Development Well	Well Country: United States of America	
H2S Present: No	Well State: Colorado	Well County: Garfield

Dear Customer,

We hope that you were satisfied with the service quality of this job performed by Halliburton. It is the aim of our management and service personnel to deliver equipment and service of a standard unmatched in the service sector of the energy industry.

Please take the time to let us know if our performance met with your satisfaction. Please be as critical as possible to ensure we constantly improve our service. Your comments are of great value to us and are intended for the exclusive use of Halliburton.

CUSTOMER SATISFACTION SURVEY

CATEGORY	CUSTOMER SATISFACTION RESPONSE	
Survey Conducted Date	The date the survey was conducted	6/21/2012
Survey Interviewer	The survey interviewer is the person who initiated the survey.	RYON NICKLE (HB22175)
Customer Participation	Did the customer participate in this survey? (Y/N)	Yes
Customer Representative	Enter the Customer representative name	FRANK MOORE
HSE	Was our HSE performance satisfactory? Circle Y or N	Yes
Equipment	Were you satisfied with our Equipment? Circle Y or N	Yes
Personnel	Were you satisfied with our people? Circle Y or N	Yes
Customer Comment	Customer's Comment	

CUSTOMER SIGNATURE

Sales Order #: 9606892	Line Item: 10	Survey Conducted Date: 6/21/2012
Customer: WPX ENERGY ROCKY MOUNTAIN LLC-EBUS		Job Type (BOM): CMT SURFACE CASING BOM
Customer Representative: FRANK MOORE		API / UWI: (leave blank if unknown) AFEYSBO2O3JB55XAAAA
Well Name: SG		Well Number: 514-27
Well Type: Development Well	Well Country: United States of America	
H2S Present: No	Well State: Colorado	Well County: Garfield

KEY PERFORMANCE INDICATORS

General	
Survey Conducted Date The date the survey was conducted	6/21/2012

Cementing KPI Survey	
Type of Job Select the type of job. (Cementing or Non-Cementing)	0
Select the Maximum Deviation range for this Job What is the highest deviation for the job you just completed? This may not be the maximum well deviation.	Vertical
Total Operating Time (hours) Total Operating Hours Including Rig-up, Pumping, Rig-down. Enter in decimal format.	3
HSE Incident, Accident, Injury HSE Incident, Accident, Injury. This should be recordable incidents only.	No
Was the job purpose achieved? Was the job delivered correctly as per customer agreed design?	Yes
Operating Hours (Pumping Hours) Total number of hours pumping fluid on this job. Enter in decimal format.	1
Customer Non-Productive Rig Time (hrs) Lost time due to Halliburton in the start, execution, or completion of an ordered service or product, or delays in a follow-on service. Enter in decimal format. 0 if none.	0
Type of Rig Classification Job Was Performed Type Of Rig (classification) Job Was Performed On	Drilling Rig (Portable)
Number Of JSAs Performed Number Of Jsas Performed	5
Number of Unplanned Shutdowns Unplanned shutdown is when injection stops for any period of time.	0
Was this a Primary Cement Job (Yes / No)	Yes

Sales Order #: 9606892	Line Item: 10	Survey Conducted Date: 6/21/2012
Customer: WPX ENERGY ROCKY MOUNTAIN LLC-EBUS		Job Type (BOM): CMT SURFACE CASING BOM
Customer Representative: FRANK MOORE		API / UWI: (leave blank if unknown) AFEYSBO2O3JB55XAAAA
Well Name: SG		Well Number: 514-27
Well Type: Development Well	Well Country: United States of America	
H2S Present: No	Well State: Colorado	Well County: Garfield

Primary Cement Job= Casing job, Liner job, or Tie-back job.	
Did We Run Wiper Plugs? Did We Run Top And Bottom Casing Wiper Plugs?	Top
Mixing Density of Job Stayed in Designed Density Range (0-100%) Density Range defined as +/- .20 ppg. Calculation: Total BBLs cement mixed at designed density divided by total BBLs of cement multiplied by 100	96.5
Was Automated Density Control Used? Was Automated Density Control (ADC) Used ?	Yes
Pump Rate (percent) of Job Stayed At Designed Pump Rate Pump Rate range defined as +/- 1bbl/min. Calculation: Total BBLs of fluid pumped at the designed rate divided by Total BBLs of fluid pumped, multiplied by 100	96.5
Nbr of Remedial Sqz Jobs Rqd - Competition Number Of Remedial Squeeze Jobs Required After Primary Job Performed By Competition	0
Nbr of Remedial Plug Jobs Rqd - HES Number Of Remedial Plug Jobs Needed After Primary Plug Pumped By HES	0
Nbr of Remedial Sqz Jobs Rqd - HES Number Of Remedial Squeeze Jobs Required After Primary Job Performed By HES	0