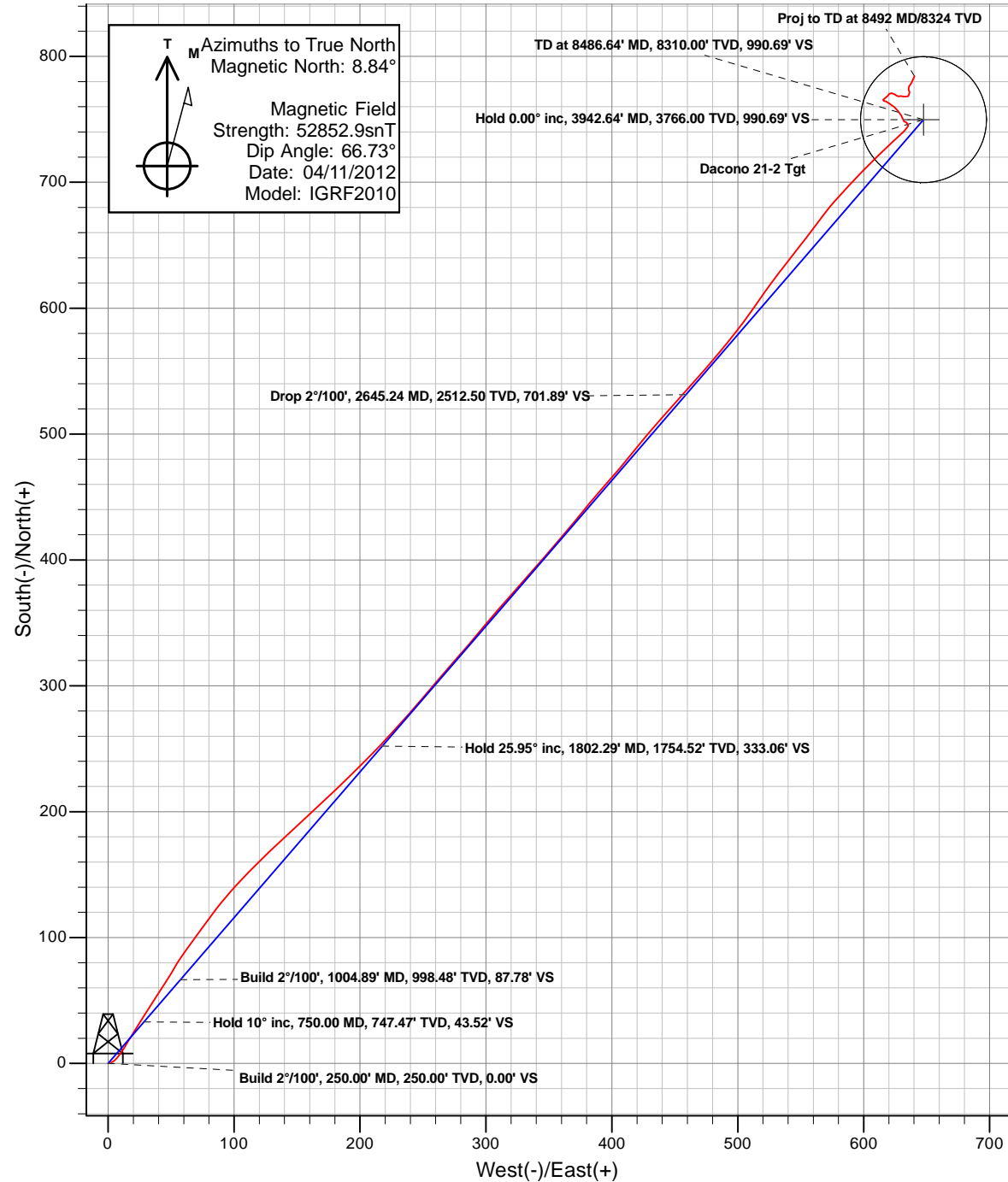
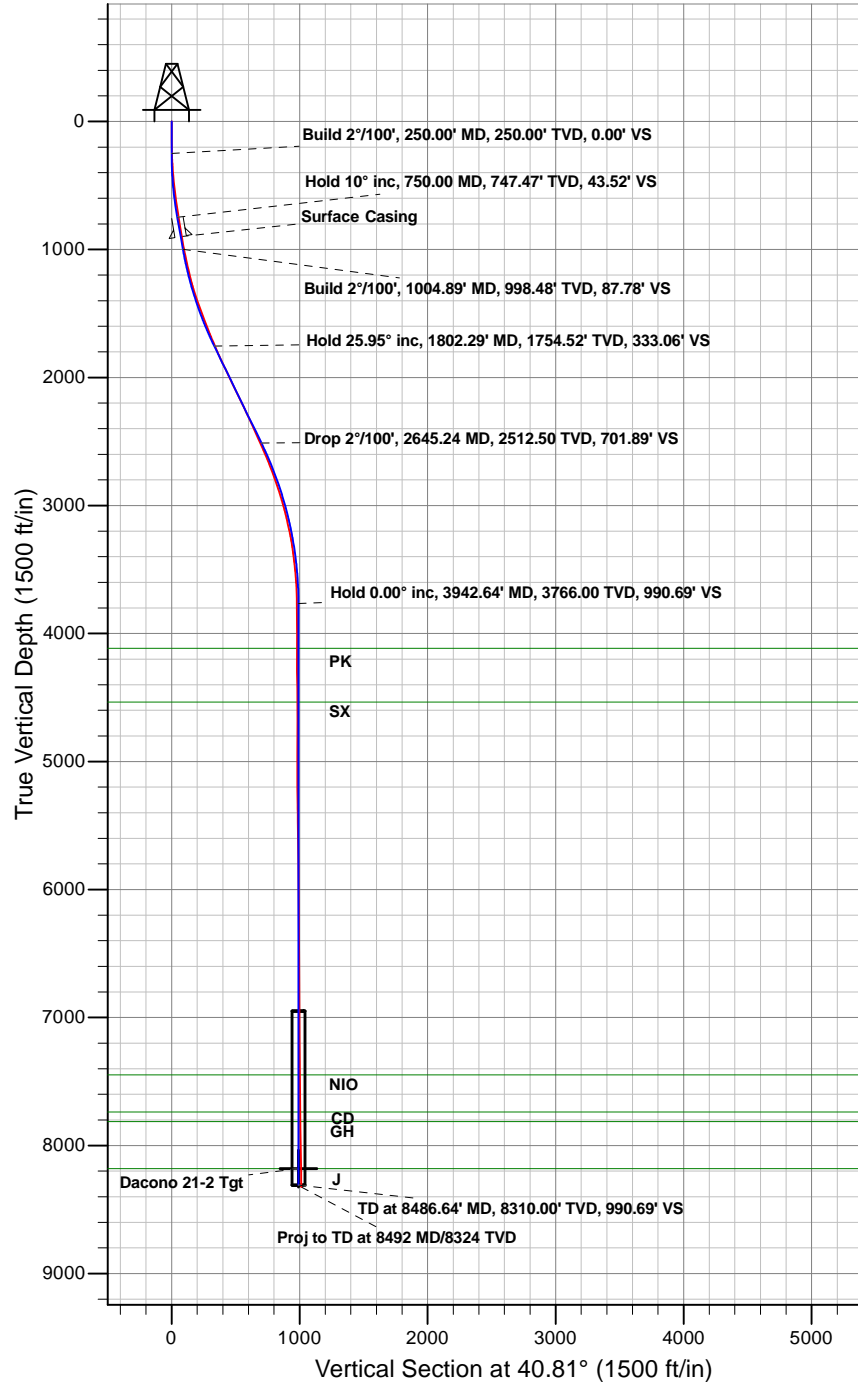




Anadarko Petroleum Corporation

Dacono 21-2 (111430)
Plan vs Actual



Anadarko Petroleum Corporation

Dacono

Dacono 11 Pad

Dacono 21-2 (111430)

Dacono 21-2

Survey: Dacono 21-2

Survey Report - Geographic

24 February, 2012

ARK Directional Services

Survey Report - Geographic

Company:	Anadarko Petroleum Corporation	Local Co-ordinate Reference:	Well Dacono 21-2 (111430)
Project:	Dacono	TVD Reference:	KB @ 5031.00ft (Original Well Elev)
Site:	Dacono 11 Pad	MD Reference:	KB @ 5031.00ft (Original Well Elev)
Well:	Dacono 21-2 (111430)	North Reference:	True
Wellbore:	Dacono 21-2	Survey Calculation Method:	Minimum Curvature
Design:	Dacono 21-2	Database:	EDM5000

Project	Dacono		
Map System:	Universal Transverse Mercator	System Datum:	Mean Sea Level
Geo Datum:	NAD83 Colorado - HARN		
Map Zone:	Zone 13N (108 W to 102 W)		

Site	Dacono 11 Pad				
Site Position:		Northing:	14,556,637.29 usft	Latitude:	40.082118°N
From:	Lat/Long	Easting:	1,647,890.09 usft	Longitude:	104.973282°W
Position Uncertainty:	0.00 ft	Slot Radius:	13.20 in	Grid Convergence:	0.02 °

Well	Dacono 21-2 (111430)					
Well Position	+N/-S	0.00 ft	Northing:	14,556,597.23 usft	Latitude:	40.082008°N
	+E/-W	0.00 ft	Easting:	1,647,889.83 usft	Longitude:	104.973283°W
Position Uncertainty		0.00 ft	Wellhead Elevation:	ft	Ground Level:	5,016.00 ft

Wellbore	Dacono 21-2				
Magnetics	Model Name	Sample Date	Declination (°)	Dip Angle (°)	Field Strength (nT)
	IGRF2010	04/11/12	8.84	66.73	52,853

Design	Dacono 21-2				
Audit Notes:					
Version:	1.0	Phase:	ACTUAL	Tie On Depth:	0.00
Vertical Section:	Depth From (TVD) (ft)	+N/-S (ft)	+E/-W (ft)	Direction (°)	
	0.00	0.00	0.00	34.95	

Survey Program	Date	02/24/12			
From (ft)	To (ft)	Survey (Wellbore)	Tool Name	Description	
141.00	8,492.00	Dacono 21-2 (Dacono 21-2)	MWD	MWD - Standard	

Survey									
Measured Depth (ft)	Inclination (°)	Azimuth (°)	Vertical Depth (ft)	+N/-S (ft)	+E/-W (ft)	Map Northing (usft)	Map Easting (usft)	Latitude	Longitude
0.00	0.00	0.00	0.00	0.00	0.00	14,556,597.23	1,647,889.83	40.082008°N	104.973283°W
2.96	0.01	85.35	2.96	0.00	0.00	14,556,597.23	1,647,889.83	40.082008°N	104.973283°W
21-2 LW									
141.00	0.48	85.35	141.00	0.05	0.59	14,556,597.28	1,647,890.41	40.082008°N	104.973281°W
244.00	1.89	67.64	243.97	0.73	2.59	14,556,597.96	1,647,892.42	40.082010°N	104.973274°W
327.00	2.99	48.13	326.90	2.69	5.47	14,556,599.93	1,647,895.29	40.082016°N	104.973264°W
403.00	4.61	36.53	402.73	6.47	8.76	14,556,603.71	1,647,898.59	40.082026°N	104.973252°W
488.00	6.02	31.03	487.36	13.04	13.09	14,556,610.27	1,647,902.92	40.082044°N	104.973236°W
574.00	7.78	32.13	572.74	21.83	18.51	14,556,619.07	1,647,908.33	40.082068°N	104.973217°W
659.00	8.61	30.86	656.87	32.17	24.84	14,556,629.40	1,647,914.65	40.082096°N	104.973194°W
745.00	8.79	34.33	741.88	43.12	31.85	14,556,640.36	1,647,921.66	40.082127°N	104.973169°W
830.00	9.32	31.78	825.82	54.33	39.13	14,556,651.57	1,647,928.94	40.082157°N	104.973143°W

ARK Directional Services

Survey Report - Geographic

Company:	Anadarko Petroleum Corporation	Local Co-ordinate Reference:	Well Dacono 21-2 (111430)
Project:	Dacono	TVD Reference:	KB @ 5031.00ft (Original Well Elev)
Site:	Dacono 11 Pad	MD Reference:	KB @ 5031.00ft (Original Well Elev)
Well:	Dacono 21-2 (111430)	North Reference:	True
Wellbore:	Dacono 21-2	Survey Calculation Method:	Minimum Curvature
Design:	Dacono 21-2	Database:	EDM5000

Survey									
Measured Depth (ft)	Inclination (°)	Azimuth (°)	Vertical Depth (ft)	+N/-S (ft)	+E/-W (ft)	Map Northing (usft)	Map Easting (usft)	Latitude	Longitude
889.00	10.02	32.35	883.98	62.73	44.40	14,556,659.97	1,647,934.20	40.082180°N	104.973125°W
946.00	10.02	32.35	940.11	71.11	49.70	14,556,668.35	1,647,939.51	40.082203°N	104.973106°W
971.00	10.20	29.54	964.72	74.87	51.96	14,556,672.12	1,647,941.76	40.082214°N	104.973098°W
1,056.00	12.30	35.43	1,048.09	88.80	60.92	14,556,686.05	1,647,950.72	40.082252°N	104.973065°W
1,142.00	12.48	36.66	1,132.09	103.72	71.78	14,556,700.97	1,647,961.57	40.082293°N	104.973027°W
1,227.00	13.58	36.35	1,214.90	119.12	83.17	14,556,716.38	1,647,972.97	40.082335°N	104.972986°W
1,313.00	17.01	40.83	1,297.84	136.78	97.39	14,556,734.04	1,647,987.17	40.082384°N	104.972935°W
1,398.00	18.59	45.36	1,378.77	155.71	115.16	14,556,752.97	1,648,004.94	40.082436°N	104.972872°W
1,484.00	20.61	46.85	1,459.79	175.69	135.96	14,556,772.96	1,648,025.73	40.082491°N	104.972797°W
1,569.00	21.01	46.85	1,539.24	196.35	157.99	14,556,793.62	1,648,047.76	40.082547°N	104.972718°W
1,655.00	21.18	47.03	1,619.48	217.48	180.61	14,556,814.76	1,648,070.37	40.082605°N	104.972638°W
1,741.00	22.72	44.66	1,699.24	239.88	203.65	14,556,837.17	1,648,093.40	40.082667°N	104.972555°W
1,826.00	23.38	42.55	1,777.46	263.98	226.59	14,556,861.28	1,648,116.34	40.082733°N	104.972473°W
1,912.00	24.79	40.13	1,855.97	290.34	249.75	14,556,887.65	1,648,139.49	40.082805°N	104.972390°W
1,997.00	26.10	41.23	1,932.72	318.03	273.56	14,556,915.34	1,648,163.29	40.082881°N	104.972305°W
2,083.00	25.18	39.73	2,010.26	346.33	297.73	14,556,943.65	1,648,187.45	40.082959°N	104.972219°W
2,168.00	25.80	41.62	2,086.98	374.06	321.57	14,556,971.39	1,648,211.28	40.083035°N	104.972134°W
2,254.00	26.28	41.23	2,164.25	402.37	346.55	14,556,999.71	1,648,236.25	40.083113°N	104.972044°W
2,341.00	25.31	39.03	2,242.58	431.30	370.95	14,557,028.65	1,648,260.65	40.083193°N	104.971957°W
2,426.00	25.18	41.45	2,319.47	458.97	394.37	14,557,056.32	1,648,284.05	40.083268°N	104.971873°W
2,512.00	24.08	38.63	2,397.65	486.39	417.43	14,557,083.75	1,648,307.11	40.083344°N	104.971791°W
2,597.00	23.91	41.54	2,475.30	512.83	439.68	14,557,110.19	1,648,329.35	40.083416°N	104.971711°W
2,683.00	24.21	41.76	2,553.83	539.03	462.98	14,557,136.40	1,648,352.65	40.083488°N	104.971628°W
2,768.00	22.50	40.13	2,631.86	564.47	485.07	14,557,161.84	1,648,374.73	40.083558°N	104.971549°W
2,853.00	20.92	36.35	2,710.84	589.13	504.55	14,557,186.51	1,648,394.20	40.083626°N	104.971479°W
2,939.00	19.82	34.94	2,791.46	613.45	522.00	14,557,210.83	1,648,411.65	40.083693°N	104.971417°W
3,024.00	18.02	38.55	2,871.86	635.55	538.45	14,557,232.94	1,648,428.09	40.083753°N	104.971358°W
3,111.00	16.92	37.23	2,954.85	656.15	554.50	14,557,253.55	1,648,444.13	40.083810°N	104.971301°W
3,197.00	14.59	37.45	3,037.61	674.72	568.66	14,557,272.12	1,648,458.28	40.083861°N	104.971250°W
3,282.00	12.70	43.25	3,120.22	690.02	581.57	14,557,287.43	1,648,471.19	40.083903°N	104.971204°W
3,368.00	12.08	43.25	3,204.21	703.46	594.22	14,557,300.87	1,648,483.83	40.083940°N	104.971159°W
3,453.00	9.58	43.82	3,287.69	715.05	605.21	14,557,312.46	1,648,494.82	40.083972°N	104.971120°W
3,539.00	7.29	48.74	3,372.76	723.81	614.27	14,557,321.22	1,648,503.87	40.083996°N	104.971087°W
3,624.00	6.42	46.24	3,457.15	730.65	621.75	14,557,328.07	1,648,511.36	40.084015°N	104.971060°W
3,710.00	5.41	46.63	3,542.69	736.76	628.17	14,557,334.18	1,648,517.78	40.084031°N	104.971037°W
3,795.00	2.68	39.82	3,627.47	741.04	632.36	14,557,338.46	1,648,521.96	40.084043°N	104.971022°W
3,881.00	1.89	40.04	3,713.40	743.67	634.56	14,557,341.09	1,648,524.16	40.084050°N	104.971015°W
3,966.00	0.79	337.42	3,798.38	745.29	635.24	14,557,342.71	1,648,524.84	40.084055°N	104.971012°W
4,094.00	0.62	334.43	3,926.37	746.73	634.60	14,557,344.15	1,648,524.20	40.084059°N	104.971014°W
4,223.00	0.62	290.05	4,055.36	747.59	633.64	14,557,345.01	1,648,523.24	40.084061°N	104.971018°W
4,351.00	0.88	299.32	4,183.35	748.31	632.13	14,557,345.73	1,648,521.73	40.084063°N	104.971023°W
4,479.00	1.32	350.25	4,311.33	750.25	631.03	14,557,347.67	1,648,520.63	40.084068°N	104.971027°W
4,608.00	1.58	324.54	4,440.29	753.16	629.74	14,557,350.58	1,648,519.34	40.084076°N	104.971032°W
4,736.00	1.89	324.24	4,568.23	756.31	627.49	14,557,353.73	1,648,517.08	40.084085°N	104.971040°W
4,864.00	2.02	309.43	4,696.16	759.46	624.51	14,557,356.87	1,648,514.11	40.084094°N	104.971051°W
4,992.00	2.29	304.86	4,824.07	762.35	620.67	14,557,359.77	1,648,510.27	40.084102°N	104.971064°W
5,120.00	0.70	295.06	4,952.02	764.14	617.86	14,557,361.56	1,648,507.46	40.084107°N	104.971074°W
5,248.00	1.19	279.06	5,080.00	764.68	615.84	14,557,362.10	1,648,505.44	40.084108°N	104.971082°W
5,376.00	1.10	48.92	5,207.99	765.70	615.46	14,557,363.12	1,648,505.05	40.084111°N	104.971083°W
5,505.00	1.10	55.92	5,336.97	767.21	617.41	14,557,364.62	1,648,507.01	40.084115°N	104.971076°W
5,633.00	0.88	39.56	5,464.95	768.66	619.06	14,557,366.07	1,648,508.65	40.084119°N	104.971070°W
5,761.00	1.01	34.46	5,592.93	770.34	620.32	14,557,367.76	1,648,509.92	40.084124°N	104.971066°W
5,890.00	1.41	107.15	5,721.91	770.81	622.48	14,557,368.23	1,648,512.08	40.084125°N	104.971058°W
6,017.00	1.01	124.02	5,848.88	769.73	624.90	14,557,367.14	1,648,514.50	40.084122°N	104.971049°W
6,146.00	0.70	129.03	5,977.87	768.59	626.46	14,557,366.01	1,648,516.05	40.084119°N	104.971044°W

ARK Directional Services

Survey Report - Geographic

Company:	Anadarko Petroleum Corporation	Local Co-ordinate Reference:	Well Dacono 21-2 (111430)
Project:	Dacono	TVD Reference:	KB @ 5031.00ft (Original Well Elev)
Site:	Dacono 11 Pad	MD Reference:	KB @ 5031.00ft (Original Well Elev)
Well:	Dacono 21-2 (111430)	North Reference:	True
Wellbore:	Dacono 21-2	Survey Calculation Method:	Minimum Curvature
Design:	Dacono 21-2	Database:	EDM5000

Survey									
Measured Depth (ft)	Inclination (°)	Azimuth (°)	Vertical Depth (ft)	+N/-S (ft)	+E/-W (ft)	Map Northing (usft)	Map Easting (usft)	Latitude	Longitude
6,274.00	0.79	81.92	6,105.86	768.22	627.94	14,557,365.64	1,648,517.53	40.084118°N	104.971038°W
6,402.00	0.48	76.76	6,233.85	768.47	629.33	14,557,365.89	1,648,518.93	40.084118°N	104.971033°W
6,530.00	1.01	107.63	6,361.84	768.25	630.93	14,557,365.67	1,648,520.53	40.084118°N	104.971028°W
6,658.00	0.79	79.64	6,489.82	768.07	632.87	14,557,365.49	1,648,522.47	40.084117°N	104.971021°W
6,786.00	0.40	93.52	6,617.82	768.20	634.19	14,557,365.62	1,648,523.78	40.084118°N	104.971016°W
6,915.00	0.48	73.53	6,746.81	768.33	635.16	14,557,365.75	1,648,524.75	40.084118°N	104.971012°W
7,043.00	0.62	10.33	6,874.81	769.16	635.79	14,557,366.58	1,648,525.39	40.084120°N	104.971010°W
7,172.00	0.22	17.15	7,003.80	770.08	635.99	14,557,367.50	1,648,525.59	40.084123°N	104.971009°W
7,300.00	0.62	19.65	7,131.80	770.97	636.30	14,557,368.39	1,648,525.89	40.084125°N	104.971008°W
7,428.00	0.40	325.42	7,259.80	771.99	636.28	14,557,369.41	1,648,525.87	40.084128°N	104.971008°W
7,556.00	0.70	341.42	7,387.79	773.10	635.77	14,557,370.52	1,648,525.37	40.084131°N	104.971010°W
7,684.00	0.88	8.22	7,515.78	774.81	635.67	14,557,372.23	1,648,525.26	40.084136°N	104.971011°W
7,813.00	0.62	32.83	7,644.77	776.38	636.19	14,557,373.80	1,648,525.78	40.084140°N	104.971009°W
7,941.00	0.79	39.12	7,772.76	777.65	637.12	14,557,375.07	1,648,526.71	40.084144°N	104.971005°W
8,069.00	0.70	24.75	7,900.75	779.04	638.00	14,557,376.46	1,648,527.59	40.084147°N	104.971002°W
8,197.00	1.01	20.44	8,028.73	780.81	638.72	14,557,378.23	1,648,528.31	40.084152°N	104.971000°W
8,326.00	0.88	24.35	8,157.71	782.78	639.53	14,557,380.20	1,648,529.12	40.084158°N	104.970997°W
8,348.00	0.79	25.17	8,179.71	783.07	639.66	14,557,380.49	1,648,529.25	40.084158°N	104.970996°W
Dacono 21-2 Tgt									
8,445.00	0.40	33.14	8,276.71	783.96	640.13	14,557,381.38	1,648,529.72	40.084161°N	104.970995°W
8,492.00	0.40	33.14	8,323.71	784.23	640.31	14,557,381.65	1,648,529.90	40.084162°N	104.970994°W
Proj to TD at 8492 MD/8324 TVD									

Survey Annotations				
Measured Depth (ft)	Vertical Depth (ft)	Local Coordinates		Comment
		+N/-S (ft)	+E/-W (ft)	
8,492.00	8,323.71	784.23	640.31	Proj to TD at 8492 MD/8324 TVD

Checked By: _____ Approved By: _____ Date: _____