

---

# **SAMSON RESOURCES CORP - EBUS**

---

**Indian Mesa 32-7-11 #1**

**Colorado**

**Cement Surface Casing**

**17-Sep-2011**

**Job Site Documents**



## Cementing Job Summary

## *The Road to Excellence Starts with Safety*

<b>Sold To #:</b> 345114	<b>Ship To #:</b> 345114	<b>Quote #:</b>	<b>Sales Order #:</b> 8479229
<b>Customer:</b> SAMSON RESOURCES CORP - EBUS		<b>Customer Rep:</b>	
<b>Well Name:</b> Indian Mesa		<b>Well #:</b> 32-7-11 #1	<b>API/UWI #:</b> 050670985600
<b>Field:</b>	<b>City (SAP):</b> TULSA	<b>County/Parish:</b>	<b>State:</b> Colorado
<b>Legal Description:</b> Section 11 Township 32N Range 7W			
<b>Contractor:</b> AWS		<b>Rig/Platform Name/Num:</b> AWS 507	
<b>Job Purpose:</b> Cement Surface Casing			
<b>Well Type:</b> Development Well		<b>Job Type:</b> Cement Surface Casing	
<b>Sales Person:</b> SCOTT, KYLE		<b>Srvs Supervisor:</b> DOBBS, GARY	<b>MBU ID Emp #:</b> 122012

## Job Personnel

HES Emp Name	Exp Hrs	Emp #	HES Emp Name	Exp Hrs	Emp #	HES Emp Name	Exp Hrs	Emp #
DOBBS, GARY D	7.5	122012	MILLER, DAVID A	7.5	484499	TYLER, LUTHER	7.5	375283

## Equipment

HES Unit #	Distance-1 way	HES Unit #	Distance-1 way	HES Unit #	Distance-1 way	HES Unit #	Distance-1 way
10025040	50 mile	10822043	50 mile	11324578	50 mile	11583928	50 mile

### Job Hours

Date	On Location Hours	Operating Hours	Date	On Location Hours	Operating Hours	Date	On Location Hours	Operating Hours
9/17/11	7.5	4						

<b>TOTAL</b>	<i>Total is the sum of each column separately</i>				
--------------	---	--	--	--	--

**Job**

### Job Times

JOB NAME					JOB TIME			
Formation Name						Date	Time	Time Zone
Formation Depth (MD)	Top		Bottom		Called Out	17 - Sep - 2011	05:00	MST
Form Type		BHST			On Location	17 - Sep - 2011	08:30	MST
Job depth MD	350. ft		Job Depth TVD		Job Started	17 - Sep - 2011	14:05	MST
Water Depth			Wk Ht Above Floor		Job Completed	17 - Sep - 2011	14:37	MST
Perforation Depth (MD)	From		To		Departed Loc	17 - Sep - 2011	16:00	MST

## Well Data

<i>Description</i>	<b>New / Used</b>	<b>Max pressure psig</b>	<b>Size in</b>	<b>ID in</b>	<b>Weight lbm/ft</b>	<b>Thread</b>	<b>Grade</b>	<b>Top MD ft</b>	<b>Bottom MD ft</b>	<b>Top TVD ft</b>	<b>Bottom TVD ft</b>
12-1/4" Surface Open Hole				12.25				.	350.		
8-5/8" Surface Casing	Unknown		8.625	8.097	24.		J-55	.	350.		

**Sales/Rental/3<sup>rd</sup> Party (HES)**

Description	Qty	Qty uom	Depth	Supplier
PLUG,CMTG,TOP,8 5/8,HWE,7.20 MIN/8.09 MA	1	EA		
SUGAR, GRANULATED, IMPERIAL	200	LB		

## Tools and Accessories

Type	Size	Qty	Make	Depth	Type	Size	Qty	Make	Depth	Type	Size	Qty	Make
Guide Shoe					Packer					Top Plug			
Float Shoe					Bridge Plug					Bottom Plug			
Float Collar					Retainer					SSR plug set			
Insert Float										Plug Container			
Stage Tool										Centralizers			

## Miscellaneous Materials

Gelling Agt	Conc	Surfactant	Conc	Acid Type	Qty	Conc	%
Treatment Fld	Conc	Inhibitor	Conc	Sand Type	Size	Qty	

## Fluid Data

**Stage/Plug #: 1**

Fluid #	Stage Type	Fluid Name	Qty	Qty uom	Mixing Density lbm/gal	Yield ft3/sk	Mix Fluid Gal/sk	Rate bbl/min	Total Mix Fluid Gal/sk
---------	------------	------------	-----	---------	------------------------	--------------	------------------	--------------	------------------------

1	Water Spacer		10.00	bbl	8.33	.0	.0	.0	
2	Surface Cement	CMT - PREMIUM - CLASS G, 94 LB SK (100003685)	265.0	sacks	15.8	1.17	5.0		5.0
	94 lbm	CMT - PREMIUM - CLASS G REG OR TYPE V, BULK (100003685)							
	2 %	CALCIUM CHLORIDE - HI TEST PELLET (100005053)							
	0.125 lbm	POLY-E-FLAKE (101216940)							
	4.998 Gal	FRESH WATER							
3	Displacement		20.00	bbl	8.33	.0	.0	.0	
<b>Calculated Values</b>		<b>Pressures</b>		<b>Volumes</b>					
Displacement	19.7	Shut In: Instant		Lost Returns		Cement Slurry	55	Pad	
Top Of Cement	0	5 Min		Cement Returns	30	Actual Displacement	20	Treatment	
Frac Gradient		15 Min		Spacers	10	Load and Breakdown		Total Job	
<b>Rates</b>									
Circulating	5	Mixing	5	Displacement	5	Avg. Job	5		
Cement Left In Pipe	Amount	45 ft	Reason	Shoe Joint					
Frac Ring # 1 @	ID	Frac ring # 2 @	ID	Frac Ring # 3 @	ID	Frac Ring # 4 @	ID		
The Information Stated Herein Is Correct				Customer Representative Signature					

*The Road to Excellence Starts with Safety*

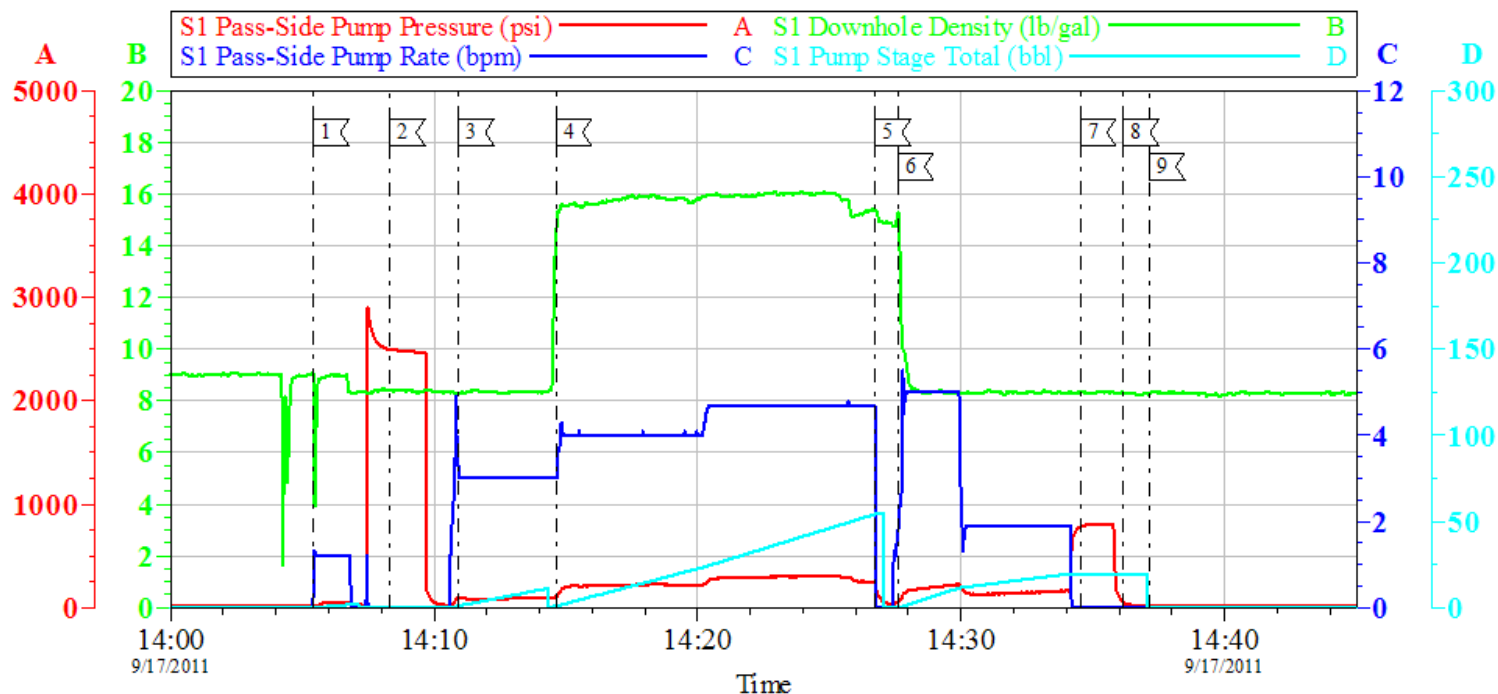
<b>Sold To #:</b> 345114	<b>Ship To #:</b> 345114	<b>Quote #:</b>	<b>Sales Order #:</b> 8479229
<b>Customer:</b> SAMSON RESOURCES CORP - EBUS		<b>Customer Rep:</b>	
<b>Well Name:</b> Indian Mesa	<b>Well #:</b> 32-7-11 #1	<b>API/UWI #:</b> 050670985600	
<b>Field:</b>	<b>City (SAP):</b> TULSA	<b>County/Parish:</b>	<b>State:</b> Colorado
<b>Legal Description:</b> Section 11 Township 32N Range 7W			
<b>Lat:</b> N 0 deg. OR N 0 deg. 0 min. 0 secs.		<b>Long:</b> E 0 deg. OR E 0 deg. 0 min. 0 secs.	
<b>Contractor:</b> AWS		<b>Rig/Platform Name/Num:</b> AWS 507	
<b>Job Purpose:</b> Cement Surface Casing			<b>Ticket Amount:</b>
<b>Well Type:</b> Development Well		<b>Job Type:</b> Cement Surface Casing	
<b>Sales Person:</b> SCOTT, KYLE		<b>Srvc Supervisor:</b> DOBBS, GARY	<b>MBU ID Emp #:</b> 122012

Activity Description	Date/Time	Cht #	Rate bbl/min	Volume bbl		Pressure psig		Comments
				Stage	Total	Tubing	Casing	
Pre-Convoy Safety Meeting	09/17/2011 06:45							ALL HES EMPLOYEES
Arrive at Location from Service Center	09/17/2011 08:30							
Assessment Of Location Safety Meeting	09/17/2011 08:35							ALL HES EMPLOYEES
Pre-Rig Up Safety Meeting	09/17/2011 08:50							ALL HES EMPLOYEES
Rig-Up Equipment	09/17/2011 09:00							
Wait on Customer or Customer Sub-Contractor Equip	09/17/2011 09:30							WAIT ON RIG CREW TO PULL OUT OF HOLE WITH DRILL PIPE & RUN CASING.
Wait on Customer or Customer Sub-Contractor Equipm	09/17/2011 13:45							
Pre-Job Safety Meeting	09/17/2011 13:50							EVERYONE ON LOCATION
Start Job	09/17/2011 14:05							
Test Lines	09/17/2011 14:08					2500.0		
Pump Spacer 1	09/17/2011 14:10		3	10			90.0	FRESH WATER
Pump Cement	09/17/2011 14:14		5	55.2			106.0	MIX AND PUMP 265 SKS OF SURFACE CEMENT MIXED @ 15.8#, 1.17 YEILD, 5.0 GPS FRESH WATER
Drop Top Plug	09/17/2011 14:26							
Pump Displacement	09/17/2011 14:27		5	15			200.0	FRESH WATER
Bump Plug	09/17/2011 14:34		2	5	20		800.0	FRESH WATER

***Cementing Job Log***

Activity Description	Date/Time	Cht #	Rate bbl/ min	Volume bbl		Pressure psig		Comments
				Stage	Total	Tubing	Casing	
Check Floats	09/17/2011 14:36							FLOATS HELD
Cement Returns to Surface	09/17/2011 14:37			30				CIRCULATED 30 BBLS OF CEMENT TO PIT
End Job	09/17/2011 14:37							

### SAMSON INDIAN MESA 32-7 #1 / SURFACE



#### Local Event Log

Intersection	SPPP	Intersection	SPPP
1< START JOB	14:05:26 15.63	2< TEST LINES	14:08:18 2499
3< PUMP SPACER 1	14:10:55 89.82	4< PUMP CEMENT	14:14:38 106.8
5< DROP PLUG	14:26:44 244.9	6< PUMP DISPLACEMENT	14:27:36 50.40
7< BUMP PLUG	14:34:31 779.2	8< CHECK FLOATS	14:36:10 50.94
9< END JOB	14:37:09 20.00		

Customer: SAMSON	Job Date: 17-Sep-2011	Sales Order #: 8479229
Well Description: INDIAN MESA 32-7 #1	Job Type: SURFACE	ADC Used: YES
Customer Rep: EARL SKAGGS	Service Supervisor: DONNY DOBBS	Operator/Pump: DAVE MILLER / 11324578

Opti Cem v6.4.9  
17-Sep-11 14:52