
WPX ENERGY ROCKY MOUNTAIN LLC-EBUS

**KP 533-8
KOKOPELLI
Garfield County , Colorado**

Cement Surface Casing
31-Jan-2012

Post Job Report

The Road to Excellence Starts with Safety

Sold To #: 300721		Ship To #: 2903405		Quote #:		Sales Order #: 9216496	
Customer: WPX ENERGY ROCKY MOUNTAIN LLC-EBUS				Customer Rep: Mulherin, Seth			
Well Name: KP			Well #: 533-8			API/UWI #: 05-045-20990	
Field: KOKOPELLI		City (SAP): RIFLE		County/Parish: Garfield		State: Colorado	
Lat: N 39.536 deg. OR N 39 deg. 32 min. 7.948 secs.				Long: W 107.58 deg. OR W -108 deg. 25 min. 13.004 secs.			
Contractor: NABORS 574			Rig/Platform Name/Num: 574				
Job Purpose: Cement Surface Casing							
Well Type: Development Well			Job Type: Cement Surface Casing				
Sales Person: MAYO, MARK			Srvc Supervisor: SLAUGHTER, JESSE			MBU ID Emp #: 454315	

Job Personnel

HES Emp Name	Exp Hrs	Emp #	HES Emp Name	Exp Hrs	Emp #	HES Emp Name	Exp Hrs	Emp #
KUKUS, CARLTON Dean	7.5	458577	REEVES, BRANDON W	7.5	287883	SLAUGHTER, JESSE Dean	7.5	454315
SPARKS, CLIFFORD Paul	7.5	502476						

Equipment

HES Unit #	Distance-1 way	HES Unit #	Distance-1 way	HES Unit #	Distance-1 way	HES Unit #	Distance-1 way
10616651C	60 mile	10722398	60 mile	11139330	60 mile	11583931	60 mile
11808827	60 mile						

Job Hours

Date	On Location Hours	Operating Hours	Date	On Location Hours	Operating Hours	Date	On Location Hours	Operating Hours
1-31-2012	7.5	3						

TOTAL	Total is the sum of each column separately							
--------------	--	--	--	--	--	--	--	--

Job

Formation Name	Top	Bottom	Called Out	Date	Time	Time Zone
Formation Depth (MD)			On Location	31 - Jan - 2012	09:30	MST
Form Type	BHST		Job Started	31 - Jan - 2012	14:00	MST
Job depth MD	1327. ft		Job Completed	31 - Jan - 2012	18:58	MST
Water Depth	Wk Ht Above Floor		Job Completed	31 - Jan - 2012	20:01	MST
Perforation Depth (MD)	From	To	Departed Loc	31 - Jan - 2012	21:30	MST

Well Data

Description	New / Used	Max pressure psig	Size in	ID in	Weight lbm/ft	Thread	Grade	Top MD ft	Bottom MD ft	Top TVD ft	Bottom TVD ft
OPEN HOLE				13.5				.	1340.		
SURFACE CASING	Unknown		9.625	9.001	32.3			.	1327.		

Sales/Rental/3rd Party (HES)

Description	Qty	Qty uom	Depth	Supplier
PLUG,CMTG,TOP,9 5/8,HWE,8.16 MIN/9.06 MA	1	EA		

Tools and Accessories

Type	Size	Qty	Make	Depth	Type	Size	Qty	Make	Depth	Type	Size	Qty	Make
Guide Shoe					Packer					Top Plug	9.625	1	HES
Float Shoe					Bridge Plug					Bottom Plug			
Float Collar					Retainer					SSR plug set			
Insert Float										Plug Container	9.625	1	HES
Stage Tool										Centralizers			

Miscellaneous Materials

Gelling Agt	Conc	Surfactant	Conc	Acid Type	Qty	Conc	%
Treatment Fld	Conc	Inhibitor	Conc	Sand Type	Size	Qty	

Fluid Data

Stage/Plug #: 1

Fluid #	Stage Type	Fluid Name	Qty	Qty uom	Mixing Density lbm/gal	Yield ft ³ /sk	Mix Fluid Gal/sk	Rate bbl/min	Total Mix Fluid Gal/sk
1	Fresh Water	FRESH WATER	20.00	bbl	8.33	.0	.0	4	
2	Lead Cement	VERSACEM (TM) SYSTEM (452010)	180.0	sacks	12.3	2.38	13.75	8	13.75
3	Tail Cement	VERSACEM (TM) SYSTEM (452010)	160.0	sacks	12.8	2.11	11.75	6	11.75
4	Displacement Fluid	FRESH WATER	100.9	bbl	8.34	.0	.0	10	
Calculated Values		Pressures		Volumes					
Displacement	100.9	Shut In: Instant		Lost Returns	NO	Cement Slurry	136	Pad	
Top Of Cement	SURFACE	5 Min		Cement Returns	20	Actual Displacement	100.9	Treatment	
Frac Gradient		15 Min		Spacers	20	Load and Breakdown		Total Job	257
Rates									
Circulating		Mixing	8	Displacement	10	Avg. Job			9
Cement Left In Pipe	Amount	44.4 ft	Reason	Shoe Joint					
Frac Ring # 1 @	ID		Frac ring # 2 @	ID		Frac Ring # 3 @	ID		Frac Ring # 4 @
The Information Stated Herein Is Correct				Customer Representative Signature					

The Road to Excellence Starts with Safety

Sold To #: 300721		Ship To #: 2903405		Quote #:		Sales Order #: 9216496	
Customer: WPX ENERGY ROCKY MOUNTAIN LLC-EBUS				Customer Rep: Mulherin, Seth			
Well Name: KP			Well #: 533-8			API/UWI #: 05-045-20990	
Field: KOKOPELLI		City (SAP): RIFLE		County/Parish: Garfield		State: Colorado	
Legal Description:							
Lat: N 39.536 deg. OR N 39 deg. 32 min. 7.948 secs.				Long: W 107.58 deg. OR W -108 deg. 25 min. 13.004 secs.			
Contractor: NABORS 574			Rig/Platform Name/Num: 574				
Job Purpose: Cement Surface Casing						Ticket Amount:	
Well Type: Development Well			Job Type: Cement Surface Casing				
Sales Person: MAYO, MARK			Srvc Supervisor: SLAUGHTER, JESSE			MBU ID Emp #: 454315	

Activity Description	Date/Time	Cht #	Rate bbl/min	Volume bbl		Pressure psig		Comments
				Stage	Total	Tubing	Casing	
Call Out	01/31/2012 08:30							TD 1340 FT, TP 1327 FT, SHOE 44.4 FT, CSG 9 5/8 IN 32.3 LB/FT, HOLE 13 1/2 IN, MUD WT 9.9 PPG
Pre-Convoy Safety Meeting	01/31/2012 11:50							WITH ALL HES PERSONNEL
Crew Leave Yard	01/31/2012 12:00							
Arrive At Loc	01/31/2012 14:00							RIG WAS RUNNING CASING UPON HES ARRIVAL
Assessment Of Location Safety Meeting	01/31/2012 17:00							WITH ALL HES PERSONNEL
Other	01/31/2012 17:10							SPOT EQUIPMENT
Pre-Rig Up Safety Meeting	01/31/2012 17:20							WITH ALL HES PERSONNEL
Rig-Up Equipment	01/31/2012 17:30							
Pre-Job Safety Meeting	01/31/2012 18:45							WITH ALL PERSONNEL ON LOCATION
Start Job	01/31/2012 18:58							
Other	01/31/2012 18:58		2	2			43.0	FILL LINES WITH FRESH WATER
Test Lines	01/31/2012 19:00							TESTED LINES TO 3684 PSI PRESSURE HOLDING
Pump Spacer 1	01/31/2012 19:05		4	20			100.0	FRESH WATER
Pump Lead Cement	01/31/2012 19:14		8	76.3			370.0	180 SKS AT 12.3 PPG, 2.38 FT3/SK, 13.75 GAL/SK
Activity Description	Date/Time	Cht	Rate bbl/min	Volume bbl		Pressure psig		Comments

Sold To # : 300721

Ship To # :2903405

Quote # :

Sales Order # :

9216496

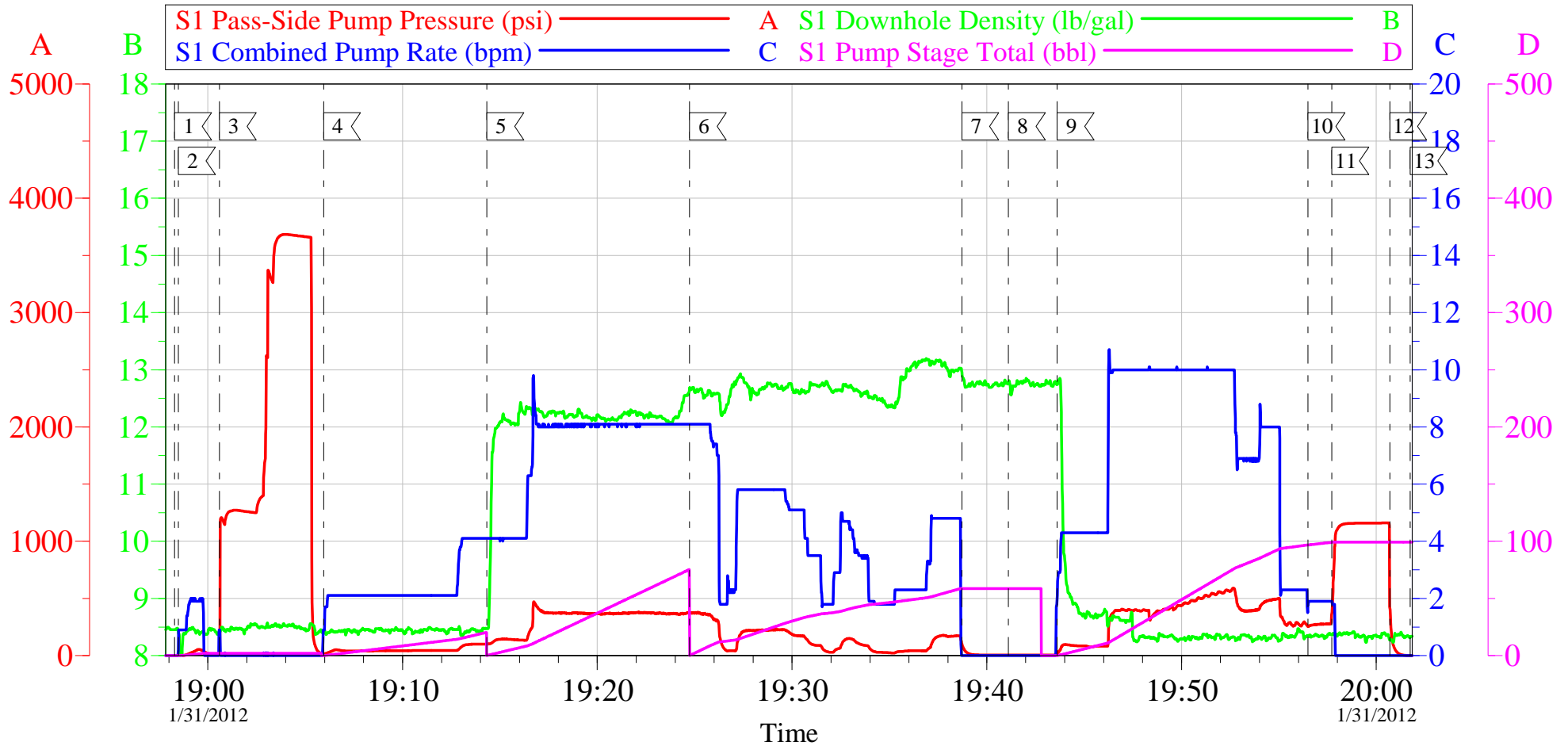
SUMMIT Version: 7.3.014

Wednesday, February 01, 2012 09:09:00

		#		Stage	Total	Tubing	Casing	
Pump Tail Cement	01/31/2012 19:24		3.5	60.1			180.0	160 SKS AT 12.8 PPG, 2.11 FT3/SK, 11.75 GAL/SK. RATE VARIED DUE TO MIX RATE COMPLICATIONS
Shutdown	01/31/2012 19:38							
Drop Top Plug	01/31/2012 19:41							PLUG LAUNCHED
Pump Displacement	01/31/2012 19:43		10	90.9			555.0	FRESH WATER
Slow Rate	01/31/2012 19:56		2	10			270.0	SLOW RATE 10 BBLs PRIOR TO CALCULATED DISPLACEMENT
Bump Plug	01/31/2012 19:57		2		100.9		1158. 0	PLUG BUMPED
Check Floats	01/31/2012 20:00							FLOATS HOLDING. HES RETURNED 1 BBL H2O TO PUMP
End Job	01/31/2012 20:01							PIPE WAS STATIC DURING JOB, GOOD CIRCULATION DURING JOB, HES RETURNED 20 BBL CEMENT TO SURFACE
Pre-Rig Down Safety Meeting	01/31/2012 20:05							WITH ALL HES PERSONNEL
Rig-Down Equipment	01/31/2012 20:10							
Pre-Convoy Safety Meeting	01/31/2012 21:20							WITH ALL HES PERSONNEL
Crew Leave Location	01/31/2012 21:30							
Comment	01/31/2012 21:31							THANK YOU FOR USING HALLIBURTON CEMENT DEPARTMENT. JESSE SLAUGHTER AND CREW.

WILLIAMS KP 533-8

9 5/8 SURFACE



Local Event Log

1 START JOB	18:58:18	2 PRIME LINES	18:58:29	3 TEST LINES	19:00:35
4 PUMP H2O SPACER	19:05:57	5 PUMP LEAD CEMENT	19:14:20	6 PUMP TAIL CEMENT	19:24:44
7 SHUTDOWN	19:38:43	8 DROP TOP PLUG	19:41:07	9 PUMP DISPLACEMENT	19:43:37
10 SLOW RATE	19:56:30	11 BUMP PLUG	19:57:43	12 CHECK FLOATS	20:00:42
13 END JOB	20:01:45				

Customer: WILLIAMS
Well Description: KP 533-8
Customer Rep: SETH MULHERIN

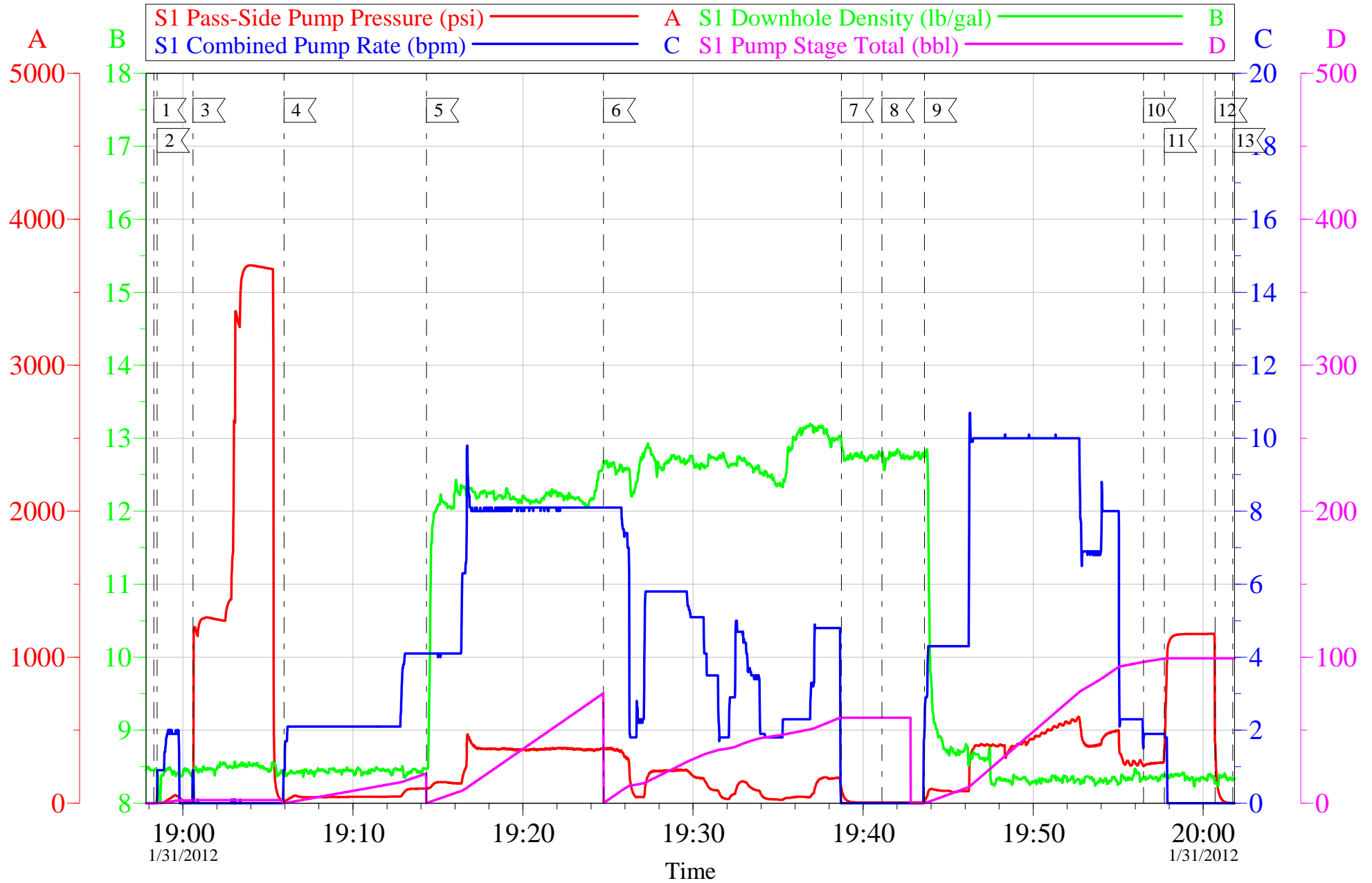
Job Date: 31-Jan-2012
Job Type: SURFACE
Cement Supervisor: JESSE SLAUGHTER

Sales Order #: 9216496
ADC Used: YES
Elite #4: CARL KUKUS

OptiCem v6.4.10
31-Jan-12 20:29

WILLIAMS KP 533-8

9 5/8 SURFACE



Customer: WILLIAMS	Job Date: 31-Jan-2012	Sales Order #: 9216496
Well Description: KP 533-8	Job Type: SURFACE	ADC Used: YES
Customer Rep: SETH MULHERIN	Cement Supervisor: JESSE SLAUGHTER	Elite #4: CARL KUKUS

OptiCem v6.4.10
31-Jan-12 20:29

HALLIBURTON

Water Analysis Report

Company: WILLIAMS PRODUCTION

Submitted by: JESSE SLAUGHTER

Attention: LAB

Lease KP

Well # 533-8

Date: 1/31/2012

Date Rec.:

S.O.# 9216496

Job Type: SURFACE

Specific Gravity	<i>MAX</i>	1
pH	<i>8</i>	6
Potassium (K)	<i>5000</i>	250 Mg / L
Calcium (Ca)	<i>500</i>	120 Mg / L
Iron (FE2)	<i>300</i>	0 Mg / L
Chlorides (Cl)	<i>3000</i>	0 Mg / L
Sulfates (SO ₄)	<i>1500</i>	UNDER 200 Mg / L
Chlorine (Cl ₂)		0 Mg / L
Temp	<i>40-80</i>	45 Deg
Total Dissolved Solids		150 Mg / L

Respectfully: JESSE SLAUGHTER

Title: CEMENTING SUPERVISOR

Location: Grand Junction, CO

NOTICE:

This report is limited to the described sample tested. Any person using or relying on this report agrees that Halliburton shall not be liable for any loss or damage whether due to act or omission resulting from such report or its use.

Sales Order #: 9216496	Line Item: 10	Survey Conducted Date: 1/31/2012
Customer: WPX ENERGY ROCKY MOUNTAIN LLC-EBUS		Job Type (BOM): CMT SURFACE CASING BOM
Customer Representative: SETH MULHERIN		API / UWI: (leave blank if unknown) 05-045-20990
Well Name: KP		Well Number: 533-8
Well Type: Development Well	Well Country: United States of America	
H2S Present: No	Well State: Colorado	Well County: Garfield

Dear Customer,

We hope that you were satisfied with the service quality of this job performed by Halliburton. It is the aim of our management and service personnel to deliver equipment and service of a standard unmatched in the service sector of the energy industry.

Please take the time to let us know if our performance met with your satisfaction. Please be as critical as possible to ensure we constantly improve our service. Your comments are of great value to us and are intended for the exclusive use of Halliburton.

CUSTOMER SATISFACTION SURVEY

CATEGORY	CUSTOMER SATISFACTION RESPONSE	
Survey Conducted Date	The date the survey was conducted	1/31/2012
Survey Interviewer	The survey interviewer is the person who initiated the survey.	JESSE SLAUGHTER (HB21762)
Customer Participation	Did the customer participate in this survey? (Y/N)	Yes
Customer Representative	Enter the Customer representative name	SETH MULHERIN
HSE	Was our HSE performance satisfactory? Circle Y or N	Yes
Equipment	Were you satisfied with our Equipment? Circle Y or N	Yes
Personnel	Were you satisfied with our people? Circle Y or N	Yes
Customer Comment	Customer's Comment	

CUSTOMER SIGNATURE

Sales Order #: 9216496	Line Item: 10	Survey Conducted Date: 1/31/2012
Customer: WPX ENERGY ROCKY MOUNTAIN LLC-EBUS		Job Type (BOM): CMT SURFACE CASING BOM
Customer Representative: SETH MULHERIN		API / UWI: (leave blank if unknown) 05-045-20990
Well Name: KP		Well Number: 533-8
Well Type: Development Well	Well Country: United States of America	
H2S Present: No	Well State: Colorado	Well County: Garfield

KEY PERFORMANCE INDICATORS

General	
Survey Conducted Date The date the survey was conducted	1/31/2012

Cementing KPI Survey	
Type of Job Select the type of job. (Cementing or Non-Cementing)	0
Select the Maximum Deviation range for this Job What is the highest deviation for the job you just completed? This may not be the maximum well deviation.	Vertical
Total Operating Time (hours) Total Operating Hours Including Rig-up, Pumping, Rig-down. Enter in decimal format.	3
HSE Incident, Accident, Injury HSE Incident, Accident, Injury. This should be recordable incidents only.	No
Was the job purpose achieved? Was the job delivered correctly as per customer agreed design?	Yes
Operating Hours (Pumping Hours) Total number of hours pumping fluid on this job. Enter in decimal format.	1
Customer Non-Productive Rig Time (hrs) Lost time due to Halliburton in the start, execution, or completion of an ordered service or product, or delays in a follow-on service. Enter in decimal format. 0 if none.	0
Type of Rig Classification Job Was Performed Type Of Rig (classification) Job Was Performed On	Drilling Rig (Portable)
Number Of JSAs Performed Number Of Jsas Performed	6
Number of Unplanned Shutdowns Unplanned shutdown is when injection stops for any period of time.	0
Was this a Primary Cement Job (Yes / No)	Yes

Sales Order #: 9216496	Line Item: 10	Survey Conducted Date: 1/31/2012
Customer: WPX ENERGY ROCKY MOUNTAIN LLC-EBUS		Job Type (BOM): CMT SURFACE CASING BOM
Customer Representative: SETH MULHERIN		API / UWI: (leave blank if unknown) 05-045-20990
Well Name: KP		Well Number: 533-8
Well Type: Development Well	Well Country: United States of America	
H2S Present: No	Well State: Colorado	Well County: Garfield

Primary Cement Job= Casing job, Liner job, or Tie-back job.	
Did We Run Wiper Plugs? Did We Run Top And Bottom Casing Wiper Plugs?	Top
Mixing Density of Job Stayed in Designed Density Range (0-100%) Density Range defined as +/- .20 ppg. Calculation: Total BBLs cement mixed at designed density divided by total BBLs of cement multiplied by 100	95
Was Automated Density Control Used? Was Automated Density Control (ADC) Used ?	Yes
Pump Rate (percent) of Job Stayed At Designed Pump Rate Pump Rate range defined as +/- 1bbl/min. Calculation: Total BBLs of fluid pumped at the designed rate divided by Total BBLs of fluid pumped, multiplied by 100	95
Nbr of Remedial Sqz Jobs Rqd - Competition Number Of Remedial Squeeze Jobs Required After Primary Job Performed By Competition	0
Nbr of Remedial Plug Jobs Rqd - HES Number Of Remedial Plug Jobs Needed After Primary Plug Pumped By HES	0
Nbr of Remedial Sqz Jobs Rqd - HES Number Of Remedial Squeeze Jobs Required After Primary Job Performed By HES	0