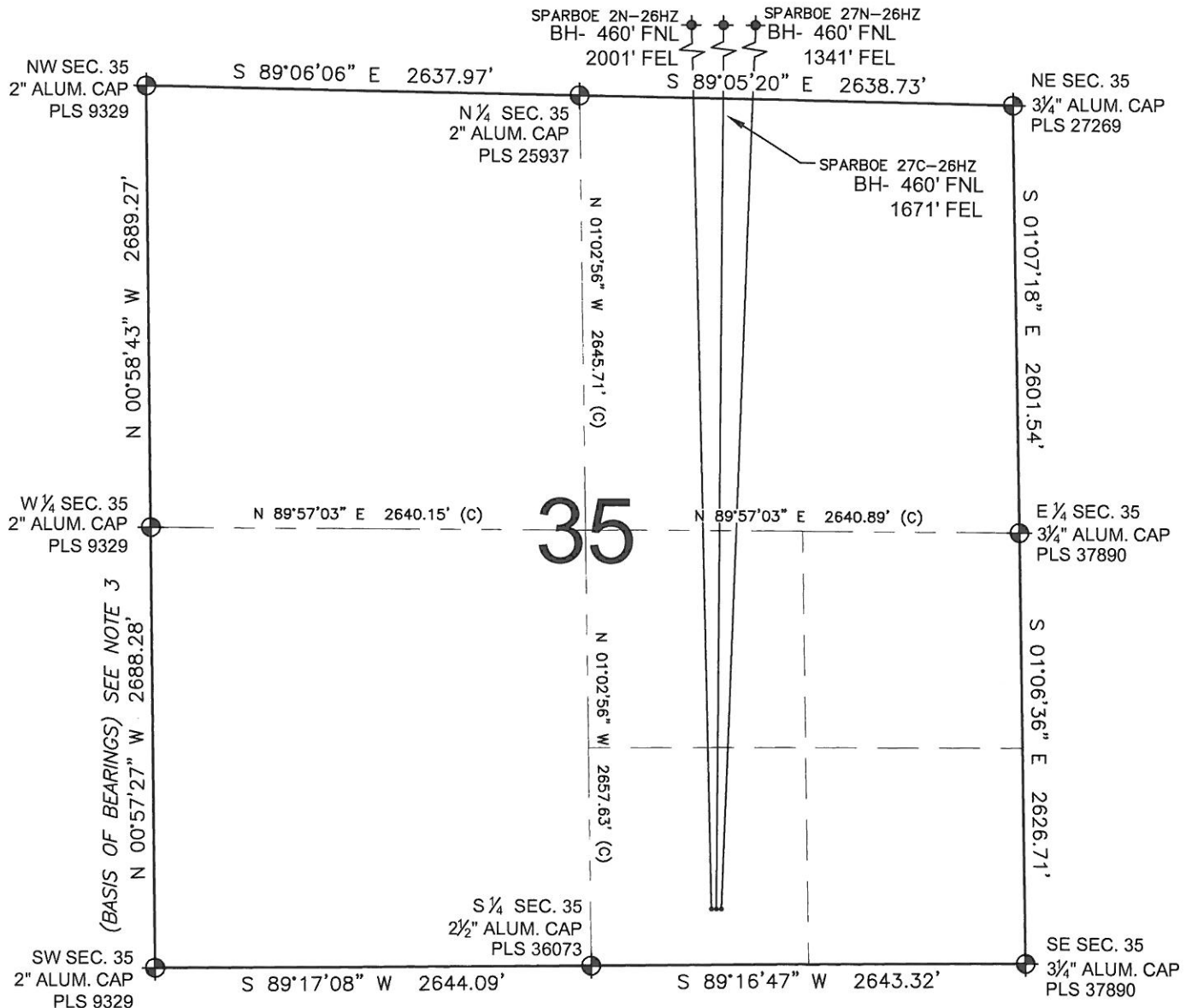


PAD DRAWING: SPARBOE 3 PAD

SECTION 35, TOWNSHIP 2 NORTH, RANGE 65 WEST, 6TH P.M.



NOTES:

1. THIS FIELD SURVEY CONFORMS TO THE MINIMUM STANDARDS SET BY THE C.O.G.C.C., RULE NO. 215
2. HORIZONTAL POSITIONS AND ORTHOMETRIC ELEVATIONS SHOWN AT THE WELL HEAD, ARE BASED ON GPS-RTK POSITIONS DERIVED FROM MINIMUM 2-HOUR STATIC OBSERVATIONS CORRECTED BY THE NATIONAL GEODETIC SURVEY ONLINE POSITIONING USER SERVICE, O.P.U.S. DATUM: HORIZONTAL = NAD83/2007, VERTICAL = NAVD88
3. THE BASIS OF BEARINGS ARE STATE PLANE COORDINATE SYSTEM GRID BEARINGS SHOWN HEREON BETWEEN THE DESCRIBED THE MONUMENTS SHOWN HEREON.
4. GRID DISTANCES ARE SHOWN, AS MEASURED IN THE FIELD, WITH TIES TO WELLS MEASURED PERPENDICULAR TO SECTION LINES.

LEGEND

- = EXISTING MONUMENT
 = BOTTOM HOLE
 BH= BOTTOM HOLE
 = PROPOSED WELL
 = EXISTING WELL

NOTES:

- SPARBOE 2N-26HZ TO BE AT 342' FSL, 1909' FEL.
 BOTTOM HOLE AT 460' FNL & 2001' FEL.
 SPARBOE 27C-26HZ TO BE AT 342' FSL, 1879' FEL.
 BOTTOM HOLE AT 460' FNL & 1671' FEL.
 SPARBOE 27N-26HZ TO BE AT 342' FSL, 1849' FEL.
 BOTTOM HOLE AT 460' FNL & 1341' FEL.

PREPARED BY:



KERR-MCGEE OIL & GAS ONSHORE LP

FIELD DATE: 07-11-12	PAD NAME: SPARBOE 3 PAD
DRAWING DATE: 07-11-12	SURFACE LOCATION: WELD COUNTY, COLORADO
BY: SMF	REV: MLP
SW 1/4 SE 1/4, SEC. 35, T2N, R65W, 6TH P.M.	

