

T10N, R58W, 6th P.M.

WHITTING OIL & GAS CORP.

2010 UELS Alum. Cap.
0.5' Below Ground
Lat: 40.816932°
Long: 103.860906°

2012 Alum. Cap.
PLS 28285, 0.2' High
Lat: 40.816800°
Long: 103.851339°

2010 UELS Alum. Cap.
Flush W/Ground
Lat: 40.816906°
Long: 103.841850°

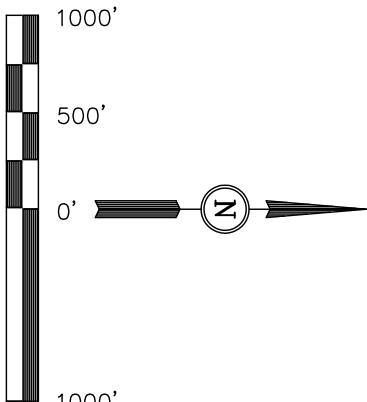
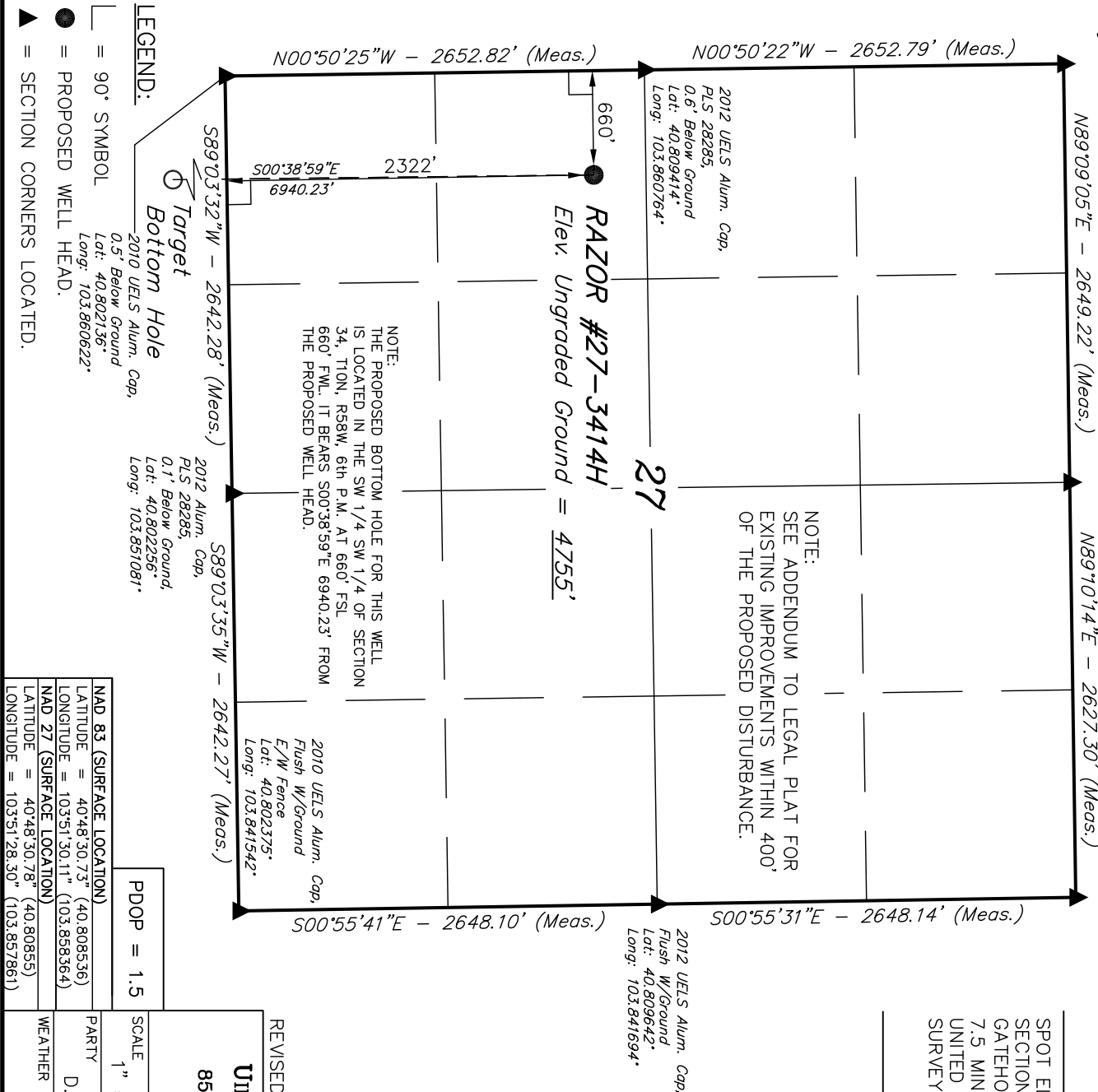
Well location, RAZOR #27-3414H, (SURFACE LOCATION), located as shown in the NW 1/4 SW 1/4 of Section 27, T10N, R58W, 6th P.M., Weld County, Colorado.

BASIS OF ELEVATION

SPOT ELEVATION LOCATED AT THE NORTHEAST CORNER OF SECTION 15, 19N, R58W, 6th P.M. TAKEN FROM THE GATEHOOK SPRING, QUADRANGLE, COLORADO, WELD COUNTY, 7.5 MINUTE QUAD (TOPOGRAPHIC MAP) PUBLISHED BY THE UNITED STATES DEPARTMENT OF THE INTERIOR, GEOLOGICAL SURVEY. SAID ELEVATION IS MARKED AS BEING 4679 FEET.

BASIS OF BEARINGS

BASIS OF BEARINGS IS A G.P.S. OBSERVATION.



CERTIFICATE

THIS IS TO CERTIFY THAT THE ABOVE PLAT WAS PREPARED FROM FIELD NOTES OF ACTUAL SURVEYS MADE BY ME OR UNDER MY SUPERVISION AND THAT THE SAME ARE TRUE AND CORRECT TO THE BEST OF MY KNOWLEDGE AND BELIEF.

REVISED: 05-10-12

REGISTERED LAND SURVEYOR
REGISTRATION NO. 14922
STATE OF COLORADO
05-10-12

UNTANH ENGINEERING & LAND SURVEYING

85 SOUTH 200 EAST - VERNAL, UTAH 84078

(435) 789-1017

SCALE		DATE SURVEYED:	DATE DRAWN:
1" = 1000'		04-27-12	04-30-12
PARTY	REFERENCES		
D.N. G.W. W.M.	G.L.O. PLAT		
WEATHER	FILE		
COLD	WHITTING OIL & GAS CORP.		

T10N, R58W, 6th P.M.

WHITTING OIL & GAS CORP.

2010 UELS Alum. Cap,
0.5' Below Ground
Lat: 40.802136°
Long: 103.860622°

Surface Location

2012 Alum. Cap,
PLS 28285,
0.1' Below Ground,
Lat: 40.802256°
Long: 103.851081°

2010 UELS Alum. Cap,
Flush W/Ground
E/W Fence
Lat: 40.802375°
Long: 103.841542°

Well location, RAZOR #27-3414H, (TARGET BOTTOM HOLE), located as shown in the SW 1/4 SW 1/4 of Section 34, T10N, R58W, 6th P.M., Weld County, Colorado.

BASIS OF ELEVATION

SPOT ELEVATION LOCATED AT THE NORTHEAST CORNER OF SECTION 15, T9N, R58W, 6th P.M. TAKEN FROM THE GATEHOOK SPRING, QUADRANGLE, COLORADO, WELD COUNTY, 7.5 MINUTE QUAD (TOPOGRAPHIC MAP) PUBLISHED BY THE UNITED STATES DEPARTMENT OF THE INTERIOR, GEOLOGICAL SURVEY. SAID ELEVATION IS MARKED AS BEING 4679 FEET.

BASIS OF BEARINGS

BASIS OF BEARINGS IS A C.P.S. OBSERVATION.

N00°33'14"W - 2634.68' (Meas.)

2012 UELS Alum. Cap,
PLS 28285, 0.3' High
Lat: 40.794906°
Long: 103.860528°

S00°38'59"E
6940.23'

S89°03'32"W - 2642.28' (Meas.)

S89°03'35"W - 2642.27' (Meas.)

N00°54'40"W - 2669.61' (Meas.)

2012 UELS Alum. Cap, 0.2' High
Lat: 40.795050°
Long: 103.841386°

N00°33'11"W - 2634.69' (Meas.)

660'

RAZOR #27-3414H
Target
Bottom Hole

S89°48'47"W - 2658.92' (Meas.)

2010 UELS Alum. Cap,
Lat: 40.787675°
Long: 103.860433°

S89°48'47"W - 2658.94' (Meas.)

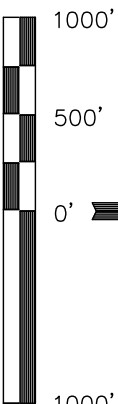
2010 Alum. Cap,
Flush W/Ground
Lat: 40.787700°
Long: 103.850833°

N00°54'40"W - 2669.61' (Meas.)

T10N

T9N

NOTE:
THE PROPOSED BOTTOM HOLE BEARS S00°38'59"E 6940.23' FROM THE PROPOSED WELL HEAD WHICH IS LOCATED IN THE NW 1/4 SW 1/4 OF SECTION 27, T10N, R58W, 6th P.M. AT 2322' FSL 660' FWL.



CERTIFICATE

THIS IS TO CERTIFY THAT THE ABOVE PLAT WAS PREPARED FROM FIELD NOTES OF ACTUAL SURVEYS MADE BY ME OR UNDER MY SUPERVISION AND THAT THE SAME ARE TRUE AND CORRECT TO THE BEST OF MY KNOWLEDGE AND BELIEF.

REGISTERED LAND SURVEYOR
REGISTRATION NO. 14922
STATE OF COLORADO
05-10-12

REVISED: 05-10-12

UNTAN ENGINEERING & LAND SURVEYING
85 SOUTH 200 EAST - VERNAL, UTAH 84078
(435) 789-1017

SCALE 1" = 1000'
DATE SURVEYED: 04-27-12 DATE DRAWN: 04-30-12

PARTY D.N. G.W. W.M.
WEATHER COLD
REFERENCES G.L.O. PLAT
FILE WHITTING OIL & GAS CORP.

LEGEND:

90° SYMBOL

PROPOSED WELL HEAD.

SECTION CORNERS LOCATED.