

Well Name: **Badding 1-26SX**

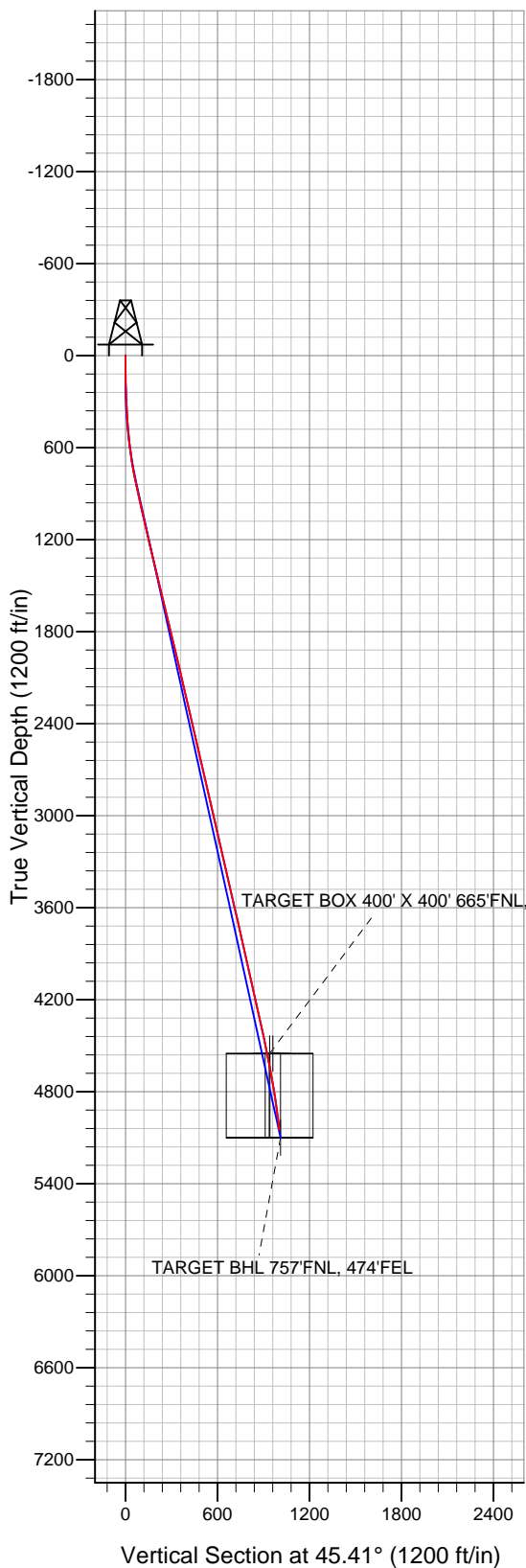
Surface Location: Badding 17-26 Pad Sec.26-T2N-R66W
North American Datum 1983 US State Plane 1983 Colorado Northern Zone

Ground Elevation: 5067.0

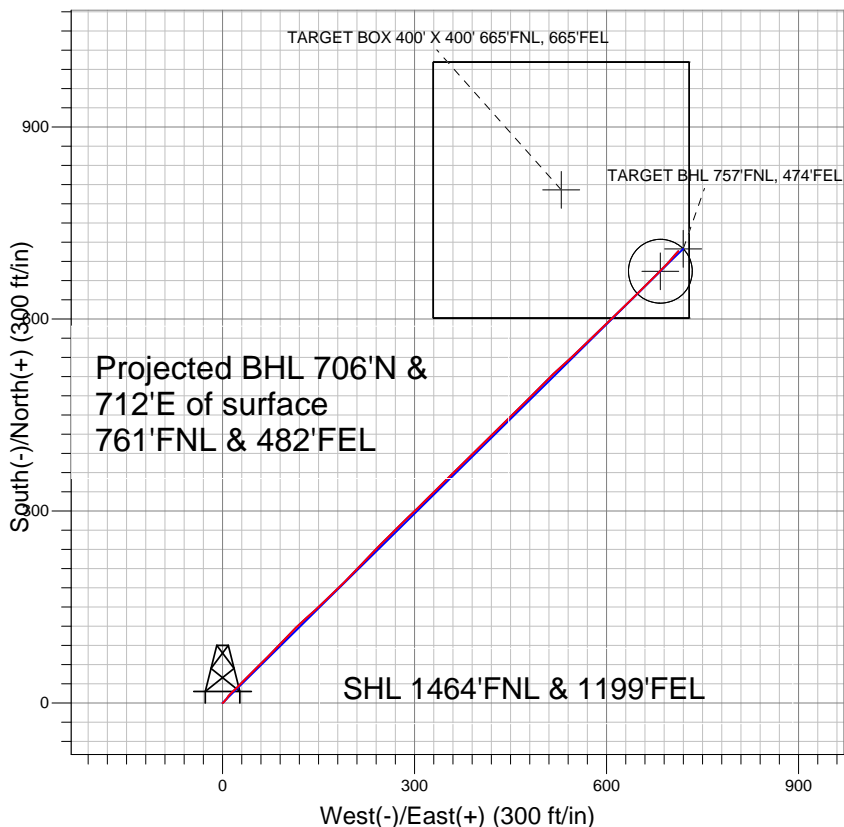
+N/-S	+E/-W	Northing	Easting	Latitude	Longitude
0.0	0.0	1284730.03	3212780.02	40.112471	-104.739224

Original Well Elev WELL @ 5081.0ft (Original Well Elev)

Slot



Anadarko, Weld County CO



LEGEND

- + Badding 1-26SX, Wellbore #1, Plan #2 (5-24-11) V0
- Wellbore #1
- Survey #1

Final Survey Plot

Projected Final Survey -
5157'MD & 5049'TVD @ 1003'VS
7.0 deg Inc 41.8 deg AZ

Project: SEC.26-T2N-R66W
Site: Badding 17-26 Pad Sec.26-T2N-R66W
Well: Badding 1-26SX
Plan: Wellbore #1



Anadarko, Weld County CO

SEC.26-T2N-R66W

Badding 17-26 Pad Sec.26-T2N-R66W

Badding 1-26SX

Wellbore #1

Survey: Survey #1

Standard Survey Report

23 June, 2011



Company:	Anadarko, Weld County CO	Local Co-ordinate Reference:	Well Badding 1-26SX
Project:	SEC.26-T2N-R66W	TVD Reference:	WELL @ 5081.0ft (Original Well Elev)
Site:	Badding 17-26 Pad Sec.26-T2N-R66W	MD Reference:	WELL @ 5081.0ft (Original Well Elev)
Well:	Badding 1-26SX	North Reference:	True
Wellbore:	Wellbore #1	Survey Calculation Method:	Minimum Curvature
Design:	Wellbore #1	Database:	Landmark

Project	SEC.26-T2N-R66W, Weld County, Colorado		
Map System:	US State Plane 1983	System Datum:	Mean Sea Level
Geo Datum:	North American Datum 1983		Using Well Reference Point
Map Zone:	Colorado Northern Zone		Using geodetic scale factor

Site	Badding 17-26 Pad Sec.26-T2N-R66W				
Site Position:		Northing:	1,284,730.44 ft	Latitude:	40.112471
From:	Lat/Long	Easting:	3,212,820.01 ft	Longitude:	-104.739081
Position Uncertainty:	0.0 ft	Slot Radius:	"	Grid Convergence:	0.49 °

Well	Badding 1-26SX					
Well Position	+N-S	0.0 ft	Northing:	1,284,730.03 ft	Latitude:	40.112471
	+E-W	0.0 ft	Easting:	3,212,780.02 ft	Longitude:	-104.739224
Position Uncertainty		0.0 ft	Wellhead Elevation:	ft	Ground Level:	5,067.0 ft

Wellbore	Wellbore #1				
Magnetics	Model Name	Sample Date	Declination (°)	Dip Angle (°)	Field Strength (nT)
	IGRF2010	5/9/2011	8.84	66.83	52,992

Design	Wellbore #1				
Audit Notes:					
Version:	1.0	Phase:	ACTUAL	Tie On Depth:	0.0
Vertical Section:	Depth From (TVD) (ft)	+N/-S (ft)	+E/-W (ft)	Direction (°)	
	0.0	0.0	0.0	45.41	

Survey Program	Date	6/23/2011			
From (ft)	To (ft)	Survey (Wellbore)	Tool Name	Description	
87.0	5,157.0	Survey #1 (Wellbore #1)	MWD	MWD - Standard	

Survey										
Measured Depth (ft)	Inclination (°)	Azimuth (°)	Vertical Depth (ft)	+N/-S (ft)	+E/-W (ft)	Vertical Section (ft)	Dogleg Rate (°/100ft)	Build Rate (°/100ft)	Turn Rate (°/100ft)	
0.0	0.00	0.00	0.0	0.0	0.0	0.0	0.00	0.00	0.00	
87.0	0.40	72.90	87.0	0.1	0.3	0.3	0.46	0.46	0.00	
180.0	0.90	49.50	180.0	0.7	1.2	1.3	0.60	0.54	-25.16	
272.0	1.90	42.50	272.0	2.3	2.7	3.5	1.10	1.09	-7.61	
368.0	3.60	36.10	367.9	5.9	5.6	8.1	1.80	1.77	-6.67	
457.0	4.90	40.00	456.6	11.0	9.7	14.6	1.50	1.46	4.38	
546.0	5.40	45.90	545.2	16.9	15.1	22.6	0.82	0.56	6.63	
634.0	7.40	45.20	632.7	23.7	22.1	32.4	2.27	2.27	-0.80	
723.0	9.40	45.10	720.7	32.9	31.3	45.4	2.25	2.25	-0.11	
812.0	11.80	45.10	808.2	44.5	42.9	61.8	2.70	2.70	0.00	
900.0	12.70	45.00	894.2	57.6	56.1	80.5	1.02	1.02	-0.11	
989.0	13.10	45.30	981.0	71.7	70.2	100.3	0.46	0.45	0.34	
1,077.0	12.70	43.30	1,066.7	85.7	84.0	120.0	0.68	-0.45	-2.27	

Company:	Anadarko, Weld County CO	Local Co-ordinate Reference:	Well Badding 1-26SX
Project:	SEC.26-T2N-R66W	TVD Reference:	WELL @ 5081.0ft (Original Well Elev)
Site:	Badding 17-26 Pad Sec.26-T2N-R66W	MD Reference:	WELL @ 5081.0ft (Original Well Elev)
Well:	Badding 1-26SX	North Reference:	True
Wellbore:	Wellbore #1	Survey Calculation Method:	Minimum Curvature
Design:	Wellbore #1	Database:	Landmark

Survey

Measured Depth (ft)	Inclination (°)	Azimuth (°)	Vertical Depth (ft)	+N/-S (ft)	+E/-W (ft)	Vertical Section (ft)	Dogleg Rate (°/100ft)	Build Rate (°/100ft)	Turn Rate (°/100ft)
1,188.0	12.60	43.90	1,175.0	103.3	100.7	144.3	0.15	-0.09	0.54
1,277.0	13.10	46.10	1,261.8	117.3	114.7	164.1	0.79	0.56	2.47
1,365.0	13.80	47.40	1,347.4	131.3	129.6	184.5	0.87	0.80	1.48
1,454.0	13.60	47.30	1,433.9	145.6	145.1	205.6	0.23	-0.22	-0.11
1,542.0	13.80	46.80	1,519.4	159.8	160.4	226.4	0.26	0.23	-0.57
1,631.0	13.60	45.60	1,605.8	174.4	175.6	247.5	0.39	-0.22	-1.35
1,720.0	13.60	44.90	1,692.3	189.1	190.5	268.4	0.18	0.00	-0.79
1,808.0	13.40	44.00	1,777.9	203.8	204.9	289.0	0.33	-0.23	-1.02
1,897.0	13.10	43.50	1,864.5	218.5	219.0	309.3	0.36	-0.34	-0.56
1,986.0	13.30	44.00	1,951.2	233.2	233.0	329.7	0.26	0.22	0.56
2,074.0	13.40	44.20	2,036.8	247.8	247.2	350.0	0.13	0.11	0.23
2,163.0	12.90	46.00	2,123.5	262.1	261.5	370.2	0.73	-0.56	2.02
2,252.0	13.40	45.30	2,210.1	276.3	276.0	390.5	0.59	0.56	-0.79
2,340.0	13.30	45.80	2,295.8	290.5	290.5	410.8	0.17	-0.11	0.57
2,429.0	13.20	46.10	2,382.4	304.7	305.1	431.2	0.14	-0.11	0.34
2,517.0	12.90	44.90	2,468.1	318.6	319.3	451.1	0.46	-0.34	-1.36
2,606.0	13.20	45.50	2,554.8	332.7	333.6	471.1	0.37	0.34	0.67
2,695.0	12.70	44.50	2,641.6	346.8	347.7	491.1	0.62	-0.56	-1.12
2,783.0	12.70	45.40	2,727.4	360.5	361.3	510.4	0.22	0.00	1.02
2,872.0	12.70	45.80	2,814.2	374.2	375.3	530.0	0.10	0.00	0.45
2,961.0	12.90	46.70	2,901.0	387.9	389.6	549.7	0.32	0.22	1.01
3,049.0	12.80	45.00	2,986.8	401.5	403.6	569.3	0.44	-0.11	-1.93
3,138.0	13.40	45.60	3,073.5	415.7	417.9	589.5	0.69	0.67	0.67
3,227.0	13.40	44.60	3,160.1	430.2	432.6	610.1	0.26	0.00	-1.12
3,315.0	13.10	46.30	3,245.7	444.4	446.9	630.2	0.56	-0.34	1.93
3,404.0	13.00	45.20	3,332.4	458.4	461.3	650.3	0.30	-0.11	-1.24
3,492.0	12.80	44.80	3,418.2	472.3	475.2	670.0	0.25	-0.23	-0.45
3,581.0	12.50	44.10	3,505.0	486.2	488.9	689.5	0.38	-0.34	-0.79
3,670.0	12.90	44.60	3,591.9	500.2	502.5	709.0	0.47	0.45	0.56
3,758.0	13.10	47.60	3,677.6	513.9	516.8	728.8	0.80	0.23	3.41
3,847.0	13.10	47.30	3,764.3	527.6	531.7	749.0	0.08	0.00	-0.34
3,936.0	12.70	46.90	3,851.1	541.1	546.2	768.8	0.46	-0.45	-0.45
4,024.0	12.90	45.80	3,936.9	554.5	560.3	788.3	0.36	0.23	-1.25
4,113.0	12.50	45.90	4,023.7	568.2	574.4	807.9	0.45	-0.45	0.11
4,202.0	12.50	45.90	4,110.6	581.6	588.2	827.2	0.00	0.00	0.00
4,290.0	12.30	47.60	4,196.5	594.5	602.0	846.1	0.47	-0.23	1.93
4,379.0	12.60	46.70	4,283.4	607.6	616.0	865.2	0.40	0.34	-1.01
4,468.0	12.50	43.90	4,370.3	621.2	629.8	884.6	0.69	-0.11	-3.15
4,556.0	12.00	44.50	4,456.3	634.6	642.8	903.2	0.59	-0.57	0.68
4,645.0	11.50	44.50	4,543.4	647.5	655.5	921.4	0.56	-0.56	0.00
4,657.4	11.44	44.92	4,555.6	649.2	657.2	923.8	0.83	-0.47	3.42
TARGET BOX 400' X 400' 665'FNL, 665'FEL									
4,661.1	11.42	45.05	4,559.2	649.8	657.7	924.6	0.83	-0.47	3.44
TARGET CIRCLE 792'FNL, 510'FEL									
4,733.0	11.10	47.60	4,629.7	659.5	667.9	938.6	0.83	-0.45	3.55
4,822.0	10.40	46.20	4,717.2	670.8	680.0	955.2	0.84	-0.79	-1.57
4,911.0	9.00	42.60	4,804.9	681.5	690.5	970.2	1.71	-1.57	-4.04
4,999.0	7.70	41.00	4,892.0	691.0	699.0	982.9	1.50	-1.48	-1.82
5,088.0	7.00	41.80	4,980.2	699.5	706.6	994.3	0.79	-0.79	0.90
5,157.0	7.00	41.80	5,048.7	705.8	712.2	1,002.7	0.00	0.00	0.00
TARGET BHL 757'FNL, 474'FEL									

Company:	Anadarko, Weld County CO	Local Co-ordinate Reference:	Well Badding 1-26SX
Project:	SEC.26-T2N-R66W	TVD Reference:	WELL @ 5081.0ft (Original Well Elev)
Site:	Badding 17-26 Pad Sec.26-T2N-R66W	MD Reference:	WELL @ 5081.0ft (Original Well Elev)
Well:	Badding 1-26SX	North Reference:	True
Wellbore:	Wellbore #1	Survey Calculation Method:	Minimum Curvature
Design:	Wellbore #1	Database:	Landmark

Checked By: _____ Approved By: _____ Date: _____