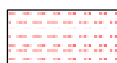


LOG created using L PLOT VH Version 3.0, February 24, 2012, Copyright (C) 1999-2009 Pason Systems Corp.

OPERATOR:	ENCANA OIL & GAS (USA) INC.
WELL:	GRATTAN 4B-30H
LOCATION:	SESE S30 T2N-R64W
COUNTY:	WELD
STATE:	COLORADO
SPOT:	622' FSL, 488' FEL
ELEVATION:	4935' GL, 4948' KB
FIELD:	WATTENBERG
SPUD DATE:	02/10/12 @ 0900 HRS
TD DATE:	02/23/12 @ 1730 HRS
DATES LOGGED:	02/12/12 - 02/23/12
DEPTHS LOGGED:	1022' - 11408'
LOGGERS:	MICHAEL ANDERSON
DRILLING FLUID:	H2O, LSND
DRILLING RIG:	ENSIGN #135
API:	05-123-34362
LOG TYPE:	VERTICAL
SCALE:	1:240 (5 inches per 100 feet)
REMARKS:	Continued on Grattan 4B-30H Horizontal.

LITHOLOGIES



MODIFIERS



Bentonite



Glauconite



Sandstone Stringers



Sandy



Silt Stringers

ENGINEERING SYMBOLS



Bit Change



Connection



Connection Gas



Midnight Depth

ROP		INTERPRETIVE LITHOLOGY	PICTURES	OIL SHOW	DEPTH (FEET)	CUTTINGS	GAMMA R	GAS		LITHOLOGY DESCRIPTION
0	MIN/FT							1	0	
					1000	CEMENT		C1		COLUMBINE LOGGING WAS RIGGED UP ON 02/11/12 MANNED 1-PERSON LOGGING w/ PASON EDR GAS CHROMATOGRAPH
								PPM	20000	
								C2		
								PPM	20000	
								C3		
								PPM	20000	
								C4		
								PPM	20000	
					10					

ARC CHROMATOGRAPHY
UNIT #000031

9.625" SURFACE CASING
SET to 1022' MD

BEGIN LOGGING f/1100' MD
ON 02/12/2012 @ 0245 hrs

CATCHING 100 FT
LAGGED SAMPLES

DRLG w/ WATER

SHYSS: lt gy- gy, s&p thru, vf gr,
sbrd - rd, w srt, pred sft, smwt
firm ip, fri, wk-mod consol, slty-
arg mtx, sl calc, tr lt gn glauc,
grdg to SLTST: gy, vf gr, rd, arg
mtx, tr pyr, no flor, no cut

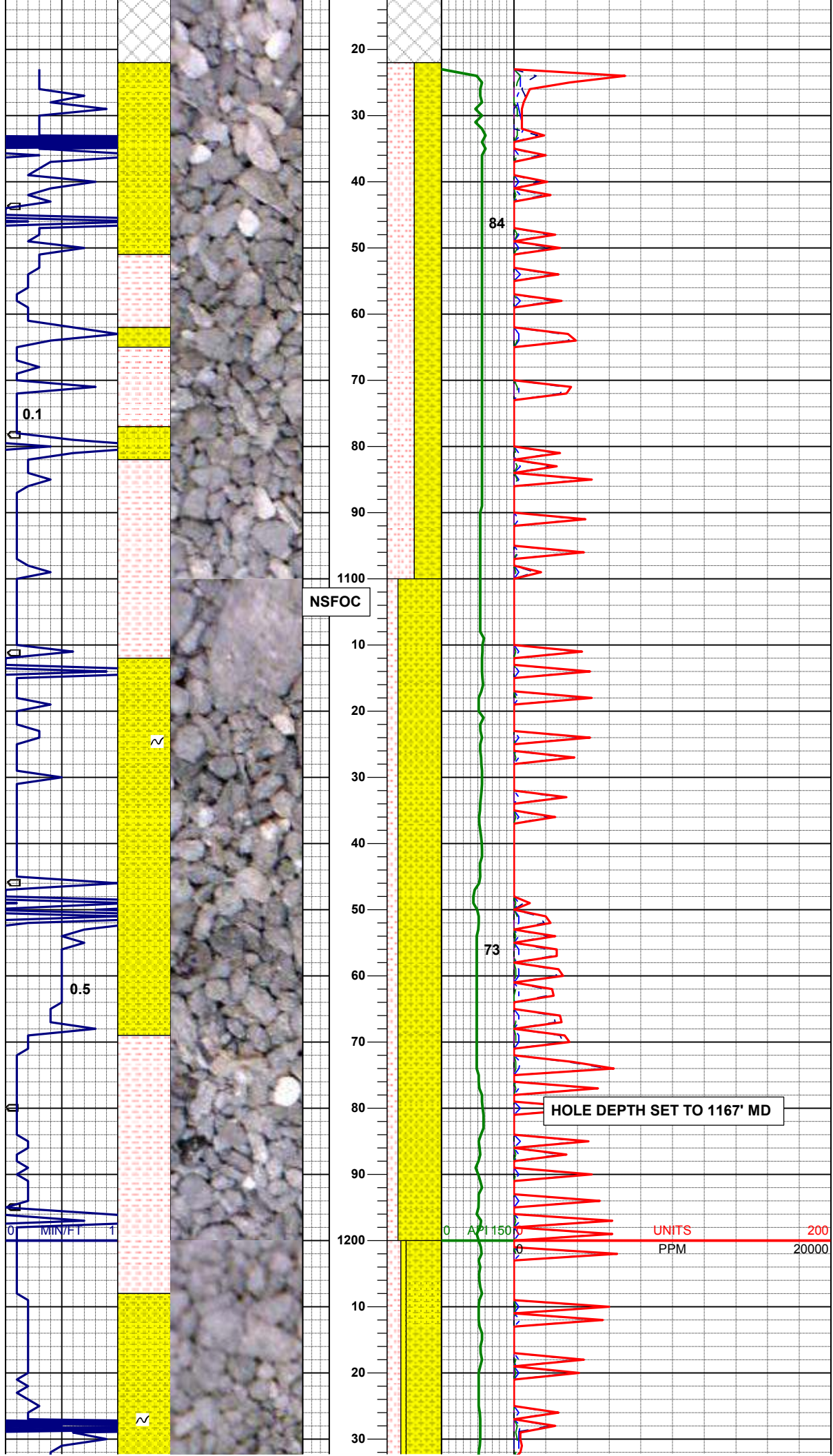
MD 1084'
TVD 1083.99'
INC 0.30°
AZM 161.10°
VS 2.34'

MUD DATA
WT 8.7
VIS 27
YP 2
CK -
pH 7.8
Chl 200

SHYSS: lt gy- gy, s&p thru, vf gr,
sbrd - rd, w srt, pred sft, smwt
firm ip, fri, wk-mod consol, slty-
arg mtx, sl calc, tr lt gn glauc,
grdg to SLTST: gy, vf gr, rd, arg
mtx, tr pyr, no flor, no cut

MD 1176.00'
TVD 1175.96'
INC 2.40°
AZM 236.70°
VS 1.51'

HOLE DEPTH SET TO 1167' MD



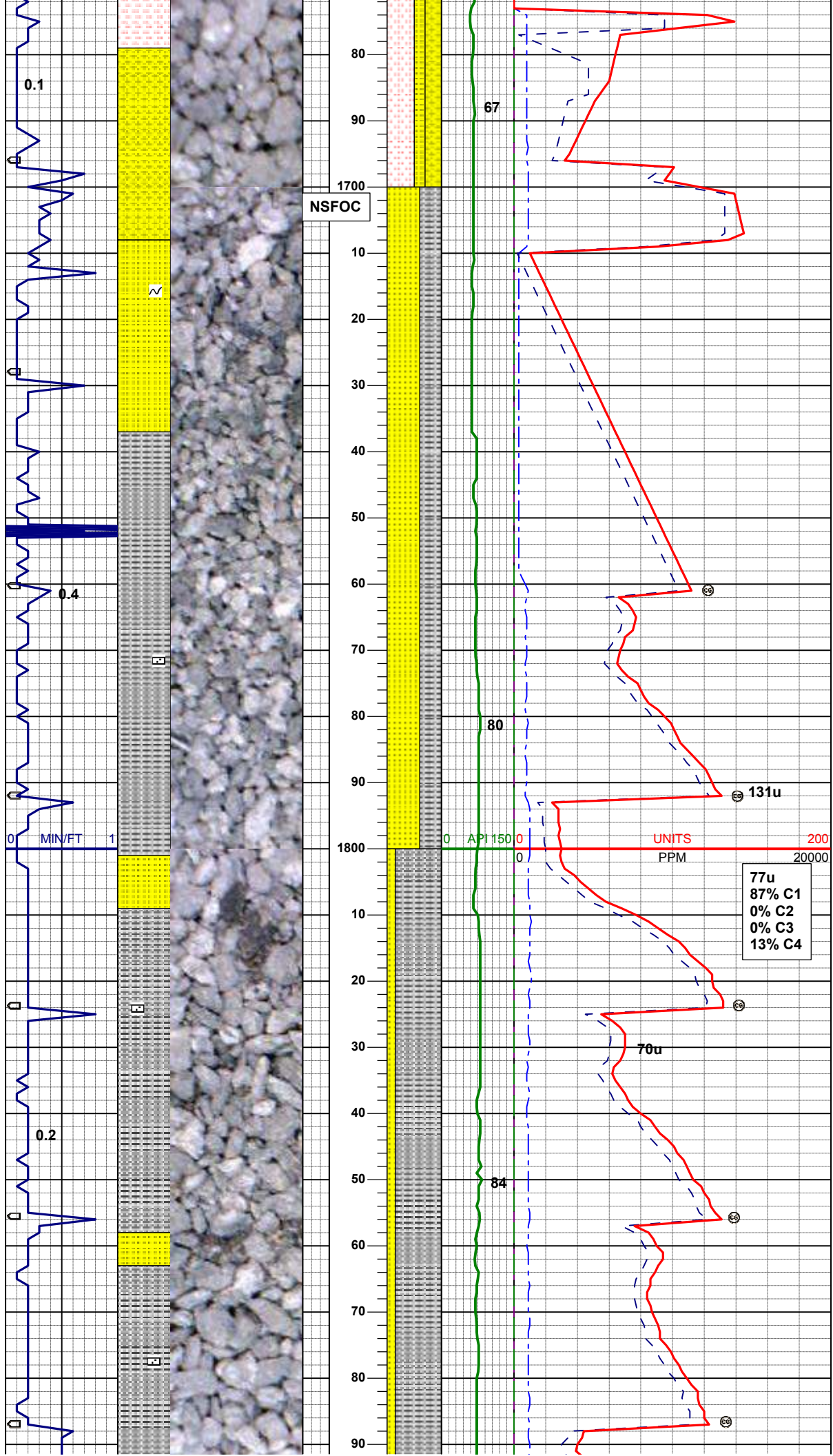
INC	8.2°
AZM	253.8°
VS	-2.70'

MD 1547'
TVD 1544.36'
INC 10.2°
AZM 253.7°
VS -2.83'

SS: wh-clr, trnsp-trnsl, occ s&p,
vf-f gr, sbang-sbrd, p srt, firm,
brit-fri, wk-mod consol, tt clus,
sly-arg mtx, spec lt gn w/ glauc
frag, SLTST: lt gy, spec blk w/
mica frag, sdy ip, vf gr, rd, w srt,
arg mtx, calc thru, mica ip, no
flor, no cut

MD 1642'
TVD 1637.44'
INC 12.8°
AZM 254.0°
VS -2.96'

SLTST: lt gy, spec blk w/ mica
frag, sdy ip, vf gr, rd, w srt, arg
mtx, SHYSS: gy, s&p ip, vf gr,
sbang-sbrd , mod srt, sft-firm ip,
fri, mod consol, arg mtx, SS: wh-
clr, vf-f gr, sbang-sbrd, p srt, firm,
brit-fri, mod consol, tt clus, slty-
arg mtx, spec lt gn w/ glauc frag,
calc thru, mica ip, no flor, no cut



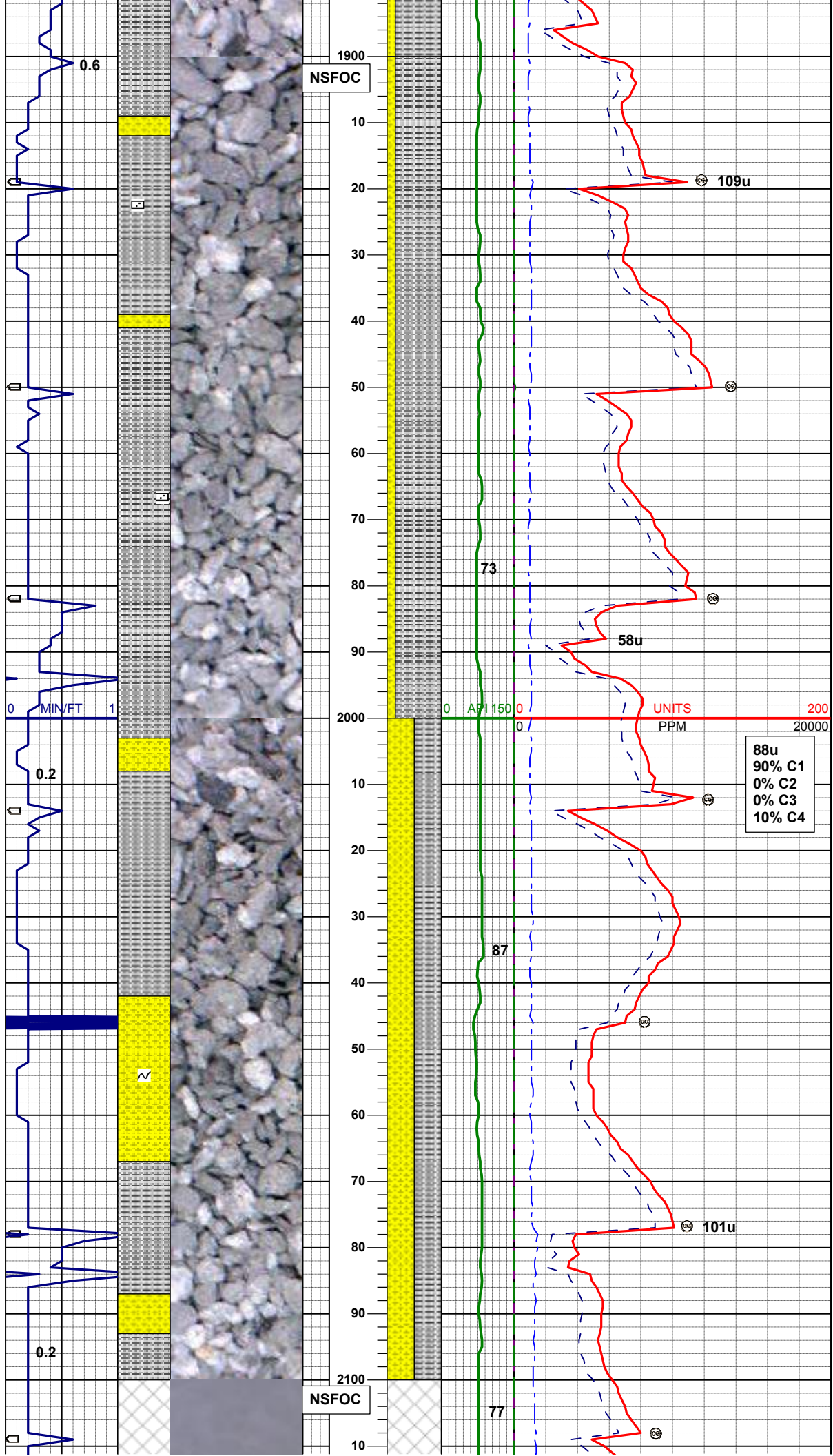
MD 1738'
TVD 1730.77'
INC 14.3°
AZM 253.2°
VS -3.22'

SS: wh-clr, s&p ip, vf-f gr, sbang-sbrd, p srt, sft-firm, brit-fri, mod consol, slty-arg mtx, spec lt gn w/ glauc frag, SLTY SH: ltgy-gy, lt gybrn, sft, fri, sbply- sbbly, slty tex, calc thru, mica ip, no flor, no cut

77u
87% C1
0% C2
0% C3
13% C4

MD 1833'
TVD 1822.80'
INC 14.4°
AZM 251.5°
VS -4.00'

SLTY SH: ltgy-gy, lt gybrn, sft, fri, sbply- sbbly, slty tex, SS: wh-clr, s&p ip, vf-f gr, sbang-sbrd, p srt, sft-firm, brit-fri, mod consol, slty-arg mtx, spec lt gn w/ glauc frag, calc thru, mica ip, no flor, no cut



MD 1928'
TVD 1914.88'
INC 14.1°
AZM 253.8°
VS -4.66'

SLTYSH: ltgy-m gy, sft-firm, v fri,
sbplty- sbbkly, slty-gt tex, grdg -
& intlam w/ SHLYSS: wh, s&p ip,
vf-f gr, sbrd-rd, mod srt, sft-firm,
brit-fri, mod consol, slty-arg mtx,
calc ip, mica ip, no flor, no cut

MUD DATA
WT 8.85
VIS 28
YP 4
CK -
pH 10.0
Chl 200

MD 2023'
TVD 2007.22'
INC 13.1°
AZM 258.8°
VS -3.90'

SLTYSH: ltgy-m gy, occ blk, sft-
mod firm, v fri, sbplty- sbbkly, slty-
gt tex, intlam w/ SHLYSS: wh,
s&p ip, vf gr, sbrd-rd, mod srt,
firm, brit-fri, mod consol, slty-arg
mtx, calc ip, tr lt gn glauc, mica
ip, no flor, no cut

88u
90% C1
0% C2
0% C3
10% C4

MD	2214'
TVD	2193.44'
INC	12.9°
AZM	260.50°
VS	-0.29'

0.1 MIN/FT 1

0.2

2200

0 API 150 0

UNITS PPM

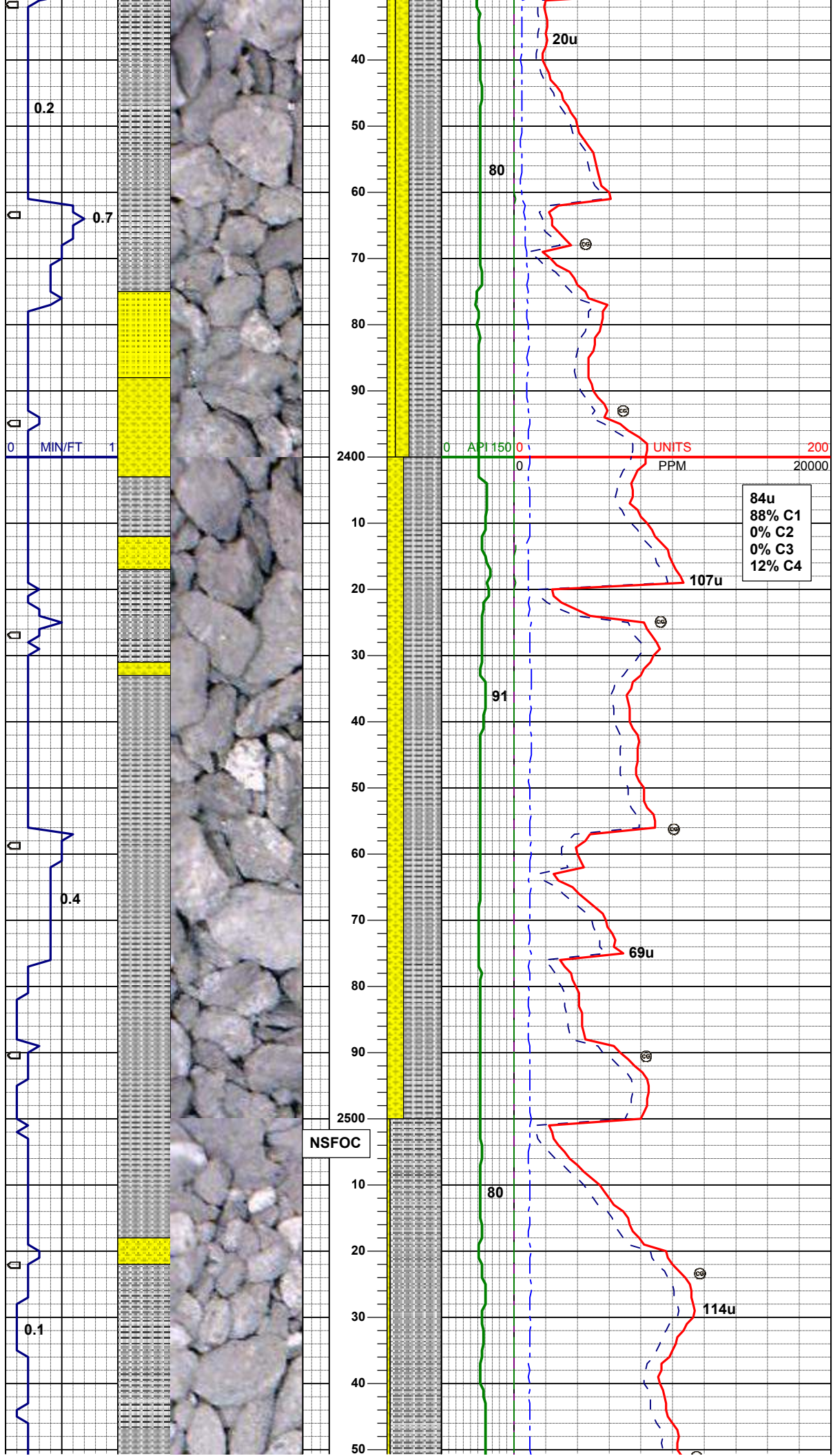
20000

112u
88% C1
0% C2
0% C3
12% C4

2300

NSFOC

WORKED ON IRON DERRICK



SLTYSH: ltgy-m gy, gybrn, sft-mod firm, fri, sbplty- sbbly, slty-gt tex, intlam w/ SHLYSS: wh, lt gy-lt gybrn, vf-f gr, sbrd-rd, mod srt, firm-hd, brit-fri, mod consol, slty-arg mtx, calc ip, occ free calcite, tr pyr, tr lt gn glauc, mica ip, spec yel-org ss flor, no cut

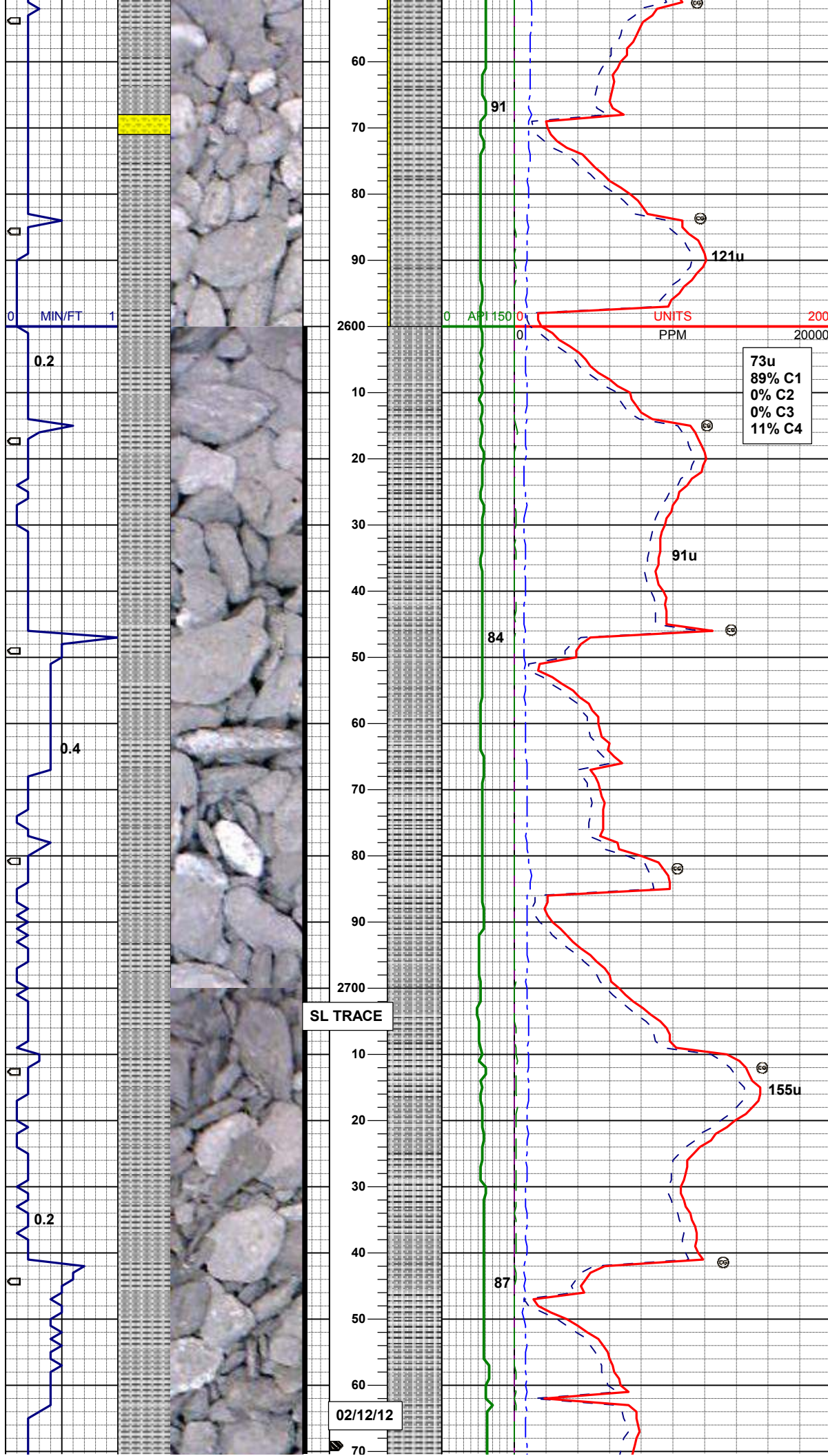
MD 2404'
TVD 2378.88'
INC 12.4°
AZM 256.3°
VS 2.83'

SLTYSH: ltgy-m gy, gybrn, sft-mod firm, fri, sbplty- sbbly, slty-gt tex, grdg - SHLYSS: sped lt gy-lt gybrn, sme wh, vf-f gr, sbrd-rd, mod srt, firm-hd, brit-fri, mod consol, slty-arg mtx, sl calc ip, tr pyr, tr lt gn glauc, mica ip, spec yel-org ss flor, no cut

MD 2499'
TVD 2471.54'
INC 13.1°
AZM 255.3°
VS 3.39'

SLTYSH: ltgy-m gy, spec brn-blk w/ mica frag thru, sft-mod firm, fri, calc-arg cmt, sbplty- sbbly,

rthy-gt tex, sl calc ip, tr shlyss, tr
pyr, no flor, no cut



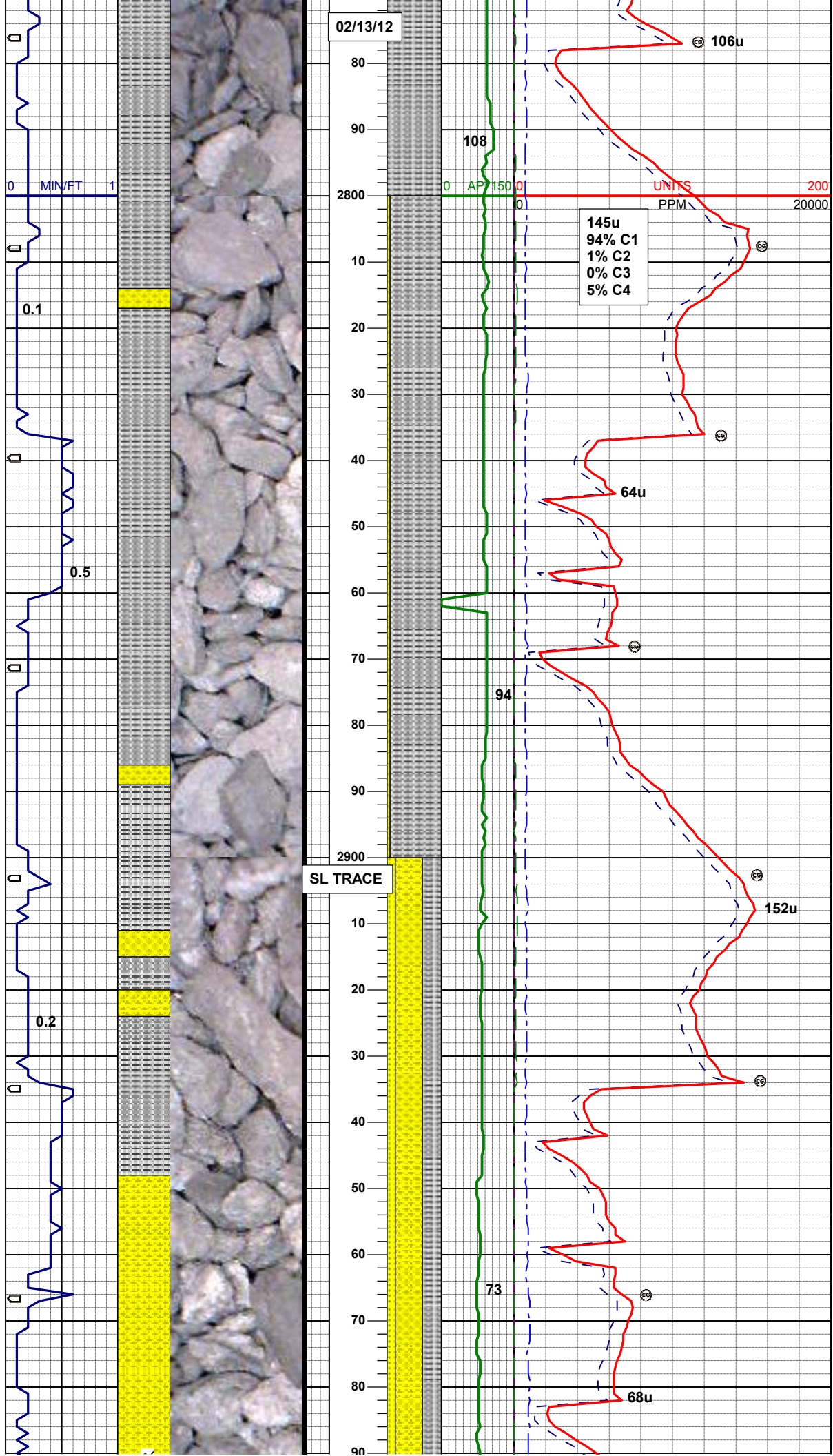
MD 2595'
TVD 2565.19'
INC 12.3°
AZM 254.7°
VS 3.67'

73u
89% C1
0% C2
0% C3
11% C4

SLTYSH: pred ltgybm, occ gyblk,
spec brn-blk w/ s mica frag thru,
sft-mod firm, fri, calc-arg cmt,
pred sbply-sbfis ip, sme sbbiky,
rthy-gt tex, sl calc ip, tr wh cly, tr
shlyss, tr pyr, no flor, slow diffuse
mod bri blwh mky cut

MD 2690'
TVD 2658.08'
INC 11.9°
AZM 252.0°
VS 3.37'

SLTYSH: pred ltgybrn, rr blk,
s&p ip, lam brn-blk w/ mica. ip,
sft-mod firm, smwt fri, arg cmt,
pred sbply-sbfis ip, sme sbbiky,
rthy-gt tex, non calc, tr shlyss, tr
pyr, no flor, v slow diffuse dul
mky cut



MD 2785'
TVD 2750.98'
INC 12.2°
AZM 254.9°
VS 3.09'

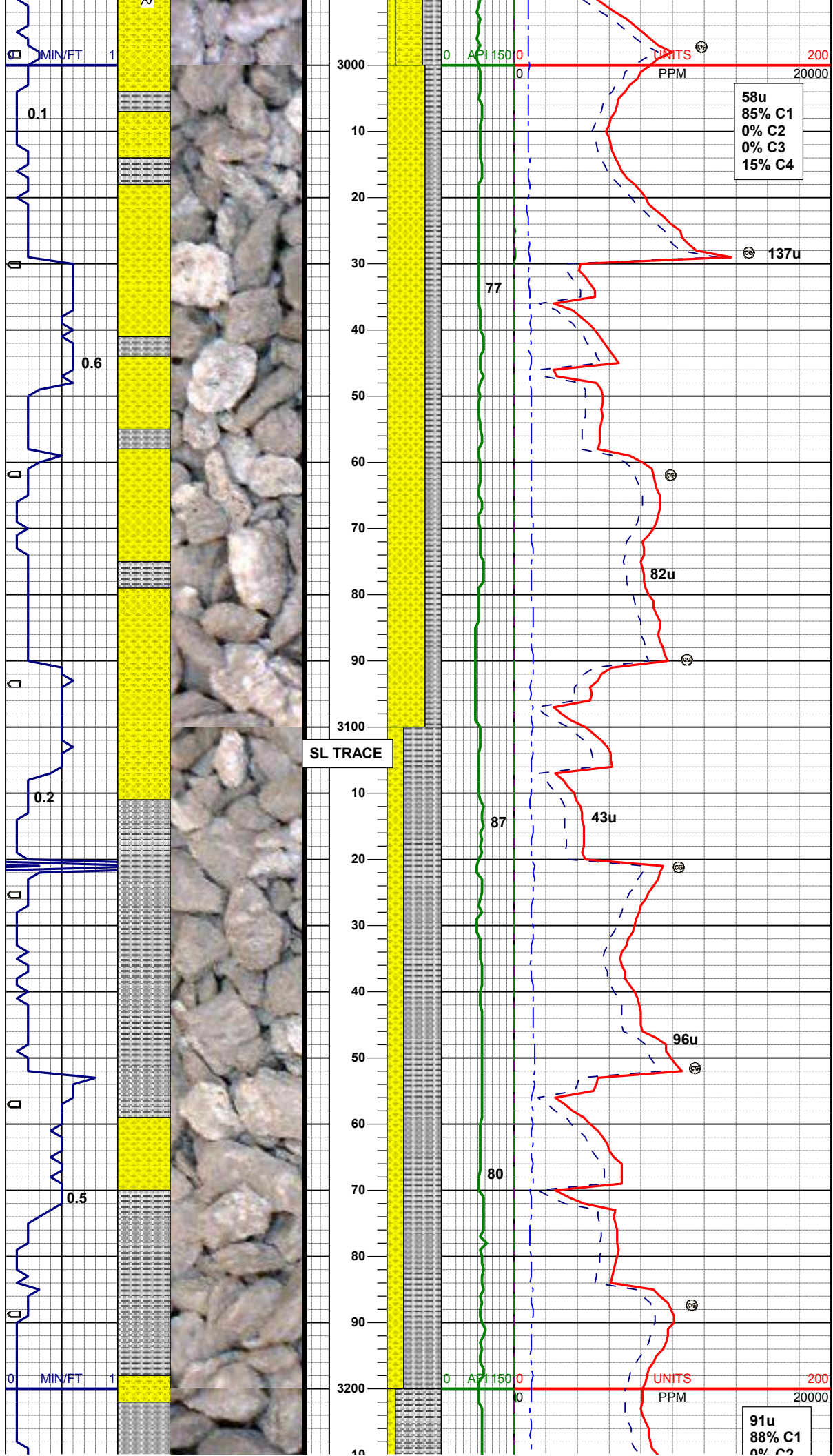
145u
94% C1
1% C2
0% C3
5% C4

SLTYSH: lt gy-dk gy, s&p ip, spec blk ip, sft-firm, arg mtx, pred sbplty-sbfis ip, sme sbblky, rthy-gt tex, non calc, tr shlyss, tr wh cly, no flor, slow diffuse wh mky cut

MD 2880'
TVD 2843.96'
INC 11.5°
AZM 254.8°
VS 3.30'

SHLYSS: lt gy-lt gybrn, s&p ip, vf gr, sbang-sbrd, mod srt, firm, brit -fri, w consol, slty-arg mtx, calc cmt, SLTYSH: ltgy-dk gy, sft-firm, sbplty- sbblky, rthy-gt tex, SS: wh, vf-f gr, sbang-sbrd, mod srt, hd, brit-fri, mod consol, calc thru, tr lt gn glauc, mica ip, tr fos, spec dul orng ss flor, slow diffuse mod bri wh mky cut

MD 2976'
TVD 2937.98'
INC 11.8°
AZM 251.1°
VS 2.85'



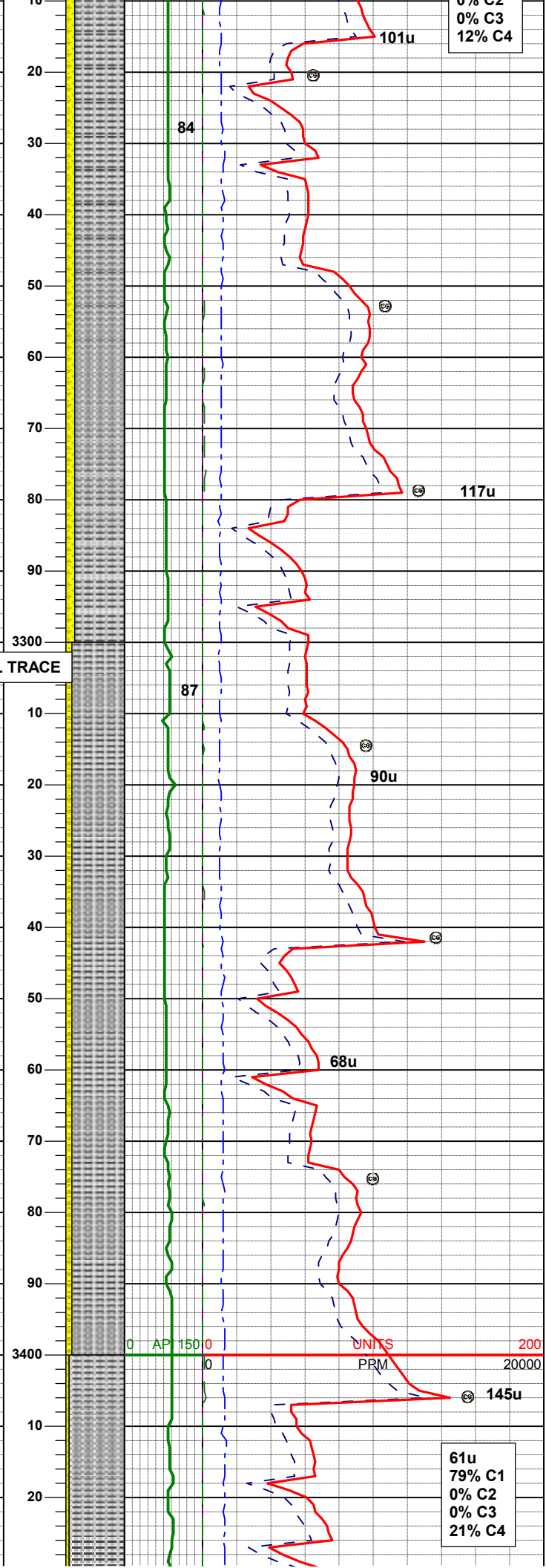
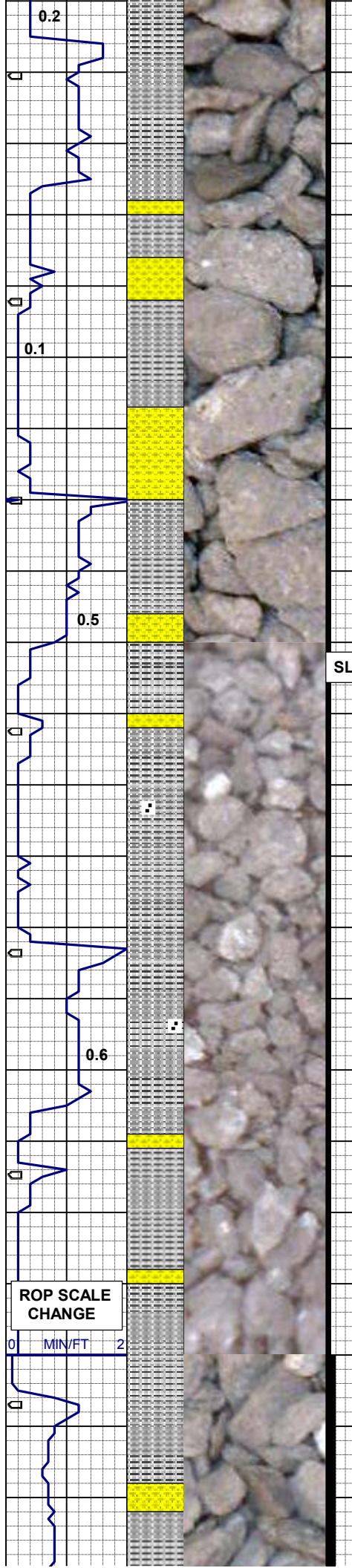
MD 3039'
TVD 2999.58'
INC 12.4°
AZM 249.5°
VS 1.94'

SHLYSS: wh, clr-trnsl, lt gy-lt
gybrn, s&p ip, vf gr, sbang-sbrd,
mod srt, firm, brit-fri, w consol,
silty-arg mtx, calc cmt, intlam w/
SLTYSH: ltgy-dk gy, sft-firm,
sbply- sbbiky, rthy-gt tex, calc
thru, tr lt gn glauc, mica ip, tr fos,
spec dul org ss flor, slow diffuse
mod bri wh mky cut

MD 3103'
TVD 3062.09'
INC 12.4°
AZM 249.6°
VS 0.81'

SHLYSS: wh, clr-trnsl, lt gy-lt
gybrn, s&p ip, vf gr, sbrd-rd, w
srt, firm, fri, mod consol, silty-arg
mtx, intlam w/ SLTYSH: ltgy-
gybrn, firm, sbply-sbbiky, gt tex,
non calc, tr lt gn glauc, mica ip, tr
fos, spec dul org ss flor, slow
diffuse lt blwh mky cut

MD 3166'
TVD 3123.61'
INC 12.5°
AZM 252.6°
VS 0.07'



0% C2
0% C3
12% C4

MD 3230'
TVD 3186.10'
INC 12.4°
AZM 252.1°
VS -0.39'

SLTYSH: ltgy-gybrn, firm, sbplty-sbblky, gt tex, intlaml w/
SHLYSS: wh, clr-trnsl, lt gy-lt gybrn, s&p ip, vf gr, sbrd-rd, w srt, firm, fri, mod consol, slty-arg mtx, non calc, tr lt gn glauc, mica ip, tr fos, spec dul orgn ss flor, slow diffuse lt blwh mky cut

MD 3293'
TVD 3247.74'
INC 11.5°
AZM 252.6°
VS -0.82'

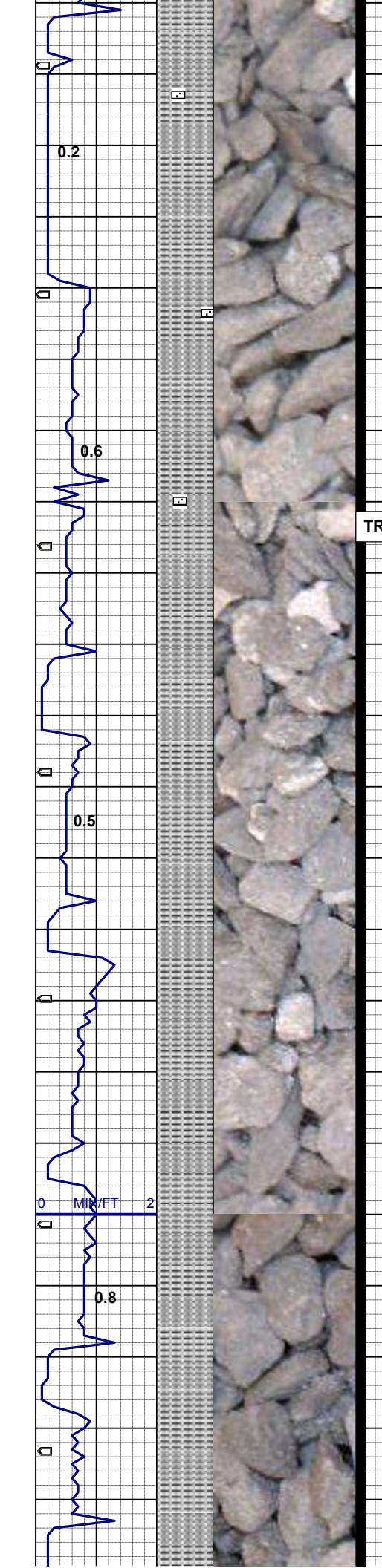
SLTYSH: ltgy-gybrn, firm, sbplty-sbblky, gt tex, intlaml w/
SHLYSS: wh, clr-trnsl, lt gy-lt gybrn, s&p ip, vf gr, sbrd-rd, w srt, firm, fri, mod consol, slty-arg mtx, non calc, tr lt gn glauc, mica ip, tr fos, no flor, v sl stmg lt blwh mky cut

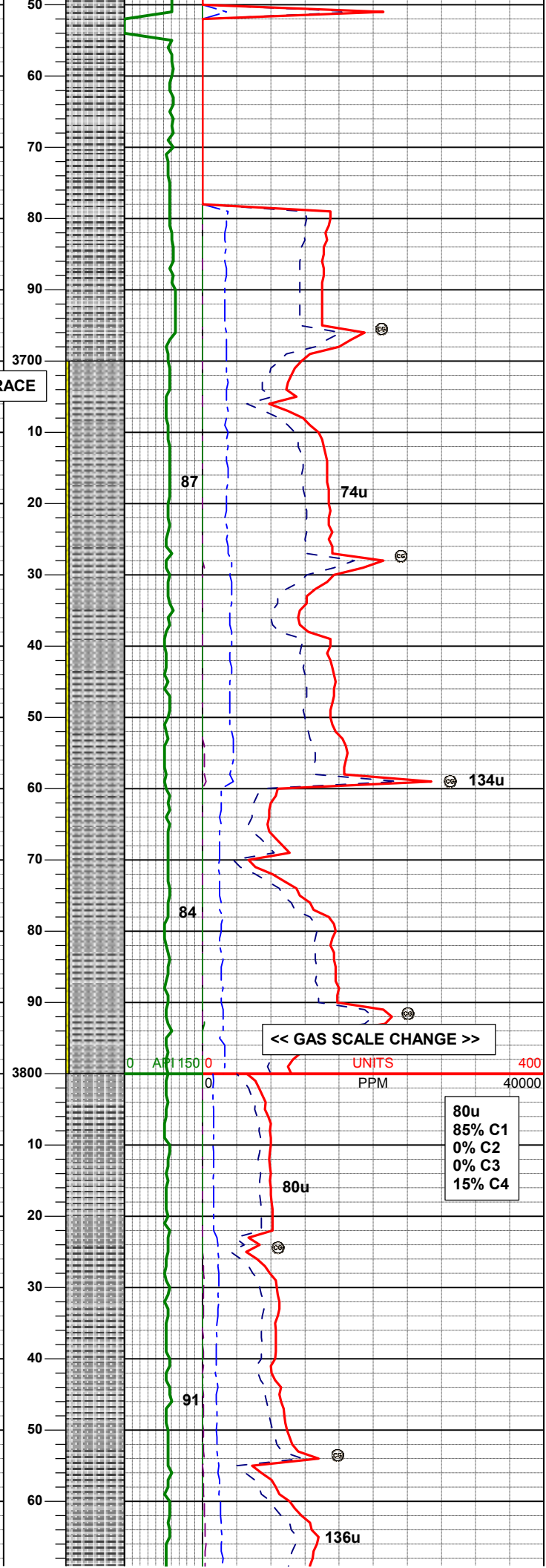
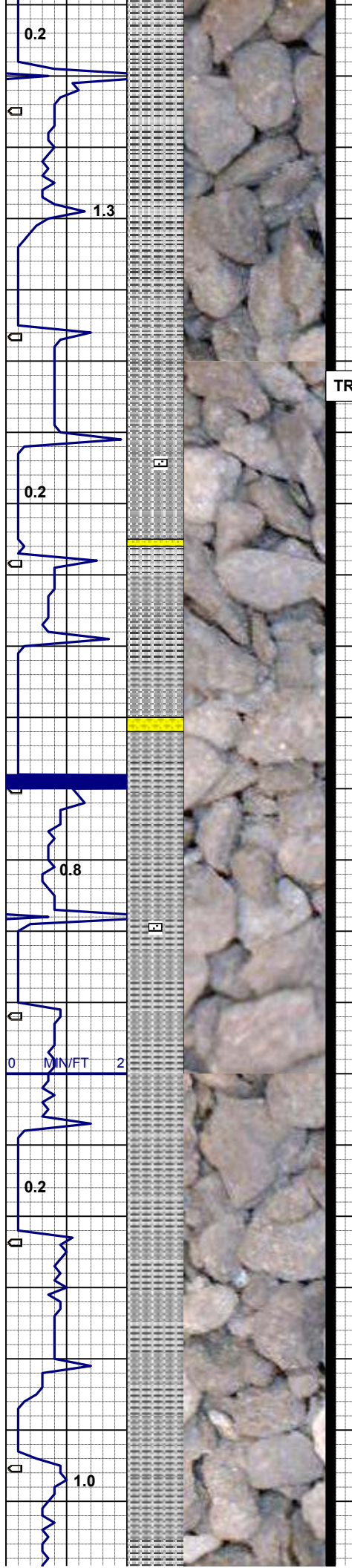
MD 3357'
TVD 3310.49'
INC 11.2°
AZM 252.2°
VS -1.23'

61u
79% C1
0% C2
0% C3
21% C4

MD 3420'
TVD 3372.33'
INC 10.8°
AZM 253.9°
VS -1.49'

SLTYSH: m av-dk av, avhbk firm





SLTYSH: m gy-dk gy, gyblk, firm, sbplty-sbfls ip, occ sbblky, sbwxy -gt tex, non calc, sme aren grdg -shlyss, mica ip, tr pyr, tr fos, tr carb cly, dul orng cly flor, v lt bl mky cut

MD 3674'
TVD 3621.18'
INC 12.6°
AZM 258.6°
VS -1.01'

MD 3706'
TVD 3652.40'
INC 12.7°
AZM 259.0°
VS -0.45'

MD 3737'
TVD 3682.66'
INC 12.4°
AZM 259.1°
VS 0.11'

SLTYSH: m gy-dk gy, gyblk, firm, sbplty-sbblky, slty-gt tex, v sl calc, sme aren grdg -shlyss, mica ip, tr pyr, tr carb, dul orng ss flor, sl stmg lt bl mky cut

MD 3769'
TVD 3713.92'
INC 12.4°
AZM 260.1°
VS 0.75'

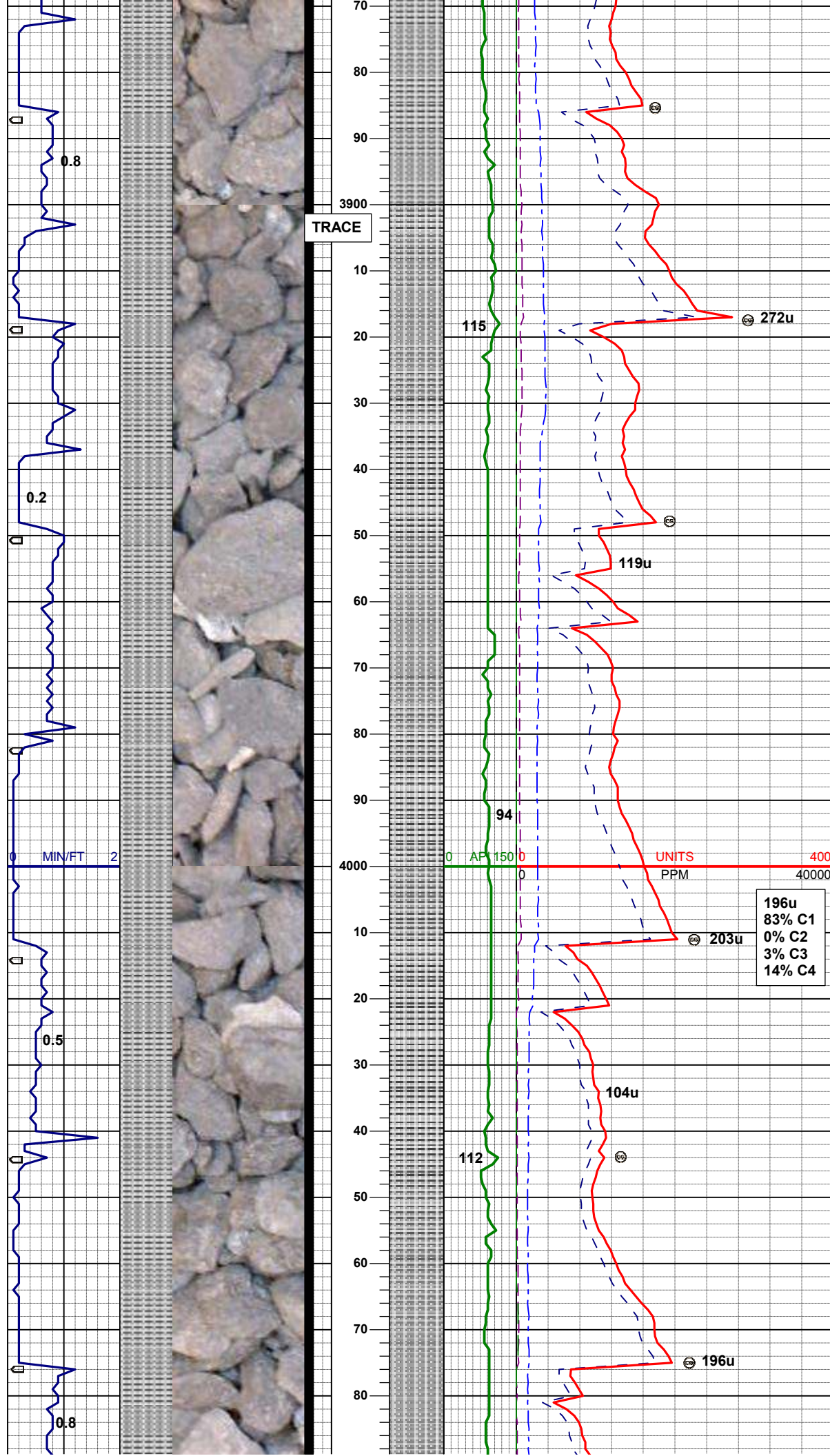
MD 3801'
TVD 3745.15'
INC 12.7°
AZM 258.5°
VS 1.36'

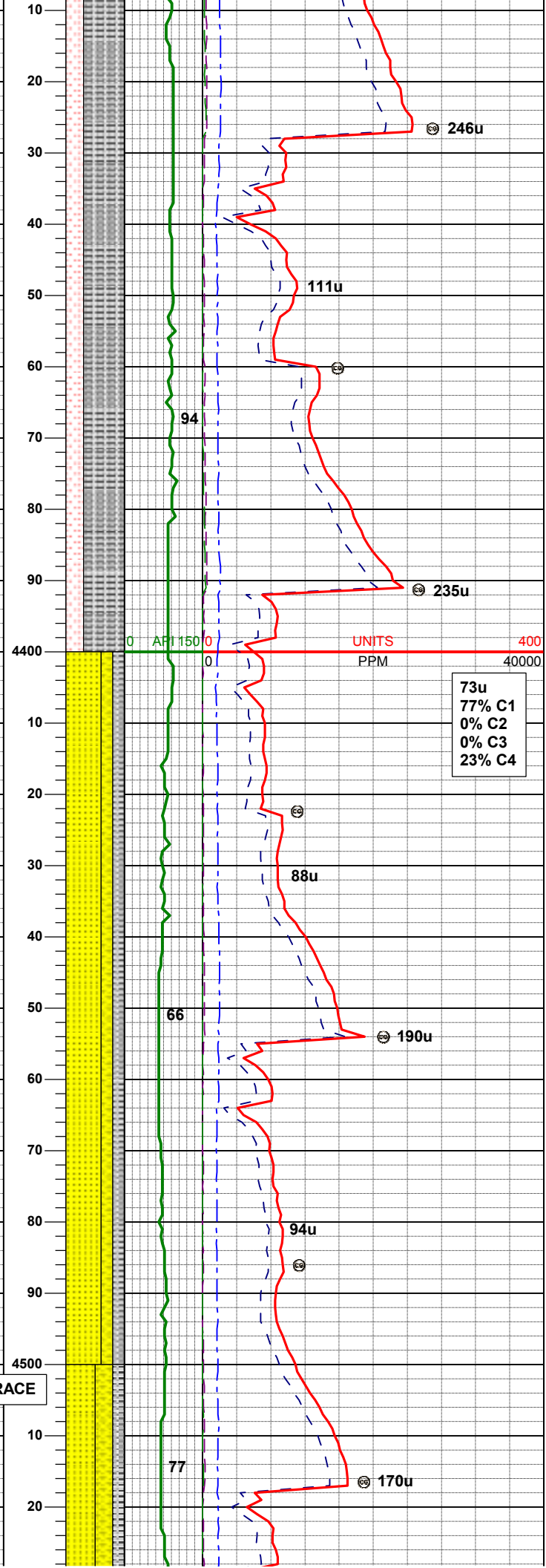
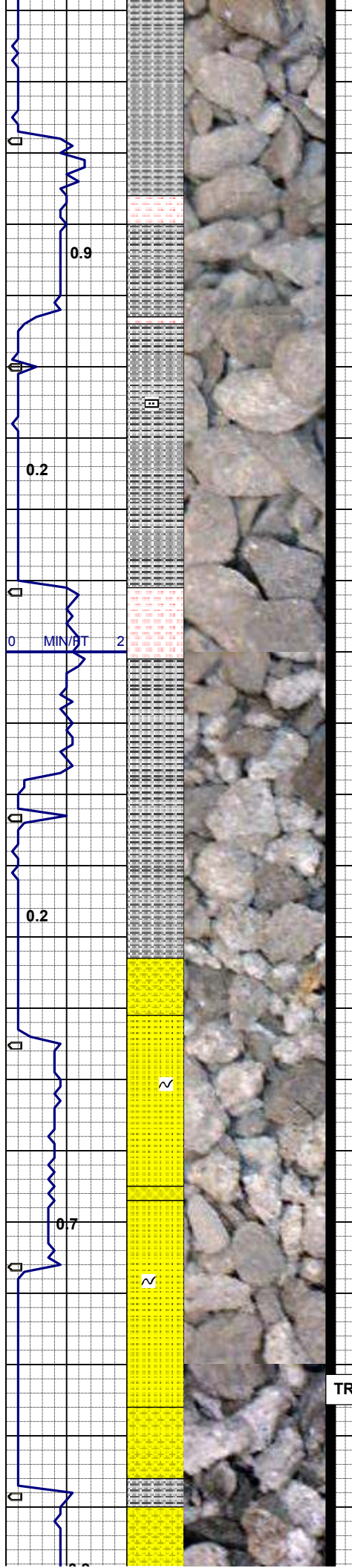
MD 3833'
TVD 3776.37'
INC 12.7°
AZM 258.0°
VS 1.85'

SLTYSH: lt gy-dk gy, firm, sbplty-plty, occ fis, slty-gt tex, v sl calc, mica ip, tr pyr, tr carb, no flor, slow diffuse wh mky cut

MD 3865'
TVD 3807.59'
INC 12.7°
AZM 257.5°
VS 1.85'

MD	4055'
TVD	'
INC	11.9°
AZM	257.2°
VS	'





MD 4341'
TVD 4271.53'
INC 12.4°
AZM 256.8°
VS 6.34'

SLTYSH: lt gy-m gy, occ dk gy, firm, sbplty-sbblky, sbwxy ip, grd g - SLTST: v lt gy, sdy ip, gt tex, vf gr, rd, w srt, arg mtx, calc thru, mica ip, abnt fos frag, tr pyr, tr carb, tr bri yel-gn mnrl flr, slow diffuse lt bl mky cut

MD 4404'
TVD 4333.13'
INC 11.8°
AZM 252.5°
VS 6.45'

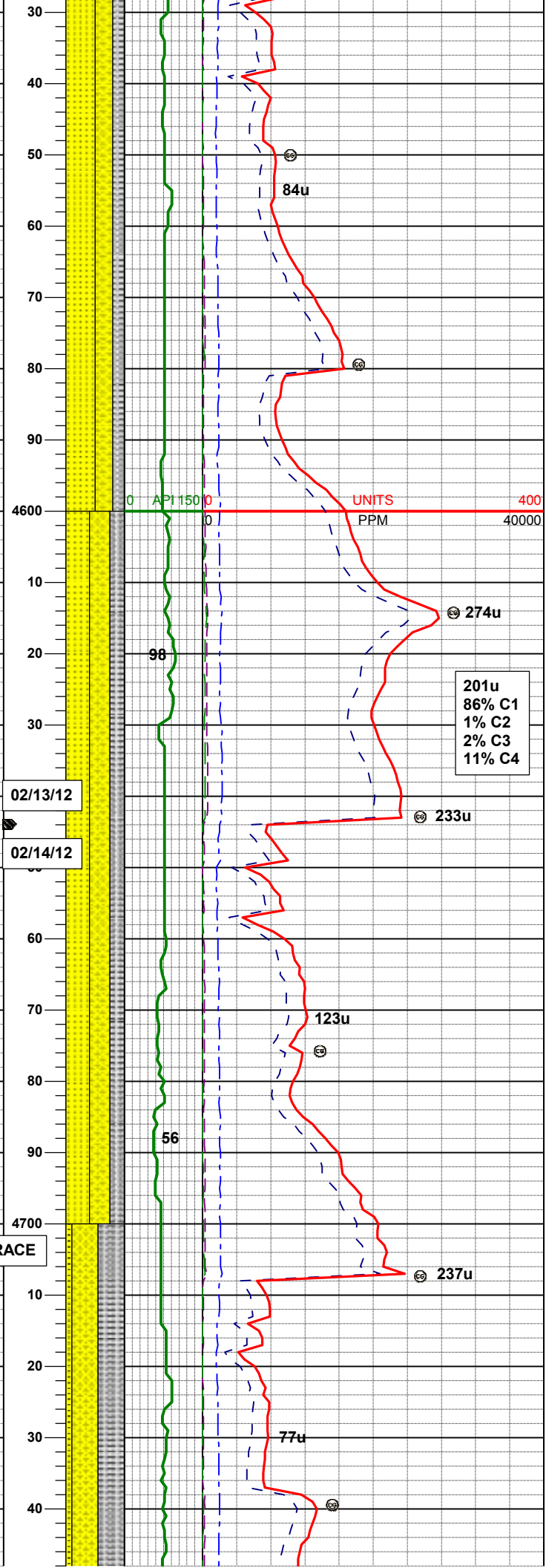
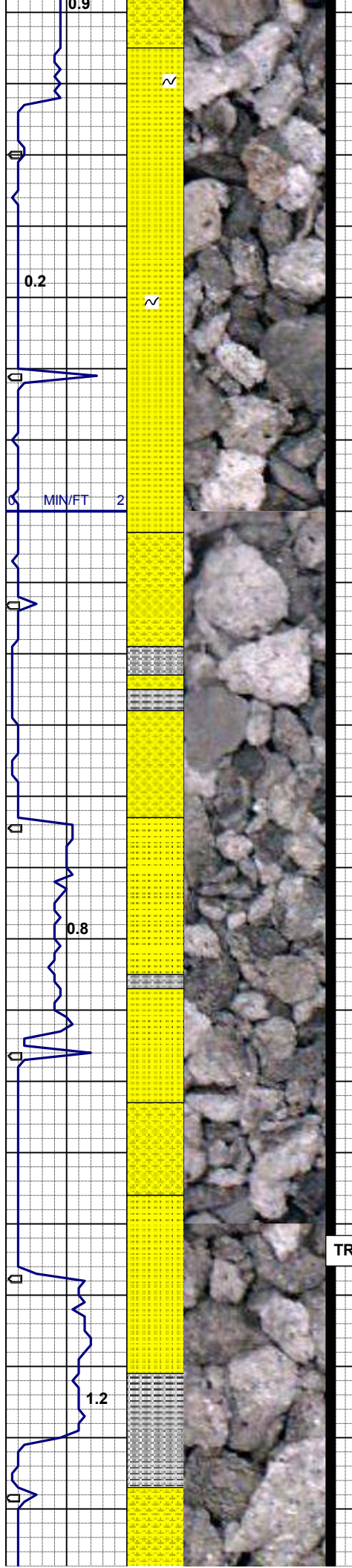
73u
77% C1
0% C2
0% C3
23% C4

PROG TOP SUSSEX
@ 4379' TVD; LOGGER
TOP @ 4363' TVD

SS: lt gy-wh, trnsl, sbplty, tt clus, pr srt, p por, sbang-sbrnd, arg mtx, v sl calc cmt, gt tex, spec gn w/ glauc, intbd w/ SHYSS: gy-m gy, vf gr, mod srt, brit, tt clus, SLTYSH: lt gy-m gy, occ dk gy, firm, sbplty-sbblky, gt-sbwxy tex, tr pyr, spec bri yel-gn mnrl flr, fnt slow mky wh cut

MD 4468'
TVD 4395.67'
INC 12.7°
AZM 252.7°
VS 6.06'

MD 4531'
TVD 4457.02'



TVD 4457.02'
INC 13.6°
AZM 252.1°
VS 5.59'

SS: lt gy-wh, trnsl, sbplty, tt clus, pr srt, p por, sbang-sbrnd, arg mtvx, v sl calc cmt, gt tex, spec gn w/ glauc, intbd w/ SHYSS: gy-m gy, vf gr, mod srt, brit, tt clus, SLTYSH: lt gy-m gy, occ dk gy, firm, sbplty-sbblky, gt-sbwxy tex, tr pyr, mica thru, spec bri yel-gn mnrl flr, fnt slow purp-wh mky cut

MD 4595'
TVD 4519.29'
INC 13.1°
AZM 249.8°
VS 4.75'

201u
86% C1
1% C2
2% C3
11% C4

SS: lt gy-wh, trnsl, sbplty, tt clus, pr srt, p por, sbang-sbrnd, arg mtvx, v sl calc cmt, gt tex, intbd w/ SHYSS: gy-m gy, vf gr, mod srt, brit, tt clus, SLTYSH: lt gy-m gy, occ dk gy, firm, sbplty-sbblky, gt-sbwxy tex, tr pyr, mica thru, fnt slow purp-wh mky cut

MD 4658'
TVD 4580.69'
INC 12.8°
AZM 245.1°
VS 3.08'

MD 4721'
TVD 4642.01'
INC 13.7°
AZM 248.2°
VS 1.19'

SLTYSH: lt gy-m gy, occ dk gy, firm, sbplty-sbblky, gt-sbwxy tex, SHYSS: av-m av, vf gr, mod srt

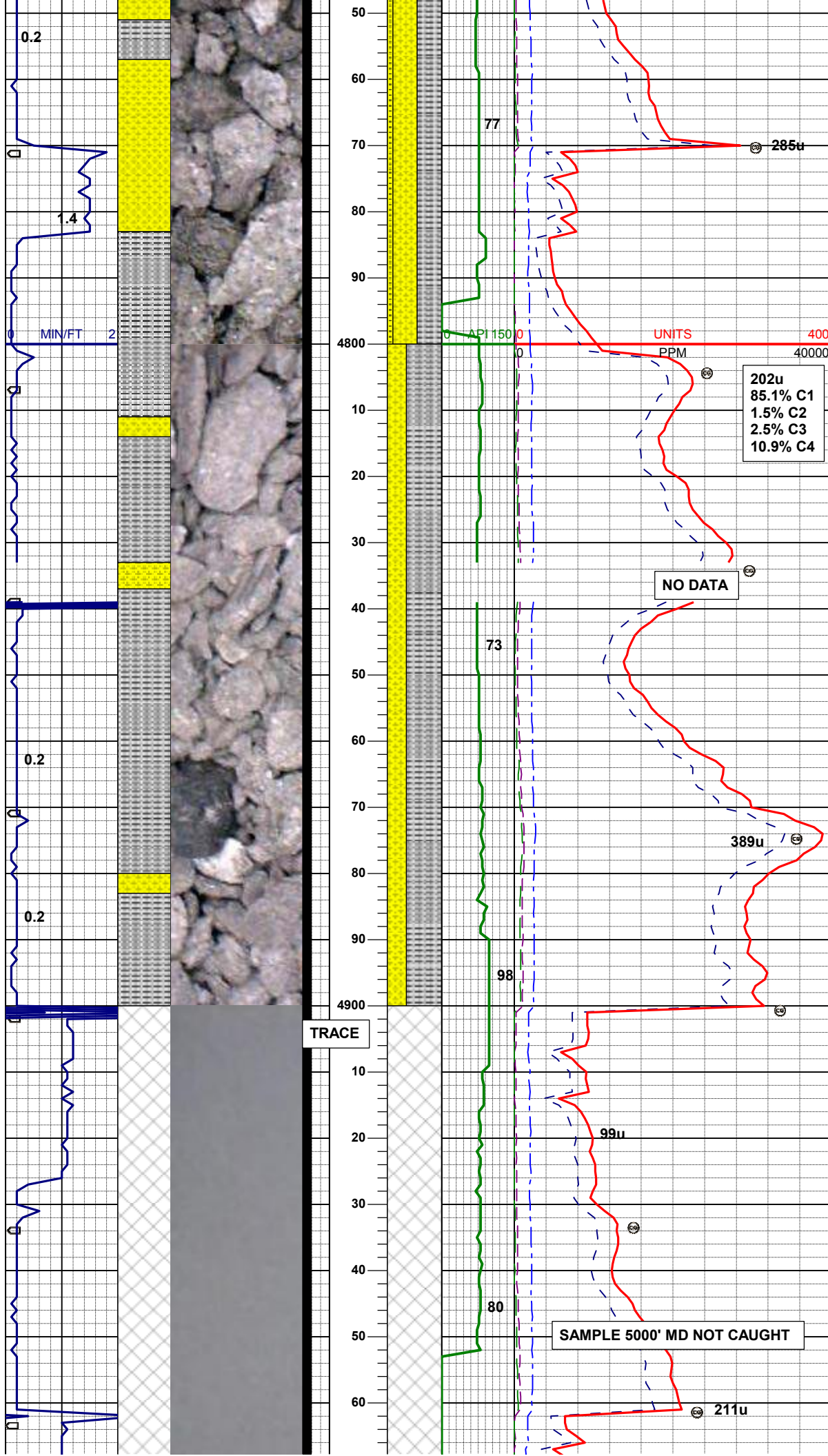
brt, SS: gy, argy, w, gr, mod str,
cmt, tt clus, SS: lt gy-wh, trnsl,
sbplty, tt clus, pr srt, p por, sbang
-sbrnd, arg mtz, sl calc cmt, gt
tex, tr pyr, rr fos frag, mica thru,
fnt slow purp-wh mky cut

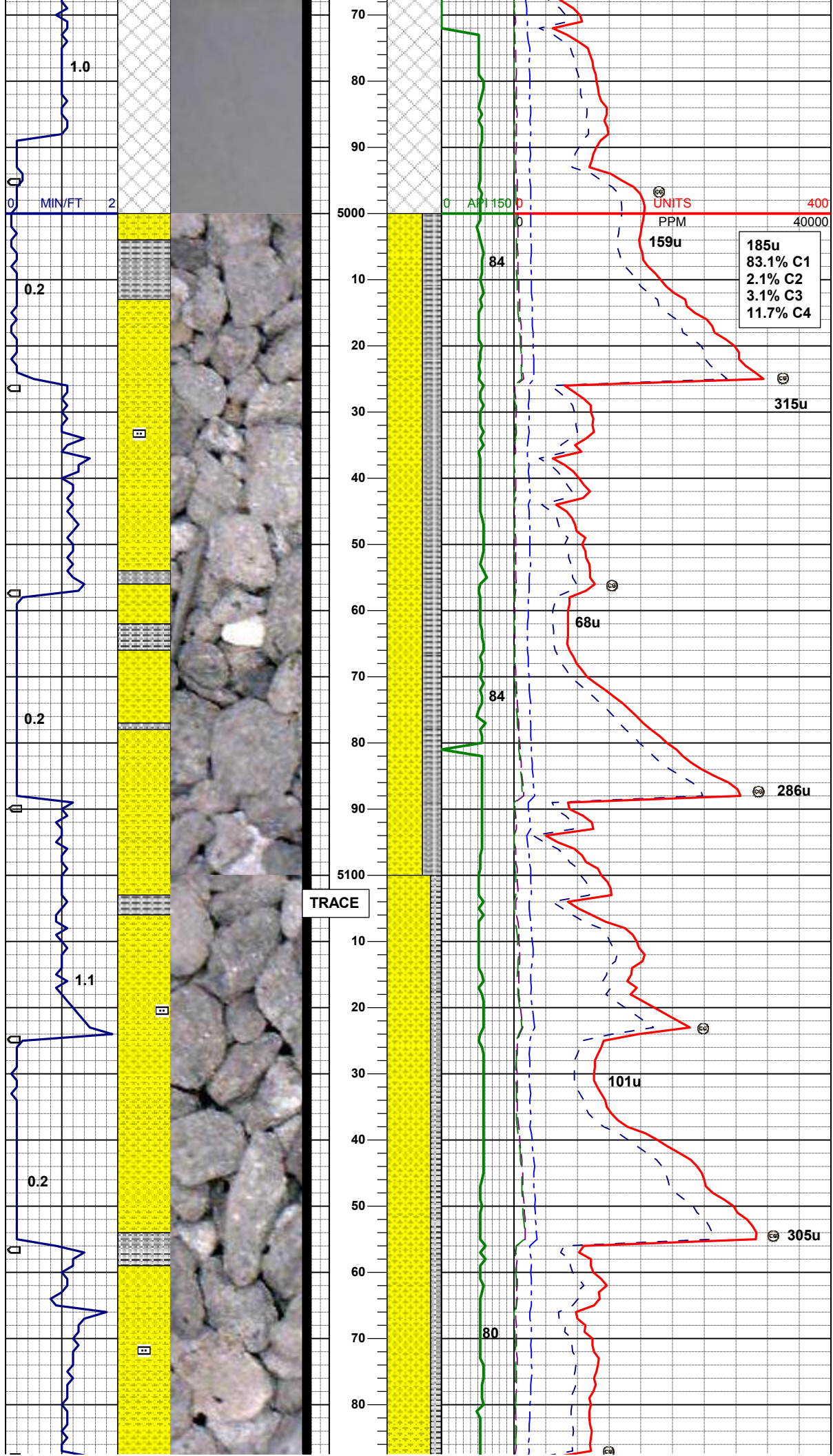
MD 4785'
TVD 4704.18'
INC 13.8°
AZM 252.6°
VS 0.17'

MD	4848'
TVD	4765.55'
INC	12.3°
AZM	254.0°
VS	-0.08'

SLTYSH: It gy-gybrn, mod sft-firm, sbplyt-sbbly, gt-sbwxy tex, SHYSS: off wh-gybrn, vf gr, p srt, brit, tt clus, tr pyr, mica frag thru, v tr bri yel-gn mnrl flor, fnt slow blwh mky cut

MD	4912'
TVD	4828.21'
INC	11.2°
AZM	255.4°
VS	0.02'





MD 4975'
TVD 4890.01'
INC 11.2°
AZM 257.6°
VS 0.50'

185u
83.1% C1
2.1% C2
3.1% C3
11.7% C4

MD 5039'
TVD 4952.90'
INC 10.1°
AZM 258.5°
VS 1.28'

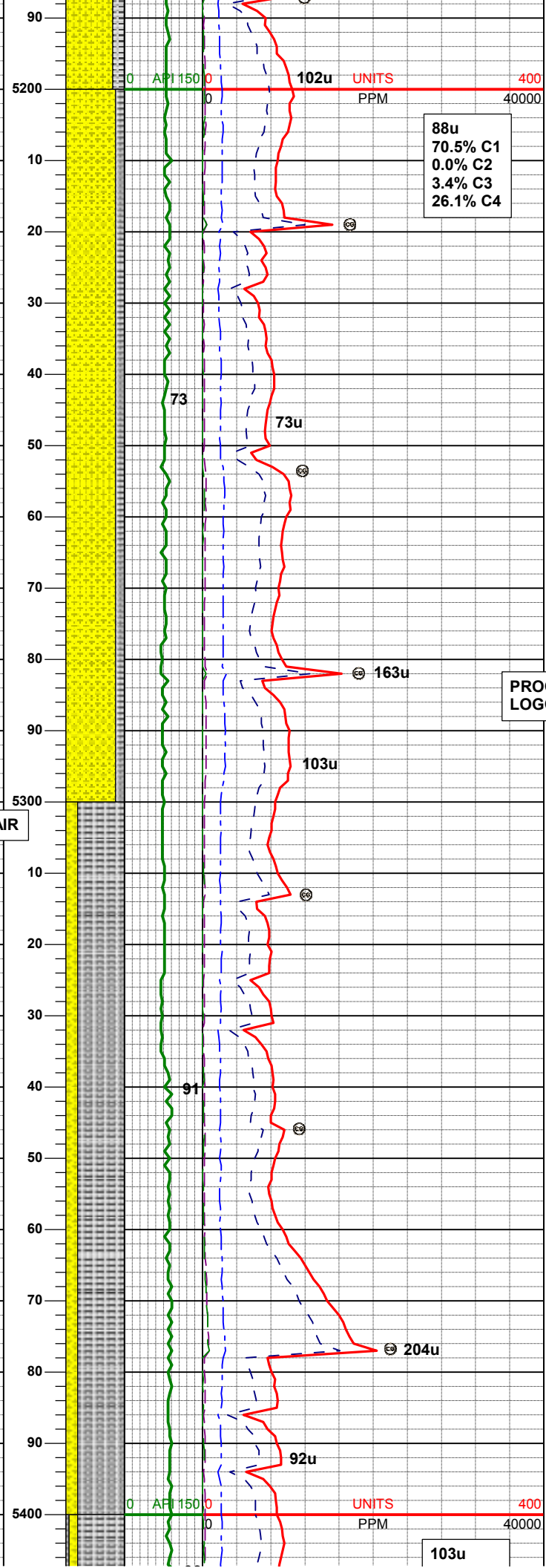
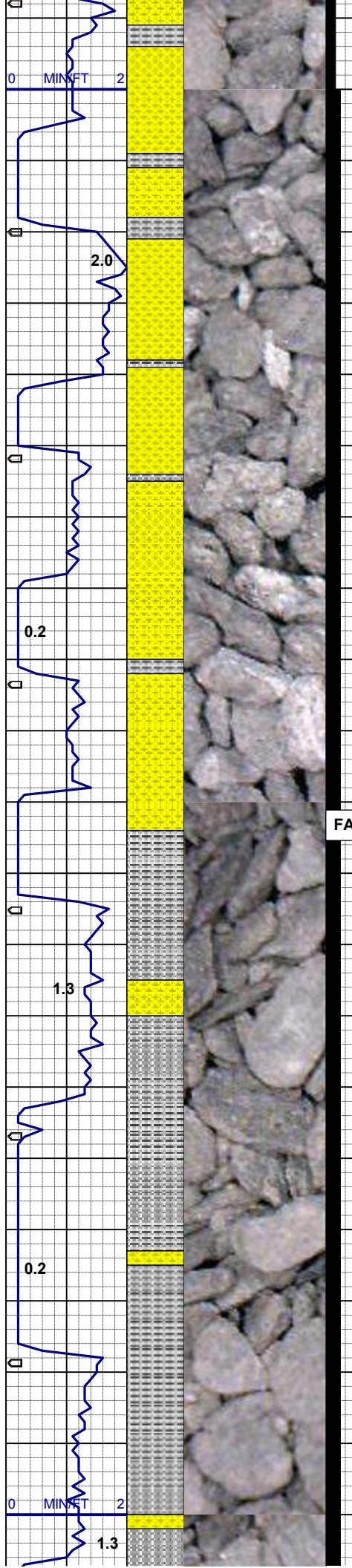
SHYSS: lt gybrn-gybrn, off. wh, vf-f gr, sbdr-sbang, mod srt, firm, brit-smwt fri, tt clus, slty-cly mtx, spec lt gn glauc thru, SLTYSH: lt gy-gybrn, firm, sbplty-sbblky, occ plty, gt-sbwxy tex, tr pyr, tr fos, mica frag thru, spec bri yel mnrl flr, fnt slow blwh mky cut

MD 5102'
TVD 5014.94'
INC 10.1°
AZM 258.5°
VS 2.14'

MD 5134'
TVD 5046.48'
INC 9.5°
AZM 258.3°
VS 2.56'

SHYSS: lt gybrn-gybrn, off. wh, vf-f gr, sbdr-sbang, mod srt, firm, brit-smwt fri, tt clus, slty-cly mtx, spec lt gn glauc thru, intlam w/ SLTYSH: lt gy-gybrn, dk gybrn, sme sd frag thru, firm, sbplty-sbblky, occ plty, gt-sbwxy tex, tr pyr, mica frag thru, rr bri yel mnrl flr, fnt slow blwh mky cut

MD 5166'
TVD 5078.04'
INC 9.5°
AZM 259.4°
VS 2.98'



MD 5197'
TVD 5108.57'
INC 10.4°
AZM 257.8°
VS 3.38'

MD 5229'
TVD 5140.01'
INC 11.0°
AZM 257.9°
VS 3.76'

SHYSS: lt gy-gy, gybrn, off. wh, vf-f gr, sbrd-sbang, p-mod srt, firm, brit-smwt fri, tt clus, slty-cly mtx, spec lt gn glauc thru, intlam w/ SLTYSH: lt gy-gybrn, dk gybrn, firm, sbply-sbblky, occ pty, gt-sbwxy tex, tr pyr, mica frag thru, rr bri yel mnrl flr, fnt slow sl stmg bl mky cut

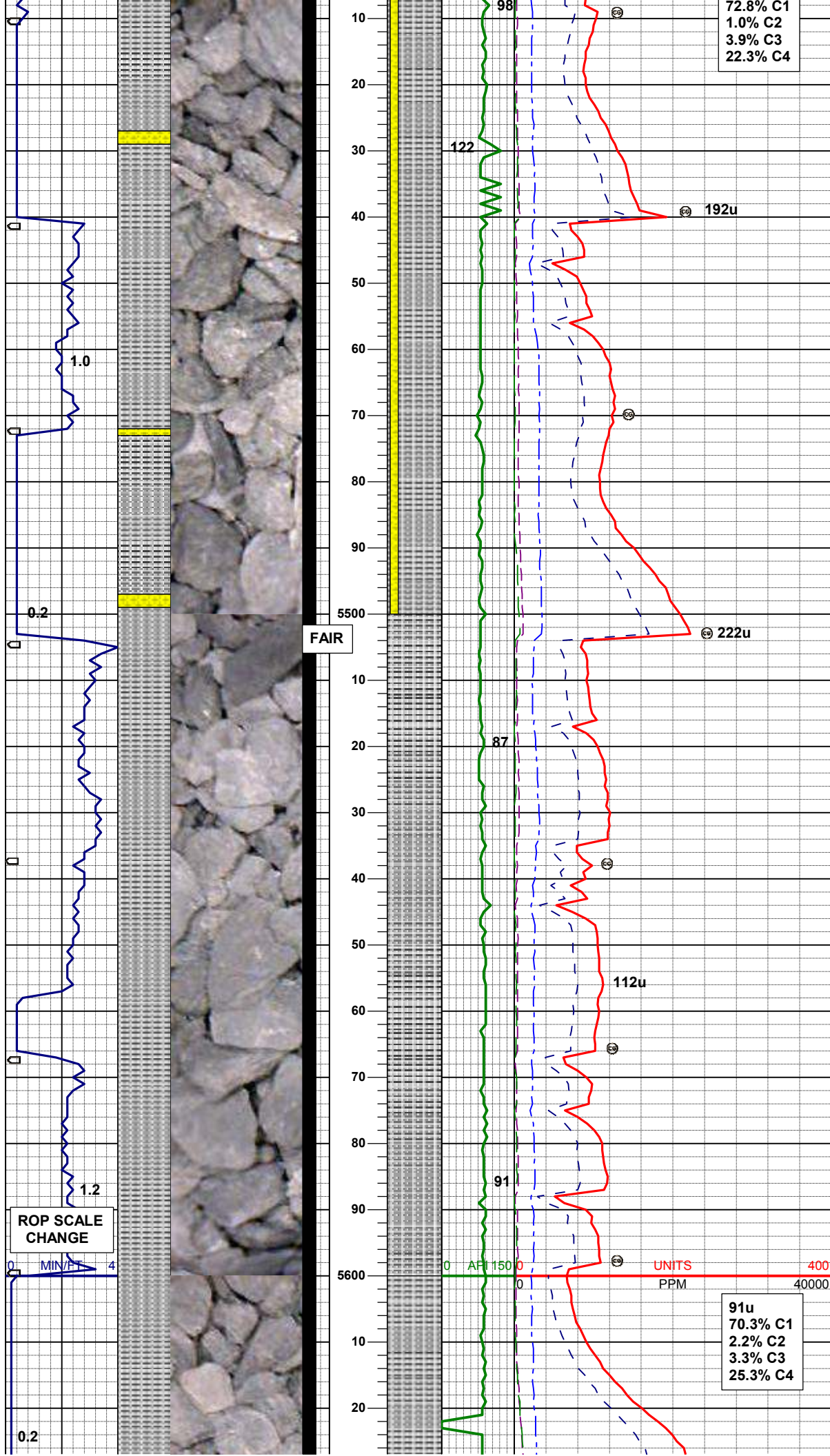
MD 5261'
TVD 5171.40'
INC 11.4°
AZM 256.5°
VS 4.07'

PROG SHANNON TOP @ 5193' TVD
LOGGER TOP @ 5183' TVD

MD 5324'
TVD 5233.05'
INC 12.4°
AZM 254.6°
VS 4.07'

SLTYSH: lt gy-m gy, firm, sbply-sbblky, occ pty, gt-sbwxy tex, SHYSS: lt gy-gy, gybrn, off. wh, vf-f gr, sbrd-sbang, p-mod srt, firm, brit-smwt fri, tt clus, slty-cly mtx, occ pyr, no flr, slow mod bri bl mky cut

MD 5388'
TVD 5295.62'
INC 11.9°
AZM 253.7°
VS 4.34'



MD	5864'
TVD	5761.87'
INC	11.6°
AZM	248.5°
VS	-2.77'

MD 5896'
TVD 5793.22'
INC 11.6°
AZM 251.6°
VS -3.24'

MD	5927'
TVD	5823.56'
INC	12.1°
AZM	253.8°
VS	-3.41'

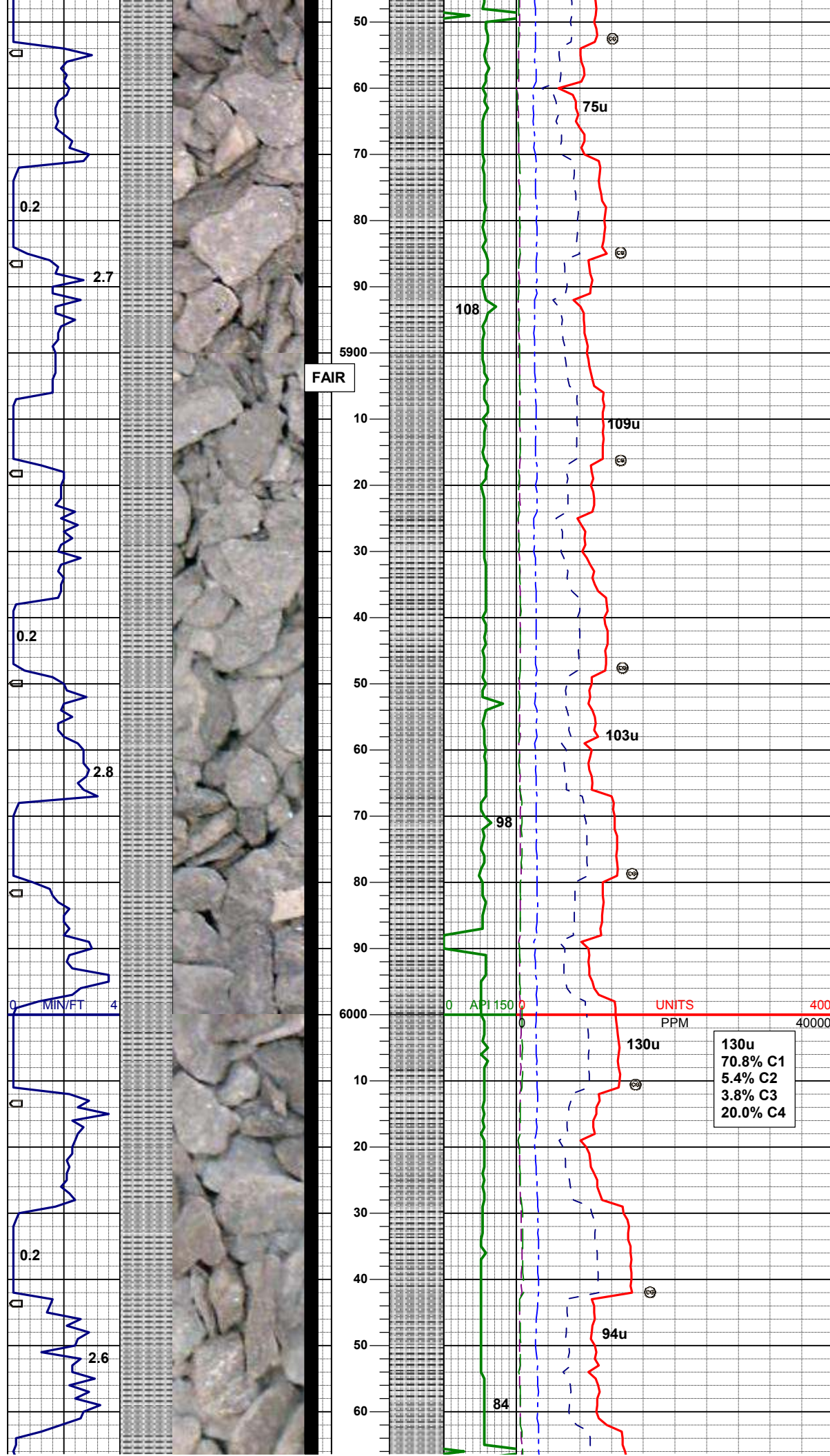
MD	5959'
TVD	5854.83
INC	12.4°
AZM	253.9°
VS	-3.45'

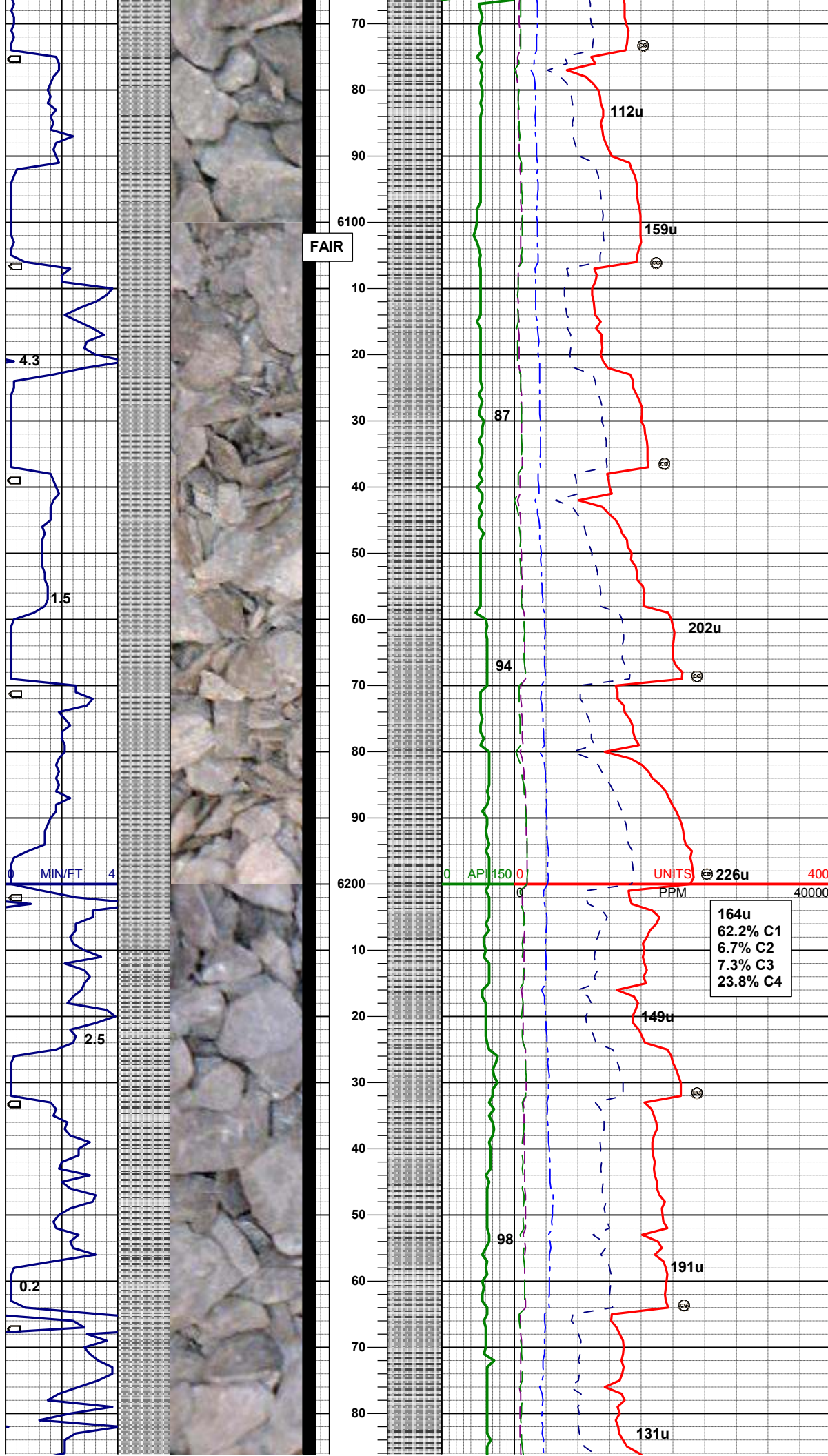
MD	5991'
TVD	5886.07
INC	12.6°
AZM	252.8°
VS	-3.56'

MD	6022'
TVD	5916.32
INC	12.7°
AZM	253.7°
VS	-3.68'

SLTYSH: It gy-dk gy, firm, pred
sbplty-plty-sbfis, occ sbblky,
sbwxy-smwt gt tex, hom thru, slty
-arg mtx, non calc, dism pyr thru,
tr fos frag, no flor, sl stmg mod
bri bl mkv cut

MD 6054'





TVD 5947.56'
INC 12.4°
AZM 254.2°
VS -3.72'

WT IN 10.1/10.0 OUT
VIS IN 42/43 OUT

MD 6086'
TVD 5978.80'
INC 12.5°
AZM 253.5°
VS -3.77'

MD 6118'
TVD 6010.06'
INC 12.3°
AZM 253.2°
VS -3.87'

WT IN 10.1/10.1 OUT
VIS IN 41/42 OUT

MD 6149'
TVD 6040.34'
INC 12.4°
AZM 253.3°
VS -3.99'

SLTYSH: pred lt gy, occ m gy-dk gy, firm, pred sbply-pty, sme fis, rr sbbly, sbwxy-smwt gt tex, hom thru, arg-smwt slty mtx, non calc, occ pyr thru, tr fos frag, no flr, sl stmng mod bri bl mky cut

MD 6181'
TVD 6071.58'
INC 12.7°
AZM 253.5°
VS -4.09'

WT IN 10.1/10.1 OUT
VIS IN 42/42 OUT

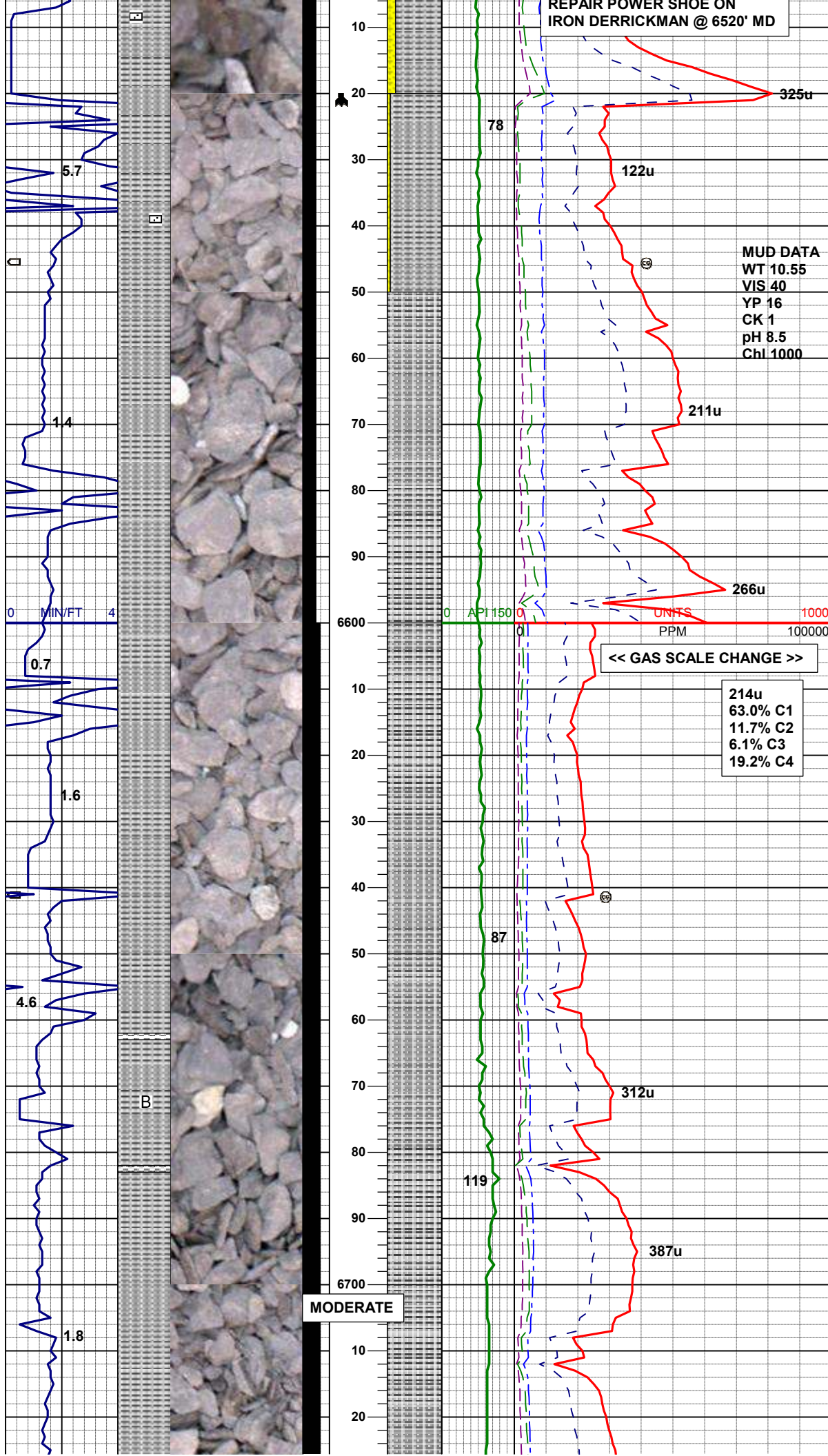
MD 6213'
TVD 6102.77'
INC 13.0°
AZM 254.0°
VS -4.15'

MD 6245'
TVD 6133.94'
INC 13.2°
AZM 255.0°
VS -4.12'

SLTYSH: pred lt gy, occ m-dk gy, sbply-pty, rr sbbly, firm, gt-sbwxy tex, arg-smwtslty mtx, occ pyr thru, non calc, no flr, sl stmng mod bri bl mky cut

WT IN 10.2/10.2 OUT
VIS IN 44/43 OUT

MD 6276'
TVD 6164.13'
INC 13.1°
AZM 255.4°
VS -4.01'



02/16/12; 11H w/ new motor and bit @ 2010hrs on 02/16/12

Began drilling curve @ 0454hrs on 02/17/12

COLLECTING 50' LAGGED SAMPLES

SLTYSH: It gy-gybrn, firm, pred sbplty, sme sbbiky, rthy-gt tex, arg-sltly mtz, intlam w/ SHYSS: It gy-gy, off. wh, vf gr, sbrd, w srt, v hd, brit-fri, slty-cly mtz, v sl calc, no flor, fast strng bri blwh mky cut

MD 6523'	MD 6555'
TVD 6404.67'	TVD 6435.71'
INC 13.5°	INC 14.8°
AZM 260.2°	AZM 274.3°
VS -2.07'	VS -0.28'

SLTYSH: It gy-gybrn, firm, sbplty-sbbiky, rthy-gt tex, arg-sltly mtz, intlam w/ tr shlyss, sl calc ip, rr fos frag, tr pyr, no flor, sl strng mod bri blwh mky cut

WT IN 10.7/10.7 OUT
VIS IN 42/43 OUT

MD 6587'
TVD 6466.55'
INC 16.1°
AZM 285.0°
VS 3.39'

SLTYSH: It gy-gybrn, firm, sbplty-sbbiky, rthy-gt tex, arg-sltly mtz, intlam w/ tr shlyss, non calc, rr fos frag, tr pyr, no flor, sl strng mod bri blwh mky cut

MD 6618'
TVD 6496.26'
INC 17.2°
AZM 296.1°
VS 8.65'

WT IN 10.6/10.7 OUT
VIS IN 42/43 OUT

MD 6650'
TVD 6526.67'
INC 19.1°
AZM 305.1°
VS 15.87'

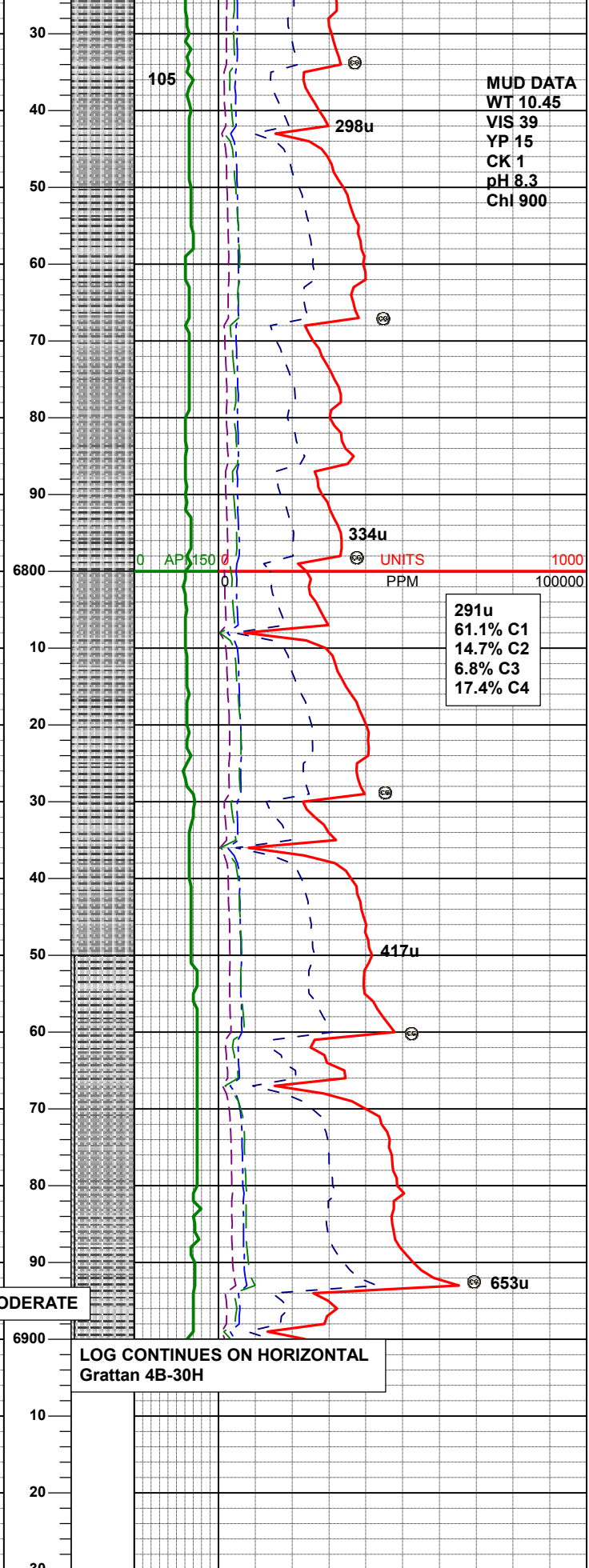
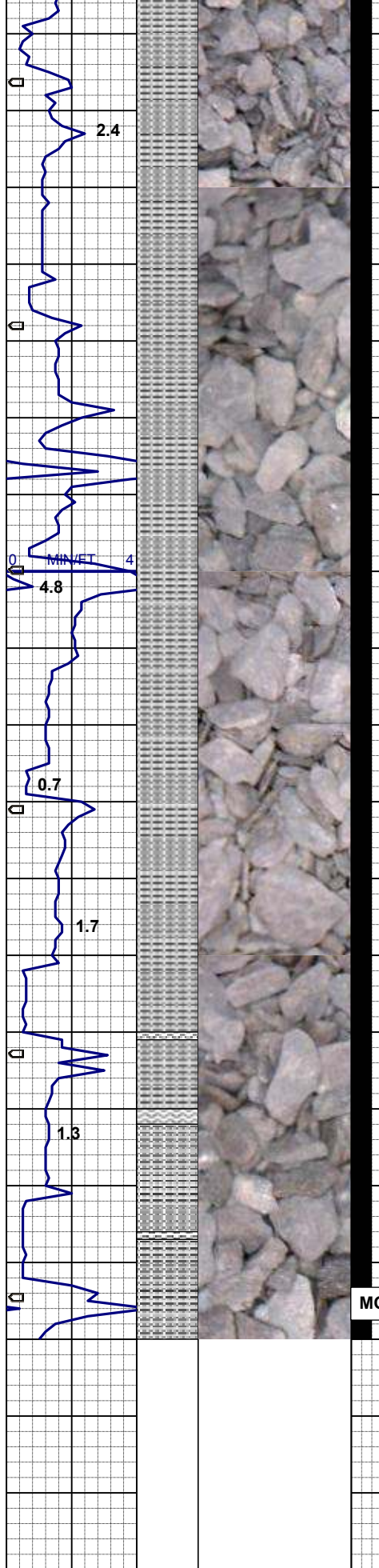
WT IN 10.5/10.5 OUT
VIS IN 40/43 OUT

SLTYSH: It gy-gybrn, blk strg ip, firm, sbplty-sbbiky, rthy-gt tex, smwt lam, arg-sltly mtz, intlam w/ tr shlyss, non calc, rr fos frag, occ bent w/ dism pyr, spec bri yel -gold mnrl flor, sl strng mod bri blwh mky cut

MD 6682'
TVD 6556.73'
INC 21.1°
AZM 313.1°
VS 24.86'

WT IN 10.4+/10.5 OUT
VIS IN 40/40 OUT

MD 6714'
TVD 6586.33'
INC 23.6°
AZM 319.5°
VS 35.61'



MUD DATA
WT 10.45
VIS 39
YP 15
CK 1
pH 8.3
Chl 900

MD 6745'
TVD 6614.48'
INC 25.9°
AZM 324.3°
VS 47.61'

WT IN 10.4+/10.4+ OUT
VIS IN 38/42 OUT

MD 6777'
TVD 6642.93'
INC 28.6°
AZM 329.1°
VS 61.58'

SLTYSH: pred lt gy, m gy, blk mica strg ip, firm, sbply-sbblky, sme pty-sbfis, rthy-gt tex, arg-slty mtz, v sl calc, sl stmg mod bri blwh mky cut

MD 6808'
TVD 6669.81'
INC 31.2°
AZM 334.5°
VS 76.66'

SLTYSH: pred lt gy, sme gy, firm, sbply-sbblky, rthy-gt tex, arg-slty mtz, v sl calc, sl stmg mod bri blwh mky cut

WT IN 10.4/10.4+ OUT
VIS IN 38/39 OUT

MD 6840'
TVD 6696.80'
INC 33.8°
AZM 338.9°
VS 93.70'

SLTYSH: pred lt gy, sme gy, firm, sbply-sbblky, rthy-gt tex, arg-slty mtz, v sl calc, occ bent w/ dism pyr, spec bri yel-gold mnrl flr, sl stmg mod bri blwh mky cut

MD 6872'
TVD 6723.04'
INC 36.0°
AZM 342.0°
VS 111.96'

WT IN 10.5/10.5 OUT
VIS IN 38/39 OUT

BEGIN COLLECTING 30'
LAGGED SAMPLES

LOG CONTINUES ON HORIZONTAL
Grattan 4B-30H