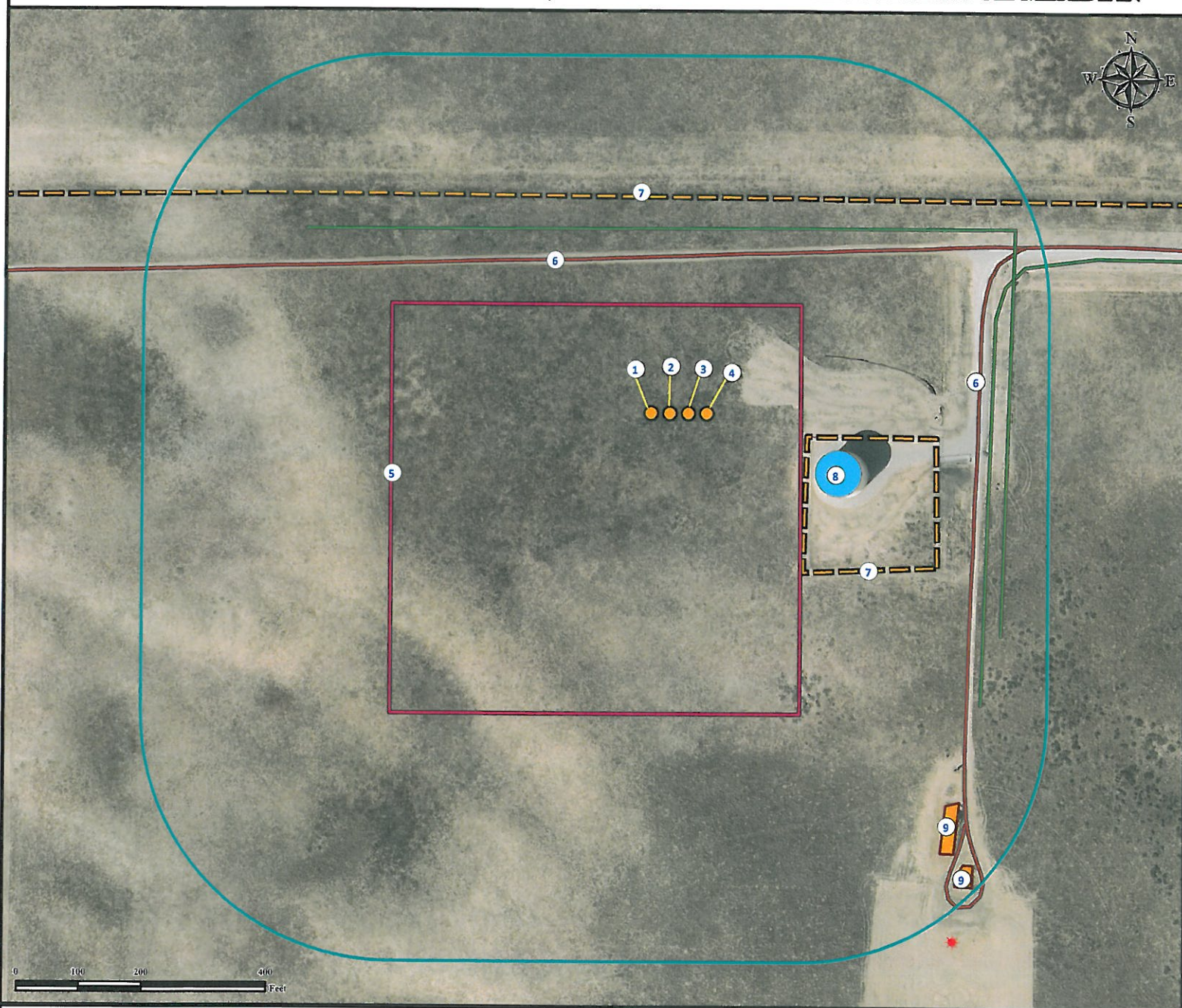


Location Drawing SPARBOE 7N-3HZ

Horizontal Multi Well Pad

NW¼ NE¼ SECTION 34, TOWNSHIP 2 NORTH, RANGE 65 WEST OF THE 6TH PRINCIPAL MERIDIAN



1. Proposed well SPARBOE 7C-3HZ.
2. Proposed well SPARBOE 7N-3HZ.
3. Proposed well SPARBOE 24N-3HZ.
4. Proposed well SPARBOE 24C-3HZ.

5. Operational Disturbance Area.
6. Private Roads are $\pm 253'$ N and $\pm 497'$ E.
7. Fences are $\pm 349'$ N and $\pm 225'$ SE.
8. Water Tank is $\pm 252'$ SE.

9. Existing Facilities are $\pm 772'$ SE and $\pm 867'$ SE.

Legend

- | | | |
|---------------|----------------------|----------------------|
| Proposed Well | Facilities Enclosure | Fence |
| Existing Well | Disturbance Area | Private Road |
| Water Tank | 400' Radius | Underground Pipeline |

Reference Location

** All Measurements are Made from
Reference Well SPARBOE 7N-3HZ **
Lat: 40.101501° Long: -104.645921° (NAD83)
Elevation: 4977 Feet
Surface Use: Rangeland



Use our resources to find yours!
www.petro-fs.com
(303) 928-7128

Field Date: 03/15/2012
Drafting Date: 06/25/2012
Drafter: DLR
Checked By: BHF

Data Sources:

- Aerial courtesy of ANADARKO
PETROLEUM CORPORATION

Prepared for:



KERR-MCGEE OIL & GAS ONSHORE LP