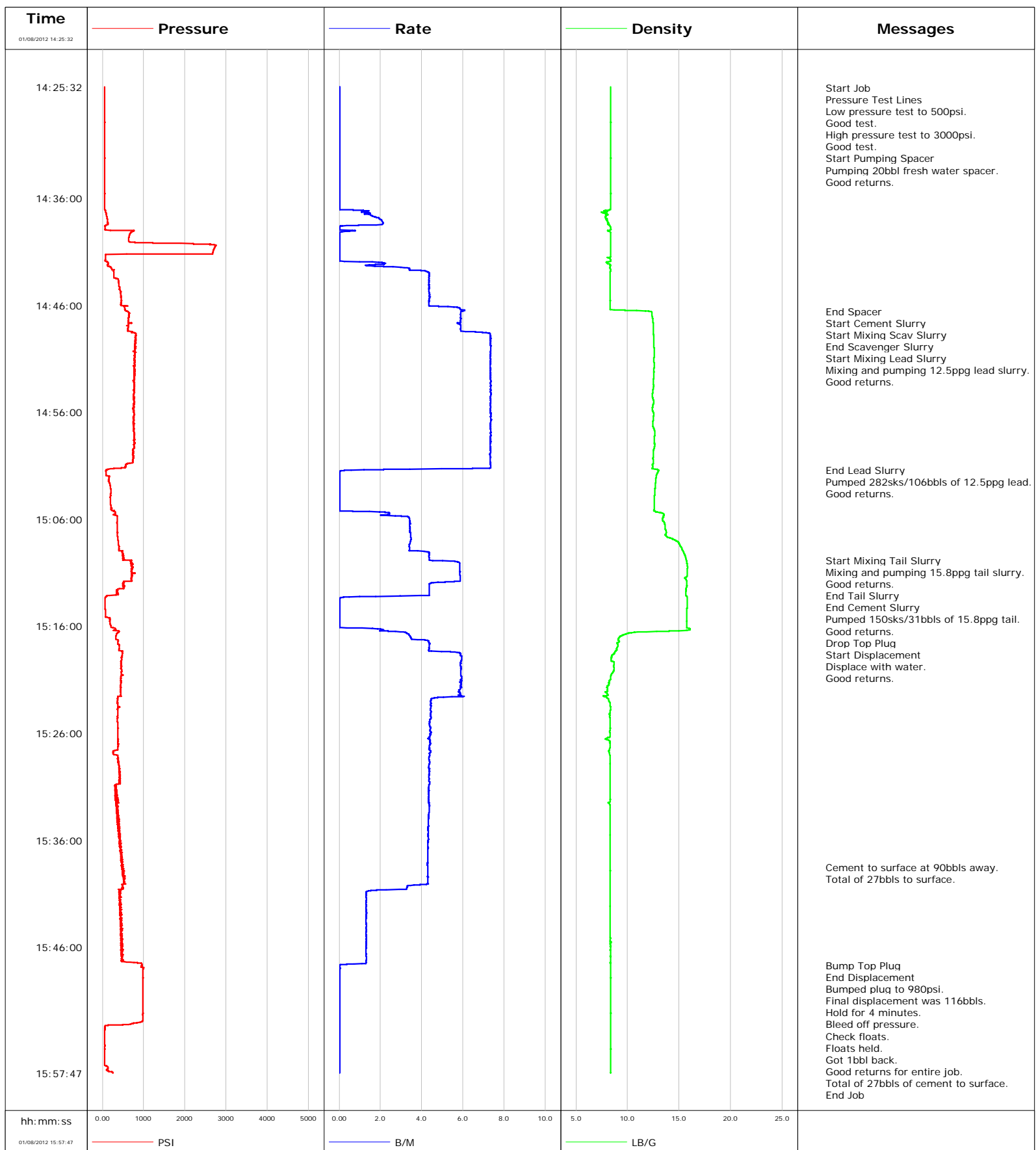


Well HMU 16-10A
Field ROSE RANCH
Engineer Jeff Patterson/ R Overstreet
Country United States

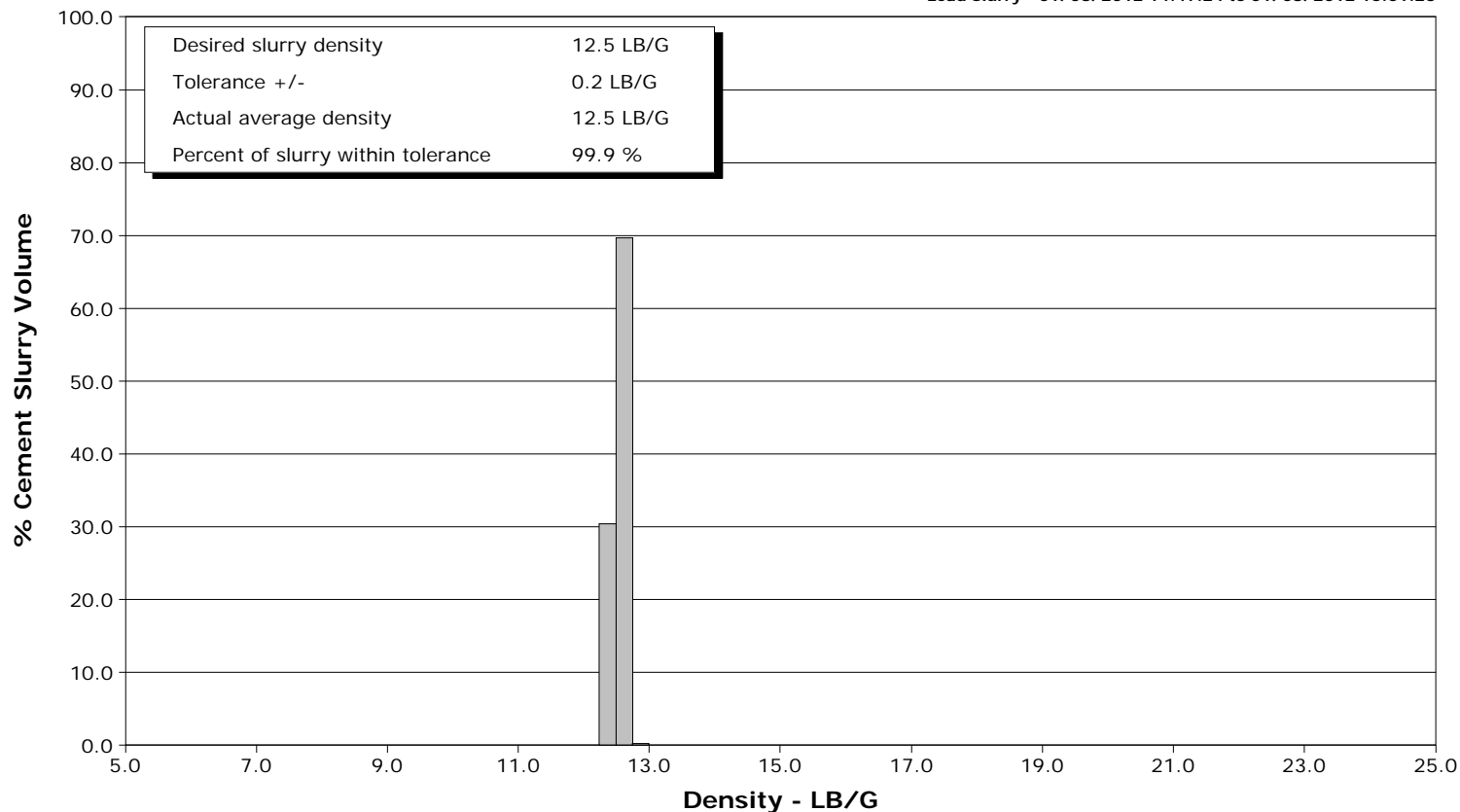
Client ENCANA
SIR No. BQMF-00535
Job Type 9 5/8" SURFACE
Job Date 01-08-2012



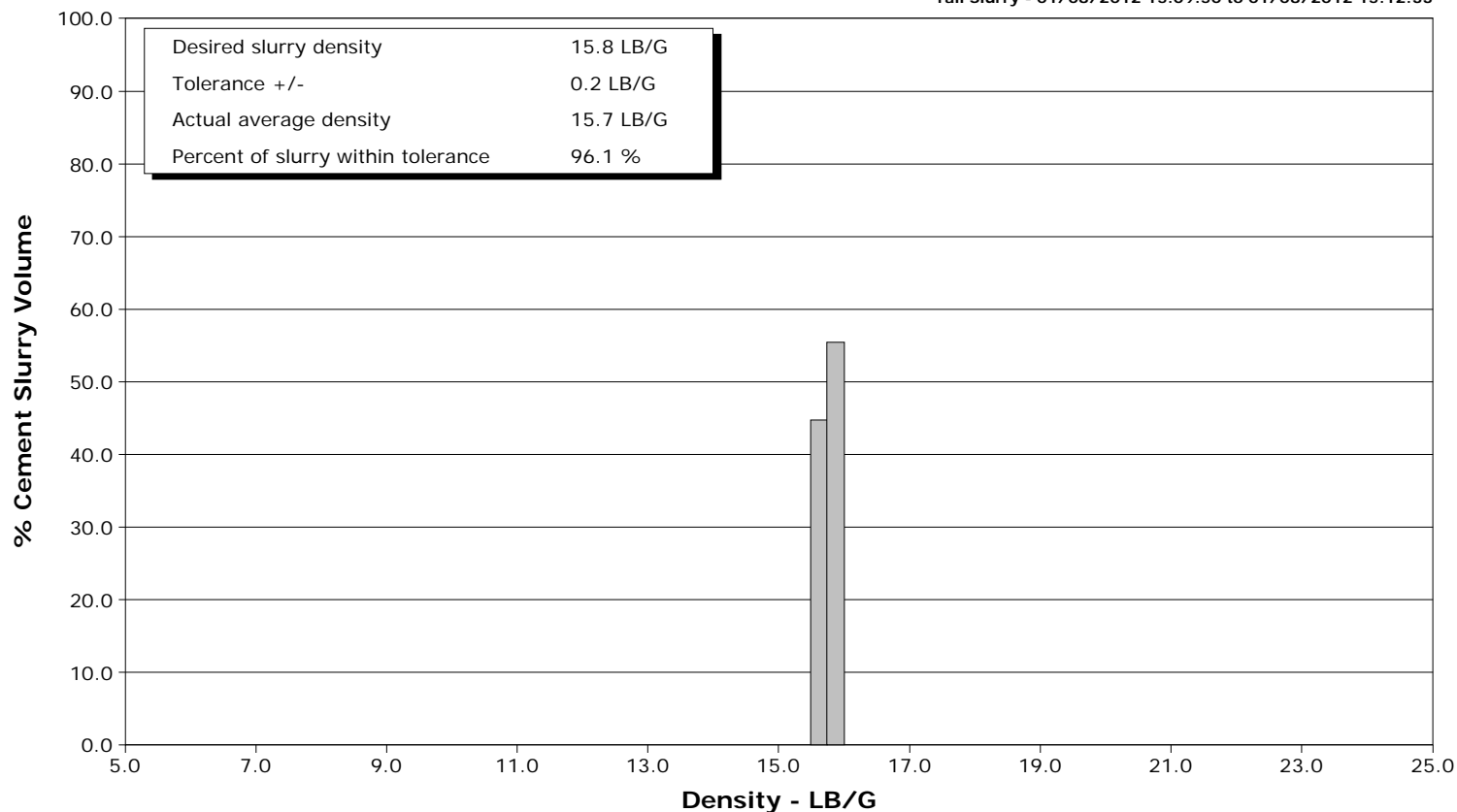
Well HMU 16-10A
Field ROSE RANCH
Engineer Jeff Patterson/ R Overstreet
Country United States

Client ENCANA
SIR No. BQMF-00535
Job Type 9 5/8" SURFACE
Job Date 01-08-2012

Lead Slurry - 01/08/2012 14:47:24 to 01/08/2012 15:01:23



Tail Slurry - 01/08/2012 15:09:50 to 01/08/2012 15:12:33





Cementing Service Report

				Customer ENCANA		Job Number BQMF-00535	
Well HMU 16-10A HMU 16-10A			Location (legal) J16W		Schlumberger Location Grand Junction, Colorado		Job Start Jan/08/2012
Field ROSE RANCH		Formation Name/Type SHALE		Deviation 0 deg	Bit Size 12.3 in	Well MD 1564.0 ft	Well TVD 1564.0 ft
County GARFIELD		State/Province Colorado		BHP	BHST 100 degF	BHCT 86 degF	Pore Press. Gradient
Well Master 0631254660		API/UWI					
Rig Name NABORS M-11		Drilled For Gas	Service Via Land	Casing/Liner			
				Depth, ft	Size, in	Weight, lb/ft	Grade
							Thread
Offshore Zone		Well Class New	Well Type Development	1564.0	9.630	36.0	J55
				0.0	0.000	0.0	8RD
Drilling Fluid Type		Max. Density	Plastic Viscosity	Tubing/Drill Pipe			
				Depth,	Size,	Weight,	Grade
							Thread
Service Line Cementing		Job Type 9 5/8" SURFACE					
Max. Allowed Tub. Press 3000 psi		Max. Allowed Ann. Press	WH Connection 9 5/8" CEMENT HEAD	Perforations/Open Hole			
				Top,	Bottom,	No. of Shots	Total Interval
							Diameter
				Treat Down Casing	Displacement 117.3 bbl	Packer Type	Packer Depth
				Tubing Vol.	Casing Vol. 120.9 bbl	Annular Vol. 90.0 bbl	Openhole Vol. 215.0 bbl
Casing/Tubing Secured <input checked="" type="checkbox"/>		1 Hole Vol. Circulated prior to Cement <input checked="" type="checkbox"/>		Casing Tools		Squeeze Job	
Lift Pressure 774 psi				Shoe Type Guide		Squeeze Type	
Pipe Rotated <input type="checkbox"/>		Pipe Reciprocated <input type="checkbox"/>		Shoe Depth 1564.0 ft		Tool Type	
No. Centralizers		Top Plugs 1	Bottom Plugs	Stage Tool Type		Tool Depth	
Cement Head Type Single				Stage Tool Depth		Tail Pipe Size	
Job Scheduled For Jan/08/2012		Arrived on Location Jan/08/2012	Leave Location Jan/08/2012	Collar Type Float		Tail Pipe Depth	
				Collar Depth 1517.0 ft		Sqz. Total Vol.	
Date	Time 24-hr clock	Treating Pressure PSI	Flow Rate B/M	Density LB/G	Volume BBL	Message	
01/08/2012	13:59:12					Started Acquisition	
01/08/2012	14:25:32	54	0.0	8.35	0.0		
01/08/2012	14:25:36					Start Job	
01/08/2012	14:25:36	54	0.0	8.35	0.0		
01/08/2012	14:25:38					Pressure Test Lines	
01/08/2012	14:25:38	54	0.0	8.35	0.0		
01/08/2012	14:25:39					Low pressure test to 500psi.	
01/08/2012	14:25:39	54	0.0	8.35	0.0		
01/08/2012	14:25:40					Good test.	
01/08/2012	14:25:40					High pressure test to 3000psi.	
01/08/2012	14:25:40					Good test.	
01/08/2012	14:25:40	54	0.0	8.35	0.0		
01/08/2012	14:25:41					Start Pumping Spacer	
01/08/2012	14:25:41	54	0.0	8.35	0.0		
01/08/2012	14:25:43					Pumping 20bbl fresh water spacer.	
01/08/2012	14:25:43					Good returns.	
01/08/2012	14:25:43	54	0.0	8.34	0.0		
01/08/2012	14:25:52	54	0.0	8.34	0.0		
01/08/2012	14:27:32	54	0.0	8.35	0.0		
01/08/2012	14:29:12	54	0.0	8.34	0.0		
01/08/2012	14:30:52	54	0.0	8.34	0.0		

Well			Field	Job Start	Customer	Job Number
HMU 16-10A HMU 16-10A			ROSE RANCH	Jan/08/2012	ENCANA	BQMF-00535
Date	Time 24-hr clock	Treating Pressure PSI	Flow Rate B/M	Density LB/G	Volume BBL	Message
01/08/2012	14:34:12	54	0.0	8.35	0.0	
01/08/2012	14:35:52	54	0.0	8.34	0.0	
01/08/2012	14:37:32	101	1.5	8.00	0.6	
01/08/2012	14:39:12	687	0.0	8.34	2.6	
01/08/2012	14:40:52	2693	0.0	8.35	2.6	
01/08/2012	14:42:32	225	3.4	8.32	4.0	
01/08/2012	14:44:12	401	4.4	8.33	11.0	
01/08/2012	14:45:52	454	4.4	8.32	18.3	
01/08/2012	14:46:30					End Spacer
01/08/2012	14:46:30	567	6.0	11.74	21.7	
01/08/2012	14:46:31					Start Cement Slurry
01/08/2012	14:46:31	567	6.0	11.74	21.8	
01/08/2012	14:46:32					Start Mixing Scav Slurry
01/08/2012	14:46:32	601	5.9	12.09	21.9	
01/08/2012	14:47:23					End Scavenger Slurry
01/08/2012	14:47:23	626	5.9	12.45	26.9	
01/08/2012	14:47:24					Start Mixing Lead Slurry
01/08/2012	14:47:24	626	5.9	12.45	27.0	
01/08/2012	14:47:27					Mixing and pumping 12.5ppg lead slurry.
01/08/2012	14:47:27					Good returns.
01/08/2012	14:47:27	632	5.9	12.46	27.3	
01/08/2012	14:47:32	624	5.9	12.47	27.8	
01/08/2012	14:49:12	803	7.3	12.57	38.6	
01/08/2012	14:50:52	774	7.3	12.57	50.8	
01/08/2012	14:52:32	787	7.3	12.56	63.0	
01/08/2012	14:54:12	767	7.4	12.43	75.3	
01/08/2012	14:55:52	771	7.3	12.44	87.5	
01/08/2012	14:57:32	760	7.3	12.57	99.7	
01/08/2012	14:59:12	782	7.4	12.62	112.0	
01/08/2012	15:00:52	564	7.3	12.42	124.2	
01/08/2012	15:01:23					End Lead Slurry
01/08/2012	15:01:23	92	1.2	12.96	127.4	
01/08/2012	15:01:29					Pumped 282sks/106bbls of 12.5ppg lead.
01/08/2012	15:01:29					Good returns.
01/08/2012	15:01:29	83	0.0	12.99	127.4	
01/08/2012	15:02:32	166	0.0	12.72	127.4	
01/08/2012	15:04:12	195	0.0	12.60	127.4	
01/08/2012	15:05:52	366	3.4	13.41	129.0	
01/08/2012	15:07:32	367	3.5	13.75	134.7	
01/08/2012	15:09:12	501	4.4	15.48	140.7	
01/08/2012	15:09:50					Start Mixing Tail Slurry
01/08/2012	15:09:50	706	4.4	15.70	143.4	
01/08/2012	15:09:52					Mixing and pumping 15.8ppg tail slurry.
01/08/2012	15:09:52					Good returns.
01/08/2012	15:09:52	678	4.5	15.71	143.6	
01/08/2012	15:10:52	698	5.9	15.77	149.4	
01/08/2012	15:12:32	372	4.4	15.65	158.2	
01/08/2012	15:12:33					End Tail Slurry
01/08/2012	15:12:33	374	4.4	15.66	158.2	
01/08/2012	15:12:34					End Cement Slurry
01/08/2012	15:12:34	374	4.4	15.66	158.3	
01/08/2012	15:12:35					Pumped 150sks/31bbls of 15.8ppg tail.
01/08/2012	15:12:35					Good returns.
01/08/2012	15:12:35	360	4.4	15.67	158.4	

Well			Field	Job Start		Customer	Job Number
HMU 16-10A HMU 16-10A			ROSE RANCH	Jan/08/2012		ENCANA	BQMF-00535
Date	Time 24-hr clock	Treating Pressure PSI	Flow Rate B/M	Density LB/G	Volume BBL	Message	
01/08/2012	15:12:38					Start Displacement	
01/08/2012	15:12:38	337	4.4	15.68	158.6		
01/08/2012	15:12:40					Displace with water.	
01/08/2012	15:12:40					Good returns.	
01/08/2012	15:12:40	377	4.4	15.68	158.7		
01/08/2012	15:14:12	68	0.0	15.77	161.1		
01/08/2012	15:15:52	199	0.0	15.74	161.1		
01/08/2012	15:17:32	378	4.4	9.05	165.5		
01/08/2012	15:19:12	460	5.9	8.42	174.0		
01/08/2012	15:20:52	454	5.9	8.38	183.9		
01/08/2012	15:22:32	454	5.9	7.66	193.6		
01/08/2012	15:24:12	377	4.4	8.20	201.2		
01/08/2012	15:25:52	377	4.4	8.25	208.6		
01/08/2012	15:27:32	375	4.4	8.24	215.9		
01/08/2012	15:29:12	410	4.3	8.33	223.2		
01/08/2012	15:30:52	339	4.4	8.33	230.4		
01/08/2012	15:32:32	385	4.4	8.14	237.7		
01/08/2012	15:34:12	375	4.3	8.33	244.9		
01/08/2012	15:35:52	409	4.3	8.33	252.1		
01/08/2012	15:37:32	444	4.3	8.33	259.3		
01/08/2012	15:38:33					Cement to surface at 90bbbls away.	
01/08/2012	15:38:33					Total of 27bbbls to surface.	
01/08/2012	15:38:33	480	4.3	8.33	263.6		
01/08/2012	15:39:12	504	4.3	8.33	266.4		
01/08/2012	15:40:52	404	1.3	8.33	272.5		
01/08/2012	15:42:32	417	1.3	8.33	274.7		
01/08/2012	15:44:12	442	1.3	8.33	276.9		
01/08/2012	15:45:52	453	1.3	8.33	279.1		
01/08/2012	15:47:32	946	1.3	8.33	281.3		
01/08/2012	15:47:41					Bump Top Plug	
01/08/2012	15:47:41	962	0.1	8.34	281.4		
01/08/2012	15:47:42					End Displacement	
01/08/2012	15:47:42	954	0.0	8.34	281.4		
01/08/2012	15:47:44					Bumped plug to 980psi.	
01/08/2012	15:47:44	952	0.0	8.34	281.4		
01/08/2012	15:47:45					Final displacement was 116bbbls.	
01/08/2012	15:47:45					Hold for 4 minutes.	
01/08/2012	15:47:45					Bleed off pressure.	
01/08/2012	15:47:45	952	0.0	8.34	281.4		
01/08/2012	15:47:46					Check floats.	
01/08/2012	15:47:46					Floats held.	
01/08/2012	15:47:46					Got 1bbl back.	
01/08/2012	15:47:46	954	0.0	8.34	281.4		
01/08/2012	15:47:47					Good returns for entire job.	
01/08/2012	15:47:47					Total of 27bbbls of cement to surface.	
01/08/2012	15:47:47	954	0.0	8.34	281.4		
01/08/2012	15:49:12	981	0.0	8.34	281.4		
01/08/2012	15:50:52	980	0.0	8.34	281.4		
01/08/2012	15:52:32	977	0.0	8.34	281.4		
01/08/2012	15:54:12	59	0.0	8.34	281.4		
01/08/2012	15:55:52	57	0.0	8.34	281.4		
01/08/2012	15:57:32	114	0.0	8.34	281.4		
01/08/2012	15:57:44					End Job	
01/08/2012	15:57:44	255	0.0	8.35	281.4		

Well HMU 16-10A HMU 16-10A	Field ROSE RANCH	Job Start Jan/08/2012	Customer ENCANA	Job Number BQMF-00535
-------------------------------	---------------------	--------------------------	--------------------	--------------------------

Post Job Summary

Average Pump Rates, bbl/min					Volume of Fluid Injected, bbl			
Slurry 6.5	N2	Mud	Maximum Rate 8.0	Total Slurry 137.0	Mud	Spacer 20.0	N2	
Treating Pressure Summary, psi					Breakdown Fluid			
Maximum 3000	Final 980	Average 300	Bump Plug to 980	Breakdown	Type	Volume	Density	
Avg. N2 Percent	Designed Slurry Volume 237.0 bbl	Displacement 117.0 bbl	Mix Water Temp 78 degF	Cement Circulated to Surface? <input checked="" type="checkbox"/>	Volume 27.0 bbl			
				Washed Thru Perfs <input type="checkbox"/>	To			
Customer or Authorized Representative MARCO SYLVA		Schlumberger Supervisor Jeff Patterson			Circulation Lost <input type="checkbox"/>	Job Completed <input checked="" type="checkbox"/>		
				-		-		