

Cementing Job Summary

The Road to Excellence Starts with Safety

Sold To #: 304535	Ship To #: 2928864	Quote #:	Sales Order #: 9535698
Customer: PDC ENERGY EBUS	Customer Rep: SAILORS, CHAD		
Well Name: Webster	Well #: 42-11	API/UWI #: 05-123-21390	
Field: WARRENERG	City (SAP): GREELEY	County/Parish: Weld	State: Colorado
Job Purpose: Recement Service			
Well Type: Development Well	Job Type: Recement Service		
Sales Person: AARON, WESLEY	Srvc Supervisor: FANTASIA, JOSEPH	MBU ID Emp #:	485445

Job Personnel

HES Emp Name	Exp Hrs	Emp #	HES Emp Name	Exp Hrs	Emp #	HES Emp Name	Exp Hrs	Emp #
BULINSKI, MATTHEW J	3.0	483865	CARPENTER, JACOB P	3.0	499500	FANTASIA, JOSEPH Brandon	3.0	485445
ROMERO, JOSEPH M	3.0	512137						

Equipment

HES Unit #	Distance-1 way	HES Unit #	Distance-1 way	HES Unit #	Distance-1 way	HES Unit #	Distance-1 way
10248053C	50 mile	11142998	50 mile	11542778	50 mile	11748359	50 mile
NA	50 mile						

Job Hours

Date	On Location Hours	Operating Hours	Date	On Location Hours	Operating Hours	Date	On Location Hours	Operating Hours
5-23-2012	3	3						
TOTAL								

Total is the sum of each column separately

Job

Formation Name	Formation Depth (MD)	Top	Bottom	Form Type	Job depth MD	Job Depth TVD	Water Depth	Perforation Depth (MD)	From	To
				BHST	3150. ft	3150. ft				
							Wk Ht Above Floor			

Job Times

Date	Time	Time Zone
Called Out	23 - May - 2012	02:00
On Location	23 - May - 2012	10:30
Job Started	23 - May - 2012	11:09
Job Completed	23 - May - 2012	12:55
Departed Loc	23 - May - 2012	13:30

Well Data

Description	New / Used	Max pressure psig	Size in	ID in	Weight lbm/ft	Thread	Grade	Top MD ft	Bottom MD ft	Top TVD ft	Bottom TVD ft
Open Hole Section				8.				.	3150.	.	3150.
Production Casing	Used		4.5	4.	11.6		P-110	.	7336.	.	7336.
Surface Casing	Used		8.625	8.097	24.		J-55	.	451.	.	451.

Tools and Accessories

Type	Size	Qty	Make	Depth	Type	Size	Qty	Make	Depth	Type	Size	Qty	Make
Guide Shoe					Packer					Top Plug			
Float Shoe					Bridge Plug					Bottom Plug			
Float Collar					Retainer					SSR plug set			
Insert Float										Plug Container			
Stage Tool										Centralizers			

Miscellaneous Materials

Gelling Agt	Conc	Surfactant	Conc	Acid Type	Qty	Conc	%
Treatment Fld	Conc	Inhibitor	Conc	Sand Type	Size	Qty	

Fluid Data

Stage/Plug #: 1	Fluid #	Stage Type	Fluid Name	Qty	Qty uom	Mixing Density lbm/gal	Yield ft3/sk	Mix Fluid Gal/sk	Rate bbl/min	Total Mix Fluid Gal/sk
-----------------	---------	------------	------------	-----	---------	------------------------	--------------	------------------	--------------	------------------------

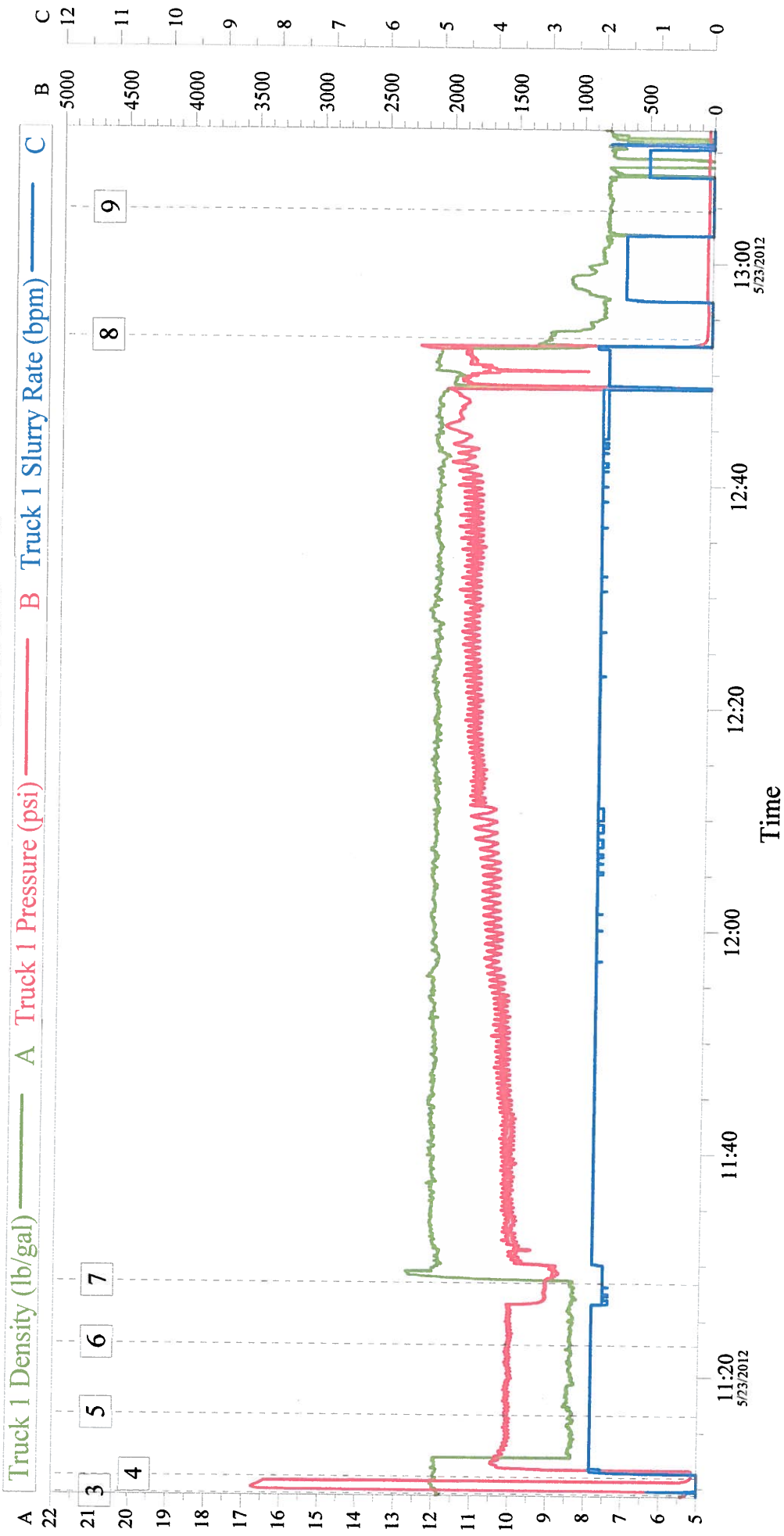
Stage/Plug #: 1									
Fluid #	Stage Type	Fluid Name	Qty	Qty uom	Mixing Density lbm/gal	Yield ft ³ /sk	Mix Fluid Gal/sk	Rate bbl/min	Total Mix Fluid Gal/sk
1	ClayWeb Water Spacer		10.00	bbl	8.33	.0	.0	2.0	
2	MUD FLUSH III	MUD FLUSH III - SBM (528788)	12.00	bbl	8.4	.0	.0	2.0	
3	ClayWeb Water Spacer		10.00	bbl	8.33	.0	.0	2.0	
59.525 gal/Mgal		CLA-WEB - TOTE (101985045)							
4	Varicem 12#	VARICEM (TM) CEMENT (452009)	465.0	sacks	12.	2.18	12.34	2.0	12.34
12.34 Gal		FRESH WATER							
Calculated Values		Pressures		Volumes					
Displacement		Shut In: Instant		Lost Returns	0	Cement Slurry	165	Pad	
Top Of Cement		5 Min		Cement Returns	10	Actual Displacement	1.5	Treatment	
Frac Gradient		15 Min		Spacers	32	Load and Breakdown		Total Job	198.5
Rates									
Circulating	2	Mixing	2	Displacement	2	Avg. Job	2		
Cement Left In Pipe	Amount	0 ft	Reason	Shoe Joint					
Frac Ring # 1 @	ID	Frac ring # 2 @	ID	Frac Ring # 3 @	ID	Frac Ring # 4 @	ID		
The Information Stated Herein Is Correct				Customer Representative Signature					

The Road to Excellence Starts with Safety

Sold To #: 304535		Ship To #: 2928864		Quote #:		Sales Order #: 9535698	
Customer: PDC ENERGY EBUS				Customer Rep: SAILORS, CHAD			
Well Name: Webster			Well #: 42-11		API/UWI #: 05-123-21390		
Field: WARRENERG		City (SAP): GREELEY		County/Parish: Weld		State: Colorado	
Legal Description:							
Lat: N 0 deg. OR N 0 deg. 0 min. 0 secs.				Long: E 0 deg. OR E 0 deg. 0 min. 0 secs.			
Contractor:			Rig/Platform Name/Num:				
Job Purpose: Recement Service					Ticket Amount:		
Well Type: Development Well			Job Type: Recement Service				
Sales Person: AARON, WESLEY			Srvc Supervisor: FANTASIA, JOSEPH			MBU ID Emp #: 485445	

Activity Description	Date/Time	Cht #	Rate bbl/ min	Volume bbl		Pressure psig		Comments
				Stage	Total	Tubing	Casing	
Arrive at Location from Service Center	05/23/2012 10:30							
Assessment Of Location Safety Meeting	05/23/2012 10:45							
Start Job	05/23/2012 11:08							
Test Lines	05/23/2012 11:09							PRESSURE TEST LINES TO 3500 PSI
Pump Water Spacer	05/23/2012 11:10		2	10			1645.0	10 BBLS WATER WITH CLAYWEB ADDED
Pump Mudflush	05/23/2012 11:16		2	12			1650.0	12 BBLS MUDFLUSH
Pump Water Spacer	05/23/2012 11:22		2	10			1710.0	10 BBLS WATER WITH CLAYWEB ADDED
Pump Cement	05/23/2012 11:28		2	90			1880.0	427 SKS VARICEM MIXED AT 12 PPG USING RIG WATER. CEMENT TO SURFACE AT 154 BBLS OF A TOTAL 164 BBLS. APPROX 10 BBLS CEMENT TO SURFACE
Pump Displacement	05/23/2012 12:53		2	1.5			1990.0	DISPLACE 1.5 BBLS BEHIND. AND DISPOSE 37 SKS. CEMENT NOT USED.
End Job	05/23/2012 12:56							

PDC WEBSTER 42-11 RECEMENT



Global Event Log

1	Starting Job	10:53:24	2	Start Job	11:09:16	3	Test Lines	11:09:26
4	Pump Spacer 1	11:10:57	5	Pump Spacer 2	11:16:30	6	Pump Spacer 1	11:22:48
7	Pump Cement	11:28:21	8	Pump Displacement	12:53:14	9	End Job	13:04:42
10	Ending Job	13:13:02						