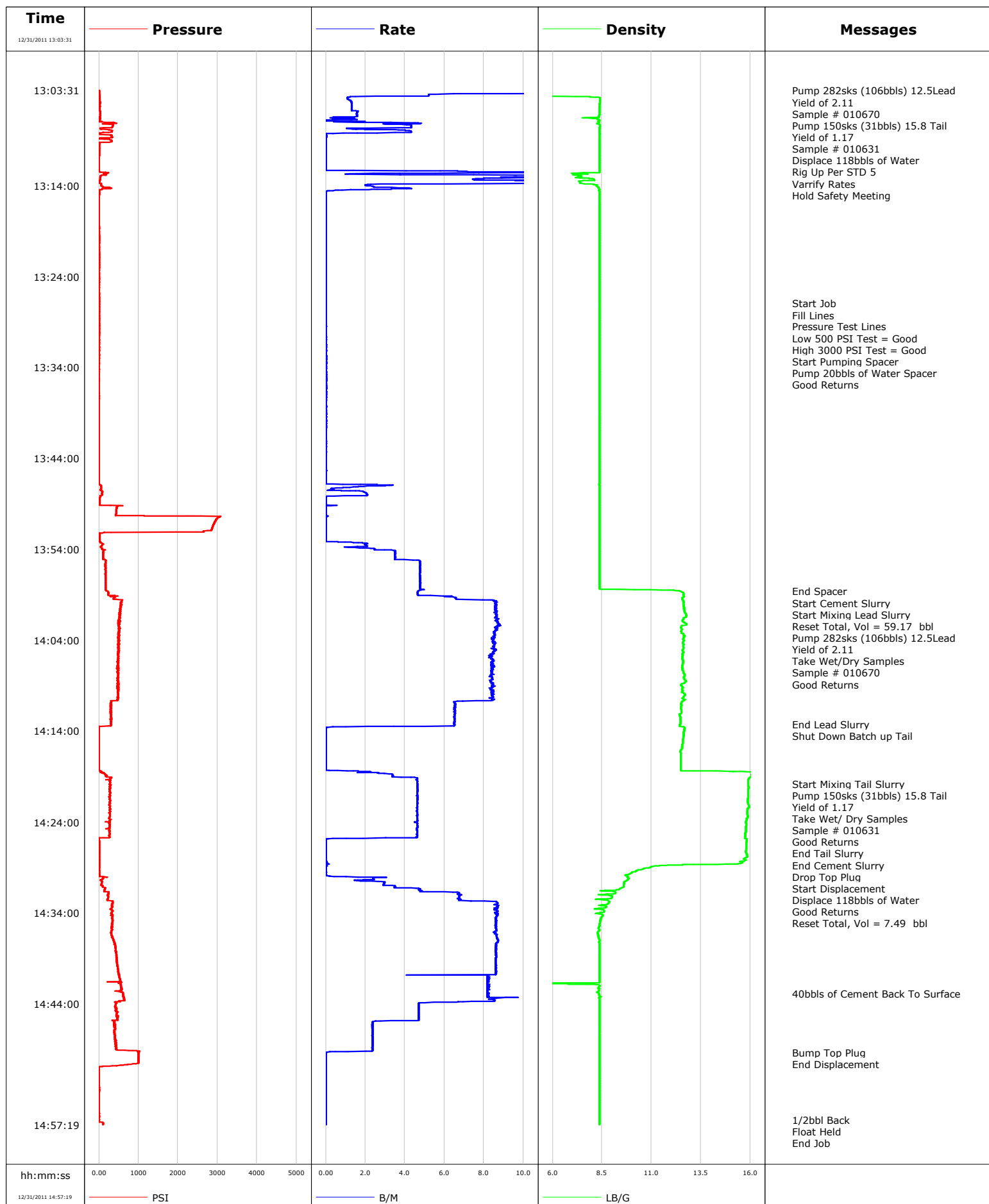
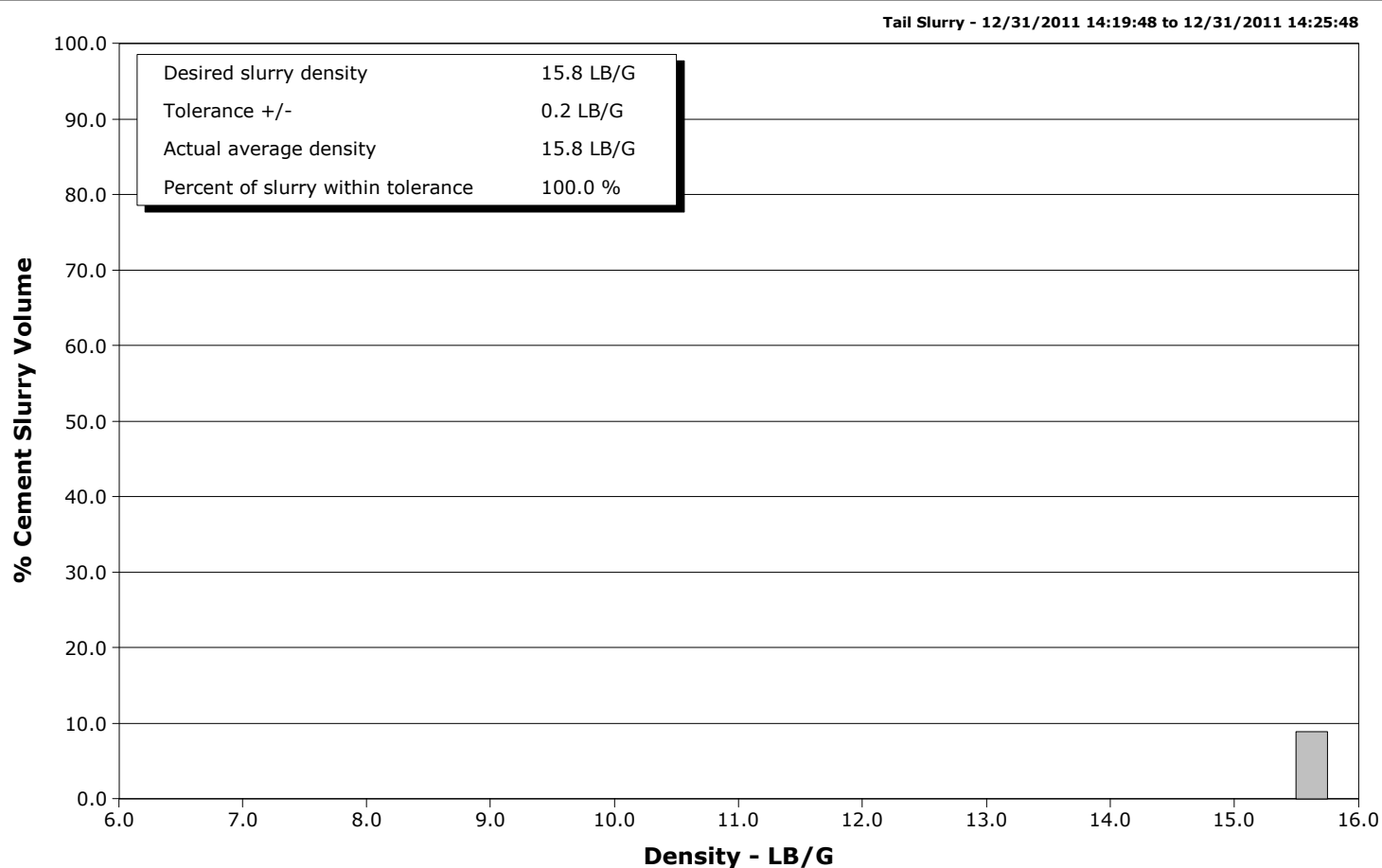
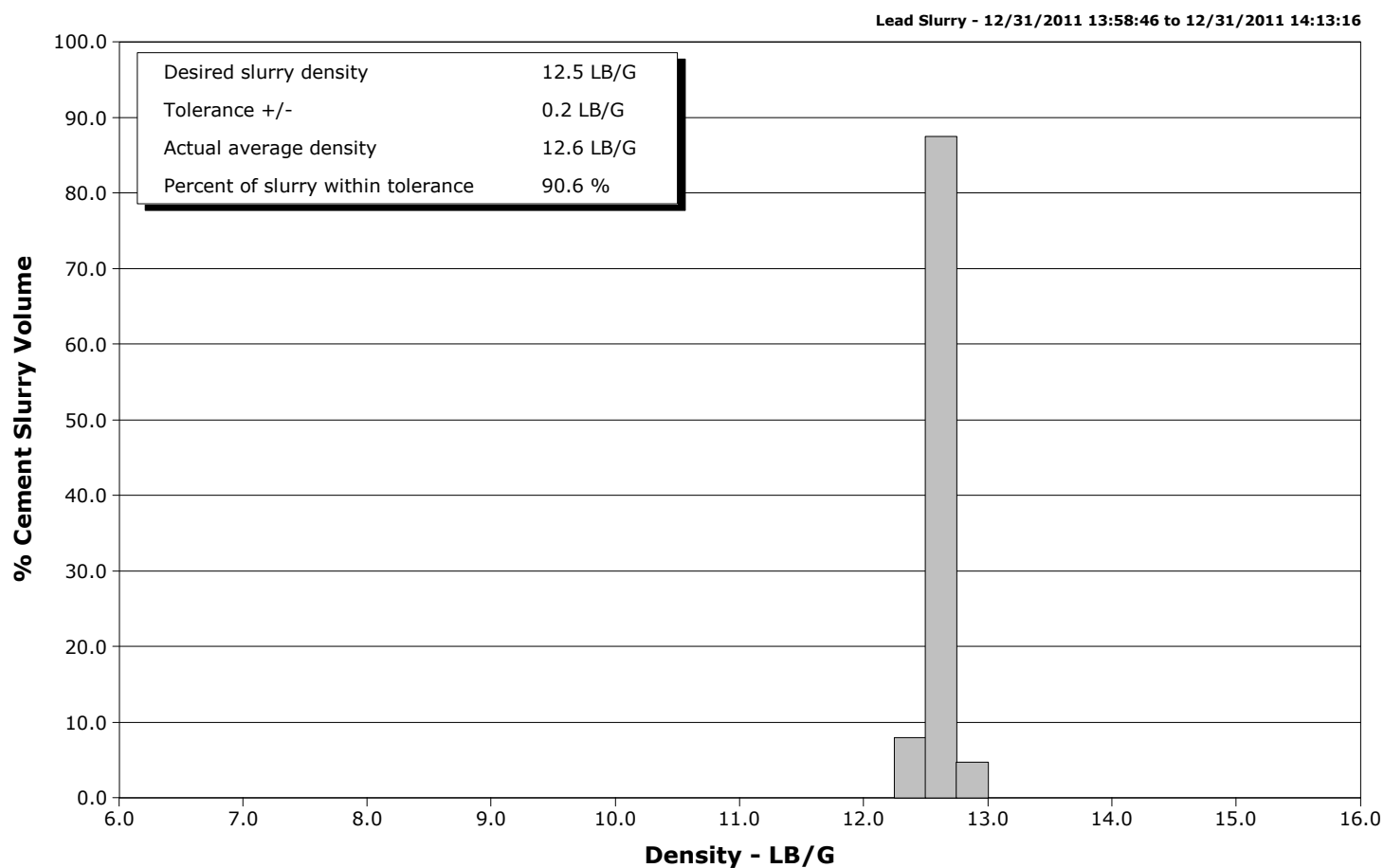


Well	HMU FEDERAL 16-9C	Client	EnCana
Field	Mamm Creek	SIR No.	682781
Engineer	Dant Ryan/ Ted Hansen	Job Type	9 5/8 Surface
Country	United States	Job Date	12-30-2011



Well HMU FEDERAL 16-9C
Field Mamm Creek
Engineer Dant Ryan/ Ted Hansen
Country United States

Client EnCana
SIR No. 682781
Job Type 9 5/8 Surface
Job Date 12-30-2011



Page 1 of 3

Well HMU FEDERAL 16-9C 16-9C			Field Mamm Creek		Job Start Dec/30/2011		Customer EnCana		Job Number 682781	
Date	Time 24-hr clock	Treating Pressure PSI		Flow Rate B/M	Density LB/G		Volume BBL		Message	
12/31/2011	13:27:08	0		0.0	8.37		0.1		Start Pumping Spacer	
12/31/2011	13:27:09	-0		0.0	8.37		0.1		Pump 20bbls of Water Spacer	
12/31/2011	13:27:10	0		0.0	8.37		0.1		Good Returns	
12/31/2011	13:28:31	0		0.0	8.37		0.1			
12/31/2011	13:30:11	0		0.0	8.37		0.1			
12/31/2011	13:31:51	-0		0.0	8.37		0.2			
12/31/2011	13:33:31	0		0.0	8.37		0.2			
12/31/2011	13:35:11	-0		0.0	8.37		0.2			
12/31/2011	13:36:51	-0		0.0	8.37		0.3			
12/31/2011	13:38:31	-1		0.0	8.37		0.3			
12/31/2011	13:40:11	-1		0.0	8.37		0.3			
12/31/2011	13:41:51	-1		0.0	8.37		0.4			
12/31/2011	13:43:31	-1		0.0	8.37		0.4			
12/31/2011	13:45:11	-4		0.0	8.37		0.4			
12/31/2011	13:46:51	-3		0.0	8.37		0.0			
12/31/2011	13:48:31	20		0.0	8.37		2.1			
12/31/2011	13:50:11	429		0.0	8.37		2.1			
12/31/2011	13:51:51	2849		0.0	8.37		2.1			
12/31/2011	13:53:31	92		2.0	8.37		2.6			
12/31/2011	13:55:11	154		3.9	8.37		7.6			
12/31/2011	13:56:51	168		4.8	8.37		15.5			
12/31/2011	13:58:31	169		4.8	11.91		23.4			
12/31/2011	13:58:39	224		4.7	12.47		24.0		End Spacer	
12/31/2011	13:58:40	224		4.7	12.48		24.1		Start Cement Slurry	
12/31/2011	13:58:46	237		4.6	12.59		24.6		Start Mixing Lead Slurry	
12/31/2011	13:58:53	232		4.6	12.62		25.1		Reset Total, Vol = 59.17 bbl	
12/31/2011	13:58:58	235		4.7	12.63		25.5		Pump 282sks (106bbls) 12.5Lead	
12/31/2011	13:59:58	555		8.6	12.62		32.4		Sample # 010670	
12/31/2011	14:00:11	561		8.6	12.64		34.3			
12/31/2011	14:01:51	528		8.7	12.59		48.7			
12/31/2011	14:01:57	513		8.7	12.59		49.5		Good Returns	
12/31/2011	14:03:31	499		8.6	12.65		63.1			
12/31/2011	14:05:11	504		8.5	12.60		77.2			
12/31/2011	14:06:51	465		8.4	12.55		91.2			
12/31/2011	14:08:31	474		8.3	12.74		105.3			
12/31/2011	14:10:11	495		8.4	12.65		119.3			
12/31/2011	14:11:51	304		6.5	12.50		131.2			
12/31/2011	14:13:16	317		6.5	12.45		140.4		End Lead Slurry	
12/31/2011	14:13:19	295		6.5	12.44		140.7		Shut Down Batch up Tail	
12/31/2011	14:13:31	-1		3.4	12.48		142.0			
12/31/2011	14:15:11	-2		0.0	12.58		142.1			
12/31/2011	14:16:51	-2		0.0	12.49		142.1			
12/31/2011	14:18:31	45		2.2	16.10		142.3			
12/31/2011	14:19:48	276		4.6	15.90		147.3		Start Mixing Tail Slurry	
12/31/2011	14:19:50	275		4.6	15.90		147.5		Pump 150sks (31bbls) 15.8 Tail	
12/31/2011	14:19:51	270		4.6	15.90		147.6		Take Wet/ Dry Samples	
12/31/2011	14:20:11	280		4.7	15.91		149.1			
12/31/2011	14:21:51	258		4.6	15.86		156.8			
12/31/2011	14:21:52	264		4.6	15.86		156.9		Sample # 010631	
12/31/2011	14:23:31	267		4.6	15.86		164.5			
12/31/2011	14:25:11	276		4.6	15.76		172.2			
12/31/2011	14:25:48	5		3.0	15.73		175.1		End Tail Slurry	
12/31/2011	14:25:50	2		1.1	15.76		175.2		End Cement Slurry	
12/31/2011	14:25:51	-2		0.4	15.80		175.2		Drop Top Plug	

Well			Field		Job Start	Customer	Job Number
HMU FEDERAL 16-9C 16-9C			Mamm Creek		Dec/30/2011	EnCana	682781
Date	Time 24-hr clock	Treating Pressure PSI	Flow Rate B/M	Density LB/G	Volume BBL	Message	
12/31/2011	14:25:53	-2	0.1	15.82	175.2	Displace 118bbls of Water	
12/31/2011	14:25:54	-2	0.0	15.82	175.2	Good Returns	
12/31/2011	14:26:51	5	0.0	15.78	175.2		
12/31/2011	14:28:31	3	0.1	15.59	175.2		
12/31/2011	14:30:11	111	2.4	9.84	175.6		
12/31/2011	14:31:51	240	6.7	9.17	181.6		
12/31/2011	14:33:31	309	8.6	8.35	194.3		
12/31/2011	14:33:44	348	8.6	8.59	196.2	Reset Total, Vol = 7.49 bbl	
12/31/2011	14:35:11	324	8.6	8.38	208.7		
12/31/2011	14:36:51	356	8.7	8.35	223.0		
12/31/2011	14:38:31	447	8.6	8.36	237.4		
12/31/2011	14:40:11	482	8.6	8.37	251.8		
12/31/2011	14:41:51	559	8.2	6.80	265.6		
12/31/2011	14:42:52	610	8.2	8.35	273.9	40bbls of Cement Back To Surface	
12/31/2011	14:43:31	635	8.3	8.36	279.3		
12/31/2011	14:45:11	452	4.7	8.37	288.3		
12/31/2011	14:46:51	412	2.4	8.37	293.9		
12/31/2011	14:48:31	437	2.4	8.37	297.8		
12/31/2011	14:49:22	1007	0.0	8.37	299.6	Bump Top Plug	
12/31/2011	14:50:11	1001	0.0	8.37	299.6		
12/31/2011	14:51:51	-5	0.0	8.37	299.6		
12/31/2011	14:53:31	1	0.0	8.37	299.6		
12/31/2011	14:55:11	-4	0.0	8.37	299.6		
12/31/2011	14:56:47	2	0.0	8.38	299.6	1/2bbl Back	
12/31/2011	14:56:48	2	0.0	8.38	299.6	End Job	

Post Job Summary

Average Pump Rates, bbl/min					Volume of Fluid Injected, bbl							
Slurry 3.8	N2	Mud	Maximum Rate 25.0	Total Slurry 333.7	Mud 0.0	Spacer 24.4	N2					
Treating Pressure Summary, psi					Breakdown Fluid							
Maximum 3084	Final 106	Average 307	Bump Plug to 900	Breakdown	Type	Volume bbl	Density lb/gal					
Avg. N2 Percent %	Designed Slurry Volume 137.0 bbl	Displacement 124.6 bbl	Mix Water Temp 60 degF	Cement Circulated to Surface?		Volume 40.0 bbl						
				Washed Thru Perfs		To ft						
Customer or Authorized Representative Erasmo Parras			Schlumberger Supervisor Dant Ryan/ Ted Hansen			Circulation Lost	Job Completed					
						-	-					