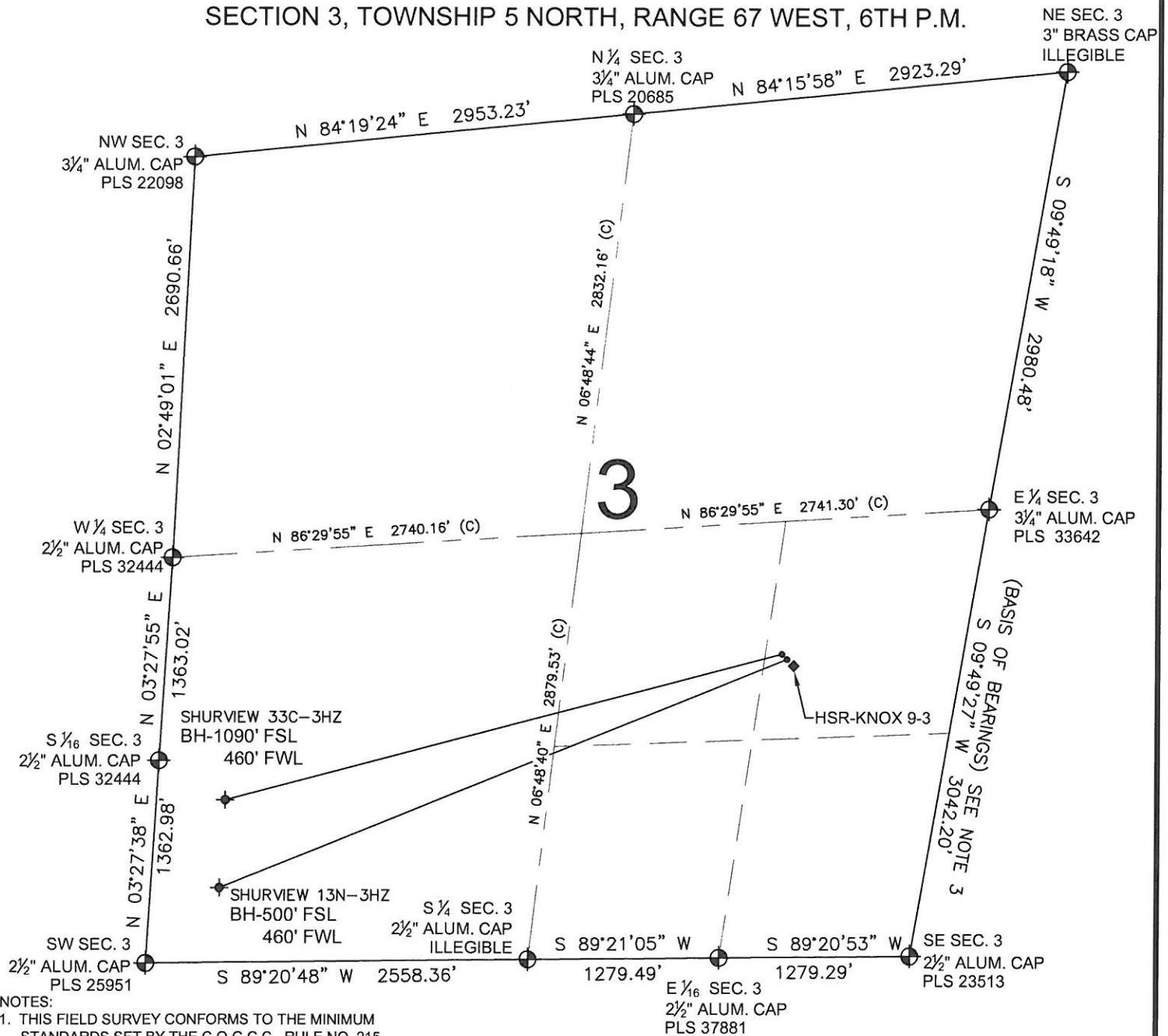


# PAD DRAWING: SHURVIEW 2 PAD

SECTION 3, TOWNSHIP 5 NORTH, RANGE 67 WEST, 6TH P.M.



## NOTES:

1. THIS FIELD SURVEY CONFORMS TO THE MINIMUM STANDARDS SET BY THE C.O.G.C.C., RULE NO. 215
2. HORIZONTAL POSITIONS AND ORTHOMETRIC ELEVATIONS SHOWN AT THE WELL HEAD, ARE BASED ON GPS-RTK POSITIONS DERIVED FROM MINIMUM 2-HOUR STATIC OBSERVATIONS CORRECTED BY THE NATIONAL GEODETIC SURVEY ONLINE POSITIONING USER SERVICE, O.P.U.S. DATUM: HORIZONTAL = NAD83/2007, VERTICAL = NAVD88
3. THE BASIS OF BEARINGS ARE STATE PLANE COORDINATE SYSTEM GRID BEARINGS SHOWN HEREON BETWEEN THE DESCRIBED MONUMENTS SHOWN HEREON.
4. GRID DISTANCES ARE SHOWN, AS MEASURED IN THE FIELD, WITH TIES TO WELLS MEASURED PERPENDICULAR TO SECTION LINES.

## LEGEND

- = EXISTING MONUMENT   
 = BOTTOM HOLE   
 BH = BOTTOM HOLE  
 = PROPOSED WELL   
 = EXISTING WELL

## NOTES:

SHURVIEW 33C-3HZ TO BE AT 2016' FSL, 1191' FEL.  
 BOTTOM HOLE AT 1090' FSL & 460' FWL.  
 SHURVIEW 13N-3HZ TO BE AT 1999' FSL, 1164' FEL.  
 BOTTOM HOLE AT 500' FSL & 460' FWL.  
 HSR-KNOX 9-3 IS 1982' FSL, 1136' FEL.

PREPARED BY:

**PFS**



Petroleum Field Services, LLC  
1801 W. 13th Ave.  
Denver, CO 80204

KERR-MCGEE OIL & GAS ONSHORE LP

FIELD DATE:  
04-30-12

PAD NAME:  
SHURVIEW 2 PAD

DRAWING DATE:  
06-11-12

SURFACE LOCATION:

WELD COUNTY, COLORADO

BY:  
KAG

CHECK:  
DA

NE 1/4 SE 1/4, SEC. 3, T5N, R67W, 6TH P.M.

