

T20S, R70W, 6th P.M.

Set Marked Stone
Lat: 38.330297
Long: 105.180444

New SHL: 527' FNL
38, 32858 - 105.178654 511' FNL

589.5214"W

589.5219"W

589.5202"W - 2594.81' (Meas.)

R 70
R 69

Thomasson Petroleum E&P LLC

Well location, PATHFINDER C 11-12 #1, located as shown in the NW 1/4 NW 1/4 of Section 12, T20S, R70W, 6th P.M., Fremont County, Colorado.

BASIS OF ELEVATION

USGS COOPERATIVE BASE NETWORK CORNER DESIGNATION "K-341". NGS DATA SHEET LISTED THE NAVD 83 ELEVATION AS BEING 5306.35 FEET.

AUG 27 2012

COGCC

BASIS OF BEARINGS IS A G.P.S. OBSERVATION.

N00°16'42"W - 2649.29' (Meas.)

S00°18'24"W - 2620.90' (Meas.)

N00°16'49"W - 2649.14' (Meas.)

S00°18'36"W - 2621.19' (Meas.)

589°14'25"W - 2568.01' (Meas.)

589°14'17"W - 2568.01' (Meas.)

PDOP = 1.9

LEGEND:

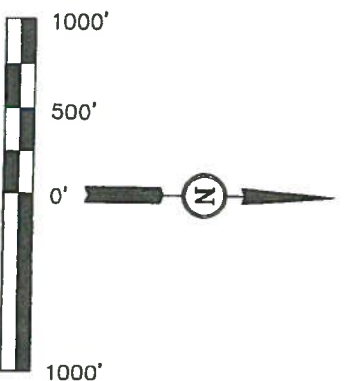
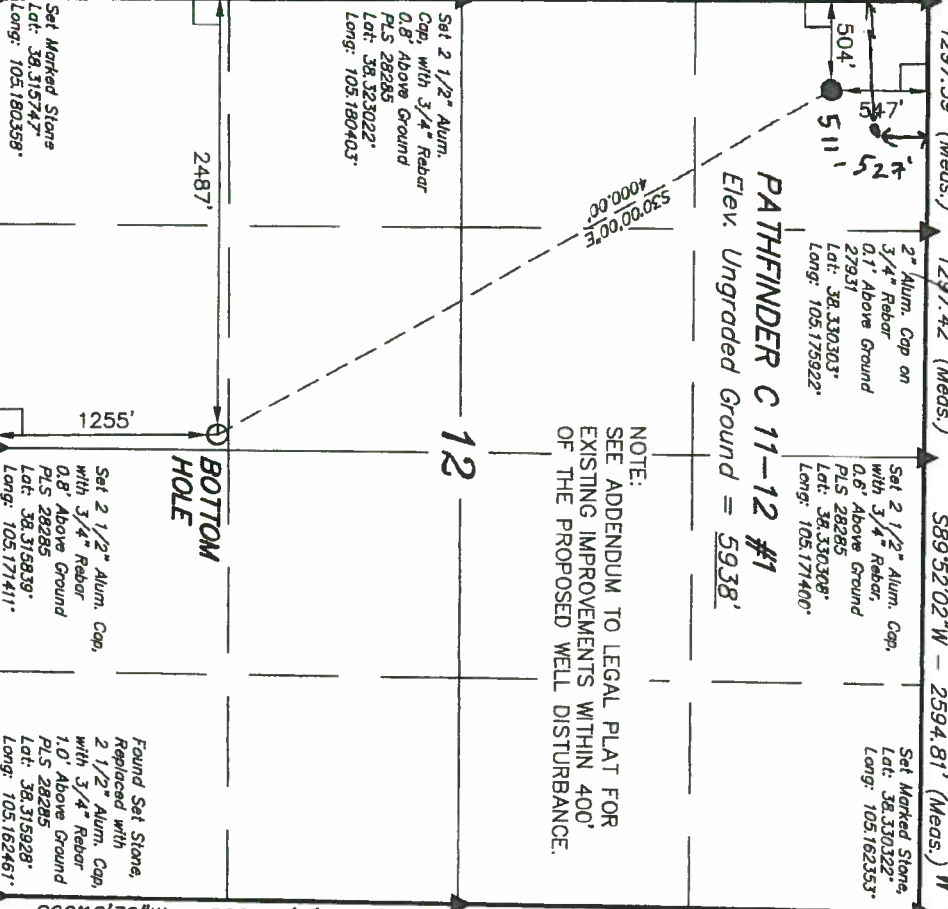
- 90° SYMBOL
- PROPOSED WELL HEAD.
- SECTION CORNERS LOCATED.

NAD 83 (TARGET BOTTOM HOLE)	NAD 83 (SURFACE LOCATION)
LATITUDE = 38°19'09.41" (38.319281)	LATITUDE = 38°19'43.68" (38.328794)
LONGITUDE = 105°0'16.16" (105.171711)	LONGITUDE = 105°10'43.24" (105.178678)
NAD 27 (TARGET BOTTOM HOLE)	NAD 27 (SURFACE LOCATION)
LATITUDE = 38°19'09.41" (38.319281)	LATITUDE = 38°19'43.66" (38.328794)
LONGITUDE = 105°0'16.20" (105.171672)	LONGITUDE = 105°10'41.28" (105.178133)
STATE PLANE NAD 83	STATE PLANE NAD 83
N: 1177152.72 E: 3094191.77	N: 1180610.43 E: 3092180.66
STATE PLANE NAD 27	STATE PLANE NAD 27
N: 177149.28 E: 2094350.72	N: 180606.98 E: 2092339.56

UTAH ENGINEERING & LAND SURVEYING			
85 SOUTH 200 EAST - VERNAL, UTAH 84078			
(436) 789-1017			
SCALE	DATE SURVEYED:	DATE DRAWN:	
1" = 1000'	03-27-12	04-02-12	
PARTY	REFERENCES		
D.N. G.W. H.K.W.	G.L.O. PLAT		
WEATHER	FILE		
COOL	Thomasson Petroleum E&P LLC		

NOTE:
SEE ADDENDUM TO LEGAL PLAT FOR EXISTING IMPROVEMENTS WITHIN 400' OF THE PROPOSED WELL DISTURBANCE.

PATHFINDER C 11-12 #1
Elev. Ungraded Ground = 5938'



CERTIFICATE

THIS IS TO CERTIFY THAT THE ABOVE PLAT WAS PREPARED FROM FIELD NOTES OF ACTUAL SURVEYS MADE BY ME OR UNDER MY SUPERVISION AND THAT THE SAME ARE TRUE AND CORRECT TO THE BEST OF MY KNOWLEDGE AND BELIEF.

REGISTERED LAND SURVEYOR
REGISTRATION NO. 17492
STATE OF COLORADO
04-06-12