
WPX ENERGY ROCKY MOUNTAIN LLC-EBUS

**PA 514-29
Parachute
Garfield County , Colorado**

Cement Surface Casing
14-Mar-2012

Post Job Report

The Road to Excellence Starts with Safety

Sold To #: 300721	Ship To #: 2910752	Quote #:	Sales Order #: 9303632
Customer: WPX ENERGY ROCKY MOUNTAIN LLC-EBUS	Customer Rep: WILSON, W.C		
Well Name: PA	Well #: 514-29	API/UWI #: 05-045-19533	
Field: Parachute	City (SAP): PARACHUTE	County/Parish: Garfield	State: Colorado
Lat: N 39.49 deg. OR N 39 deg. 29 min. 23.615 secs.	Long: W 108.023 deg. OR W -109 deg. 58 min. 36.714 secs.		
Contractor: NABORS 577	Rig/Platform Name/Num: NAB 577		
Job Purpose: Cement Surface Casing			
Well Type: Development Well	Job Type: Cement Surface Casing		
Sales Person: SCOTT, KYLE	Srvc Supervisor: NICKLE, RYON	MBU ID Emp #: 454759	

Job Personnel

HES Emp Name	Exp Hrs	Emp #	HES Emp Name	Exp Hrs	Emp #	HES Emp Name	Exp Hrs	Emp #
BANKS, BRENT A	11	371353	HARDRICK, RAYMOND Frank	11	391324	LINN, PAUL Andrew	11	479143
NICKLE, RYON	11	454759						

Equipment

HES Unit #	Distance-1 way	HES Unit #	Distance-1 way	HES Unit #	Distance-1 way	HES Unit #	Distance-1 way
10565341	60 mile	10744648C	60 mile	10804567	60 mile	10867094	60 mile
10897925	60 mile	10951250	60 mile	10998508	60 mile		

Job Hours

Date	On Location Hours	Operating Hours	Date	On Location Hours	Operating Hours	Date	On Location Hours	Operating Hours
3/14/2012	.5	0	3/15/2012	10.5	3			

TOTAL Total is the sum of each column separately

Job

Formation Name	Job	Job Times
Formation Depth (MD)	Top 0 Bottom 2245	Date Time Time Zone
Form Type	BHST	Called Out 13 - Mar - 2012 20:00 MST
Job depth MD	2245. ft	On Location 13 - Mar - 2012 23:30 MST
Water Depth	Job Depth TVD 2245. ft	Job Started 14 - Mar - 2012 08:00 MST
Perforation Depth (MD)	Wk Ht Above Floor 4. ft	Job Completed 14 - Mar - 2012 09:13 MST
	From To	Departed Loc 14 - Mar - 2012 10:30 MST

Well Data

Description	New / Used	Max pressure psig	Size in	ID in	Weight lbm/ft	Thread	Grade	Top MD ft	Bottom MD ft	Top TVD ft	Bottom TVD ft
-------------	------------	-------------------	---------	-------	---------------	--------	-------	-----------	--------------	------------	---------------

Sales/Rental/3rd Party (HES)

Description	Qty	Qty uom	Depth	Supplier
PLUG,CMTG,TOP,9 5/8,HWE,8.16 MIN/9.06 MA	1	EA		

Tools and Accessories

Type	Size	Qty	Make	Depth	Type	Size	Qty	Make	Depth	Type	Size	Qty	Make
Guide Shoe					Packer					Top Plug	9.625	1	HES
Float Shoe					Bridge Plug					Bottom Plug			
Float Collar					Retainer					SSR plug set			
Insert Float										Plug Container	9.625	1	HES
Stage Tool										Centralizers			

Miscellaneous Materials

Gelling Agt	Conc	Surfactant	Conc	Acid Type	Qty	Conc	%
Treatment Fld	Conc	Inhibitor	Conc	Sand Type	Size	Qty	

Fluid Data

Fluid Data									
Stage/Plug #: 1									
Fluid #	Stage Type	Fluid Name	Qty	Qty uom	Mixing Density lbm/gal	Yield ft3/sk	Mix Fluid Gal/sk	Rate bbl/min	Total Mix Fluid Gal/sk

Stage/Plug #: 1									
Fluid #	Stage Type	Fluid Name	Qty	Qty uom	Mixing Density lbm/gal	Yield ft ³ /sk	Mix Fluid Gal/sk	Rate bbl/min	Total Mix Fluid Gal/sk
1	Fresh Water		20.00	bbl	8.33	.0	.0	4	
2	Lead Cement	VERSACEM (TM) SYSTEM (452010)	330.0	sacks	12.3	2.38	13.75	7	13.75
3	Tail Cement	VERSACEM (TM) SYSTEM (452010)	160.0	sacks	12.8	2.11	11.75	7	11.75
11.75 Gal		FRESH WATER							
4	Displacement Fluid		171.00	bbl	8.34	.0	.0	10	
Calculated Values		Pressures		Volumes					
Displacement	171.9	Shut In: Instant		Lost Returns	0	Cement Slurry	200	Pad	
Top Of Cement		5 Min		Cement Returns	12	Actual Displacement	171.9	Treatment	
Frac Gradient		15 Min		Spacers	20	Load and Breakdown		Total Job	391.9
Rates									
Circulating	RIG	Mixing	7	Displacement	10	Avg. Job	8.5		
Cement Left In Pipe	Amount	0 ft	Reason	Shoe Joint					
Frac Ring # 1 @	ID	Frac ring # 2 @	ID	Frac Ring # 3 @	ID	Frac Ring # 4 @	ID		
The Information Stated Herein Is Correct				Customer Representative Signature					

The Road to Excellence Starts with Safety

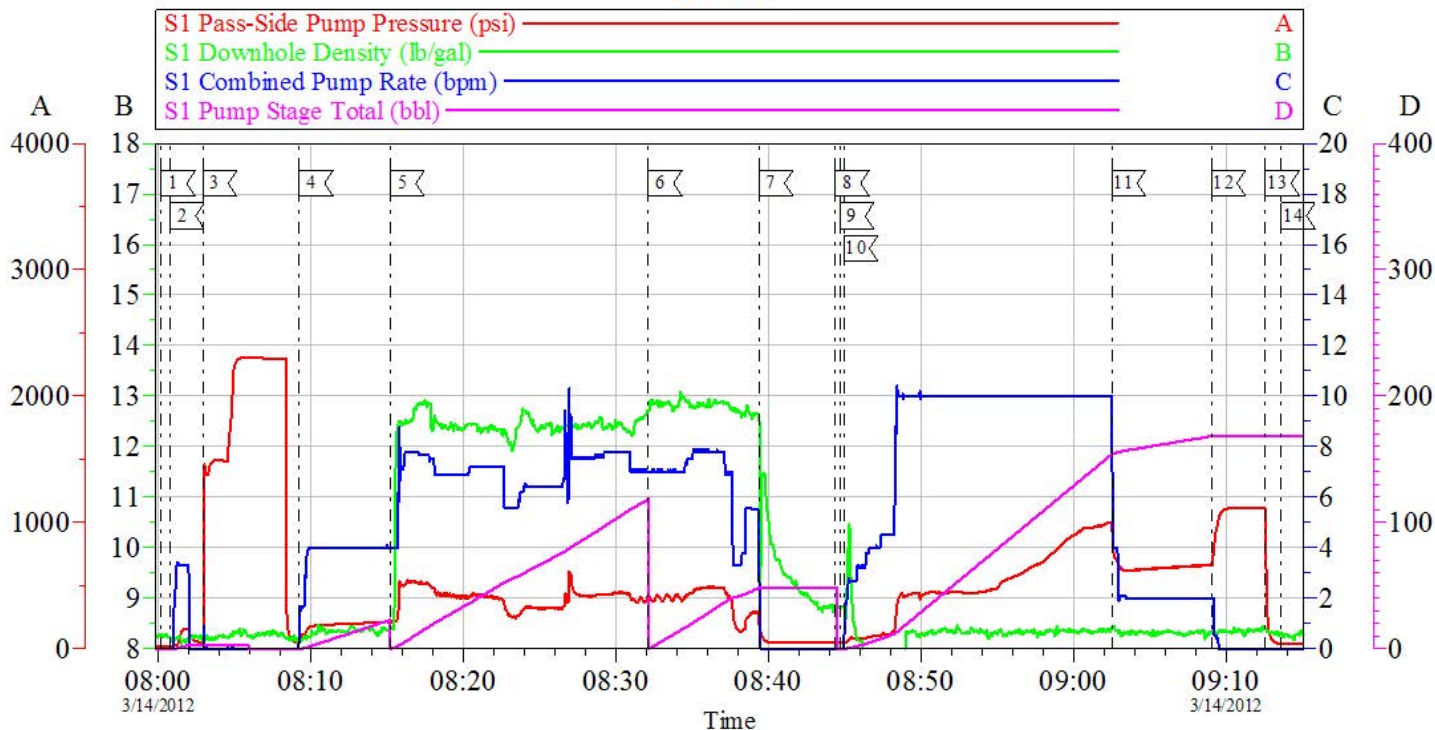
Sold To #: 300721		Ship To #: 2910752		Quote #:		Sales Order #: 9303632	
Customer: WPX ENERGY ROCKY MOUNTAIN LLC-EBUS				Customer Rep: WILSON, W.C			
Well Name: PA			Well #: 514-29			API/UWI #: 05-045-19533	
Field: Parachute		City (SAP): PARACHUTE		County/Parish: Garfield		State: Colorado	
Legal Description:							
Lat: N 39.49 deg. OR N 39 deg. 29 min. 23.615 secs.				Long: W 108.023 deg. OR W -109 deg. 58 min. 36.714 secs.			
Contractor: NABORS 577			Rig/Platform Name/Num: NAB 577				
Job Purpose: Cement Surface Casing						Ticket Amount:	
Well Type: Development Well			Job Type: Cement Surface Casing				
Sales Person: SCOTT, KYLE			Srvc Supervisor: NICKLE, RYON			MBU ID Emp #: 454759	

Activity Description	Date/Time	Cht #	Rate bbl/min	Volume bbl		Pressure psig		Comments
				Stage	Total	Tubing	Casing	
Call Out	03/13/2012 20:00							HES CEMENT CREW
Pre-Convoy Safety Meeting	03/13/2012 22:15							ALL HES CEMENT CREW
Crew Leave Yard	03/13/2012 22:30							
Arrive At Loc	03/13/2012 23:30							RIG PULLING DRILL PIPE
Assessment Of Location Safety Meeting	03/14/2012 06:30							ALL HES CEMENT CREW
Other	03/14/2012 06:45							SPOT EQUIPMENT; 1 CEMENTERS F 550, 1 ELITE PUMPING UNIT, 2 660 BULK TRANSPORT
Pre-Rig Up Safety Meeting	03/14/2012 07:00							ALL HES CEMENT CREW
Pre-Job Safety Meeting	03/14/2012 07:40							ALL HES CEMENT CREW, RIG CREW, COMPANY REP, AVAILABLE 3RD PARTY EE'S
Start Job	03/14/2012 08:00							TD- 1320' TP- 1282' SHOE- 44.32' OH- 13.5" SURFACE CASING- 9.625" 32.3#/FT H-40 CENTRALIZERS- 7=2 TURBULIZERS MUD- 9.8 PPG YP- 26 PV- 28
Other	03/14/2012 08:00		2	2			156.0	FILL LINES, FRESH WATER
Activity Description	Date/Time	Cht #	Rate bbl/min	Volume bbl		Pressure psig		Comments
				Stage	Total	Tubing	Casing	

Pressure Test	03/14/2012 08:02							STALL OUT @ PSI, HELD FOR 30 SEC. PRESSURE UP TO PSI HELD FOR 2 MIN, PRESSURE DROP TO PSI
Pump Spacer 1	03/14/2012 08:09		4	20			208.0	FRESH WATER
Pump Lead Cement	03/14/2012 08:15		8	139.8			412.0	330 SKS; 12.3 PPG, 2.38 FT3/SK, 13.75 GAL/SK
Pump Tail Cement	03/14/2012 08:32		8	60.12				160 SKS; 12.8 PPG, 2.11 FT3/SK, 11.75 GAL/SK
Shutdown	03/14/2012 08:39							WASH UP ON TOP OF PLUG PER CO REP
Drop Top Plug	03/14/2012 08:44							CO REP VERIFIED PLUG LAUNCHED
Pump Displacement	03/14/2012 08:44		10	161.9			985.0	FRESH WATER
Slow Rate	03/14/2012 09:02		2	10			642.0	
Bump Plug	03/14/2012 09:09						1186. 0	
Check Floats	03/14/2012 09:12							FLOATS HELD, RETURNED 4/5 BBLS H2O
End Job	03/14/2012 09:13							PIPE RECIPROCATED, GOOD RETURNS THROUGHOUT, 12 BBLS CEMENT TO SURFACE, 9.625" CMT HEAD AND 2" VALVE LEFT ON LOCATION, CO REP DECIDED TO KEEP HEAD AND VALVE ON FOR 4 HOURS STARTING AT 0930.
Post-Job Safety Meeting (Pre Rig-Down)	03/14/2012 09:15							ALL HES CEMENT CREW
Pre-Convoy Safety Meeting	03/14/2012 10:15							ALL HES CEMENT CREW
Crew Leave Location	03/14/2012 10:30							THANK YOU FOR USING HALLIBURTON CEMENTING, RYON NICKLE AND CREW

WPX - PA 5124-29

SURFACE



Local Event Log

1 START JOB	08:00:12	2 FILL LINES	08:00:47	3 PRESSURE TEST	08:02:56
4 PUMP H2O SPACER	08:09:14	5 PUMP LEAD CEMENT	08:15:14	6 PUMP TAIL CEMENT	08:32:07
7 SHUTDOWN	08:39:24	8 DROP TOP PLUG	08:44:23	9 WASHUP ON PLUG	08:44:41
10 PUMP DISPLACEMENT	08:44:58	11 SLOW RATE	09:02:31	12 BUMP PLUG	09:09:03
13 CHECK FLOATS	09:12:35	14 END JOB	09:13:37		

Customer: WPX ENERGY ROCKY MOUNTAIN LLC-EBUS
Well Description: PA 514-29
Company Rep: WC WILSON

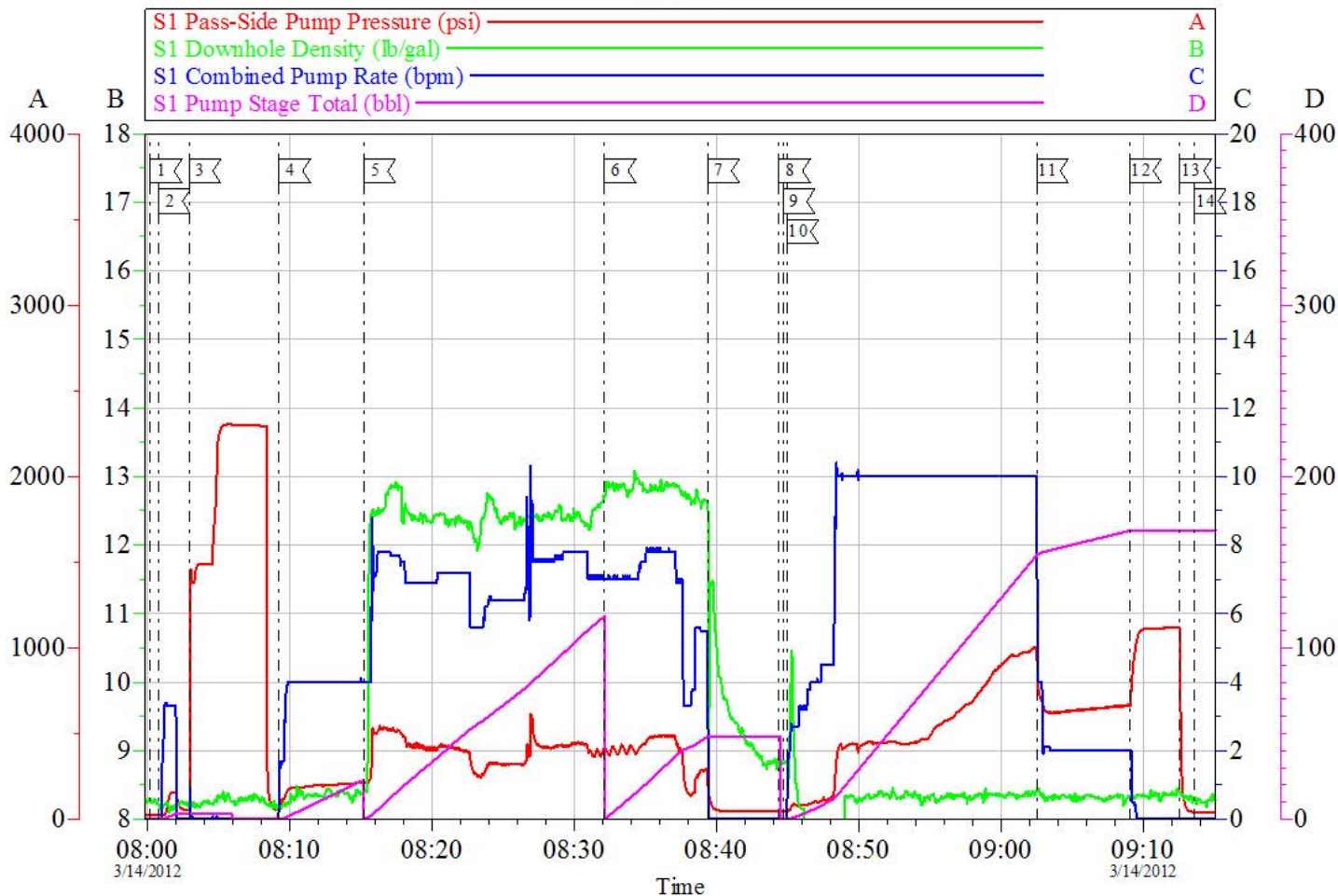
Job Date: 14-Mar-2012
Job Type: SURFACE
Cement Supervisor: RYON NICKLE

Sales Order #: 9303632
ADC Used: YES
Elite # / Operator: E6 / BRENT BANKS

OptiCem v6.4.10
14-Mar-12 09:42

WPX - PA 5124-29

SURFACE



Customer: WPX ENERGY ROCKY MOUNTAIN LLC-EBUS
 Well Description: PA 514-29
 Company Rep: WC WILSON

Job Date: 14-Mar-2012
 Job Type: SURFACE
 Cement Supervisor: RYON NICKLE

Sales Order #: 9303632
 ADC Used: YES
 Elite # / Operator: E6 / BRENT BANKS

OptiCem v6.4.10
 14-Mar-12 09:42

HALLIBURTON

Water Analysis Report

Company: WPX

Submitted by: RYON NICKLE

Attention: LAB

Lease NABORS 577

Well # PA 514-29

Date: 3/13/2012

Date Rec.: 3/13/2012

S.O.# 9303632

Job Type: SURFACE

Specific Gravity	<i>MAX</i>	1
pH	<i>8</i>	7.5
Potassium (K)	<i>5000</i>	0 Mg / L
Hrdness	<i>500</i>	460 Mg / L
Iron (FE2)	<i>300</i>	0 Mg / L
Chlorides (Cl)	<i>3000</i>	350 Mg / L
Sulfates (SO ₄)	<i>1500</i>	<200 Mg / L
Temp	<i>40-80</i>	42 Deg
Total Dissolved Solids		420 Mg / L

Respectfully: RYON NICKLE

Title: CEMENTING SUPERVISOR

Location: Grand Junction, CO

NOTICE: This report is limited to the described sample tested. Any person using or relying on this report agrees that Halliburton shall not be liable for any loss or damage whether due to act or omission resulting from such report or it

Sales Order #: 9303632	Line Item: 10	Survey Conducted Date: 3/14/2012
Customer: WPX ENERGY ROCKY MOUNTAIN LLC-EBUS		Job Type (BOM): CMT SURFACE CASING BOM
Customer Representative: WC WILSON		API / UWI: (leave blank if unknown) 05-045-19533
Well Name: PA		Well Number: 514-29
Well Type: Development Well	Well Country: United States of America	
H2S Present:	Well State: Colorado	Well County: Garfield

Dear Customer,

We hope that you were satisfied with the service quality of this job performed by Halliburton. It is the aim of our management and service personnel to deliver equipment and service of a standard unmatched in the service sector of the energy industry.

Please take the time to let us know if our performance met with your satisfaction. Please be as critical as possible to ensure we constantly improve our service. Your comments are of great value to us and are intended for the exclusive use of Halliburton.

CUSTOMER SATISFACTION SURVEY

CATEGORY	CUSTOMER SATISFACTION RESPONSE	
Survey Conducted Date	The date the survey was conducted	3/14/2012
Survey Interviewer	The survey interviewer is the person who initiated the survey.	RYON NICKLE (HB22175)
Customer Participation	Did the customer participate in this survey? (Y/N)	Yes
Customer Representative	Enter the Customer representative name	WC WILSON
HSE	Was our HSE performance satisfactory? Circle Y or N	Yes
Equipment	Were you satisfied with our Equipment? Circle Y or N	Yes
Personnel	Were you satisfied with our people? Circle Y or N	Yes
Customer Comment	Customer's Comment	

CUSTOMER SIGNATURE

Sales Order #: 9303632	Line Item: 10	Survey Conducted Date: 3/14/2012
Customer: WPX ENERGY ROCKY MOUNTAIN LLC-EBUS		Job Type (BOM): CMT SURFACE CASING BOM
Customer Representative: WC WILSON		API / UWI: (leave blank if unknown) 05-045-19533
Well Name: PA		Well Number: 514-29
Well Type: Development Well	Well Country: United States of America	
H2S Present:	Well State: Colorado	Well County: Garfield

KEY PERFORMANCE INDICATORS

General	
Survey Conducted Date The date the survey was conducted	3/14/2012

Cementing KPI Survey	
Type of Job Select the type of job. (Cementing or Non-Cementing)	0
Select the Maximum Deviation range for this Job What is the highest deviation for the job you just completed? This may not be the maximum well deviation.	Vertical
Total Operating Time (hours) Total Operating Hours Including Rig-up, Pumping, Rig-down. Enter in decimal format.	3
HSE Incident, Accident, Injury HSE Incident, Accident, Injury. This should be recordable incidents only.	No
Was the job purpose achieved? Was the job delivered correctly as per customer agreed design?	Yes
Operating Hours (Pumping Hours) Total number of hours pumping fluid on this job. Enter in decimal format.	1.5
Customer Non-Productive Rig Time (hrs) Lost time due to Halliburton in the start, execution, or completion of an ordered service or product, or delays in a follow-on service. Enter in decimal format. 0 if none.	0
Type of Rig Classification Job Was Performed Type Of Rig (classification) Job Was Performed On	Drilling Rig (Portable)
Number Of JSAs Performed Number Of Jsas Performed	5
Number of Unplanned Shutdowns Unplanned shutdown is when injection stops for any period of time.	0
Was this a Primary Cement Job (Yes / No)	Yes

Sales Order #: 9303632	Line Item: 10	Survey Conducted Date: 3/14/2012
Customer: WPX ENERGY ROCKY MOUNTAIN LLC-EBUS		Job Type (BOM): CMT SURFACE CASING BOM
Customer Representative: WC WILSON		API / UWI: (leave blank if unknown) 05-045-19533
Well Name: PA		Well Number: 514-29
Well Type: Development Well	Well Country: United States of America	
H2S Present:	Well State: Colorado	Well County: Garfield

Primary Cement Job= Casing job, Liner job, or Tie-back job.	
Did We Run Wiper Plugs? Did We Run Top And Bottom Casing Wiper Plugs?	Top
Mixing Density of Job Stayed in Designed Density Range (0-100%) Density Range defined as +/- .20 ppg. Calculation: Total BBLs cement mixed at designed density divided by total BBLs of cement multiplied by 100	90
Was Automated Density Control Used? Was Automated Density Control (ADC) Used ?	Yes
Pump Rate (percent) of Job Stayed At Designed Pump Rate Pump Rate range defined as +/- 1bbl/min. Calculation: Total BBLs of fluid pumped at the designed rate divided by Total BBLs of fluid pumped, multiplied by 100	90
Nbr of Remedial Sqz Jobs Rqd - Competition Number Of Remedial Squeeze Jobs Required After Primary Job Performed By Competition	0
Nbr of Remedial Plug Jobs Rqd - HES Number Of Remedial Plug Jobs Needed After Primary Plug Pumped By HES	0
Nbr of Remedial Sqz Jobs Rqd - HES Number Of Remedial Squeeze Jobs Required After Primary Job Performed By HES	0