



SUPERIOR
Hays,
Kansas

COMPENSATED
DENSITY / NEUTRON
LOG

Company	RITCHIE EXPLORATION, INC.		
Well	#1 CHAPIN-GAY		
Field	WILDCAT		
County	KIT CARSON	State	COLORADO
Location:	AP1 # : 05-063-06345-0000 2028' FSL & 2537' FEL		Other Services DIL
Permanent Datum	SEC 23 TWP 10S RGE 46W	Elevation	
Log Measured From	GROUND LEVEL	Elevation	4479
Drilling Measured From	KELLY BUSHING 11' A.G.L. KELLY BUSHING	K.B. 4490 D.F. 4488 G.L. 4479	
Date	8/17/12		
Run Number	ONE		
Depth Driller	5860		
Depth Logger	5850		
Bottom Logged Interval	5826		
Top Log Interval	4600		
Casing Driller	8 5/8" @ 392		
Casing Logger	NA		
Bit Size	7 7/8		
Type Fluid in Hole	CHEMICAL MUD	CHLORIDES 300 PPM	
Density / Viscosity	9.1/60		
pH / Fluid Loss	10.0/7.2		
Source of Sample	FLOWLINE		
Rim @ Meas. Temp	1.5 @ 83F		
Rmf @ Meas. Temp	1.12 @ 83F		
Rmc @ Meas. Temp	1.80 @ 83F		
Source of Rmf / Rmc	MEASURED		
Rim @ BHT	.94 @ 132F		
Time Circulation Stopped	2 HOURS		
Time Logger on Bottom			
Maximum Recorded Temperature	132F		
Equipment Number	680		
Location	HAYS, KS.		
Recorded By	JASON CAPPELLUCCI		
Witnessed By	DAVE WILLIAMS		

<<< Fold Here >>>

All interpretations are opinions based on inferences from electrical or other measurements and we cannot and do not guarantee the accuracy or correctness of any interpretation, and we shall not, except in the case of gross or willful negligence on our part, be liable or responsible for any loss, costs, damages, or expenses incurred or sustained by anyone resulting from any interpretation made by any of our officers, agents or employees. These interpretations are also subject to our general terms and conditions set out in our current Price Schedule.

Comments

THANK YOU FOR USING SUPERIOR WELL SERVICE (785) 628-6395
DIRECTIONS
BURLINGTON, CO. - I-70 & HWY 385 - 12 S. TO RD. G - 13 W. TO RD. 35
2 1/2 N. - 1/2 E. - N. INTO

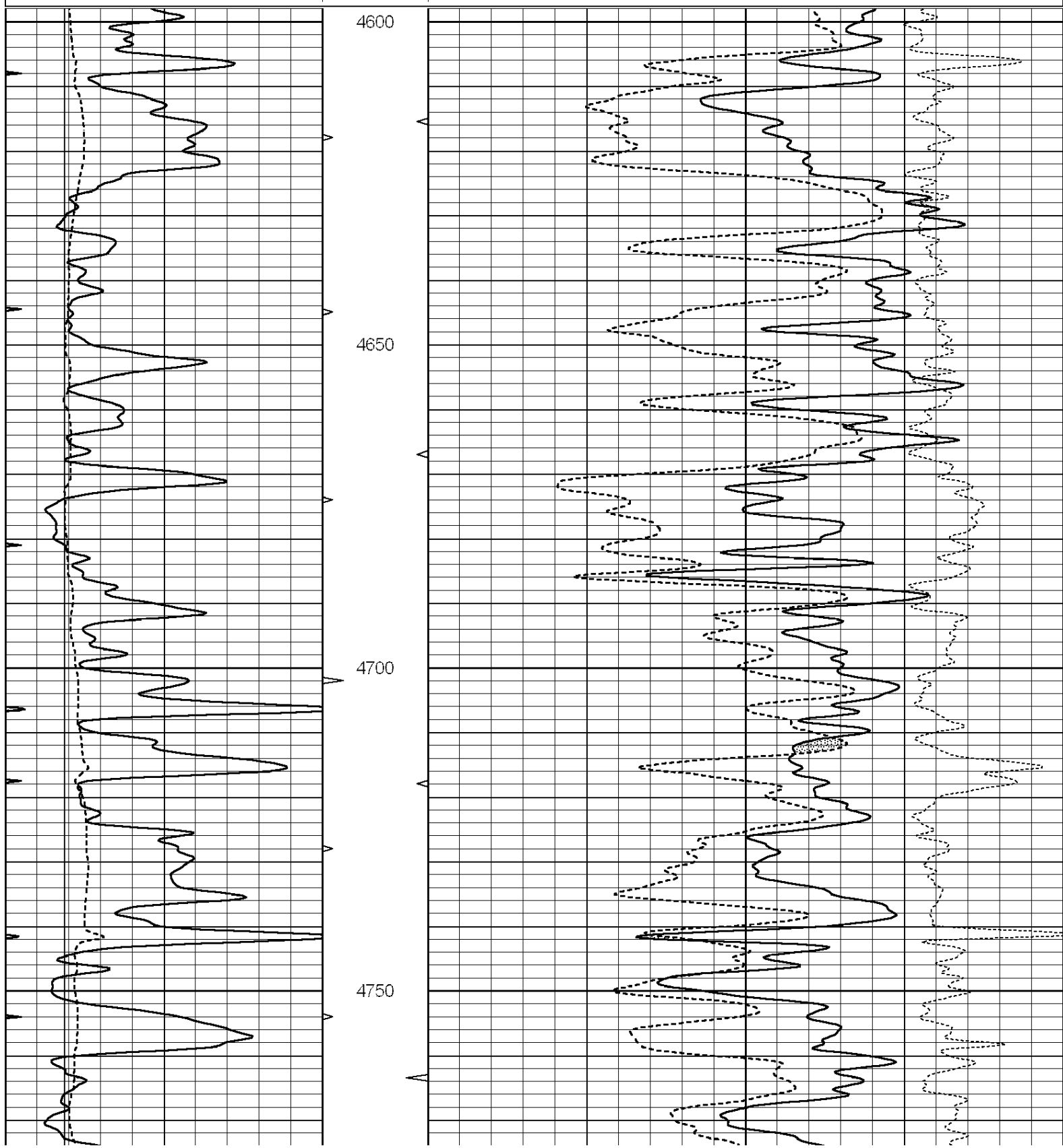


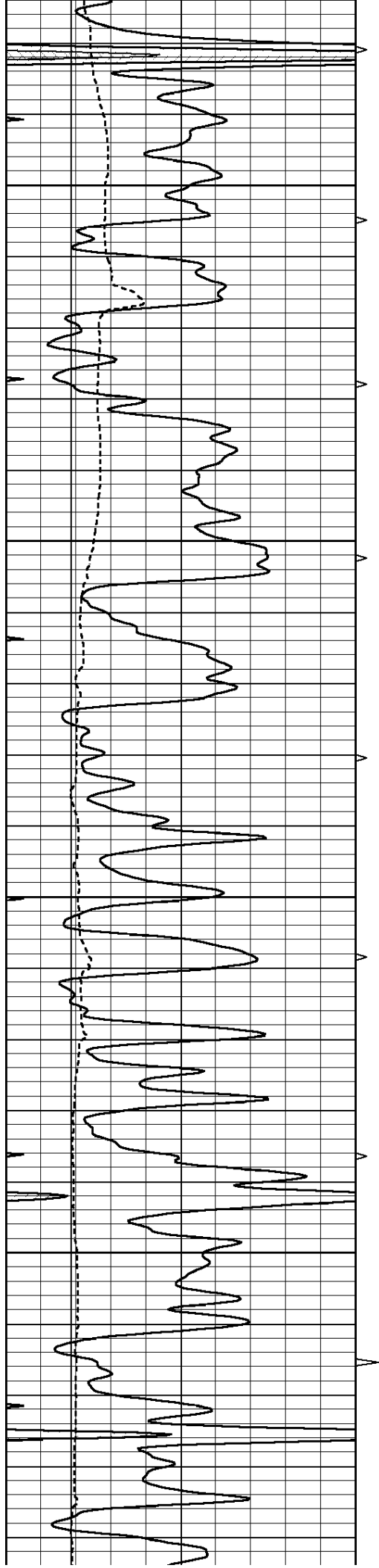
SUPERIOR
Hays,
Kansas

MAIN SECTION

Database File: 009583ddn.db
 Dataset Pathname: pass3.1
 Presentation Format: _den_neu
 Dataset Creation: Fri Aug 17 23:59:21 2012 by Calc Open-Cased 090629
 Charted by: Depth in Feet scaled 1:240

0	GAMMA RAY (GAPI)	150	AVTX	30	COMPENSATED DENSITY (pu)	-10
6	CALIPER (in)	16	10 (ft3)	0 30	COMPENSATED NEUTRON (pu)	-10
0	MINMK	20	BVTX		-0.25 CORRECTION (g/cc)	0.25
			0 (ft3)	10		



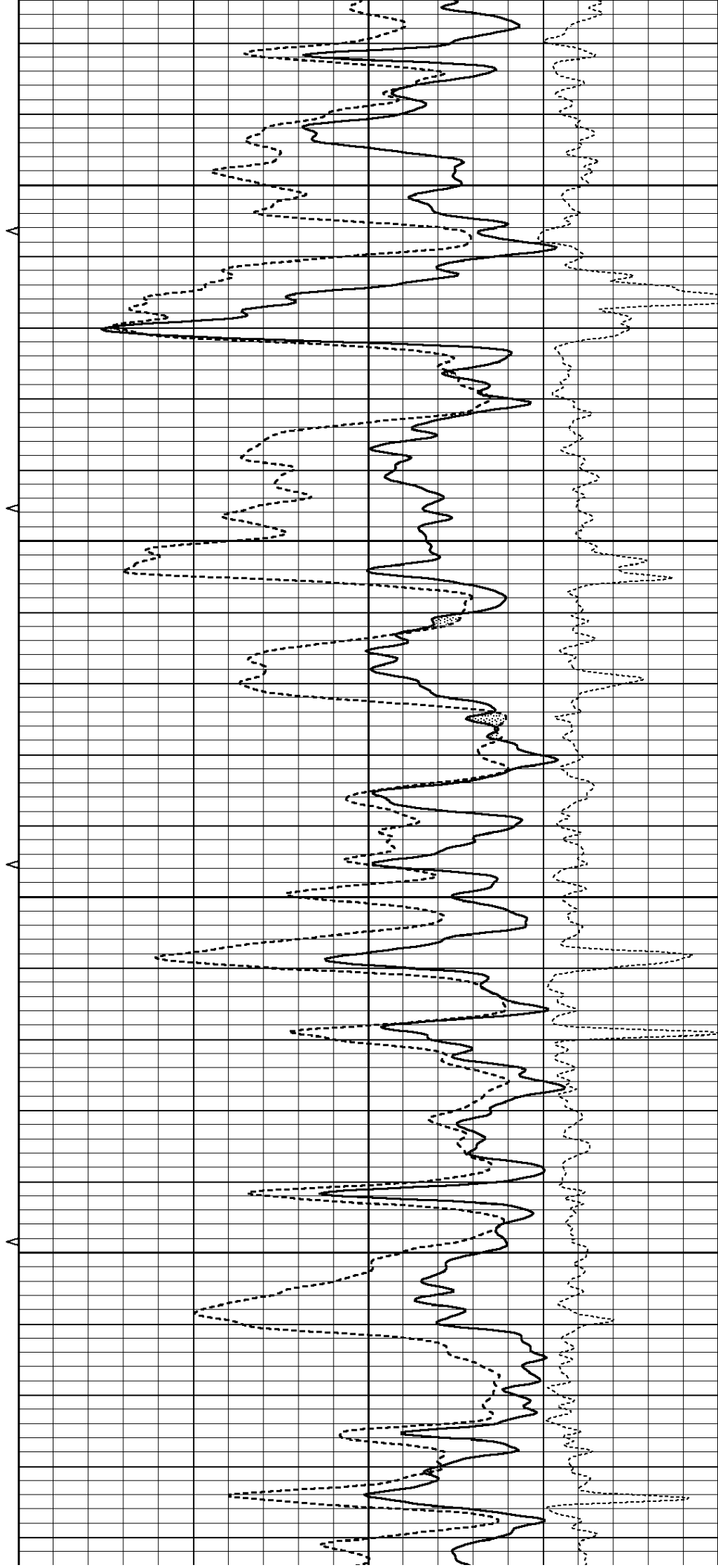


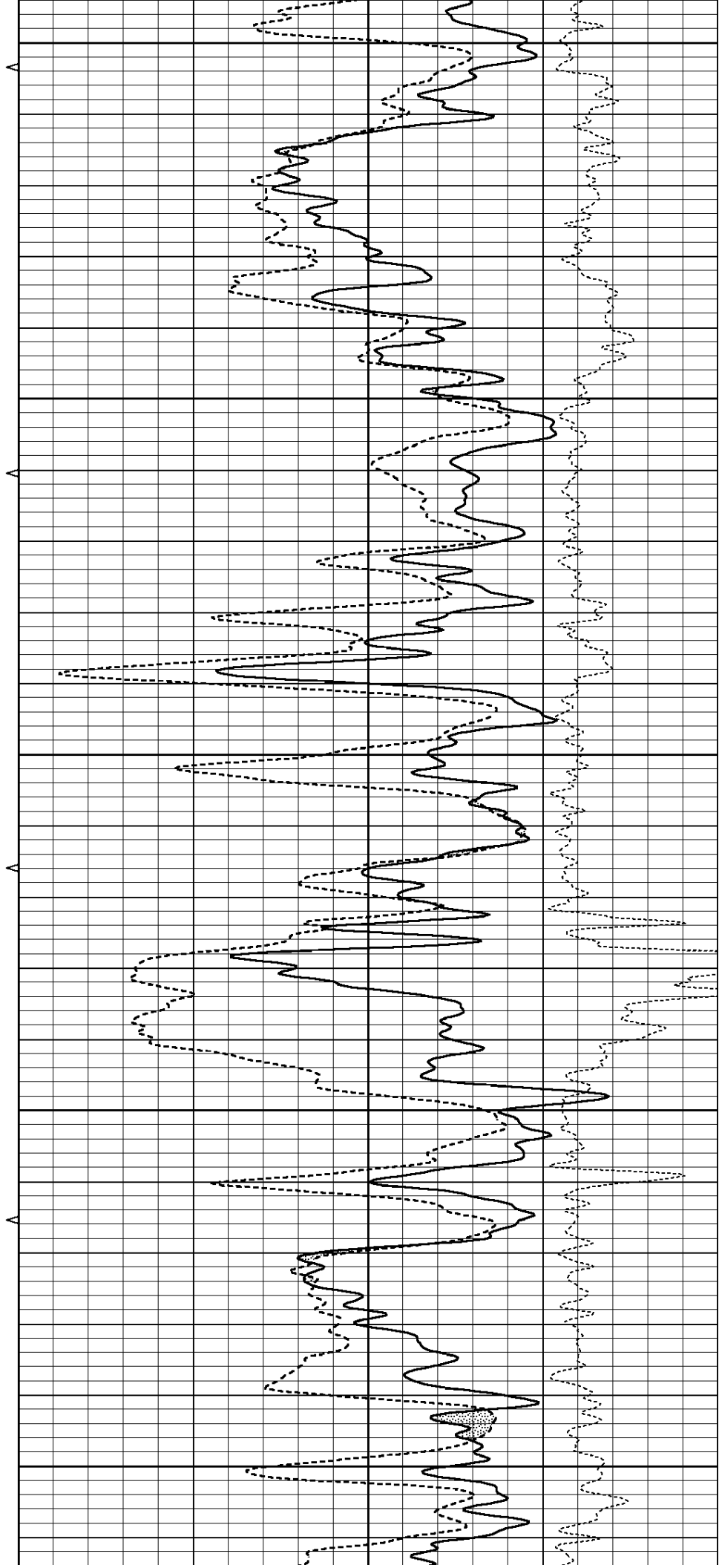
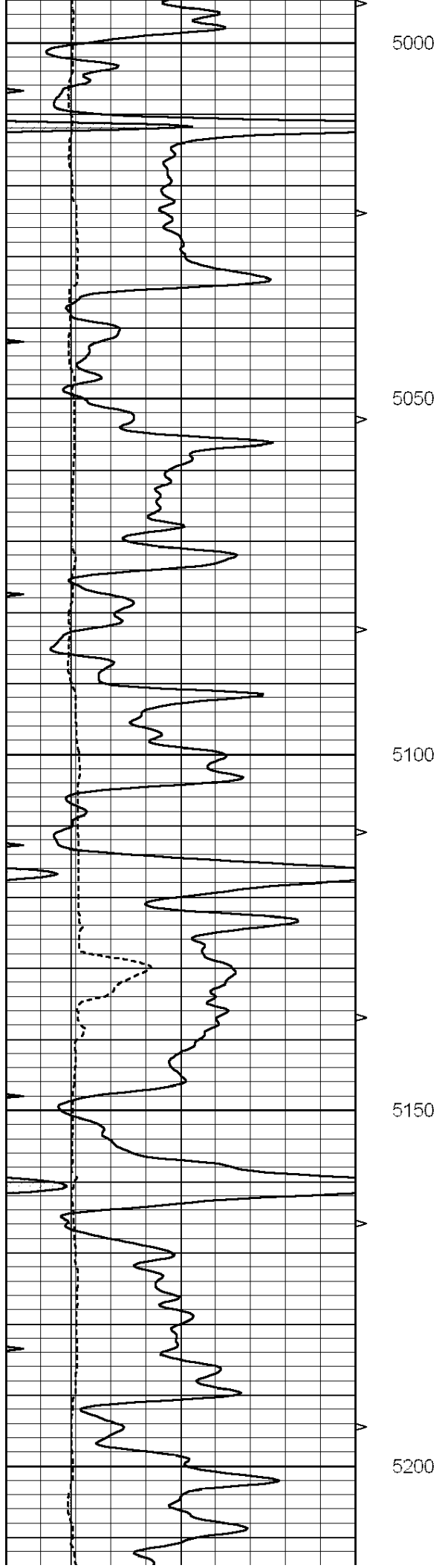
4800

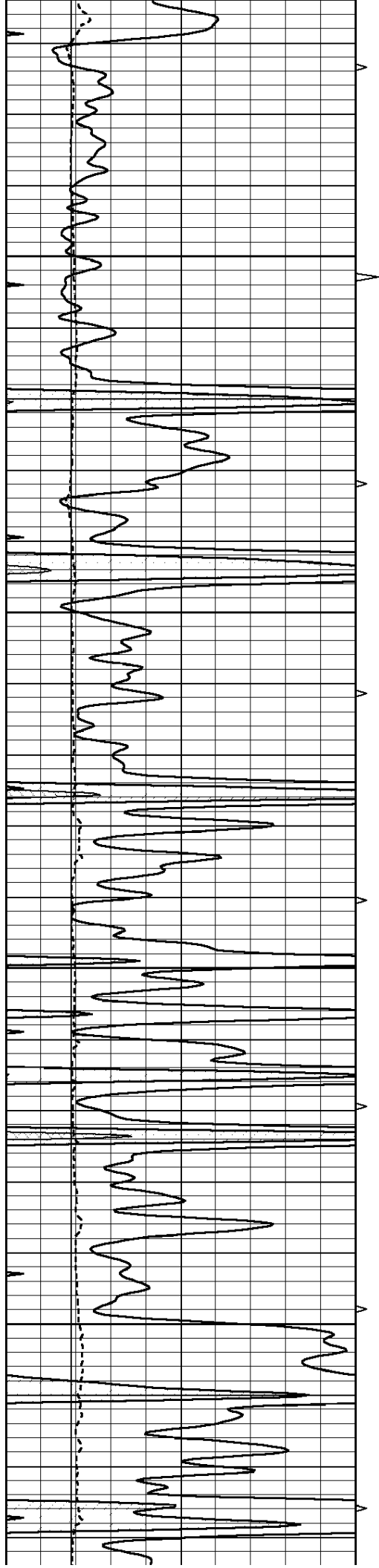
4850

4900

4950





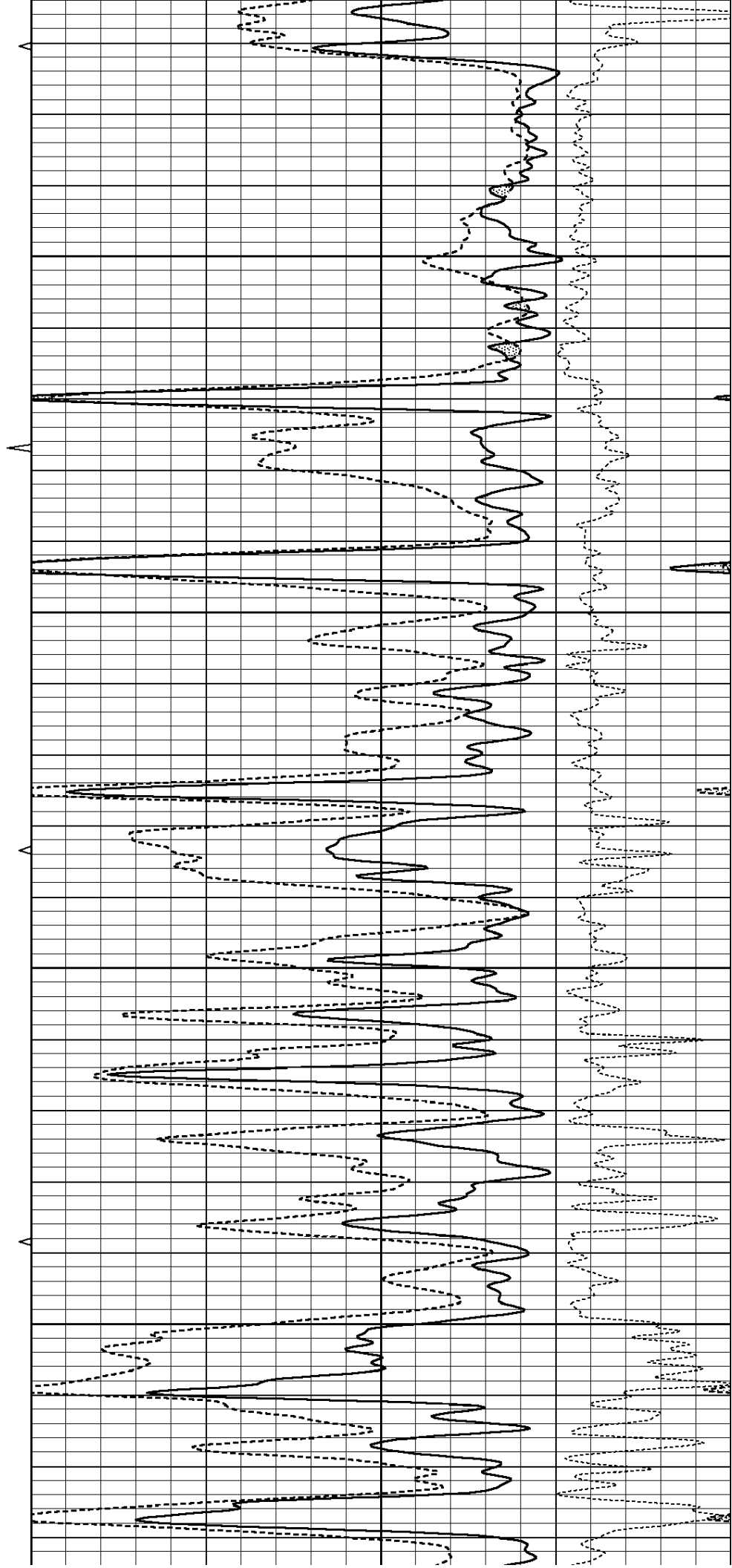


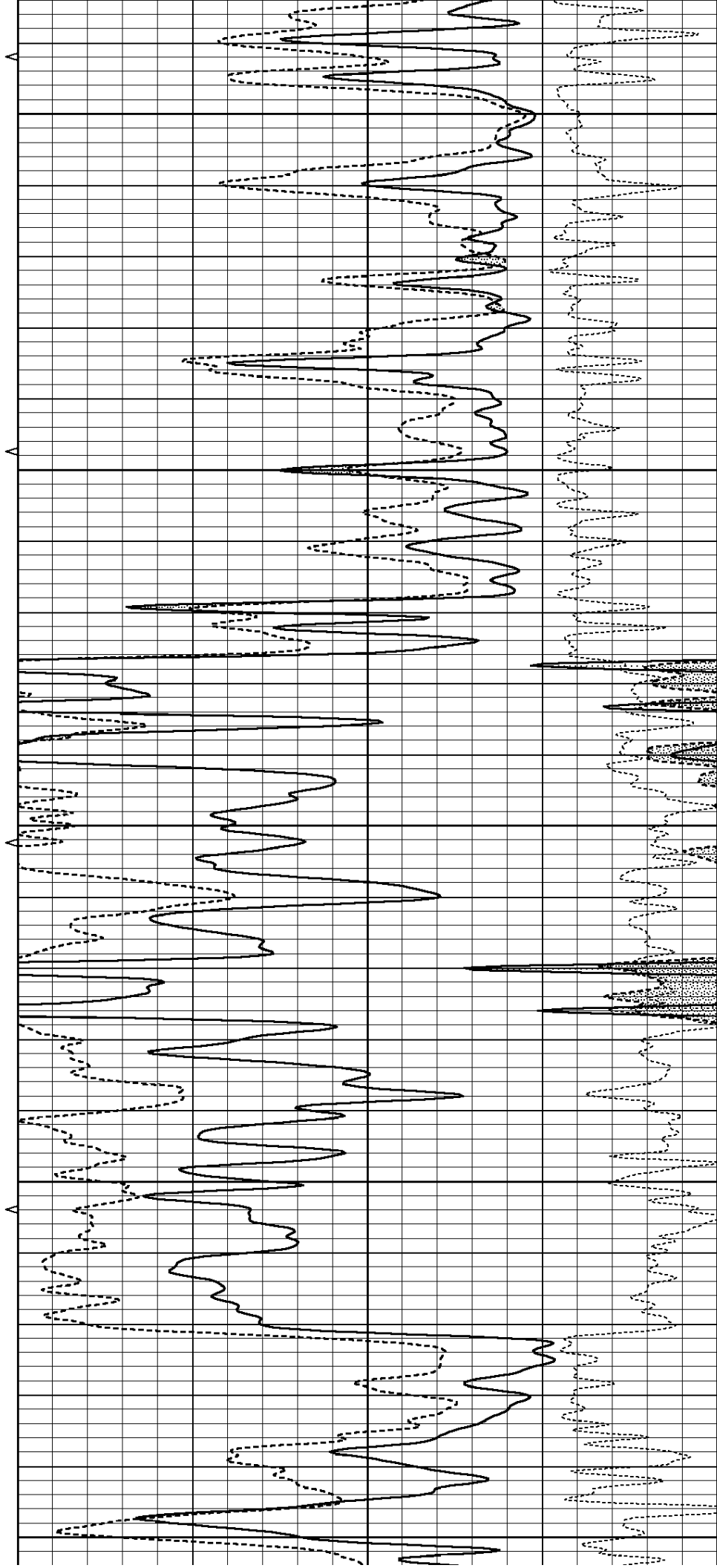
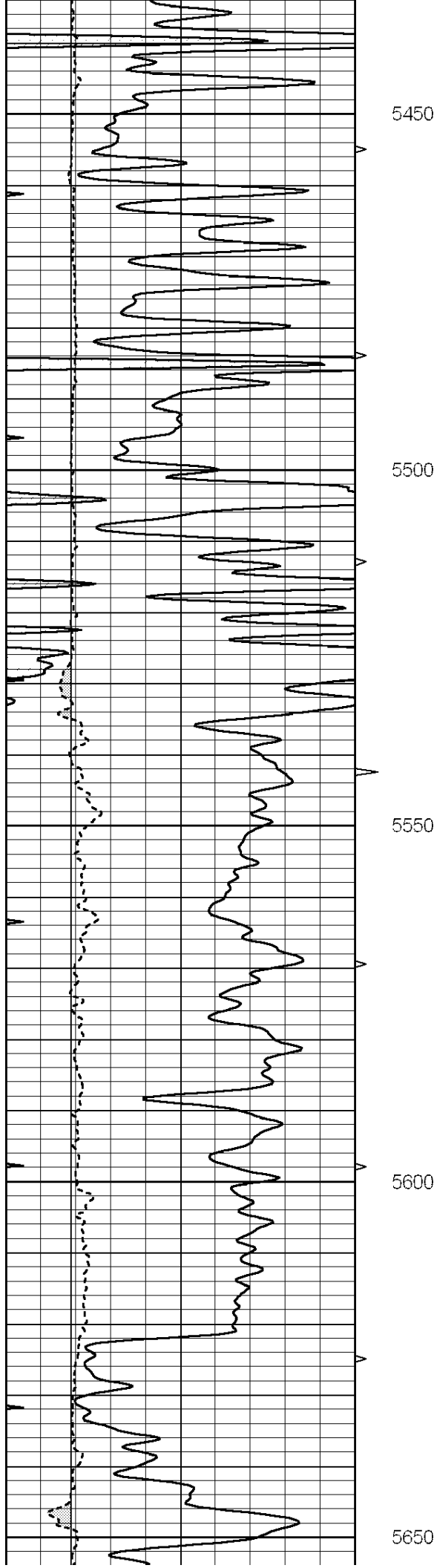
5250

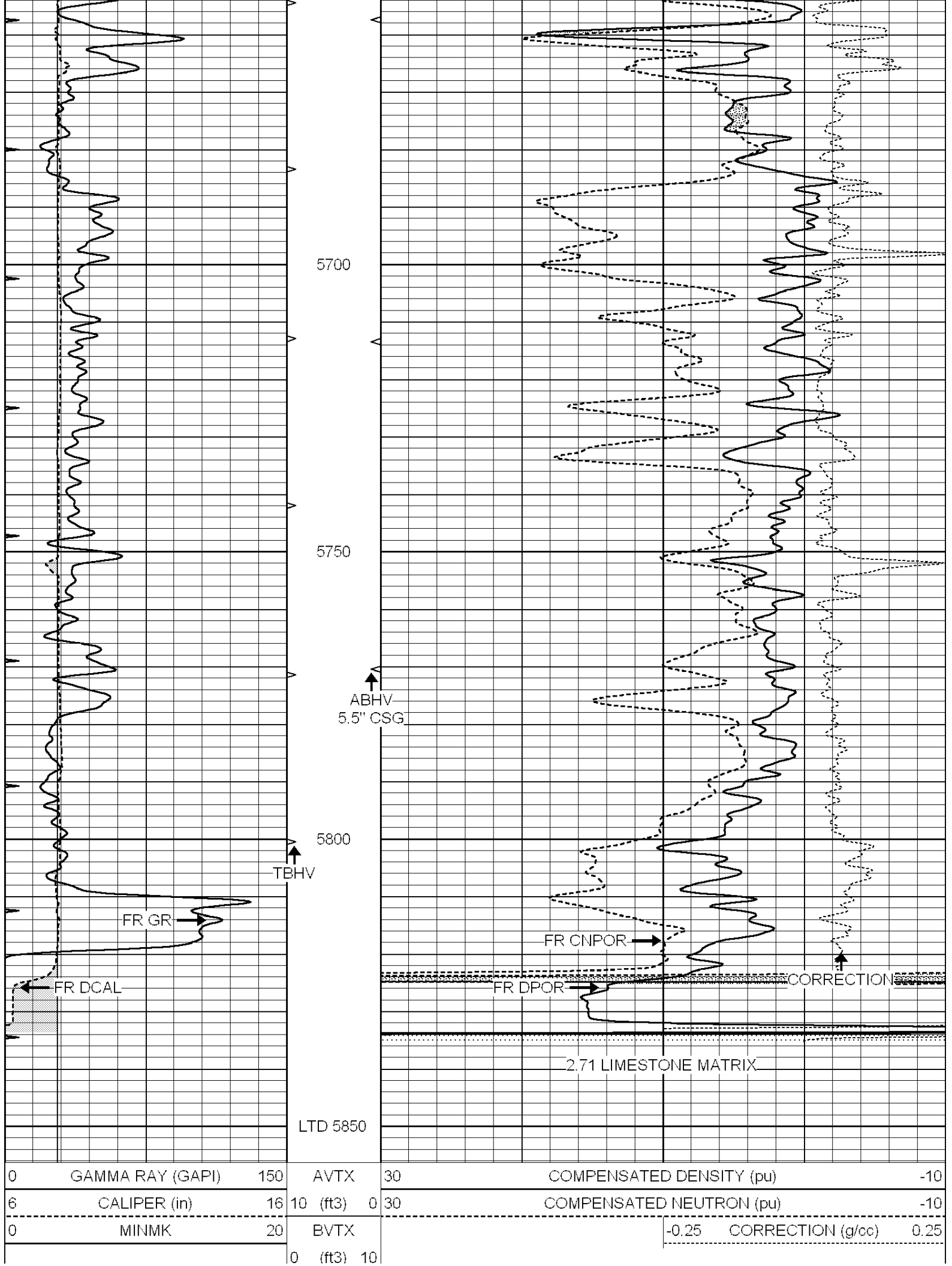
5300

5350

5400







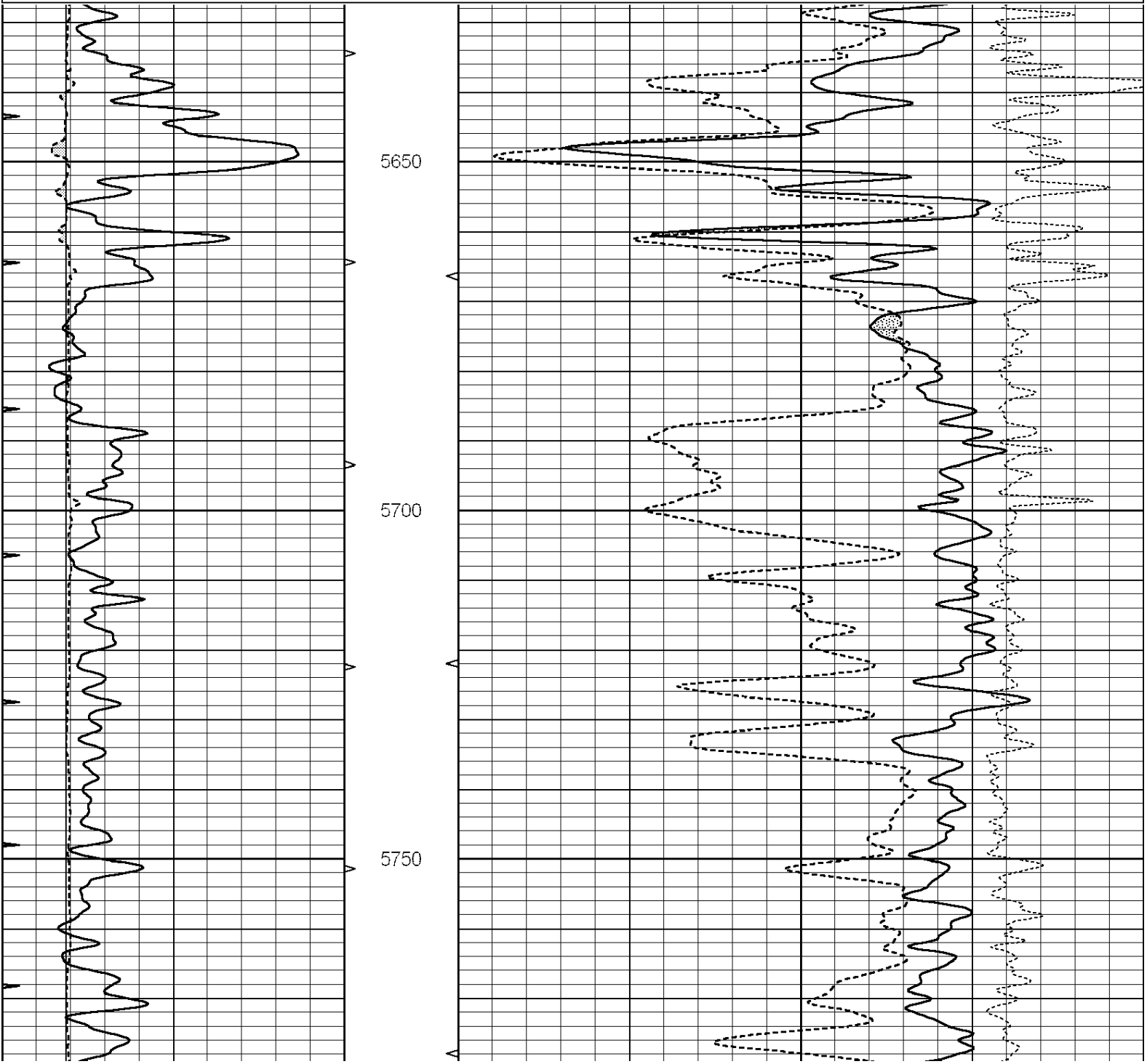


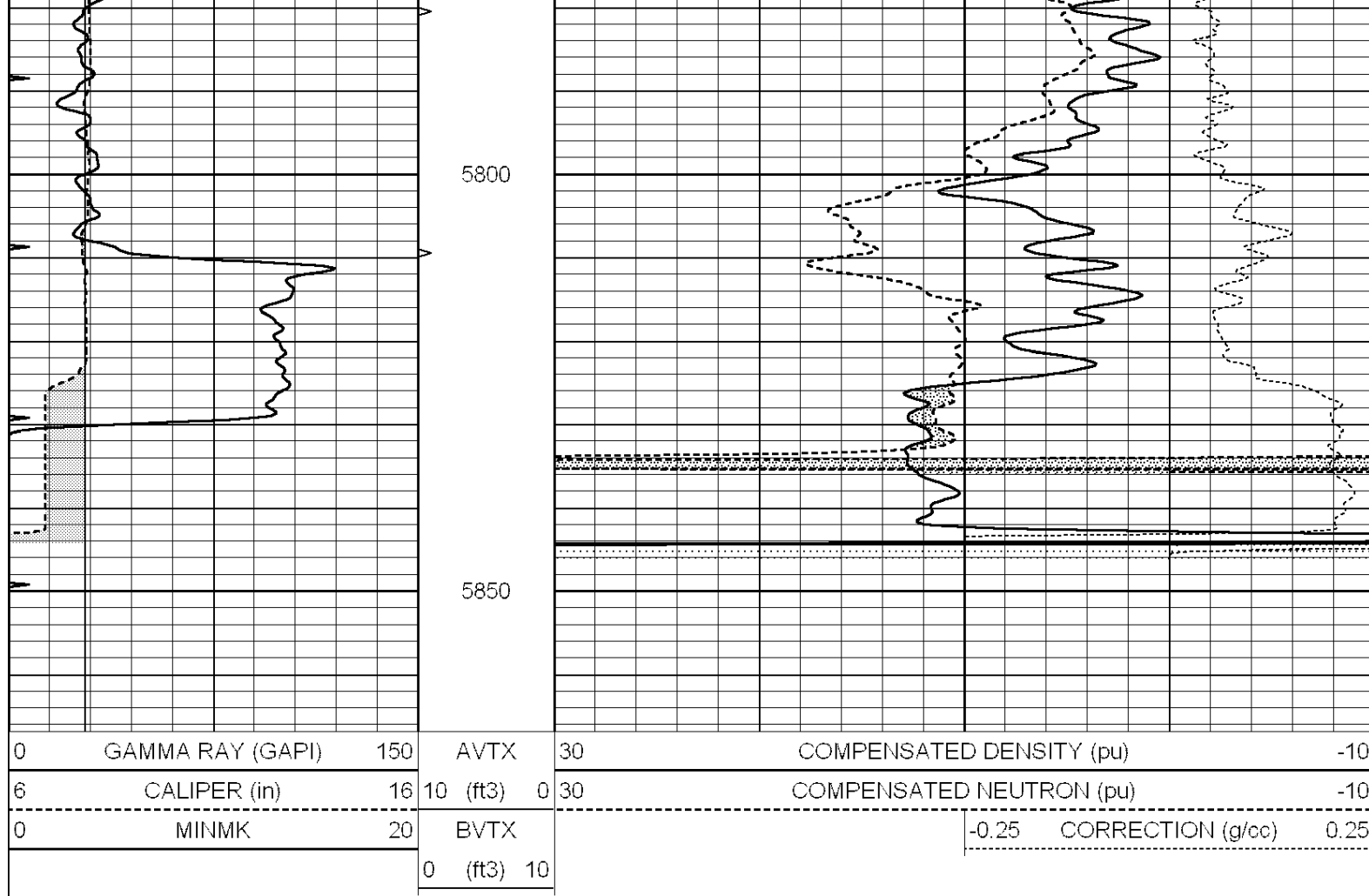
SUPERIOR
Hays,
Kansas

REPEAT SECTION

Database File: 009583ddn.db
Dataset Pathname: pass2.1
Presentation Format: _den_neu
Dataset Creation: Fri Aug 17 23:58:25 2012 by Calc Open-Cased 090629
Charted by: Depth in Feet scaled 1:240

0	GAMMA RAY (GAPI)	150	AVTX	30	COMPENSATED DENSITY (pu)	-10
6	CALIPER (in)	16	10 (ft3)	0 30	COMPENSATED NEUTRON (pu)	-10
0	MINMK	20	BVTX		-0.25 CORRECTION (g/cc)	0.25
			0 (ft3)	10		





Calibration Report

Database File: 009583ddn.db
 Dataset Pathname: pass3.3
 Dataset Creation: Sat Aug 18 00:11:07 2012 by Calc Open-Cased 090629

Dual Induction Calibration Report

Serial-Model: PROBE8-DILG
 Surface Cal Performed: Fri Aug 01 06:33:19 2008
 Downhole Cal Performed: Mon Jul 28 11:08:27 2008
 After Survey Verification Performed: Mon Jul 28 11:08:27 2008

Surface Calibration

Readings				References			Results	
Loop:	Air	Loop		Air	Loop		m	b
Deep	0.015	0.648	V	0.000	400.000	mmho/m	632.616	-9.730
Medium	0.029	0.796	V	0.000	464.000	mmho/m	605.049	-17.680
Internal:	Zero	Cal		Zero	Cal		m	b
Deep	0.017	0.657	V	0.000	400.000	mmho/m	625.153	-10.619
Medium	0.016	0.757	V	0.000	464.000	mmho/m	625.992	-9.739

Downhole Calibration

Readings				References			Results	
	Zero	Cal		Zero	Cal		m'	b'
Deep	0.000	0.000	mmho/m	2.011	405.777	mmho/m	1.000	0.000
Medium	0.000	0.000	mmho/m	7.590	503.393	mmho/m	1.000	0.000
LL3		7.500	V		1500.000	Ohm-m		

		0.000	V		20.000	Ohm-m		
		-7.200	V		3800.000	mmho-m		
After Survey Verification								
	Readings			Targets			Results	
	Zero	Cal		Zero	Cal		m'	b'
Deep	0.000	0.000	mmho/m	0.000	0.000	mmho/m	0.000	0.000
Medium	0.000	0.000	mmho/m	0.000	0.000	mmho/m	0.000	0.000
LL3		1.000	Ohm-m		1.000	Ohm-m		
		0.000	Ohm-m		0.000	Ohm-m		
		1.000	mmho-m		1.000	mmho-m		
Compensated Density Calibration Report								
Serial-Model:				GEAR4-GEARHART				
Source / Verifier:				143 / 143				
Master Calibration Performed:				Mon Mar 19 19:07:19 2012				
Master Calibration								
	Density			Far Detector		Near Detector		
Magnesium	1.710	g/cc		1015.91		497.51	cps	
Aluminum	2.600	g/cc		227.67		350.20	cps	
Spine Angle = 76.79				Density/Spine Ratio = 0.579				
	Size			Reading				
Small Ring	8.00	in		3.21	V			
Large Ring	14.00	in		5.46	V			
Compensated Neutron Calibration Report								
Serial Number:				6I				
Tool Model:				G				
CALIBRATION								
Detector		Readings		Target		Normalization		
Short Space		1.00	cps	1.00	cps	1.0000		
Long Space		1.00	cps	1.00	cps	1.0000		
Gamma Ray Calibration Report								
Serial Number:			#8					
Tool Model:			OPEN					
Performed:			Mon Jun 13 16:56:43 2011					
Calibrator Value:			150.0	GAPI				
Background Reading:			0.0	cps				
Calibrator Reading:			175.0	cps				
Sensitivity:			0.8371	GAPI/cps				