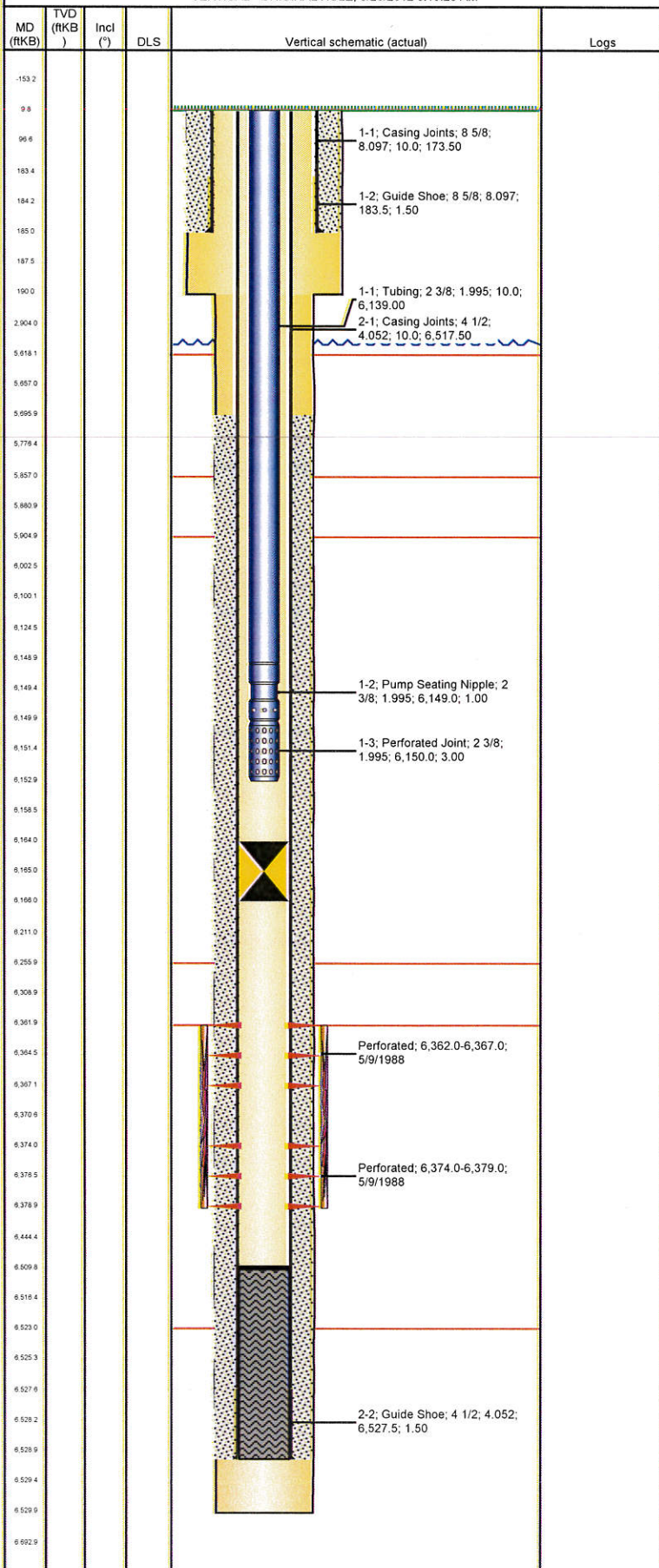


Well Name: LILLI UNIT 14-08

VERTICAL - ORIGINAL HOLE, 8/28/2012 8:10:28 AM



Well Header			
API 05-123-13930	Business Unit WATTENBERG	District 25	Well Config VERTICAL
Original KB Elevation (ft) 4,738.00	KB - GL / MSL (ftKB) 10.00	Spud Date 4/29/1988	P & A Date
Comment HOLES IN CASING FROM 4378'-4409'			
Directions To Well			
Surface Location (Congressional)			
Quarter 1 W2	Quarter 2 SE	Quarter 3 SW	Section 8
Township 8	Township N	Range 58	Rng E/W W
Bottom Hole Location			
North-South Distance (ft)	From N or S Line	East-West Distance (ft)	From E or W Line
Plug Back Total Depths			
Date 5/4/1988	Depth (ftKB) 6,510.0	Method CASING TALLY	Com
Wellbore Sections			
Section Des	Size (in)	Act Top (ftKB)	Act Btm (ftKB)
SURFACE	12 1/4	10.0	190.0
PRODUCTION	7 7/8	190.0	6,530.0
Zone Statuses			
Zone Name	Status Date	Status	Job
D SAND	8/16/1988	PR	DRILLING/COMPLETION - ORIGINAL, 4/29/1988 00:00
D SAND	4/6/2007	SI	OTHER, 4/2/2007 00:00
Casing Strings			
Surface, 185.0ftKB			
Casing Description Surface	Run Date 4/30/1988	OD (in) 8 5/8	Wt/Len (l...) 24.00
Grade J-55	Top (ftKB) 10.0	Set Depth...	185.0
Production, 6,529.0ftKB			
Casing Description Production	Run Date 5/4/1988	OD (in) 4 1/2	Wt/Len (l...) 10.50
Grade J-55	Top (ftKB) 10.0	Set Depth...	6,529.0
Cement			
Description SURFACE CASING CEMENT	Top Depth (ftKB) 10.0	Bottom Depth (ftKB) 185.0	
Description PRODUCTION CASING CEMENT	Top Depth (ftKB) 5,696.0	Bottom Depth (ftKB) 6,529.0	
Tubing Components			
Item Des	OD (in)	Wt (lb/ft)	Grade
Tubing	2 3/8	4.70	J-55
Pump Seating Nipple	2 3/8		
Perforated Joint	2 3/8		
Rods & Pumps			
Rod Description Rod	Run Date 4/9/2007	Set Depth (ftKB) 6,100.0	
Comment HOLES IN CASING FROM 4378'-4409'			
Item Description Sucker Rod	OD Nominal (in) 3/4	Joints 244	Length (ft) 6,090.00
Perforation Data			
Zone	Bnch/St g	Entered Shot Total	Top (ftKB)
D SAND, ORIGINAL HOLE		11	6,362.0
D SAND, ORIGINAL HOLE		11	6,374.0
Stimulations & Treatments			
Date 5/22/1988	Zone D SAND, ORIGINAL HOLE	Primary Job Type DRILLING/COMPLETION - ORIGINAL	
Technical Result	Tech Result Details	Tech Result Note	
Comment			
Other In Hole			
Run Date 4/6/2007	Des Bridge Plug - Temporary	OD (in) 4	Top (ftKB) 6,164.0
Logs			
Date 5/3/1988	Type COMPENSATED DENSITY	Top (ftKB) 5,500.0	Btm (ftKB) 6,504.0

Well Name: LILLI UNIT 14-08

VERTICAL - ORIGINAL HOLE, 8/28/2012 8:10:29 AM

Logs

Date	Type	Top (ftKB)	Btm (ftKB)
5/3/1988	INDUCTION	185.0	6,522.0
5/9/1988	CEMENT BOND	5,611.0	6,494.0

