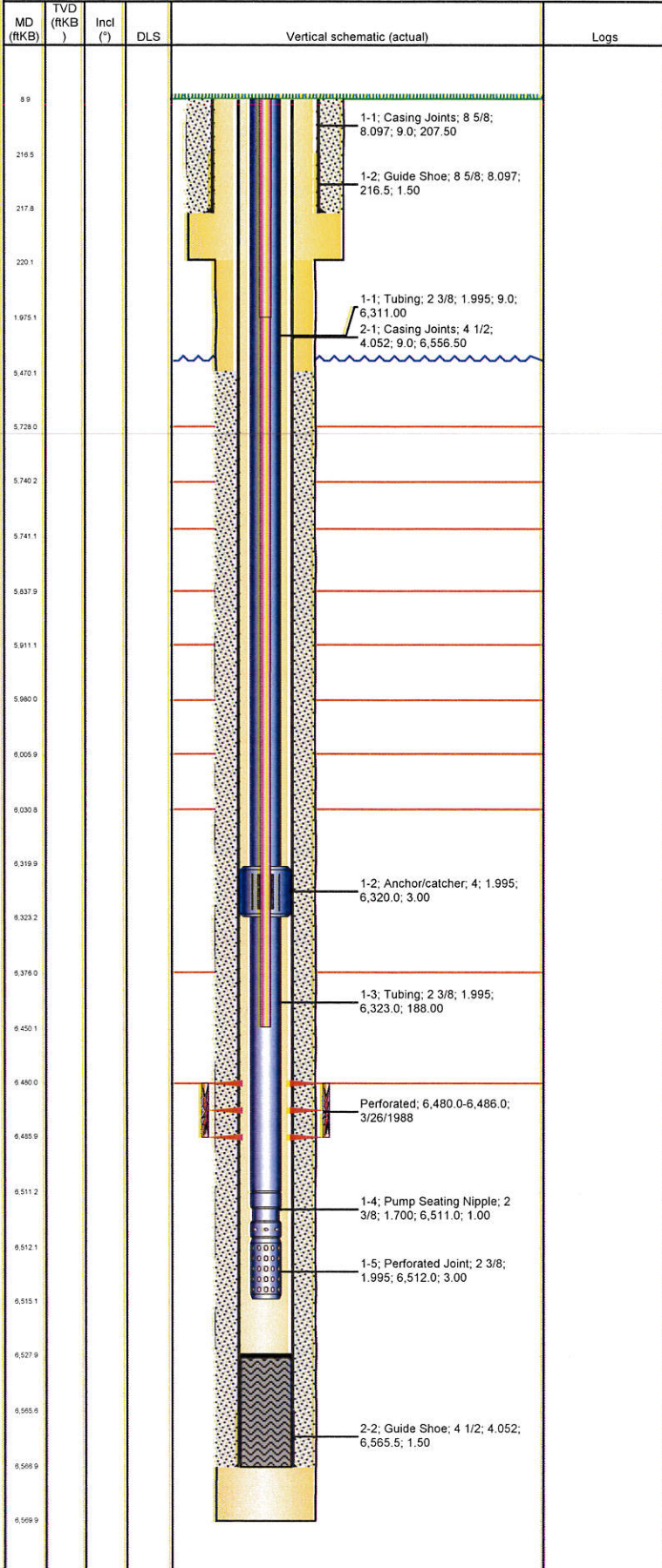


Well Name: LILLI UNIT 12-12

VERTICAL - ORIGINAL HOLE, 8/28/2012 8:09:50 AM

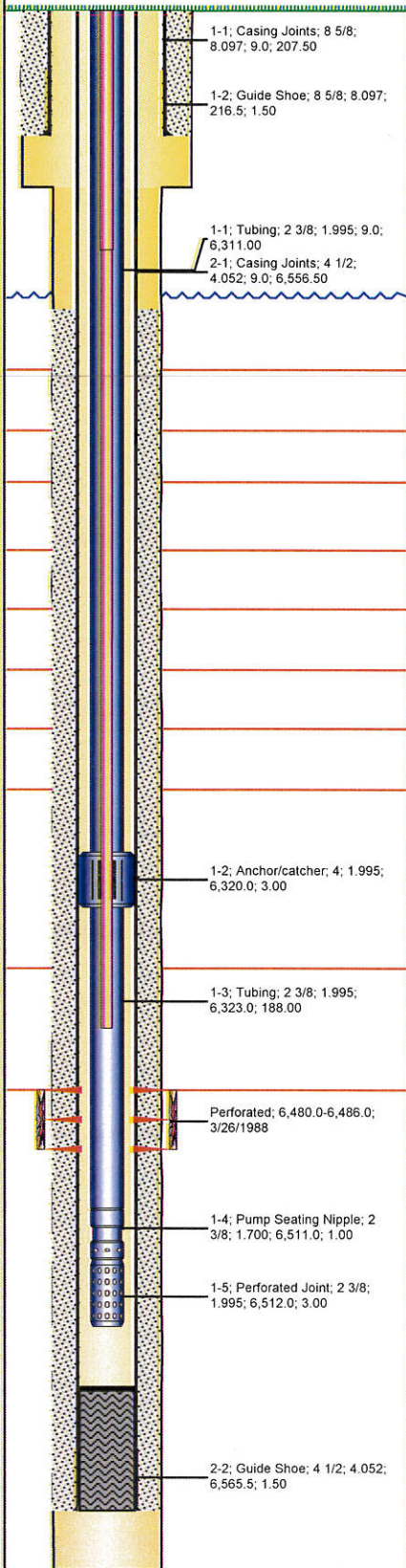


Well Header			
API	Business Unit	District	Well Config
05-123-13888	WATTENBERG	25	VERTICAL
Original KB Elevation (ft)	KB - GL / MSL (ftKB)	Spud Date	P & A Date
4,755.00	9.00	3/15/1988	
Comment			
Directions To Well			
Surface Location (Congressional)			
Quarter 1	Quarter 2	Quarter 3	Quarter 4
		NW	SW
Section	Township	Twship...	Range
12	8	N	59
Bottom Hole Location			
North-South Distance (ft)	From N or S Line	East-West Distance (ft)	From E or W Line
Plug Back Total Depths			
Date	Depth (ftKB)	Method	Com
3/20/1988	6,528.0	CASING TALLY	
Wellbore Sections			
Section Des	Size (in)	Act Top (ftKB)	Act Btm (ftKB)
SURFACE	12 1/4	9.0	220.0
PRODUCTION	7 7/8	220.0	6,570.0
Zone Statuses			
Zone Name	Status Date	Status	Job
D SAND	4/6/1988	PR	DRILLING/COMPLETION - ORIGINAL, 3/15/1988 00:00
D SAND	6/15/2008	SI	OTHER, 6/15/2008 00:00
Casing Strings			
Surface, 218.0ftKB			
Casing Description	Run Date	OD (in)	Wt/Len (l...)
Surface	3/16/1988	8 5/8	24.00
Grade	Top (ftKB)	Set Depth...	
	9.0	218.0	
Production, 6,567.0ftKB			
Casing Description	Run Date	OD (in)	Wt/Len (l...)
Production	3/20/1988	4 1/2	10.50
Grade	Top (ftKB)	Set Depth...	
J-55	9.0	6,567.0	
Cement			
Description	Top Depth (ftKB)	Bottom Depth (ftKB)	
SURFACE CASING CEMENT	9.0	218.0	
Description	Top Depth (ftKB)	Bottom Depth (ftKB)	
PRODUCTION CASING CEMENT	5,470.0	6,567.0	
Tubing Components			
Item Des	OD (in)	Wt (lb/ft)	Grade
Tubing	2 3/8	4.70	J-55
Anchor/catcher	4		
Tubing	2 3/8	4.70	J-55
Pump Seating Nipple	2 3/8		
Perforated Joint	2 3/8		
Jts	Len (ft)	Btm (ftKB)	Btm (TVD) (ftKB)
196	6,311.00	6,320.0	
1	3.00	6,323.0	
6	188.00	6,511.0	
1	1.00	6,512.0	
1	3.00	6,515.0	
Rods & Pumps			
Rod Description	Run Date	Set Depth (ftKB)	
Rod	6/15/2008	6,450.0	
Comment			
Item Description	OD Nominal (in)	Joints	Length (ft)
Sucker Rod	7/8	79	1,966.00
Item Description	OD Nominal (in)	Joints	Length (ft)
Sucker Rod	3/4	179	4,475.00
Perforation Data			
Zone	Bnch/St g	Entered Shot Total	Top (ftKB)
D SAND, ORIGINAL HOLE		25	6,480.0
			6,486.0
			3/26/1988
Stimulations & Treatments			
Date	Zone	Primary Job Type	
3/30/1988	D SAND, ORIGINAL HOLE	DRILLING/COMPLETION - ORIGINAL	
Technical Result	Tech Result Details	Tech Result Note	
Comment			
Other In Hole			
Run Date	Des	OD (in)	Top (ftKB)
			Btm (ftKB)

Well Name: LILLI UNIT 12-12

VERTICAL - ORIGINAL HOLE, 8/28/2012 8:09:50 AM

Logs

MD (ftKB)	TVD (ftKB)	Incl (°)	DLS	Vertical schematic (actual)	Logs	Date	Type	Top (ftKB)	Btm (ftKB)
						3/19/1988	COMPENSATED DENSITY	5,590.0	6,552.0
						3/19/1988	INDUCTION	218.0	6,569.0
8.9				 <p>1-1: Casing Joints; 8 5/8; 8.097; 9.0; 207.50</p> <p>1-2: Guide Shoe; 8 5/8; 8.097; 216.5; 1.50</p> <p>1-1: Tubing; 2 3/8; 1.995; 9.0; 6,311.00</p> <p>2-1: Casing Joints; 4 1/2; 4.052; 9.0; 6,556.50</p> <p>1-2: Anchor/catcher; 4; 1.995; 6,320.0; 3.00</p> <p>1-3: Tubing; 2 3/8; 1.995; 6,323.0; 188.00</p> <p>Perforated; 6,480.0-6,486.0; 3/26/1988</p> <p>1-4: Pump Seating Nipple; 2 3/8; 1.700; 6,511.0; 1.00</p> <p>1-5: Perforated Joint; 2 3/8; 1.995; 6,512.0; 3.00</p> <p>2-2: Guide Shoe; 4 1/2; 4.052; 6,565.5; 1.50</p>					
216.5									
217.8									
220.1									
1,975.1									
5,470.1									
5,728.0									
5,740.2									
5,741.1									
5,537.9									
5,911.1									
5,980.0									
6,005.9									
6,030.8									
6,319.9									
6,323.2									
6,376.0									
6,450.1									
6,480.0									
6,485.9									
6,511.2									
6,512.1									
6,515.1									
6,527.9									
6,565.6									
6,568.9									
6,569.9									