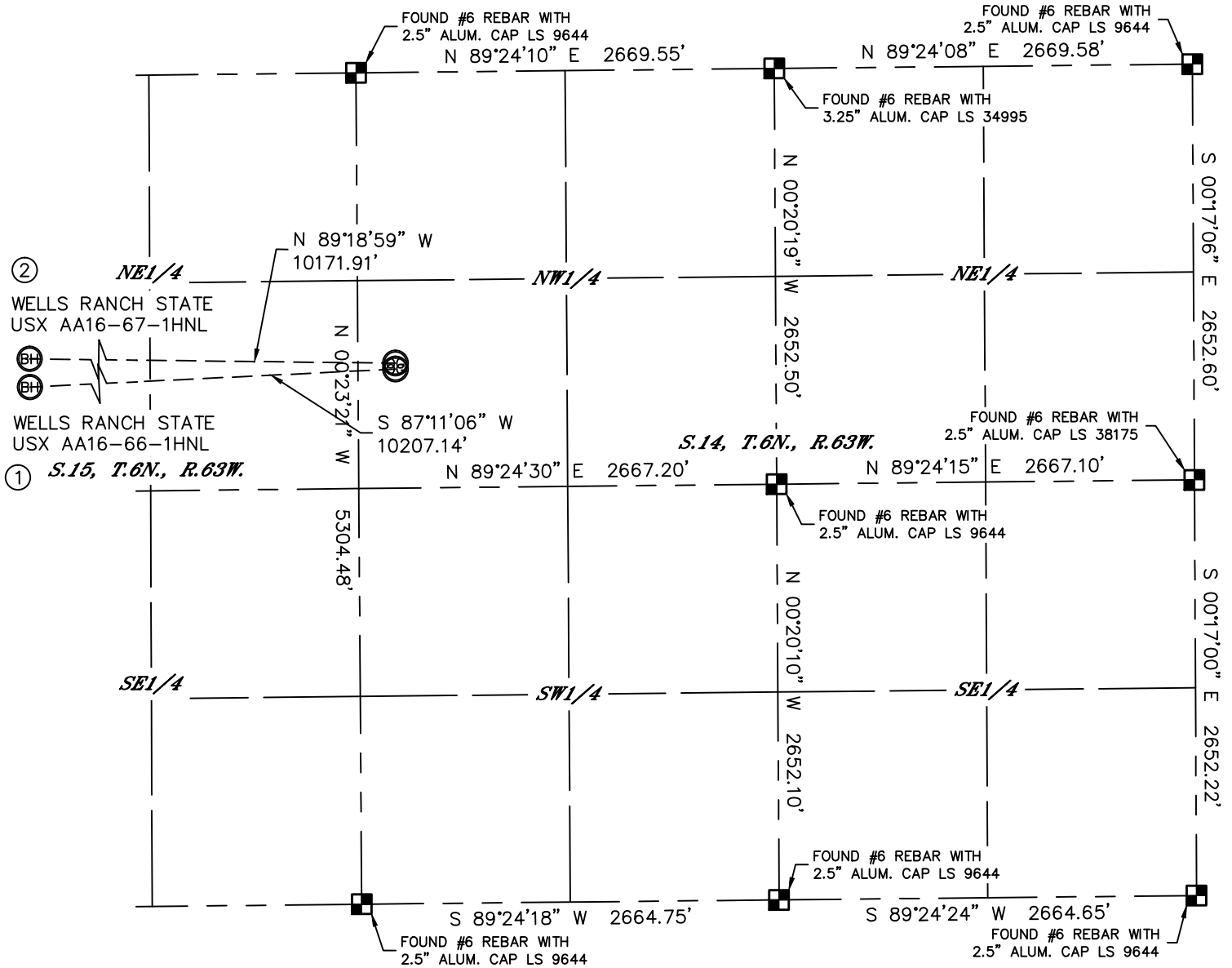


MULTI-WELL PLAN

WELLS RANCH STATE USX AA16-66-1HNL PAD

THIS MAP DOES NOT REPRESENT A BOUNDARY SURVEY

SECTION: 14
TOWNSHIP: 6N
RANGE: 63W



- ②
WELLS RANCH STATE
USX AA16-67-1HNL
- ①
WELLS RANCH STATE
USX AA16-66-1HNL
S.15, T.6N., R.63W.

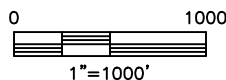
S.14, T.6N., R.63W.

①
-BOTTOM HOLE-
WELLS RANCH STATE
USX AA16-66-1HNL
2310' FNL
535' FWL
LAT: 40.48764°N
LONG: 104.44923°W

②
-BOTTOM HOLE-
WELLS RANCH STATE
USX AA16-67-1HNL
1650' FNL
535' FWL
LAT: 40.48945°N
LONG: 104.44912°W

LEGEND

- = ALIQUOT MONUMENT AS DESCRIBED
- = CALCULATED POSITION



SHEET 1 OF 3

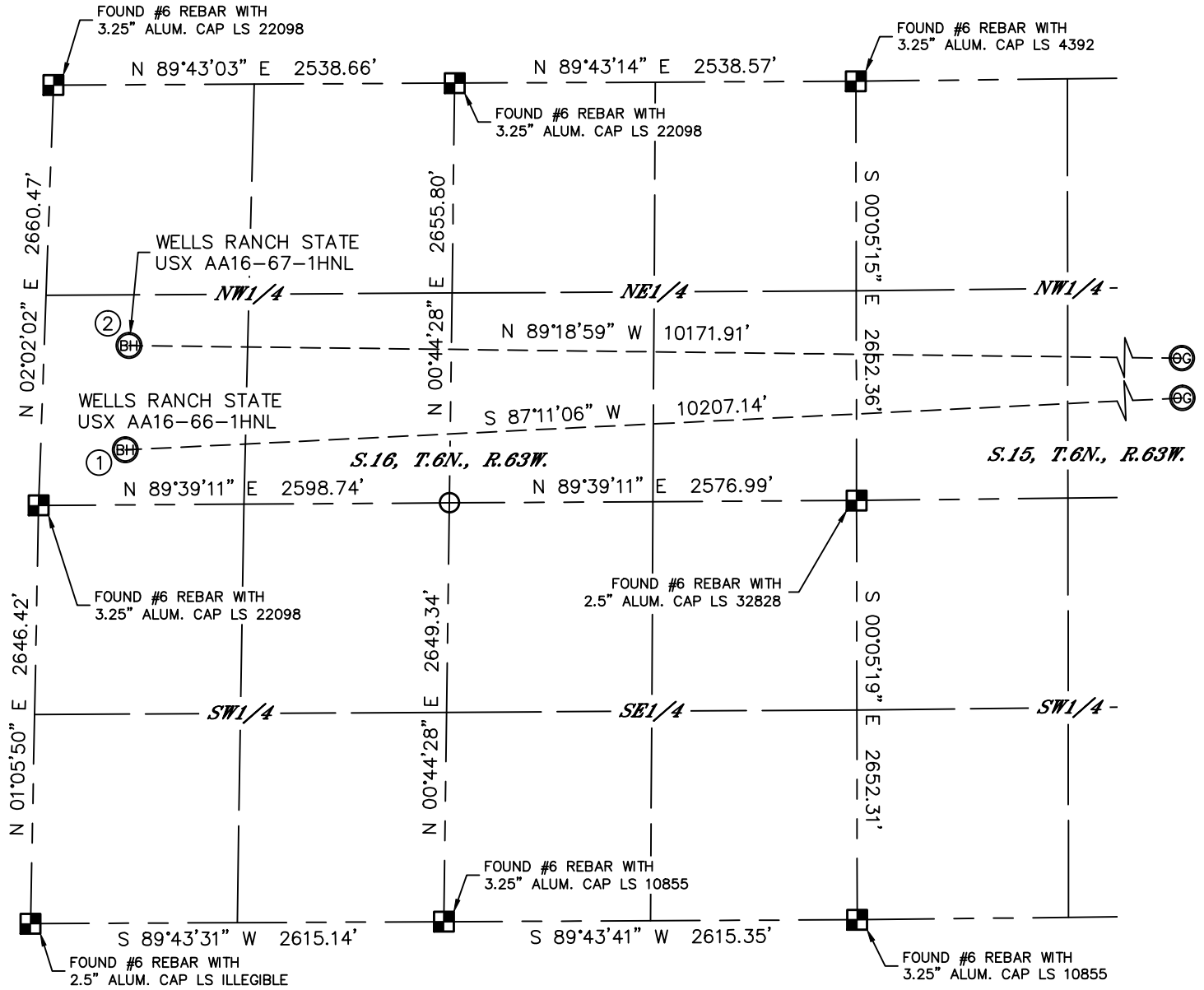
DATE: rev 8/27/2012
PROJECT#: 2012075

MULTI-WELL PLAN

WELLS RANCH STATE USX AA16-66-1HNL PAD

THIS MAP DOES NOT REPRESENT A BOUNDARY SURVEY

SECTION: 14
TOWNSHIP: 6N
RANGE: 63W



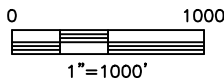
①
-BOTTOM HOLE-
WELLS RANCH STATE
USX AA16-66-1HNL
2310' FNL
535' FWL
LAT: 40.48764°N
LONG: 104.44923°W

②
-BOTTOM HOLE-
WELLS RANCH STATE
USX AA16-67-1HNL
1650' FNL
535' FWL
LAT: 40.48945°N
LONG: 104.44912°W



LEGEND

- = ALIQUOT MONUMENT AS DESCRIBED
- = CALCULATED POSITION



SHEET 2 OF 3

DATE: rev 8/27/2012
PROJECT#: 2012075

MULTI-WELL PLAN

WELLS RANCH STATE USX AA16-66-1HNL PAD

SECTION: 14
TOWNSHIP: 6N
RANGE: 63W



0 200
1"=200'

SHEET 3 OF 3

DATE: rev 8/27/2012
PROJECT#: 2012075