

Job: 12099 Knoss 6-21

~ACCESS ROAD MAP~

Inv # 1960

High Prairie Surveying of Kiowa, Colorado has in accordance with a request from Chuck Wilson, Nighthawk Production LLC has determined the location of Knoss 6-21 to be 1402 feet FNL, and 1686 feet FWL, (90° off Section lines) of SECTION 21, Township 12s, Range 56w of the 6th Principal Meridian, Lincoln County, Colorado.

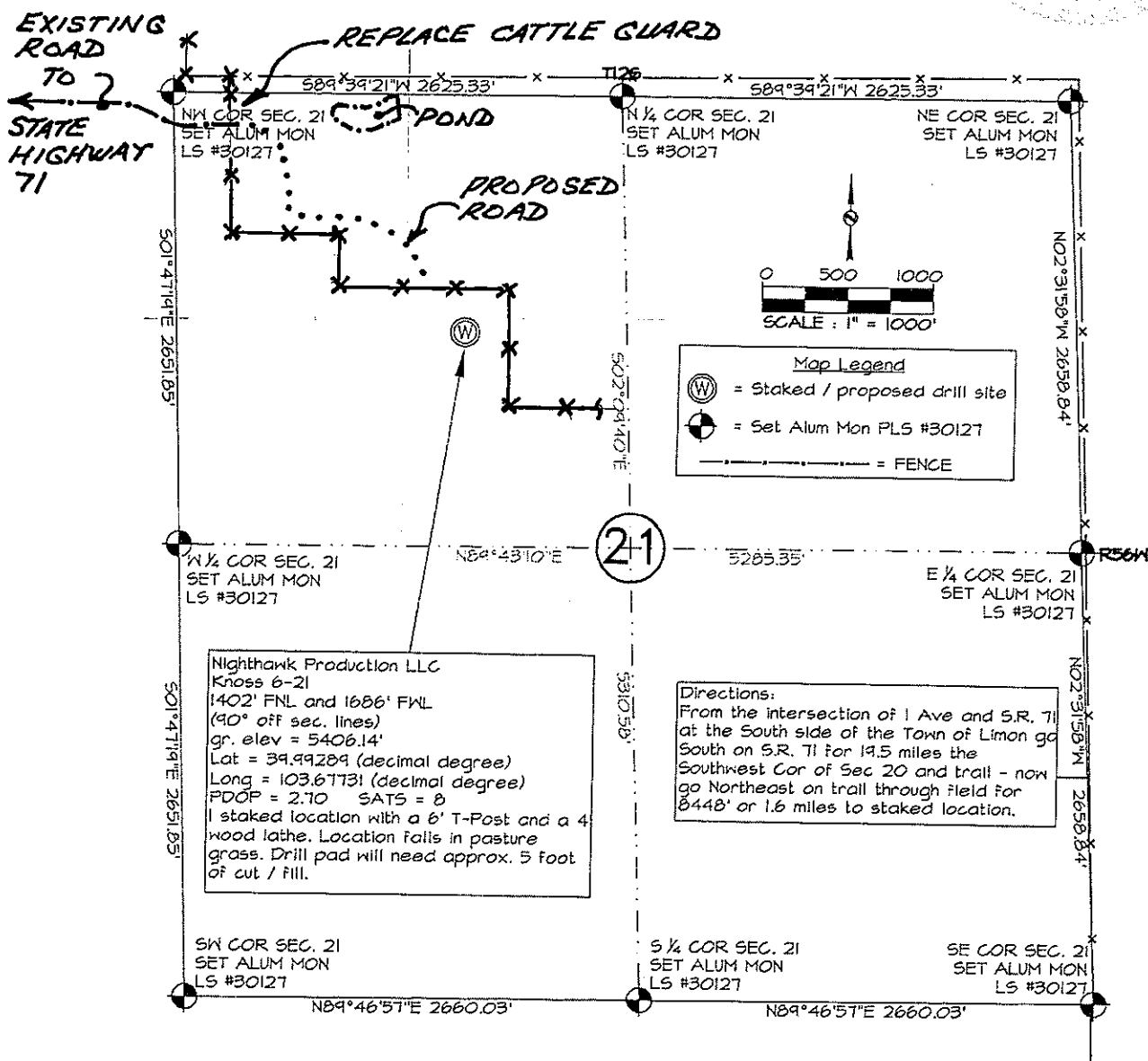
Date: Staked on 5-31-12 drawn on 6-6-12.

Re: Staked by Keith Westfall
Drawn: Drawn by Elijah Frane

Basis of Elevation Spot: USGS BM = V 81, PID = KJ0265, H-Order = Unknown, V-Order = Second, Stability = C, P-DOP = 2.7, Sats = 8, US NAD 83 CO-C, Lat. = 39.07052, Long. = W103.70368, Elevation = 5508.92 m (US FT)

Notes: There are no improvements within 400' of proposed well pad.
The ground elevation at staked location = 5406.14' gr.
This drawing does not represent a monumented survey or Land Survey Plat.

Basis of Bearing: Bearings were determined based on the North line of Section 21 to bear S 89°39'21" W with all other bearings contained herein relative thereto.



NOTE: KERRY HALDE WILL BE GRADING ROAD & DRILL SITE. HE WILL CONTACT FRED POSS (SURFACE OWNER) & MEET WITH HIM AT WELL LOCATION, IN PERSON, BEFORE COMMENCING WITH ANY WORK.