

Downhole Schematic for MELBON RANCH 2-4-17



Project :DJ Basin

API # :05123345870000

Surface Location : NWSW Sec 17 T2N - R65W 6th F

Area : Wattenberg

County :

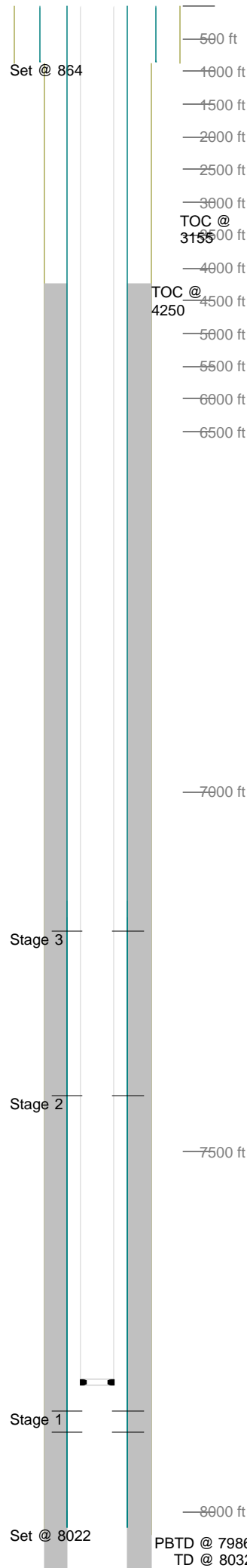
BHL :

As Of : 07/10/2012

GL : 4940.0 ft

KB to GL : 12.0 ft

KB : 4952.0 ft



Casing Details									
Section	Hole	Casing	Mass	Set At	Length	Thread	Grade	Description	
Surface	12.250		0	864	1	ST&C		GS	
		8.625	24	863	40	ST&C	J55	SJ/BAFFLE	
		8.625	24	823	811	ST&C	J55	CSG	
		8.625	24	12	12	ST&C		LJ	
Production	7.875		0	8,022	1	LT&C		Guide Shoe	
		4.5	11.6	8,021	21	LT&C	SB-80	Shoe Jt	
			0	8,000	1	LT&C		Float Collar	
		4.5	11.5	7,998	824	LT&C	SB-80	Casing	
		4.5	11.5	7,174	22	LT&C	SB-80	Marker Joint	
		4.5	11.5	7,152	7,153	LT&C	SB-80	Casing	
		4.5	11.5	-1	12	LT&C	SB-80	Landing Jt	
Cement Details									
Section	Sequence	Top	Density	Blend / Additives					
Surface Production		0	0.0	/					
		0	0.0	/					
	Lead	4,250	12.5	Premium Lite Cement / + 0.25 lbs/sack Cello Flake +0.7% FL-52 + 6% Bentonite + 0.2% CD-32 + 3 lbs/sack CSE-2 + 0.2% ASA-301 @ 12.5 PPG					
	Tail	6,650	13.5	(50:50) Poz G Cement / + 0.25 lbs/sack Cello Flake + 0.6% FL-52 + 3% Bentonite + 0.1% SMS + 20% S-8 @ 13.5 PPG					
Tubing and Downhole Equipment									
O.D.	Length	Depth	Description						
0.000	12.00	12.00	KB						
0.000	0.50	12.50	Hanger						
2.375	7,804.53	7,817.03	240 jts of new 2-3/8 J-55 EUE 4.7#, 8rd tbgr,						
2.375	1.10	7,818.13	Seat nipple						
0.000	10.08	7,828.21	2-3/8 J-55 pup jt						
0.000	0.64	7,828.85	Re-entry guide						
Perforations									
Stage	Date	From	To	Shots	Stage	Date	From	To	Shots
1	05/23/2012	7,890	7,902	24	3	05/30/2012	7,423	7,437	42
		7,860	7,872	24					
2						06/01/2012	7,194	7,206	48
Frac Summary									
Stage 1 : 7,860 - 7,902, 48 - 0.420" shots, 156834 bbls of Hybrid pHaserFrac, 248300 lbs of 20/40 Sand									
Report Date: 05/30/2012									
Stage 2 : 7,423 - 7,437, 42 - 0.420" shots, 2653 bbls of Hybrid pHaserFrac, 252600 lbs of 30/50 Sand									
Report Date: 05/31/2012									
Stage 3 : 7,194 - 7,206, 48 - 0.550" shots, 3169 bbls of Hybrid pHaserFrac, 249080 lbs of 30/50 Sand									
Report Date: 05/31/2012									
Bridge Plug Details									
Depth	Date Set	Plug Type	Sacks Cement						
7,490.0	05/30/2012	CFP	0						
7,256.0	05/31/2012	CFP	0						
7,140.0	07/09/2012	CBP	0						
CFP at 7,490.0 drilled out 07/10/2012									
CFP at 7,256.0 drilled out 07/10/2012									
CBP at 7,140.0 drilled out 07/10/2012									