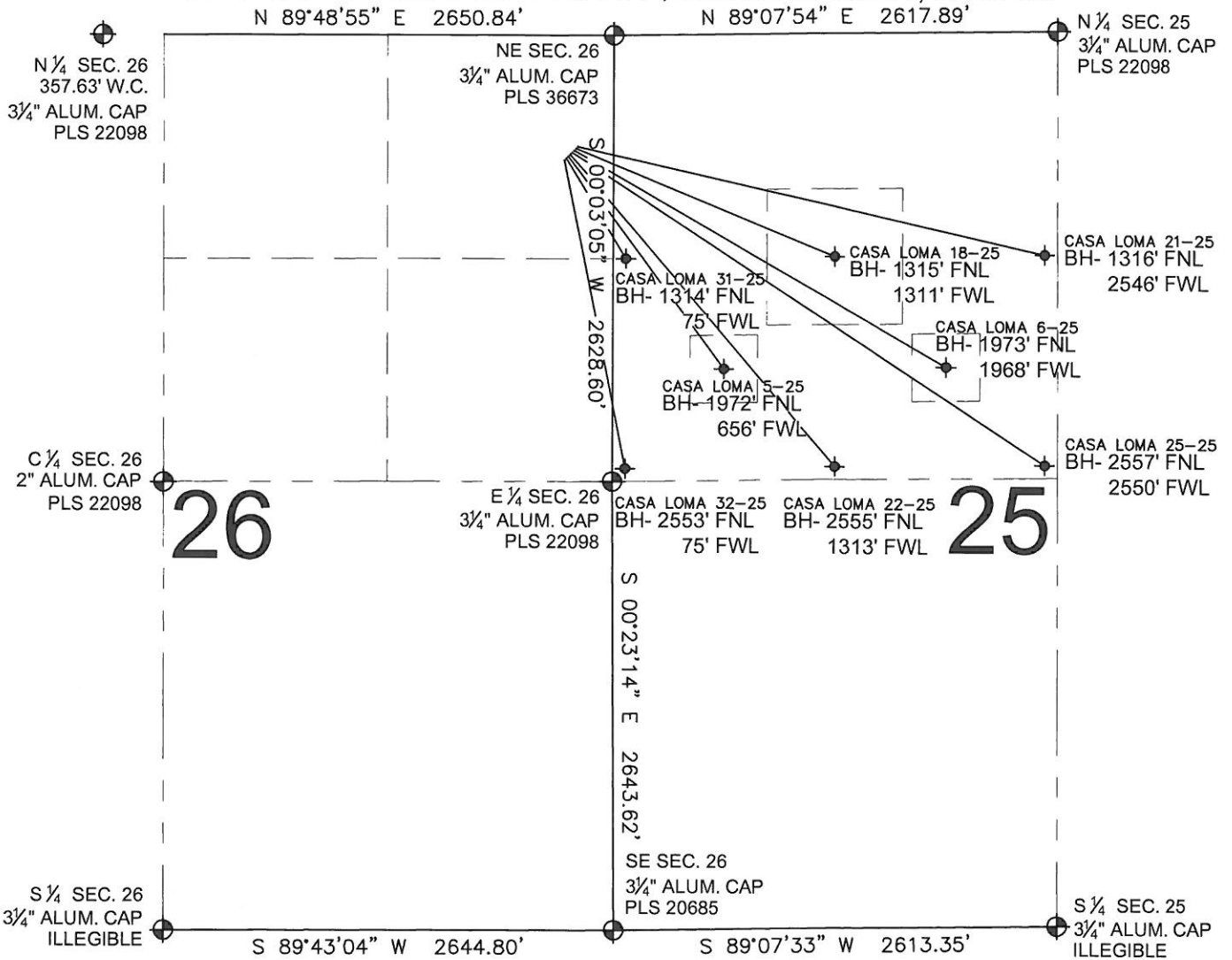


PAD DRAWING: CASA LOMA 8 PAD

SECTION 26, TOWNSHIP 7 NORTH, RANGE 67 WEST, 6TH P.M.



LEGEND

- = EXISTING MONUMENT
 = BOTTOM HOLE
 BH= BOTTOM HOLE
 = PROPOSED WELL
 = EXISTING WELL

NOTES:

- THIS FIELD SURVEY CONFORMS TO THE MINIMUM STANDARDS SET BY THE C.O.G.C.C., RULE NO. 215
- HORIZONTAL POSITIONS AND ORTHOMETRIC ELEVATIONS SHOWN AT THE WELL HEAD, ARE BASED ON GPS-RTK POSITIONS DERIVED FROM MINIMUM 2-HOUR STATIC OBSERVATIONS CORRECTED BY THE NATIONAL GEODETIC SURVEY ONLINE POSITIONING USER SERVICE, O.P.U.S. DATUM: HORIZONTAL = NAD83/2007, VERTICAL = NAVD88
- THE BASIS OF BEARINGS ARE STATE PLANE COORDINATE SYSTEM GRID BEARINGS SHOWN HEREON BETWEEN THE DESCRIBED THE MONUMENTS SHOWN HEREON.
- GRID DISTANCES ARE SHOWN, AS MEASURED IN THE FIELD, WITH TIES TO WELLS MEASURED PERPENDICULAR TO SECTION LINES.

NOTES:

CASA LOMA 32-25 TO BE AT 735' FNL, 288' FEL.
 BOTTOM HOLE AT 2553' FNL & 75' FWL.
 CASA LOMA 31-25 TO BE AT 724' FNL, 277' FEL.
 BOTTOM HOLE AT 1314' FNL & 75' FWL.
 CASA LOMA 5-25 TO BE AT 713' FNL, 266' FEL.
 BOTTOM HOLE AT 1972' FNL & 656' FWL.
 CASA LOMA 22-25 TO BE AT 701' FNL, 254' FEL.
 BOTTOM HOLE AT 2555' FNL & 1313' FWL.
 CASA LOMA 25-25 TO BE AT 690' FNL, 243' FEL.
 BOTTOM HOLE AT 2557' FNL & 2550' FWL.
 CASA LOMA 6-25 TO BE AT 679' FNL, 232' FEL.
 BOTTOM HOLE AT 1973' FNL & 1968' FWL.
 CASA LOMA 18-25 TO BE AT 668' FNL, 220' FEL.
 BOTTOM HOLE AT 1315' FNL & 1311' FWL.
 CASA LOMA 21-25 TO BE AT 656' FNL, 209' FEL.
 BOTTOM HOLE AT 1316' FNL & 2546' FWL.

PREPARED BY:

PFS
 Petroleum Field Services, LLC
 1801 W. 13th Ave.
 Denver, CO 80204

BAYSWATER EXPLORATION & PRODUCTION, LLC

FIELD DATE: 05-21-12	PAD NAME: CASA LOMA 8 PAD
DRAWING DATE: 06-21-12	SURFACE LOCATION: WELD COUNTY, COLORADO
BY: SMF	CHECK: KAG
NE 1/4 NE 1/4, SEC. 26, T7N, R67W, 6TH P.M.	

