

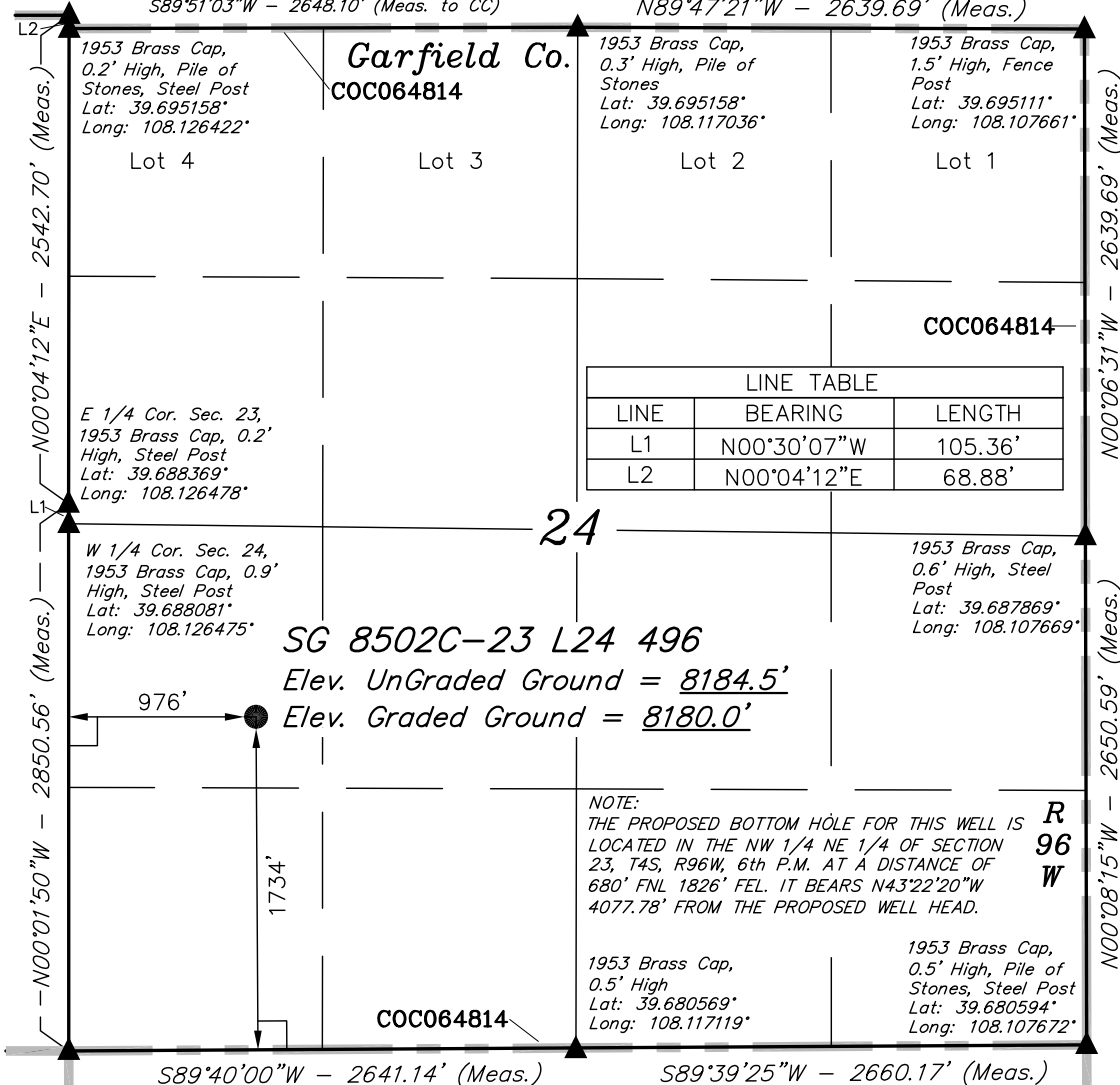
NE Cor Sec 23  
1953 Brass Cap,  
0.6' High, Pile of  
Stones  
Lat: 39.695347°  
Long: 108.126444°

T4S, R96W, 6th P.M.

Rio Blanco Co.

S89°51'03"W - 2648.68' (Meas. to True)  
S89°51'03"W - 2648.10' (Meas. to CC)

N89°47'21"W - 2639.69' (Meas.)



LEGEND:

- └─┘ = 90° SYMBOL
- = PROPOSED WELL HEAD.
- ▲ = SECTION CORNERS LOCATED.

SEE SHEET 7A FOR EXISTING  
IMPROVEMENT WITHIN 400' OF THE  
PROPOSED WELL DISTURBANCE

NOTE:  
THE PROPERTY LINE IS LOCATED  
N00°08'57\"/>

NAD 83 (SURFACE LOCATION)

LATITUDE = 39°41'07.14\"/>

NAD 27 (SURFACE LOCATION)

LATITUDE = 39°41'07.23\"/>

PDOP = 1.5

Encana OIL & GAS (USA) INC.

Well location, SG 8502C-23 L24 496 (SURFACE  
LOCATION), located as shown in the NW 1/4  
SW 1/4 of Section 24, T4S, R96W, 6th P.M.,  
Garfield County, Colorado.

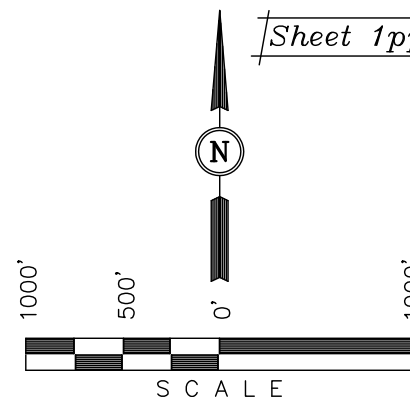
BASIS OF ELEVATION

BENCH MARK (H79) LOCATED IN THE NE 1/4 OF SECTION  
25, T4S, R98W, 6th P.M. TAKEN FROM THE BULL FORK  
QUADRANGLE, COLORADO, 7.5 MINUTE SERIES (TOPO  
GRAPHICAL MAP) PUBLISHED BY THE UNITED STATES  
DEPARTMENT OF THE INTERIOR, GEOLOGICAL SURVEY.  
SAID ELEVATION IS MARKED AS BEING 8535 FEET.

BASIS OF BEARINGS

BASIS OF BEARINGS IS A G.P.S. OBSERVATION.

Sheet 1pp of 11



CERTIFICATE

THIS IS TO CERTIFY THAT THE ABOVE PLAT WAS PREPARED AND  
LOCATION AS SHOWN WAS STAKED ON THE GROUND FROM FIELD  
NOTES OF ACTUAL SURVEYS MADE BY ME OR UNDER MY  
SUPERVISION AND THAT THE SAME ARE TRUE AND CORRECT TO  
THE BEST OF MY KNOWLEDGE AND BELIEF.

REGISTERED LAND SURVEYOR  
REGISTRATION NO. 17492  
STATE OF COLORADO

Revised: 04-01-12 D.R.B.

UINTAH ENGINEERING & LAND SURVEYING  
85 SOUTH 200 EAST - VERNAL, UTAH 84078  
(435) 789-1017

SCALE 1" = 1000'	DATE SURVEYED: 08-18-10	DATE DRAWN: 06-09-11
PARTY B.J. D.B. D.R.B.	REFERENCES G.L.O. PLAT	
WEATHER COOL	FILE Encana OIL & GAS (USA) INC.	

T4S, R96W, 6th P.M.

Rio Blanco Co.

1953 Brass Cap,  
1.1' High, Small  
Pile of Stones  
Lat: 39.695336°  
Long: 108.131125°

1953 Brass Cap,  
0.6' High, Pile of  
Stones  
Lat: 39.695347°  
Long: 108.126444°

S89°07'26"W -  
1370.45' (Meas.)

S89°05'03"W -  
1371.03' (Meas.)

S89°48'15"W -  
1318.16' (Meas.)

S89°41'16"W -  
1317.81' (Meas.)

COC064814

1978 Brass Cap,  
0.5' High, Stones  
Lat: 39.695283°  
Long: 108.140678°

1953 Brass Cap,  
1.1' High, Small  
Pile of Stones  
Lat: 39.695333°  
Long: 108.135808°

Garfield Co.

SG 8502C-23 L24 496  
TARGET BOTTOM HOLE

Lot 1

NW Cor Sec 24  
1953 Brass Cap,  
0.2' High, Pile of  
Stones, Steel Post  
Lat: 39.695158°  
Long: 108.126422°

1826'

NOTE:  
THE PROPOSED BOTTOM HOLE BEARS  
N43°22'20"W 4077.78' FROM THE PROPOSED  
WELL HEAD WHICH IS LOCATED IN THE NW  
1/4 SW 1/4 OF SECTION 24, T4S, R96W,  
6th P.M. AT 1734' FSL 976' FWL.

Lot 2

1958 Brass Cap 0.5'  
High, Steel Post  
Lat: 39.687828°  
Long: 108.145436°

1978 Brass Cap  
0.3' High, Stones  
Lat: 39.687903°  
Long: 108.140675°

23

S87°20'59"W -  
1341.33' (Meas.)

Lot 6

Lot 5

Lot 4

Lot 7

E 1/4 Cor. Sec. 23,  
1953 Brass Cap, 0.2'  
High, Steel Post  
Lat: 39.688369°  
Long: 108.126478°

W 1/4 Cor. Sec. 24,  
1953 Brass Cap, 0.9'  
High, Steel Post  
Lat: 39.688081°  
Long: 108.126475°

Lot 8

1953 Brass Cap  
0.4' High, Steel  
Post, Pile of  
Stones  
Lat: 39.680583°  
Long: 108.145383°

1953 Brass Cap  
1.0' High, Pile of  
Stones  
Lat: 39.680553°  
Long: 108.135925°

COC064814

1953 Brass Cap  
0.5' High, Mound of  
Stones, Steel Post  
Lat: 39.680547°  
Long: 108.126500°

N89°53'21"W - 2663.51' (Meas.)

S89°53'19"W - 2653.93' (Meas.)

31.68'  
(G.L.O.)  
True  
Position

S00°27'48"E - 2639.81' (Meas.)

N00°04'12"E - 2542.70' (Meas.)

N00°01'50"W - 2850.56' (Meas.)

Encana OIL & GAS (USA) INC.

Well location, SG 8502C-23 L24 496 (TARGET  
BOTTOM HOLE), located as shown in the NW  
1/4 NE 1/4 of Section 23, T4S, R96W, 6th  
P.M., Garfield County, Colorado.

BASIS OF ELEVATION

BENCH MARK (H79) LOCATED IN THE NE 1/4 OF SECTION  
25, T4S, R98W, 6th P.M. TAKEN FROM THE BULL FORK  
QUADRANGLE, COLORADO, 7.5 MINUTE SERIES (TOPO  
GRAPHICAL MAP) PUBLISHED BY THE UNITED STATES  
DEPARTMENT OF THE INTERIOR, GEOLOGICAL SURVEY.  
SAID ELEVATION IS MARKED AS BEING 8535 FEET.

BASIS OF BEARINGS

BASIS OF BEARINGS IS A G.P.S. OBSERVATION.

Sheet 1qq of 11



SCALE

CERTIFICATE

THIS IS TO CERTIFY THAT THE ABOVE PLAT WAS PREPARED AND  
LOCATION AS SHOWN WAS STAKED ON THE GROUND FROM FIELD  
NOTES OF ACTUAL SURVEYS MADE BY ME OR UNDER MY  
SUPERVISION AND THAT THE SAME ARE TRUE AND CORRECT TO  
THE BEST OF MY KNOWLEDGE AND BELIEF.

REGISTERED LAND SURVEYOR  
REGISTRATION NO. 17492  
STATE OF COLORADO

Revised: 04-01-12 D.R.B.

UINTAH ENGINEERING & LAND SURVEYING  
85 SOUTH 200 EAST - VERNAL, UTAH 84078  
(435) 789-1017

LEGEND:

└─┘ = 90° SYMBOL

● = PROPOSED WELL HEAD.

▲ = SECTION CORNERS LOCATED.

△ = SECTION CORNERS RE-EST.  
(Not Set on Ground)

NAD 83 (TARGET BOTTOM HOLE)

LATITUDE = 39°41'36.49" (39.693469)  
LONGITUDE = 108°07'58.58" (108.132939)

NAD 27 (TARGET BOTTOM HOLE)

LATITUDE = 39°41'36.58" (39.693494)  
LONGITUDE = 108°07'56.29" (108.132303)

SCALE 1" = 1000'	DATE SURVEYED: 08-18-10	DATE DRAWN: 06-09-11
PARTY B.J. D.B. D.R.B.	REFERENCES G.L.O. PLAT	
WEATHER COOL	FILE Encana OIL & GAS (USA) INC.	