
WPX ENERGY ROCKY MOUNTAIN LLC-EBUS

**PA 313-29
PARACHUTE
Garfield County , Colorado**

Cement Surface Casing
01-Apr-2012

Job Site Documents

The Road to Excellence Starts with Safety

Sold To #: 300721		Ship To #: 2913283		Quote #:		Sales Order #: 9371348	
Customer: WPX ENERGY ROCKY MOUNTAIN LLC-EBUS				Customer Rep: WILSON, W.C			
Well Name: PA			Well #: 313-29			API/UWI #: 05-045-19547	
Field: PARACHUTE		City (SAP): PARACHUTE		County/Parish: Garfield		State: Colorado	
Legal Description:							
Lat: N 39.49 deg. OR N 39 deg. 29 min. 23.69 secs.				Long: W 108.023 deg. OR W -109 deg. 58 min. 36.552 secs.			
Contractor: NABORS 577			Rig/Platform Name/Num: NABORS 577				
Job Purpose: Cement Surface Casing						Ticket Amount:	
Well Type: Development Well			Job Type: Cement Surface Casing				
Sales Person: SCOTT, KYLE			Srvc Supervisor: REEVES, BRANDON			MBU ID Emp #: 287883	

Activity Description	Date/Time	Cht #	Rate bbl/min	Volume bbl		Pressure psig		Comments
				Stage	Total	Tubing	Casing	
Call Out	03/31/2012 20:00							
Pre-Convoy Safety Meeting	03/31/2012 22:00							
Arrive at Location from Service Center	03/31/2012 23:15							ON LOCATION TIME WAS 2130. ARRIVED AT LOCATION AT 2315
Assessment Of Location Safety Meeting	03/31/2012 23:40							
Other	03/31/2012 23:45							SPOT EQUIPMENT
Pre-Rig Up Safety Meeting	03/31/2012 23:55							
Rig-Up Equipment	04/01/2012 00:05							
Pre-Job Safety Meeting	04/01/2012 00:40							
Start Job	04/01/2012 00:53							
Test Lines	04/01/2012 00:54						3160.0	
Pump Spacer 1	04/01/2012 00:58		4	20			100.0	FRESH WATER SPACER
Pump Lead Cement	04/01/2012 01:07		8	161			415.0	380 SKS. @ 12.3 # 2.38 YIELD 13.75 WRQ.
Pump Tail Cement	04/01/2012 01:27		8	60.1			395.0	160 SKS. TAIL @ 12.8# 2.11 YIELD 11.75 WRQ.
Drop Top Plug	04/01/2012 01:38							
Pump Displacement	04/01/2012 01:39		10				870.0	FRESH WATER DISPLACEMENT
Slow Rate	04/01/2012 01:57		2	158			515.0	
Bump Plug	04/01/2012 02:00		2	166			910.0	PLUG LANDED AT 520 PSI. PRESSURED UP TO 910 PSI.

Cementing Job Log

Activity Description	Date/Time	Cht #	Rate bbl/ min	Volume bbl		Pressure psig		Comments
				Stage	Total	Tubing	Casing	
Check Floats	04/01/2012 02:03							FLOATS HELD
End Job	04/01/2012 02:05							WELL WAS CIRCULATED BEFORE STARTING THE JOB. GOOD CIRCULATION THROUGHOUT THE JOB. PIPE WAS RECIPROCATED. CIRCULATED 35 BBLS. OF CEMENT TO SURFACE.
Rig-Down Equipment	04/01/2012 02:20							THANKS FOR USING HALLIBURTON. BRANDON REEVES AND CREW.

The Road to Excellence Starts with Safety

Sold To #: 300721	Ship To #: 2913283	Quote #:	Sales Order #: 9371348
Customer: WPX ENERGY ROCKY MOUNTAIN LLC-EBUS	Customer Rep: WILSON, W.C		
Well Name: PA	Well #: 313-29	API/UWI #: 05-045-19547	
Field: PARACHUTE	City (SAP): PARACHUTE	County/Parish: Garfield	State: Colorado
Lat: N 39.49 deg. OR N 39 deg. 29 min. 23.69 secs.	Long: W 108.023 deg. OR W -109 deg. 58 min. 36.552 secs.		
Contractor: NABORS 577	Rig/Platform Name/Num: NABORS 577		
Job Purpose: Cement Surface Casing			
Well Type: Development Well	Job Type: Cement Surface Casing		
Sales Person: SCOTT, KYLE	Srvc Supervisor: REEVES, BRANDON	MBU ID Emp #: 287883	

Job Personnel

HES Emp Name	Exp Hrs	Emp #	HES Emp Name	Exp Hrs	Emp #	HES Emp Name	Exp Hrs	Emp #
BRENNECKE, ANDREW Bailey	4.0	486345	JENSEN, JESSE Robert	4.0	478774	REEVES, BRANDON W	4.0	287883
SPARKS, CLIFFORD Paul	4.0	502476						

Equipment

HES Unit #	Distance-1 way	HES Unit #	Distance-1 way	HES Unit #	Distance-1 way	HES Unit #	Distance-1 way
10565341	60 mile	10804567	60 mile	10867322	60 mile	10998512	60 mile
11360871	60 mile	11542767	60 mile	11583931	60 mile		

Job Hours

Date	On Location Hours	Operating Hours	Date	On Location Hours	Operating Hours	Date	On Location Hours	Operating Hours
03/31/2012	1	0	04/01/2012	3	3			

TOTAL Total is the sum of each column separately

Job

Formation Name	Top	Bottom	Called Out	Date	Time	Time Zone
Formation Depth (MD)			On Location	31 - Mar - 2012	20:00	MST
Form Type		BHST	Job Started	31 - Mar - 2012	23:15	MST
Job depth MD	2191. ft	Job Depth TVD	Job Started	01 - Apr - 2012	00:53	MST
Water Depth		Wk Ht Above Floor	Job Completed	01 - Apr - 2012	02:05	MST
Perforation Depth (MD)	From	To	Departed Loc	01 - Apr - 2012	00:00	MST

Well Data

Description	New / Used	Max pressure psig	Size in	ID in	Weight lbm/ft	Thread	Grade	Top MD ft	Bottom MD ft	Top TVD ft	Bottom TVD ft
-------------	------------	-------------------	---------	-------	---------------	--------	-------	-----------	--------------	------------	---------------

Sales/Rental/3rd Party (HES)

Description	Qty	Qty uom	Depth	Supplier
PLUG,CMTG,TOP,9 5/8,HWE,8.16 MIN/9.06 MA	1	EA		

Tools and Accessories

Type	Size	Qty	Make	Depth	Type	Size	Qty	Make	Depth	Type	Size	Qty	Make
Guide Shoe					Packer					Top Plug	9.625"	1	
Float Shoe					Bridge Plug					Bottom Plug			
Float Collar					Retainer					SSR plug set			
Insert Float										Plug Container	9.625"	1	
Stage Tool										Centralizers			

Miscellaneous Materials

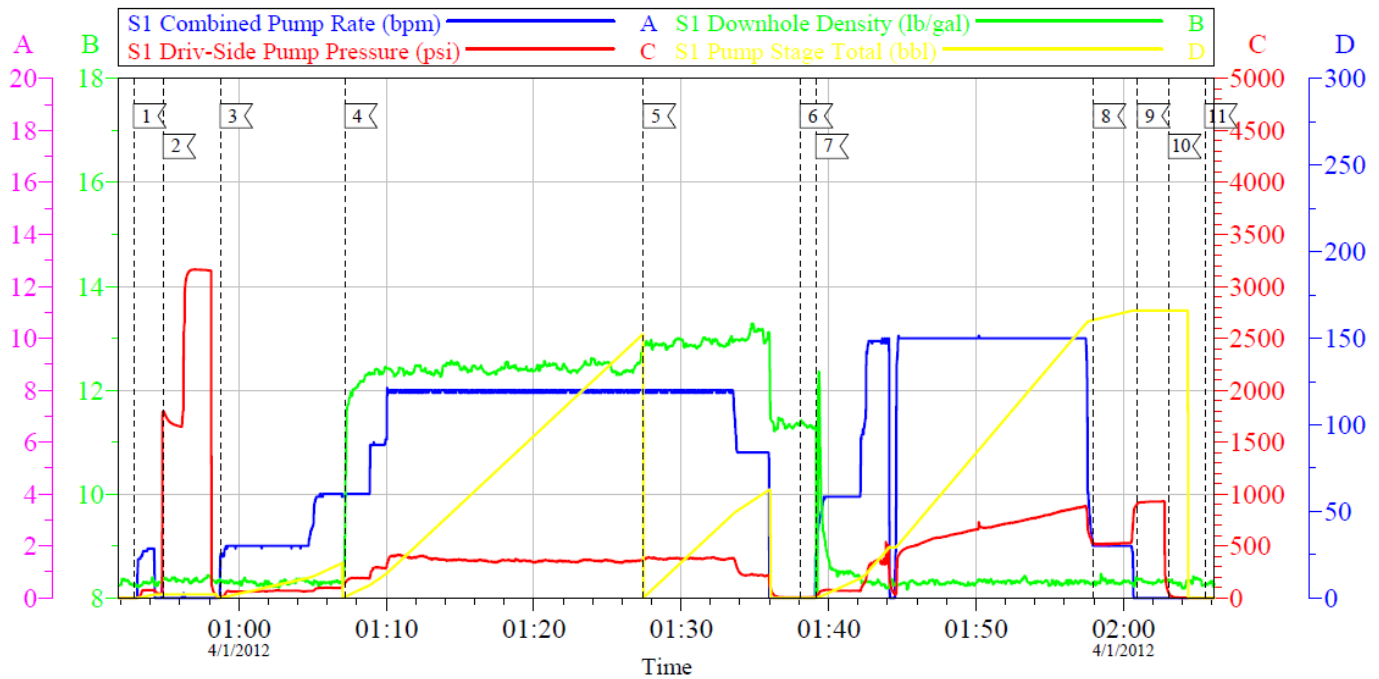
Gelling Agt	Conc	Surfactant	Conc	Acid Type	Qty	Conc	%
Treatment Fld	Conc	Inhibitor	Conc	Sand Type	Size		Qty

Fluid Data

Stage/Plug #: 1	Fluid #	Stage Type	Fluid Name	Qty	Qty uom	Mixing Density lbm/gal	Yield ft3/sk	Mix Fluid Gal/sk	Rate bbl/min	Total Mix Fluid Gal/sk
-----------------	---------	------------	------------	-----	---------	------------------------	--------------	------------------	--------------	------------------------

Stage/Plug #: 1									
Fluid #	Stage Type	Fluid Name	Qty	Qty uom	Mixing Density lbm/gal	Yield ft ³ /sk	Mix Fluid Gal/sk	Rate bbl/min	Total Mix Fluid Gal/sk
1	Fresh Water		20.00	bbl	8.33	.0	.0	.0	
2	VersaCem Lead	VERSACEM (TM) SYSTEM (452010)	380.0	sacks	12.3	2.38	13.75		13.75
	13.75 Gal	FRESH WATER							
3	VersaCem Tail	VERSACEM (TM) SYSTEM (452010)	160.0	sacks	12.8	2.11	11.75		11.75
	11.75 Gal	FRESH WATER							
4	Displacement Fluid		169.00	bbl	8.34	.0	.0	.0	
Calculated Values		Pressures		Volumes					
Displacement	168	Shut In: Instant		Lost Returns	N0	Cement Slurry	221.1	Pad	
Top Of Cement	SURFACE	5 Min		Cement Returns	35	Actual Displacement	166	Treatment	
Frac Gradient		15 Min		Spacers		Load and Breakdown		Total Job	
Rates									
Circulating		Mixing	8	Displacement	10	Avg. Job	9		
Cement Left In Pipe	Amount	44.17 ft	Reason	Shoe Joint					
Frac Ring # 1 @	ID	Frac ring # 2 @	ID	Frac Ring # 3 @	ID	Frac Ring # 4 @	ID		
The Information Stated Herein Is Correct				Customer Representative Signature					

WILLIAMS PRODUCTION 9 5/8" SURFACE



Local Event Log					
Intersection	SDPP	Intersection	SDPP	Intersection	SDPP
1 START JOB	00:52:52 3.000	2 TEST LINES	00:54:52 1795	3 PUMP H2O SPACER	00:58:44 7.000
4 PUMP LEAD CEMENT	01:07:11 143.8	5 PUMP TAIL CEMENT	01:27:26 370.5	6 DROP TOP PLUG	01:38:05 7.000
7 PUMP DISPLACEMENT	01:39:08 10.72	8 SLOW RATE	01:57:58 521.8	9 LAND PLUG	02:00:58 908.9
10 CHECK FLOATS	02:03:04 52.62	11 END JOB	02:05:32 3.000		

Customer:	Job Date: 01-Apr-2012	Sales Order #: 9371348
Well Description:	Job Type	ADC Used
Supervisor	Company Rep	Elite/Operator

OptiCem v6.4.4
01-Apr-12 02:10