

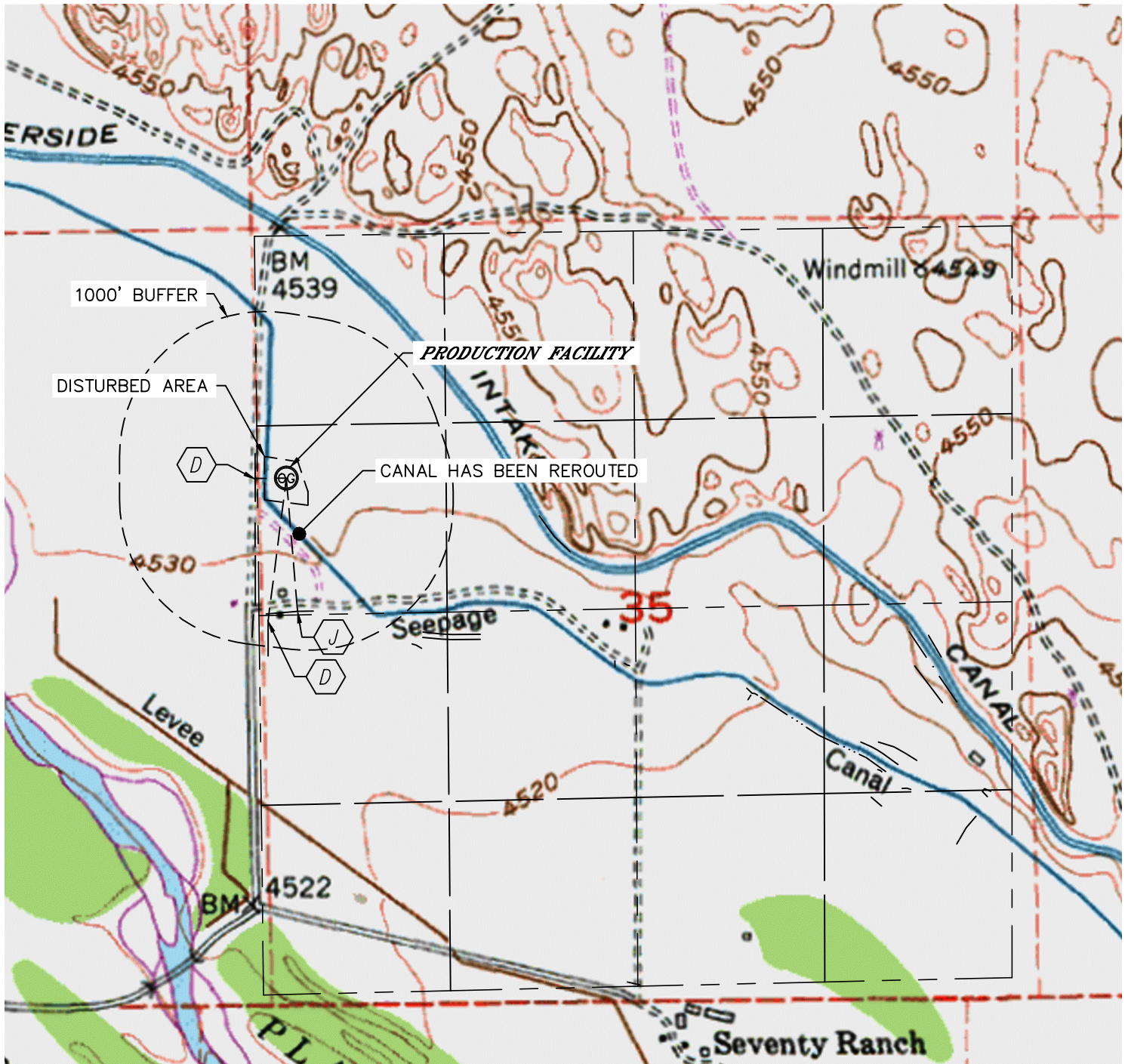




Lat40°, Inc. 1635 Foxtrail Drive, Suite 325 Loveland, CO 970-776-3321

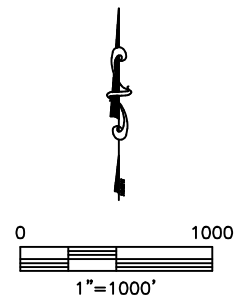
PRODUCTION FACILITY HYDROLOGY MAP

NORTH PLATTE H-35 PAD

SECTION: 35
TOWNSHIP: 5N
RANGE: 63W



-  DITCH 215' W, 994' SW
-  CANAL 921' SE



DATE: rev 7/19/12
PROJECT#: 2011338