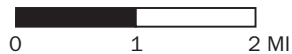


# LEGEND:

# ACCESS ROAD MAP: A TOPO

● Proposed Location

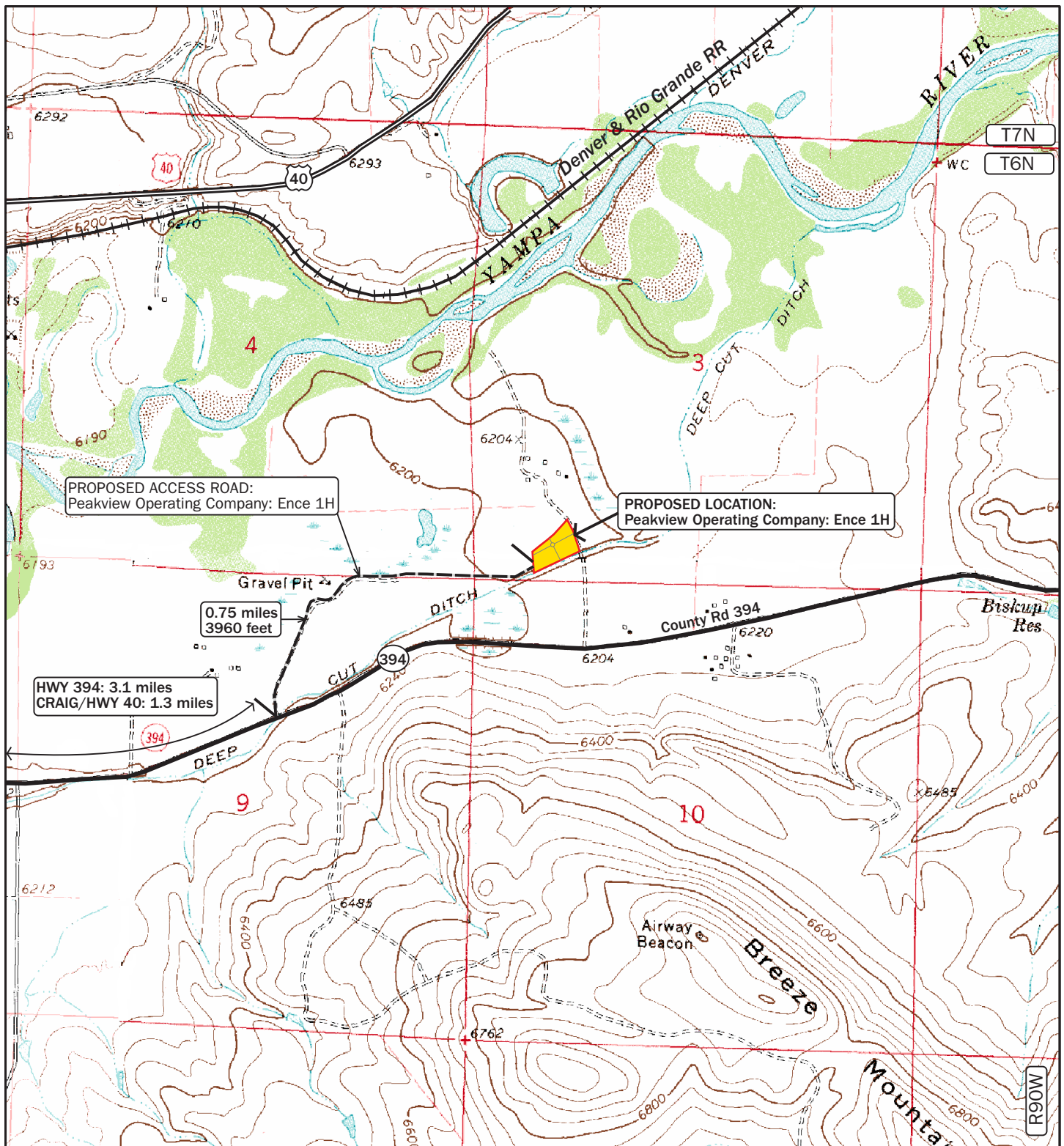


Peakview Operating Company, LLC.  
216 Sixteenth Street, Suite 1450  
Denver, CO 80202

**Ence 1H**  
SW1/4 SW1/4  
SECTION 3, T6N R90W, 6TH P.M.  
MOFFAT COUNTY, COLORADO  
434.1' FSL 932.9' FWL

DOWLING LAND SURVEYORS, LLC  
P.O. BOX 954  
HAYDEN, COLORADO 81639  
(970) 276-3613  
dowling@plotz.biz

SCALE	DRG	DATE	FILE
		08/03/12	FH11refph



# LEGEND:

- Existing County Road
- Proposed Access Road



## ACCESS ROAD MAP: B TOPO



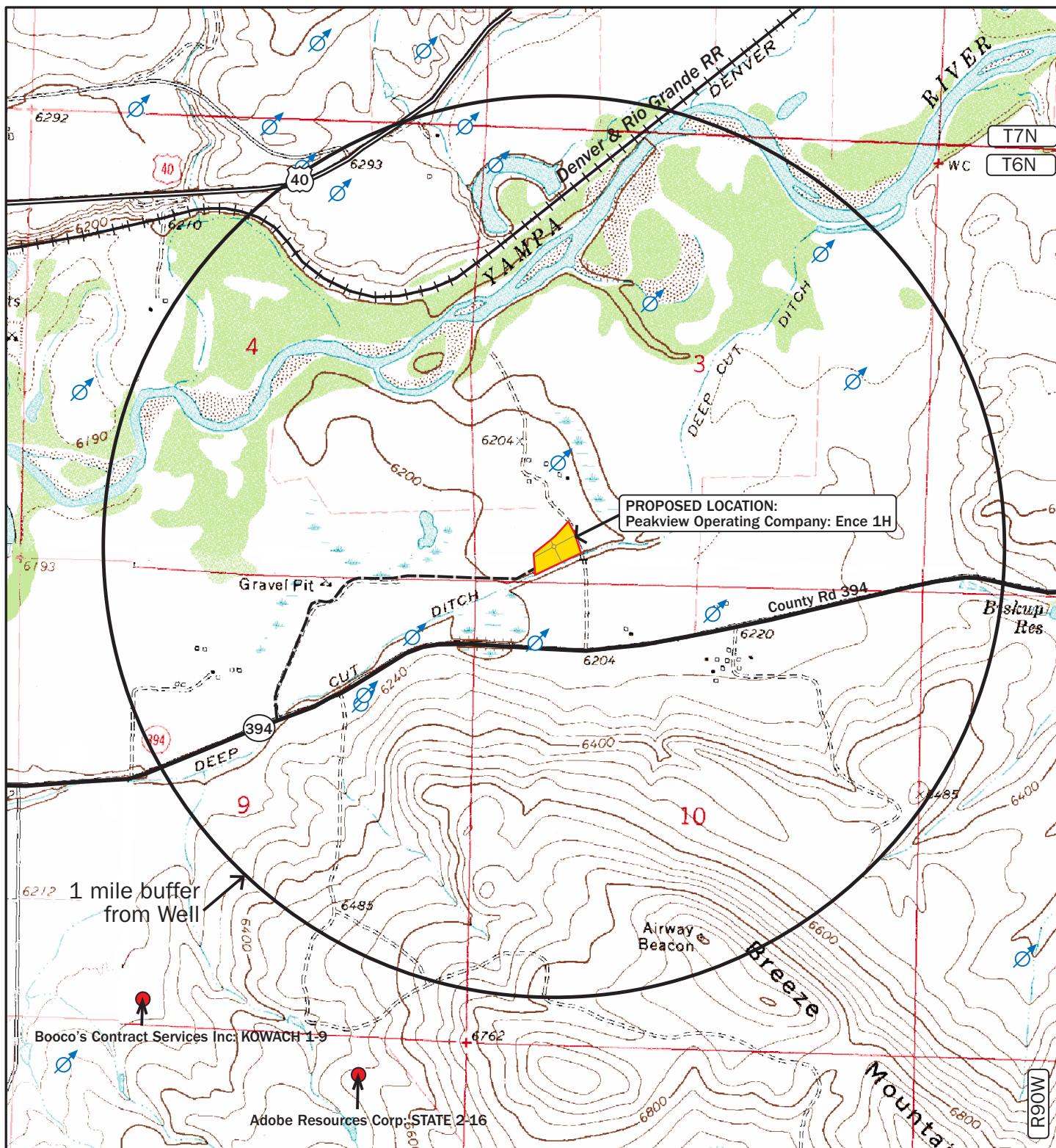
Peakview Operating Company, LLC.  
216 Sixteenth Street, Suite 1450  
Denver, CO 80202

**Ence 1H**  
SW1/4 SW1/4  
SECTION 3, T6N R90W, 6TH P.M.  
MOFFAT COUNTY, COLORADO  
434.1' FSL 932.9' FWL

DOWLING LAND SURVEYORS, LLC  
P.O. BOX 954  
HAYDEN, COLORADO 81639  
(970) 276-3613  
dowling@plotz.biz

SCALE	DRG	DATE	FILE
		08/03/12	FH11refph





# LEGEND:

- Water Well (8/03/12 CO Div. Water Resources)
- Existing Oil/Gas Well (9/9/11 COGCC Well Data)



0 1000 2000 FT

## TOPOGRAPHIC MAP: C TOPO

Peakview Operating Company, LLC.  
216 Sixteenth Street, Suite 1450  
Denver, CO 80202

**Ence 1H**  
SW1/4 SW1/4  
SECTION 3, T6N R90W, 6TH P.M.  
MOFFAT COUNTY, COLORADO  
434.1' FSL 932.9' FWL

DOWLING LAND SURVEYORS, LLC  
P.O. BOX 954  
HAYDEN, COLORADO 81639  
(970) 276-3613  
dowling@plotz.biz

SCALE	DRG	DATE	FILE
		08/08/12	FH11PG14