

Cementing Job Summary

The Road to Excellence Starts with Safety

| | | | |
|--|--|----------------------------|------------------------|
| Sold To #: 304535 | Ship To #: 2281495 | Quote #: | Sales Order #: 9450174 |
| Customer: PDC ENERGY EBUS | Customer Rep: SALIORS, CHAD | | |
| Well Name: State 6524 | Well #: 21-28 | API/UWI #: 05-123-20877-00 | |
| Field: Wattenberg | City (SAP): PLATTEVILLE | County/Parish: Weld | State: Colorado |
| Lat: N 40.463 deg. OR N 40 deg. 27 min. 47.088 secs. | Long: W 104.443 deg. OR W -105 deg. 33 min. 23.616 secs. | | |

Job Purpose: Recement Service

Well Type: Development Well

Job Type: Recement Service

Sales Person: FLING, MATTHEW

Srcv Supervisor: NIELSON, BRANDON

MBU ID Emp #: 479703

Job Personnel

| HES Emp Name | Exp Hrs | Emp # | HES Emp Name | Exp Hrs | Emp # | HES Emp Name | Exp Hrs | Emp # |
|------------------|---------|--------|------------------------------|---------|--------|-----------------------|---------|--------|
| BARNES, BRIAN L | 4.3 | 485204 | CHAVEZ, JEROME Christophe | 4.3 | 458298 | NIELSON, BRANDON K | 4.3 | 479703 |
| STOEGER, KEITH A | 4.3 | 486734 | | | | | | |

Equipment

| HES Unit # | Distance-1 way | HES Unit # | Distance-1 way | HES Unit # | Distance-1 way | HES Unit # | Distance-1 way |
|------------|----------------|------------|----------------|------------|----------------|------------|----------------|
| 10248062C | 54 mile | 10951212 | 54 mile | 11036301 | 54 mile | 11362287C | 54 mile |

Job Hours

| Date | On Location Hours | Operating Hours | Date | On Location Hours | Operating Hours | Date | On Location Hours | Operating Hours |
|---------|-------------------|-----------------|--|-------------------|-----------------|------|-------------------|-----------------|
| 4/19/12 | 4.3 | 2 | | | | | | |
| TOTAL | | | Total is the sum of each column separately | | | | | |

Job

| Formation Name | Formation Depth (MD) | Top | Bottom | Form Type | Job depth MD | Job Depth TVD | Water Depth | Perforation Depth (MD) | From | To |
|----------------|----------------------|-----|--------|-----------|--------------|-------------------|-------------|------------------------|------|----|
| | | | | BHST | 3009. ft | 3009. ft | | | | |
| | | | | | | Wk Ht Above Floor | 5. ft | | | |

Job Times

| | Date | Time | Time Zone |
|---------------|-----------------|-------|-----------|
| Called Out | 19 - Apr - 2012 | 02:30 | MST |
| On Location | 19 - Apr - 2012 | 06:00 | MST |
| Job Started | 19 - Apr - 2012 | 07:30 | MST |
| Job Completed | 19 - Apr - 2012 | 09:18 | MST |
| Departed Loc | 19 - Apr - 2012 | 10:15 | MST |

Well Data

| Description | New / Used | Max pressure psig | Size in | ID in | Weight lbm/ft | Thread | Grade | Top MD ft | Bottom MD ft | Top TVD ft | Bottom TVD ft |
|-------------------|------------|-------------------|---------|-------|---------------|--------|-------|-----------|--------------|------------|---------------|
| Open Hole | | | | 12. | | | | 449. | 4000. | | |
| Production Casing | Used | | 4.5 | 4.052 | 10.5 | | J-55 | . | 8450. | | |
| Surface Casing | Used | | 8.625 | 8.097 | 24. | | J-55 | . | 449. | | |
| TUBING | Used | | 1.25 | .671 | 3.02 | | | . | 3020. | | |

Tools and Accessories

| Type | Size | Qty | Make | Depth | Type | Size | Qty | Make | Depth | Type | Size | Qty | Make |
|--------------|------|-----|------|-------|-------------|------|-----|------|-------|----------------|------|-----|------|
| Guide Shoe | | | | | Packer | | | | | Top Plug | | | |
| Float Shoe | | | | | Bridge Plug | | | | | Bottom Plug | | | |
| Float Collar | | | | | Retainer | | | | | SSR plug set | | | |
| Insert Float | | | | | | | | | | Plug Container | | | |
| Stage Tool | | | | | | | | | | Centralizers | | | |

Miscellaneous Materials

| Gelling Agt | Conc | Surfactant | Conc | Acid Type | Qty | Conc | % |
|---------------|------|------------|------|-----------|------|------|---|
| Treatment Fld | Conc | Inhibitor | Conc | Sand Type | Size | Qty | |

Fluid Data

| Stage/Plug #: 1 | Fluid # | Stage Type | Fluid Name | Qty | Qty uom | Mixing Density lbm/gal | Yield ft3/sk | Mix Fluid Gal/sk | Rate bbl/min | Total Mix Fluid Gal/sk |
|-----------------|---------|------------|------------|-----|---------|------------------------|--------------|------------------|--------------|------------------------|
|-----------------|---------|------------|------------|-----|---------|------------------------|--------------|------------------|--------------|------------------------|

| Stage/Plug #: 1 | | | | | | | | | | |
|--|----------------------|------------------------------|-----------|-----------------------------------|------------------------|---------------------------|------------------|--------------|------------------------|--|
| Fluid # | Stage Type | Fluid Name | Qty | Qty uom | Mixing Density lbm/gal | Yield ft ³ /sk | Mix Fluid Gal/sk | Rate bbl/min | Total Mix Fluid Gal/sk | |
| 1 | ClayWeb Water Spacer | | 10.00 | bbl | 8.33 | .0 | .0 | 2.0 | | |
| 2 | MUD FLUSH III | MUD FLUSH III - SBM (528788) | 12.00 | bbl | 8.4 | .0 | .0 | 2.0 | | |
| 3 | ClayWeb Water Spacer | | 10.00 | bbl | 8.33 | .0 | .0 | 2.0 | | |
| 59.525 gal/Mgal | | CLA-WEB - TOTE (101985045) | | | | | | | | |
| 4 | Varicem 12# | VARICEM (TM) CEMENT (452009) | 360.0 | sacks | 12. | 2.18 | 12.34 | 2.0 | 12.34 | |
| 12.34 Gal | | FRESH WATER | | | | | | | | |
| Calculated Values | | | Pressures | | Volumes | | | | | |
| Displacement | | Shut In: Instant | | Lost Returns | | Cement Slurry | | Pad | | |
| Top Of Cement | | 5 Min | | Cement Returns 6 BBL | | Actual Displacement | | Treatment | | |
| Frac Gradient | | 15 Min | | Spacers | | Load and Breakdown | | Total Job | | |
| Rates | | | | | | | | | | |
| Circulating | | Mixing | | Displacement | | Avg. Job | | | | |
| Cement Left In Pipe | | Amount | 0 ft | Reason | Shoe Joint | | | | | |
| Frac Ring # 1 @ | ID | Frac ring # 2 @ | ID | Frac Ring # 3 @ | ID | Frac Ring # 4 @ | ID | | | |
| The Information Stated Herein Is Correct | | | | Customer Representative Signature | | | | | | |

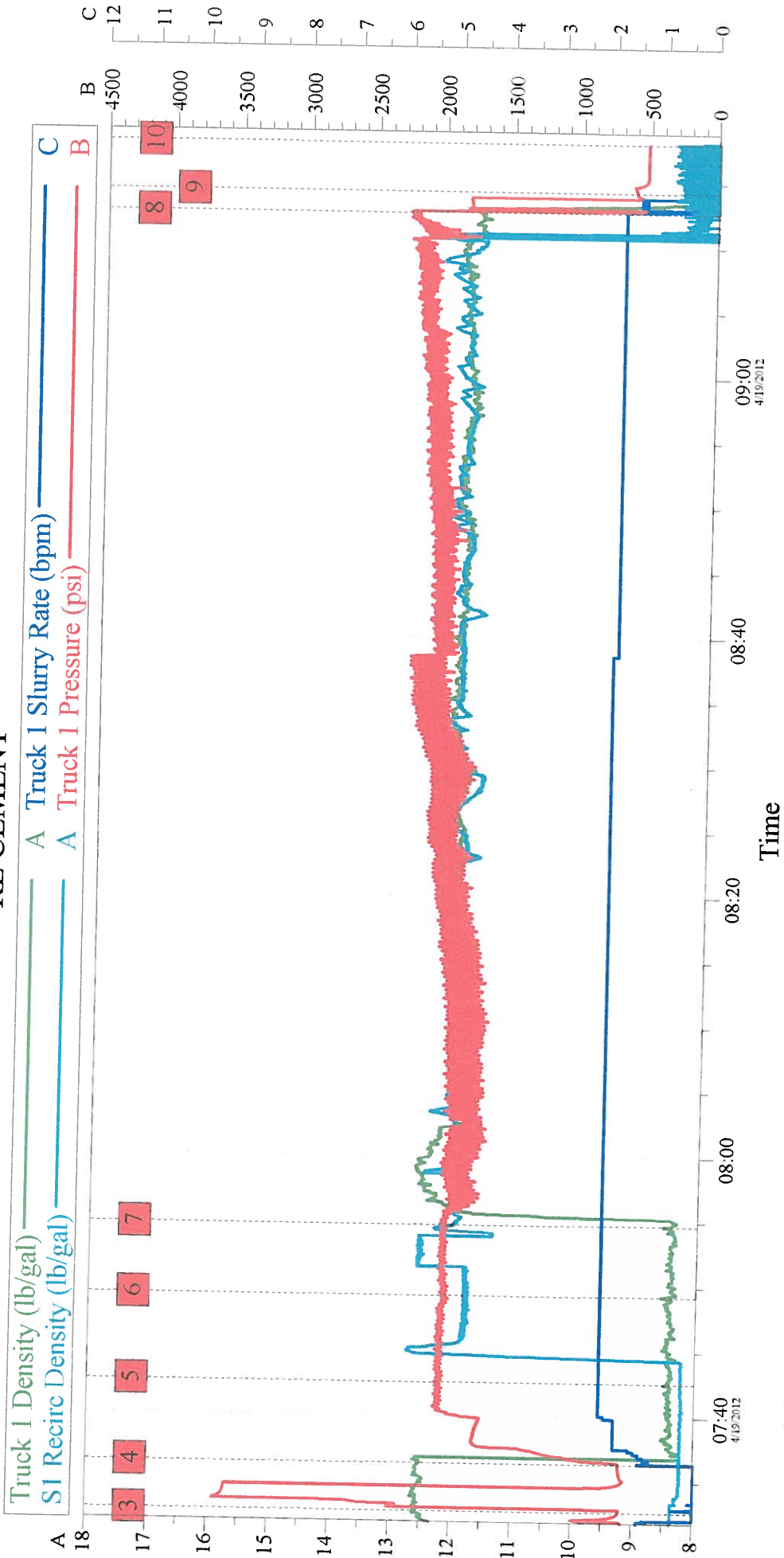
The Road to Excellence Starts with Safety

| | | | |
|---|--------------------------------|---|-------------------------------|
| Sold To #: 304535 | Ship To #: 2281495 | Quote #: | Sales Order #: 9450174 |
| Customer: PDC ENERGY EBUS | | Customer Rep: SALIORS, CHAD | |
| Well Name: State 6524 | Well #: 21-28 | API/UWI #: 05-123-20877-00 | |
| Field: Wattenberg | City (SAP): PLATTEVILLE | County/Parish: Weld | State: Colorado |
| Legal Description: | | | |
| Lat: N 40.463 deg. OR N 40 deg. 27 min. 47.088 secs. | | Long: W 104.443 deg. OR W -105 deg. 33 min. 23.616 secs. | |
| Contractor: | | Rig/Platform Name/Num: | |
| Job Purpose: Recement Service | | Ticket Amount: | |
| Well Type: Development Well | | Job Type: Recement Service | |
| Sales Person: FLING, MATTHEW | | Srv Supervisor: NIELSON, BRANDON | |
| | | MBU ID Emp #: 479703 | |

| Activity Description | Date/Time | Cht # | Rate bbl/min | Volume bbl | | Pressure psig | | Comments |
|----------------------|---------------------|-------|--------------|------------|-------|---------------|--------|---|
| | | | | Stage | Total | Tubing | Casing | |
| Test Lines | 04/19/2012 07:32 | | | | | | | PRESSURE TEST TO 3500 PSI NO VISIBLE LEAKS |
| Pump Spacer 1 | 04/19/2012 07:36 | | 2 | 10 | | | | FRESH WATER |
| Pump Spacer 2 | 04/19/2012 07:42 | | 2 | 12 | | | | FRESH WATER MIXED WITH MUD FLUSH |
| Pump Spacer 1 | 04/19/2012 07:49 | | 2 | 10 | | | | FRESH WATER |
| Pump Cement | 04/19/2012 07:54 | | 2 | 141 | | | | 360 SKS VARICEM MIXED @ 12 PPG WITH FRESH WATER. CALLED 6 BBL CMT BACK TO SURFACE |
| Pump Displacement | 04/19/2012 09:12 | | 1.5 | 1.5 | | | | FRESH WATER |
| End Job | 04/19/2012 09:30 | | | | | | | |

PDC STATE 6524 21-28

RE CEMENT



Global Event Log

| Intersection | | Intersection | |
|-----------------|----------|---------------------|----------|
| 1 Starting Job | 07:17:17 | 2 Start Job | 07:31:24 |
| 4 Pump Spacer 1 | 07:36:21 | 5 Pump Spacer 2 | 07:42:37 |
| 7 Pump Cement | 07:54:43 | 8 Pump Displacement | 09:12:38 |
| 10 Ending Job | 09:18:01 | 9 End Job | 09:14:18 |
| | | 3 Test Lines | 07:32:39 |
| | | 6 Pump Spacer 1 | 07:49:15 |

Customer:

Well Description:

Job Date: 19-Apr-2012

UWI:

Sales Order #: 9450174