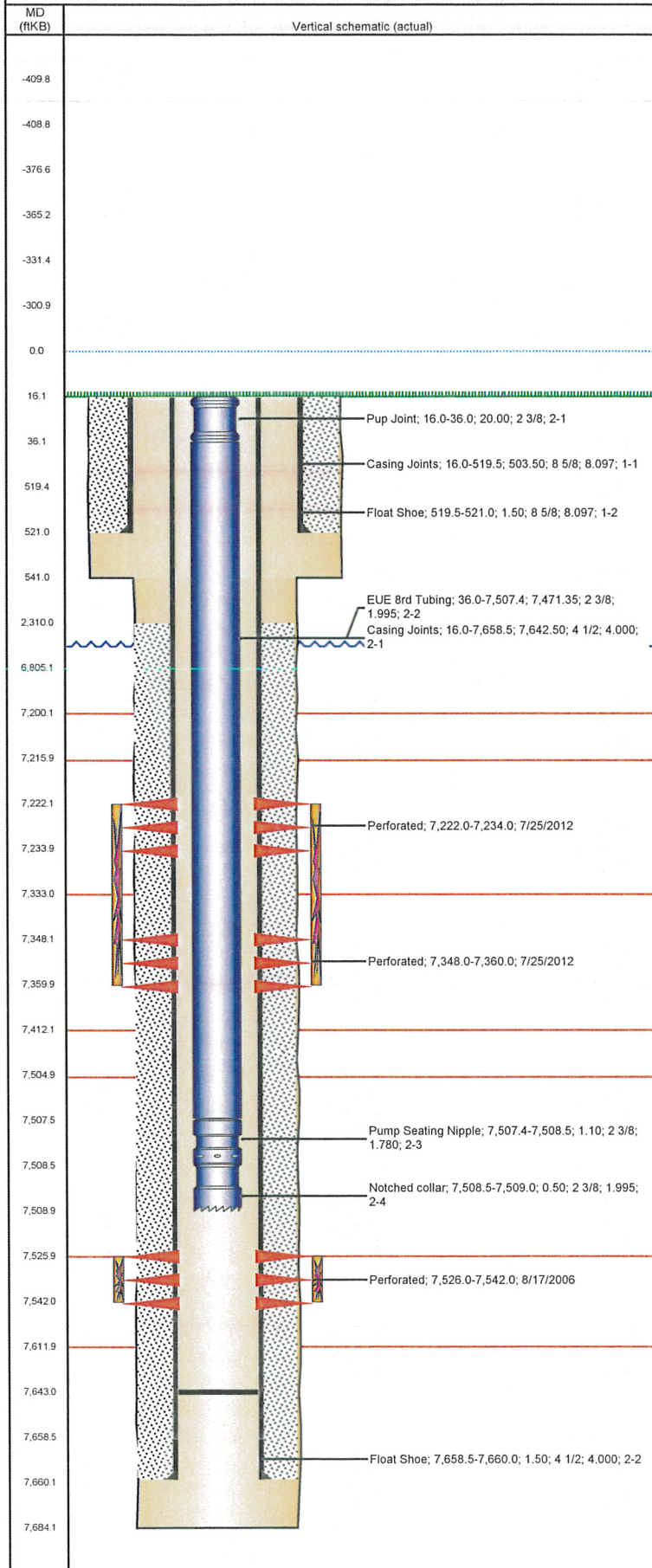


# Wellbore Schematic Input Report

Well Name: MOBILE PREMIX I35-01

DEVIATED - ORIGINAL HOLE, 8/23/2012 10:36:13 AM



## Well Header

API	Business Unit	District	Well Config
05-123-23860	WATTENBERG	15	DEVIATED
Original KB Elevation (ft)	KB - GL / MSL (ftKB)	Spud Date	P & A Date
4,683.00	16.00	7/13/2006	
Comment			

## Directions To Well

"O" STREET & 35TH AVE, S .8, W .2, NE .2 INTO

## Surface Location (Congressional)

Quarter 1	Quarter 2	Quarter 3	Quarter 4	Section	Township	Twnshp...	Range	Rng E/W...
		NE	SE	35	6	N	66	W

## Bottom Hole Location

North-South Distance (ft)	From N or S Line	East-West Distance (ft)	From E or W Line
672.0	FNL	687.0	FEL

## Plug Back Total Depths

Date	Depth (ftKB)	Method	Com
7/18/2006	7,643.0	TAG	GUIDE SHOE
8/10/2006	7,616.0	CASED HOLE LOG	DEPTH LOGGER/CBL
6/18/2012	7,643.0	TAG	C/O SAND TO 7643'

## Wellbore Sections

Section Des	Size (in)	Act Top (ftKB)	Act Btm (ftKB)
SURFACE	12 1/4	16.0	541.0
PRODUCTION	7 7/8	541.0	7,684.0

## Zone Statuses

Zone Name	Status Date	Status	Job
CODELL	9/8/2006	PR	DRILLING/COMPLETION - ORIGINAL, 7/13/2006 00:00
CODELL	7/28/2012	PR	RE-FRAC & RECOMPLETE, 6/15/2012 05:00
NIOBRARA	7/28/2012	PR	RE-FRAC & RECOMPLETE, 6/15/2012 05:00

## Casing Strings

### Surface, 521.0ftKB

Casing Description	Run Date	OD (in)	Wt/Len (l...)	Grade	Top (ftKB)	Set Depth...
Surface	7/14/2006	8 5/8	24.00	J-55	16.0	521.0

### Production, 7,660.0ftKB

Casing Description	Run Date	OD (in)	Wt/Len (l...)	Grade	Top (ftKB)	Set Depth...
Production	7/18/2006	4 1/2	11.60	M-80	16.0	7,660.0

## Cement

Description	Top Depth (ftKB)	Bottom Depth (ftKB)
SURFACE CASING CEMENT	16.0	521.0
Description	Top Depth (ftKB)	Bottom Depth (ftKB)
PRODUCTION CASING CEMENT	2,310.0	7,660.0

## Tubing Components

Item Des	OD (in)	Wt (lb/ft)	Grade	Jts	Len (ft)	Btm (ftKB)	Btm (TVD) (ftKB)
Pup Joint	2 3/8			2	20.00	36.1	
EUE 8rd Tubing	2 3/8	4.70	J-55	230	7,471.35	7,507.4	
Pump Seating Nipple	2 3/8	1.10	J-55	1	1.10	7,508.5	
Notched collar	2 3/8	4.70	J-55	1	0.50	7,509.0	

## Perforation Data

Zone	Bnch/St g	Entered Shot Total	Top (ftKB)	Btm (ftKB)	Date
NIOBRARA, ORIGINAL HOLE		24	7,222.0	7,234.0	7/25/2012
NIOBRARA, ORIGINAL HOLE		24	7,348.0	7,360.0	7/25/2012
CODELL, ORIGINAL HOLE		64	7,526.0	7,542.0	8/17/2006

## Stimulations & Treatments

Date	Zone	Primary Job Type
9/6/2006	CODELL, ORIGINAL HOLE	DRILLING/COMPLETION - ORIGINAL
Technical Result	Tech Result Details	Tech Result Note

Comment

Date	Zone	Primary Job Type
7/25/2012	CODELL, ORIGINAL HOLE	RE-FRAC & RECOMPLETE
Technical Result	Tech Result Details	Tech Result Note

Success  
According to Plan

Comment

**Well Name: MOBILE PREMIX I35-01**

DEVIATED - ORIGINAL HOLE, 8/23/2012 10:36:13 AM

**Stimulations & Treatments**

Date 7/26/2012	Zone NIOBRARA, ORIGINAL HOLE	Primary Job Type RE-FRAC & RECOMPLETE
Technical Result Success	Tech Result Details According to Plan	Tech Result Note
Comment		

**Other In Hole**

Run Date	Des	OD (in)	Top (ftKB)	Btm (ftKB)

**Logs**

Date	Type	Top (ftKB)	Btm (ftKB)
7/18/2006	COMPENSATED DENSITY	2,000.0	7,664.0
7/18/2006	INDUCTION	521.0	7,684.0
8/10/2006	CBL/CCL/GR	2,150.0	7,615.0

