

WELL LOCATION PLAT

ConocoPhillips Company

2011 Alum. Cap. 0.3' High
 Lot: 38.651342°
 Long: 104.509794°
T5S, R64W, 6th P.M.
 2012 Pk. Alum. Cap. 0.5' High
 Lot: 38.651028°
 Long: 104.491056°
 2012 UELS Alum. Cap. 0.5' High
 Lot: 38.643785°
 Long: 104.491237°

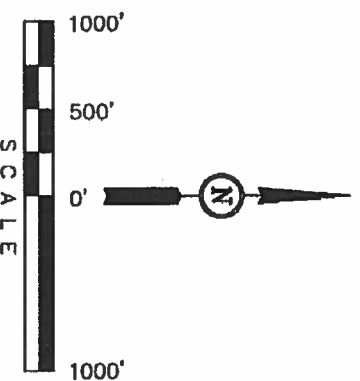
Well location, TEBO #1-1H, located as shown in LOT 1 of Section 1, T5S, R64W, 6th P.M., Arapahoe County, Colorado.

BASIS OF ELEVATION

BENCHMARK 374 LOCATED ON THE SECTION LINE BETWEEN SECTIONS 12 & 13, T5S, R64W, 6th P.M., TAKEN FROM 1988 PUBLISHED DATUM BY THE UNITED STATES DEPARTMENT OF THE INTERIOR, GEOLOGICAL SURVEY AS BEING 6054.61 FEET.

BASIS OF BEARINGS

BASIS OF BEARINGS IS A G.P.S. OBSERVATION.



CERTIFICATE

THIS IS TO CERTIFY THAT THE ABOVE PLAT WAS PREPARED FROM FIELD NOTES OF ACTUAL SURVEYS MADE BY ME OR UNDER MY SUPERVISION AND THAT THE SAME ARE TRUE AND CORRECT TO THE BEST OF MY KNOWLEDGE AND BELIEF.

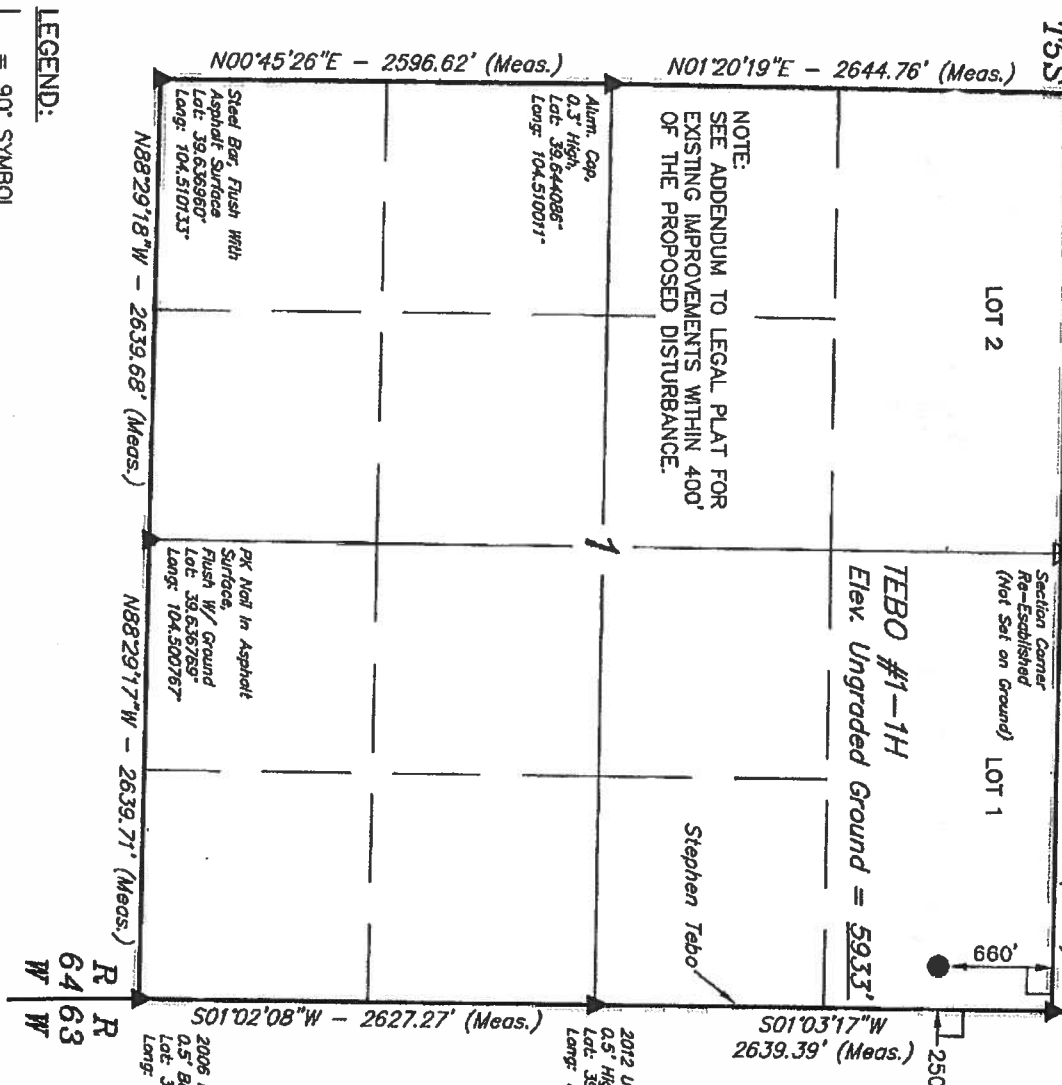
REGISTERED LAND SURVEYOR
 REGISTRATION NO. 12345
 STATE OF COLORADO
 06-27-12

UTAH ENGINEERING & LAND SURVEYING
 85 SOUTH 200 EAST - VERNAL, UTAH 84078
 (435) 789-1017

SCALE 1" = 1000'
 DATE SURVEYED: 06-12-12
 DATE DRAWN: 06-25-12

PARTY J.H. C.M. J.M.H.
 REFERENCES G.L.O. PLAT

WEATHER WARM
 FILE ConocoPhillips Company



LEGEND:

- 90° SYMBOL
- PROPOSED WELL HEAD.
- SECTION CORNERS LOCATED
- SECTION CORNERS
- RE-ESTABLISHED. (Not Set on Ground.)

NAD 83 (TARGET BOTTOM HOLE)	NAD 83 (SURFACE LOCATION)
LATITUDE = 39°38'58.21" (39.648503)	LATITUDE = 39°38'57.24" (39.648233)
LONGITUDE = 104°30'29.57" (104.508214)	LONGITUDE = 104°29'31.15" (104.491986)
NAD 27 (TARGET BOTTOM HOLE)	NAD 27 (SURFACE LOCATION)
LATITUDE = 39°38'58.28" (39.649517)	LATITUDE = 39°38'57.25" (39.648247)
LONGITUDE = 104°30'27.70" (104.507694)	LONGITUDE = 104°29'29.26" (104.491467)

PDOP = 1.3