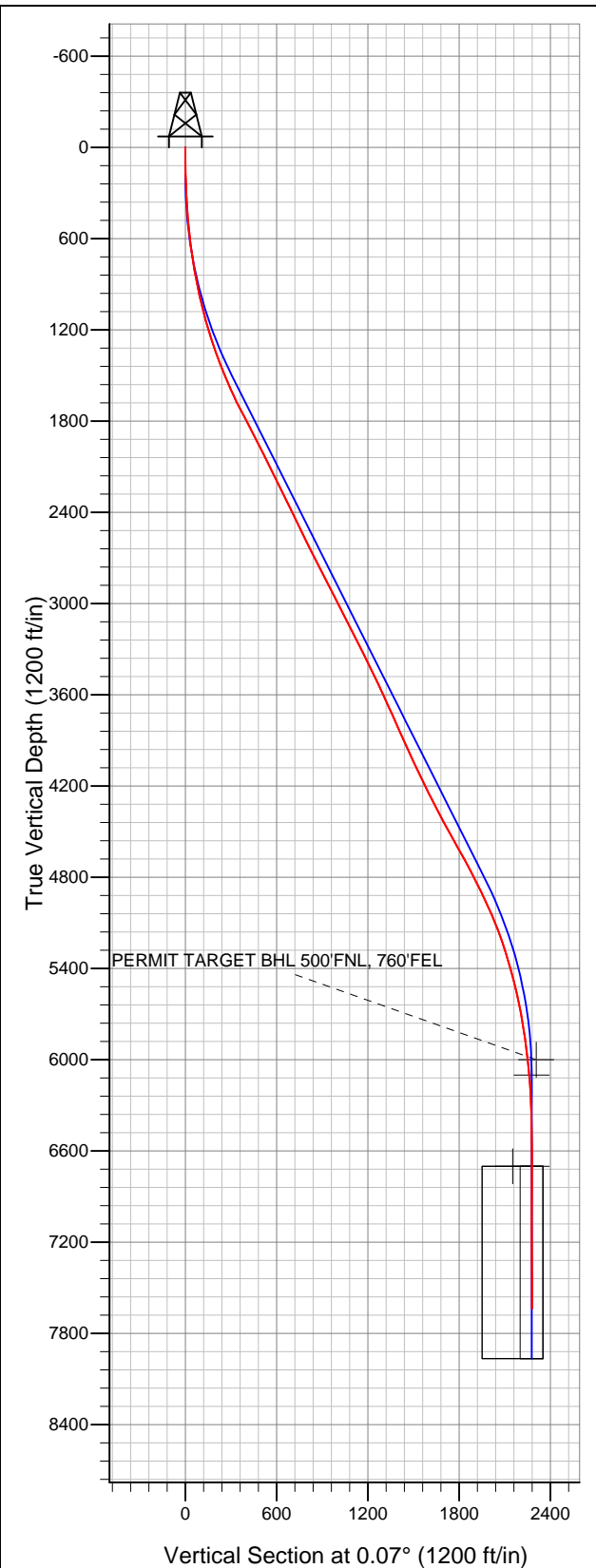


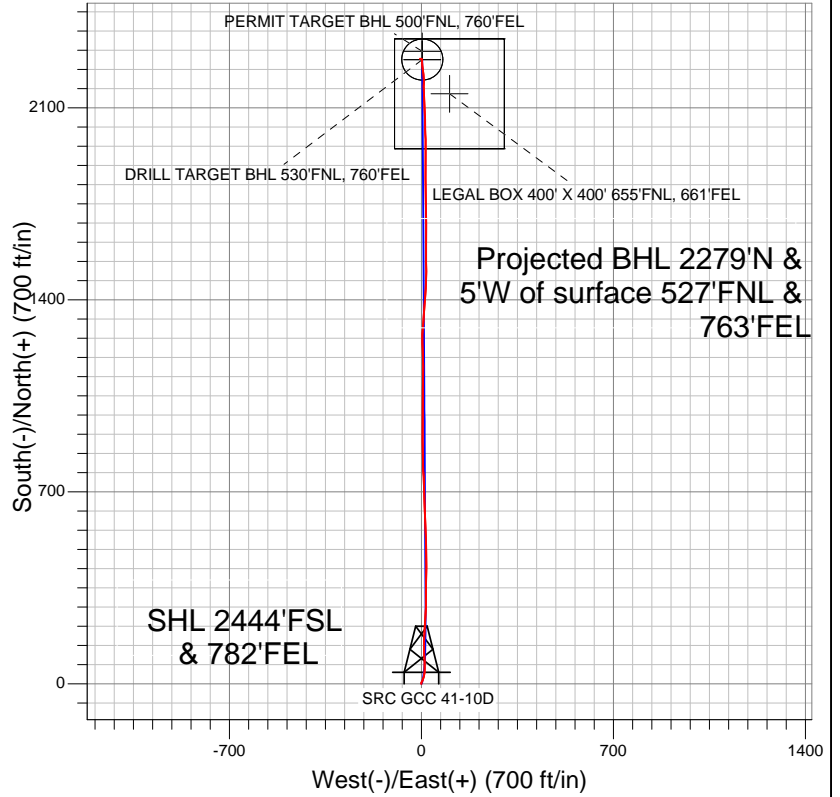
# Well Name: SRC GCC 41-10D

Surface Location: SRC Aims/GCC Pad Sec.10-T5N-R66W  
 North American Datum 1983 US State Plane 1983Colorado Northern Zone  
 Ground Elevation: 4858.0

+N/-S	+E/-W	Northing	Easting	Latitude	Longitude	Slot
0.0	0.0	1394376.69	3206304.72	40.413600	-104.759099	
		Original Well Elev	WELL @ 4871.0ft (Original Well Elev)			



## Synergy Resources



### LEGEND

- Survey #1
- △ SRC GCC 41-10D, Wellbore #1, Plan #2 (3-27-12) R V0
- Wellbore #1

## Final Survey Plot

Projected Final Survey -  
 8115'MD & 7636'TVD @ 2279'VS  
 0.60 deg Inc 293.10 deg AZ

Project: SEC.10-T5N-R66W  
 Site: SRC Aims/GCC Pad Sec.10-T5N-R66W  
 Well: SRC GCC 41-10D  
 Plan: Wellbore #1



## **Synergy Resources**

**SEC.10-T5N-R66W**

**SRC Aims/GCC Pad Sec.10-T5N-R66W**

**SRC GCC 41-10D**

**Wellbore #1**

**Survey: Survey #1**

## **Standard Survey Report**

**05 April, 2012**

<b>Company:</b>	Synergy Resources	<b>Local Co-ordinate Reference:</b>	Well SRC GCC 41-10D
<b>Project:</b>	SEC.10-T5N-R66W	<b>TVD Reference:</b>	WELL @ 4871.0ft (Original Well Elev)
<b>Site:</b>	SRC Aims/GCC Pad Sec.10-T5N-R66W	<b>MD Reference:</b>	WELL @ 4871.0ft (Original Well Elev)
<b>Well:</b>	SRC GCC 41-10D	<b>North Reference:</b>	True
<b>Wellbore:</b>	Wellbore #1	<b>Survey Calculation Method:</b>	Minimum Curvature
<b>Design:</b>	Wellbore #1	<b>Database:</b>	Landmark

<b>Project</b>	SEC.10-T5N-R66W, Weld County, Colorado		
<b>Map System:</b>	US State Plane 1983	<b>System Datum:</b>	Mean Sea Level
<b>Geo Datum:</b>	North American Datum 1983		Using Well Reference Point
<b>Map Zone:</b>	Colorado Northern Zone		Using geodetic scale factor

<b>Site</b>	SRC Aims/GCC Pad Sec.10-T5N-R66W				
<b>Site Position:</b>		<b>Northing:</b>	1,394,413.34 ft	<b>Latitude:</b>	40.413700
<b>From:</b>	Lat/Long	<b>Easting:</b>	3,206,329.28 ft	<b>Longitude:</b>	-104.759010
<b>Position Uncertainty:</b>	0.0 ft	<b>Slot Radius:</b>	"	<b>Grid Convergence:</b>	0.48 °

Well	SRC GCC 41-10D					
Well Position	+N/-S	0.0 ft	Northing:	1,394,376.69 ft	Latitude:	40.41360
	+E/-W	0.0 ft	Easting:	3,206,304.72 ft	Longitude:	-104.75909
Position Uncertainty		0.0 ft	Wellhead Elevation:	ft	Ground Level:	4,858.0 ft

Wellbore	Wellbore #1				
Magnetics	Model Name	Sample Date	Declination (°)	Dip Angle (°)	Field Strength (nT)
	IGRF2010	3/27/2012	8.76	67.04	53,056

Design	Wellbore #1				
Audit Notes:					
Version:	1.0	Phase:	ACTUAL	Tie On Depth:	0.0
Vertical Section:	Depth From (TVD) (ft)	+N/-S (ft)	+E/-W (ft)	Direction (°)	
	6,100.0	0.0	0.0	0.07	

Survey Program		Date	4/5/2012		
From (ft)	To (ft)	Survey (Wellbore)	Tool Name	Description	
80.0	8,115.0	Survey #1 (Wellbore #1)	MWD	MWD - Standard	

Survey	Wellbore Data									
	Measured Depth (ft)	Inclination (°)	Azimuth (°)	Vertical Depth (ft)	+N-S (ft)	+E-W (ft)	Vertical Section (ft)	Dogleg Rate (°/100ft)	Build Rate (°/100ft)	Turn Rate (°/100ft)
Main Wellbore	0.0	0.00	0.00	0.0	0.0	0.0	0.0	0.00	0.00	0.00
	80.0	0.60	339.20	80.0	0.4	-0.1	0.4	0.75	0.75	0.00
	171.0	0.90	319.30	171.0	1.4	-0.8	1.4	0.43	0.33	-21.87
	261.0	2.00	13.30	261.0	3.4	-0.9	3.4	1.82	1.22	60.00
	355.0	3.30	31.50	354.9	7.3	0.9	7.3	1.63	1.38	19.36
	447.0	5.10	22.80	446.6	13.4	3.9	13.4	2.07	1.96	-9.46
	538.0	6.30	17.80	537.2	21.9	7.0	21.9	1.43	1.32	-5.49
	630.0	8.00	8.70	628.4	33.0	9.5	33.0	2.21	1.85	-9.89
	786.0	9.40	359.60	782.7	56.5	11.0	56.5	1.26	0.90	-5.83
	879.0	10.50	0.80	874.3	72.5	11.1	72.5	1.20	1.18	1.29
	973.0	12.20	358.50	966.4	91.0	11.0	91.0	1.87	1.81	-2.45
	1,067.0	14.20	357.80	1,057.9	112.5	10.3	112.5	2.13	2.13	-0.74
	1,161.0	15.90	357.80	1,148.7	136.9	9.3	136.9	1.81	1.81	0.00

<b>Company:</b>	Synergy Resources	<b>Local Co-ordinate Reference:</b>	Well SRC GCC 41-10D
<b>Project:</b>	SEC.10-T5N-R66W	<b>TVD Reference:</b>	WELL @ 4871.0ft (Original Well Elev)
<b>Site:</b>	SRC Aims/GCC Pad Sec.10-T5N-R66W	<b>MD Reference:</b>	WELL @ 4871.0ft (Original Well Elev)
<b>Well:</b>	SRC GCC 41-10D	<b>North Reference:</b>	True
<b>Wellbore:</b>	Wellbore #1	<b>Survey Calculation Method:</b>	Minimum Curvature
<b>Design:</b>	Wellbore #1	<b>Database:</b>	Landmark

Survey										
Measured Depth (ft)	Inclination (°)	Azimuth (°)	Vertical Depth (ft)	+N/-S (ft)	+E/-W (ft)	Vertical Section (ft)	Dogleg Rate (°/100ft)	Build Rate (°/100ft)	Turn Rate (°/100ft)	
1,254.0	17.10	1.00	1,237.9	163.3	9.1	163.3	1.62	1.29	3.44	
1,348.0	18.70	5.00	1,327.3	192.1	10.6	192.1	2.15	1.70	4.26	
1,442.0	21.60	4.30	1,415.6	224.4	13.2	224.4	3.10	3.09	-0.74	
1,535.0	22.60	2.90	1,501.7	259.3	15.4	259.3	1.22	1.08	-1.51	
1,629.0	24.10	359.60	1,588.0	296.5	16.2	296.5	2.12	1.60	-3.51	
1,723.0	25.70	0.30	1,673.3	336.1	16.2	336.1	1.73	1.70	0.74	
1,816.0	28.40	1.00	1,756.1	378.4	16.7	378.4	2.92	2.90	0.75	
1,910.0	27.90	0.80	1,839.0	422.7	17.4	422.7	0.54	-0.53	-0.21	
2,004.0	27.00	359.60	1,922.4	466.1	17.5	466.1	1.12	-0.96	-1.28	
2,098.0	26.70	359.20	2,006.3	508.5	17.1	508.5	0.37	-0.32	-0.43	
2,191.0	26.10	356.00	2,089.6	549.8	15.4	549.8	1.66	-0.65	-3.44	
2,285.0	25.90	357.30	2,174.1	590.9	13.0	591.0	0.64	-0.21	1.38	
2,379.0	26.30	358.50	2,258.5	632.3	11.4	632.3	0.70	0.43	1.28	
2,472.0	26.60	358.30	2,341.7	673.7	10.3	673.7	0.34	0.32	-0.22	
2,566.0	25.50	358.90	2,426.2	714.9	9.3	715.0	1.20	-1.17	0.64	
2,660.0	25.80	356.40	2,510.9	755.6	7.6	755.6	1.19	0.32	-2.66	
2,753.0	26.70	358.10	2,594.3	796.7	5.6	796.7	1.26	0.97	1.83	
2,847.0	26.80	358.50	2,678.3	839.0	4.4	839.0	0.22	0.11	0.43	
2,941.0	27.30	0.10	2,762.0	881.7	3.9	881.7	0.94	0.53	1.70	
3,035.0	27.50	0.30	2,845.5	925.0	4.0	925.0	0.23	0.21	0.21	
3,128.0	27.00	359.60	2,928.1	967.5	4.0	967.5	0.64	-0.54	-0.75	
3,222.0	25.80	0.30	3,012.3	1,009.3	3.9	1,009.3	1.32	-1.28	0.74	
3,316.0	27.90	0.60	3,096.2	1,051.8	4.3	1,051.8	2.24	2.23	0.32	
3,410.0	26.90	1.80	3,179.6	1,095.0	5.2	1,095.0	1.22	-1.06	1.28	
3,503.0	25.80	0.40	3,263.0	1,136.3	6.0	1,136.3	1.36	-1.18	-1.51	
3,597.0	26.70	357.80	3,347.3	1,177.9	5.3	1,177.9	1.55	0.96	-2.77	
3,691.0	26.70	358.10	3,431.3	1,220.1	3.8	1,220.1	0.14	0.00	0.32	
3,784.0	25.50	0.10	3,514.8	1,261.0	3.1	1,261.0	1.60	-1.29	2.15	
3,878.0	24.50	5.20	3,600.0	1,300.6	4.9	1,300.6	2.53	-1.06	5.43	
3,972.0	24.60	3.20	3,685.5	1,339.6	7.8	1,339.6	0.89	0.11	-2.13	
4,066.0	22.90	5.90	3,771.5	1,377.3	10.8	1,377.3	2.15	-1.81	2.87	
4,159.0	24.40	3.60	3,856.7	1,414.5	13.8	1,414.5	1.89	1.61	-2.47	
4,253.0	25.00	2.90	3,942.1	1,453.7	16.1	1,453.7	0.71	0.64	-0.74	
4,347.0	25.90	359.90	4,027.0	1,494.1	17.0	1,494.1	1.67	0.96	-3.19	
4,440.0	25.90	359.60	4,110.7	1,534.7	16.9	1,534.7	0.14	0.00	-0.32	
4,534.0	25.10	0.40	4,195.5	1,575.2	16.8	1,575.2	0.93	-0.85	0.85	
4,628.0	26.30	359.90	4,280.2	1,615.9	16.9	1,615.9	1.30	1.28	-0.53	
4,721.0	27.60	0.40	4,363.1	1,658.1	17.1	1,658.1	1.42	1.40	0.54	
4,815.0	28.60	358.30	4,446.0	1,702.3	16.5	1,702.3	1.50	1.06	-2.23	
4,909.0	29.40	358.70	4,528.2	1,747.9	15.4	1,747.9	0.88	0.85	0.43	
5,003.0	29.20	359.70	4,610.2	1,793.9	14.7	1,793.9	0.56	-0.21	1.06	
5,096.0	29.10	359.40	4,691.4	1,839.2	14.4	1,839.2	0.19	-0.11	-0.32	
5,190.0	27.30	0.80	4,774.3	1,883.6	14.4	1,883.6	2.04	-1.91	1.49	
5,284.0	25.90	359.90	4,858.3	1,925.7	14.7	1,925.7	1.55	-1.49	-0.96	
5,377.0	25.10	359.90	4,942.3	1,965.7	14.6	1,965.7	0.86	-0.86	0.00	
5,471.0	23.70	357.80	5,027.9	2,004.5	13.9	2,004.5	1.75	-1.49	-2.23	
5,565.0	22.80	359.40	5,114.2	2,041.6	12.9	2,041.6	1.17	-0.96	1.70	
5,659.0	19.10	356.90	5,202.0	2,075.2	11.9	2,075.2	4.05	-3.94	-2.66	
5,753.0	17.00	359.40	5,291.4	2,104.3	10.9	2,104.3	2.38	-2.23	2.66	
5,846.0	16.40	356.40	5,380.4	2,131.0	10.0	2,131.0	1.13	-0.65	-3.23	
5,940.0	14.40	356.60	5,471.1	2,155.9	8.4	2,155.9	2.13	-2.13	0.21	
6,034.0	13.00	0.60	5,562.4	2,178.2	7.9	2,178.2	1.80	-1.49	4.26	
6,128.0	11.30	359.90	5,654.3	2,197.9	8.0	2,198.0	1.82	-1.81	-0.74	
6,221.0	9.80	354.50	5,745.7	2,214.9	7.2	2,214.9	1.93	-1.61	-5.81	

<b>Company:</b>	Synergy Resources	<b>Local Co-ordinate Reference:</b>	Well SRC GCC 41-10D
<b>Project:</b>	SEC.10-T5N-R66W	<b>TVD Reference:</b>	WELL @ 4871.0ft (Original Well Elev)
<b>Site:</b>	SRC Aims/GCC Pad Sec.10-T5N-R66W	<b>MD Reference:</b>	WELL @ 4871.0ft (Original Well Elev)
<b>Well:</b>	SRC GCC 41-10D	<b>North Reference:</b>	True
<b>Wellbore:</b>	Wellbore #1	<b>Survey Calculation Method:</b>	Minimum Curvature
<b>Design:</b>	Wellbore #1	<b>Database:</b>	Landmark

Survey									
Measured Depth (ft)	Inclination (°)	Azimuth (°)	Vertical Depth (ft)	+N/-S (ft)	+E/-W (ft)	Vertical Section (ft)	Dogleg Rate (°/100ft)	Build Rate (°/100ft)	Turn Rate (°/100ft)
6,315.0	8.40	354.80	5,838.5	2,229.7	5.8	2,229.7	1.49	-1.49	0.32
6,409.0	6.50	355.70	5,931.7	2,241.9	4.8	2,241.9	2.03	-2.02	0.96
6,484.0	6.42	352.44	6,006.3	2,250.3	3.9	2,250.3	0.50	-0.11	-4.35
<b>PERMIT TARGET BHL 500'FNL, 760'FEL</b>									
6,503.0	6.40	351.60	6,025.1	2,252.4	3.6	2,252.4	0.50	-0.09	-4.41
6,579.9	5.49	350.24	6,101.6	2,260.2	2.4	2,260.2	1.20	-1.18	-1.76
<b>DRILL TARGET BHL 530'FNL, 760'FEL</b>									
6,596.0	5.30	349.90	6,117.6	2,261.7	2.1	2,261.7	1.20	-1.18	-2.13
6,690.0	3.60	355.50	6,211.4	2,268.9	1.1	2,268.9	1.86	-1.81	5.96
6,784.0	2.20	15.90	6,305.2	2,273.6	1.4	2,273.6	1.83	-1.49	21.70
6,878.0	0.40	18.20	6,399.2	2,275.7	2.0	2,275.7	1.92	-1.91	2.45
6,971.0	0.40	346.70	6,492.2	2,276.3	2.0	2,276.3	0.23	0.00	-33.87
7,065.0	0.20	353.00	6,586.2	2,276.8	1.9	2,276.8	0.22	-0.21	6.70
7,159.0	0.40	306.60	6,680.2	2,277.1	1.6	2,277.1	0.32	0.21	-49.36
7,178.0	0.37	301.74	6,699.2	2,277.2	1.5	2,277.2	0.23	-0.15	-25.62
<b>LEGAL BOX 400' X 400' 655'FNL, 661'FEL</b>									
7,178.8	0.37	301.51	6,700.0	2,277.2	1.5	2,277.2	0.23	-0.14	-27.58
<b>TARGET CIRCLE 530'FNL &amp; 760'FEL</b>									
7,253.0	0.30	275.20	6,774.2	2,277.3	1.1	2,277.3	0.23	-0.10	-35.46
7,346.0	0.50	296.60	6,867.2	2,277.6	0.5	2,277.6	0.26	0.22	23.01
7,440.0	0.50	283.60	6,961.2	2,277.8	-0.3	2,277.8	0.12	0.00	-13.83
7,534.0	0.40	260.90	7,055.2	2,277.9	-1.0	2,277.9	0.22	-0.11	-24.15
7,628.0	0.40	248.40	7,149.2	2,277.7	-1.6	2,277.7	0.09	0.00	-13.30
7,721.0	0.30	262.20	7,242.2	2,277.6	-2.2	2,277.5	0.14	-0.11	14.84
7,815.0	0.40	304.70	7,336.2	2,277.7	-2.7	2,277.7	0.29	0.11	45.21
7,909.0	0.60	298.40	7,430.2	2,278.1	-3.4	2,278.1	0.22	0.21	-6.70
8,003.0	0.60	299.80	7,524.2	2,278.6	-4.2	2,278.6	0.02	0.00	1.49
8,065.0	0.60	293.10	7,586.2	2,278.9	-4.8	2,278.9	0.11	0.00	-10.81
8,115.0	0.60	293.10	7,636.2	2,279.1	-5.3	2,279.1	0.00	0.00	0.00

Checked By: _____	Approved By: _____	Date: _____
-------------------	--------------------	-------------