

2011 Alum. Cop,
0.3' High
Lot: 39.651342"
Long: 104.509794"

T4S 54

Long: 588°45'48"E - 2639.37' (Mars)

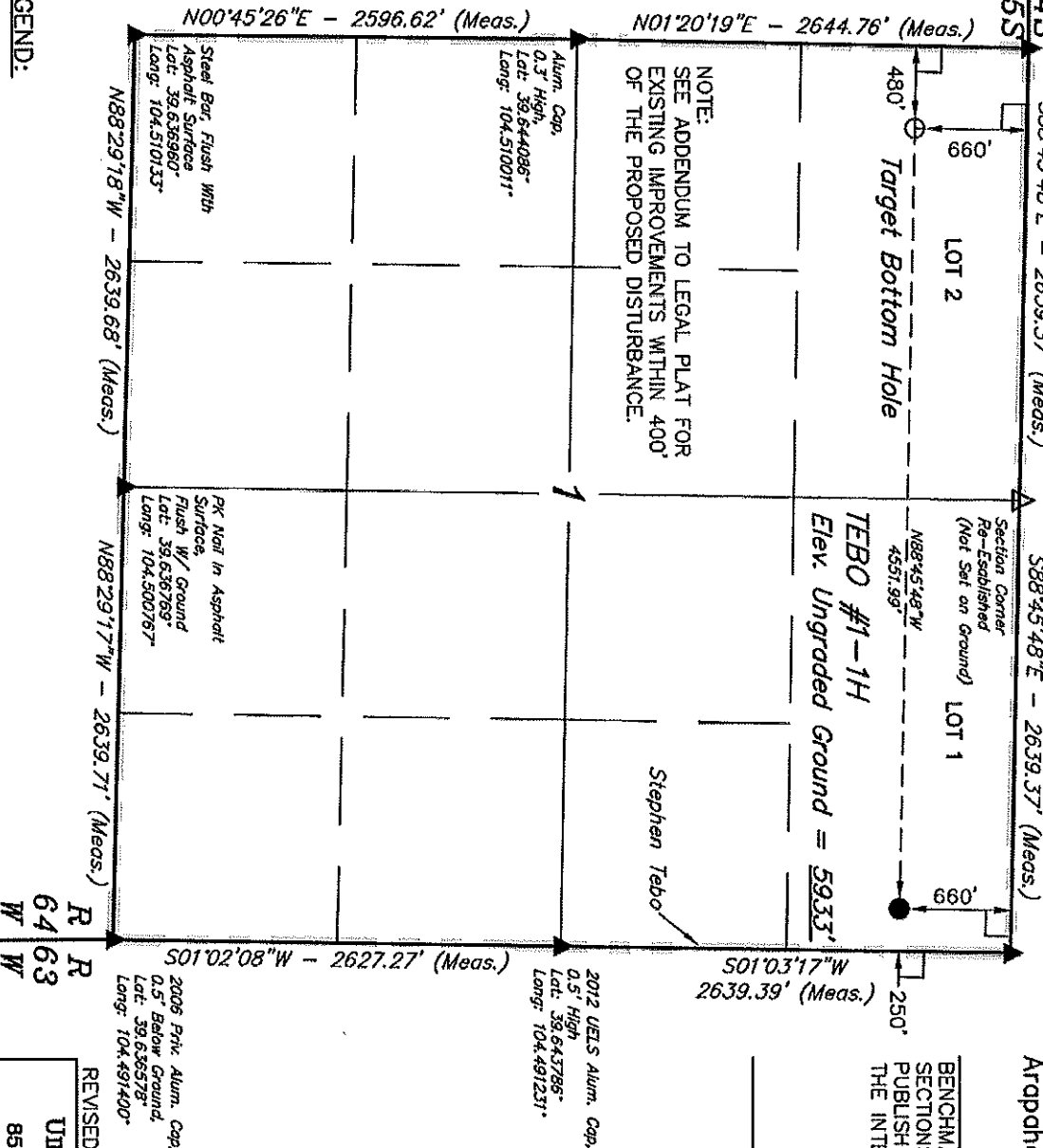
2012 Priv. Alum. Cop.
0.5' High
Lot: 39.651028*

Lang: 104.491056°

Well location, TEBO #1-1H, located as shown in LOT 1 of Section 1, T5S, R64W, 6th P.M., Arapahoe County, Colorado.

BENCHMARK 374 LOCATED ON THE SECTION LINE BETWEEN SECTIONS 12 & 13, T5S, R64W, 6th. P.M., TAKEN FROM 1988B PUBLISHED DATUM BY THE UNITED STATES DEPARTMENT OF THE INTERIOR GEOLOGICAL SURVEY AS BEING 6054.61 FEET.

BASIS OF BEARINGS IS A G.P.S. OBSERVATION.



NOTE:
SEE ADDENDUM TO LEGAL PLAT FOR
EXISTING IMPROVEMENTS WITHIN 400'
OF THE PROPOSED DISTURBANCE.

TEBO #1-1H
Elev. Ungraded Ground = 5933'

Stephen Tebo

2012 UELS Alumni. Cap

0.5' High
Lat: 39.643786°
Long: 104.491231°

Alum. Cop,
0.3' High,
Lat: 39.644086°
Long: 104.510011°

$N00^{\circ}45'26''E - 2596.62'$ (Meas.)

N01°20'19"E - 2644.76' (Meas.)

Bar, Flush With
Self Surface
39.636960°
104.510133°
N88°29'18"W

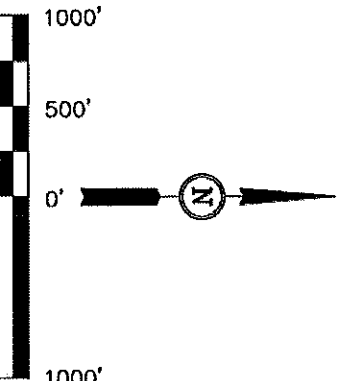
PK Nail in Asphalt
Surface,
Flush w/ Ground
Lat: 39.636769°

N88°29'18"W - 2639.68' (Meas.)

N88°29'17"W - 2639.71' (Meas.)

S01°02'08"W - 2627.27' (Meas.)

S01°03'17"W
2639.39' (Mea.)



CERTIFICATE

THIS IS TO CERTIFY THAT THE ABOVE ~~PLAN~~ ^{EXHIBIT} WAS PREPARED FROM FIELD NOTES OF ACTUAL SURVEYS MADE BY ME OR UNDER MY SUPERVISION AND THAT THE SAME ARE TRUE AND CORRECT TO THE BEST OF MY KNOWLEDGE AND BELIEF.

REGISTERED AND EXPIRATION
REGISTRATION NO. 17292
STATE OF COLORADO

REVISÉD: 06-29-12

UNTAH ENGINEERING & LAND SURVEYING
85 SOUTH 200 EAST - VERNAL, UTAH 84078

(435) 789-1017

└ = 90° SYMBOL
● = PROPOSED WELL HEAD.

SECTION CORNERS LOCATED

SECTION CORNERS

RE-ESTABLISHED. (Not Set on Ground.)

NAD 83 (TARGET BOTTOM HOLE)	NAD 83 (SURFACE LOCATION)
LATITUDE = 39.38.55.21" (39.649503)	LATITUDE = 39.38.57.24" (39.649233)
LONGITUDE = 106.30.29.32" (104.508144)	LONGITUDE = 104.72.3.15" (104.491986)
NAD 27 (TARGET BOTTOM HOLE)	NAD 27 (SURFACE LOCATION)
LATITUDE = 39.38.55.26" (39.649517)	LATITUDE = 39.38.57.28" (39.649247)
LONGITUDE = 106.30.27.45" (104.507825)	LONGITUDE = 104.72.51.29" (104.491467)

PDOP = 1.2

SCALE

DATE SURVEYED:	DATE DRAWN:
----------------	-------------

1	1000
PARTY	

00-12-12	REFERENCES
----------	------------

J.H. C.M. J.M.H.

G.L.O. PLAT

WEATHER

FILE

WARM

ConocoPhillips Company

2011 Alum. Cap.
0.3' High
Lot: 39.651342°
Long: 104.503794°

SECTION BREAKDOWN T5S, R64W, 6th P.M.

2012 Priv. Alum. Cap.
0.5' High
Lot: 39.651028°
Long: 104.491056°

ConocoPhillips Company
Well location, TEBO #1-1H, located as shown in
LOT 1 of Section 1, T5S, R64W, 6th P.M.,
Apache County, Colorado.

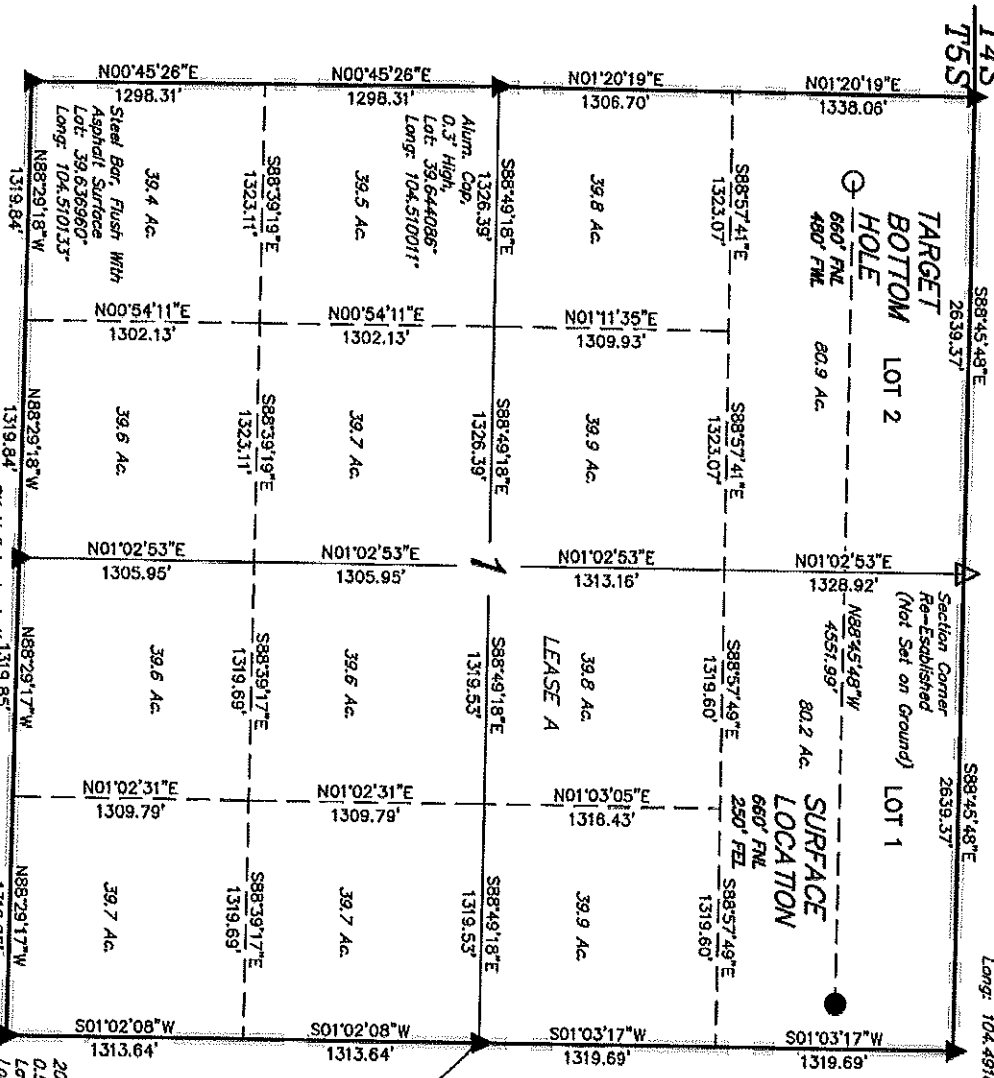
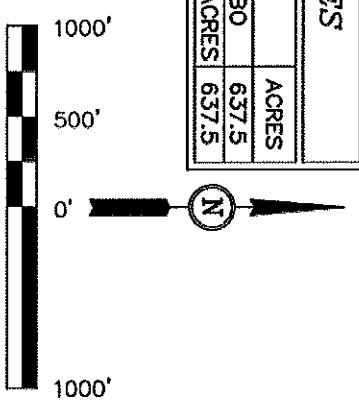
BASIS OF ELEVATION

BENCHMARK 374 LOCATED ON THE SECTION LINE BETWEEN
SECTIONS 12 & 13, T5S, R64W, 6th P.M., TAKEN FROM 1988
PUBLISHED DATUM BY THE UNITED STATES DEPARTMENT OF
THE INTERIOR, GEOLOGICAL SURVEY AS BEING 6054.61 FEET.

BASIS OF BEARINGS

BASIS OF BEARINGS IS A G.P.S. OBSERVATION.

ACREAGES		
LEASE	OWNER	ACRES
A	STEPHEN TEBO	637.5
TOTAL GROSS ACRES		637.5



REVISED: 06-29-12

UTAH ENGINEERING & LAND SURVEYING
85 SOUTH 200 EAST - VERNAL, UTAH 84078
(435) 789-1017

SCALE 1" = 1000'
DATE SURVEYED: 06-12-12
DATE DRAWN: 06-25-12

PARTY J.H. C.M. J.M.H.
REFERENCES G.L.O. PLAT
WEATHER WARM
FILE ConocoPhillips Company

LEGEND:

- 90° SYMBOL
- PROPOSED WELL HEAD.
- SECTION CORNERS LOCATED
- SECTION CORNERS
- RE-ESTABLISHED. (Not Set on Ground.)

NAD 83 (TARGET BOTTOM HOLE)	
LATITUDE = 39.3858.21° (39.649503)	LATITUDE = 39.3857.24° (39.649233)
LONGITUDE = 104.3079.32° (104.508144)	LONGITUDE = 104.2931.15° (104.491986)
NAD 27 (SURFACE LOCATION)	
LATITUDE = 39.3858.26° (39.649517)	LATITUDE = 39.3857.29° (39.649247)
LONGITUDE = 104.3027.45° (104.507625)	LONGITUDE = 104.2929.28° (104.491467)

THIS IS TO CERTIFY THAT THE ABOVE PLATONAS PREPARED FROM
FIELD NOTES OF ACTUAL SURVEYS MADE BY ME OR UNDER MY
SUPERVISION AND THAT THE SAME ARE TRUE AND CORRECT TO THE
BEST OF MY KNOWLEDGE AND BELIEF.

CERTIFICATE

REGISTERED LAND SURVEYOR
STATE OF COLORADO
07-02-12



ConocoPhillips Company

ADDENDUM TO LEGAL PLAT FOR

TEBO #1-1H

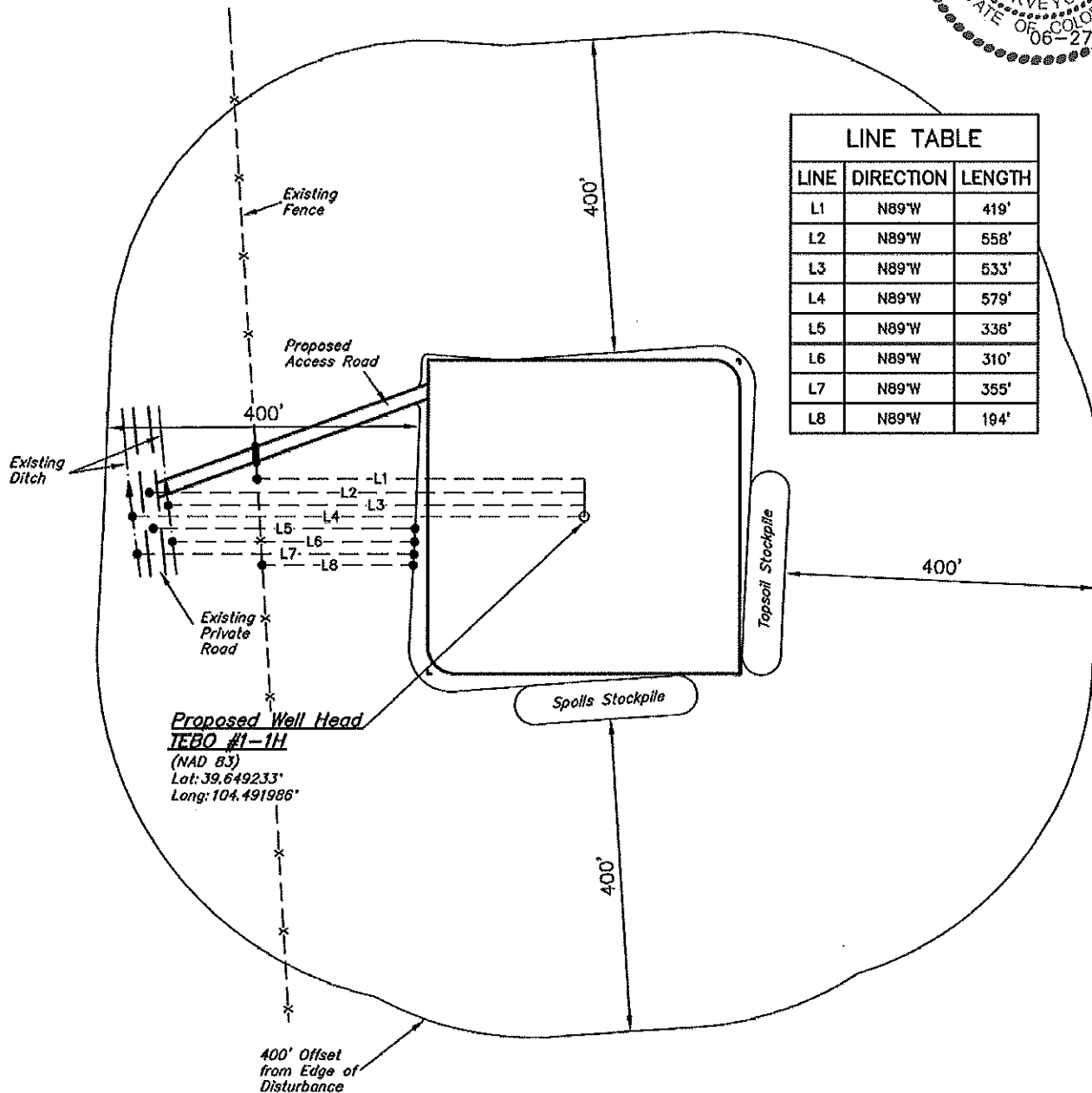
SECTION 1, T5S, R64W, 6th P.M.

660' FNL 250' FEL

SCALE: 1" = 200'

DATE: 06-25-12

DRAWN BY: J.M.H.



UINTAH ENGINEERING & LAND SURVEYING

85 So. 200 East • Vernal, Utah 84078 • (435) 789-1017