

WELL LOCATION PLAT

2011 Alum. Cap.
0.3' High
Lot: 38.551342°
Long: 104.509794°

T5S, R64W, 6th P.M.

2012 Priv. Alum. Cap.
0.5' High
Lot: 38.651028°
Long: 104.491056°

T4S
S88°45'48"E - 2639.37' (Meas.)

LOT 2

Section Corner
Re-Established
(Not Set on Ground)

LOT 1

Well location, TEBO #1-1H, located as shown in
LOT 1 of Section 1, T5S, R64W, 6th P.M.,
Arapahoe County, Colorado.

BASIS OF ELEVATION

BENCHMARK 374 LOCATED ON THE SECTION LINE BETWEEN
SECTIONS 12 & 13, T5S, R64W, 6th P.M., TAKEN FROM 1988
PUBLISHED DATUM BY THE UNITED STATES DEPARTMENT OF
THE INTERIOR, GEOLOGICAL SURVEY AS BEING 6054.61 FEET.

BASIS OF BEARINGS

BASIS OF BEARINGS IS A G.P.S. OBSERVATION.

NOTE:
SEE ADDENDUM TO LEGAL PLAT FOR
EXISTING IMPROVEMENTS WITHIN 400'
OF THE PROPOSED DISTURBANCE.

Stephen Tebo

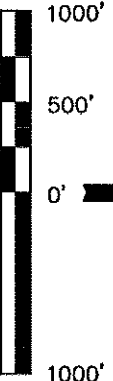
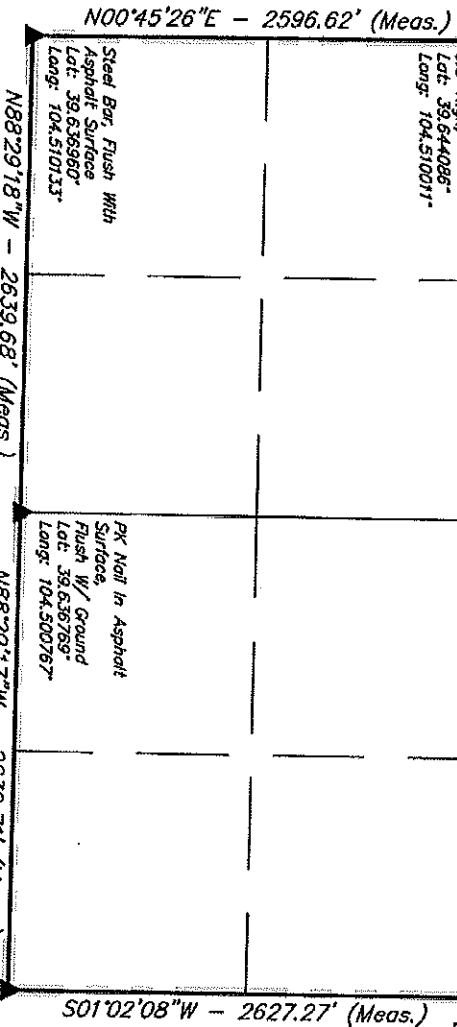
2012 UELS Alum. Cap.
0.5' High
Lot: 38.643786°
Long: 104.491231°

2006 Priv. Alum. Cap.
0.5' Below Ground,
Lot: 38.636578°
Long: 104.491400°

Alum. Cap.
0.3' High,
Lot: 38.644086°
Long: 104.510011°

Steel Bar, Flush With
Asphalt Surface
Lot: 38.636960°
Long: 104.510133°

PK Nail in Asphalt
Surface
Flush w/ Ground
Lot: 38.636785°
Long: 104.500767°



CERTIFICATE

THIS IS TO CERTIFY THAT THE ABOVE PLAT WAS PREPARED FROM
FIELD NOTES OF ACTUAL SURVEYS MADE BY ME OR UNDER MY
SUPERVISION AND THAT THE SAME ARE TRUE AND CORRECT TO THE
BEST OF MY KNOWLEDGE AND BELIEF.

REGISTERED LAND SURVEYOR
RENEWAL EXPIRATION 06-25-12
STATE OF COLORADO

UNTARH ENGINEERING & LAND SURVEYING
85 SOUTH 200 EAST - VERNAL, UTAH 84078
(435) 789-1017

R R
64 63
W W

PDOP = 1.3

SCALE 1" = 1000'

PARTY J.H. C.M. J.M.H.

WEATHER WARM

FILE ConocoPhillips Company

DATE SURVEYED: 06-12-12

DATE DRAFT: 06-25-12

REFERENCES G.L.O. PLAT

RE-ESTABLISHED. (Not Set on Ground.)

SECTION CORNERS LOCATED

PROPOSED WELL HEAD.

90° SYMBOL

LEGEND:

SECTION CORNERS LOCATED

PROPOSED WELL HEAD.

90° SYMBOL

LEGEND:

SECTION CORNERS LOCATED

PROPOSED WELL HEAD.

90° SYMBOL

LEGEND:

SECTION CORNERS LOCATED

PROPOSED WELL HEAD.

90° SYMBOL

LEGEND:

SECTION CORNERS LOCATED

PROPOSED WELL HEAD.

90° SYMBOL

LEGEND:

SECTION CORNERS LOCATED

PROPOSED WELL HEAD.

90° SYMBOL

LEGEND:

SECTION CORNERS LOCATED

PROPOSED WELL HEAD.

90° SYMBOL

LEGEND:

SECTION CORNERS LOCATED

PROPOSED WELL HEAD.

90° SYMBOL

LEGEND:

SECTION CORNERS LOCATED

PROPOSED WELL HEAD.

90° SYMBOL

LEGEND:

SECTION CORNERS LOCATED

PROPOSED WELL HEAD.

90° SYMBOL

LEGEND:

SECTION CORNERS LOCATED

PROPOSED WELL HEAD.

90° SYMBOL

LEGEND:

SECTION CORNERS LOCATED

PROPOSED WELL HEAD.

90° SYMBOL

LEGEND:

SECTION CORNERS LOCATED

PROPOSED WELL HEAD.

90° SYMBOL

LEGEND:

SECTION CORNERS LOCATED

PROPOSED WELL HEAD.

90° SYMBOL

LEGEND:

SECTION CORNERS LOCATED

PROPOSED WELL HEAD.

90° SYMBOL

LEGEND:

SECTION CORNERS LOCATED

PROPOSED WELL HEAD.

90° SYMBOL

LEGEND:

SECTION CORNERS LOCATED

PROPOSED WELL HEAD.

90° SYMBOL

LEGEND:

SECTION CORNERS LOCATED

PROPOSED WELL HEAD.

90° SYMBOL

LEGEND:

SECTION CORNERS LOCATED

PROPOSED WELL HEAD.

90° SYMBOL

LEGEND:

SECTION CORNERS LOCATED

PROPOSED WELL HEAD.

90° SYMBOL

LEGEND:

SECTION CORNERS LOCATED

PROPOSED WELL HEAD.

90° SYMBOL

LEGEND:

SECTION CORNERS LOCATED

PROPOSED WELL HEAD.

90° SYMBOL

LEGEND:

SECTION CORNERS LOCATED

PROPOSED WELL HEAD.

90° SYMBOL

LEGEND:

SECTION CORNERS LOCATED

PROPOSED WELL HEAD.

90° SYMBOL

LEGEND:

SECTION CORNERS LOCATED

PROPOSED WELL HEAD.

90° SYMBOL

LEGEND:

SECTION CORNERS LOCATED

PROPOSED WELL HEAD.

90° SYMBOL

LEGEND:

SECTION CORNERS LOCATED

PROPOSED WELL HEAD.

90° SYMBOL

LEGEND:

SECTION CORNERS LOCATED

PROPOSED WELL HEAD.

90° SYMBOL

LEGEND:

SECTION CORNERS LOCATED

PROPOSED WELL HEAD.

90° SYMBOL

LEGEND:

SECTION CORNERS LOCATED

PROPOSED WELL HEAD.

90° SYMBOL

LEGEND:

SECTION CORNERS LOCATED

PROPOSED WELL HEAD.

90° SYMBOL

LEGEND:

SECTION CORNERS LOCATED

PROPOSED WELL HEAD.

90° SYMBOL

LEGEND:

SECTION CORNERS LOCATED

PROPOSED WELL HEAD.

90° SYMBOL

LEGEND:

SECTION CORNERS LOCATED

PROPOSED WELL HEAD.

90° SYMBOL

LEGEND:

SECTION CORNERS LOCATED

PROPOSED WELL HEAD.

90° SYMBOL

LEGEND:

SECTION CORNERS LOCATED

PROPOSED WELL HEAD.

90° SYMBOL

LEGEND:

SECTION CORNERS LOCATED

PROPOSED WELL HEAD.

90° SYMBOL

LEGEND:

SECTION CORNERS LOCATED

PROPOSED WELL HEAD.

90° SYMBOL

LEGEND:

SECTION CORNERS LOCATED

PROPOSED WELL HEAD.

90° SYMBOL

LEGEND:

SECTION CORNERS LOCATED

PROPOSED WELL HEAD.

90° SYMBOL

LEGEND:

SECTION CORNERS LOCATED

PROPOSED WELL HEAD.

90° SYMBOL

LEGEND:

SECTION CORNERS LOCATED

PROPOSED WELL HEAD.

90° SYMBOL

LEGEND:

SECTION CORNERS LOCATED

PROPOSED WELL HEAD.

90° SYMBOL

LEGEND:

SECTION CORNERS LOCATED

PROPOSED WELL HEAD.

90° SYMBOL

LEGEND:

SECTION CORNERS LOCATED

PROPOSED WELL HEAD.

90° SYMBOL

LEGEND:

SECTION CORNERS LOCATED

PROPOSED WELL HEAD.

90° SYMBOL

LEGEND:

SECTION CORNERS LOCATED

PROPOSED WELL HEAD.

90° SYMBOL

LEGEND:

SECTION CORNERS LOCATED

PROPOSED WELL HEAD.

90° SYMBOL

LEGEND:

SECTION CORNERS LOCATED

PROPOSED WELL HEAD.

90° SYMBOL

LEGEND:

SECTION CORNERS LOCATED

PROPOSED WELL HEAD.

90° SYMBOL

LEGEND:

SECTION CORNERS LOCATED

PROPOSED WELL HEAD.

90° SYMBOL

LEGEND:

SECTION CORNERS LOCATED

PROPOSED WELL HEAD.

90° SYMBOL

LEGEND:

SECTION CORNERS LOCATED

PROPOSED WELL HEAD.

90° SYMBOL

LEGEND:

SECTION CORNERS LOCATED

PROPOSED WELL HEAD.

90° SYMBOL

LEGEND:

SECTION CORNERS LOCATED

PROPOSED WELL HEAD.

90° SYMBOL

LEGEND:

SECTION CORNERS LOCATED

PROPOSED WELL HEAD.

90° SYMBOL

LEGEND:

SECTION CORNERS LOCATED

PROPOSED WELL HEAD.

90° SYMBOL

LEGEND:

SECTION CORNERS LOCATED

PROPOSED WELL HEAD.

90° SYMBOL

LEGEND:

SECTION CORNERS LOCATED

PROPOSED WELL HEAD.

90° SYMBOL

LEGEND:

SECTION CORNERS LOCATED

PROPOSED WELL HEAD.

90° SYMBOL

LEGEND:

SECTION CORNERS LOCATED

PROPOSED WELL HEAD.

90° SYMBOL

LEGEND:

2012 Priv. Alum. Copp.
0.5' High
Lat: 39.651028°
Long: 104.491056°

ConocoPhillips Company

Well location, **TEBO #1-1H**, located as shown in **LOT 1** of Section 1, T5S, R64W, 6th P.M., Arapahoe County, Colorado.

ConocoPhillips Company

BASIS OF ELEVATION

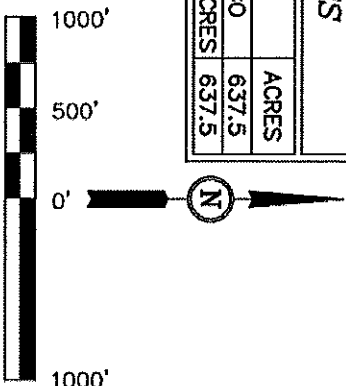
BENCHMARK 374 LOCATED ON THE SECTION LINE BETWEEN SECTIONS 12 & 13, T5S, R64W, 6th. P.M., TAKEN FROM 1988 PUBLISHED DATUM BY THE UNITED STATES DEPARTMENT OF THE INTERIOR. GEOLOGICAL SURVEY AS BEING 6054.61 FEET.

BASIS OF BEARINGS

BASIS OF BEARINGS IS A G.P.S. OBSERVATION

ACREAGES		
LEASE	OWNER	ACRES
A	STEPHEN TEBBO	637.5
	TOTAL GROSS ACRES	637.5

2012 UELS Alum. Corp.
0.5' High
Lat: 39.643786°
Long: 104.491231°



CERTIFICATE

THIS IS TO CERTIFY THAT THE ABOVE PLATS WERE PREPARED FROM FIELD NOTES OF ACTUAL SURVEYS MADE BY ME OR UNDER MY SUPERVISION AND THAT THE SAME ARE TRUE AND CORRECT TO THE BEST OF MY KNOWLEDGE AND BELIEF.

REGISTERED LAND SURVEYOR
REGISTRATION NO. 1422
STATE OF COLORADO
CAL 03745

R	64	R	63
W		W	

UNTAH ENGINEERING & LAND SURVEYING
85 SOUTH 200 EAST - VERNAL, UTAH 84078

(435) 789-1017

E	DATE SURVEYED:	DATE DRAWN:
1" = 1000'	06-12-12	06-25-12

□ = 90° SYMBOL
 ● = PROPOSED WELL HEAD.
 ▲ = SECTION CORNERS LOCATED
 ▼ = SECTION CORNERS
 RE-ESTABLISHED. (Not Set
 on Ground.)

NAD 83 (TARGET BOTTLE)		NAD 83 (SURFACE LOCATION)	
LATITUDE = 39.58 58.28' (39.949503)	LATITUDE = 39.58 57.24' (39.946233)		
LONGITUDE = 104.50 29.57" (104.508214)	LONGITUDE = 104.29 31.15" (104.491986)		
NAD 27 (TARGET BOTTLE)		NAD 27 (SURFACE LOCATION)	
LATITUDE = 39.58 58.28" (39.949517)	LATITUDE = 39.58 57.25" (39.946247)		
LONGITUDE = 104.50 27.70" (104.507894)	LONGITUDE = 104.29 29.28" (104.491467)		

PDOP = 1.3

J.H. C.M. J.M.H.	G.L.O. PLAT
WEATHER WARM	FILE ConocoPhillips Company



ConocoPhillips Company

ADDENDUM TO LEGAL PLAT FOR

TEBO #1-1H

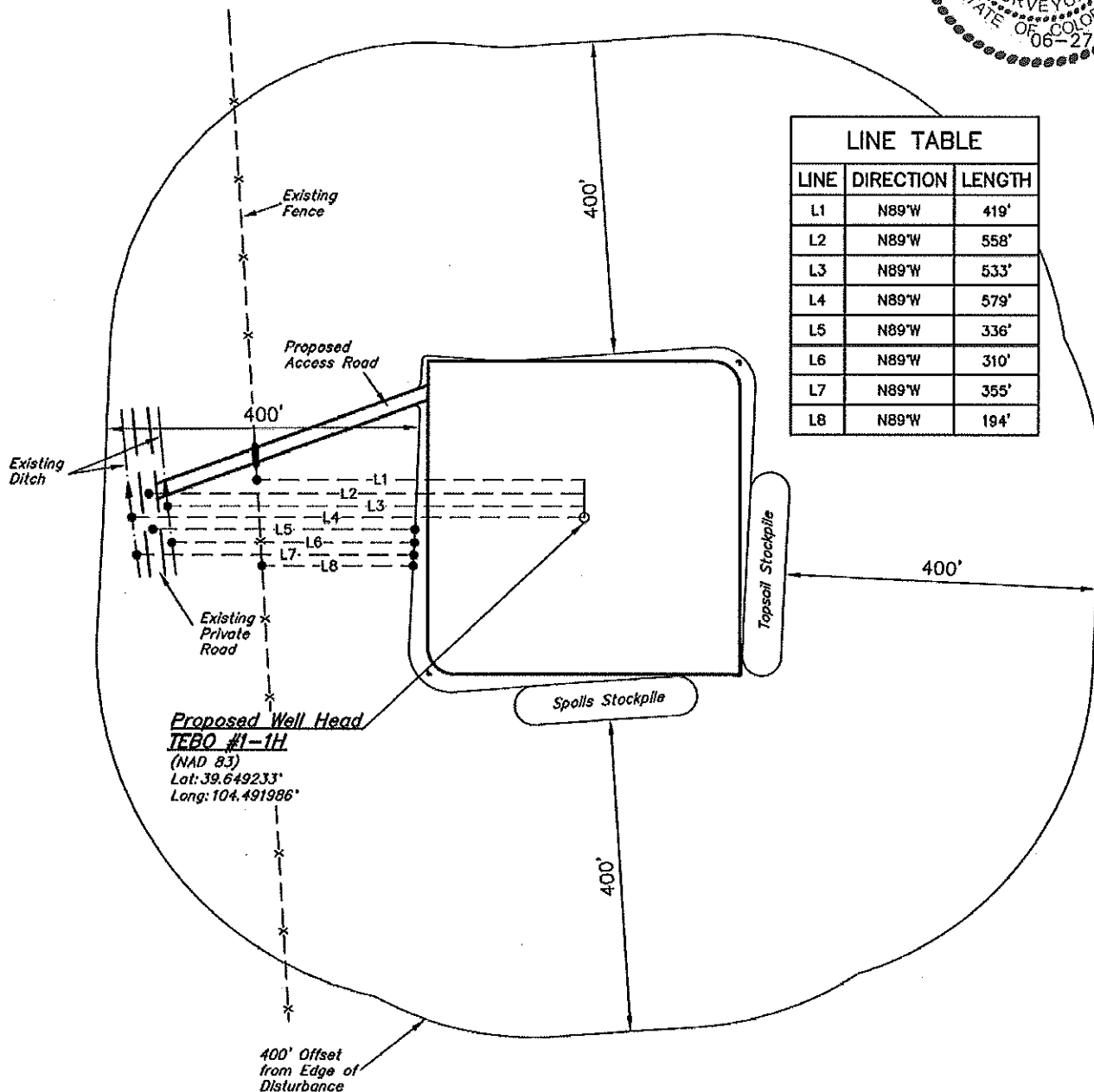
SECTION 1, T5S, R64W, 6th P.M.

660' FNL 250' FEL

SCALE: 1" = 200'

DATE: 06-25-12

DRAWN BY: J.M.H.



UINTAH ENGINEERING & LAND SURVEYING

85 So. 200 East • Vernal, Utah 84078 • (435) 789-1017