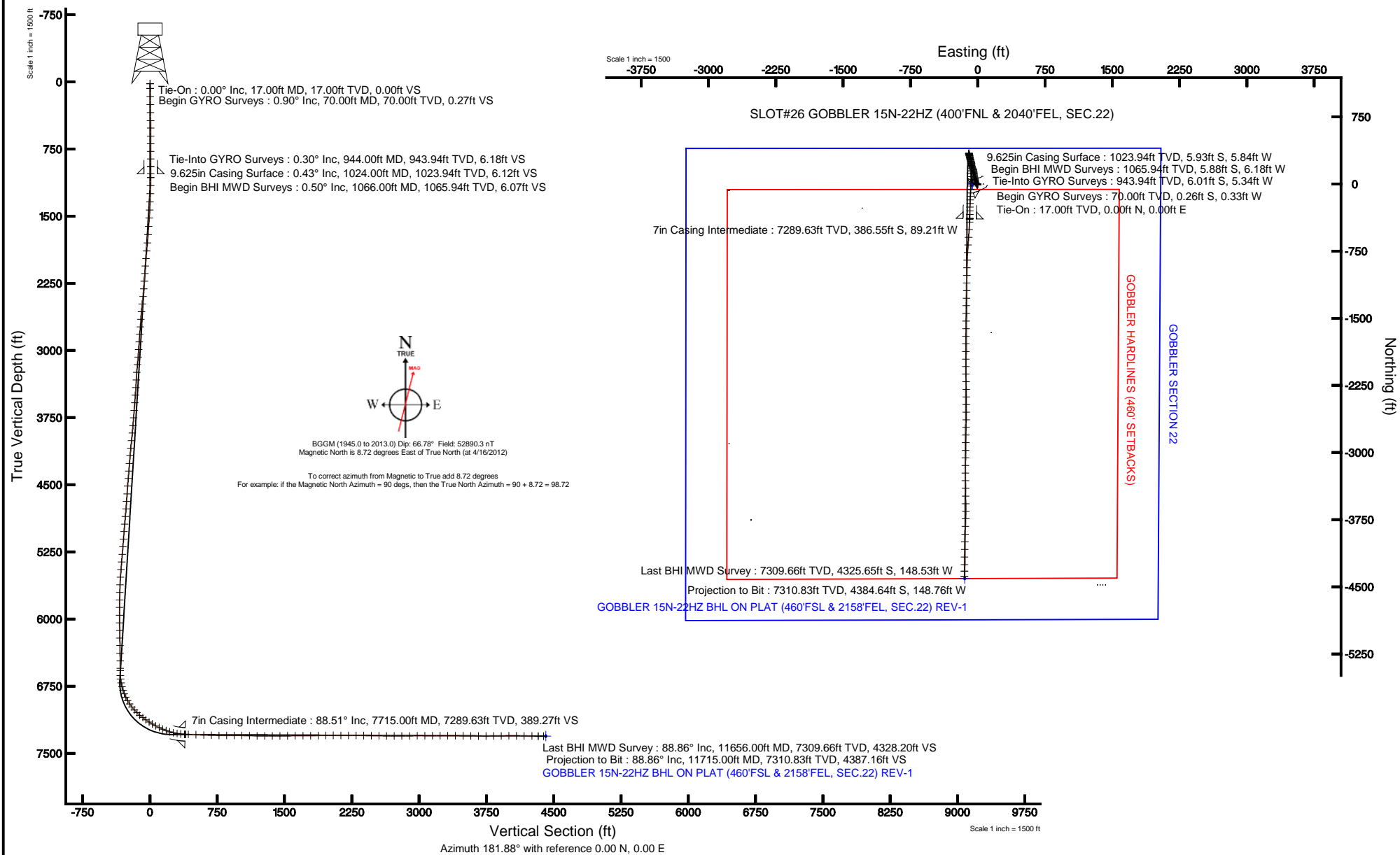


Location:	COLORADO	Slot:	SLOT#26 GOBBLER 15N-22HZ (400'FNL & 2040'FEL, SEC.22)
Field:	WELD COUNTY (KERR MCGEE)	Well:	GOBBLER 15N-22HZ
Facility:	SEC.22-T2N-R66W	Wellbore:	GOBBLER 15N-22HZ PWB

Plot reference wellpath is GOBBLER 15N-22HZ (REV-D 0) PWP	
True vertical depths are referenced to XTREME 6 (RKB)	Grid System: NAD83 / Lambert Colorado SP, Northern Zone (501), US feet
Measured depths are referenced to XTREME 6 (RKB)	North Reference: True north
XTREME 6 (RKB) to Mean Sea Level: 5070 feet	Scale: True distance
Mean Sea Level to Mud line (At Slot: SLOT#26 GOBBLER 15N-22HZ (400'FNL & 2040'FEL, SEC.22)): 0 feet	Depths are in feet
Coordinates are in feet referenced to Slot	Created by: wilisief02 on 4/30/2012





Actual Wellpath Report

GOBBLER 15N-22HZ AWP

Page 1 of 7



REFERENCE WELLPATH IDENTIFICATION

Operator	KERR-MCGEE OIL & GAS ONSHORE LP	Slot	SLOT#26 GOBBLER 15N-22HZ (400'FNL & 2040'FEL, SEC.22)
Area	COLORADO	Well	GOBBLER 15N-22HZ
Field	WELD COUNTY (KERR MCGEE)	Wellbore	GOBBLER 15N-22HZ AWB
Facility	SEC.22-T2N-R66W		

REPORT SETUP INFORMATION

Projection System	NAD83 / Lambert Colorado SP, Northern Zone (501), US feet	Software System	WellArchitect® 3.0.2
North Reference	True	User	Wilsjef02
Scale	0.999959	Report Generated	4/30/2012 at 13:03:15
Convergence at slot	0.48° East	Database/Source file	WellArchitectDB/GOBBLER_15N-22HZ_AWB.xml

WELLPATH LOCATION

	Local coordinates		Grid coordinates		Geographic coordinates	
	North[ft]	East[ft]	Easting[US ft]	Northing[US ft]	Latitude	Longitude
Slot Location	71.50	2783.20	3206583.37	1290993.04	40°07'47.305"N	104°45'40.291"W
Facility Reference Pt			3203800.98	1290898.68	40°07'46.600"N	104°46'16.122"W
Field Reference Pt			3197771.84	1268891.29	40°04'09.600"N	104°47'36.000"W

WELLPATH DATUM

Calculation method	Minimum curvature	XTREME 6 (RKB) to Facility Vertical Datum	5070.00ft
Horizontal Reference Pt	Slot	XTREME 6 (RKB) to Mean Sea Level	5070.00ft
Vertical Reference Pt	XTREME 6 (RKB)	XTREME 6 (RKB) to Mud Line at Slot (SLOT#26 GOBBLER 15N-22HZ (400'FNL & 2040'FEL, SEC.22))	5070.00ft
MD Reference Pt	XTREME 6 (RKB)	Section Origin	N 0.00, E 0.00 ft
Field Vertical Reference	Mean Sea Level	Section Azimuth	181.88°



Actual Wellpath Report

GOBBLER 15N-22HZ AWP

Page 2 of 7



REFERENCE WELLPATH IDENTIFICATION			
Operator	KERR-MCGEE OIL & GAS ONSHORE LP	Slot	SLOT#26 GOBBLER 15N-22HZ (400'FNL & 2040'FEL, SEC.22)
Area	COLORADO	Well	GOBBLER 15N-22HZ
Field	WELD COUNTY (KERR MCGEE)	Wellbore	GOBBLER 15N-22HZ AWB
Facility	SEC.22-T2N-R66W		

WELLPATH DATA (155 stations) † = interpolated/extrapolated station										
MD [ft]	Inclination [°]	Azimuth [°]	TVD [ft]	Vert Sect [ft]	North [ft]	East [ft]	Latitude	Longitude	DLS [°/100ft]	Comments
0.00†	0.000	231.430	0.00	0.00	0.00	0.00	40°07'47.305"N	104°45'40.291"W	0.00	
17.00	0.000	231.430	17.00	0.00	0.00	0.00	40°07'47.305"N	104°45'40.291"W	0.00	Tie-On
70.00	0.900	231.430	70.00	0.27	-0.26	-0.33	40°07'47.302"N	104°45'40.295"W	1.70	Begin GYRO Surveys
160.00	1.000	217.230	159.99	1.37	-1.33	-1.35	40°07'47.292"N	104°45'40.308"W	0.28	
250.00	1.000	208.030	249.97	2.71	-2.64	-2.20	40°07'47.279"N	104°45'40.319"W	0.18	
342.00	0.900	208.930	341.96	4.08	-3.99	-2.92	40°07'47.266"N	104°45'40.329"W	0.11	
430.00	0.700	202.330	429.95	5.20	-5.09	-3.46	40°07'47.255"N	104°45'40.336"W	0.25	
514.00	0.300	224.030	513.95	5.84	-5.72	-3.81	40°07'47.248"N	104°45'40.340"W	0.52	
604.00	0.200	202.730	603.95	6.16	-6.03	-4.04	40°07'47.245"N	104°45'40.343"W	0.15	
689.00	0.100	291.930	688.95	6.28	-6.14	-4.16	40°07'47.244"N	104°45'40.345"W	0.26	
774.00	0.300	274.830	773.95	6.24	-6.10	-4.45	40°07'47.245"N	104°45'40.348"W	0.24	
859.00	0.300	276.030	858.94	6.21	-6.05	-4.89	40°07'47.245"N	104°45'40.354"W	0.01	
944.00	0.300	276.330	943.94	6.18	-6.01	-5.34	40°07'47.246"N	104°45'40.360"W	0.00	Tie-Into GYRO Surveys
1066.00	0.500	280.460	1065.94	6.07	-5.88	-6.18	40°07'47.247"N	104°45'40.371"W	0.17	Begin BHI MWD Surveys
1157.00	1.490	311.650	1156.93	5.26	-5.02	-7.45	40°07'47.255"N	104°45'40.387"W	1.20	
1247.00	2.310	329.130	1246.88	2.98	-2.68	-9.26	40°07'47.278"N	104°45'40.410"W	1.11	
1339.00	3.210	319.610	1338.77	-0.48	0.87	-11.88	40°07'47.314"N	104°45'40.444"W	1.09	
1429.00	3.860	318.500	1428.60	-4.55	5.06	-15.52	40°07'47.355"N	104°45'40.491"W	0.73	
1521.00	4.590	325.900	1520.35	-9.78	10.43	-19.63	40°07'47.408"N	104°45'40.544"W	0.99	
1614.00	4.360	333.470	1613.06	-15.90	16.67	-23.30	40°07'47.470"N	104°45'40.591"W	0.68	
1707.00	4.490	347.400	1705.79	-22.53	23.39	-25.67	40°07'47.536"N	104°45'40.622"W	1.16	
1798.00	4.870	349.520	1796.49	-29.75	30.66	-27.15	40°07'47.608"N	104°45'40.641"W	0.46	
1890.00	5.210	350.680	1888.13	-37.67	38.62	-28.54	40°07'47.687"N	104°45'40.658"W	0.39	
1975.00	5.730	351.140	1972.74	-45.62	46.62	-29.82	40°07'47.766"N	104°45'40.675"W	0.61	
2058.00	4.230	347.780	2055.43	-52.66	53.71	-31.10	40°07'47.836"N	104°45'40.691"W	1.84	
2143.00	3.980	345.900	2140.21	-58.54	59.64	-32.49	40°07'47.894"N	104°45'40.709"W	0.33	
2228.00	4.720	343.730	2224.96	-64.70	65.85	-34.18	40°07'47.956"N	104°45'40.731"W	0.89	
2314.00	4.940	343.240	2310.66	-71.57	72.80	-36.24	40°07'48.024"N	104°45'40.758"W	0.26	
2399.00	5.670	351.870	2395.30	-79.17	80.46	-37.89	40°07'48.100"N	104°45'40.779"W	1.27	
2484.00	5.490	353.790	2479.89	-87.33	88.66	-38.93	40°07'48.181"N	104°45'40.792"W	0.31	
2570.00	5.650	354.750	2565.49	-95.60	96.96	-39.76	40°07'48.263"N	104°45'40.803"W	0.22	
2655.00	4.440	347.020	2650.16	-102.94	104.33	-40.88	40°07'48.336"N	104°45'40.817"W	1.63	
2740.00	4.330	350.780	2734.91	-109.26	110.71	-42.13	40°07'48.399"N	104°45'40.833"W	0.36	
2825.00	4.110	354.340	2819.68	-115.43	116.91	-42.95	40°07'48.460"N	104°45'40.844"W	0.40	
2910.00	4.110	350.840	2904.46	-121.44	122.94	-43.73	40°07'48.520"N	104°45'40.854"W	0.30	
2995.00	4.300	351.800	2989.23	-127.57	129.11	-44.67	40°07'48.581"N	104°45'40.866"W	0.24	
3080.00	4.710	350.150	3073.97	-134.12	135.70	-45.72	40°07'48.646"N	104°45'40.880"W	0.51	
3165.00	5.150	352.070	3158.65	-141.30	142.92	-46.85	40°07'48.717"N	104°45'40.894"W	0.55	
3250.00	4.150	348.850	3243.37	-148.06	149.71	-47.97	40°07'48.784"N	104°45'40.909"W	1.22	
3335.00	3.950	349.150	3328.16	-153.91	155.60	-49.11	40°07'48.843"N	104°45'40.923"W	0.24	
3421.00	3.520	348.880	3413.98	-159.37	161.10	-50.18	40°07'48.897"N	104°45'40.937"W	0.50	
3506.00	4.290	339.090	3498.78	-164.84	166.63	-51.82	40°07'48.952"N	104°45'40.958"W	1.20	
3591.00	4.680	335.760	3583.52	-170.89	172.77	-54.38	40°07'49.012"N	104°45'40.991"W	0.55	
3676.00	5.050	335.250	3668.21	-177.34	179.33	-57.37	40°07'49.077"N	104°45'41.030"W	0.44	
3761.00	4.990	335.550	3752.89	-184.00	186.09	-60.46	40°07'49.144"N	104°45'41.069"W	0.08	



Actual Wellpath Report

GOBBLER 15N-22HZ AWP

Page 3 of 7



REFERENCE WELLPATH IDENTIFICATION			
Operator	KERR-MCGEE OIL & GAS ONSHORE LP	Slot	SLOT#26 GOBBLER 15N-22HZ (400'FNL & 2040'FEL, SEC.22)
Area	COLORADO	Well	GOBBLER 15N-22HZ
Field	WELD COUNTY (KERR MCGEE)	Wellbore	GOBBLER 15N-22HZ AWB
Facility	SEC.22-T2N-R66W		

WELLPATH DATA (155 stations)

MD [ft]	Inclination [°]	Azimuth [°]	TVD [ft]	Vert Sect [ft]	North [ft]	East [ft]	Latitude	Longitude	DLS [°/100ft]	Comments
3847.00	5.630	337.370	3838.52	-191.19	193.39	-63.64	40°07'49.216"N	104°45'41.110"W	0.77	
3932.00	5.690	341.180	3923.10	-198.93	201.22	-66.60	40°07'49.294"N	104°45'41.148"W	0.45	
4017.00	5.690	351.630	4007.69	-207.02	209.38	-68.57	40°07'49.374"N	104°45'41.174"W	1.22	
4101.00	5.410	357.460	4091.29	-215.06	217.46	-69.35	40°07'49.454"N	104°45'41.184"W	0.75	
4187.00	4.980	3.440	4176.94	-222.84	225.23	-69.31	40°07'49.531"N	104°45'41.183"W	0.80	
4272.00	4.690	351.970	4261.64	-229.95	232.36	-69.57	40°07'49.601"N	104°45'41.187"W	1.19	
4357.00	4.950	350.160	4346.34	-236.96	239.41	-70.69	40°07'49.671"N	104°45'41.201"W	0.35	
4442.00	4.750	339.460	4431.04	-243.80	246.32	-72.55	40°07'49.739"N	104°45'41.225"W	1.09	
4527.00	4.690	336.220	4515.75	-250.19	252.80	-75.18	40°07'49.803"N	104°45'41.259"W	0.32	
4613.00	4.410	338.770	4601.48	-256.40	259.09	-77.80	40°07'49.865"N	104°45'41.293"W	0.40	
4698.00	4.430	339.070	4686.23	-262.43	265.21	-80.15	40°07'49.926"N	104°45'41.323"W	0.04	
4783.00	4.900	343.700	4770.94	-268.91	271.76	-82.35	40°07'49.991"N	104°45'41.351"W	0.71	
4867.00	4.910	346.510	4854.64	-275.78	278.70	-84.19	40°07'50.059"N	104°45'41.375"W	0.29	
4952.00	5.100	347.460	4939.31	-282.95	285.92	-85.86	40°07'50.131"N	104°45'41.396"W	0.24	
5037.00	4.700	349.410	5024.00	-290.01	293.03	-87.32	40°07'50.201"N	104°45'41.415"W	0.51	
5122.00	4.540	351.830	5108.73	-296.72	299.79	-88.44	40°07'50.268"N	104°45'41.430"W	0.30	
5208.00	4.570	352.580	5194.45	-303.45	306.55	-89.36	40°07'50.334"N	104°45'41.441"W	0.08	
5293.00	4.760	351.930	5279.17	-310.27	313.40	-90.30	40°07'50.402"N	104°45'41.453"W	0.23	
5378.00	4.940	345.990	5363.87	-317.26	320.44	-91.68	40°07'50.472"N	104°45'41.471"W	0.63	
5463.00	5.130	345.270	5448.54	-324.42	327.67	-93.53	40°07'50.543"N	104°45'41.495"W	0.24	
5549.00	3.540	341.560	5534.29	-330.60	333.91	-95.35	40°07'50.605"N	104°45'41.519"W	1.88	
5634.00	2.380	347.440	5619.18	-334.77	338.12	-96.56	40°07'50.646"N	104°45'41.534"W	1.41	
5719.00	1.670	2.180	5704.12	-337.72	341.08	-96.90	40°07'50.676"N	104°45'41.538"W	1.03	
5804.00	0.890	356.940	5789.10	-339.61	342.98	-96.89	40°07'50.694"N	104°45'41.538"W	0.93	
5887.00	0.810	3.870	5872.09	-340.84	344.21	-96.88	40°07'50.706"N	104°45'41.538"W	0.16	
5973.00	0.370	184.440	5958.09	-341.17	344.54	-96.86	40°07'50.710"N	104°45'41.538"W	1.37	
6058.00	0.770	188.030	6043.09	-340.33	343.70	-96.96	40°07'50.701"N	104°45'41.539"W	0.47	
6143.00	0.930	187.130	6128.08	-339.07	342.45	-97.13	40°07'50.689"N	104°45'41.541"W	0.19	
6228.00	0.960	190.060	6213.07	-337.68	341.06	-97.34	40°07'50.675"N	104°45'41.544"W	0.07	
6313.00	1.010	200.930	6298.05	-336.27	339.66	-97.73	40°07'50.662"N	104°45'41.549"W	0.23	
6399.00	0.900	197.170	6384.04	-334.90	338.31	-98.20	40°07'50.648"N	104°45'41.555"W	0.15	
6484.00	0.810	180.640	6469.03	-333.66	337.07	-98.40	40°07'50.636"N	104°45'41.558"W	0.31	
6567.00	0.470	187.210	6552.03	-332.73	336.15	-98.45	40°07'50.627"N	104°45'41.559"W	0.42	
6592.00	0.530	181.770	6577.03	-332.51	335.93	-98.47	40°07'50.625"N	104°45'41.559"W	0.31	
6646.00	0.740	193.760	6631.02	-331.92	335.34	-98.56	40°07'50.619"N	104°45'41.560"W	0.46	
6688.00	5.500	170.900	6672.95	-329.68	333.09	-98.31	40°07'50.597"N	104°45'41.557"W	11.49	
6731.00	11.190	166.760	6715.48	-323.62	326.99	-97.02	40°07'50.536"N	104°45'41.540"W	13.30	
6774.00	16.930	162.440	6757.17	-313.68	316.95	-94.18	40°07'50.437"N	104°45'41.503"W	13.56	
6816.00	18.240	160.240	6797.21	-301.81	304.93	-90.11	40°07'50.318"N	104°45'41.451"W	3.50	
6859.00	21.700	162.360	6837.62	-288.05	291.02	-85.42	40°07'50.181"N	104°45'41.391"W	8.22	
6901.00	27.060	170.660	6875.87	-271.35	274.17	-81.52	40°07'50.014"N	104°45'41.340"W	15.12	
6944.00	31.100	172.460	6913.44	-250.79	253.50	-78.47	40°07'49.810"N	104°45'41.301"W	9.61	
6987.00	34.400	172.240	6949.60	-227.85	230.45	-75.37	40°07'49.582"N	104°45'41.261"W	7.68	
7030.00	37.910	173.830	6984.32	-202.79	205.27	-72.31	40°07'49.334"N	104°45'41.222"W	8.45	
7072.00	41.850	176.840	7016.54	-176.04	178.44	-70.15	40°07'49.068"N	104°45'41.194"W	10.44	



Actual Wellpath Report

GOBBLER 15N-22HZ AWP

Page 4 of 7



REFERENCE WELLPATH IDENTIFICATION			
Operator	KERR-MCGEE OIL & GAS ONSHORE LP	Slot	SLOT#26 GOBBLER 15N-22HZ (400'FNL & 2040'FEL, SEC.22)
Area	COLORADO	Well	GOBBLER 15N-22HZ
Field	WELD COUNTY (KERR MCGEE)	Wellbore	GOBBLER 15N-22HZ AWB
Facility	SEC.22-T2N-R66W		

WELLPATH DATA (155 stations) † = interpolated/extrapolated station										
MD [ft]	Inclination [°]	Azimuth [°]	TVD [ft]	Vert Sect [ft]	North [ft]	East [ft]	Latitude	Longitude	DLS [°/100ft]	Comments
7115.00	45.190	181.550	7047.73	-146.49	148.86	-69.77	40°07'48.776"N	104°45'41.189"W	10.82	
7158.00	49.530	183.800	7076.85	-114.87	117.27	-71.27	40°07'48.464"N	104°45'41.209"W	10.80	
7200.00	53.070	182.530	7103.11	-82.10	84.55	-73.07	40°07'48.141"N	104°45'41.232"W	8.75	
7243.00	55.140	182.410	7128.32	-47.27	49.75	-74.57	40°07'47.797"N	104°45'41.251"W	4.82	
7286.00	57.230	182.310	7152.25	-11.55	14.06	-76.04	40°07'47.444"N	104°45'41.270"W	4.86	
7328.00	60.030	182.110	7174.11	24.30	-21.77	-77.42	40°07'47.090"N	104°45'41.288"W	6.68	
7371.00	62.220	182.300	7194.87	61.96	-59.40	-78.87	40°07'46.718"N	104°45'41.306"W	5.11	
7414.00	64.650	182.480	7214.10	100.41	-97.82	-80.48	40°07'46.338"N	104°45'41.327"W	5.66	
7456.00	65.770	182.980	7231.71	138.54	-135.91	-82.29	40°07'45.962"N	104°45'41.350"W	2.88	
7499.00	68.980	182.720	7248.25	178.22	-175.54	-84.27	40°07'45.570"N	104°45'41.376"W	7.49	
7542.00	74.030	181.480	7261.89	218.98	-216.28	-85.75	40°07'45.168"N	104°45'41.395"W	12.06	
7584.00	76.520	181.290	7272.56	259.60	-256.89	-86.73	40°07'44.766"N	104°45'41.408"W	5.94	
7627.00	81.560	180.820	7280.73	301.79	-299.08	-87.51	40°07'44.349"N	104°45'41.418"W	11.77	
7668.00	82.870	181.030	7286.29	342.41	-339.70	-88.17	40°07'43.948"N	104°45'41.426"W	3.24	
7710.00	88.370	181.490	7289.49	384.27	-381.55	-89.09	40°07'43.534"N	104°45'41.438"W	13.14	
7715.00†	88.512	181.382	7289.63	389.27	-386.55	-89.21	40°07'43.485"N	104°45'41.440"W	3.57	7" Casing Point
7723.00	88.740	181.210	7289.82	397.26	-394.54	-89.39	40°07'43.406"N	104°45'41.442"W	3.57	
7753.00	87.720	182.760	7290.75	427.25	-424.51	-90.43	40°07'43.110"N	104°45'41.455"W	6.18	
7838.00	87.420	184.130	7294.35	512.14	-509.28	-95.54	40°07'42.272"N	104°45'41.521"W	1.65	
7924.00	88.060	183.960	7297.74	598.01	-594.99	-101.60	40°07'41.425"N	104°45'41.599"W	0.77	
8009.00	88.710	184.000	7300.14	682.92	-679.75	-107.49	40°07'40.588"N	104°45'41.675"W	0.77	
8094.00	88.430	183.690	7302.26	767.84	-764.54	-113.19	40°07'39.750"N	104°45'41.748"W	0.49	
8179.00	89.940	181.740	7303.47	852.82	-849.43	-117.22	40°07'38.911"N	104°45'41.800"W	2.90	
8264.00	90.340	181.470	7303.26	937.82	-934.39	-119.60	40°07'38.071"N	104°45'41.831"W	0.57	
8349.00	89.050	180.970	7303.71	1022.81	-1019.37	-121.41	40°07'37.231"N	104°45'41.854"W	1.63	
8434.00	88.770	180.530	7305.33	1107.77	-1104.35	-122.52	40°07'36.392"N	104°45'41.868"W	0.61	
8519.00	88.920	180.310	7307.05	1192.73	-1189.33	-123.14	40°07'35.552"N	104°45'41.876"W	0.31	
8604.00	90.120	182.460	7307.76	1277.72	-1274.29	-125.20	40°07'34.712"N	104°45'41.903"W	2.90	
8689.00	90.180	180.910	7307.53	1362.71	-1359.25	-127.70	40°07'33.873"N	104°45'41.935"W	1.82	
8775.00	90.220	180.600	7307.23	1448.70	-1445.25	-128.83	40°07'33.023"N	104°45'41.949"W	0.36	
8860.00	90.400	180.720	7306.77	1533.68	-1530.24	-129.81	40°07'32.183"N	104°45'41.962"W	0.25	
8945.00	90.500	180.850	7306.11	1618.66	-1615.23	-130.97	40°07'31.343"N	104°45'41.977"W	0.19	
9030.00	90.460	180.360	7305.39	1703.63	-1700.22	-131.87	40°07'30.503"N	104°45'41.989"W	0.58	
9115.00	90.430	180.410	7304.73	1788.60	-1785.22	-132.44	40°07'29.663"N	104°45'41.996"W	0.07	
9200.00	90.740	180.210	7303.87	1873.57	-1870.21	-132.90	40°07'28.823"N	104°45'42.002"W	0.43	
9286.00	90.770	180.090	7302.73	1959.52	-1956.20	-133.13	40°07'27.974"N	104°45'42.005"W	0.14	
9368.00	90.490	179.770	7301.83	2041.47	-2038.20	-133.03	40°07'27.163"N	104°45'42.003"W	0.52	
9454.00	89.200	179.000	7302.06	2127.38	-2124.19	-132.10	40°07'26.314"N	104°45'41.992"W	1.75	
9539.00	89.320	178.780	7303.16	2212.26	-2209.17	-130.46	40°07'25.474"N	104°45'41.970"W	0.29	
9624.00	89.880	178.600	7303.76	2297.12	-2294.14	-128.51	40°07'24.634"N	104°45'41.945"W	0.69	
9709.00	89.720	180.010	7304.05	2382.04	-2379.13	-127.48	40°07'23.794"N	104°45'41.932"W	1.67	
9793.00	89.150	179.610	7304.88	2465.98	-2463.13	-127.20	40°07'22.964"N	104°45'41.928"W	0.83	
9879.00	89.350	180.220	7306.01	2551.92	-2549.12	-127.08	40°07'22.114"N	104°45'41.927"W	0.75	
9964.00	89.290	181.450	7307.02	2636.90	-2634.10	-128.32	40°07'21.275"N	104°45'41.943"W	1.45	
10049.00	89.290	181.070	7308.07	2721.88	-2719.08	-130.18	40°07'20.435"N	104°45'41.967"W	0.45	



Actual Wellpath Report

GOBBLER 15N-22HZ AWP

Page 5 of 7



REFERENCE WELLPATH IDENTIFICATION			
Operator	KERR-MCGEE OIL & GAS ONSHORE LP	Slot	SLOT#26 GOBBLER 15N-22HZ (400'FNL & 2040'FEL, SEC.22)
Area	COLORADO	Well	GOBBLER 15N-22HZ
Field	WELD COUNTY (KERR MCGEE)	Wellbore	GOBBLER 15N-22HZ AWB
Facility	SEC.22-T2N-R66W		

WELLPATH DATA (155 stations)

MD [ft]	Inclination [°]	Azimuth [°]	TVD [ft]	Vert Sect [ft]	North [ft]	East [ft]	Latitude	Longitude	DLS [°/100ft]	Comments
10134.00	90.490	181.410	7308.23	2806.88	-2804.05	-132.02	40°07'19.595"N	104°45'41.990"W	1.47	
10220.00	90.920	181.190	7307.17	2892.87	-2890.02	-133.98	40°07'18.745"N	104°45'42.016"W	0.56	
10305.00	90.860	181.170	7305.85	2977.85	-2975.00	-135.73	40°07'17.906"N	104°45'42.038"W	0.07	
10390.00	89.700	180.080	7305.44	3062.82	-3059.99	-136.65	40°07'17.066"N	104°45'42.050"W	1.87	
10476.00	89.970	180.410	7305.69	3148.79	-3145.99	-137.02	40°07'16.216"N	104°45'42.055"W	0.50	
10561.00	90.150	179.800	7305.60	3233.75	-3230.99	-137.18	40°07'15.376"N	104°45'42.057"W	0.75	
10646.00	89.970	179.480	7305.51	3318.68	-3315.98	-136.64	40°07'14.536"N	104°45'42.050"W	0.43	
10731.00	89.720	179.350	7305.74	3403.60	-3400.98	-135.77	40°07'13.696"N	104°45'42.039"W	0.33	
10817.00	89.040	179.360	7306.67	3489.51	-3486.97	-134.81	40°07'12.846"N	104°45'42.026"W	0.79	
10902.00	89.230	179.110	7307.95	3574.41	-3571.95	-133.67	40°07'12.007"N	104°45'42.012"W	0.37	
10987.00	89.570	179.910	7308.84	3659.34	-3656.94	-132.94	40°07'11.167"N	104°45'42.002"W	1.02	
11072.00	89.910	181.690	7309.23	3744.32	-3741.93	-134.13	40°07'10.327"N	104°45'42.018"W	2.13	
11157.00	90.800	182.570	7308.70	3829.31	-3826.87	-137.29	40°07'09.487"N	104°45'42.058"W	1.47	
11243.00	91.040	182.540	7307.32	3915.29	-3912.77	-141.12	40°07'08.639"N	104°45'42.108"W	0.28	
11328.00	90.370	181.200	7306.27	4000.29	-3997.72	-143.90	40°07'07.799"N	104°45'42.143"W	1.76	
11413.00	89.540	180.790	7306.34	4085.27	-4082.70	-145.37	40°07'06.959"N	104°45'42.162"W	1.09	
11498.00	89.300	181.290	7307.20	4170.26	-4167.68	-146.92	40°07'06.119"N	104°45'42.182"W	0.65	
11584.00	89.120	180.370	7308.39	4256.24	-4253.67	-148.16	40°07'05.270"N	104°45'42.198"W	1.09	
11656.00	88.860	180.220	7309.66	4328.20	-4325.65	-148.53	40°07'04.558"N	104°45'42.203"W	0.42	Last BHI MWD Survey
11715.00	88.860	180.220	7310.83	4387.16	-4384.64	-148.76	40°07'03.975"N	104°45'42.206"W	0.00	Projection to Bit

HOLE & CASING SECTIONS - Ref Wellbore: GOBBLER 15N-22HZ AWB Ref Wellpath: GOBBLER 15N-22HZ AWP

String/Diameter	Start MD [ft]	End MD [ft]	Interval [ft]	Start TVD [ft]	End TVD [ft]	Start N/S [ft]	Start E/W [ft]	End N/S [ft]	End E/W [ft]
13.5in Open Hole	17.00	1024.00	1007.00	17.00	1023.94	0.00	0.00	-5.93	-5.84
9.625in Casing Surface	17.00	1024.00	1007.00	17.00	1023.94	0.00	0.00	-5.93	-5.84
8.75in Open Hole	1024.00	7720.00	6696.00	1023.94	7289.75	-5.93	-5.84	-391.54	-89.33
7in Casing Intermediate	17.00	7715.00	7698.00	17.00	7289.63	0.00	0.00	-386.55	-89.21
6.125in Open Hole	7715.00	11715.00	4000.00	7289.63	7310.83	-386.55	-89.21	-4384.64	-148.76



Actual Wellpath Report

GOBBLER 15N-22HZ AWP

Page 6 of 7



REFERENCE WELLPATH IDENTIFICATION			
Operator	KERR-MCGEE OIL & GAS ONSHORE LP	Slot	SLOT#26 GOBBLER 15N-22HZ (400'FNL & 2040'FEL, SEC.22)
Area	COLORADO	Well	GOBBLER 15N-22HZ
Field	WELD COUNTY (KERR MCGEE)	Wellbore	GOBBLER 15N-22HZ AWB
Facility	SEC.22-T2N-R66W		

TARGETS									
Name	MD [ft]	TVD [ft]	North [ft]	East [ft]	Grid East [US ft]	Grid North [US ft]	Latitude	Longitude	Shape
GOBBLER SECTION 22		0.00	0.02	-60.14	3206523.24	1290992.56	40°07'47.305"N	104°45'41.065"W	polygon
GOBBLER 15N-22HZ BHL ON PLAT (460'FSL & 2158'FEL, SEC.22) REV-1		7310.00	-4409.79	-144.89	3206475.23	1286582.39	40°07'03.727"N	104°45'42.156"W	point
GOBBLER HARDLINES (460' SETBACKS)		7400.00	0.02	-60.14	3206523.24	1290992.56	40°07'47.305"N	104°45'41.065"W	polygon

WELLPATH COMPOSITION - Ref Wellbore: GOBBLER 15N-22HZ AWB					Ref Wellpath: GOBBLER 15N-22HZ AWP	
Start MD [ft]	End MD [ft]	Positional Uncertainty Model	Log Name/Comment		Wellbore	
17.00	944.00	Generic gyro - continuous (Standard)	GYRODATA SURVEYS 13 1/2" HOLE <70-944>		GOBBLER 15N-22HZ AWB	
944.00	7723.00	NaviTrak (Standard)	BHI MWD SURVEYS 8 3/4" HOLE <1066-7723>		GOBBLER 15N-22HZ AWB	
7723.00	11656.00	OnTrak (Standard)	BHI MWD SURVEYS 6 1/8" HOLE <7753-11656>		GOBBLER 15N-22HZ AWB	
11656.00	11715.00	Blind Drilling (std)	Projection to bit		GOBBLER 15N-22HZ AWB	



Actual Wellpath Report

GOBBLER 15N-22HZ AWP

Page 7 of 7



REFERENCE WELLPATH IDENTIFICATION			
Operator	KERR-MCGEE OIL & GAS ONSHORE LP	Slot	SLOT#26 GOBBLER 15N-22HZ (400'FNL & 2040'FEL, SEC.22)
Area	COLORADO	Well	GOBBLER 15N-22HZ
Field	WELD COUNTY (KERR MCGEE)	Wellbore	GOBBLER 15N-22HZ AWB
Facility	SEC.22-T2N-R66W		

WELLPATH COMMENTS				
MD [ft]	Inclination [°]	Azimuth [°]	TVD [ft]	Comment
17.00	0.000	231.430	17.00	Tie-On
70.00	0.900	231.430	70.00	Begin GYRO Surveys
944.00	0.300	276.330	943.94	Tie-Into GYRO Surveys
1066.00	0.500	280.460	1065.94	Begin BHI MWD Surveys
7715.00	88.512	181.382	7289.63	7" Casing Point
11656.00	88.860	180.220	7309.66	Last BHI MWD Survey
11715.00	88.860	180.220	7310.83	Projection to Bit