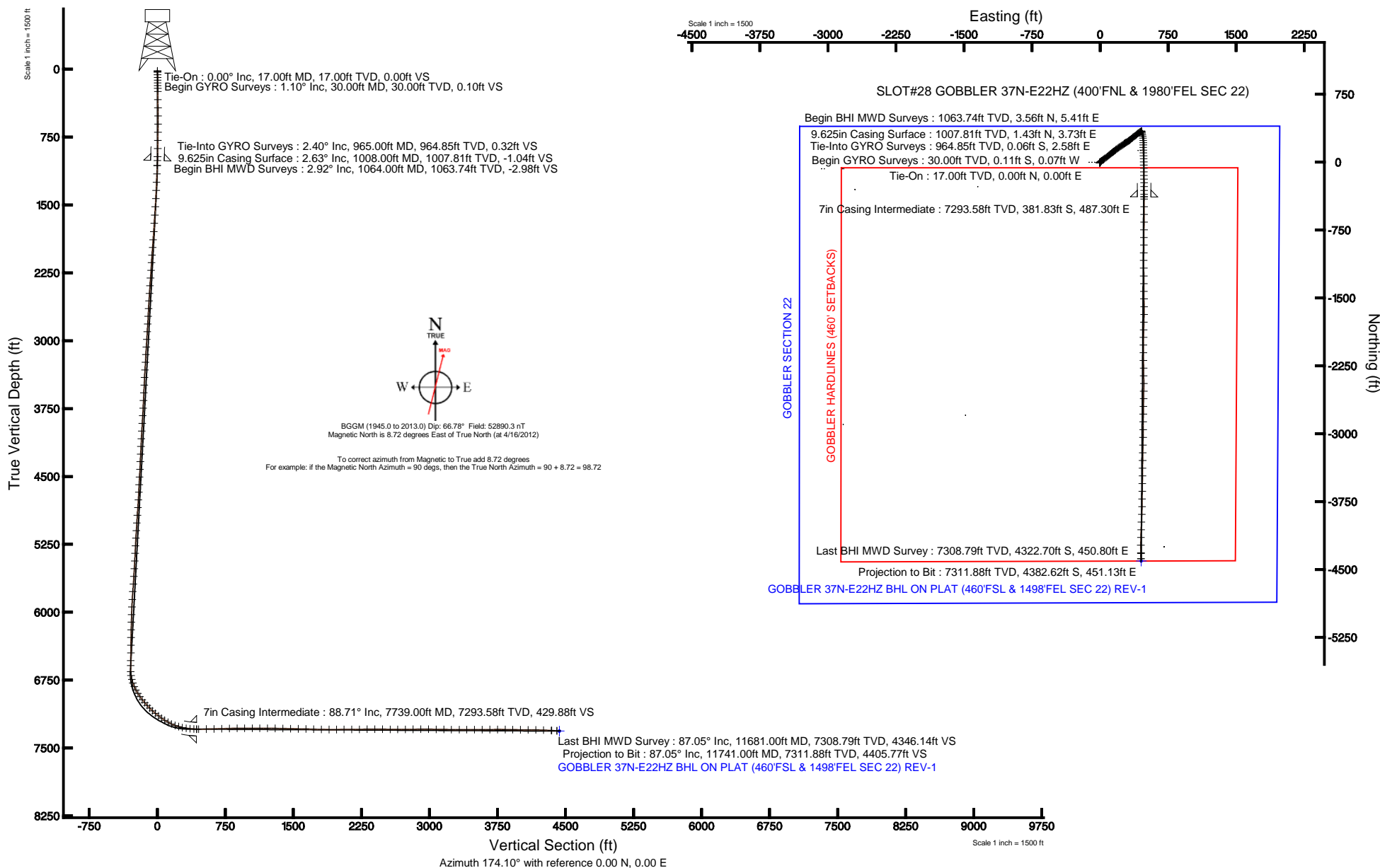


KERR-MCGEE OIL & GAS ONSHORE LP

Location: COLORADO Slot: SLOT#28 GOBBLER 37N-E22HZ (400'FNL & 1980'FEL SEC 22)
 Field: WELD COUNTY (KERR MCGEE) Well: GOBBLER 37N-E22HZ
 Facility: SEC.22-T2N-R66W Wellbore: GOBBLER 37N-E22HZ PWB

Plot reference wellpath is GOBBLER 37N-E22HZ (REV-D.0) PWP	
True vertical depths are referenced to XTREME 6 (RKB)	Grid System: NAD83 / Lambert Colorado SP, Northern Zone (501), US feet
Measured depths are referenced to XTREME 6 (RKB)	North Reference: True north
XTREME 6 (RKB) to Mean Sea Level: 5070 feet	Scale: True distance
Mean Sea Level to Mud line (At Slot: SLOT#28 GOBBLER 37N-E22HZ (400'FNL & 1980'FEL SEC 22)): 0 feet	Depths are in feet
Coordinates are in feet referenced to Slot	Created by: wilsje02 on 5/29/2012





Actual Wellpath Report

GOBBLER 37N-E22HZ AWP

Page 1 of 7



REFERENCE WELLPATH IDENTIFICATION			
Operator	KERR-MCGEE OIL & GAS ONSHORE LP	Slot	SLOT#28 GOBBLER 37N-E22HZ (400'FNL & 1980'FEL SEC 22)
Area	COLORADO	Well	GOBBLER 37N-E22HZ
Field	WELD COUNTY (KERR MCGEE)	Wellbore	GOBBLER 37N-E22HZ AWB
Facility	SEC.22-T2N-R66W		

REPORT SETUP INFORMATION			
Projection System	NAD83 / Lambert Colorado SP, Northern Zone (501), US feet	Software System	WellArchitect® 3.0.2
North Reference	True	User	Wilsjef02
Scale	0.999959	Report Generated	5/29/2012 at 10:05:58
Convergence at slot	0.48° East	Database/Source file	WellArchitectDB/GOBBLER_37N-E22HZ_AWB.xml

WELLPATH LOCATION						
	Local coordinates		Grid coordinates		Geographic coordinates	
	North[ft]	East[ft]	Easting[US ft]	Northing[US ft]	Latitude	Longitude
Slot Location	71.50	2843.01	3206643.18	1290993.54	40°07'47.305"N	104°45'39.521"W
Facility Reference Pt			3203800.98	1290898.68	40°07'46.600"N	104°46'16.122"W
Field Reference Pt			3197771.84	1268891.29	40°04'09.600"N	104°47'36.000"W

WELLPATH DATUM			
Calculation method	Minimum curvature	XTREME 6 (RKB) to Facility Vertical Datum	5070.00ft
Horizontal Reference Pt	Slot	XTREME 6 (RKB) to Mean Sea Level	5070.00ft
Vertical Reference Pt	XTREME 6 (RKB)	XTREME 6 (RKB) to Mud Line at Slot (SLOT#28 GOBBLER 37N-E22HZ (400'FNL & 1980'FEL SEC 22))	5070.00ft
MD Reference Pt	XTREME 6 (RKB)	Section Origin	N 0.00, E 0.00 ft
Field Vertical Reference	Mean Sea Level	Section Azimuth	174.10°



Actual Wellpath Report

GOBBLER 37N-E22HZ AWP

Page 2 of 7



REFERENCE WELLPATH IDENTIFICATION

Operator	KERR-MCGEE OIL & GAS ONSHORE LP	Slot	SLOT#28 GOBBLER 37N-E22HZ (400'FNL & 1980'FEL SEC 22)
Area	COLORADO	Well	GOBBLER 37N-E22HZ
Field	WELD COUNTY (KERR MCGEE)	Wellbore	GOBBLER 37N-E22HZ AWB
Facility	SEC.22-T2N-R66W		

WELLPATH DATA (159 stations) † = interpolated/extrapolated station

MD [ft]	Inclination [°]	Azimuth [°]	TVD [ft]	Vert Sect [ft]	North [ft]	East [ft]	Latitude	Longitude	DLS [°/100ft]	Comments
0.00†	0.000	212.420	0.00	0.00	0.00	0.00	40°07'47.305"N	104°45'39.521"W	0.00	
17.00	0.000	212.420	17.00	0.00	0.00	0.00	40°07'47.305"N	104°45'39.521"W	0.00	Tie-On
30.00	1.100	212.420	30.00	0.10	-0.11	-0.07	40°07'47.304"N	104°45'39.522"W	8.46	Begin GYRO Surveys
60.00	1.200	214.320	59.99	0.56	-0.61	-0.40	40°07'47.299"N	104°45'39.526"W	0.36	
90.00	1.200	215.020	89.99	1.04	-1.12	-0.76	40°07'47.294"N	104°45'39.531"W	0.05	
120.00	1.000	200.720	119.98	1.51	-1.63	-1.03	40°07'47.289"N	104°45'39.534"W	1.13	
150.00	0.900	191.220	149.98	1.97	-2.10	-1.17	40°07'47.284"N	104°45'39.536"W	0.62	
180.00	0.800	197.020	179.97	2.39	-2.53	-1.27	40°07'47.280"N	104°45'39.537"W	0.44	
210.00	0.900	188.720	209.97	2.81	-2.97	-1.37	40°07'47.276"N	104°45'39.539"W	0.53	
245.00	1.000	189.520	244.97	3.37	-3.54	-1.46	40°07'47.270"N	104°45'39.540"W	0.29	
335.00	0.700	195.220	334.96	4.64	-4.85	-1.74	40°07'47.257"N	104°45'39.543"W	0.35	
425.00	0.400	191.920	424.95	5.45	-5.68	-1.95	40°07'47.249"N	104°45'39.546"W	0.34	
515.00	0.100	209.320	514.95	5.82	-6.06	-2.05	40°07'47.245"N	104°45'39.547"W	0.34	
605.00	0.300	25.320	604.95	5.68	-5.91	-1.99	40°07'47.247"N	104°45'39.547"W	0.44	
695.00	0.600	51.320	694.95	5.22	-5.41	-1.52	40°07'47.252"N	104°45'39.541"W	0.40	
785.00	1.100	36.720	784.94	4.33	-4.42	-0.63	40°07'47.261"N	104°45'39.529"W	0.60	
875.00	1.700	35.420	874.91	2.69	-2.64	0.66	40°07'47.279"N	104°45'39.513"W	0.67	
965.00	2.400	37.520	964.85	0.32	-0.06	2.58	40°07'47.304"N	104°45'39.488"W	0.78	Tie-Into GYRO Surveys
1064.00	2.920	38.670	1063.74	-2.98	3.56	5.41	40°07'47.340"N	104°45'39.451"W	0.53	Begin BHI MWD Surveys
1156.00	3.200	31.040	1155.61	-6.70	7.59	8.20	40°07'47.380"N	104°45'39.415"W	0.54	
1248.00	3.900	49.450	1247.44	-10.53	11.82	11.90	40°07'47.422"N	104°45'39.368"W	1.44	
1339.00	5.030	51.960	1338.16	-14.42	16.29	17.40	40°07'47.466"N	104°45'39.297"W	1.26	
1430.00	6.260	51.780	1428.72	-19.19	21.82	24.44	40°07'47.521"N	104°45'39.206"W	1.35	
1521.00	6.320	52.280	1519.17	-24.49	27.95	32.30	40°07'47.581"N	104°45'39.105"W	0.09	
1613.00	6.240	50.550	1610.62	-29.92	34.23	40.16	40°07'47.643"N	104°45'39.004"W	0.22	
1704.00	7.380	54.430	1700.98	-35.55	40.77	48.74	40°07'47.708"N	104°45'38.894"W	1.35	
1797.00	7.940	54.780	1793.15	-41.65	47.95	58.84	40°07'47.779"N	104°45'38.763"W	0.60	
1889.00	8.300	55.140	1884.22	-47.98	55.41	69.48	40°07'47.853"N	104°45'38.626"W	0.40	
1975.00	8.620	53.380	1969.29	-54.27	62.80	79.75	40°07'47.926"N	104°45'38.494"W	0.48	
2060.00	7.260	51.290	2053.47	-60.44	69.96	89.05	40°07'47.996"N	104°45'38.375"W	1.64	
2145.00	6.980	50.760	2137.82	-66.19	76.59	97.24	40°07'48.062"N	104°45'38.269"W	0.34	
2230.00	6.510	50.490	2222.23	-71.69	82.92	104.96	40°07'48.124"N	104°45'38.170"W	0.55	
2315.00	5.960	47.670	2306.72	-76.98	88.96	111.94	40°07'48.184"N	104°45'38.080"W	0.74	
2400.00	6.760	47.970	2391.20	-82.55	95.28	118.92	40°07'48.247"N	104°45'37.990"W	0.94	
2486.00	7.020	51.970	2476.58	-88.33	101.90	126.82	40°07'48.312"N	104°45'37.888"W	0.63	
2571.00	6.530	53.050	2560.99	-93.59	108.01	134.77	40°07'48.372"N	104°45'37.786"W	0.60	
2656.00	5.730	52.380	2645.50	-98.31	113.50	142.00	40°07'48.427"N	104°45'37.693"W	0.94	
2741.00	6.120	56.560	2730.05	-102.64	118.59	149.14	40°07'48.477"N	104°45'37.601"W	0.68	
2827.00	6.900	52.120	2815.49	-107.50	124.29	157.04	40°07'48.533"N	104°45'37.499"W	1.08	
2912.00	6.260	50.610	2899.93	-112.76	130.37	164.65	40°07'48.593"N	104°45'37.401"W	0.78	
2997.00	5.480	47.150	2984.48	-117.75	136.07	171.21	40°07'48.650"N	104°45'37.317"W	1.01	
3082.00	6.250	51.130	3069.04	-122.71	141.73	177.79	40°07'48.706"N	104°45'37.232"W	1.02	
3167.00	6.980	54.270	3153.47	-127.80	147.65	185.58	40°07'48.764"N	104°45'37.132"W	0.96	
3252.00	6.770	53.320	3237.86	-132.93	153.66	193.79	40°07'48.823"N	104°45'37.026"W	0.28	
3338.00	6.290	52.900	3323.30	-137.97	159.53	201.62	40°07'48.881"N	104°45'36.925"W	0.56	



Actual Wellpath Report

GOBBLER 37N-E22HZ AWP

Page 3 of 7



REFERENCE WELLPATH IDENTIFICATION

Operator	KERR-MCGEE OIL & GAS ONSHORE LP	Slot	SLOT#28 GOBBLER 37N-E22HZ (400'FNL & 1980'FEL SEC 22)
Area	COLORADO	Well	GOBBLER 37N-E22HZ
Field	WELD COUNTY (KERR MCGEE)	Wellbore	GOBBLER 37N-E22HZ AWB
Facility	SEC.22-T2N-R66W		

WELLPATH DATA (159 stations)

MD [ft]	Inclination [°]	Azimuth [°]	TVD [ft]	Vert Sect [ft]	North [ft]	East [ft]	Latitude	Longitude	DLS [°/100ft]	Comments
3421.00	5.470	51.230	3405.87	-142.47	164.75	208.33	40°07'48.933"N	104°45'36.839"W	1.01	
3506.00	5.880	58.310	3490.45	-146.56	169.57	215.19	40°07'48.981"N	104°45'36.751"W	0.95	
3591.00	6.970	59.570	3574.92	-150.60	174.47	223.34	40°07'49.029"N	104°45'36.646"W	1.29	
3677.00	6.030	61.160	3660.36	-154.53	179.29	231.80	40°07'49.077"N	104°45'36.537"W	1.11	
3762.00	6.290	54.960	3744.87	-158.54	184.12	239.52	40°07'49.124"N	104°45'36.437"W	0.84	
3847.00	5.720	52.540	3829.41	-163.02	189.37	246.70	40°07'49.176"N	104°45'36.345"W	0.73	
3932.00	6.110	51.170	3913.95	-167.70	194.78	253.58	40°07'49.230"N	104°45'36.256"W	0.49	
4017.00	6.260	52.690	3998.46	-172.57	200.43	260.79	40°07'49.286"N	104°45'36.163"W	0.26	
4103.00	5.940	50.890	4083.97	-177.45	206.08	267.98	40°07'49.341"N	104°45'36.071"W	0.43	
4188.00	6.080	57.220	4168.50	-181.90	211.29	275.17	40°07'49.393"N	104°45'35.978"W	0.80	
4273.00	5.200	55.470	4253.09	-185.78	215.91	282.13	40°07'49.439"N	104°45'35.889"W	1.05	
4357.00	6.190	58.030	4336.68	-189.59	220.47	289.11	40°07'49.484"N	104°45'35.799"W	1.22	
4442.00	7.030	60.510	4421.11	-193.69	225.45	297.53	40°07'49.533"N	104°45'35.691"W	1.04	
4528.00	6.730	57.750	4506.49	-198.03	230.73	306.37	40°07'49.585"N	104°45'35.577"W	0.52	
4613.00	6.360	57.600	4590.94	-202.34	235.91	314.56	40°07'49.636"N	104°45'35.471"W	0.44	
4698.00	6.450	57.300	4675.41	-206.60	241.02	322.55	40°07'49.687"N	104°45'35.368"W	0.11	
4783.00	6.420	52.070	4759.87	-211.27	246.52	330.31	40°07'49.741"N	104°45'35.268"W	0.69	
4868.00	6.430	48.150	4844.34	-216.59	252.61	337.61	40°07'49.801"N	104°45'35.175"W	0.52	
4954.00	6.500	48.210	4929.79	-222.27	259.07	344.82	40°07'49.865"N	104°45'35.082"W	0.08	
5039.00	6.070	48.310	5014.28	-227.72	265.26	351.77	40°07'49.926"N	104°45'34.992"W	0.51	
5124.00	5.880	47.820	5098.82	-232.92	271.18	358.35	40°07'49.985"N	104°45'34.908"W	0.23	
5209.00	5.770	48.760	5183.38	-237.97	276.92	364.79	40°07'50.041"N	104°45'34.825"W	0.17	
5294.00	5.810	54.630	5267.95	-242.56	282.22	371.51	40°07'50.094"N	104°45'34.738"W	0.70	
5377.00	6.270	56.010	5350.49	-246.76	287.19	378.69	40°07'50.143"N	104°45'34.646"W	0.58	
5462.00	6.120	54.530	5434.99	-251.18	292.41	386.23	40°07'50.195"N	104°45'34.549"W	0.26	
5548.00	5.670	50.640	5520.54	-255.78	297.77	393.25	40°07'50.248"N	104°45'34.458"W	0.70	
5633.00	6.250	50.500	5605.08	-260.66	303.37	400.07	40°07'50.303"N	104°45'34.370"W	0.68	
5718.00	6.920	48.160	5689.51	-266.23	309.73	407.45	40°07'50.366"N	104°45'34.275"W	0.85	
5803.00	6.830	46.030	5773.90	-272.35	316.66	414.91	40°07'50.434"N	104°45'34.179"W	0.32	
5889.00	6.430	54.660	5859.33	-277.87	322.99	422.51	40°07'50.497"N	104°45'34.081"W	1.25	
5974.00	5.680	57.790	5943.86	-282.07	327.99	429.96	40°07'50.546"N	104°45'33.986"W	0.96	
6059.00	4.910	59.890	6028.49	-285.43	332.06	436.66	40°07'50.586"N	104°45'33.899"W	0.93	
6142.00	4.270	62.740	6111.23	-288.01	335.25	442.48	40°07'50.618"N	104°45'33.824"W	0.82	
6227.00	3.820	65.790	6196.01	-290.06	337.86	447.88	40°07'50.644"N	104°45'33.755"W	0.59	
6312.00	2.900	65.900	6280.87	-291.62	339.90	452.42	40°07'50.664"N	104°45'33.696"W	1.08	
6397.00	1.530	53.740	6365.80	-292.86	341.45	455.30	40°07'50.679"N	104°45'33.659"W	1.70	
6482.00	0.880	22.490	6450.78	-294.01	342.73	456.46	40°07'50.692"N	104°45'33.644"W	1.06	
6568.00	0.770	14.500	6536.77	-295.13	343.90	456.86	40°07'50.703"N	104°45'33.639"W	0.18	
6623.00	0.770	1.920	6591.77	-295.84	344.62	456.97	40°07'50.711"N	104°45'33.638"W	0.31	
6690.00	1.730	155.100	6658.76	-295.33	344.16	457.41	40°07'50.706"N	104°45'33.632"W	3.64	
6732.00	7.770	164.670	6700.60	-291.93	340.84	458.43	40°07'50.673"N	104°45'33.619"W	14.45	
6775.00	14.010	165.910	6742.80	-283.90	332.98	460.46	40°07'50.595"N	104°45'33.593"W	14.52	
6817.00	18.730	162.790	6783.09	-272.25	321.60	463.70	40°07'50.483"N	104°45'33.551"W	11.43	
6860.00	24.700	168.570	6823.03	-256.52	306.18	467.53	40°07'50.331"N	104°45'33.502"W	14.73	
6903.00	28.240	168.350	6861.51	-237.45	287.41	471.36	40°07'50.145"N	104°45'33.453"W	8.24	



Actual Wellpath Report

GOBBLER 37N-E22HZ AWP

Page 4 of 7



REFERENCE WELLPATH IDENTIFICATION			
Operator	KERR-MCGEE OIL & GAS ONSHORE LP	Slot	SLOT#28 GOBBLER 37N-E22HZ (400'FNL & 1980'FEL SEC 22)
Area	COLORADO	Well	GOBBLER 37N-E22HZ
Field	WELD COUNTY (KERR MCGEE)	Wellbore	GOBBLER 37N-E22HZ AWB
Facility	SEC.22-T2N-R66W		

WELLPATH DATA (159 stations) † = interpolated/extrapolated station										
MD [ft]	Inclination [°]	Azimuth [°]	TVD [ft]	Vert Sect [ft]	North [ft]	East [ft]	Latitude	Longitude	DLS [°/100ft]	Comments
6945.00	31.280	171.860	6897.97	-216.67	266.88	474.91	40°07'49.942"N	104°45'33.407"W	8.34	
6988.00	34.460	176.370	6934.09	-193.35	243.68	477.26	40°07'49.713"N	104°45'33.377"W	9.33	
7031.00	37.660	180.220	6968.85	-168.12	218.39	477.98	40°07'49.463"N	104°45'33.367"W	9.12	
7073.00	40.720	181.060	7001.40	-141.76	191.86	477.68	40°07'49.201"N	104°45'33.371"W	7.39	
7114.00	43.430	180.200	7031.83	-114.46	164.39	477.39	40°07'48.929"N	104°45'33.375"W	6.76	
7156.00	45.330	179.030	7061.84	-85.23	135.01	477.59	40°07'48.639"N	104°45'33.372"W	4.93	
7198.00	47.370	177.430	7090.83	-54.92	104.64	478.53	40°07'48.339"N	104°45'33.360"W	5.58	
7241.00	49.620	176.980	7119.33	-22.76	72.48	480.11	40°07'48.021"N	104°45'33.340"W	5.29	
7284.00	52.140	177.760	7146.46	10.54	39.16	481.63	40°07'47.692"N	104°45'33.320"W	6.03	
7326.00	54.690	178.880	7171.49	44.17	5.45	482.62	40°07'47.359"N	104°45'33.308"W	6.44	
7369.00	57.160	179.220	7195.58	79.65	-30.16	483.20	40°07'47.007"N	104°45'33.300"W	5.78	
7411.00	60.980	180.070	7217.16	115.50	-66.18	483.42	40°07'46.651"N	104°45'33.297"W	9.26	
7454.00	65.180	179.400	7236.63	153.65	-104.51	483.60	40°07'46.272"N	104°45'33.295"W	9.87	
7497.00	70.300	178.530	7252.91	193.29	-144.28	484.33	40°07'45.879"N	104°45'33.286"W	12.05	
7539.00	74.650	178.920	7265.55	233.20	-184.32	485.22	40°07'45.484"N	104°45'33.274"W	10.39	
7582.00	77.890	179.290	7275.76	274.80	-226.08	485.87	40°07'45.071"N	104°45'33.266"W	7.58	
7624.00	81.160	179.480	7283.39	315.92	-267.37	486.31	40°07'44.663"N	104°45'33.260"W	7.80	
7667.00	84.070	179.410	7288.92	358.38	-310.01	486.72	40°07'44.241"N	104°45'33.255"W	6.77	
7710.00	86.640	179.460	7292.40	401.05	-352.86	487.15	40°07'43.818"N	104°45'33.250"W	5.98	
7739.00†	88.714	179.942	7293.58	429.88	-381.83	487.30	40°07'43.532"N	104°45'33.248"W	7.34	7" Casing Point
7763.00	90.430	180.340	7293.76	453.75	-405.83	487.24	40°07'43.294"N	104°45'33.248"W	7.34	
7848.00	90.920	180.130	7292.76	538.26	-490.82	486.89	40°07'42.455"N	104°45'33.253"W	0.63	
7933.00	91.700	180.270	7290.81	622.75	-575.80	486.59	40°07'41.615"N	104°45'33.257"W	0.93	
8019.00	91.290	180.250	7288.57	708.23	-661.77	486.20	40°07'40.765"N	104°45'33.262"W	0.48	
8104.00	92.050	181.180	7286.09	792.62	-746.73	485.14	40°07'39.926"N	104°45'33.275"W	1.41	
8189.00	90.740	180.550	7284.02	877.00	-831.69	483.86	40°07'39.086"N	104°45'33.292"W	1.71	
8272.00	89.290	180.010	7284.00	959.52	-914.69	483.46	40°07'38.266"N	104°45'33.297"W	1.86	
8358.00	90.740	180.660	7283.98	1045.01	-1000.68	482.95	40°07'37.416"N	104°45'33.304"W	1.85	
8442.00	90.090	180.060	7283.37	1128.51	-1084.68	482.43	40°07'36.586"N	104°45'33.311"W	1.05	
8527.00	89.390	179.600	7283.75	1213.08	-1169.67	482.68	40°07'35.746"N	104°45'33.307"W	0.99	
8613.00	88.650	179.720	7285.23	1298.66	-1255.66	483.19	40°07'34.896"N	104°45'33.301"W	0.87	
8698.00	88.870	179.270	7287.07	1383.27	-1340.64	483.94	40°07'34.057"N	104°45'33.291"W	0.59	
8783.00	88.870	179.440	7288.74	1467.89	-1425.61	484.89	40°07'33.217"N	104°45'33.279"W	0.20	
8868.00	88.860	179.950	7290.43	1552.47	-1510.60	485.35	40°07'32.377"N	104°45'33.273"W	0.60	
8954.00	88.860	179.040	7292.14	1638.07	-1596.57	486.10	40°07'31.527"N	104°45'33.263"W	1.06	
9039.00	87.910	181.000	7294.53	1722.58	-1681.54	486.07	40°07'30.688"N	104°45'33.264"W	2.56	
9124.00	89.110	181.390	7296.74	1806.90	-1766.49	484.30	40°07'29.848"N	104°45'33.287"W	1.48	
9209.00	89.260	181.680	7297.95	1891.18	-1851.45	482.03	40°07'29.009"N	104°45'33.316"W	0.38	
9292.00	90.650	180.710	7298.02	1973.54	-1934.43	480.29	40°07'28.189"N	104°45'33.338"W	2.04	
9377.00	90.800	180.740	7296.94	2057.96	-2019.41	479.22	40°07'27.349"N	104°45'33.352"W	0.18	
9462.00	90.220	179.470	7296.18	2142.49	-2104.41	479.06	40°07'26.509"N	104°45'33.354"W	1.64	
9548.00	90.370	179.440	7295.74	2228.12	-2190.40	479.88	40°07'25.659"N	104°45'33.344"W	0.18	
9633.00	90.890	179.140	7294.81	2312.76	-2275.39	480.93	40°07'24.819"N	104°45'33.330"W	0.71	
9718.00	90.580	178.780	7293.72	2397.45	-2360.37	482.48	40°07'23.980"N	104°45'33.310"W	0.56	
9803.00	88.520	179.770	7294.38	2482.10	-2445.35	483.55	40°07'23.140"N	104°45'33.296"W	2.69	



Actual Wellpath Report

GOBBLER 37N-E22HZ AWP

Page 5 of 7



REFERENCE WELLPATH IDENTIFICATION			
Operator	KERR-MCGEE OIL & GAS ONSHORE LP	Slot	SLOT#28 GOBBLER 37N-E22HZ (400'FNL & 1980'FEL SEC 22)
Area	COLORADO	Well	GOBBLER 37N-E22HZ
Field	WELD COUNTY (KERR MCGEE)	Wellbore	GOBBLER 37N-E22HZ AWB
Facility	SEC.22-T2N-R66W		

WELLPATH DATA (159 stations)										
MD [ft]	Inclination [°]	Azimuth [°]	TVD [ft]	Vert Sect [ft]	North [ft]	East [ft]	Latitude	Longitude	DLS [°/100ft]	Comments
9888.00	89.380	181.410	7295.94	2566.53	-2530.33	482.68	40°07'22.300"N	104°45'33.308"W	2.18	
9972.00	89.970	181.110	7296.42	2649.88	-2614.31	480.83	40°07'21.470"N	104°45'33.331"W	0.79	
10057.00	90.280	180.830	7296.23	2734.27	-2699.30	479.39	40°07'20.630"N	104°45'33.350"W	0.49	
10142.00	90.520	180.950	7295.64	2818.67	-2784.28	478.07	40°07'19.790"N	104°45'33.367"W	0.32	
10227.00	91.050	180.750	7294.48	2903.07	-2869.27	476.81	40°07'18.951"N	104°45'33.383"W	0.67	
10313.00	89.140	179.930	7294.33	2988.56	-2955.26	476.30	40°07'18.101"N	104°45'33.390"W	2.42	
10398.00	88.860	180.970	7295.82	3073.02	-3040.24	475.63	40°07'17.261"N	104°45'33.398"W	1.27	
10483.00	89.140	180.930	7297.30	3157.40	-3125.22	474.22	40°07'16.421"N	104°45'33.417"W	0.33	
10568.00	89.510	181.630	7298.30	3241.73	-3210.19	472.33	40°07'15.582"N	104°45'33.441"W	0.93	
10654.00	90.000	180.660	7298.67	3327.08	-3296.17	470.61	40°07'14.732"N	104°45'33.463"W	1.26	
10739.00	90.060	180.650	7298.62	3411.53	-3381.17	469.63	40°07'13.892"N	104°45'33.476"W	0.07	
10824.00	90.030	180.470	7298.56	3495.99	-3466.16	468.80	40°07'13.052"N	104°45'33.486"W	0.21	
10909.00	90.090	181.370	7298.47	3580.38	-3551.15	467.44	40°07'12.212"N	104°45'33.504"W	1.06	
10994.00	90.280	180.720	7298.19	3664.76	-3636.14	465.89	40°07'11.372"N	104°45'33.524"W	0.80	
11080.00	90.520	180.580	7297.59	3750.20	-3722.13	464.91	40°07'10.522"N	104°45'33.537"W	0.32	
11165.00	89.080	181.620	7297.89	3834.56	-3807.11	463.28	40°07'09.683"N	104°45'33.558"W	2.09	
11250.00	88.950	181.790	7299.35	3918.80	-3892.06	460.75	40°07'08.843"N	104°45'33.590"W	0.25	
11335.00	89.300	182.610	7300.65	4002.94	-3976.98	457.49	40°07'08.004"N	104°45'33.632"W	1.05	
11420.00	89.690	182.390	7301.40	4087.03	-4061.90	453.78	40°07'07.165"N	104°45'33.680"W	0.53	
11506.00	89.510	181.180	7302.00	4172.25	-4147.85	451.10	40°07'06.315"N	104°45'33.714"W	1.42	
11591.00	87.290	180.040	7304.37	4256.66	-4232.81	450.20	40°07'05.476"N	104°45'33.726"W	2.94	
11676.00	87.090	179.220	7308.54	4341.17	-4317.70	450.75	40°07'04.637"N	104°45'33.719"W	0.99	
11681.00	87.050	179.680	7308.79	4346.14	-4322.70	450.80	40°07'04.588"N	104°45'33.718"W	9.22	Last BHI MWD Survey
11741.00	87.050	179.680	7311.88	4405.77	-4382.62	451.13	40°07'03.995"N	104°45'33.714"W	0.00	Projection to Bit

HOLE & CASING SECTIONS - Ref Wellbore: GOBBLER 37N-E22HZ AWB Ref Wellpath: GOBBLER 37N-E22HZ AWP									
String/Diameter	Start MD [ft]	End MD [ft]	Interval [ft]	Start TVD [ft]	End TVD [ft]	Start N/S [ft]	Start E/W [ft]	End N/S [ft]	End E/W [ft]
12.25in Open Hole	17.00	1008.00	991.00	17.00	1007.81	0.00	0.00	1.43	3.73
9.625in Casing Surface	17.00	1008.00	991.00	17.00	1007.81	0.00	0.00	1.43	3.73
8.75in Open Hole	1008.00	7752.00	6744.00	1007.81	7293.76	1.43	3.73	-394.83	487.29
7in Casing Intermediate	17.00	7739.00	7722.00	17.00	7293.58	0.00	0.00	-381.83	487.30
6.125in Open Hole	7739.00	11741.00	4002.00	7293.58	7311.88	-381.83	487.30	-4382.62	451.13



Actual Wellpath Report

GOBBLER 37N-E22HZ AWP

Page 6 of 7



REFERENCE WELLPATH IDENTIFICATION			
Operator	KERR-MCGEE OIL & GAS ONSHORE LP	Slot	SLOT#28 GOBBLER 37N-E22HZ (400'FNL & 1980'FEL SEC 22)
Area	COLORADO	Well	GOBBLER 37N-E22HZ
Field	WELD COUNTY (KERR MCGEE)	Wellbore	GOBBLER 37N-E22HZ AWB
Facility	SEC.22-T2N-R66W		

TARGETS									
Name	MD [ft]	TVD [ft]	North [ft]	East [ft]	Grid East [US ft]	Grid North [US ft]	Latitude	Longitude	Shape
GOBBLER SECTION 22		0.00	0.02	-119.95	3206523.24	1290992.56	40°07'47.305"N	104°45'41.065"W	polygon
GOBBLER 37N-E22HZ BHL ON PLAT (460'FSL & 1498'FEL SEC 22) REV-1		7315.00	-4407.96	455.34	3207135.21	1286589.72	40°07'03.745"N	104°45'33.660"W	point
GOBBLER HARDLINES (460' SETBACKS)		7400.00	0.02	-119.95	3206523.24	1290992.56	40°07'47.305"N	104°45'41.065"W	polygon

WELLPATH COMPOSITION - Ref Wellbore: GOBBLER 37N-E22HZ AWB					Ref Wellpath: GOBBLER 37N-E22HZ AWP				
Start MD [ft]	End MD [ft]	Positional Uncertainty Model			Log Name/Comment			Wellbore	
17.00	965.00	Generic gyro - continuous (Standard)			GYRODATA SURVEYS <30-965>			GOBBLER 37N-E22HZ AWB	
965.00	7710.00	NaviTrak (Standard)			BHI MWD SURVEYS 8 3/4" HOLE <1064-7710>			GOBBLER 37N-E22HZ AWB	
7710.00	11681.00	NaviTrak (Standard)			BHI MWD SURVEYS 6 1/8" HOLE <7763-11681>			GOBBLER 37N-E22HZ AWB	
11681.00	11741.00	Blind Drilling (std)			Projection to bit			GOBBLER 37N-E22HZ AWB	



Actual Wellpath Report

GOBBLER 37N-E22HZ AWP

Page 7 of 7



REFERENCE WELLPATH IDENTIFICATION			
Operator	KERR-MCGEE OIL & GAS ONSHORE LP	Slot	SLOT#28 GOBBLER 37N-E22HZ (400'FNL & 1980'FEL SEC 22)
Area	COLORADO	Well	GOBBLER 37N-E22HZ
Field	WELD COUNTY (KERR MCGEE)	Wellbore	GOBBLER 37N-E22HZ AWB
Facility	SEC.22-T2N-R66W		

WELLPATH COMMENTS				
MD [ft]	Inclination [°]	Azimuth [°]	TVD [ft]	Comment
17.00	0.000	212.420	17.00	Tie-On
30.00	1.100	212.420	30.00	Begin GYRO Surveys
965.00	2.400	37.520	964.85	Tie-Into GYRO Surveys
1064.00	2.920	38.670	1063.74	Begin BHI MWD Surveys
7739.00	88.714	179.942	7293.58	7" Casing Point
11681.00	87.050	179.680	7308.79	Last BHI MWD Survey
11741.00	87.050	179.680	7311.88	Projection to Bit